

# Fixed-dose combinations at the front line of multimodal pain management: perspective of the nurse-prescriber

Joanne O'Brien<sup>1</sup>  
Joseph V Pergolizzi Jr<sup>2</sup>  
Mart van de Laar<sup>3</sup>  
Hans-Ulrich Mellinghoff<sup>4</sup>  
Ignacio Morón Merchante<sup>5</sup>  
Srinivas Nalamachu<sup>6</sup>  
Serge Perrot<sup>7</sup>  
Robert B Raffa<sup>8</sup>

<sup>1</sup>Department of Pain Medicine, Beaumont Hospital, Beaumont, Dublin, Ireland; <sup>2</sup>Department of Medicine, Johns Hopkins University School of Medicine, Baltimore, MD; Association of Chronic Pain Patients, Houston, TX; Department of Pharmacology, Temple University School of Medicine, Philadelphia, PA, USA; <sup>3</sup>Arthritis Center Twente, Enschede, The Netherlands; <sup>4</sup>Department of Endocrinology, Diabetology and Osteology, Kantonsspital St Gallen, Switzerland; <sup>5</sup>Centro de Salud Universitario Goya, Madrid, Spain; <sup>6</sup>Kansas University Medical Center, Kansas City, and International Clinic Research, Leawood, KS, USA; <sup>7</sup>Service de Médecine Interne et Consultation de la Douleur, Hôpital Hotel Dieu, Paris Descartes University, Paris, France; <sup>8</sup>Department of Pharmaceutical Sciences, Temple University School of Pharmacy, Philadelphia PA, USA

Correspondence: Joanne O'Brien  
Pain Nurse Specialist, Department of Pain Medicine, Beaumont Hospital, Beaumont, Dublin 9, Ireland  
Tel +353 1 852 8380  
Fax +353 1 852 8380  
Email joanneobrien16@hotmail.com

**Abstract:** Pain should be treated promptly and effectively to restore the patient to full function, avoid pain chronification, and preserve quality of life. A recent pain specialists' meeting discussed the use of different pharmacological treatment options, such as topical analgesics, nonopioid agents (such as paracetamol and nonsteroidal anti-inflammatory drugs), weak and strong opioids, and fixed-dose combination products in the management of moderate to severe pain from different etiologies. One of the topics discussed in, and subsequent to, this meeting was the role of fixed-dose combination products for nurse-prescribers who are in many ways at the front line of managing both acute and chronic pain syndromes. The panel agreed that proper product selection should take into account the patient's age, condition, type of pain, and comorbidities, as well as balance safety with effectiveness. Although nurse-prescribers need to be aware of cumulative paracetamol dosing, fixed-dose combination products, such as tramadol-paracetamol, may offer important advantages, eg, by providing opioid-sparing without sacrificing efficacy.

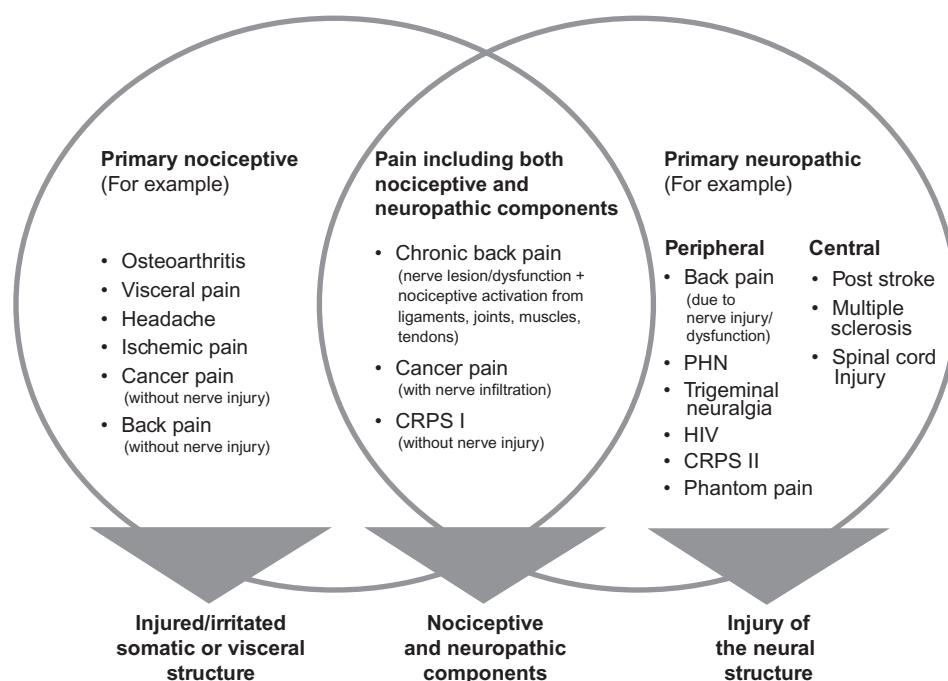
**Keywords:** tramadol, paracetamol, fixed-dose combination analgesics, pain management

## Background

Pain is a common health problem imposing a substantial burden on the afflicted individual and society.<sup>1</sup> In the US, more individuals suffer from chronic pain than from diabetes, heart disease, and cancer combined,<sup>2</sup> and one in five Europeans is afflicted by moderate-to-severe chronic pain lasting 6 months or more.<sup>3</sup> Pain prevalence in the elderly is high;<sup>4</sup> indeed, the aging population in the developed nations strongly suggests that chronic pain will become increasingly prevalent, problematic, and expensive.

Acute pain is the normal and expected adaptive response to noxious stimuli and diminishes as the body heals, whereas chronic pain is more complex and maladaptive, and involves altered pain perception. Acute pain may transition to chronic pain in a process known as chronification, which involves sensitization of the central nervous system. Chronic pain is often defined simplistically as pain that persists for more than 3 or 6 months, but this definition may be outmoded and cause us to view pain incorrectly, ie, to treat chronic pain as a form of prolonged pain, when it actually involves different mechanisms.<sup>5</sup> Chronic pain may be entirely nociceptive, neuropathic (ie, as a direct consequence of a lesion or disease affecting the somatosensory system),<sup>6</sup> or nociceptive with a neuropathic component (Figure 1). A well known example of this so-called mixed-pain is low back pain.<sup>7</sup>

Pain is one of the main reasons patients seek health care services.<sup>8</sup> Common pain syndromes in general health care are acute or chronic musculoskeletal pain, headache,



**Figure 1** Although chronic pain is often defined as pain that persists for 3 or 6 months, it is actually clinically and biologically distinct from acute pain. Some examples of the different pain types are given in the chart.

Copyright © 2012. John Wiley and Sons. Reprinted with permission from Pergolizzi J, Alegre C, Blake D, et al. Current considerations for the treatment of severe chronic pain: the potential for tapentadol. *Pain Pract.* 2012;12:290–306.<sup>129</sup>

**Abbreviations:** CRPS, complex regional pain syndrome; PHN, postherpetic neuralgia.

post surgical pain, and scar pain. As a result of an aging population, nurse-prescribers often have an elderly clientele, therefore “wear and tear” indications, such as low back pain and osteoarthritis, and the pain associated with these conditions, is frequently encountered. Table 1 lists the most common indications encountered by nurse-prescribers.

As shown in Figure 1, pain syndromes belong to different pain types and might thus require different treatment approaches. Pharmacological options include topical pain relievers, nonopioid agents (such as aspirin, paracetamol [acetaminophen], and nonsteroidal anti-inflammatory drugs [NSAIDs]), and opioids acting on the ascending or descending pain pathways (Figure 2). It should be noted that, depending on the country, not all nurse-prescribers have prescribing rights for strong opioids (eg, in Ireland, palliative care nurses are able to prescribe strong opioids, such as morphine or fentanyl, but pain management nurses are only able to prescribe morphine for pain due to trauma or myocardial infarction).

Fixed-dose analgesic combinations combine two or more analgesic agents in a single tablet. Ideally, the two agents have complementary mechanisms of action, and may interact with each other in an additive (agent + agent) or synergistic way (where the results are greater than the sum of the parts).<sup>9</sup> Possible advantages of fixed-dose combination products are dosing convenience, reduction of pill burden, the potential for greater patient adherence and, in the case of fixed-dose combination

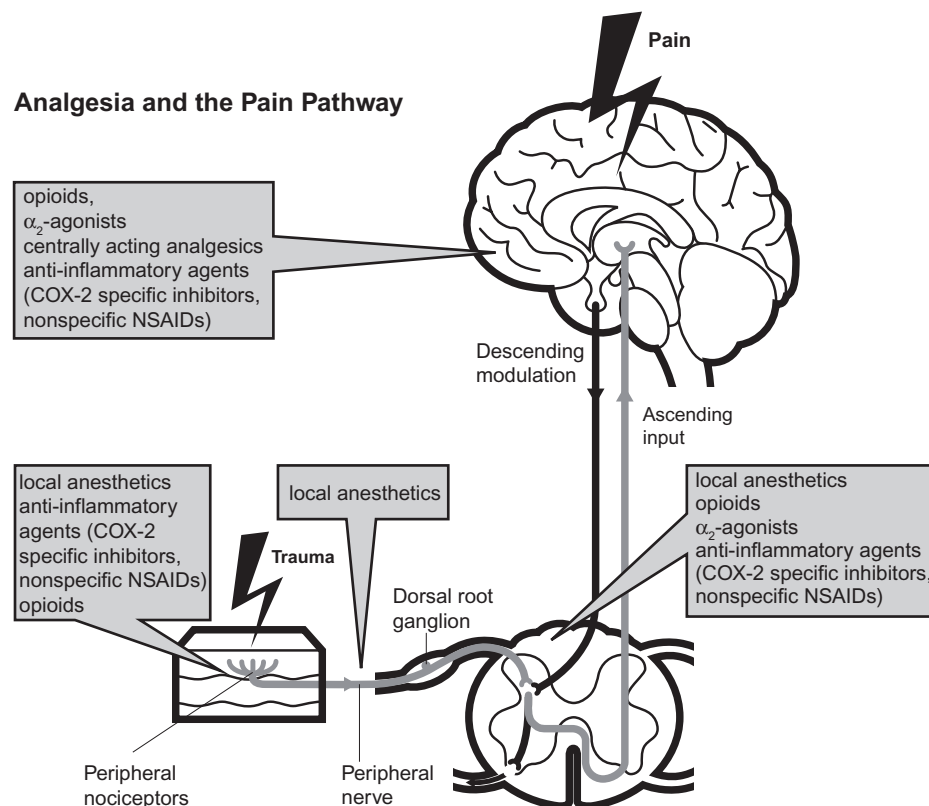
products involving an opioid and a nonopioid agent, opioid-sparing effects and fewer side effects due to the reduced doses of each single substance. The possible role of the fixed-dose tramadol-paracetamol combination for pain relief in patients seen by nurse-prescribers is discussed here.

## Meeting details

A consensus meeting attended by all authors of this publication was held on November 20, 2010 in Paris, France, to discuss the management of moderate to severe pain from different etiologies using different pharmacological treatment options, including the fixed-dose tramadol-paracetamol analgesic combination (Ixprim®, Zaldiar® or Ultracet®). Presentations by four of the authors were followed by a

**Table 1** Pain syndromes frequently encountered by nurse-prescribers

- Musculoskeletal pain
  - Back pain of unknown origin
  - Osteoarthritis
  - Rheumatoid arthritis
  - Disc herniation
- Headache/migraine
- Postsurgical pain/scar pain
- Wound pain
- Cancer pain
- Neuropathic pain
- Visceral pain



**Figure 2** Analgesia and the pain pathway.

Copyright © 2012. John Wiley and Sons. Reprinted with permission from Pergolizzi J, Alegre C, Blake D, et al. Current considerations for the treatment of severe chronic pain: the potential for tapentadol. *Pain Pract.* 2012;12:290–306.<sup>129</sup>

**Abbreviations:** COX, cyclooxygenase; NSAIDs, nonsteroidal anti-inflammatory drugs.

group discussion and review of pain management issues and available guidelines/recommendations based on the clinical experiences of the participants. Subsequent to the meeting, the panelists discussed specific clinical issues in pain, including the role of fixed-dose combination products for nurse-prescribers, who in many ways are at the front line of managing both acute and chronic pain syndromes. Their final consensus is summarized in this publication.

## Pain and quality of life

Chronic pain has a devastating effect on the lives of patients. Among chronic pain patients who suffered from pain  $\geq 5$  (on a 10-point numeric rating scale of 1 to 10 with 10 the worst pain imaginable) for 6 months or more, 21% had been diagnosed with pain-related depression, 61% were unable or less able to work outside the home, and about one-third were not receiving any pain treatment.<sup>3</sup> Pain-related depression has been correlated with decreased quality of life in chronic pain patients,<sup>10</sup> and the severity of chronic pain was shown to correlate significantly with reduced health-related quality of life in adults<sup>11</sup> and adolescents.<sup>12</sup> However, multiple regression analysis of data from a recent study of heterogeneous chronic pain patients found

pain catastrophizing to be a more important predictor of low quality of life than pain severity.<sup>13</sup> Among migraine sufferers, the frequency of migraine episodes also correlated inversely with poor health-related quality of life scores.<sup>14</sup> A review of 52 quality-of-life studies conducted among patients with six different types of neuropathic pain syndromes found that the presence and severity of neuropathic pain was associated with impaired quality of life.<sup>15</sup> Effective pain management can improve a pain patient's quality of life. In a study of 106 chronic non-malignant pain patients who agreed to participate in a medically supervised pain management program, quality of life significantly improved after one month of pain management over baseline scores.<sup>16</sup> Recent studies investigating patient perceptions of the 5% lidocaine medicated plaster<sup>17</sup> and the 7-day low-dose buprenorphine patch<sup>18</sup> also found marked improvement in quality of life after 12 weeks of pain treatment.

## Pain management in clinical practice

Pain is prevalent and widely under-treated.<sup>19,20</sup> The World Health Organization (WHO) has advocated strongly for more liberal use of analgesic medicines<sup>21,22</sup> and encourages national

programs for relief of the most extreme forms of pain.<sup>23</sup> Pain impairs a patient's quality of life,<sup>24</sup> which improves when pain is effectively managed.<sup>25</sup> Long-term pain is associated with cognitive impairment<sup>26,27</sup> and depression.<sup>3</sup> The effect of pain on patients is devastating, and the socioeconomic impact of chronic pain is overwhelming.<sup>24,28</sup> In a study of chronic low back pain, patients had a significantly greater comorbidity burden than control patients including higher rates of depression and sleep disorders.<sup>29</sup> These patients spent significantly more on drug therapy and had significantly higher total medical costs; annual medical costs were US\$ 8386 ± 17,507 compared with US\$ 3607 ± 10,845 for control patients.

Chronic pain negatively affects productivity, resulting in absenteeism from work, premature retirement, reduced ability to perform activities of everyday living, and presenteeism (a condition in which the pain patient reports to work but may not be able to fulfill his/her job duties completely).<sup>30</sup> A recent study quantifying the costs of headaches in Europe (including health care expenses plus lost productivity) estimated costs of approximately 112 billion Euro annually.<sup>31</sup> There are thus important personal, clinical, and social reasons to manage pain more effectively.

While acute and chronic pain syndromes must both be managed effectively, it is clear that chronic painful syndromes represent the greater individual and social burden. Acute pain does not always transition to chronic pain, but unmanaged, it can set the stage. Moreover, chronic pain can worsen when not managed promptly and effectively. Acute postsurgical pain may transition into long-term pain; a study of patients undergoing urologic surgery found that 51.2% reported pain 3 months after surgery.<sup>32</sup> To prevent chronification or worsening of chronic pain, pain should be rapidly and accurately diagnosed and managed effectively.<sup>33</sup> While most nurse-prescribers would agree with this statement, implementing it in daily practice can be challenging.

One important barrier to better pain management is the reticence of some patients to disclose pain. Some patients wait a considerable amount of time, even a year or more, before seeking medical care to help with pain.<sup>34</sup> A patient's attitude toward pain and pain perceptions may be influenced by his or her culture,<sup>35</sup> gender,<sup>36,37</sup> socioeconomic factors,<sup>38,39</sup> ethnic and religious attitudes,<sup>40</sup> age,<sup>41</sup> and the beliefs held by the patient or their family.<sup>42,43</sup> Not all patients in pain will seek treatment, and factors such as culture and ethnicity can influence if and how much a patient will discuss painful symptoms.<sup>44,45</sup> Thus, nurse-prescribers must be sensitive to patients who may be reticent to discuss their pain and encourage them to report all symptoms. In addition, further patient education is needed

to assure patients that there are safe and effective ways to control or at least manage painful symptoms and that pain is not something they must simply endure.

Once a patient reports pain, it is important to assess that pain and its impact on the patient in an accurate manner. The most commonly used pain assessment tools include questionnaires (for both pain intensity and quality of life), patient interviews, a visual analog scale, and a numerical scale that allow the patient to quantify pain. Such tools are inherently subjective, but they are easy to use, inexpensive, and widely accepted.<sup>46</sup> Using pictures (smiley faces) or observing behaviors associated with pain are often used for patients who cannot verbalize their pain, eg, the very young and those with cognitive impairment.<sup>47</sup> Not only should the intensity of the pain be assessed, but also the quality of the pain, which can be important in identifying neuropathic pain or pain with a neuropathic component.<sup>48</sup> For example, back pain with a neuropathic component has been shown to be associated with greater health care resource utilization and related costs than back pain without a neuropathic component.<sup>49</sup>

## Overview of pain management therapies

### Nonpharmacological options

Nonpharmacological options for pain management include massage, exercise, weight loss, diet, and relaxation techniques.<sup>50</sup> Cognitive and behavioral therapies, as well as psychotherapy, biofeedback, and hypnotherapy may sometimes be effective.<sup>51–53</sup> It is beyond the scope of this article to discuss nonpharmacological pain management in detail, but the authors agree that these can be very important as the foundation of a pain management plan. In some cases, a multidisciplinary approach to pain may be undertaken, involving a nurse, physician, physical therapist, occupational therapist, nutritionist, massage therapist, and other health care professionals. Complementary and alternative medical techniques, such as acupuncture, may be helpful for selected patients.<sup>54</sup> Growing evidence supports the use of some complementary and alternative medical approaches in pain management, and a recent study found that 70% of arthritis patients were using some sort of complementary and alternative medical technique, although most did not disclose this in their medical history.<sup>55</sup>

### Topical analgesics

Topical analgesics are available in gel, cream, or patch form, and are applied to the affected area. Many are available over-the-counter. Some examples are the 5% lidocaine

medicated plaster,<sup>56</sup> the NSAIDs patches, such as the diclofenac epolamine patch,<sup>57</sup> menthol,<sup>58</sup> and essential oxygen oil.<sup>59,60</sup> The advantages of topical products include localized delivery of medication, good evidence for efficacy, better tolerability due to less or no systemic action, and possible benefits in terms of patient adherence.<sup>61</sup> The capsaicin patch, containing an 8% concentration of capsaicin,<sup>62</sup> acts locally but not as an analgesic: a 30–60-minute application provides an improvement for several weeks/months by local nerve defunctionalization.

## Paracetamol and NSAIDs

Paracetamol (also called acetaminophen in some geographical areas) is an aniline analgesic, with a well established presence in the pain armamentarium. Despite its familiarity, the exact mechanism of action of paracetamol remains to be thoroughly described.<sup>63</sup> Paracetamol at supratherapeutic doses has been associated with hepatic toxicity<sup>64</sup> and is, in fact, a leading cause of serious liver injury.<sup>65,66</sup> Weak evidence also reports hypertension as a possible side effect of paracetamol use,<sup>67–69</sup> and a decrease in hemoglobin,<sup>70</sup> and gastrointestinal side effects have been reported.<sup>71</sup> Maximum daily doses of oral paracetamol should not exceed 4 g; however, in particular risk groups, such as patients with a history of alcohol abuse or existing liver disease, the use of paracetamol should be avoided.<sup>71,72</sup>

Although often discussed together with paracetamol, NSAIDs are a separate and diverse group of agents reducing prostaglandins and other chemical mediators which induce nociceptive activity and an inflammatory response. NSAIDs interrupt the biotransformation of prostaglandins and mediators in the arachidonic cascade by inhibiting cyclooxygenase (COX) isoenzymes.<sup>73</sup> Nonselective NSAIDs block both COX-1 and COX-2, whereas selective NSAIDs (coxibs) inhibit COX-2. NSAIDs have dose-dependent toxicity, which may result in gastrointestinal symptoms and cardiorenal symptoms.<sup>74,75</sup> Although NSAIDs can be effective pain relievers, a recent study associating NSAID use with increased risk of death from myocardial infarction<sup>76</sup> indicates that they should be used cautiously in patients at risk for cardiovascular disease. These safety issues prompted recommendations to limit the exposure to NSAIDs to the “shortest possible duration at the lowest effective dose.”<sup>77</sup> In the elderly, nonselective NSAIDs and selective COX-2 inhibitors should be used “rarely and with extreme caution in highly selected individuals,” and elderly patients “with moderate to severe pain, pain-related functional impairment, or diminished quality of life due to pain, should be considered for opioid therapy.”<sup>78</sup>

## Opioids

According to the WHO cancer pain ladder, opioids are grouped into step 2 (weak) and step 3 (strong) medications. Frequently prescribed weak opioids include codeine, dihydrocodeine, and tramadol, and frequently prescribed strong opioids are buprenorphine, fentanyl, hydromorphone, methadone, morphine, and oxycodone. Although being effective analgesics, opioid agents in general have been associated with certain dose-dependent adverse events, including nausea, vomiting, constipation, and somnolence. These side effects may occur in the majority of patients and can be treatment-limiting.<sup>79–81</sup> In addition, opioids may be associated with tolerance, dependence, and addiction, and may lead to mood changes, hormonal changes, and an increased risk of fractures.<sup>81,82</sup> Fractures likely result from an increased risk of falls and an effect of opioids on bone metabolism.<sup>81</sup> Opioid-induced hyperalgesia has also been reported, a condition in which prolonged use of opioids lowers the pain threshold, paradoxically increasing the patient's pain, but this is not well understood.<sup>83,84</sup> However, opioids differ in their risk profile; for instance, compared with hydrocodone, tramadol is associated with a reduced risk of fracture,<sup>81</sup> addiction, and dependence.<sup>85</sup> In isolated cases, there have been reports of serotonin syndrome in a temporal connection with the therapeutic use of tramadol in combination with other serotonergic medicinal products, such as selective serotonin reuptake inhibitors, or with monoamine oxidase inhibitors.<sup>86</sup> Signs of serotonin syndrome include confusion, agitation, fever, sweating, ataxia, hyperreflexia, myoclonus, and diarrhoea. Withdrawal of the serotonergic medicinal product usually brings about a rapid improvement. Treatment depends on the nature and severity of symptoms.<sup>86</sup>

## Combination products

There is a need for treatment options which provide the analgesic efficacy of opioids but are better tolerated. Approaches are either to develop drugs with more than one mechanism of action, eg, tapentadol, which combines two analgesic principles, ie,  $\mu$ -opioid receptor agonism and noradrenalin reuptake inhibition, in one molecule, or to develop fixed combinations of analgesics with different mechanisms of action.

In selecting an analgesic agent, the WHO ladder may be helpful, but it is validated only in cancer pain. The WHO ladder recommends starting with nonopioid pain relievers, then progressing to weak and finally to strong opioids, based on pain intensity. The WHO paradigm conceives of analgesia as monotherapy. Combining two analgesic agents may provide an additive or synergistic effect of the two components.



This can positively affect the analgesic efficacy of the drug; however, in some cases, it may amplify the side effect profile.<sup>87,88</sup> A combination analgesic regimen may be considered especially effective when the individual agents have different analgesic mechanisms and act synergistically.<sup>9</sup> There are a number of analgesics available combining two agents in one fixed-dose product. These fixed-dose combinations are convenient, reduce the pill burden, and may require lower dosages of the individual compounds. However, they are inflexible and may not provide ideal doses for particular patients. Many combination products use paracetamol. In order to avoid potential paracetamol overdose, patients must be aware of their daily cumulative paracetamol intake. Because paracetamol is found in over-the-counter combination products, as well as prescription combinations, and is available over-the-counter as a monotherapeutic agent, patients may exceed recommended cumulative doses (4 g/day or less<sup>72</sup>) whilst unaware of doing so, or may even be unaware of recommended doses.<sup>89</sup> Nurse prescribers may play an important role in avoiding potentially fatal hepatotoxicity by informing and counseling patients on this point. Patients should be encouraged to inform their nurse prescribers about all additional over-the-counter medications, including paracetamol-containing cold remedies, which are frequently perceived as being harmless.

Examples of fixed-dose combinations containing an opioid include codeine-paracetamol, tramadol-paracetamol, and oxycodone-paracetamol. Synergistic analgesic benefits have been demonstrated for the fixed dose combination tramadol-paracetamol.<sup>90,91</sup> Management with a fixed-dose opioid-nonopioid combination might require less opioid to achieve effective analgesia compared with opioid monotherapy. Opioid-sparing effects may reduce opioid-related side effects and limit the amount of narcotic drug required. Opioid-sparing was demonstrated in two studies comparing tramadol-paracetamol with tramadol monotherapy in the management of subacute low back pain<sup>92</sup> and pain following ambulatory hand surgery with intravenous regional anesthesia.<sup>93</sup> Treatment with the fixed-dose combination reduced tramadol consumption by 24% in both studies, and resulted in significantly fewer side effects than with tramadol monotherapy.

Fixed-dose combination products have shown good efficacy and tolerability in the treatment of a number of acute and chronic pain syndromes. Table 2 summarizes the study results for pain syndromes relevant to the nurse-prescriber. The efficacy of fixed-dose tramadol-paracetamol for example was observed in a large noninterventional study in elderly patients ( $\geq 65$  years) attending general practices in France.<sup>94</sup> More than half of the patients (65%) experienced significant pain

relief of their (mainly musculoskeletal) pain, the incidence of adverse events was low (4.5%), and most patients (91%) were satisfied with their treatment. In the elderly population, in whom conventional analgesics such as NSAIDs should be used with caution,<sup>78</sup> a fixed-dose combination such as tramadol-paracetamol might be a useful treatment option for the nurse-prescriber.

## Therapeutic guidelines

There is a wealth of literature about pain management, including guidelines addressing specific pain syndromes,<sup>72,78,111–124</sup> but nurse-prescribers must put these guidelines into the context of a clinical practice at the front line of pain. Guidelines often address the large issues in pain, but may fail to consider matters crucial to nurse-prescribers, such as under-reporting of pain, mixed pain, and chronification. The authors note that, overall, guidelines tend to favor safety over pain relief. For example, the American Heart Association Scientific Statement recommends that patients with elevated cardiovascular risk factors suffering from musculoskeletal pain should avoid using certain pharmacological agents, even if it means that pain is undertreated.<sup>112</sup> Because patient safety must always be paramount, analgesic options should be found which can safely yet effectively address pain. Not treating pain is not an option.

## Prescribing considerations for patients in pain

Pain management must take into account the age, comorbidities, functional state, mental health, occupation, family status, and other aspects of the patient's life, as well as the type and anticipated duration of pain. Particular care is advised in treating pediatric and geriatric patients. A full medical history is required. In particular, the nurse-prescriber must be aware of all drugs the patient is taking, including herbal supplements and over-the-counter products. This may require specific inquiry. The more drugs a patient takes, the greater the likelihood of potentially dangerous drug-drug interactions.<sup>125</sup> Paracetamol is safe and effective at recommended doses, but is associated with toxicity at high doses.<sup>126</sup> Paracetamol poisoning can occur accidentally, in that patients may be unaware that paracetamol is contained in many prescription and over-the-counter products. Thus, while fixed-dose combination analgesic products using paracetamol may be effective, opioid-sparing, and safe, it is important to be aware of the patient's cumulative paracetamol dose. Nurse-prescribers can educate patients about the benefits and risks of paracetamol and help patients to understand cumulative paracetamol dosing.

**Table 2** Acute and chronic pain syndromes managed with fixed-dose combination analgesics (selected studies are listed)

| Study                         | Patients   | Agents  | Efficacy  | Side effects  |
|-------------------------------|--|---|---|---|
| <b>Musculoskeletal pain</b>   |  |   |   |   |
| Hewitt et al <sup>95</sup>    | Randomized, placebo-controlled   | 603<br>Acute pain associated with ankle sprain  | <b>Tramadol-paracetamol</b><br>37.5 mg/325 mg or 75 mg/650 mg<br><b>Hydrocodone-paracetamol</b><br>7.5 mg/650 mg<br>Placebo<br>daily for 5 days   | Both combination products provided significantly greater pain relief than placebo with no significant difference between the agents.  |
| Mejiad et al <sup>94</sup>    | Observational, prospective, open-label, in clinical practice                               | 2663<br>≥65 years, primarily with musculoskeletal pain                                    | <b>Tramadol-paracetamol</b><br>37.5 mg/325 mg<br>Mean daily dose 143 mg/1235 mg<br>median treatment 30 days   | Marked reduction from baseline in mean pain intensity score at final assessment. 91% of patients were satisfied or completely satisfied.  |
| <b>Rheumatoid arthritis</b>   |  |   |   |   |
| Lee et al <sup>96</sup>       | Double-blind, randomized, placebo-controlled   | 277<br>Add-on for patients with inadequate pain control by conventional NSAIDs and DMARDs | <b>Tramadol-paracetamol</b><br>37.5 mg/325 mg tid<br>Placebo  | Significant improvement in pain relief, significant reduction in pain intensity, no difference in physical function.  |
| Raffaelli et al <sup>97</sup> | Open-label case series   | 29<br>Chronic moderate to severe pain, not taking biological drugs                        | <b>Oxycodone-paracetamol</b><br>5 mg/325 mg<br>Mean daily dose at end of study 14 mg/720 mg   | 42% had good clinical response (EULAR) and 50% showed 20% improvement.  |
| <b>Osteoarthritis</b>         |  |   |   |   |
| Choi et al <sup>98</sup>      | Safety study, randomization to titration and nontitration group                            | 250<br>Knee OA<br>on stable NSAID therapy   | <b>Tramadol-paracetamol</b><br>37.5 mg/325 mg tid<br>Titration over 7 days for titration group  | Discontinuation rate was significantly lower in titration group with nausea, vomiting and dizziness the most common AEs (all significantly more frequent in the nontitration group). No SAEs reported. AEs did not differ significantly among groups. |
| Corsinovi et al <sup>99</sup> | Randomized, single-blind, 6-week study   | 154 female<br>Geriatric nursing home residents with moderate to severe OA pain            | <b>Oxycodone-paracetamol</b><br>(average dose 16 mg/900 mg)<br><b>Codeine-paracetamol</b><br>(average dose 115 mg/1916 mg)<br>Conventional nonopioid therapy<br><b>Etodolac-paracetamol</b><br>300 mg/500 mg bid<br>Etodolac 300 mg bid | Fixed-dose combinations significantly reduced mean pain at 6 weeks versus conventional therapy.   |
| Pareek et al <sup>100</sup>   | Double-blind, randomized, comparative, multicenter 10-day study                            | 220<br>Knee OA flare  | <b>Etodolac-paracetamol</b><br>300 mg/500 mg bid<br>Etodolac 300 mg bid   | Fixed-dose combination significantly reduced pain intensity and improved function. Results noticeable within 30 minutes of first dose.  |
| Doherty et al <sup>70</sup>   | Double-blind, four-arm, parallel-group short-term (10 days) and long-term (13 weeks) study | 892<br>Chronic knee pain (85% had OA)   | <b>Ibuprofen-paracetamol</b><br>200 mg/500 mg<br><b>Ibuprofen-paracetamol</b><br>400 mg/1000 mg<br>Ibuprofen 400 mg<br>Paracetamol 1000 mg  | At day 10, ibuprofen/paracetamol 400 mg/1000 mg showed significantly more pain relief than paracetamol. At 13 weeks, significantly more patients found combination therapy excellent or good compared with paracetamol monotherapy.                   |
|                               |  |   |   | Decreases in hemoglobin ( $\geq 1$ g/dL) occurred in all groups but was twice as frequent in patients taking ibuprofen/paracetamol 400 mg/1000 mg compared with monotherapy.  |

(Continued)

Table 2 (Continued)

| Study  | Patients   | Agents  | Efficacy  | Side effects  |
|--|--|---|---|---|
| Conaghan et al <sup>101</sup><br>Open-label, randomized,<br>parallel-group 7-day study   | 220<br>Hip and/or knee pain, $\geq 60$ years<br>of age   | 7-day buprenorphine patches<br>(range 5–25 $\mu\text{g}/\text{hour}$ ) + paracetamol<br>1000 mg qid<br><b>Codeine-paracetamol</b><br>(either two 8 mg/500 mg or two<br>30 mg/500 mg daily)  | Noninferiority of patch + paracetamol<br>to codeine-paracetamol combination<br>regarding analgesic efficacy.  | Comparable incidence of AEs.<br>High withdrawal rates in both groups.   |
| <b>Low back pain</b><br>Palangio et al <sup>102</sup><br>Double-blind, randomized,<br>parallel-group   | 147<br>Acute pain  | <b>Hydrocodone-ibuprofen</b><br>7.5 mg/200 mg<br><b>Oxycodone-paracetamol</b><br>5 mg/325 mg<br>Mean daily dose:<br>hydrocodone-ibuprofen 13.5 mg/360 mg<br>oxycodone-paracetamol 11 mg/715 mg  | No significant differences between<br>the groups.   | No significant differences between the<br>groups.   |
| Ruoff et al <sup>103</sup><br>Double-blind, randomized   | 318<br>Chronic pain  | <b>Tramadol-paracetamol</b><br>37.5 mg/325 mg<br>Placebo<br>Mean daily dose 158 mg/1365 mg<br><b>Tramadol-paracetamol</b><br>37.5 mg/325 mg<br>Tramadol 50 mg<br>Mean daily dose:<br>Tramadol-paracetamol<br>172 mg/1495 mg<br>Tramadol 227 mg  | Significantly improved outcome in all<br>efficacy measures compared with placebo.   | Discontinuation due to AEs was 19%<br>for combination and 6% for placebo.   |
| Perrot et al <sup>102</sup><br>Double-blind, randomized,<br>parallel-group   | 119<br>Subacute pain   | <b>Tramadol-paracetamol</b><br>172 mg/1495 mg<br>Tramadol 227 mg  | Comparable analgesic efficacy.  | Significantly fewer AEs with the<br>combination drug.<br>Tramadol consumption reduced by 24%<br>with combination tablet.  |
| <b>Headache</b><br>Silberstein et al <sup>104</sup><br>Two replicate double-<br>blind, randomized,<br>placebo-controlled studies<br>Pfaffenrath et al <sup>105</sup><br>Open-label prephase<br>Randomized, double-blind<br>phase | 576 and 535<br>Acute migraine<br><br>1734<br>16–72 years of age,<br>migraine, episodic tension<br>headache or headache of<br>unknown etiology, associated with<br>moderate to very severe pain | <b>Sumatriptan-naproxen</b><br>85 mg/500 mg<br>Placebo<br><br>Prephase: OTC treatment of choice<br>Randomization:<br><b>Acetylsalicylic acid-paracetamol-<br/>caffeine</b><br>500 mg/400 mg/100 mg<br><b>Acetylsalicylic acid-paracetamol</b><br>500 mg/400 mg<br>Acetylsalicylic acid 1000 mg<br>Paracetamol 1000 mg<br>Caffeine 100 mg<br>Placebo | At 2 hours, 52% and 51% of combination<br>product patients were pain free versus<br>17% and 15% of placebo patients<br>( $P < 0.001$ ).<br>Overall greater pain reduction occurred<br>in the triple combination group at 2 hours. | Most common AEs were nausea ( $\leq 4\%$ )<br>and dizziness ( $\leq 2\%$ ).<br><br>No safety data reported.<br>Branded tablets (from a well-known<br>over the counter brand) were<br>significantly more effective in relieving<br>pain than unbranded (but identical)<br>tablets. |



|   |  |  |   |   |
|---|--|--|---|---|
| Diener et al <sup>106</sup><br>Post hoc subgroup analysis   | 610<br>Treated for 3 independent episodes of severe headache (episodic tension headache or migraine) | <b>Acetylsalicylic acid-paracetamol-caffeine</b><br>500 mg/400 mg/100 mg<br>Placebo  | Combination therapy was significantly more effective in providing pain relief than placebo ( $P = 0.0008$ ) and median time to 50% pain relief was 1 hour and 24 minutes in active and 2 hours and 19 minutes in placebo arms.  | Not reported  |
| <b>Fibromyalgia</b><br>Bennett et al <sup>107</sup><br>Double-blind, randomized, placebo-controlled | 315  | <b>Tramadol-paracetamol</b><br>37.5 mg/325 mg<br>Placebo<br>Mean daily dose 150 mg/1300 mg   | Significantly better pain relief and health-related quality of life with combination therapy.   | Discontinuation due to AEs was 19% for combination and 12% for placebo.   |
| <b>Painful diabetic neuropathy</b><br>Ko et al <sup>108</sup><br>Open-label, randomized             | 163<br>Type 2 diabetes<br>25–75 years  | <b>Tramadol-paracetamol</b><br>37.5 mg/325 mg<br>Gabapentin 300 mg<br>Mean dose at final visit:<br>Tramadol-paracetamol<br>158 mg/1371 mg<br>Gabapentin 1575 mg  | Comparable mean reductions in pain intensity and mean pain relief scores.<br>Comparable improvements in quality of life.  | Similar rates of AEs and discontinuation due to AEs for both groups.  |
| <b>Postoperative pain</b><br>White et al <sup>109</sup><br>Double-blind, randomized, parallel-group | 252<br>Ambulatory arthroscopic or laparoscopic tubal ligation  | <b>Hydrocodone-paracetamol</b><br>7.5 mg/750 mg<br>Ketorolac 10 mg<br>Placebo<br>Every 6 hours for up to 3 days<br><b>Ibuprofen-paracetamol</b><br>Acetaminophen 1000 mg<br>400 mg/1000 mg<br><b>Codeine-paracetamol</b><br>30 mg/325 mg<br>Immediately after surgery and every 4 hours for up to four doses<br><b>Tramadol-paracetamol</b><br>37.5 mg/325 mg<br>Tramadol 50 mg<br>Before and immediately after surgery and every 6 hours thereafter | No difference in pain relief between the active agents after arthroscopic procedures, both superior to placebo.<br>No difference in pain relief between all 3 groups for laparoscopic procedures<br>Ibuprofen-paracetamol superior to other 2 treatments in pain control. | AE incidences similar for both active agents, except higher incidence of postoperative dizziness for hydrocodone-paracetamol.<br>Higher rate of AEs on codeine-paracetamol compared with ibuprofen-paracetamol and paracetamol alone. |
| Sniezek et al <sup>110</sup><br>Double-blind, randomized  | 210<br>Mohs micrographic surgery and reconstruction for head and neck skin cancer                    |  |   |   |
| Rawal et al <sup>93</sup><br>Randomized, double-blind, double-dummy, parallel-group                 | 261<br>Ambulatory hand surgery with intravenous regional anesthesia                                  |  | Comparable analgesic efficacy.<br>Tramadol-paracetamol reduced tramadol consumption by 24%.   | Fewer AEs with tramadol-paracetamol compared with tramadol monotherapy.   |

**Abbreviations:** AE, adverse event; bid, twice daily; DMARD, disease-modifying antirheumatic drug; EULAR, European League Against Rheumatism; NSAID, nonsteroidal anti-inflammatory drug; OA, osteoarthritis; OTC, over the counter; qid, four times daily; SAE, serious adverse event; tid, three times daily.

## Multimodal pain therapy

Nurse-prescribers are increasingly recognizing the value of multimodal pain treatments for managing acute and chronic pain syndromes. A multimodal approach simply refers to the use of more than one treatment strategy to address pain. Conservative treatments may include rest, hot or cold therapy, exercise, diet changes, weight loss, smoking cessation, massage, physical therapy, occupational therapy, and others. There is growing evidence in the literature on complementary and alternative medicine techniques, which may offer relief with minimal risk to patients open to this type of treatment. Common complementary and alternative medicine therapy for pain includes acupuncture, aromatherapy, music therapy, and herbal supplements.<sup>54</sup> Pharmacological pain treatment can then be added to this conservative base as needed, starting with nonopioid agents and progressing to fixed-dose combination products and, if necessary, to opioid therapy.

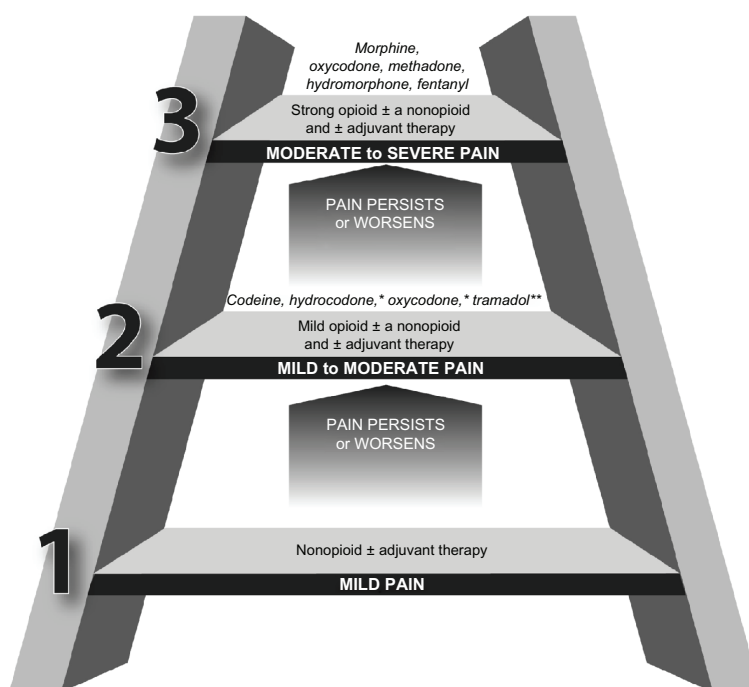
Patient education is an often neglected component in devising a comprehensive pain management plan for pain patients, and especially for those dealing with long-term or chronic pain. Patients should be encouraged to discuss their symptoms and questions about therapy with a qualified clinician or nurse. Patients on pharmacological therapy should be thoroughly informed about the drug(s) they are taking, dosing limits, potential side effects, and drug interactions.

An important component of multimodal pain therapy is the concept that there is no “magic pill”. Some patients have the unrealistic expectation that they can simply take one tablet to relieve 100% of their pain. Patients should be encouraged to think of their pain and pain treatments in percentages. For example, regular massage may relieve about 20% of a patient’s pain. Instead of dismissing this as insufficient, the patient should build on it. An exercise program may relieve another 30% of the patient’s pain. Together, massage and exercise might therefore decrease the patient’s pain by 50%. If an analgesic product is then 50% effective, a multimodal therapeutic approach involving massage, exercise, and drug therapy could reduce 100% of the patient’s pain. While this is an imperfect analogy, it may be a useful illustration to help patients understand better the fundamental concept underlying multimodal therapy.

## Positioning of fixed-dose combinations on the WHO cancer pain ladder

Paradigms of pain management are often based on the older concept that all pain is nociceptive. The WHO cancer pain ladder<sup>127</sup> describes pain and treatments based on pain intensity rather than the nature of the pain (Figure 3).

Over the years, several modifications have been proposed, including adaptations to accommodate other pain types.<sup>128</sup>



**Figure 3** The World Health Organization pain ladder bases therapeutic choices on pain intensity and makes no provision of neuropathic or mixed pain syndromes.

**Notes:** \*In fixed-dose combination products, such as oxycodone and paracetamol or hydrocodone and paracetamol; \*\*considered a step 2 opioid but is also available in fixed-dose combination product of tramadol and paracetamol.

Adapted from World Health Organization pain ladder.<sup>127</sup>

Although created in 1986, the WHO pain ladder is still used to help clinicians understand the “ramp” of progressively stronger analgesics, but it is intended for cancer pain and does not apply well to some conditions like arthritis pain, where NSAIDs are more effective than opioids. Combination products, such as tramadol-paracetamol, were not available in 1986 and it is debatable as to where this and other fixed-dose combination products would fit onto the original WHO ladder. Fixed-dose combination products are basically an unmarked rung on the ladder, because different experts might classify them as step 1 or step 2 analgesics, or between steps 1 and 2, if for instance a step 1 analgesic like paracetamol is combined with a step 2 opioid like tramadol.

## Conclusion

Pain is a serious, prevalent, and frequently undertreated condition that can often be effectively and safely managed or even alleviated. Because pain is frequently multimechanistic, multimodal pain therapies including administration of a combination drug may be effective with good tolerability. The pharmacological armamentarium for pain is large and includes topical analgesics, nonopioid agents (such as paracetamol and NSAIDs), weak and strong opioids, and fixed-dose combination products. Proper product selection should take into account the patient's age, condition, type of pain, comorbidities, and balance safety with effectiveness. Fixed-dose combination products, such as tramadol-paracetamol, offer important advantages that a nurse-prescriber should consider, in that they may be opioid-sparing without sacrificing efficacy. Pain should be treated promptly and effectively to restore the patient to full function, avoid pain chronification, and preserve quality of life.

## Disclosure

JOB has received consultancy honoraria from Grünenthal GmbH and speaker honoraria from Pfizer Ireland. JVP has received consultancy honoraria from Grünenthal GmbH, Baxter, Endo Pharmaceuticals, and Hospira. MvdL has received consultancy honoraria from Merck The Netherlands, Pfizer Europa, and Grünenthal GmbH, and speaker honoraria from Pfizer Europa. HUM has received consultancy honoraria from Grünenthal GmbH. IMM received consultancy honoraria from Boehringer Ingelheim, Grünenthal GmbH, Merck Sharp and Dohme Corporation, and Takeda Pharmaceuticals Europe, and has received lecture fees from Almirall, Astra-Zeneca, Boehringer Ingelheim, Bristol Myers Squibb, Esteve, Grünenthal GmbH, Eli Lilly and Company, Merck Sharp and Dohme Corporation, Novartis,

and Sanofi-Aventis. SN has received consultancy honoraria or research grants from the following companies in the past five years: Grünenthal GmbH, Johnson and Johnson, Endo Pharmaceuticals, Cephalon, Alphapharma, King Pharmaceuticals, Allergan, ProStakan, and Covidien. SP has received consultancy honoraria from Grünenthal GmbH. RBR is a speaker, consultant, and/or basic science investigator for several pharmaceutical companies involved in analgesic research, but receives no royalty (cash or otherwise) from the sale of any product; he received consultancy honoraria from Grünenthal GmbH. The meeting referred to herein was supported by Grünenthal GmbH, Aachen, Germany. The authors acknowledge editorial assistance from Jo Ann LeQuang (LeQ Medical, Angleton, TX), Elke Grosseleindemann (Brett Medical Writing, Bibra Lake, Australia) and Birgit Brett (Brett Medical Writing, Pulheim, Germany). All costs associated with the publication of the manuscript were met by Grünenthal GmbH, Aachen, Germany.

## References

1. Langley P. The prevalence, correlates and treatment of pain in the European Union. *Curr Med Res Opin*. 2011;27:463–480.
2. American Academy of Pain Medicine. AAPM Facts and Figures on Pain. 2011. Available from: <http://www.painmed.org/patient/facts.html>. Accessed July 5, 2011.
3. Breivik H, Collett B, Ventafridda V, Cohen R, Gallacher D. Survey of chronic pain in Europe: prevalence, impact on daily life, and treatment. *Eur J Pain*. 2006;10:287–333.
4. Brown S, Kirkpatrick M, Swansson M, McKenzie I. Pain experience in the elderly. *Pain Manage Nurs*. 2011;12:190–196.
5. Pergolizzi J, Ahlbeck K, Aldington D, et al. The chronic pain conundrum: should we CHANGE from relying on past history to assessing prognostic factors? *Curr Med Res Opin*. 2012;28:249–256.
6. Treede RD, Jensen T, Campbell J, et al. Neuropathic pain: redefinition and a grading system for clinical and research purposes. *Neurology*. 2008;70:1630–1635.
7. Freynhagen R, Baron R. The evaluation of neuropathic components in low back pain. *Curr Pain Headache Rep*. 2009;13:185–190.
8. Friessem C, Willweber-Strumpf A, Zenz M. Chronic pain in primary care. German figures from 1991 and 2006. *BMC Public Health*. 2009;9:299.
9. Raffa R. Pharmacology of oral combination analgesics: rational therapy for pain. *J Clin Pharm Ther*. 2001;26:257–264.
10. Elliott T, Renier C, Palcher J. Chronic pain, depression, and quality of life: correlations and predictive value of the SF-36. *Pain Med*. 2003;4:331–339.
11. Becker N, Thomsen A, Olsen A, Sjogren P, Bech P, Eriksen J. Pain epidemiology and health related quality of life in chronic non-malignant pain patients referred to a Danish multidisciplinary pain center. *Pain*. 1997;73:393–400.
12. Hunfeld J, Perquin C, Duivenvoorden H, et al. Chronic pain and its impact on quality of life in adolescents and their families. *J Pediatr Psychol*. 2001;26:145–153.
13. Lamé I, Peters M, Vlaeyen J, Kleef M, Patijn J. Quality of life in chronic pain is more associated with beliefs about pain, than with pain intensity. *Eur J Pain*. 2005;9:15–24.
14. Terwindt G, Ferrari M, Tijhuis M, Groenen A, Picavet J, Launer L. The impact of migraine on quality of life in the general population: the GEM study. *Neurology*. 2000;55:624–629.

15. Jensen M, Chodroff M, Dworkin R. The impact of neuropathic pain on health-related quality of life: review and implications. *Neurology*. 2007;68:1178–1182.
16. Skevington SM, Carse MS, Williams AC. Validation of the WHOQOL-100: pain management improves quality of life for chronic pain patients. *Clin J Pain*. 2001;17:264–275.
17. Überall M, Müller-Schwefe G. Patient perceptions associated with the 5% lidocaine medicate plaster in daily practice. *Curr Med Res Opin*. 2012;28:901–909.
18. Überall M, Müller-Schwefe G. Low-dose 7-day transdermal buprenorphine in daily clinical practice – perceptions of patients with moderate nonmalignant chronic pain. *Curr Med Res Opin*. 2012;28:1585–1595.
19. Varrassi G, Müller-Schwefe G, Pergolizzi J, et al. Pharmacological treatment of chronic pain – the need for CHANGE. *Curr Med Res Opin*. 2010;26:1231–1245.
20. Ott B. Progress in ethical decision making in the care of the dying. *Dimens Crit Care Nurs*. 2010;29:73–80.
21. World Health Organization. *Achieving Balance in National Opioids Control Policy – Guidelines for Assessment*. Geneva, Switzerland: World Health Organization; 2000.
22. World Health Organization. Cancer pain relief with a guide to opioid availability. 1996. Available from: <http://www.painpolicy.wisc.edu/publicat/11WHOGLs/WHOGLs.pdf>. Accessed May 12, 2011.
23. World Health Organization. *National Cancer Control Programmes: Policies and Management Guidelines*. Geneva, Switzerland: World Health Organization; 2002.
24. Langley P, Müller-Schwefe G, Nicolaou A, Liedgens H, Pergolizzi J, Varrassi G. The societal impact of pain in the European Union: health-related quality of life and healthcare resource utilization. *J Med Econ*. 2010;13:571–581.
25. Robbins L. Refractory chronic migraine: long-term follow-up using a refractory rating scale. *J Headache Pain*. 2012;13:225–229.
26. Kreitler S, Niv D. Cognitive impairment in chronic pain. *Pain Clin Updates*. 2007;15:1–4.
27. Lee DM, Pendleton N, Tajar A, et al. Chronic widespread pain is associated with slower cognitive processing speed in middle-aged and older European men. *Pain*. 2010;151:30–36.
28. Langley P, Müller-Schwefe G, Nicolaou A, Liedgens H, Pergolizzi J, Varrassi G. The impact of pain on labor force participation, absenteeism and presenteeism in the European Union. *J Med Econ*. 2010;13:662–672.
29. Gore M, Sadosky A, Stacey BR, Tai KS, Leslie D. The burden of chronic low back pain: clinical comorbidities, treatment patterns, and healthcare costs in usual care settings. *Spine (Phila Pa 1976)*. 2012;37:E668–E677.
30. Bansback N, Zhang W, Walsh D, et al. Factors associated with absenteeism, presenteeism and activity impairment in patients in the first years of RA. *Rheumatology (Oxford)*. 2012;51:375–384.
31. Linde M, Gustavsson A, Stovner LJ, et al. The cost of headache disorders in Europe: the Eurolight project. *Eur J Neurol*. 2012;19:703–711.
32. Ozgur E, Straub K, Wille S, Engelmann U, Dagtekin O, Gerbershagen HJ. Impact of preoperative pain on postoperative pain chronification. Six-month follow-up after urologic surgery. *Urologe A*. 2011;50:1396–1402. German.
33. Bigal ME, Lipton RB. Migraine chronification. *Curr Neurol Neurosci Rep*. 2011;11:139–148.
34. Woolf A, Zeidler H, Haglund U, et al. Musculoskeletal pain in Europe: its impact and a comparison of population and medical perceptions of treatment in eight European countries. *Ann Rheum Dis*. 2004;63:342–347.
35. Ferreira-Valente MA, Ribeiro JL, Jensen MP, Almeida R. Coping with chronic musculoskeletal pain in Portugal and in the United States: a cross-cultural study. *Pain Med*. 2011;12:1470–1480.
36. Wise EA, Price DD, Myers CD, Heft MW, Robinson ME. Gender role expectations of pain: relationship to experimental pain perception. *Pain*. 2002;96:335–342.
37. Fillingim RB. Sex, gender, and pain: women and men really are different. *Curr Rev Pain*. 2000;4:24–30.
38. Kocoglu D, Ozdemir L. The relation between pain and pain beliefs and sociodemographic-economic characteristics in an adult population. *Agri*. 2011;23:64–70. Turkish.
39. Davies KA, Silman AJ, Macfarlane GJ, et al. The association between neighbourhood socio-economic status and the onset of chronic widespread pain: results from the EPIFUND study. *Eur J Pain*. 2009;13:635–640.
40. Defrin R, Eli I, Pud D. Interactions among sex, ethnicity, religion, and gender role expectations of pain. *Gend Med*. 2011;8:172–183.
41. Gibson S, Helme R. Age-related differences in pain perception and report. *Clin Geriatr Med*. 2001;17:433–456.
42. Wilson AC, Lewandowski AS, Palermo TM. Fear-avoidance beliefs and parental responses to pain in adolescents with chronic pain. *Pain Res Manag*. 2011;16:178–182.
43. Meeker MA, Finnell D, Othman AK. Family caregivers and cancer pain management: a review. *J Fam Nurs*. 2011;17:29–60.
44. Katz JN, Lyons N, Wolff LS, et al. Medical decision-making among Hispanics and non-Hispanic whites with chronic back and knee pain: a qualitative study. *BMC Musculoskelet Disord*. 2011;12:78.
45. Edwards RR, Moric M, Husfeldt B, Buvanendran A, Ivankovich O. Ethnic similarities and differences in the chronic pain experience: a comparison of african american, Hispanic, and white patients. *Pain Med*. 2005;6:88–98.
46. Breivik H, Borchgrevink PC, Allen SM, et al. Assessment of pain. *Br J Anaesth*. 2008;101:17–24.
47. Ni Thuathail A, Welford C. Pain assessment tools for older people with cognitive impairment. *Nurs Stand*. 2011;26:39–46.
48. Freynhagen R, Wirz S, Rolke R. Diagnosis of neuropathic pain. *Ther Umsch*. 2011;68:495–500. German.
49. Mehra M, Hill K, Nicholl D, Schadrack J. The burden of chronic low back pain with and without a neuropathic component: a healthcare resource use and cost analysis. *J Med Econ*. 2012;15:245–252.
50. Park J, Hughes AK. Nonpharmacological approaches to the management of chronic pain in community-dwelling older adults: a review of empirical evidence. *J Am Geriatr Soc*. 2012;60:555–568.
51. Thieme K, Gracely R. Are psychological treatments effective for fibromyalgia pain? *Curr Rheum Rep*. 2009;11:443–450.
52. Kasper S. The psychiatrist confronted with a fibromyalgia patient. *Hum Psychopharmacol*. 2009;24 Suppl 1:S25–S30.
53. Yaster M, Kost-Byerly S, Maxwell L. The management of pain in sickle cell disease. *Ped Clin N Amer*. 2000;47:699–710.
54. Molsberger A. Acupuncture in orthopedics. *Orthopade*. 2012;41:100–105. German.
55. Rispler D, Sara J, Davenport L, Mills B, Iskra C. Underreporting of complementary and alternative medicine use among arthritis patients in an orthopedic clinic. *Am J Orthop (Belle Mead NJ)*. 2011;40:E92–E95.
56. Mick G, Correa-Illanes G. Topical pain management with the 5% lidocaine medicated plaster – a review. *Curr Med Res Opin*. 2012;28:937–951.
57. Lionberger D, Brennan M. Topical nonsteroidal anti-inflammatory drugs for the treatment of pain due to soft tissue injury: diclofenac epolamine topical patch. *J Pain Res*. 2010;3:223–233.
58. Gaudio C, Hao J, Martin-Eauclaire MF, Gabriac M, Delmas P. Menthol pain relief through cumulative inactivation of voltage-gated sodium channels. *Pain*. 2012;153:473–484.
59. Pergolizzi J, Pappagallo M, Raffa R, et al. Preliminary observations of a novel topical oil with analgesic properties for treatment of acute and chronic pain syndromes. *Pain Pract*. 2010;10:201–213.
60. Taylor R Jr, Gan TJ, Raffa RB, et al. A randomized, double-blind comparison shows the addition of oxygenated glycerol triesters to topical mentholated cream for the treatment of acute musculoskeletal pain demonstrates incremental benefit over time. *Pain Pract*. February 5, 2012. [Epub ahead of print.]
61. Jorge LL, Feres CC, Teles VE. Topical preparations for pain relief: efficacy and patient adherence. *J Pain Res*. 2011;4:11–24.



62. Anand P, Bley K. Topical capsaicin for pain management: therapeutic potential and mechanisms of action of the new high-concentration capsaicin 8% patch. *Br J Anaesth*. 2011;107:490–502.
63. Toussaint K, Yang X, Zielinski M, et al. What do we (not) know about how paracetamol (acetaminophen) works? *J Clin Pharm Ther*. 2010;35(6):617–638.
64. James L, Letzig L, Simpson P, et al. Pharmacokinetics of acetaminophen-protein adducts in adults with acetaminophen overdose and acute liver failure. *Drug Metab Dispos*. 2009;37:1779–1784.
65. Bower W, Johns M, Margolis H, Williams I, Bell B. Population-based surveillance for acute liver failure. *Am J Gastroenterol*. 2007;102:2459–2463.
66. Bronstein A, Spyker D, Cantilena L, Green J, Rumack B, Griffin S. 2008 annual report of the American Association of Poison Control Centers' national poison data system (NPDS): 26th annual report. *Clin Toxicol*. 2009;47:911–1084.
67. Sudano I, Flammer A, Périat D, et al. Acetaminophen increases blood pressure in patients with coronary artery disease. *Circulation*. 2010;122:1789–1796.
68. Montgomery B. Does paracetamol cause hypertension? *BMJ*. 2008;336:1190–1191.
69. White W, Campbell P. Blood pressure destabilization on nonsteroidal antiinflammatory agents: acetaminophen exposed? *Circulation*. 2010;122:1779–1781.
70. Doherty M, Hawkey C, Goulder M, et al. A randomised controlled trial of ibuprofen, paracetamol or a combination tablet of ibuprofen/paracetamol in community-derived people with knee pain. *Ann Rheum Dis*. 2011;70:1534–1541.
71. Zhang W, Nuki G, Moskowitz R, et al. OARSI recommendations for the management of hip and knee osteoarthritis: part III: Changes in evidence following systematic cumulative update of research published through January 2009. *Osteoarthritis Cartilage*. 2010;18:476–499.
72. Altman R. Practical considerations for the pharmacologic management of osteoarthritis. *Am J Manag Care*. 2009;15:S236–S243.
73. Rao P, Knaus E. Evolution of nonsteroidal anti-inflammatory drugs (NSAIDs): cyclooxygenase (COX) inhibition and beyond. *J Pharm Pharm Sci*. 2008;11:81s–110s.
74. Ng S, Chan F. NSAID-induced gastrointestinal and cardiovascular injury. *Curr Opin Gastroenterol*. 2010;26:611–617.
75. Lanas A, Perez-Aisa M, Feu F, et al. A nationwide study of mortality associated with hospital admission due to severe gastrointestinal events and those associated with nonsteroidal antiinflammatory drug use. *Am J Gastroenterol*. 2005;100:1685–1693.
76. Schjerning-Olsen A, Fosbøl E, Lindhardsen J, et al. Duration of treatment with nonsteroidal anti-inflammatory drugs and impact on risk of death and recurrent myocardial infarction in patients with prior myocardial infarction: a nationwide cohort study. *Circulation*. 2011;123:2226–2235.
77. European Medicines Agency. Opinion of the committee for medicinal products for human use pursuant to the article 5(3) of regulation (EC) no 726/2004, for nonselective non-steroidal anti-inflammatory drugs (NSAIDs). 2006. Available from: [http://www.ema.europa.eu/docs/en\\_GB/document\\_library/Other/2010/01/WC500054342.pdf](http://www.ema.europa.eu/docs/en_GB/document_library/Other/2010/01/WC500054342.pdf). Accessed March 11, 2012.
78. American Geriatric Society Panel on the Pharmacological Management of Persistent Pain in Older Persons. Pharmacological management of persistent pain in older persons. *J Am Geriatr Soc*. 2009;57:1331–1346.
79. Anastasopoulos KP, Chow W, Ackerman SJ, Tapia C, Benson C, Kim MS. Oxycodone-related side effects: impact on degree of bother, adherence, pain relief, satisfaction, and quality of life. *J Opioid Manag*. 2011;7:203–215.
80. Rosti G, Gatti A, Costantini A, Sabato AF, Zucco F. Opioid-related bowel dysfunction: prevalence and identification of predictive factors in a large sample of Italian patients on chronic treatment. *Eur Rev Med Pharmacol Sci*. 2010;14:1045–1050.
81. Solomon D, Rassen J, Glynn R, Lee J, Levin R, Schneeweiss S. The comparative safety of analgesics in older adults with arthritis. *Arch Intern Med*. 2010;170:1968–1976.
82. Sullivan M, Von Korff M, Banta-Green C, Merrill J, Saunders K. Problems and concerns of patients receiving chronic opioid therapy for chronic non-cancer pain. *Pain*. 2010;149:345–353.
83. Passero C, McCaffery M. Opioid-induced hyperalgesia. *J Perianesth Nurs*. 2012;27:46–50.
84. Raffa R, Pergolizzi J. Opioid-induced hyperalgesia: is it clinically relevant for the treatment of pain patients? *Pain Manag Nurs*. 2012. In press.
85. Adams E, Breiner S, Cicero T, et al. A comparison of the abuse liability of tramadol, NSAIDs, and hydrocodone in patients with chronic pain. *J Pain Symptom Manage*. 2006;31:465–476.
86. Tramadol hydrochloride 50 mg capsules. The Electronic Medicines Compendium. 2011. Available from: <http://www.medicines.org.uk/emc/medicine/24186/SPC/tramadol%20hydrochloride%2050mg%20capsules/>. Accessed December 15, 2011.
87. Raffa R. Pharmacological aspects of successful long-term analgesia. *Clin Rheumatol*. 2006;25 Suppl 1:S9–S15.
88. Raffa R, Clark-Vetri R, Tallarida R, Wertheimer A. Combination strategies for pain management. *Expert Opin Pharmacother*. 2003;4:1697–1708.
89. Schilling A, Corey R, Leonard M, Eghtesad B. Acetaminophen: old drug, new warnings. *Cleve Clin J Med*. 2010;77:19–27.
90. Raffa R, Friderichs E, Reimann W, Shank R, Codd E, Vaught J. Opioid and nonopioid components independently contribute to the mechanism of action of tramadol, an 'atypical' opioid analgesic. *J Pharmacol Exp Ther*. 1992;260:275–285.
91. Filitz J, Ihmsen H, Günther W, et al. Supra-additive effects of tramadol and acetaminophen in a human pain model. *Pain Manag Nurs*. 2008;136:262–270.
92. Perrot S, Krause D, Crozes P, Naim C. Efficacy and tolerability of paracetamol/tramadol (325 mg/37.5 mg) monotherapy in patients with subacute low back pain: a multicenter, randomized, double-blind, parallel-group, 10-day treatment study. *Clin Ther*. 2006;28:1592–1606.
93. Rawal N, Macquaire V, Catala E, Berti M, Costa R, Wietlisbach M. Tramadol/paracetamol combination tablet for postoperative pain following ambulatory hand surgery: a double-blind, double-dummy, randomized, parallel-group trial. *J Pain Res*. 2011;4:103–110.
94. Mejjad O, Serrie A, Ganry H. Epidemiological data, efficacy and safety of a paracetamol-tramadol fixed combination in the treatment of moderate-to-severe pain. SALZA: a post-marketing study in general practice. *Curr Med Res Opin*. 2011;27:1013–1020.
95. Hewitt D, Todd K, Xiang J, Jordan D, Rosenthal N. Tramadol/acetaminophen or hydrocodone/acetaminophen for the treatment of ankle sprain: a randomized, placebo-controlled trial. *Ann Emerg Med*. 2007;49:468–480.
96. Lee E, Lee E, Park B, et al. Tramadol 37.5-mg/acetaminophen 325-mg combination tablets added to regular therapy for rheumatoid arthritis pain: a 1-week, randomized, double-blind, placebo-controlled trial. *Clin Ther*. 2006;28:2052–2060.
97. Raffaelli W, Pari C, Corvetta A, et al. Oxycodone/acetaminophen at low dosage: an alternative pain treatment for patients with rheumatoid arthritis. *J Opioid Manag*. 2010;6:40–46.
98. Choi C, Song J, Kang Y, et al. A 2-week, multicenter, randomized, double-blind, double-dummy, add-on study of the effects of titration on tolerability of tramadol/acetaminophen combination tablet in Korean adults with knee osteoarthritis pain. *Clin Ther*. 2007;29:1381–1389.
99. Corsinovi L, Martinelli E, Fonte G, et al. Efficacy of oxycodone/acetaminophen and codeine/acetaminophen vs conventional therapy in elderly women with persistent, moderate to severe osteoarthritis-related pain. *Arch Gerontol Geriatr*. 2009;49:378–382.
100. Pareek A, Chandurkar N, Ambade R, Chandanwale A, Bartakke G. Efficacy and safety of etodolac-paracetamol fixed dose combination in patients with knee osteoarthritis flare-up: a randomized, double-blind comparative evaluation. *Clin J Pain*. 2010;26:561–566.



101. Conaghan P, O'Brien C, Wilson M, Schofield J. Transdermal buprenorphine plus oral paracetamol vs an oral codeine-paracetamol combination for osteoarthritis of hip and/or knee: a randomised trial. *Osteoarthritis Cartilage*. 2011;19:930–938.
102. Palangio M, Morris E, Doyle RJ, Dornseif B, Valente T. Combination hydrocodone and ibuprofen versus combination oxycodone and acetaminophen in the treatment of moderate or severe acute low back pain. *Clin Ther*. 2002;24:87–99.
103. Ruoff G, Rosenthal N, Jordan D, Karim R, Kamin M. Tramadol/acetaminophen combination tablets for the treatment of chronic lower back pain: a multicenter, randomized, double-blind, placebo-controlled outpatient study. *Clin Ther*. 2003;25:1123–1141.
104. Silberstein SD, Mannix LK, Goldstein J, et al. Multimechanistic (sumatriptan-naproxen) early intervention for the acute treatment of migraine. *Neurology*. 2008;71:114–121.
105. Pfaffenrath V, Diener HC, Pageler L, Peil H, Aicher B. OTC analgesics in headache treatment: open-label phase vs randomized double-blind phase of a large clinical trial. *Headache*. 2009;49:638–645.
106. Diener HC, Peil H, Aicher B. The efficacy and tolerability of a fixed combination of acetylsalicylic acid, paracetamol, and caffeine in patients with severe headache: a post-hoc subgroup analysis from a multicentre, randomized, double-blind, single-dose, placebo-controlled parallel group study. *Cephalalgia*. 2011;31:1466–1476.
107. Bennett R, Kamin M, Kamin R, Rosenthal N. Tramadol and acetaminophen combination tablets in the treatment of fibromyalgia pain: a double-blind, randomized, placebo-controlled study. *Am J Cardiol*. 2003;114:537–545.
108. Ko S, Kwon H, Yu J, et al. Comparison of the efficacy and safety of tramadol/acetaminophen combination therapy and gabapentin in the treatment of painful diabetic neuropathy. *Diabet Med*. 2010;27:1033–1040.
109. White P, Joshi G, Carpenter R, Fragen R. A comparison of oral ketorolac and hydrocodone-acetaminophen for analgesia after ambulatory surgery: arthroscopy versus laparoscopic tubal ligation. *Anesth Analg*. 1997;85:37–43.
110. Sniezek P, Brodland D, Zitelli J. A randomized controlled trial comparing acetaminophen, acetaminophen and ibuprofen, and acetaminophen and codeine for postoperative pain relief after Mohs surgery and cutaneous reconstruction. *Dermatol Surg*. 2011;37:1007–1013.
111. Zhang W, Moskowitz R, Nuki G, et al. OARS recommendations for the management of hip and knee osteoarthritis, Part II: OARS evidence-based, expert consensus guidelines. *Osteoarthritis Cartilage*. 2008;16:137–162.
112. Antman E, Bennett J, Daugherty A, Furberg C, Roberts H, Taubert K. Use of nonsteroidal antiinflammatory drugs: an update for clinicians: a scientific statement from the American Heart Association. *Circulation*. 2007;115:1634–1642.
113. National Institute for Health and Clinical Excellence. The care and management of osteoarthritis in adults. 2008. Available from: <http://www.nice.org.uk/nicemedia/pdf/CG59NICEguideline.pdf>. Accessed December 15, 2010.
114. Schnitzer T. Update on guidelines for the treatment of chronic musculoskeletal pain. *Clin Rheumatol*. 2006;25 Suppl 1:S22–S29.
115. Altman R. Early management of osteoarthritis. *Am J Manag Care*. 2010;16:S41–S47.
116. NICE. Rheumatoid arthritis: the management of rheumatoid arthritis in adults. NICE Clinical Guideline 2009. Available from: <http://www.nice.org.uk/nicemedia/live/12131/43327/43327.pdf>. Accessed December 18, 2010.
117. Luqmani R, Hennell S, Estrach C, et al. British Society for Rheumatology and British Health Professionals in Rheumatology guideline for the management of rheumatoid arthritis (the first two years). *Rheumatology (Oxford)*. 2006;45:1167–1169.
118. Luqmani R, Hennell S, Estrach C, et al. British Society for Rheumatology and British Health Professionals in Rheumatology guideline for the management of rheumatoid arthritis (after the first 2 years). *Rheumatology (Oxford)*. 2009;48:436–439.
119. Combe B, Landewe R, Lukas C, et al. EULAR recommendations for the management of early arthritis: report of a task force of the European Standing Committee for International Clinical Studies Including Therapeutics (ESCISIT). *Ann Rheum Dis*. 2007;66:34–45.
120. Carville S, Arendt-Nielsen S, Bliddal H, et al. EULAR evidence-based recommendations for the management of fibromyalgia syndrome. *Ann Rheum Dis*. 2008;67:536–541.
121. Buckhardt C, Goldenberg D, Crofford L, et al. Guideline for the management of fibromyalgia syndrome pain in adults and children. Clinical practice guideline no. 4. 2005. Available from: <http://www.ampainsoc.org/pub/fibromyalgia.htm>. Accessed December 18, 2010.
122. Airaksinen O, Brox J, Cedraschi C, et al. Chapter 4. European guidelines for the management of chronic nonspecific low back pain. *Eur Spine J*. 2006;15 Suppl 2:S192–S300.
123. Chou R, Hoyt-Huffman L. Medications for acute and chronic low back pain: a review of the evidence for an American Pain Society/American College of Physicians clinical practice guideline. *Ann Intern Med*. 2007;147:505–514.
124. National Institute for Health and Clinical Excellence. Low back pain: early management of persistent non-specific low back pain. 2009. Available from: <http://www.nice.org.uk/nicemedia/live/11887/44343/44343.pdf>. Accessed December 18, 2010.
125. Pergolizzi J, Labhsetwar S, Puenpatom R, Joo S, Ben-Joseph R, Summers K. Prevalence of exposure to potential CYP450 pharmacokinetic drug-drug interactions among patients with chronic low back pain taking opioids. *Pain Pract*. 2011;11:230–239.
126. Daly F, Fountain J, Murray L, Graudins A, Buckley N. Guidelines for the management of paracetamol poisoning in Australia and New Zealand – explanation and elaboration. A consensus statement from clinical toxicologists consulting to the Australasian poisons information centres. *Med J Aust*. 2008;188:296–301.
127. World Health Organization. WHO's pain ladder. 1986. Available from: <http://www.who.int/cancer/palliative/painladder/en/>. Accessed June 15, 2012.
128. Vargas-Schaffer G. Is the WHO analgesic ladder still valid? *Can Fam Physician*. 2010;56:514–517.
129. Pergolizzi J, Alegre C, Blake D, et al. Current considerations for the treatment of severe chronic pain: the potential for tapentadol. *Pain Pract*. 2012;12:290–306.

## Nursing: Research and Reviews

### Publish your work in this journal

Nursing: Research and Reviews is an international, peer-reviewed, open access journal publishing original research, reports, reviews and commentaries on all aspects of nursing and patient care. These include patient education and counselling, ethics, management and organizational issues, diagnostics and prescribing, economics and

Submit your manuscript here: <http://www.dovepress.com/nursing-research-and-reviews-journal>

Dovepress

resource management, health outcomes, and improving patient safety in all settings. The manuscript management system is completely online and includes a very quick and fair peer-review system. Visit <http://www.dovepress.com/testimonials.php> to read real quotes from published authors.