

# Nanoparticles containing allotropes of carbon have genotoxic effects on glioblastoma multiforme cells

Mateusz Hinzmann<sup>1</sup>  
 Sławomir Jaworski<sup>1</sup>  
 Marta Kutwin<sup>1</sup>  
 Joanna Jagiełło<sup>2</sup>  
 Rafał Koziński<sup>2</sup>  
 Mateusz Wierzbicki<sup>1</sup>  
 Marta Grodzik<sup>1</sup>  
 Ludwika Lipińska<sup>2</sup>  
 Ewa Sawosz<sup>1</sup>  
 Andrè Chwalibog<sup>3</sup>

<sup>1</sup>Division of Nanobiotechnology, Warsaw University of Life Sciences,

<sup>2</sup>Institute of Electronic Materials Technology, Warsaw, Poland;

<sup>3</sup>Department of Veterinary Clinical and Animal Sciences, University of Copenhagen, Copenhagen, Denmark

**Abstract:** The carbon-based nanomaterial family consists of nanoparticles containing allotropes of carbon, which may have a number of interactions with biological systems. The objective of this study was to evaluate the toxicity of nanoparticles comprised of pristine graphene, reduced graphene oxide, graphene oxide, graphite, and ultradispersed detonation diamond in a U87 cell line. The scope of the work consisted of structural analysis of the nanoparticles using transmission electron microscopy, evaluation of cell morphology, and assessment of cell viability by Trypan blue assay and level of DNA fragmentation of U87 cells after 24 hours of incubation with 50 µg/mL carbon nanoparticles. DNA fragmentation was studied using single-cell gel electrophoresis. Incubation with nanoparticles containing the allotropes of carbon did not alter the morphology of the U87 cancer cells. However, incubation with pristine graphene and reduced graphene oxide led to a significant decrease in cell viability, whereas incubation with graphene oxide, graphite, and ultradispersed detonation diamond led to a smaller decrease in cell viability. The results of a comet assay demonstrated that pristine graphene, reduced graphene oxide, graphite, and ultradispersed detonation diamond caused DNA damage and were therefore genotoxic in U87 cells, whereas graphene oxide was not.

**Keywords:** nanostructures, graphene, graphite, diamond, glioblastoma multiforme, genotoxicity

## Introduction

Glioblastoma multiforme (GBM) is one of the most common and malignant primary tumors of the brain. Despite the use of very aggressive treatment methods, including surgical resection, local radiotherapy, and chemotherapy, its infiltrative and intensive growth makes it mostly incurable.<sup>1,2</sup> Moreover, even the most promising chemotherapeutics may have toxic effects on healthy cells, which can be fatal in GBM given that the tumor is surrounded by healthy neurons and astroglial cells. The survival of a patient diagnosed with GBM is unlikely to exceed 12 months.<sup>3</sup> Therefore, it is important to develop new treatments that extend survival in patients with GBM.

Carbon nanoparticles have recently been identified as promising agents in cancer therapy,<sup>4-7</sup> and are strong candidates for becoming viable materials in biomedical applications because of their biocompatibility when compared with metal nanoparticles.<sup>8-10</sup> However, nanoparticles containing allotropes of carbon show different behavior, routes of distribution, and toxicity within a living organism.<sup>11,12</sup>

Graphene is a two-dimensional, one atom-thick layer of sp<sup>2</sup> bonded carbon.<sup>13</sup> This means that carbon atoms, through hybridization between one *s* orbital and two *p* orbitals, form trigonal planar structures with  $\sigma$  bonds between them and, perpendicular to the

Correspondence: Andrè Chwalibog  
 Department of Veterinary Clinical and Animal Sciences, University of Copenhagen, Groennegaardsvej 3, Frederiksberg 1870, Copenhagen, Denmark  
 Email ach@sund.ku.dk

planar structure,  $\pi$  bonds. Graphene has been investigated for use in a number of medical and biological areas, including drug/gene delivery, cancer therapy, biosensing, bioimaging, antibacterial materials, and scaffolds for cell culture.<sup>14</sup> However, different forms of graphene, such as graphene oxide (GO) and reduced graphene oxide (rGO), produced by chemical reactions,<sup>15</sup> or pristine graphene (GN), produced by physical methods, may have different properties.<sup>16</sup> Akhavan et al<sup>17</sup> showed that the genotoxicity and cytotoxicity of graphene sheets and nanoplatelets in human mesenchymal stem cells depended on their concentration, size, and duration of exposure. Graphene nanoplatelets with an average lateral dimension of  $11 \pm 4$  nm have a very high cytotoxic potential and ability to penetrate into the nucleus of human mesenchymal stem cells, causing DNA fragmentation and chromosomal aberrations, even at very low concentrations. It was shown that GO had no significant cytotoxic effects in A549 cells;<sup>18</sup> however, some modifications of GO, causing changes in surface charge, had cytotoxic and genotoxic effects in human lung fibroblasts.<sup>19</sup> Recently, Jaworski et al<sup>20</sup> demonstrated dose-dependent cytotoxicity of GN nanoplatelets on GBM cells. Further, they showed that flakes of graphene adhered to the cell membrane and induced apoptosis, with necrosis observed in a small number of cells. It seems that, due to the high diversity of graphene-related structures, there are still not enough studies comparing the bioactivity of the different graphenes to determine their potential application in cancer therapy.

The other promising carbon nanoparticles are those comprised of graphite and diamond. Previous studies suggested that graphite nanoparticles inhibit angiogenesis without affecting embryonic development.<sup>21</sup> These antiangiogenic effects indicate that graphite could be a potential anticancer agent or a supporting factor in cancer therapy. In comparison with graphene and graphite, diamond nanoparticles consist of  $sp^3$  bonded carbon atoms, forming a structure with tetrahedral symmetry. Diamond nanoparticles are highly biocompatible and may be effective agents for bioimaging, drug delivery, and cancer therapy.<sup>8,22,23</sup> However, diamond nanoparticles incubated with HeLa cells in serum-free medium were shown to be highly cytotoxic, with death of almost all cells after 6 hours of incubation.<sup>22</sup> It was also demonstrated that diamond nanoparticles may damage the DNA of embryonic stem cells.<sup>24</sup> Nevertheless, the specific mechanism of these interactions is still not clear.

Graphene and its related forms, graphite and diamond, being different carbon atom structures, may have cytotoxic effects that could be utilized as anticancer treatments, but

their genotoxicity is unknown. Knowing the cytotoxicity related to genotoxic effects may be key information for applying graphene, graphite, and diamond nanostructures as agents or drug carriers in anticancer therapy. Moreover, until now, there has been insufficient information regarding the genotoxicity of graphene, diamond, and graphite nanoparticles towards GBM cells. We hypothesized that because of their physicochemical characteristics, different forms of graphene and related graphite and diamond nanoparticles may exert different toxic effects on GBM cells. Therefore, the objective of this study was to compare the genotoxic effects of nanoparticles containing different allotropes of carbon on GBM cells *in vitro*.

## Materials and methods

### Preparation and characterization of carbon nanoparticles

Graphene powders (purity >99.99%) were purchased as follows: GN from SkySpring Nanomaterials (Houston, TX, USA), and rGO and GO from the Institute of Electronic Materials Technology (Warsaw, Poland). GN was produced by liquid-phase exfoliation of graphite, whereas GO was produced by chemical oxidation of graphite and rGO by chemical reduction of GO. Graphite nanoparticles (purity >93%, synthesized by the detonation method) were purchased from SkySpring Nanomaterials. Ultradispersed detonation diamond (UDD, purity >95%) was purchased from SkySpring Nanomaterials. UDD was synthesized by the Danilenko method.<sup>25</sup> The shape and size of the nanoparticles were inspected using a JEM-2000EX transmission electron microscope operating at 80 keV (JEOL Ltd, Tokyo, Japan). The samples for transmission electron microscopy were prepared by placing hydrocolloid droplets onto Formvar-coated copper grids (Agar Scientific, Stansted, UK). Immediately after the droplets had dried in dry air, the grids were inserted into the transmission electron microscope. The test was performed in triplicate. The zeta potential was measured in water by a ZEN3500 Zetasizer Nano ZS (Malvern Instruments, Malvern, UK).

Prior to application, the carbon nanoparticles were dispersed in ultrapure water to prepare a 1.0 mg/mL solution. The solution was sonicated for 30 minutes and diluted to a concentration of 50  $\mu$ g/mL with  $1 \times$  Dulbecco's Modified Eagle's Medium (Sigma-Aldrich, St Louis, MO, USA).

### Cell cultures

A human GBM U87 cell line was obtained from the American Type Culture Collection (Manassas, VA, USA) and cultured

in Dulbecco's Modified Eagle's Medium with addition of 10% fetal bovine serum and 1% penicillin and streptomycin (Sigma-Aldrich) at 37°C in a humidified atmosphere of 5% CO<sub>2</sub> and 95% air inside a NuAire DH AutoFlow CO<sub>2</sub> air-jacketed incubator (Plymouth, MN, USA).

## Cell morphology

The U87 cells were incubated on six-well plates (1×10<sup>5</sup> cells per well) and cultivated for 24 hours. GN, rGO, GO, graphite, and UDD were introduced to the cells separately at a constant concentration of 50 µg/mL. Cells cultured without the addition of nanoparticles were used as the control group. After 24 hours of exposure to the nanoparticles, the medium was removed and the cells were stained using the May-Grünwald-Giemsa (Sigma-Aldrich) method, and their morphology was investigated using a CKX 41 epifluorescent inverted microscope with a fluorescent filter (Olympus, Tokyo, Japan); images were captured using a ProgRes<sup>®</sup> c12 camera (Jenoptik, Jena, Germany).

## Cell viability

Cell viability was evaluated using Trypan blue (Sigma-Aldrich). U87 cells were cultivated in six-well plates (5×10<sup>5</sup> cells per well) and incubated for 24 hours. GN, rGO, GO, graphite, and UDD were then introduced separately to the cells at a concentration of 50 µg/mL for all types of nanoparticles. Cells without nanoparticles were used as the control. After 24 hours, the medium was removed, and the cells were detached using 0.005% trypsin. Next, 50 µL of a Trypan blue dye solution was mixed with 50 µL of cell suspension. The mixture was placed onto counting slides and counted using a TC10<sup>™</sup> automated cell counter (BioRad, Hercules, CA, USA).

## Single cell gel electrophoresis

The genotoxicity of GN, rGO, GO, graphite, and UDD was evaluated using single-cell gel electrophoresis (the comet assay).<sup>26,27</sup> This procedure was based on the modified protocol described by Dhawan et al.<sup>28</sup> U87 cells were incubated for 24 hours in six-well plates (1×10<sup>6</sup> cells per well). GN, rGO, GO, graphite, and UDD were introduced to the cells separately at a constant concentration of 50 µg/mL. Cells grown without the addition of nanoparticles were used as the control group. After 24 hours of exposure to nanoparticles, the medium was removed, and the cells were rinsed with phosphate-buffered saline and trypsinized using 0.005% trypsin for 5 minutes. Higher concentrations of trypsin may increase DNA damage, so were not used. The cells were

then washed and suspended in 1 mL of phosphate-buffered saline. Approximately 10,000 cells in 10 µL were mixed with low melting point agarose (A9414, Sigma-Aldrich) and immediately applied on a standard microscope glass slide, which had been coated a day earlier with 1% normal melting agarose (RM273, HiMedia Laboratories, Mumbai, India). The slides were immersed in cold lysing solution and stored for 90 minutes in the dark at 4°C. The slides were placed into DNA Comet electrophoretic system trays (Kucharczyk, Techniki Elektroniczne, Warsaw, Poland) and covered with fresh electrophoresis alkaline buffer (300 mM NaOH, 1 mM ethylenediaminetetraacetic acid, pH >13) for 20 minutes to allow unwinding of DNA and expression of alkali-labile damage. Next, electrophoresis was conducted at 24 V for 30 minutes. The slides were then gently lifted from the buffer, drained, and immersed in neutralization buffer (0.4 M Tris, pH 7.5) for 5 minutes. The slides were then drained, and this step was repeated twice. Next, the slides were stained using 50 µL of 4', 6-diamidino-2-phenylindole (D9542, Sigma-Aldrich). All of the above steps were performed under dimmed light to prevent any DNA damage from fluorescent white light. The slides were viewed using a CKX 41 epifluorescent inverted microscope with a fluorescent filter, and the image was captured with a ProgRes c12 camera. At least 50 cells per group were randomly selected, photographed, and analyzed using Comet Assay Software Project software.<sup>29</sup>

## Statistical analysis

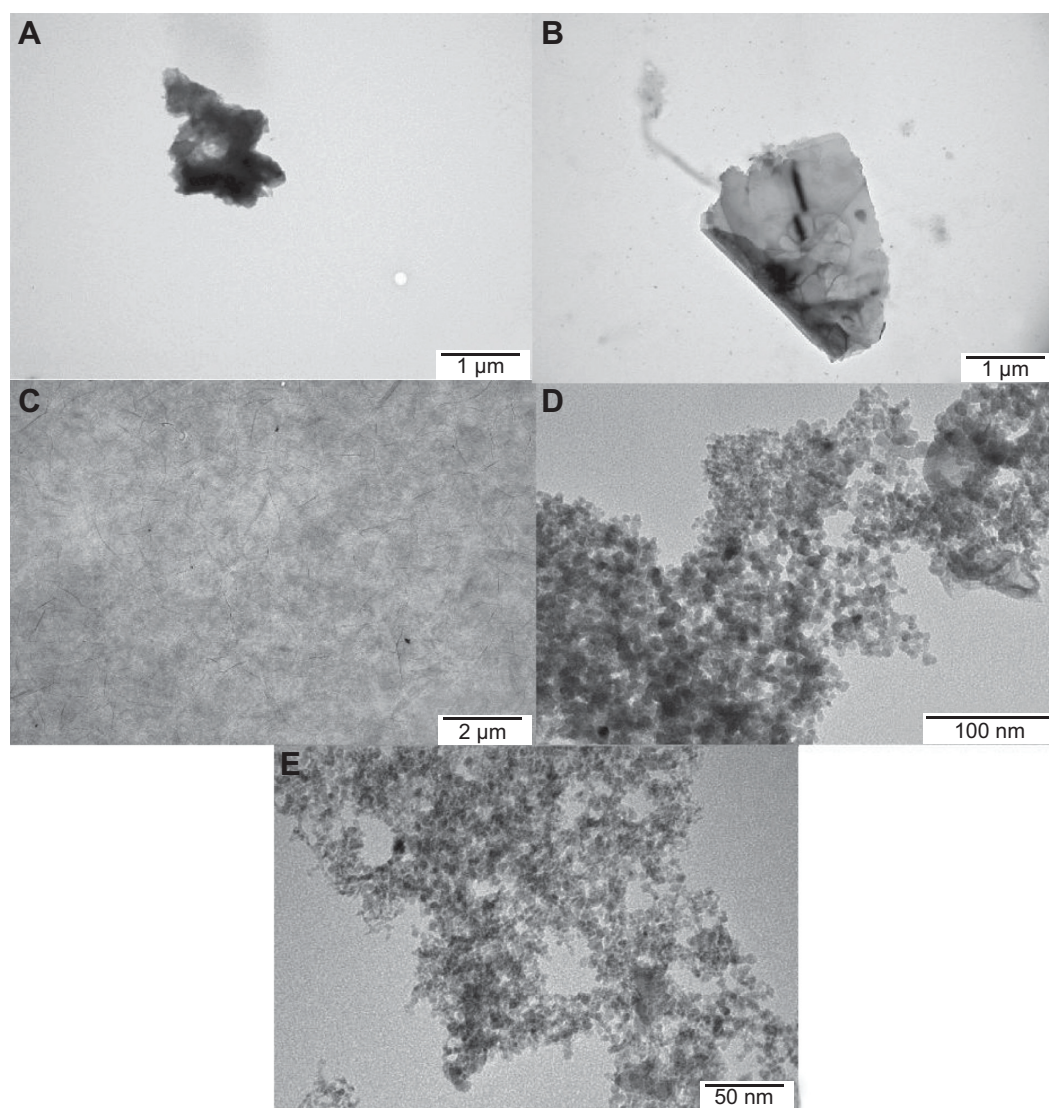
The data were analyzed using one-way analysis of variance followed by Tukey's multiple range test. *P*-values <0.05 were considered to be statistically significant. Statgraphics Centurion software (StatPoint Technologies, Warrenton, VA, USA) was used for the statistical analysis.

## Results

### Characterization of nanoparticles containing carbon allotropes

The mean zeta potential for the nanoparticle samples was −9.61 for GN, −38.3 for rGO, −45.2 for GO, 28.7 for graphite, and −39.3 for UDD.

Figure 1 shows representative transmission electron micrographs of the nanoparticles. Although the thickness of the materials used was in the nanoscale range, the surface area of the graphene sheets was not, ranging from 450 nm to 1.5 µm and forming agglomerates over 5 µm in diameter. The variation in size of the GO nanoparticles was greater, ranging from 100 nm to agglomerates as large as 10 µm. Most of the sheets of



**Figure 1** Characterization of nanoparticles by transmission electron microscopy. (A) Reduced graphene oxide, (B) pristine graphene, (C) graphene oxide, (D) ultradispersed detonation diamond, and (E) graphite.

graphene were visible as a single layer or a few layers. rGO showed the largest irregularities in shape, especially on the edges, forming sharp and rough structures. GN nanoparticles also had irregular and sharp edges. On the other hand, GO had more smooth edges and formed more regular structures. Both UDD and graphite had a size distribution between 4 nm and 5 nm and showed a tendency to form agglomerates.

## Cell morphology

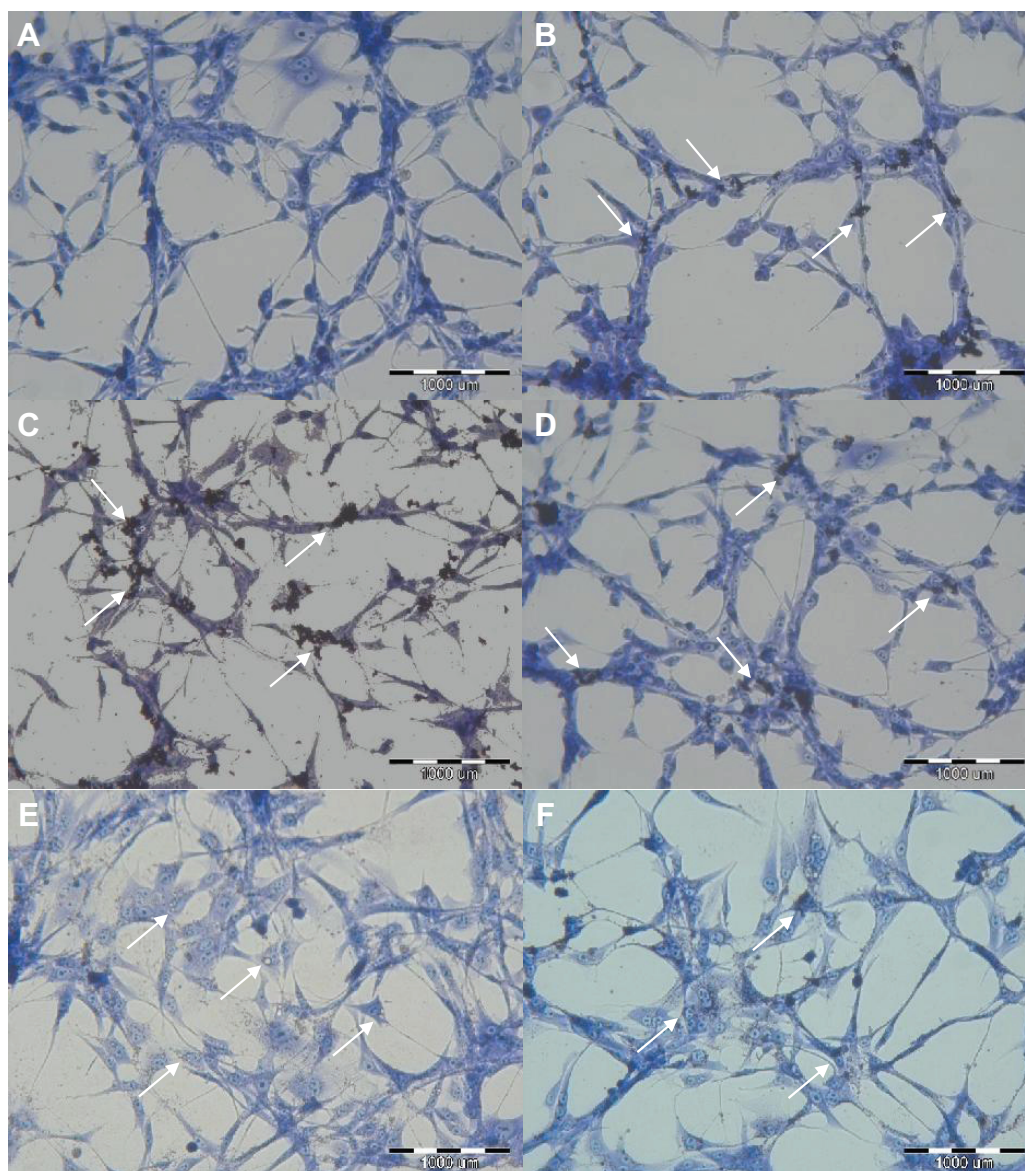
Images from May-Grünwald-Giemsa (Figures 2B–2D) showed high affinity of graphene for the cell membrane, specifically for the body of the cell rather than its protrusions. Moreover, the images show very high uptake of UDD and graphite (Figures 2E and 2F). However, when compared with the control group, none of the nanoparticles altered the cell morphology.

## Cell viability

The viability assay (Figure 3) revealed that incubation of U87 cells with rGO, GN, GO, graphite, and UDD resulted in an increase in cell mortality. Incubation with GN and rGO markedly decreased cell viability, whereas incubation with GO, graphite, and UDD led to a small decrease in viability.

## Genotoxicity

The comet assay showed formation of comets in cells incubated with GN, rGO, graphite, and UDD, indicating genotoxic properties. In contrast, cells treated with GO did not form comets, which was similar to cells from the control group (Figure 4). Statistical analysis showed that rGO, GN, graphite, and UDD were highly genotoxic towards U87 cells, whereas GO was not (Figure 5).



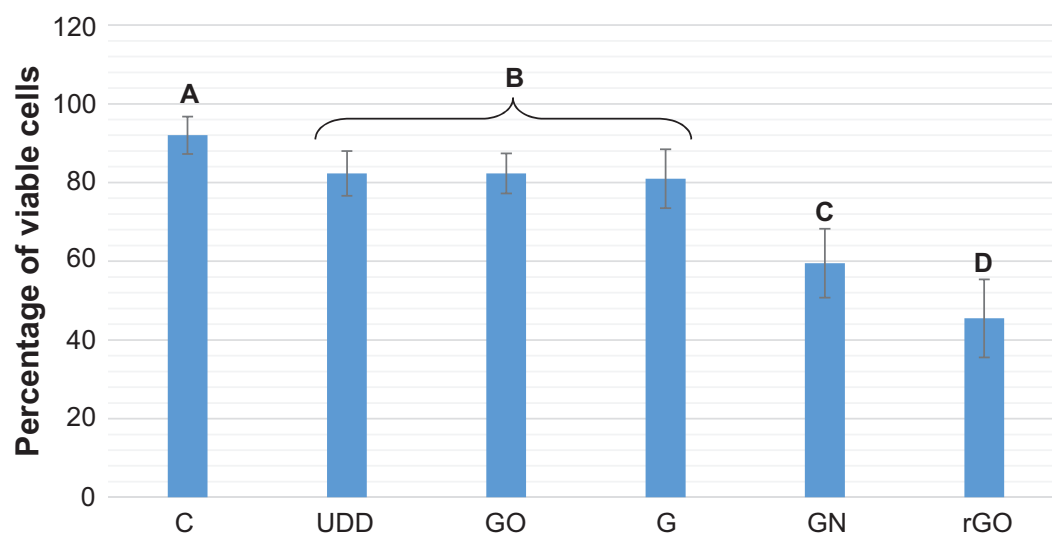
**Figure 2** Evaluation of U87 cell morphology using May-Grünwald-Giemsa staining. Images show control cells (A) and cells incubated with graphene oxide (B), reduced graphene oxide (C), pristine graphene (D), ultradispersed detonation diamond (E), and graphite (F). Arrows point to graphene (B–D), ultradispersed detonation diamond (E), and graphite (F).

## Discussion

In the present studies GN, rGO, GO, graphite, and UDD were introduced to the cells at the concentration of 50 µg/mL. This concentration was chosen based on our earlier finding that at 50 µg/mL (comparing with lower and higher concentrations) most cells were viable.<sup>20</sup> Our measurements were carried out only in the U87 cell line, and the responses to graphene are only specific for this line.<sup>20</sup> Although this limits the generalizability of our results, they are still indicative of the responses of cancer cells to graphene and other carbon allotropes.

Visualization of GN, rGO, and GO (Figure 1) showed that the thickness of the graphene-based materials used was

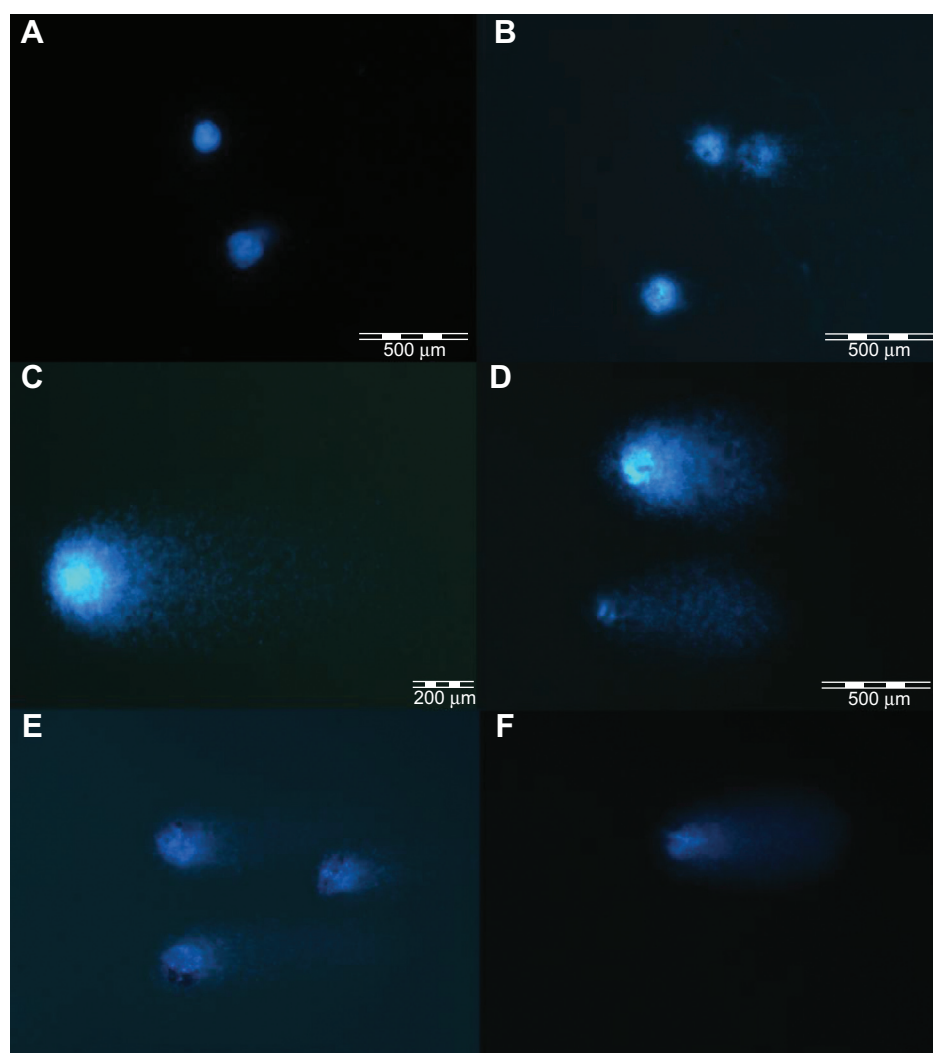
consistent with their characteristic thin layer of bonded carbon atoms. The high affinity of graphene for cell membranes (Figures 2B–2D), specifically the body of the cell rather than its protrusions, is in agreement with previous reports.<sup>20</sup> However, graphene was not able to penetrate the cell membrane caused by the high surface area. In contrast with graphene, UDD penetrated the cell membranes (Figure 2E). According to previous studies, diamond nanoparticles up to 100 nm in size are internalized by cells via macropinocytosis and clathrin-mediated pathways,<sup>12,30</sup> and localize mainly in endocytic and clathrin-coated vesicles.<sup>12,30</sup> Smaller particles (5–10 nm) are able to escape the vesicles or penetrate into the cells via



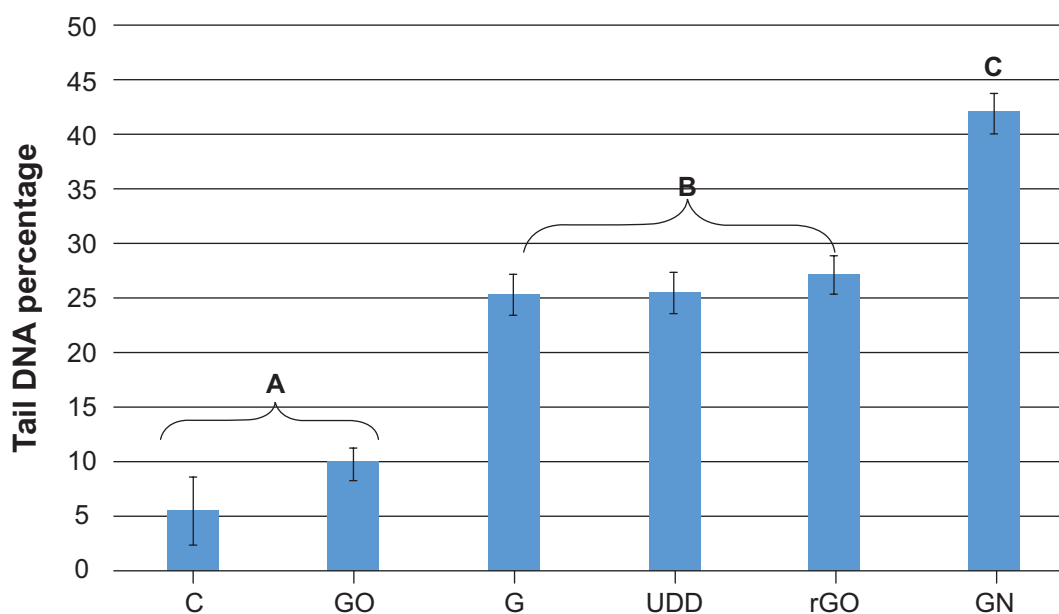
**Figure 3** Cell viability assay.

**Notes:** The columns with different letters (A–D) indicate significant differences between groups ( $P < 0.05$ ).

**Abbreviations:** C, control; GO, graphene oxide; G, graphite; UDD, ultradispersed detonation diamond; rGO, reduced graphene oxide; GN, pristine graphene.



**Figure 4** Images of comets from single-cell gel electrophoresis stained with DAPI (4', 6-diamidino-2-phenylindole). Images show control cells (A) and cells incubated with graphene oxide (B), graphite (C), pristine graphene (D), graphite (E), and ultradispersed detonation diamond (F).



**Figure 5** Tail DNA percentage.

**Notes:** The columns with different letters (**A–C**) indicate significant differences between groups ( $P < 0.05$ ).

**Abbreviations:** C, control; GN, pristine graphene; rGO, reduced graphene oxide; GO, graphene oxide; G, graphite; UDD, ultradispersed detonation diamond.

passive transport.<sup>12</sup> In our study, graphite nanoparticles also penetrated cell membranes (Figure 2F). The exact mechanism of this process is unknown, although the size of graphite, which is similar to the size of UDD, may play a role.

Incubation with GN and rGO markedly decreased cell viability, and may be attributable to the physical and chemical properties of graphene. rGO showed a high affinity for the cell membranes, but the irregular and sharp edges of rGO and GN could be damaging the integrity of the membrane.<sup>31</sup> Another explanation is that rGO and GN activate receptors present on the cell membrane, which may cause apoptosis of cells by activation of the mitochondrial pathway associated with the combined role of transforming growth factor-beta and mitogen-activated protein kinases.<sup>20,32</sup> On the other hand, GO, which has a high content of oxygen, regular edges, a smaller size, and hydrophilic properties, increased cell mortality only slightly. Recent studies also showed that GO had very low cytotoxicity and could not induce apoptosis in RPMI-8226 cells.<sup>33</sup> However, further studies of internalization and localization of graphene within cells are required. UDD uptake, as previously mentioned, did not cause any significant membrane damage and therefore did not increase cell mortality. Other studies<sup>8,23</sup> have shown that the presence of diamond nanoparticles inside cells is not cytotoxic. It is possible that graphite nanoparticles, which are similar in size to UDD, also penetrated the cell membrane without inducing membrane damage or affecting cell mortality.

Images of DNA comets indicate that GN, rGO, graphite, and UDD, but not GO, have a strong genotoxic effect in U87 cells (Figure 4). Statistical analysis of the study data confirmed that, after 24 hours of incubation with nanoparticles at a concentration of 50 µg/mL, GN, rGO, graphite, and UDD, severe genotoxicity occurred in U87 cells, whereas GO did not seem to have any genotoxic effects (Figure 5). The genotoxicity of GN and rGO may be explained by the high mobility and sharp edges of graphene. Penetration of graphene nanosheets can partially damage the membrane of the cell, resulting in destruction of the cell. GN and rGO can then interact directly with the DNA in the nucleus of the cell. This fact is confirmed by experimental data showing that the threshold for graphene genotoxicity is significantly lower than the threshold of its cytotoxicity, which can be explained by the direct interaction between graphene and nuclear DNA.<sup>17,31</sup> The difference in genotoxicity between GN, rGO, and GO might be attributable to the different structures of rGO and GO. rGO and GN, which are hydrophobic and have many more rough edges, might be more potent in damaging cell membranes and penetrating into the cell. They can then interact directly with nuclear DNA, with significant genotoxic effects. GO has smoother edges and hydrophilic properties, and seems to be less potent in terms of penetrating cell compartments and interacting with DNA, resulting in the absence of genotoxic effects. Furthermore, it has been demonstrated that GO particles smaller than 500 nm may be internalized via clathrin-mediated

endocytosis by interaction with proteins.<sup>34</sup> On the other hand, Yue et al<sup>35</sup> showed that 350 nm GO are wrapped by active filopodia of macrophages, while 2 µm GO enter cells nearly perpendicularly. This mechanism may trap GO inside vesicles, making it impossible for GO to penetrate into the nucleus and interact directly with DNA.

UDD was very potent in penetrating the cell membrane. Previous studies have demonstrated that diamond nanoparticles have a high level of biocompatibility, and are located in the cytoplasm and perinuclear region but do not enter the nucleus.<sup>12,30</sup> However, our study indicated otherwise. UDD induced a high genotoxic effect in U87 cells. The mechanism of this interaction is still unclear, but is possibly due to the ability of diamond to bind with proteins and somehow interrupt cellular DNA repair mechanisms. Graphite nanoparticles had genotoxic effects similar to those of UDD. This may be explained by the small size of graphite. It is possible that these small nanoparticles may penetrate directly into the nucleus or disrupt the function of proteins essential for DNA repair.

It has to be underlined that this preliminary study indicated different effects of the applied carbon allotropes on cell viability and DNA damage, thereby, showing directions for further research on mechanisms of action of carbon allotropes on GBM cell responses.

## Conclusion

Incubation of U87 cells for 24 hours with 50 µg/mL GN, rGO, GO, graphite, or UDD resulted in decreased cell viability. GN, rGO, graphite, and UDD showed high levels of genotoxicity in U87 cells, whereas GO did not. These preliminary findings indicate the potential use of GN, rGO, graphite, and UDD in the direct elimination of GBM cells or GO as a drug nanocarrier with minimal toxicity.

## Acknowledgment

This work was supported by a grant from the Polish National Research Council (NCN OPUS 2011/03/B/NZ9/03387).

## Disclosure

The authors report no conflicts of interest in this work.

## References

- Zhang X, Zhang W, Cao W-D, Cheng G, Zhang Y-Q. Glioblastoma multiforme: molecular characterization and current treatment strategy (Review). *Exp Ther Med*. 2012;3(1):9–14.
- Preusser M, de Ribaupierre S, Wöhrer A, et al. Current concepts and management of glioblastoma. *Ann Neurol*. 2011;70(1):9–21.
- Verhaak RG, Hoadley KA, Purdom E, et al. Integrated genomic analysis identifies clinically relevant subtypes of glioblastoma characterized by abnormalities in PDGFRA, IDH1, EGFR, and NF1. *Cancer Cell*. 2010;17(1):98–110.
- Kim GC, Kim GJ, Park SR, et al. Air plasma coupled with antibody-conjugated nanoparticles: a new weapon against cancer. *J Phys D Appl Phys*. 2008;42(3):032005.
- Brigger I, Dubernet C, Couvreur P. Nanoparticles in cancer therapy and diagnosis. *Adv Drug Deliv Rev*. 2002;54(5):631–651.
- Farokhzad OC, Cheng J, Tepley BA, et al. Targeted nanoparticle-aptamer bioconjugates for cancer chemotherapy in vivo. *Proc Natl Acad Sci U S A*. 2006;103(16):6315–6320.
- Cho K, Wang X, Nie S, Chen ZG, Shin DM. Therapeutic nanoparticles for drug delivery in cancer. *Clin Cancer Res*. 2008;14(5):1310–1316.
- Zhu Y, Li J, Li W, et al. The biocompatibility of nanodiamonds and their application in drug delivery systems. *Theranostics*. 2012;2(3):302–312.
- Liu Z, Robinson JT, Sun X, Dai H. PEGylated nanographene oxide for delivery of water-insoluble cancer drugs. *J Am Chem Soc*. 2008;130(33):10876–10877.
- Stark W. Nanoparticles in biological systems. *Angew Chemie Int Ed*. 2011;50(6):1242–1258.
- Sasidharan A, Panchakarla LS, Chandran P, et al. Differential nanobio interactions and toxicity effects of pristine versus functionalized graphene. *Nanoscale*. 2011;3(6):2461–2464.
- Faklaris O, Joshi V, Irinopoulou T, et al. Photoluminescent diamond nanoparticles for cell labeling: study of the uptake mechanism in mammalian cells. *ACS Nano*. 2009;3(12):3955–3962.
- Novoselov KS, Geim AK, Morozov SV, et al. Electric field effect in atomically thin carbon films. *Science*. 2004;306(5696):666–669.
- Shen H, Zhang L, Liu M, Zhang Z. Biomedical applications of graphene. *Theranostics*. 2012;2(3):283–294.
- Park S, Ruoff RS. Chemical methods for the production of graphenes. *Nat Nanotechnol*. 2009;4(4):217–224.
- Hernandez Y, Nicolosi V, Lotya M, et al. High-yield production of graphene by liquid-phase exfoliation of graphite. *Nat Nanotechnol*. 2008;3(9):563–568.
- Akhavan O, Ghaderi E, Akhavan A. Size-dependent genotoxicity of graphene nanoplatelets in human stem cells. *Biomaterials*. 2012;33(32):8017–8025.
- Chang Y, Yang S-T, Liu J-H, et al. In vitro toxicity evaluation of graphene oxide on A549 cells. *Toxicol Lett*. 2011;200(3):201–210.
- Wang A, Pu K, Dong B, et al. Role of surface charge and oxidative stress in cytotoxicity and genotoxicity of graphene oxide towards human lung fibroblast cells. *J Appl Toxicol*. 2013;33(10):1156–1164.
- Jaworski S, Sawosz E, Chwalibog A, et al. In vitro evaluation of the effects of graphene platelets on glioblastoma multiforme cells. *Int J Nanomedicine*. 2013;8(1):413–420.
- Wierzbicki M, Sawosz E, Grodzik M, et al. Carbon nanoparticles downregulate expression of basic fibroblast growth factor in the heart during embryogenesis. *Int J Nanomedicine*. 2013;8:3427–3435.
- Li J, Zhu Y, Li W, Zhang X, Peng Y, Huang Q. Nanodiamonds as intracellular transporters of chemotherapeutic drug. *Biomaterials*. 2010;31(32):8410–8418.
- Kaur R, Badea I. Nanodiamonds as novel nanomaterials for biomedical applications: drug delivery and imaging systems. *Int J Nanomedicine*. 2013;8:203–220.
- Xing Y, Xiong W, Zhu L, Osawa E, Hussin S, Dai L. DNA damage in embryonic stem cells caused by nanodiamonds. *ACS Nano*. 2011;5(3):2376–2384.
- Danilenko VV. [Synthesizing and sintering of diamond by explosion]. Moscow: Energoatomizdat; 2003. Russian.
- Singh NP, McCoy MT, Tice RR, Schneider EL. A simple technique for quantitation of low levels of DNA damage in individual cells. *Exp Cell Res*. 1988;175(1):184–191.

27. Tice RR, Agurell E, Anderson D, et al. Single cell gel/comet assay: guidelines for in vitro and in vivo genetic toxicology testing. *Environ Mol Mutagen*. 2000;35(3):206–221.
28. Dhawan A, Bajpayee M, Pandey AK, Parmar D. *Protocol for the single cell gel electrophoresis/comet assay for rapid genotoxicity assessment*. Lucknow, India: Industrial Toxicology Research Centre; 2003:1–10. Available from: [http://www.cometassayindia.org/protocol for comet assay.pdf](http://www.cometassayindia.org/protocol%20for%20comet%20assay.pdf). Accessed December 21, 2013.
29. Końca K, Lankoff A, Banasik A, et al. A cross-platform public domain PC image-analysis program for the comet assay. *Mutat Res*. 2003; 534(1–2):15–20.
30. Liu K-K, Wang C-C, Cheng C-L, Chao J-I. Endocytic carboxylated nanodiamond for the labeling and tracking of cell division and differentiation in cancer and stem cells. *Biomaterials*. 2009;30(26): 4249–4259.
31. Akhavan O, Ghaderi E, Emamy H, Akhavan F. Genotoxicity of graphene nanoribbons in human mesenchymal stem cells. *Carbon N Y*. 2013;54: 419–431.
32. Li Y, Liu Y, Fu Y, et al. The triggering of apoptosis in macrophages by pristine graphene through the MAPK and TGF-beta signaling pathways. *Biomaterials*. 2012;33(2):402–411.
33. Wu S, Zhao X, Cui Z, et al. Cytotoxicity of graphene oxide and graphene oxide loaded with doxorubicin on human multiple myeloma cells. *Int J Nanomedicine*. 2014;9(1):1413–1421.
34. Mu Q, Su G, Li L, et al. Size-dependent cell uptake of protein-coated graphene oxide nanosheets. *ACS Appl Mater Interfaces*. 2012;4(4): 2259–2266.
35. Yue H, Wei W, Yue Z, et al. The role of the lateral dimension of graphene oxide in the regulation of cellular responses. *Biomaterials*. 2012; 33(16):4013–4021.

### International Journal of Nanomedicine

### Publish your work in this journal

The International Journal of Nanomedicine is an international, peer-reviewed journal focusing on the application of nanotechnology in diagnostics, therapeutics, and drug delivery systems throughout the biomedical field. This journal is indexed on PubMed Central, MedLine, CAS, SciSearch®, Current Contents®/Clinical Medicine,

Submit your manuscript here: <http://www.dovepress.com/international-journal-of-nanomedicine-journal>

Dovepress

Journal Citation Reports/Science Edition, EMBase, Scopus and the Elsevier Bibliographic databases. The manuscript management system is completely online and includes a very quick and fair peer-review system, which is all easy to use. Visit <http://www.dovepress.com/testimonials.php> to read real quotes from published authors.