

# Tissue distribution and excretion kinetics of orally administered silica nanoparticles in rats

Jeong-A Lee<sup>1</sup>  
Mi-Kyung Kim<sup>1</sup>  
Hee-Jeong Paek<sup>1</sup>  
Yu-Ri Kim<sup>2</sup>  
Meyoung-Kon Kim<sup>2</sup>  
Jong-Kwon Lee<sup>3</sup>  
Jayoung Jeong<sup>3</sup>  
Soo-Jin Choi<sup>1</sup>

<sup>1</sup>Department of Food Science and Technology, Seoul Women's University, Seoul, Republic of Korea;

<sup>2</sup>Department of Biochemistry and Molecular Biology, Korea University Medical School and College, Seoul, Republic of Korea; <sup>3</sup>Toxicological Research Division, National Institute of Food and Drug Safety Evaluation, Chungchungbuk-do, Republic of Korea

**Purpose:** The effects of particle size on the tissue distribution and excretion kinetics of silica nanoparticles and their biological fates were investigated following a single oral administration to male and female rats.

**Methods:** Silica nanoparticles of two different sizes (20 nm and 100 nm) were orally administered to male and female rats, respectively. Tissue distribution kinetics, excretion profiles, and fates in tissues were analyzed using elemental analysis and transmission electron microscopy.

**Results:** The differently sized silica nanoparticles mainly distributed to kidneys and liver for 3 days post-administration and, to some extent, to lungs and spleen for 2 days post-administration, regardless of particle size or sex. Transmission electron microscopy and energy dispersive spectroscopy studies in tissues demonstrated almost intact particles in liver, but partially decomposed particles with an irregular morphology were found in kidneys, especially in rats that had been administered 20 nm nanoparticles. Size-dependent excretion kinetics were apparent and the smaller 20 nm particles were found to be more rapidly eliminated than the larger 100 nm particles. Elimination profiles showed 7%–8% of silica nanoparticles were excreted via urine, but most nanoparticles were excreted via feces, regardless of particle size or sex.

**Conclusion:** The kidneys, liver, lungs, and spleen were found to be the target organs of orally-administered silica nanoparticles in rats, and this organ distribution was not affected by particle size or animal sex. In vivo, silica nanoparticles were found to retain their particulate form, although more decomposition was observed in kidneys, especially for 20 nm particles. Urinary and fecal excretion pathways were determined to play roles in the elimination of silica nanoparticles, but 20 nm particles were secreted more rapidly, presumably because they are more easily decomposed. These findings will be of interest to those seeking to predict potential toxicological effects of silica nanoparticles on target organs.

**Keywords:** biological fate, size effect, target organ

## Introduction

Silica nanoparticles have attracted much attention for industrial and biomedical applications, such as for use as additives and in printer toners, varnishes, pharmaceuticals, cosmetics, and coating materials.<sup>1,2</sup> These wide-ranging applications stem from the properties of silica nanoparticles, which include easy synthesis, low toxicity, hydrophilicity, and the ease with which their surfaces can be modified or functionalized.<sup>3–5</sup> Hence, silica nanoparticles have been extensively developed for biological purposes for use as biomarkers, biosensors, DNA or drug delivery, and cancer therapy.<sup>6–10</sup>

In this context, many studies have recently focused on biological effects of silica nanoparticles at different levels, such as on their cytotoxicities, blood compatibilities,

Correspondence: Soo-Jin Choi  
Department of Food Science and Technology, Seoul Women's University,  
621 Hwarang-ro, Nowon-gu,  
Seoul 139-774, Republic of Korea  
Tel +82 2 970 5634  
Fax +82 2 970 5977  
Email sjchoi@swu.ac.kr

acute and repeat dose toxicities, and biokinetics,<sup>11–19</sup> which are currently hot issues in the nanotoxicology field. However, the kinetic behaviors of silica nanoparticles at the systemic level, including their pharmacokinetics, tissue distributions, and clearances, remain unclear. *In vivo* biokinetic studies can be conducted by systematic and quantitative analyses of plasma, tissues, urine or feces, and other biological samples in whole animals after exposure to assess absorption, distribution, metabolism, and excretion. An understanding of the kinetic behaviors of silica nanoparticles is of importance in the context of determining absorption amounts, target organs, and residence times, which are essential for the prediction of potential adverse effects in the short- and long-term. Some researchers have recently described the biodistribution and excretion kinetics of silica nanoparticles.<sup>20–25</sup> However, most of this information was obtained after intravenous injection, which introduces nanoparticles directly into the circulatory system. In practice, oral administration is important, for example, in food or water, and results in kinetic behaviors unlike those associated after intravenous injection because nanoparticles must encounter stomach acid and cross the epithelium of the gastrointestinal (GI) tract in order to reach the blood circulation. In addition, even after GI transit, nanoparticles are carried to the liver via the portal vein before entering the systemic circulation and, thus, are subject to metabolic processes that evidently reduce bioavailability.

The biokinetics of silica nanoparticles at the systemic level has been less extensively explored than other inorganic nanoparticles, which appears to be due to the difficulty of detecting silica nanoparticles in biological matrices.<sup>20</sup> The major approaches used to trace and determine their kinetics *in vivo* are based on the use of dye-conjugated or dye-embedded particles and subsequent fluorescence detection by microscopy or some other imaging modality.<sup>20,23,24</sup> However, this strategy is limited with respect to the interpretation of results as dye-conjugated particles are structurally modified and, thus, molecular weights and surface charges are changed. These changes could affect biological interactions at the systemic level and could eventually modify kinetic behaviors. Furthermore, the stabilities of dye-conjugated or dye-embedded particles in whole animals are also necessary considerations that complicate the interpretations of quantitative analyses. In our previous study, we devised a quantitative analytical method for measuring the amounts of silica nanoparticles in biological matrices based on a lithium borate fusion technique with a molybdenum blue spectrophotometric method.<sup>26</sup> In the present study, we evaluated the tissue distributions and elimination kinetics of 20 nm and

100 nm silica nanoparticles after administering a single oral dose to male and female rats. In addition, the biological fates of the silica nanoparticles in target organs were determined by transmission electron microscopy (TEM).

## Materials and methods

### Preparation and characterization of nanoparticles

Colloidal silica nanoparticles (20 nm and 100 nm, dispersed in distilled water [DW]) were purchased from E and B Nanotech Co, Ltd. (Gyeonggi-do, Republic of Korea) and analyzed by TEM (JEM-1010; JEOL, Tokyo, Japan). The surface charges (zeta potentials) of nanoparticles were determined using a zeta potentiometer (Zetasizer Nano ZS system; Malvern Instruments, Malvern, UK).

### Animals

Five-week-old male and female Sprague Dawley rats weighing 120–140 g were purchased from G-Bio (Seoul, Republic of Korea). The animals were housed in plastic lab animal cages in a ventilated room, which was maintained at 20°C±2°C and 60%±10% relative humidity under a 12-hour light/dark cycle. Water and commercial laboratory complete food were provided *ad libitum*. Animals were acclimated to this environment for 7 days before treatment. All animal experiments were performed in compliance with the guidelines issued by the Animal and Ethics Review Committee of Seoul Women's University.

### Dosing and sample collection

Four groups of male and of female rats (n=6 per group) were administered a single dose of 500 or 1,000 mg/kg of nanoparticles (20 nm and 100 nm) by oral gavage. In addition, six rats were administered an equivalent volume of DW as controls. Body weights, behavioral changes, and other symptoms were carefully recorded daily after treatment.

For the tissue distribution study, samples of brain, heart, kidneys, liver, lungs, spleen, and testes or ovaries were collected at 1 and 6 hours, and 1, 2, 3, and 7 days post-administration after CO<sub>2</sub>-induced euthanasia.

To evaluate excretion profiles, urine and feces were collected at 10 hours, and 1, 2, 3, 4, 5, 6, 7, 8, 9, and 10 days post-administration.

### Quantitative analysis of silicon

Silicon (Si) analysis in biological samples was performed as previously described.<sup>26</sup> Briefly, a 100 mg sample was placed in a graphite crucible and 200 mg of lithium metaborate

(LiBO<sub>2</sub>; Sigma-Aldrich, St Louis, MO, USA) was added. After mixing, the crucible was heated in a furnace for 25 minutes at 1,025°C, and then 2 mL of distilled deionized water (DDW), 2 mL of nitric acid (HNO<sub>3</sub>; 70%), 2 mL scandium oxide solution (250 µg/mL), and one drop of hydrogen peroxide (H<sub>2</sub>O<sub>2</sub>) were added. This mixture was then heated on a hot plate until the ash had been completely dissolved. The remaining solution was then removed by heating, and 5 mL of DDW was added. For Si quantification by the molybdenum blue method, 2 to 3 drops of hydrofluoric acid (48%) were added to 1 mL of this solution, and 5 mL of ammonium molybdate solution (65 g/L) and 4 mL of hydrogen chloride (HCl; 3.7%) were added. After adding 20 mL of DDW, the mixture was left to stand for 30 minutes, and 2 mL of oxalic acid, 2 mL of sodium sulfite solution (150 g/L), and 5 mL of sulfuric acid were added. The mixture was then left to stand for 3 minutes. Finally, 1 mL of stannous chloride solution (SnCl<sub>2</sub> 50 g in 100 mL of HCl and 50 mL of DDW) was added and absorbance was measured at 820 nm (SMP500-16509-SICX; Molecular Devices LLC, Sunnyvale, CA, USA).

Quantitative analysis was carried out by external four-point-calibration with internal standard correction using spiking experiments.

## TEM study

Representative organs, such as livers and kidneys, were collected from three silica nanoparticle (1,000 mg/kg)-administered male rats 48 hours post-administration. One group of three rats was administered DW as a control. Samples were fixed using modified Karnovsky's fixative (2% paraformaldehyde and 2% glutaraldehyde in 0.05 M sodium cacodylate buffer [pH 7.2]), postfixed with 1:1 solution of 2% osmium tetroxide and 0.1 M sodium cacodylate for 2 hours at 4°C, and then stained with uranyl acetate. Samples were then dehydrated with ethanol and blocks were prepared using Spurr's resin. Blocks were sectioned using an ultramicrotome (MT-X; Boeckeler Instruments, Inc., Tucson, AZ, USA) and, after coating with high purity carbon rod (Ted Pella, Inc., Redding, CA, USA), TEM images were obtained using a Tecnai G2 unit, equipped with an energy dispersive spectroscopy (EDS) facility, at the Korea Basic Science Institute (KBSI; Gwangju Branch, Republic of Korea).

## Statistical analysis

The data are presented as means ± standard deviations. For statistical analysis, experimental values were compared with corresponding control values. One-way analysis of variance in SAS software (Tukey's Test, Version 11.0; SAS Institute Inc., Cary, NC, USA) was used to determine the significances

of differences between experimental groups and controls. Statistical significance was accepted for *P*-values of <0.05.

## Results

### Characterization of silica nanoparticles

Colloidal silica nanoparticles of 20 nm and 100 nm were characterized by TEM and by measuring zeta potentials (Table 1). As previously reported,<sup>26</sup> the average particle sizes of these silica nanoparticles were 15±3 nm and 89±14 nm, respectively, and both had a spherical morphology and were negatively charged in DW at pH 7.0.

### Effects of silica nanoparticles on body weights and symptoms

Survival rates, body weights, behaviors, and symptoms were carefully observed for 14 days post-administration. Male and female rats that were administered the two differently sized silica nanoparticles up to 1,000 mg/kg showed no body weight loss, abnormal behaviors, or symptoms as compared with untreated controls (Figure 1). No significant difference in body weights was found between treated and control animals.

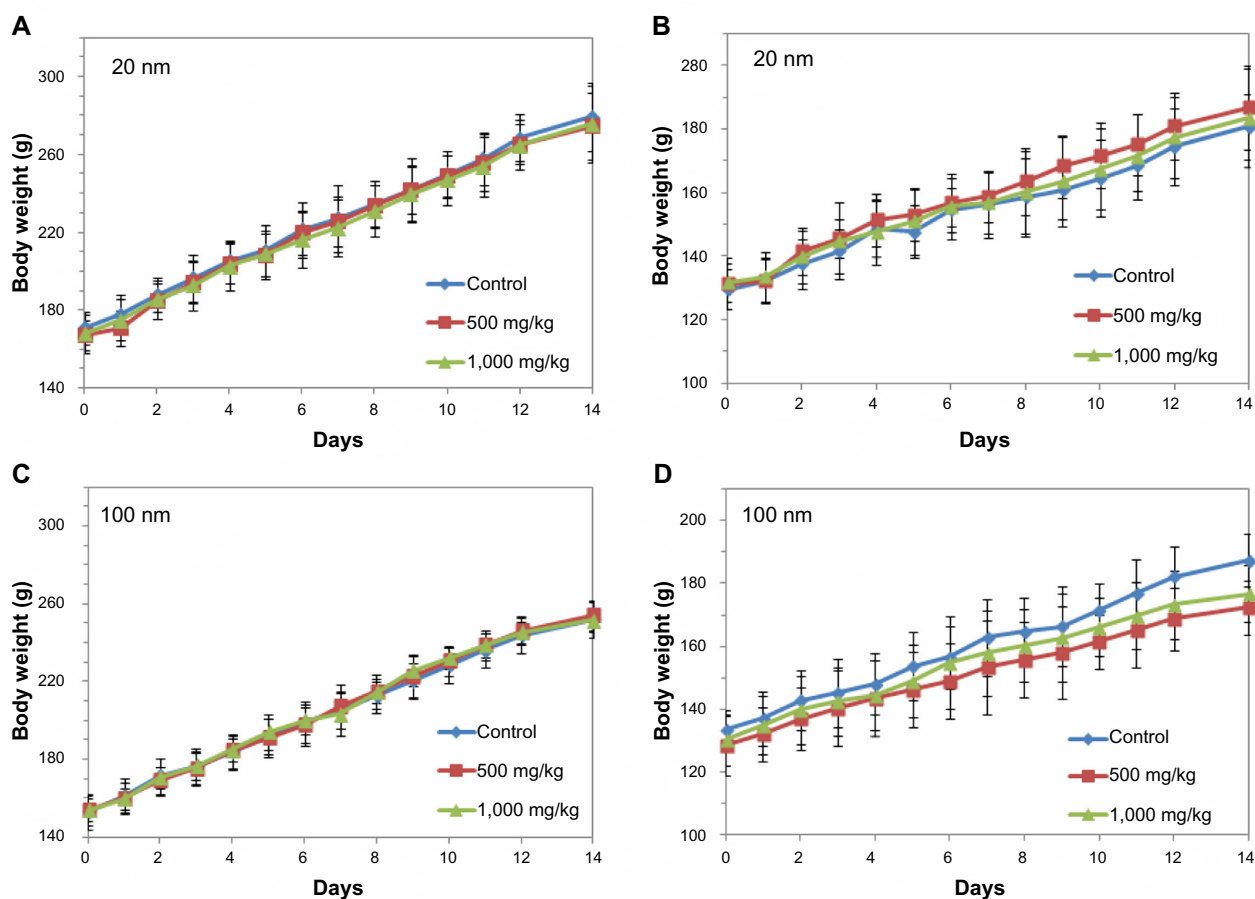
### Tissue distribution

The biodistribution of silica nanoparticles was examined in brain, kidneys, liver, lungs, spleen, and ovaries/testes. Total Si concentrations in tissues were analyzed, as described above, by determining increases in total Si levels in silica-administered rats versus untreated controls. Si levels were found to be significantly higher in kidneys, liver, lungs, and spleen of treated rats regardless of dose, particle size, or sex (Figure 2). Notably, high Si concentrations were found in kidneys and livers at 6 hours to 3 days post-administration, whereas elevated Si levels were detected at 6 hours to 2 days in lungs and spleens. Silica nanoparticles did not accumulate significantly in brains, ovaries, or testes. Furthermore, tissue distributions were similar regardless of particle size or sex. The increases in Si concentrations that were found are summarized in Table 2. Increases in Si concentrations in the GI tract (esophagus, stomach, and intestine) were not detected at 7 days post-administration.

**Table 1** Particle sizes and zeta potentials of silica nanoparticles

	Measured particle size (nm) <sup>a</sup>	Zeta potential (mV) <sup>b</sup>
20 nm	15±3	-60±7
100 nm	89±14	-76±3

**Notes:** <sup>a</sup>Average particle size was measured by randomly selecting 200 particles in TEM images; <sup>b</sup>zeta potentials were measured in distilled water (pH 7.0).



**Figure 1** Body weight gains of male and female rats administered 20 nm or 100 nm silica nanoparticles.

**Notes:** (A) Male rats administered 20 nm silica nanoparticles. (B) Female rats administered 20 nm silica nanoparticles. (C) Male rats administered 100 nm silica nanoparticles. (D) Female rats administered 100 nm silica nanoparticles. No significant difference was observed versus untreated controls.

## In vivo fate of silica nanoparticles in tissues

TEM analysis of organs from silica-administered rats was carried out to confirm tissue distributions and to determine the biological fates of nanoparticles in target tissues. As shown in Figure 3, silica nanoparticles of both 20 nm and 100 nm were observed in liver, and these had the same spherical morphology and particle sizes observed prior to administration (Table 1). In particular, differently sized silica nanoparticles were localized in hepatocytes as well as in nuclei. On the other hand, irregular particle shapes were observed in kidneys, and more so in rats treated with 20 nm silica nanoparticles. TEM-EDS confirmed the presence of Si in the particulate forms in livers and kidneys.

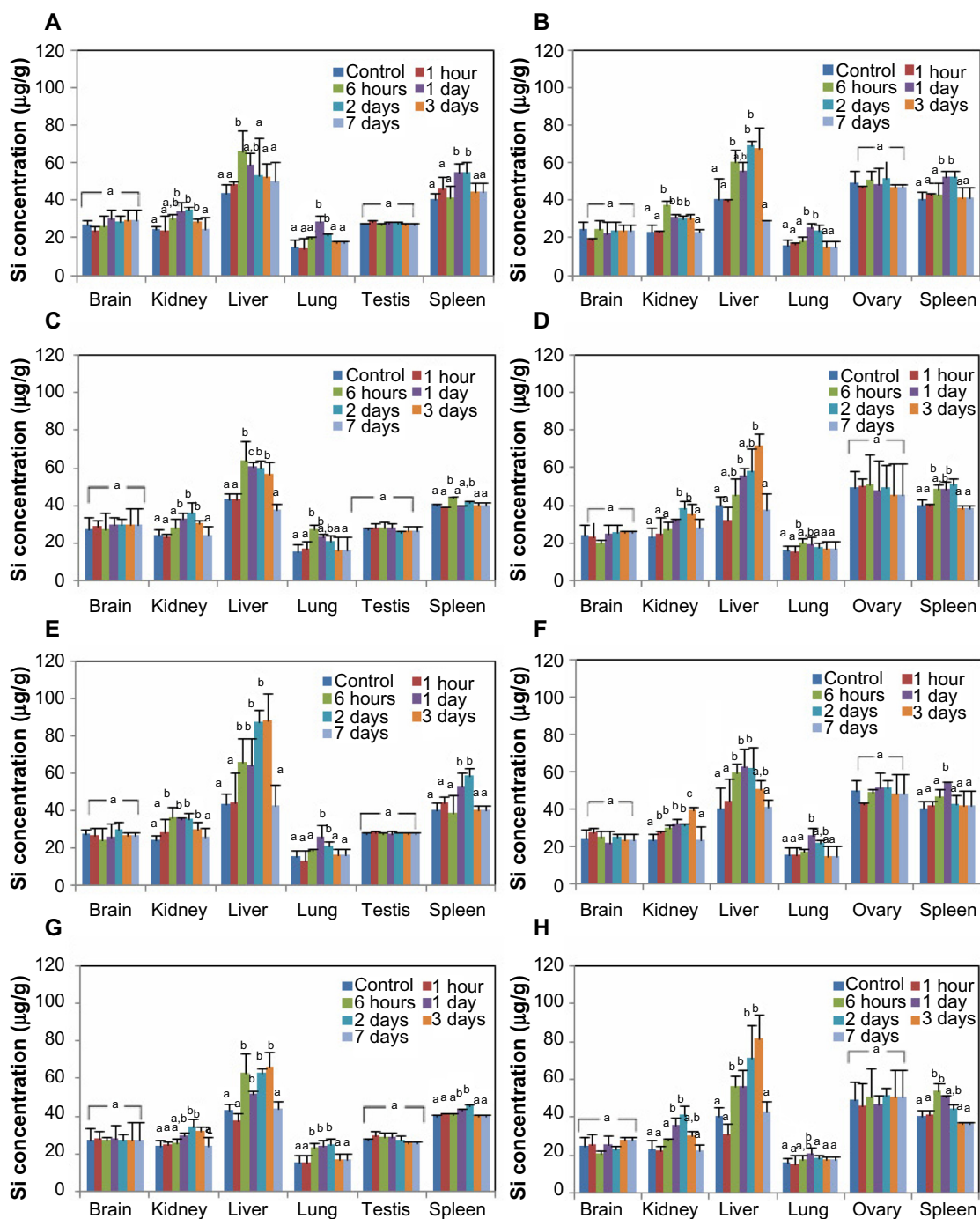
## Excretion

The excretion kinetics of silica nanoparticles was evaluated by measuring increases in Si levels in urine and feces. Significantly, higher Si concentrations in urine were detected, regardless of sex, at 1–2 days and 1–5 days after administering

20 nm silica nanoparticles at 500 or 1,000 mg/kg, respectively (Figure 4). However, elimination in urine was slower after the administration of 100 nm particles, which produced elevated Si levels at 1–3 days and 1–6 days at doses of 500 and 1,000 mg/kg, respectively. A similar tendency was found for fecal excretion profiles; Si concentrations were elevated at 1–3 days and at 1–4 days after the administration of 20 nm and 100 nm nanoparticles, respectively, at doses of 500 and 1,000 mg/kg, showing size-dependent elimination kinetics. It is worth noting that much higher Si levels were detected in feces than in urine. Table 3 summarizes the total excretion values of differently sized silica nanoparticles. We estimate that 7%–8% of nanoparticles were excreted in urine and 75%–80% via feces. Particle size and sex were not found to influence excretion values.

## Discussion

The tissue distribution, excretion, and in vivo fates of colloidal silica nanoparticles (20 nm and 100 nm) were investigated after a single oral administration in male



**Figure 2** Tissue distributions of silica nanoparticles in rats after a single oral administration.

**Notes:** (A) Oral administration of 500 mg/kg of 20 nm nanoparticles in males. (B) Oral administration of 500 mg/kg of 20 nm nanoparticles in females. (C) Oral administration of 500 mg/kg of 100 nm in males. (D) Oral administration of 500 mg/kg of 100 nm in females. (E) Oral administration of 1,000 mg/kg of 20 nm nanoparticles in males. (F) Oral administration of 1,000 mg/kg of 20 nm nanoparticles in females. (G) Oral administration of 1,000 mg/kg of 100 nm in males. (H) Oral administration of 1,000 mg/kg of 100 nm in females. There are statistically significant differences between columns labeled (a) and columns labeled (b) ( $P < 0.05$ ).

**Abbreviation:** Si, silicon.

and female rats. Particle sizes of 20 nm and 100 nm were examined, because the sizes of most of the nanoparticles developed fall in the range 1–100 nm, and because these sizes varied enough to evaluate the effect of particle size on biokinetics.

After a single-dose administration of silica nanoparticles, survival rates and body weight gains were unaffected at dosages of up to 1,000 mg/kg. Furthermore, no abnormal behaviors or symptoms, such as a decrease in food or water intake, diarrhea, loss of movement, or changes in pupil size or eye

**Table 2** Tissue distributions of differently sized silica nanoparticles in rats after a single oral administration

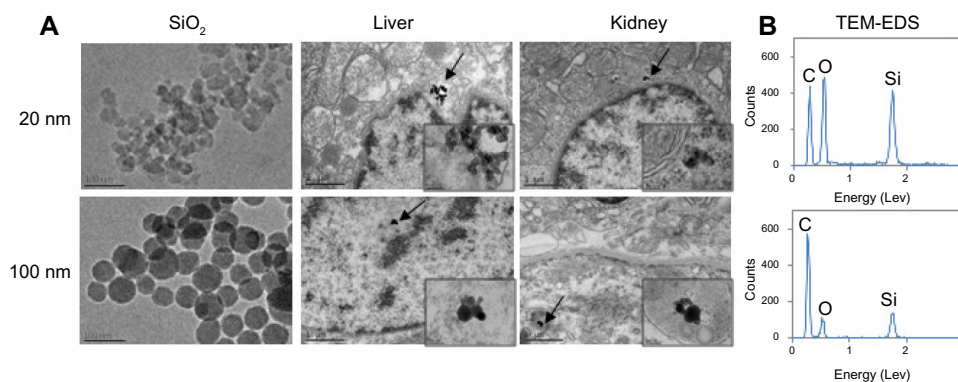
	Control		500 mg/kg				1,000 mg/kg			
	Male	Female	20 nm		100 nm		20 nm		100 nm	
			Male	Female	Male	Female	Male	Female	Male	Female
Brain ( $\mu\text{g/g}$ )	104 $\pm$ 7	103 $\pm$ 8	109 $\pm$ 3	105 $\pm$ 16	104 $\pm$ 10	97 $\pm$ 3	107 $\pm$ 10	93 $\pm$ 14	107 $\pm$ 8	100 $\pm$ 9
Kidneys ( $\mu\text{g/g}$ )	90 $\pm$ 7	80 $\pm$ 11	144 $\pm$ 6*	131 $\pm$ 9*	132 $\pm$ 18*	132 $\pm$ 21*	160 $\pm$ 23*	140 $\pm$ 15*	139 $\pm$ 7*	135 $\pm$ 18*
Liver ( $\mu\text{g/g}$ )	175 $\pm$ 14	173 $\pm$ 15	261 $\pm$ 13*	231 $\pm$ 14*	251 $\pm$ 31*	235 $\pm$ 13*	273 $\pm$ 43*	249 $\pm$ 18*	255 $\pm$ 38*	256 $\pm$ 10*
Lungs ( $\mu\text{g/g}$ )	59 $\pm$ 6	59 $\pm$ 5	72 $\pm$ 5*	69 $\pm$ 8*	82 $\pm$ 6*	76 $\pm$ 6*	78 $\pm$ 10*	76 $\pm$ 3*	84 $\pm$ 7*	77 $\pm$ 8*
Spleen ( $\mu\text{g/g}$ )	144 $\pm$ 17	144 $\pm$ 17	198 $\pm$ 13*	189 $\pm$ 11*	193 $\pm$ 20*	192 $\pm$ 22*	218 $\pm$ 17*	202 $\pm$ 25*	200 $\pm$ 22*	197 $\pm$ 26*
Ovary/testis ( $\mu\text{g/g}$ )	115 $\pm$ 14	160 $\pm$ 16	104 $\pm$ 14	162 $\pm$ 22	112 $\pm$ 6	160 $\pm$ 11	103 $\pm$ 17	158 $\pm$ 23	120 $\pm$ 10	169 $\pm$ 19
Total ( $\mu\text{g/g}$ )	688 $\pm$ 65	720 $\pm$ 72	885 $\pm$ 51*	890 $\pm$ 77*	873 $\pm$ 99*	892 $\pm$ 78*	939 $\pm$ 19*	919 $\pm$ 98*	904 $\pm$ 92*	933 $\pm$ 90*

**Note:** \*Significantly different from the control group ( $P < 0.05$ ).

pigmentation, were observed during the 14 days post-administration. These results suggest that orally administered silica nanoparticles do not exhibit acute toxicity. Furthermore, the same results were obtained for different particle sizes in male and female rats. Low toxicity of silica nanoparticles following oral administration was also recently reported by Fu et al;<sup>27</sup> 110 nm mesoporous silica nanoparticles caused no immediate toxicity, such as loss of appetite, loss of weight, death, or passive behaviors, in mice after oral administration of 5,000 mg/kg. Ivanov et al demonstrated that intravenously injected silica nanoparticles (13 nm, 7 mg/kg) are relatively biocompatible nanomaterials when considering acute toxicity.<sup>28</sup> It seems that silica nanoparticles do not exhibit acute toxicity at the dosages used in this study, although more extended study is needed to confirm their toxicity, for example, by biochemical analysis and histopathological examination.

Our previous study showed that plasma concentration-time curves for single oral doses of silica nanoparticles (20 nm and 100 nm) at 500 and 1,000 mg/kg rapidly decreased within 4 hours and 10 hours, respectively, in a dose-dependent manner, after oral administration to rats,

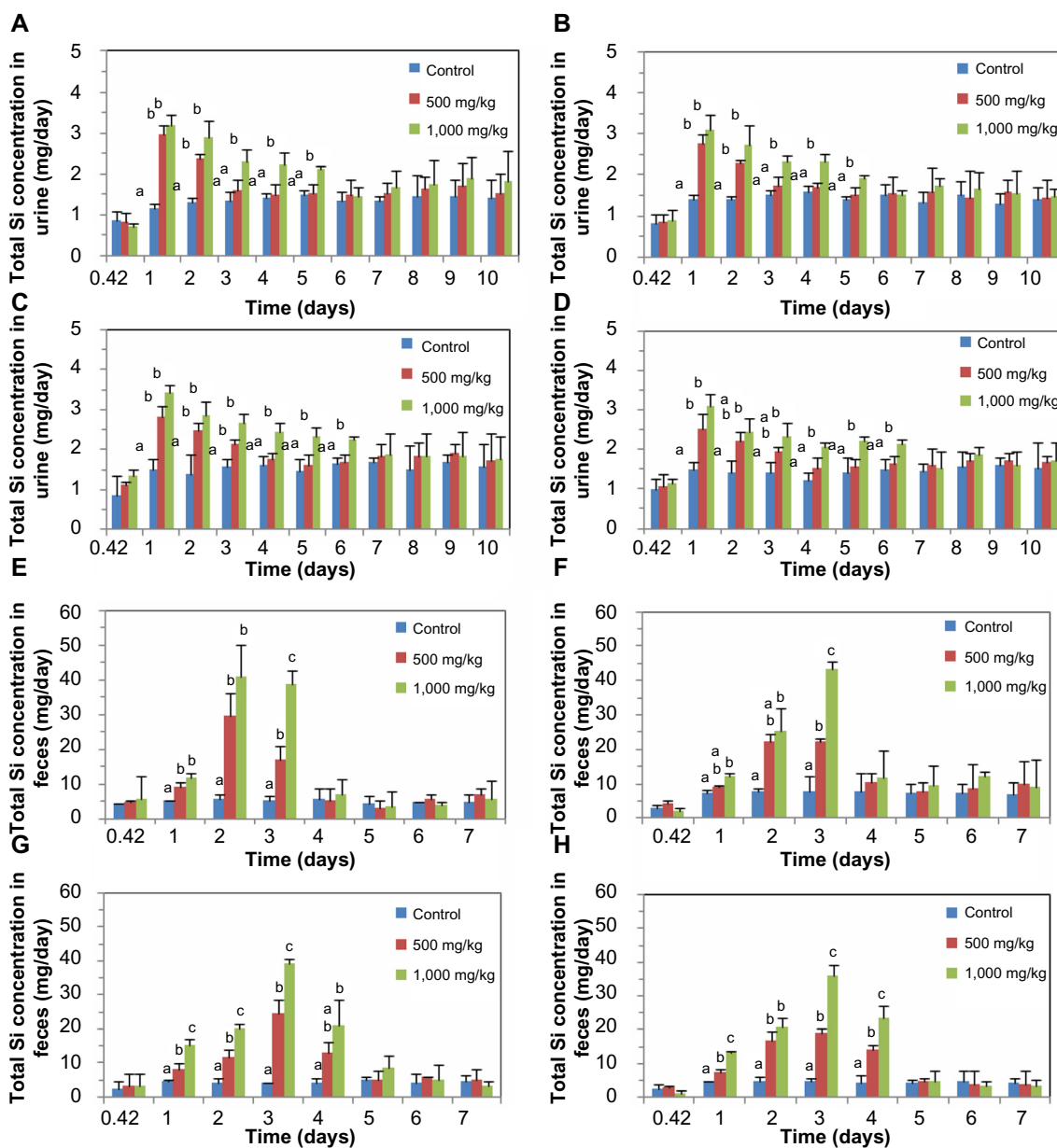
regardless of particle size or sex.<sup>26</sup> Absorption amount was determined to be low, ranging from 6.6%–9.7%, without being affected by particle size or sex.<sup>26</sup> In our biodistribution study, significantly elevated Si concentrations were detected in kidneys, liver, lungs, and spleens within 3 days, but returned to normal level after 7 days. When tissue distribution kinetics was compared, nanoparticles were found to persist longer in kidneys and liver than in lungs and spleen (3 days versus 1–2 days), and tissue distribution patterns were not dependent on particle size or sex. Furthermore, the fact that silica nanoparticles were found in liver, lungs, and spleen also indicates that the nanoparticles were sequestered into organs by the mononuclear phagocytic system, also known as the reticuloendothelial system (RES), which implies phagocytosis is involved in their uptake. Increased Si levels in kidneys can be closely related to the excretion pathway of the silica nanoparticles in urine. Most biodistribution studies on silica nanoparticles have been conducted by administering a single intravenous injection. He et al<sup>23</sup> reported the accumulation of spherical mesoporous silica nanoparticles (80–360 nm) labeled with fluorescein isothiocyanate in liver and spleen



**Figure 3** TEM images of silica nanoparticles before administration and liver and kidney tissues collected at 48 hours after the oral administration of 20 nm or 100 nm sized nanoparticles.

**Notes:** (A) Higher magnification of the tissues where nanoparticles are present, indicated by arrow. (B) TEM-EDS images show the presence of Si in the particulate forms in the tissues.

**Abbreviations:** EDS, energy dispersive spectroscopy; Si, silicon; SiO<sub>2</sub>, silica; TEM, transmission electron microscopy.



**Figure 4** Excretion kinetics of silica nanoparticles.

**Notes:** (A) Excretion of 20 nm silica nanoparticles via urine in males. (B) Excretion of 20 nm silica nanoparticles via urine in females. (C) Excretion of 100 nm silica nanoparticles via urine in males. (D) Excretion of 100 nm silica nanoparticles via urine in females. (E) Excretion of 20 nm silica nanoparticles via feces in males. (F) Excretion of 20 nm silica nanoparticles via feces in females. (G) Excretion of 100 nm silica nanoparticles via feces in males. (H) Excretion of 100 nm silica nanoparticles via feces in females. There are statistically significant differences between columns labeled (a), columns labeled (b), and columns labeled (c) ( $P < 0.05$ ).

**Abbreviation:** Si, silicon.

**Table 3** Urine and fecal excretion values of differently sized silica nanoparticles in rats after a single oral administration

	500 mg/kg				1,000 mg/kg			
	20 nm		100 nm		20 nm		100 nm	
	Male	Female	Male	Female	Male	Female	Male	Female
Excretion via urine (%)	7.65±0.88	7.43±0.53	7.62±0.84	7.56±0.35	6.73±0.55	7.09±0.50	7.11±0.69	7.16±0.59
Excretion amount via urine (mg)	4.19±0.48	3.53±0.25	4.17±0.46	3.59±0.17	7.39±0.60	6.73±0.47	7.79±0.76	6.79±0.56
Excretion via feces (%)	77.25±6.50	79.09±6.16	78.52±5.34	79.52±5.99	74.60±7.38	75.74±10.27	75.08±5.18	76.54±8.99
Excretion amount via feces (mg)	42.29±3.56	37.53±2.92	42.99±2.92	37.73±2.84	81.68±8.08	71.88±9.75	82.21±5.67	71.62±8.98

**Note:** No significant differences were observed between animals administered the same doses.

and to a lesser extent in lungs, kidneys, and heart in rats for 5 days post-injection. He et al<sup>20</sup> demonstrated a similar distribution pattern for 45 nm silica nanoparticles using an *in vivo* fluorescence imaging system. Borak et al reported that 150 nm silica nanoparticles accumulated primarily in the lungs and kidneys, and less so in hearts and liver at 4 days post-injection.<sup>29</sup> Huang et al reported that mesoporous silica nanoparticles with different aspect ratios mainly accumulated in the RES of liver, spleen, and lungs, and slightly in kidneys for 7 days in mice (>80%).<sup>22</sup> Cho et al reported the accumulation of fluorescence dye-labeled silica nanoparticles of 50 nm, 100 nm, or 200 nm in liver, spleen, and kidneys at 24 hours post-injection, and their persistence in liver and spleen at 4 weeks in mice.<sup>24</sup> On the other hand, Malfatti et al investigated the long-term biodistribution of carbon-14-labeled silica nanoparticles of 33 nm in mice, and demonstrated their persistence in the RES of liver, spleen, and lungs over 56 days following injection.<sup>25</sup> Taking our result and those of others into account, it appears that the liver, spleen, lungs, and kidneys are targeted by silica nanoparticles regardless of animal, silica type, or exposure routes.

However, no report has demonstrated the *in vivo* biological fate of silica nanoparticles. In the present study, TEM images confirmed the presence of silica nanoparticles in target tissues. Interestingly, clear intact spherical silica particles with almost the pre-administered particle size (Table 1 and Figure 3) were found in livers treated with 20 nm and 100 nm nanoparticles. The intracellular localization of nanoparticles was determined to be hepatocytes as well as nuclei regardless of particle size. It was reported that silica nanoparticles are internalized into cells, localized throughout cellular compartments, and subsequently penetrate into the cell nucleus.<sup>30,31</sup> Thus, the toxicity of silica nanoparticles in terms of inhibition of gene expression has to be considered. Nanoparticles with an irregular (decomposed) morphology were observed in kidneys, especially when 20 nm particles were administered. The presence of Si in the particulate forms was also confirmed by TEM-EDS. This result strongly suggests that silica nanoparticles were sequestered into liver in their intact particulate forms, but slowly decomposed or dissolved in kidneys.

The excretion kinetics study showed that nanoparticles can be eliminated by urinary excretion over 2 and 5 days following the administration of 500 mg/kg and 1,000 mg/kg 20 nm particles, respectively, whereas slower excretion profiles (over 3 and 6 days) were observed for 100 nm particles. This result implies that smaller silica nanoparticles are more rapidly eliminated from the body, possibly due to their greater

decomposition rates in the kidneys (Figure 3). Furthermore, molecules with a hydrodynamic diameter of <6 nm can pass through the glomerular membrane,<sup>32</sup> thus, the presence of silica nanoparticles in kidneys and urine suggests that the nanoparticles are biodegraded prior to urinary excretion. It was reported that silica nanoparticles undergo gradual biodegradation both *in vitro* and *in vivo*, resulting in the formation of silicic acid (ortho-, meta-, di-, and trisilicates) by hydrolysis.<sup>33,34</sup> Predominant excretion forms of silica nanoparticles in urine are known to be silicic acid or oligomeric silica species.<sup>35,36</sup> Thus, sodium or potassium silicic acid salts could be excreted from the organs with the urine. Furthermore, it seems that absorbed nanoparticles (about 6.6%–9.7%) are excreted by the urinary system. However, the majority of nanoparticles (about 75%–80%) were directly excreted via feces, regardless of particle size or sex (Table 3). This finding suggests that fecal and biliary excretion routes play major roles in the elimination of silica nanoparticles. In the present study, it was likely that 10%–15% of administered nanoparticles remain in body tissues. Several studies have demonstrated the urinary excretion of silica nanoparticles, but after intravenous injection. In one study, *in vivo* fluorescence imaging system in mice showed that 45 nm silica nanoparticles were eliminated via the renal route.<sup>20</sup> In another study, the urinary excretion of mesoporous silica nanoparticles (80–360 nm) was followed using a real-time *in vivo* imaging system,<sup>23</sup> and, in another, 36% of 150 nm silica particles were reported to be excreted over 4 days in urine.<sup>29</sup> However, the fecal excretion route was not examined in these studies. Huang et al and Cho et al investigated both the fecal and urinary excretions of silica nanoparticles in mice,<sup>22,24</sup> but they did not calculate the amounts of silica particles excreted via urine and feces. Based on our findings and previous results in the literature, both renal and fecal routes are involved in the elimination of silica nanoparticles.

## Conclusion

The effects of particle size (20 nm and 100 nm) on the tissue distribution and excretion of colloidal silica nanoparticles were investigated following a single oral administration to male and female rats. Nanoparticles were found to target the kidneys, liver, lungs, and spleen regardless of particle size or sex. The primary biological fate of silica nanoparticles was found to be in particulate form in tissues. Specifically, intact particulates were found in liver, but decomposed morphologies of particulates were observed in kidneys, suggesting possible nanoparticle degradation *in vivo*. Urinary



and fecal excretion kinetics were found to be size-dependent, and 20 nm nanoparticles were eliminated faster than 100 nm nanoparticles, possibly due to the more rapid decomposition of 20 nm nanoparticles. These findings will be of interest to researchers seeking to predict the potential toxicological effects of silica nanoparticles on target organs.

## Acknowledgments

This research was supported by a grant (10182MFDS991) from the Ministry of Food and Drug Safety in 2011, and partly by the Basic Science Research Program through the National Research Foundation of Korea (NRF), funded by the Ministry of Education, Science and Technology (2013R1A1A3009283).

## Disclosure

The author reports no conflicts of interest in this work.

## References

- Douroumis D, Onyesom I, Maniruzzaman M, Mitchell J. Mesoporous silica nanoparticles in nanotechnology. *Crit Rev Biotechnol*. 2013;33(3): 229–245.
- Lin W, Huang YW, Zhou XD, Ma Y. In vitro toxicity of silica nanoparticles in human lung cancer cells. *Toxicol Appl Pharmacol*. 2006;217(3):252–259.
- Yang P, Gai S, Lin J. Functionalized mesoporous silica materials for controlled drug delivery. *Chem Soc Rev*. 2012;41(9):3679–3698.
- Fang IJ, Trewyn BG. Application of mesoporous silica nanoparticles in intracellular delivery of molecules and proteins. *Methods Enzymol*. 2012;508:41–59.
- Wei H, Zhou L, Li J, Liu J, Wang E. Electrochemical and electrochemiluminescence study of Ru(bpy)<sub>3</sub><sup>2+</sup>-doped silica nanoparticles with covalently grafted biomacromolecules. *J Colloid Interface Sci*. 2008;321(2):310–314.
- Nakamura M, Shono M, Ishimura K. Synthesis, characterization, and biological applications of multifluorescent silica nanoparticles. *Anal Chem*. 2007;79(17):6507–6514.
- Volle JN, Chambon G, Sayah A, Reymond C, Fasel N, Gijs MA. Enhanced sensitivity detection of protein immobilization by fluorescent interference on oxidized silicon. *Biosens Bioelectron*. 2003;19(5): 457–464.
- Luo D, Han E, Belcheva N, Saltzman WM. A self-assembled, modular DNA delivery system mediated by silica nanoparticles. *J Control Release*. 2004;95(2):333–341.
- Chen JF, Ding HM, Wang JX, Shao L. Preparation and characterization of porous hollow silica nanoparticles for drug delivery application. *Biomaterials*. 2004;25(4):723–727.
- Hirsch LR, Stafford RJ, Bankson JA, et al. Nanoshell-mediated near-infrared thermal therapy of tumors under magnetic resonance guidance. *Proc Natl Acad Sci U S A*. 2003;100(23):13549–13554.
- Tao Z, Morrow MP, Asefa T, et al. Mesoporous silica nanoparticles inhibit cellular respiration. *Nano Lett*. 2008;8(5):1517–1526.
- Di Pasqua AJ, Sharma KK, Shi YL, et al. Cytotoxicity of mesoporous silica nanomaterials. *J Inorg Biochem*. 2008;102(7):1416–1423.
- Slowing II, Wu CW, Vivero-Escoto JL, Lin VS. Mesoporous silica nanoparticles for reducing hemolytic activity towards mammalian red blood cells. *Small*. 2009;5(1):57–62.
- Lin YS, Haynes CL. Impacts of mesoporous silica nanoparticle size, pore ordering, and pore integrity on hemolytic activity. *J Am Chem Soc*. 2010;132(13):4834–4842.
- Kaewamatawong T, Shimada A, Okajima M, et al. Acute and subacute pulmonary toxicity of low dose of ultrafine colloidal silica particles in mice after intratracheal instillation. *Toxicol Pathol*. 2006;34(7): 958–965.
- Liu T, Li L, Teng X, et al. Single and repeated dose toxicity of mesoporous hollow silica nanoparticles in intravenously exposed mice. *Biomaterials*. 2011;32(6):1657–1668.
- Yu T, Hubbard D, Ray A, Ghandehari H. In vivo biodistribution and pharmacokinetics of silica nanoparticles as a function of geometry, porosity and surface characteristics. *J Control Release*. 2012;163(1): 46–54.
- van Schooneveld MM, Vucic E, Koole R, et al. Improved biocompatibility and pharmacokinetics of silica nanoparticles by means of a lipid coating: a multimodality investigation. *Nano Lett*. 2008;8(8): 2517–2525.
- Park YH, Bae HC, Jang Y, et al. Effect of the size and surface charge of silica nanoparticles on cutaneous toxicity. *Mol Cell Toxicol*. 2013;9(1): 67–74.
- He X, Nie H, Wang K, Tan W, Wu X, Zhang P. In vivo study of biodistribution and urinary excretion of surface-modified silica nanoparticles. *Anal Chem*. 2008;80(24):9597–9603.
- Xie G, Sun J, Zhong G, Shi L, Zhang D. Biodistribution and toxicity of intravenously administered silica nanoparticles in mice. *Arch Toxicol*. 2010;84(3):183–190.
- Huang X, Li L, Liu T, et al. The shape effect of mesoporous silica nanoparticles on biodistribution, clearance, and biocompatibility in vivo. *ACS Nano*. 2011;5(7):5390–5399.
- He Q, Zhang Z, Gao F, Li Y, Shi J. In vivo biodistribution and urinary excretion of mesoporous silica nanoparticles: effects of particle size and PEGylation. *Small*. 2011;7(2):271–280.
- Cho M, Cho WS, Choi M, et al. The impact of size on tissue distribution and elimination by single intravenous injection of silica nanoparticles. *Toxicol Lett*. 2009;189(3):177–183.
- Malfatti MA, Palko HA, Kuhn EA, Turteltaub KW. Determining the pharmacokinetics and long-term biodistribution of SiO<sub>2</sub> nanoparticles in vivo using accelerator mass spectrometry. *Nano Lett*. 2012;12(11): 5532–5538.
- Paek HJ, Chung HE, Lee JA, et al. Quantitative determination of silica nanoparticles in biological matrices and their pharmacokinetics and toxicokinetics in rats. *Adv Sci Mater*. In press 2014.
- Fu C, Liu T, Li L, Liu H, Chen D, Tang F. The absorption, distribution, excretion and toxicity of mesoporous silica nanoparticles in mice following different exposure routes. *Biomaterials*. 2013;34(10): 2565–2575.
- Ivanov S, Zhuravsky S, Yukina G, Tomson V, Korolev D, Galagudza M. In vivo toxicity of intravenously administered silica and silicon nanoparticles. *Materials*. 2012;5(10):1873–1889.
- Borak B, Biernat P, Prescha A, Baszczuk A, Pluta J. In vivo study on the biodistribution of silica particles in the bodies of rats. *Adv Clin Exp Med*. 2012;21(1):13–18.
- Chen M, von Mikecz A. Formation of nucleoplasmic protein aggregates impairs nuclear function in response to SiO<sub>2</sub> nanoparticles. *Exp Cell Res*. 2005;305(1):51–62.
- Hemmerich PH, von Mikecz AH. Defining the subcellular interface of nanoparticles by live-cell imaging. *PLoS One*. 2013;8(4):e62018.
- Deen WM, Lazzara MJ, Myers BD. Structural determinants of glomerular permeability. *Am J Physiol Renal Physiol*. 2001;281(4):F579–F596.
- Galagudza M, Korolev D, Postnov V, et al. Passive targeting of ischemic-reperfused myocardium with adenosine-loaded silica nanoparticles. *Int J Nanomedicine*. 2012;7:1671–1678.
- Finnie KS, Waller DJ, Perret FL, et al. Biodegradability of sol-gel silica nanoparticles for drug delivery. *J Sol-Gel Sci Technol*. 2009;49:12–18.
- Rosenholm JM, Mamaeva V, Sahlgren C, Lindén M. Nanoparticles in targeted cancer therapy: mesoporous silica nanoparticles entering pre-clinical development stage. *Nanomedicine-UK*. 2012;7(1):111–120.
- Martin KR. The chemistry of silica and its potential health benefits. *J Nutr Health Aging*. 2007;11(2):94–97.

**International Journal of Nanomedicine****Dovepress****Publish your work in this journal**

The International Journal of Nanomedicine is an international, peer-reviewed journal focusing on the application of nanotechnology in diagnostics, therapeutics, and drug delivery systems throughout the biomedical field. This journal is indexed on PubMed Central, MedLine, CAS, SciSearch®, Current Contents®/Clinical Medicine,

Journal Citation Reports/Science Edition, EMBase, Scopus and the Elsevier Bibliographic databases. The manuscript management system is completely online and includes a very quick and fair peer-review system, which is all easy to use. Visit <http://www.dovepress.com/testimonials.php> to read real quotes from published authors.

Submit your manuscript here: <http://www.dovepress.com/international-journal-of-nanomedicine-journal>