

# Long-acting muscarinic antagonist use in adults with asthma: real-life prescribing and outcomes of add-on therapy with tiotropium bromide

David Price<sup>1,2</sup>  
Alan Kaplan<sup>3</sup>  
Rupert Jones<sup>4</sup>  
Daryl Freeman<sup>5</sup>  
Anne Burden<sup>2</sup>  
Shuna Gould<sup>2</sup>  
Julie von Ziegenweidt<sup>2</sup>  
Muzammil Ali<sup>2</sup>  
Christine King<sup>2</sup>  
Mike Thomas<sup>6</sup>

<sup>1</sup>Academic Centre of Primary Care, University of Aberdeen, Aberdeen,

<sup>2</sup>Research in Real-Life, Cambridge, UK;

<sup>3</sup>Family Physician Airways Group of Canada, Richmond Hill, ON, Canada;

<sup>4</sup>Centre for Clinical Trials and Health Research, Plymouth University, Plymouth, <sup>5</sup>Norfolk Community Health and Care NHS Trust, Norwich,

<sup>6</sup>Primary Care Research, University of Southampton, Southampton, UK

**Background:** Randomized controlled trials indicate that addition of a long-acting muscarinic antagonist (LAMA) such as tiotropium may improve asthma control and reduce exacerbation risk in patients with poorly controlled asthma, but broader clinical studies are needed to investigate the effectiveness of LAMA in real-life asthma care.

**Methods:** Medical records of adults with asthma (aged  $\geq 18$  years) prescribed tiotropium were obtained from the UK Optimum Patient Care Research Database for the period 2001–2013. Patients diagnosed with chronic obstructive pulmonary disease were excluded, but no other clinical exclusions were applied. Two primary outcomes were compared in the year before (baseline) and the year after (outcome) addition of tiotropium: exacerbations (asthma-related hospital emergency department attendance or inpatient admission, or acute oral corticosteroid course) and acute respiratory events (exacerbation or antibiotic prescription with lower respiratory consultation). Secondary outcomes included lung function test results and short-acting  $\beta_2$  agonist usage. The Wilcoxon signed-rank test was used for variables measured on the interval scale, the marginal homogeneity test for categorized variables, and the paired *t*-test for lung function indices.

**Results:** Of the 2,042 study patients, 83% were prescribed an inhaled corticosteroid and 68% a long-acting  $\beta_2$  agonist during the baseline year; 67% were prescribed both. Comparing baseline and outcome years, the percentage of patients having at least one exacerbation decreased from 37% to 27% ( $P < 0.001$ ) and the percentage having at least one acute respiratory event decreased from 58% to 47% ( $P < 0.001$ ). There were no significant changes in lung function, and usage of short-acting  $\beta_2$  agonists (in salbutamol/albuterol equivalents) increased from a median (interquartile range) of 274 (110, 548) to 329 (110, 603)  $\mu\text{g/day}$  ( $P = 0.01$ ).

**Conclusion:** In this real-life asthma population, addition of LAMA therapy was associated with significant decreases in the incidence of exacerbations and antibiotic prescriptions for lower respiratory tract infections in the following year.

**Keywords:** anticholinergic, bronchodilator, exacerbation, asthma control, oral corticosteroids

## Introduction

Tiotropium bromide is an anticholinergic drug, categorized as a long-acting muscarinic antagonist (LAMA) or long-acting anticholinergic bronchodilator.<sup>1</sup> These drugs are used primarily in the management of chronic obstructive pulmonary disease (COPD), but interest in LAMA for the treatment of asthma has increased in recent years, particularly for patients whose asthma is poorly controlled with inhaled corticosteroids (ICS) and long-acting  $\beta_2$  agonists (LABA).<sup>1–4</sup> Despite clear guidelines and a range of available treatments, at least 50% of asthma patients continue to experience poor

Correspondence: David Price  
Academic Centre of Primary Care,  
University of Aberdeen, Polwarth  
Building, Foresterhill,  
Aberdeen, AB25 2ZD, UK  
Tel +44 12 2455 4588  
Fax +44 12 2455 0683  
Email david@respiratoryresearch.org

control of their current symptoms or future exacerbations, which significantly compromises the patient's quality of life and places considerable strain on health care systems.<sup>1,4</sup> Thus, there is a need for additional therapeutic options.

The mechanisms by which LAMA have the potential to improve asthma control have recently been reviewed.<sup>1</sup> Briefly, LAMA may: induce bronchodilation, or inhibit cholinergically-mediated bronchoconstriction, and with regular use inhibit the airway smooth muscle hypertrophy and hyper-responsiveness characteristic of chronic asthma; reduce cholinergically-mediated mucus secretion and inhibit goblet cell hyperplasia and mucus gland hypertrophy; and moderate leukocyte responses in the lower airways as well as proinflammatory gene expression by airway smooth muscle and bronchial epithelium. In addition, LAMA such as tiotropium may act as steroid-sparing agents in patients with severe or poorly controlled asthma,<sup>5,6</sup> which may alleviate some of the burden of corticosteroid use on health-related quality of life in these patients.<sup>7</sup>

A formulation of tiotropium delivered by soft mist inhaler has recently been approved in the UK<sup>8</sup> and in several other countries for add-on maintenance therapy in adults with asthma, specifically for patients who are currently treated with ICS and LABA yet experienced at least one severe exacerbation in the past year. Regulatory approval was based on the results of randomized controlled trials (RCTs) in patients with asthma which showed that addition of tiotropium to the existing controller regimen (ICS  $\pm$  LABA) improved lung function,<sup>2,3,9–13</sup> and may improve symptom control<sup>3,11,13</sup> and lower the patient's exacerbation risk,<sup>3</sup> although it did not alter the use of rescue medications such as short-acting  $\beta_2$  agonists (SABAs).<sup>2,3,10,13</sup>

However, these RCTs involved highly selected patient populations (for example, nonsmokers with no serious comorbidities) managed in tightly controlled settings, in most cases with relatively small patient numbers and short study periods.<sup>2,9–13</sup> Their broader applicability requires the support of clinical studies that better represent real-life populations and situations.<sup>14</sup> Clinical studies on the effectiveness of LAMA as add-on therapy in real-life asthma care are still needed.

To that end, we examined the clinical effects of add-on therapy with tiotropium in a diverse group of over 2,000 asthma patients treated in UK primary care practice. Study patients were at least 18 years of age and had a physician-recorded diagnosis of asthma; patients with a recorded diagnosis of COPD were excluded, but no other

clinically relevant exclusions were applied. By comparing exacerbation rates and other measures of asthma control in the year before and after the addition of tiotropium to the patient's asthma regimen, our goal was to determine whether the addition of LAMA improves asthma control in routine clinical practice.

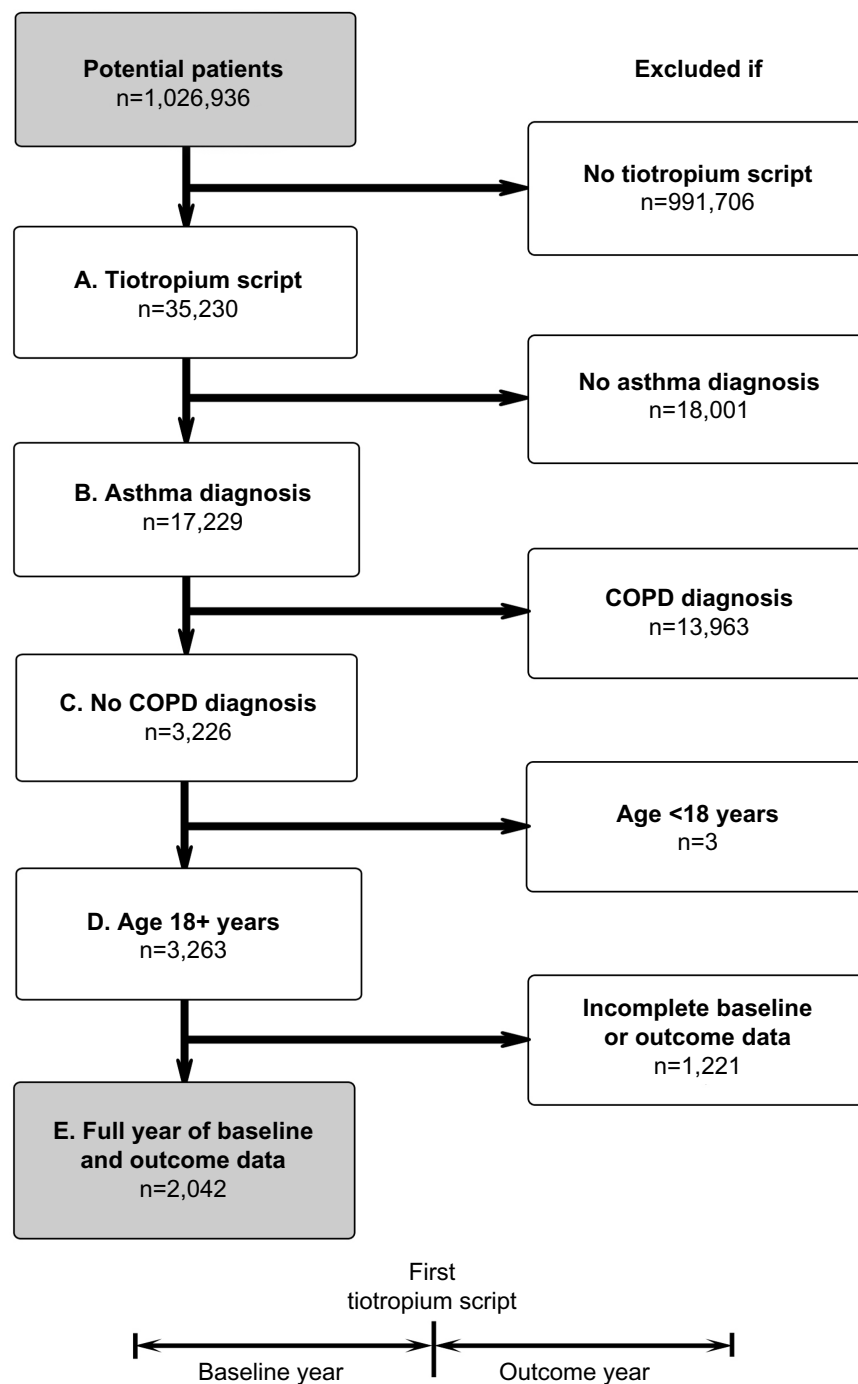
## Materials and methods

This historical, observational study of UK asthma patients used data obtained from the Optimum Patient Care Research Database (OPCRD; <http://www.optimumpatientcare.org>), which contains more than 5 million anonymized, longitudinal patient records from approximately 400 participating medical practices in the UK and is focused on patients with evidence of respiratory disease. The OPCRd has been approved by the Trent Multicentre Research Ethics Committee for use in clinical research, and the protocol for this study was approved by the Anonymised Data Ethics Protocols and Transparency Committee, which is the independent scientific advisory committee for the OPCRd.

Data were examined for the period 2001–2013. The medical record of each study patient was examined for the 12 months before (baseline) and 12 months after (outcome) the date of the patient's first prescription for tiotropium (index prescription date); hence, the index prescription dates spanned 2002–2012. Other LAMA drugs became available in the UK towards the end of the study period, but in the interest of investigating LAMA use in as many asthma patients as possible while using well-defined criteria, we limited the index prescription to tiotropium.

Two formulations of tiotropium bromide for inhalation were available in the UK during the study period: a dry-powder inhaler with a recommended dosage of 10  $\mu$ g (the dose delivered from one 18  $\mu$ g capsule) once a day<sup>15</sup> and a soft mist inhaler with a recommended dosage of 5  $\mu$ g (two puffs of 2.5  $\mu$ g) once a day.<sup>8</sup> Although equivalence data are not yet available for patients with asthma, these formulations and dosages have comparable bronchodilator efficacy in patients with COPD,<sup>16,17</sup> so we chose to study the patients as a group, regardless of formulation/dosage.

The study patients had at least one prescription for tiotropium during the study window, had a recorded diagnosis of asthma, had no recorded diagnosis of COPD, were at least 18 years of age at the index prescription date, and had two continuous years of data (12 months each of baseline and outcome data). Figure 1 illustrates the patient selection process and study design.



**Figure 1** Patient selection process and study design. Inclusion criteria: **(A)** at least one prescription for tiotropium, **(B)** recorded diagnosis of asthma, **(C)** no recorded diagnosis of COPD, **(D)** at least 18 years of age at first tiotropium prescription, and **(E)** full 12 months of data before (baseline) and after (outcome) first tiotropium prescription.

**Abbreviation:** COPD, chronic obstructive pulmonary disease.

## Effectiveness measures

The baseline year was used for patient characterization and the outcome year for evaluation of asthma-related effectiveness measures. A complete list of the baseline variables examined is provided in the Supplementary materials (Table S1), along with their definitions and methods of calculation.

The effectiveness measures compared before and after addition of tiotropium are described in Table 1. The two primary outcomes were exacerbations and acute respiratory events. We used the American Thoracic Society and European Respiratory Society definition of an exacerbation (asthma-related urgent hospital attendance/admission or acute course

**Table 1** Effectiveness measures compared before and after addition of tiotropium

Variable	Definition
<b>Primary</b>	
Exacerbations	Number of exacerbations, defined as occurrence of one of the following: <ol style="list-style-type: none"> <li>1. Asthma-related urgent hospital visit (A&amp;E or inpatient)</li> <li>2. Acute OCS course with evidence of LRT consultation<sup>a</sup></li> </ol>
Acute respiratory events	Number of events, defined as occurrence of one of the following: <ol style="list-style-type: none"> <li>1. Exacerbation</li> <li>2. Antibiotic prescription with evidence of LRT consultation<sup>a</sup></li> </ol>
<b>Secondary</b>	
Risk domain of asthma control	Controlled/uncontrolled Controlled if absence of all the following: <ol style="list-style-type: none"> <li>1. Asthma-related hospital visit (A&amp;E, inpatient, or outpatient)</li> <li>2. Acute OCS course with evidence of LRT consultation<sup>a</sup></li> <li>3. Antibiotic prescription with evidence of LRT consultation<sup>a</sup></li> </ol> Uncontrolled if any such events occurred in the year of interest
Acute OCS courses	Number of acute OCS courses with evidence of LRT consultation <sup>a</sup>
Antibiotic prescriptions	Number of antibiotic prescriptions with evidence of LRT consultation <sup>a</sup>
PEF (% predicted) <sup>b</sup>	Peak expiratory flow (PEF), expressed as percentage of predicted normal
FEV <sub>1</sub> (% predicted) <sup>b</sup>	Forced expiratory volume in one second (FEV <sub>1</sub> ), expressed as percentage of predicted normal
FEV <sub>1</sub> /FVC ratio <sup>b</sup>	Ratio of FEV <sub>1</sub> to forced vital capacity (FVC)
SABA usage	Prescribed SABA dosage, averaged over the year of interest, in salbutamol (albuterol) equivalents

**Notes:** <sup>a</sup>Any lower respiratory consultation (asthma, COPD, or LRT infection code, or lung function/asthma monitoring) with additional respiratory examinations, including chest X-rays and referrals; <sup>b</sup>when paired baseline and outcome data were available.

**Abbreviations:** A&E, Accident and Emergency Department; COPD, chronic obstructive pulmonary disease; LRT, lower respiratory tract; OCS, oral corticosteroid; SABA, short-acting  $\beta_2$  agonist.

of systemic corticosteroids),<sup>18</sup> although we limited systemic corticosteroid use to an acute course of oral corticosteroids (OCS) accompanied by a lower respiratory consultation (physician visit coded as asthma, COPD, lower respiratory tract infection, or lung function/asthma monitoring, with further respiratory examination, thoracic radiographs, or referral). An acute respiratory event was defined as either an exacerbation or an antibiotic prescription accompanied by a lower respiratory consultation (which was taken to indicate that the physician treated the episode as a lower respiratory tract infection). Multiple qualifying events within a 2-week

window were counted as a single exacerbation or acute respiratory event.

Secondary measures included the risk domain of asthma control (a proxy measure of asthma control as it pertains to exacerbation risk), specific components of the primary effectiveness measures (asthma-related acute OCS and antibiotic use), peak expiratory flow (PEF), forced expiratory volume in one second (FEV<sub>1</sub>), the ratio of FEV<sub>1</sub> to forced vital capacity (FVC), and SABA usage. Asthma control in the risk domain was achieved if there were no episodes of asthma-related hospital, OCS, or antibiotic usage in the year of interest. As the measure of SABA usage, the prescribed SABA dosage was averaged over the year of interest, with all SABA dosages converted to salbutamol (albuterol) equivalents (Table S1).

## Statistical analysis

The statistical analysis was conducted using Statistical Package for the Social Sciences version 21 software (IBM Corporation, Armonk, NY, USA) and Microsoft Excel 2007 (Microsoft Corporation, Redmond, WA, USA). Statistical significance was defined as  $P < 0.05$ . Mean values are presented with their standard deviations and median values with their interquartile ranges (25th and 75th percentiles). Where data were not normally distributed, median (interquartile range) values are reported.

Summary statistics were generated for all baseline and outcome variables. The number of exacerbations in the year before and after initiating tiotropium was then compared using the Wilcoxon signed-rank test for exacerbation counts measured on the interval scale and the marginal homogeneity test for categorized exacerbation data. These tests were also used to compare baseline and outcome years for acute respiratory events, acute OCS courses, antibiotic prescriptions, and SABA usage. The paired  $t$ -test was used to compare baseline and outcome years for PEF and FEV<sub>1</sub>, and the marginal homogeneity test was used for comparison of categorized FEV<sub>1</sub>/FVC ratios. The proportion of patients achieving asthma control in the risk domain was compared between baseline and outcome years using the McNemar test.

## Sensitivity analysis

Although the selection process deliberately excluded asthma patients who also had a recorded diagnosis of COPD, some patients with undiagnosed or unrecorded COPD may have been included, given the average age of the study patients and the prevalence of current or former smokers. For this reason, the primary analyses (exacerbations and acute respiratory events) were repeated for a subset of patients

who were unlikely to have COPD based on the following criteria:  $\leq 40$  years of age,  $>40$  years of age but never smoked, and  $>40$  years of age with no evidence of airway obstruction (baseline  $FEV_1/FVC$  ratio  $\geq 0.7$ ).

## Results

A total of 2,042 patients met the study criteria. The dry powder formulation of tiotropium was prescribed in 1,898 patients (93%) and the soft mist inhaler in 144 patients (7%). Key baseline patient characteristics are summarized in Tables 2 and 3; complete baseline data are provided in the Supplementary materials (Tables S2–S6). The mean age was 63 years; 59% of patients were female; the mean body mass index was 29 kg/m<sup>2</sup>; and of those whose smoking history was known, 54% were either current (17%) or former (37%) smokers. In the patients with baseline lung function data, the mean PEF was 69% of predicted normal, the mean

**Table 2** Key descriptive characteristics at baseline

Age (years)	
Mean (SD)	63.4 (14.2)
$>40$ years, n (%)	1,906 (93.3%)
Gender, female; n (%)	1,208 (59.2%)
BMI (kg/m <sup>2</sup> ); n (%)	1,959 (95.6%)
Mean (SD)	29.2 (6.7)
Overweight, n (%)	664 (33.9%) <sup>a</sup>
Obese, n (%)	765 (39.1%) <sup>a</sup>
Smoking status, known; n (%)	1,853 (90.7%)
Nonsmoker	849 (45.8%) <sup>a</sup>
Current smoker	322 (17.4%) <sup>a</sup>
Ex-smoker	682 (36.8%) <sup>a</sup>
PEF (% predicted), n (%)	1,358 (66.5%)
Mean (SD)	69.3 (21.8)
$FEV_1$ (% predicted), n (%)	848 (41.5%)
Mean (SD)	59.0 (29.0)
$FEV_1/FVC$ ratio, n (%)	780 (38.2%)
Mean (SD)	0.61 (0.24)
$\geq 0.7$ , n (%)	311 (39.9%) <sup>a</sup>
ICS prescribed, n (%)	1,690 (82.8%)
LABA prescribed, n (%)	1,385 (67.8%)
Adherence to ICS (%), n (%)	1,690 (82.8%)
Median (IQR)	100 (73, 134)
Controller-reliever ratio, n (%)	1,909 (93.5%)
Median (IQR)	0.50 (0.33, 0.71)
Hospitalization, $\geq 1$ <sup>b</sup> ; n (%)	
A&E	25 (1.2%)
Inpatient	22 (1.1%)
Outpatient	22 (1.1%)

**Notes:** n=2,042, unless otherwise noted; <sup>a</sup>percentage of patients with data for that variable; <sup>b</sup>at least one asthma-related hospital visit during baseline year (categorized).

**Abbreviations:** A&E, Accident and Emergency Department; BMI, body mass index;  $FEV_1$ , forced expiratory volume in one second, expressed as percentage of predicted normal; FVC, forced vital capacity; ICS, inhaled corticosteroid; IQR, interquartile range; LABA, long-acting  $\beta_2$  agonist; PEF, peak expiratory flow, expressed as percentage of predicted normal; SD, standard deviation.

**Table 3** Comparison of effectiveness measures before (baseline) and after (outcome) addition of tiotropium

	Baseline	Outcome	P-value <sup>a</sup>
Exacerbations			
$\geq 1$ , n (%)	752 (36.8%)	543 (26.6%)	$<0.001$
Acute respiratory events			
$\geq 1$ , n (%)	1,191 (58.3%)	965 (47.3%)	$<0.001$
Risk domain of asthma control			
Controlled, n (%)	846 (41.4%)	1,071 (52.4%)	$<0.001$ <sup>b</sup>
Acute OCS courses			
$\geq 1$ , n (%)	732 (35.8%)	521 (25.5%)	$<0.001$
Antibiotic prescriptions			
$\geq 1$ , n (%)	1,043 (51.1%)	842 (41.2%)	$<0.001$
PEF (% predicted), n (%)	926 (45.3%)	926 (45.3%)	
Mean (SD)	70.0 (21.5)	69.5 (21.7)	0.371 <sup>c</sup>
$FEV_1$ (% predicted), n (%)	398 (19.5%)	398 (19.5%)	
Mean (SD)	58.0 (29.5)	57.9 (30.5)	0.935 <sup>c</sup>
$FEV_1/FVC$ ratio, n (%)	353 (17.3%)	353 (17.3%)	
$<0.5$ , n (%) <sup>d</sup>	91 (25.8%)	116 (32.9%)	0.382
0.5–0.69, n (%) <sup>d</sup>	122 (34.6%)	86 (24.4%)	
$\geq 0.7$ , n (%) <sup>d</sup>	140 (39.7%)	151 (42.8%)	
SABA usage ( $\mu$ g/day) <sup>e</sup>			
Median (IQR)	274 (110, 548)	329 (110, 603)	0.010 <sup>f</sup>

**Notes:** n=2,042 unless otherwise noted; <sup>a</sup>marginal homogeneity test, unless otherwise noted; <sup>b</sup>McNemar test; <sup>c</sup>paired t-test; <sup>d</sup>percentage of 353 patients with paired  $FEV_1/FVC$  ratio data; <sup>e</sup>in salbutamol (albuterol) equivalents; <sup>f</sup>Wilcoxon signed-rank test.

**Abbreviations:**  $FEV_1$ , forced expiratory volume in one second, expressed as percentage of predicted normal; FVC, forced vital capacity; IQR, interquartile range; OCS, oral corticosteroid; PEF, peak expiratory flow, expressed as percentage of predicted normal; SABA, short-acting  $\beta_2$  agonist; SD, standard deviation.

$FEV_1$  was 59% of predicted normal, and the mean  $FEV_1/FVC$  ratio was 0.61; only 40% of the patients with  $FEV_1$  and FVC data had a ratio  $\geq 0.7$ .

At baseline, most patients were being treated according to British Thoracic Society guidelines<sup>19</sup> step 3 (21.5%) or step 4 (49.5%; Table S5). An ICS was prescribed in 83% of patients and a LABA in 68% of patients; 67% were prescribed both (Table S5). Median adherence to ICS therapy (Table S1) was 100%, with 51% of patients having  $\geq 100\%$  adherence (Table S5). The median controller-reliever ratio (Table S1) was 0.5, indicating approximately equal use of controller (ICS or leukotriene receptor antagonist) and reliever (SABA) medications, although 59% of patients had a ratio  $\geq 0.5$  (Table S5), indicating relatively more controller than reliever use. During their baseline year, 37% of patients had at least one exacerbation, 58% had at least one acute respiratory event, and 41% achieved asthma control in the risk domain (Table 3).

## Outcomes

Comparisons between baseline and outcome years for the various effectiveness measures are summarized in Table 3



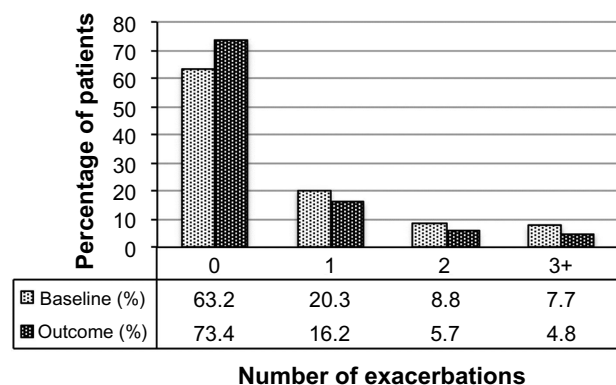
and illustrated in Figures 2–4, with further details provided in Table S6. Addition of tiotropium was associated with significantly fewer exacerbations (Figure 2) and acute respiratory events (Figure 3); 27% of patients had at least one exacerbation, 47% had at least one acute respiratory event, and 52% achieved asthma control in the risk domain during the outcome year (Table 3). In addition, tiotropium use was associated with significantly less asthma-related acute OCS and antibiotic use (Tables 3 and S6). Comparing baseline and outcome years, SABA usage significantly increased (Figure 4), but there were no significant changes in PEF, FEV<sub>1</sub>, or FEV<sub>1</sub>/FVC ratio in the patients with paired baseline and outcome data for those variables (Table 3).

## Sensitivity analysis

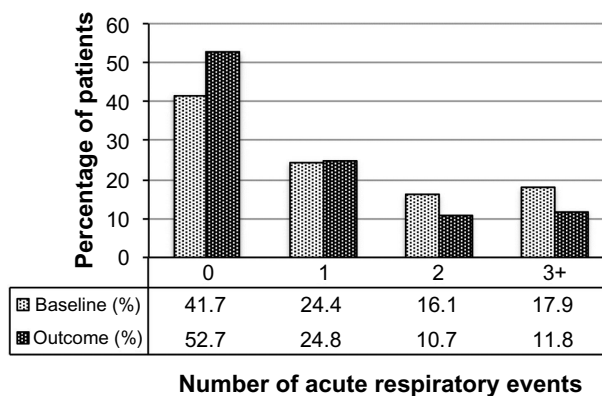
The sensitivity analysis was conducted on 928 patients (45% of the full study group) with the least likelihood of also having COPD. Baseline characteristics are summarized in Table 4, distributed by age group ( $\leq 40$  and  $>40$  years). Compared with the full study group, proportionately more patients in this subset were female (65%) and nonsmokers (76%), and fewer were current (9%) or former (15%) smokers. The mean FEV<sub>1</sub>/FVC ratio was 0.8. The rates of exacerbations and acute respiratory events during the baseline year were comparable with those of the full study group, and the addition of tiotropium was associated with a similar decrease in exacerbations and acute respiratory events during the outcome year (Tables 5 and S7).

## Discussion

Our study showed that primary care physicians in the UK have been prescribing LAMA for the treatment of asthma since 2002, even though there were no UK license or guideline recommendations for LAMA use in patients with asthma



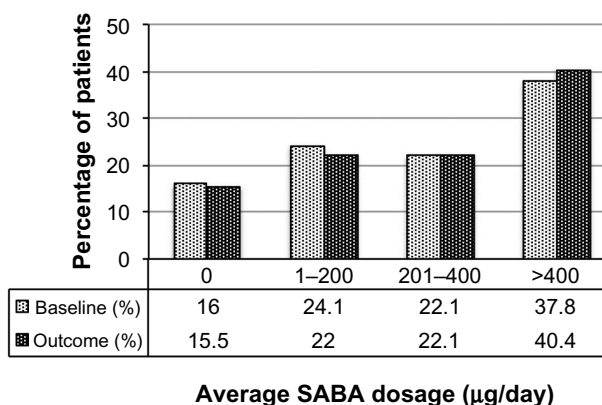
**Figure 2** Exacerbation rates before (baseline) and after (outcome) addition of tiotropium.  $P<0.001$  (marginal homogeneity test) comparing baseline and outcome years.



**Figure 3** Acute respiratory events before (baseline) and after (outcome) addition of tiotropium.  $P<0.001$  (marginal homogeneity test) comparing baseline and outcome years.

until September 2014.<sup>15</sup> It was not possible with our study design to determine why a LAMA was prescribed in these patients. However, 93% of the patients were over 40 years of age and 62% were over 60 years of age, more than 50% of whom were current or former smokers (Table S3). Most had significant comorbidities (Table S2), and many had impairments of lung function and asthma control in the risk domain despite treatment with moderate to high doses of ICS  $\pm$  LABA,  $\geq 100\%$  adherence to their ICS prescriptions, and controller-reliever ratios indicative of equal or greater use of controller medications throughout the year. Thus, it appears that physicians were prescribing LAMA predominantly as add-on therapy in older patients with poorly controlled asthma despite good treatment compliance, particularly in those who were current or former smokers.

In this population, addition of tiotropium was associated with a significant decrease in the incidence of exacerbations and other acute respiratory events (specifically, antibiotic



**Figure 4** SABA usage before (baseline) and after (outcome) addition of tiotropium. Dosages are in salbutamol (albuterol) equivalents;  $P=0.006$  (marginal homogeneity test) comparing baseline and outcome years.  
**Abbreviation:** SABA, short-acting  $\beta_2$  agonist.

**Table 4** Sensitivity analysis: baseline patient characteristics

Variable	Total	Age	
		≤40 years	>40 years
Age (years), n (%)	928 (100%)	136 (14.7%)	792 (85.3%)
Mean (SD)	61.3 (16.3)	33.6 (5.8)	66.1 (12.2)
Gender, female; n (%)	601 (64.8%)	97 (16.1%)	504 (83.9%)
Smoking status, known; n (%)	884 (95.3%)	123 (13.9%) <sup>a</sup>	761 (86.1%) <sup>a</sup>
Nonsmoker	674 (76.2%) <sup>b</sup>	58 (8.6%)	616 (91.4%)
Current smoker	79 (8.9%) <sup>b</sup>	39 (49.4%)	40 (50.6%)
Ex-smoker	131 (14.8%) <sup>b</sup>	26 (19.8%)	105 (80.2%)
PEF (% predicted); n (%)	615 (66.3%)	89 (14.5%)	526 (85.5%)
Mean (SD)	72.8 (22.1)	67.4 (20.1)	73.7 (22.3)
FEV <sub>1</sub> (% predicted); n (%)	351 (37.8%)	43 (12.3%)	308 (87.7%)
Mean (SD)	74.9 (27.5)	59.6 (25.2)	77.0 (27.2)
FEV <sub>1</sub> /FVC ratio, n (%)	328 (35.3%)	40 (12.2%)	288 (87.8%)
Mean (SD)	0.8 (0.2)	0.7 (0.3)	0.8 (0.2)

**Notes:** <sup>a</sup>Within-row percentages for the two age groups represent percentage of the total number of patients in that row; <sup>b</sup>percentage of 884 patients whose smoking status was known.

**Abbreviations:** FEV<sub>1</sub>, forced expiratory volume in one second, expressed as percentage of predicted normal; FVC, forced vital capacity; PEF, peak expiratory flow, expressed as percentage of predicted normal; SD, standard deviation.

prescriptions for lower respiratory tract infection), and a significant increase in the rate of asthma control in the risk domain over the following year. Whereas most of the aforementioned clinical trials emphasized current symptom control, our study was focused primarily on the effects of LAMA on the patient's exacerbation risk, as exacerbations have such a negative impact on the patient's quality of life and on health care resources.<sup>20</sup> The RCT by Kerstjens et al<sup>3</sup> showed a significant reduction in exacerbation risk with the addition of tiotropium; however, their patient population was younger than our study group by about 10 years (mean age, 53 years), 76% of their patients had never smoked, the remainder had a smoking history of <10 pack-years, and none of their patients had serious coexisting illnesses. Thus, it may be particularly noteworthy that in our study LAMA therapy was associated with a decrease in exacerbations even under less-than-ideal conditions. Also of note, LAMA use in our study was associated with a significant reduction in acute OCS use, which may be expected to reduce the multifaceted treatment burden documented for

**Table 5** Sensitivity analysis: comparison of primary measures before (baseline) and after (outcome) addition of tiotropium

Variable	Baseline	Outcome	P-value <sup>a</sup>
Exacerbations			
≥ 1, n (%)	363 (39.1%)	274 (29.5%)	<0.001
Acute respiratory events			
≥ 1, n (%)	567 (61.1%)	452 (48.7%)	<0.001

**Notes:** n=928; <sup>a</sup>marginal homogeneity test.

corticosteroid use in patients with severe or poorly controlled asthma.<sup>7</sup>

Given our study design, it may be argued that regression toward the mean could have contributed to the differences found between baseline and outcome years. This issue may have been obviated by using a matched control group not prescribed tiotropium, although such an approach would almost certainly have led to the loss of unmatched but otherwise qualified patients prescribed tiotropium and thus to a smaller number and perhaps less diverse group of patients for study. As it was, our study design involved data collected over 2 consecutive years within a continuum of ongoing therapy in long-term asthma patients that, for the group, spanned over a decade (2001–2013); and with the exception of the lung function indices, the baseline and outcome values each represented a full year of data, not repeated measures of single, isolated points in time. Thus, if regression toward the mean was a factor in our study results, its influence was likely small. Furthermore, our findings are supported by those of Kerstjens et al,<sup>3</sup> who showed in two replicate, randomized, double-blind, placebo-controlled, parallel-group clinical trials involving 48-week study periods and 912 patients in 15 countries that addition of tiotropium significantly increased the time to first exacerbation and decreased the exacerbation risk in patients whose asthma was poorly controlled despite maintenance treatment with ICS and LABA.

A legitimate concern, given our study design and patient demographics, is that the group may have included some asthma patients who also had undiagnosed or unrecorded COPD. The sensitivity analysis, limited to the patients least likely to have COPD, was conducted to address this issue. In this subset, addition of tiotropium was associated with decreases in the incidence of exacerbations and other acute respiratory events (specifically, antibiotic prescriptions for lower respiratory tract infection) similar to that found in the full study group. Thus, it is reasonable to conclude that LAMA therapy may be associated with a decrease in asthma exacerbations whether or not the patient may also have COPD.

A further criticism is that no separate control or comparator group was included, and treatment was not randomized. Our study purpose was to retrospectively examine the outcomes of clinical decisions made by primary care physicians with regard to the use of LAMA therapy in real-life patients with asthma. There was therefore no opportunity for us to randomize treatment, and as discussed above, our decision not to include a matched control group was made deliberately and with the goal of generating as large and diverse a

treatment group as possible. Thus, our study patients served as their own controls, the comparisons in asthma-related effectiveness measures being made between the year before and the year after initiating LAMA therapy. Despite this and other limitations imposed by our study design, our findings are generally consistent with those of the RCTs that included placebo<sup>2,3,9–12</sup> or comparator drug groups.<sup>10,13</sup>

Yet another potential shortcoming of our study design is that not all study patients had lung function data, and in those who did, no constraints could be placed on the timing of the lung function tests with regard to time of day (morning or evening) or bronchodilator administration (before or after bronchodilation), when the tests were performed in the outcome year relative to initiation of tiotropium therapy, nor on quality control of the measurements. In comparison, licensing studies require centralized spirometry over-reading to ensure high quality spirometry. In order to maximize patient numbers, we elected not to limit the study group to only those patients with paired lung function data. Physicians evidently were prescribing LAMA for patients with asthma even in the absence of lung function tests, so our full study group reflects recent clinical practices and outcomes.

The inability to dictate the timing and performance of the lung function tests in our study likely contributed to the large variations found in lung function values. Along with patient age and inclusion of smokers, that may explain the lack of significant changes in lung function with the addition of tiotropium, when improvements in lung function were a consistent RCT finding.<sup>2,3,9–13</sup> It is worth noting, however, that the RCT improvements in lung function with the addition of tiotropium, while statistically significant, often were small, and they were not consistently accompanied by improvements in asthma control or quality of life.<sup>2,3,9,12,13</sup>

Between baseline and outcome years, the change in SABA usage in our study group, while statistically significant, was small and may be considered of little clinical relevance. This finding is consistent with RCT results for tiotropium use in patients with asthma,<sup>2,3,10,13</sup> but it is somewhat at odds with the classification of tiotropium as a long-acting bronchodilator that is administered once daily,<sup>8,15</sup> and with the proposed mechanisms by which LAMA may improve asthma control.<sup>1</sup> A longer investigation period may be required to determine whether or not LAMA perform in practice as these mechanisms propose. In the meantime, it is useful to know that addition of tiotropium to the current treatment regimen may reduce the asthma patient's exacerbation risk within the first year of treatment.

## Conclusion

In this real-life population of adults with asthma treated in routine clinical practice, addition of a LAMA to the current treatment regimen was associated with a decrease in exacerbations and other acute respiratory events (specifically, antibiotic prescriptions for lower respiratory tract infections) in the following year.

## Acknowledgment

This study was funded solely by Research in Real-Life, Cambridge, UK.

## Disclosure

DP: board membership with Aerocrine, Almirall, Amgen, AstraZeneca, Boehringer Ingelheim, Chiesi, Meda, Mundipharma, Napp, Novartis, and Teva; consultancy with Almirall, Amgen, AstraZeneca, Boehringer Ingelheim, Chiesi, GlaxoSmithKline, Meda, Mundipharma, Napp, Novartis, Pfizer, and Teva; grants/pending grants with UK National Health Service, British Lung Foundation, Aerocrine, AstraZeneca, Boehringer Ingelheim, Chiesi, Eli Lilly, GlaxoSmithKline, Meda, Merck, Mundipharma, Novartis, Orion, Pfizer, Respiratory Effectiveness Group, Takeda, Teva, and Zentiva; payments for lectures/speaking engagements from Almirall, AstraZeneca, Boehringer Ingelheim, Chiesi, Cipla, GlaxoSmithKline, Kyorin, Meda, Merck, Mundipharma, Novartis, Pfizer, SkyePharma, Takeda, and Teva; payment for manuscript preparation from Mundipharma and Teva; patents (planned, pending, or issued) with AKL Ltd; payment for the development of educational materials for GlaxoSmithKline and Novartis; stock/stock options in AKL Ltd (shares) and in Research in Real Life Ltd (RiRL; 80% ownership) and its subsidiary social enterprise Optimum Patient Care; payment for travel/accommodation/meeting expenses from Aerocrine, Boehringer Ingelheim, Mundipharma, Napp, Novartis, and Teva; funding for patient enrollment or completion of research from Almirall, Chiesi, Teva, and Zentiva; peer reviewer for grant committees with Efficacy and Mechanism Evaluation program (2012), HTA (2014), and Medical Research Council (2014); and unrestricted funding for investigator-initiated studies from Aerocrine, AKL Ltd, Almirall, Boehringer Ingelheim, Chiesi, Meda, Mundipharma, Napp, Novartis, Orion, Takeda, Teva, and Zentiva.

AK: Neither he nor any member of his close family has any shares in pharmaceutical companies. In the last 3 years he has received speaker's honoraria for speaking at sponsored meetings or satellite symposia at conferences from the following companies marketing respiratory and allergy products: Aerocrine,



AstraZeneca, Boehringer Ingelheim, GlaxoSmithKline, Griffiths, Johnson & Johnson, Merck Sharp and Dohme, Novartis, Pfizer, Purdue, and Takeda. He has received honoraria for attending advisory panels from Aerocrine, AstraZeneca, Boehringer Ingelheim, GlaxoSmithKline, Novartis, and Takeda. He has received sponsorship to attend international scientific meetings from AstraZeneca and Pfizer.

RJ: In the last 3 years he has received speaker fees, travel expenses, or consultancy fees from Almirall, AstraZeneca, Boehringer Ingelheim, Chiesi, GlaxoSmithKline, Health Intelligence, Napp, Novartis, and Pfizer, and has undertaken research funded by Novartis.

DF: She has no shares in pharmaceutical companies. She has received speaker's honoraria for speaking at sponsored meetings from the following companies marketing respiratory products: Almirall, AstraZeneca, Boehringer Ingelheim, GlaxoSmithKline, Meda, Napp, and Teva. She has received honoraria for advisory panels from Almirall and financial support for conference attendance from Almirall, Napp, and Teva.

MT: Neither he nor any member of his close family has any shares in pharmaceutical companies. In the last 3 years he has received speaker's honoraria for speaking at sponsored meetings or satellite symposia at conferences from the following companies marketing respiratory and allergy products: Aerocrine, AstraZeneca, Boehringer Ingelheim, GlaxoSmithKline, Merck Sharp and Dohme, and Teva. He has received honoraria for attending advisory panels from Aerocrine, Almirall, AstraZeneca, Boehringer Ingelheim, Chiesi, GlaxoSmithKline, Merck Sharp and Dohme, and Novartis. He has received sponsorship to attend international scientific meetings from AstraZeneca, GlaxoSmithKline, and Mundipharma. He has received funding for research projects from Almirall and GlaxoSmithKline. He is chief medical adviser to the charity Asthma UK and a member of the British Thoracic Society SIGN Asthma guideline group and the National Institute for Health and Care Excellence asthma guideline group.

AB, SG, JvZ, and MA are employees of RiRL, which has conducted paid research in respiratory disease on behalf of the following organizations in the past 5 years: Aerocrine, AKL Ltd, Almirall, Boehringer Ingelheim, Chiesi, GlaxoSmithKline, Meda, Mundipharma, Napp, Novartis, Orion, Takeda, Teva, and Zentiva. CK declares that she has no conflicts of interest in relation to this study.

## References

- Price D, Fromer L, Kaplan A, van der Molen T, Román-Rodríguez M. Is there a rationale and role for long-acting anticholinergic bronchodilators in asthma? *NPJ Prim Care Respir Med*. 2014;24:14023.
- Kerstjens HA, Disse B, Schröder-Babo W, et al. Tiotropium improves lung function in patients with severe uncontrolled asthma: a randomized controlled trial. *J Allergy Clin Immunol*. 2011;128:308–314.
- Kerstjens HA, Engel M, Dahl R, et al. Tiotropium in asthma poorly controlled with standard combination therapy. *N Engl J Med*. 2012;367:1198–1207.
- Wilson J, Bateman ED, Pavord I, Lloyd A, Krivasi T, Esser D. Cost effectiveness of tiotropium in patients with asthma poorly controlled on inhaled glucocorticosteroids and long-acting  $\beta$ -agonists. *Appl Health Econ Health Policy*. 2014;12:447–459.
- Kapoor AS, Olsen SR, O'Hara C, Puttagunta L, Vethanayagam D. The efficacy of tiotropium as a steroid-sparing agent in severe asthma. *Can Respir J*. 2009;16:99–101.
- Adams KS, Lowe DK. Tiotropium for adults with inadequately controlled persistent asthma. *Ann Pharmacother*. 2013;47:117–123.
- Hyland ME, Whalley B, Jones RC, Masoli M. A qualitative study of the impact of severe asthma and its treatment showing that treatment burden is neglected in existing asthma assessment scales. *Qual Life Res*. September 9, 2014. [Epub ahead of print.]
- Summary of Product Characteristics. Spiriva Respimat 2.5 micrograms solution for inhalation. Electronic Medicines Compendium. Available from: <http://www.medicines.org.uk/emc/medicine/20134>. Accessed October 13, 2014.
- Fardon T, Haggart K, Lee DK, Lipworth BJ. A proof of concept study to evaluate stepping down the dose of fluticasone in combination with salmeterol and tiotropium in severe persistent asthma. *Respir Med*. 2007;101:1218–1228.
- Bateman ED, Kornmann O, Schmidt P, Pivovarov A, Engel M, Fabbri LM. Tiotropium is noninferior to salmeterol in maintaining improved lung function in B16-Arg/Arg patients with asthma. *J Allergy Clin Immunol*. 2011;128:315–322.
- Beeh KM, Moroni-Zentgraf P, Ablinger O, et al. Tiotropium Respimat® in asthma: a double-blind, randomised, dose-ranging study in adult asthma patients with moderate asthma. *Respir Res*. 2014;15:61.
- Vogelberg C, Engel M, Moroni-Zentgraf P, et al. Tiotropium in asthmatic adolescents symptomatic despite inhaled corticosteroids: a randomised dose-ranging study. *Respir Med*. 2014;108:1268–1276.
- Peters SP, Kunselman SJ, Icitovic N, et al. Tiotropium bromide step-up therapy for adults with uncontrolled asthma. *N Engl J Med*. 2010;363:1715–1726.
- Roche N, Reddel HK, Agusti A, et al. Integrating real-life studies in the global therapeutic research framework. *Lancet Respir Med*. 2013;1:e29–e30.
- Summary of Product Characteristics. Spiriva 18 microgram inhalation powder. Electronic Medicines Compendium. Available from: <http://www.medicines.org.uk/emc/medicine/10039>. Accessed October 13, 2014.
- Hohlfeld JM, Sharma A, van Noord JA, et al. Pharmacokinetics and pharmacodynamics of tiotropium solution and tiotropium powder in chronic obstructive pulmonary disease. *J Clin Pharmacol*. 2014;54:405–414.
- Mathioudakis AG, Chatzimavridou-Grigoriadou V, Evangelopoulou E, Mathioudakis GA, Siafakas NM. Comparative mortality risk of tiotropium administered via Handihaler or Respimat in COPD patients: are they equivalent? *Pulm Pharmacol Ther*. 2014;28:91–97.
- Reddel HK, Taylor DR, Bateman ED, et al. An official American Thoracic Society/European Respiratory Society statement: asthma control and exacerbations. *Am J Respir Crit Care Med*. 2009;180:59–59.
- British Thoracic Society. SIGN 141. British guideline on the management of asthma. London, UK: 2014. Available from: <https://www.brit-thoracic.org.uk/document-library/clinical-information/asthma/btssign-asthma-guideline-2014/>. Accessed October 13, 2014.
- Sims EJ, Price D, Haughney J, Ryan D, Thomas M. Current control and future risk in asthma management. *Allergy Asthma Immunol Res*. 2011;3:217–225.

## Supplementary materials

**Table S1** Baseline variables examined

Variable	Description
Variables examined at, or closest to, the index prescription date: <sup>a</sup>	
Age	In years; also categorized as 18–40, 41–60, or >60 years
Gender	Male or female
Body mass index	In kg/m <sup>2</sup> ; categorized as underweight (<18.5), normal (18.5–24.9), overweight (25–29.9), or obese (≥30)
Smoking status	Nonsmoker, current smoker, ex-smoker, or unknown
PEF, % predicted	Predicted normal PEF (L/sec) was calculated as follows: for men, (5.317 × height [m]) – (0.062 × age [years]) + 3.884; for women, (4.087 × height [m]) – (0.05 × age [years]) + 2.945; the patient's PEF reading was compared with the predicted value and expressed as a percentage of predicted normal
FEV <sub>1</sub> , % predicted	Predicted normal FEV <sub>1</sub> (L) was calculated as follows: for men, (4.3 × height [m]) – (0.029 × age [years]) – 2.49; for women, (3.95 × height [m]) – (0.025 × age [years]) – 2.6; for both, 25 years was used for age in patients 18–25 years; the patient's FEV <sub>1</sub> reading was compared with the predicted value and expressed as a percentage of predicted normal
FVC	Used to calculate FEV <sub>1</sub> /FVC ratio; also categorized as <0.5, 0.5–0.69, or ≥0.7
Variables examined regardless of when they occurred relative to index prescription date: <sup>a</sup>	
First asthma diagnosis	Date when asthma first diagnosed (if known)
Comorbidities	Including rhinitis (or prescription for rhinitis nasal spray), gastroesophageal reflux disease, and cardiac disease (or prescription for cardiac drugs)
Charlson comorbidity index score <sup>b</sup>	Categorized as 0, 1–4, or 5+
Variables examined in the year before the index prescription date: <sup>a</sup>	
Respiratory treatments	All asthma, allergy, and other respiratory treatments
ICS usage	Where ICS prescribed, number of inhalers, dosage, and average daily dosage (averaged over the year); all ICS dosages are in FP equivalents: large-particle BDP and budesonide dosages were divided by 2 to yield the FP-equivalent dosage; extra-fine particle BDP and ciclesonide dosages were considered directly equivalent to FP dosages for this study
General practice consultations	Number of general practice consultations, total and asthma-related
Acute OCS courses	Number of acute OCS courses accompanied by lower respiratory consultation; <sup>c</sup> total and categorized as 0, 1, 2, or 3+
BTS step	Treatment step (1–5), as described by BTS guidelines; <sup>d</sup> step 0 was added to denote patients prescribed no asthma treatment
Hospitalization	Number of asthma-related A&E attendances, inpatient admissions, or outpatient visits
SABA usage	Prescribed SABA dosage, averaged over the year: ([number of inhalers × doses per inhaler] + 365) × strength (μg); all SABA dosages are in salbutamol (albuterol) equivalents: terbutaline dosages were divided by 2.5 to yield the salbutamol-equivalent dosage; average daily dosage and categorized as 0, 1–200, 201–400, or >400 μg/day
Risk domain of asthma control	A composite proxy measure of exacerbation risk (see text); controlled or uncontrolled
Antibiotic prescriptions	Number of antibiotic prescriptions accompanied by lower respiratory consultation; <sup>c</sup> total and categorized as 0, 1, 2, or 3+
Other medications	Prescription for β-blockers, NSAIDs, paracetamol (acetaminophen), tricyclic antidepressants, and statins
Exacerbations	Number of asthma exacerbations (see text); total and categorized as 0, 1, 2, or 3+
Acute respiratory events	Number of acute events (see text); total and categorized as 0, 1, 2, or 3+
Adherence to ICS therapy	Adherence (%) = (total pack days + 365) × 100; where total pack days = sum (number of days/pack), and days/pack = actuations/pack ÷ actuations/day
Controller-reliever ratio	Calculated as units of controllers ÷ (units of controllers + units of relievers); controllers included ICS and LTRA, one unit = one inhaler for ICS or one prescription for LTRA; relievers were limited to SABA, one unit = one inhaler; LABA were excluded from this analysis, as ICS-LABA combination inhalers would have skewed the results

**Notes:** <sup>a</sup>Date of the patient's first tiotropium prescription; <sup>b</sup>Aylin P, Bottle A, Jen MH, et al. HSMR mortality indicators. London, UK: Doctor Foster Research; 2010. Available from: <http://www.nhs.uk/scorecard/Documents/HSMR%20methodology%2009%20November.pdf>. Accessed on March 15, 2013; <sup>c</sup>any lower respiratory consultation (asthma, COPD, or LRTI code, or lung function/asthma monitoring) with additional respiratory examinations, chest X-rays, and referrals; <sup>d</sup>British Guideline on the Management of Asthma. London, UK: British Thoracic Society; 2014. Available from: <https://www.brit-thoracic.org.uk/document-library/clinical-information/asthma/btssign-asthma-guideline-2014/>.

**Abbreviations:** A&E, Accident and Emergency Department; BDP, beclomethasone dipropionate; BTS, British Thoracic Society; COPD, chronic obstructive pulmonary disease; FEV<sub>1</sub>, forced expiratory volume in one second; FP, fluticasone propionate; FVC, forced vital capacity; ICS, inhaled corticosteroid; LABA, long-acting β<sub>2</sub> agonist; LTRA, leukotriene receptor antagonist; LRTI, lower respiratory tract infection; NSAIDs, nonsteroidal anti-inflammatory drugs; OCS, oral corticosteroid; PEF, peak expiratory flow; SABA, short-acting β<sub>2</sub> agonist.

**Table S2** Baseline patient characteristics: demographic and clinical variables

Age (years)	
Mean (SD)	63.4 (14.2)
18–40, n (%)	136 (6.7%)
41–60, n (%)	637 (31.2%)
>60, n (%)	1,269 (62.1%)
Gender	
Female, n (%)	1,208 (59.2%)
BMI (kg/m <sup>2</sup> ); n (%)	1,959 (95.6%)
Mean (SD)	29.2 (6.7)
Underweight (<18.5), n (%)	42 (2.1%)
Normal (18.5–24.9), n (%)	488 (24.9%)
Overweight (25–29.9), n (%)	664 (33.9%)
Obese (≥30), n (%)	765 (39.1%)
Smoking status, n (%)	
Nonsmoker	849 (41.6%)
Current smoker	322 (15.8%)
Ex-smoker	682 (33.4%)
Unknown	189 (9.2%)
PEF (% predicted), n (%)	1,358 (66.5%)
Mean (SD)	69.3 (21.8)
FEV <sub>1</sub> (% predicted), n (%)	848 (41.5%)
Mean (SD)	59.0 (29.0)
FEV <sub>1</sub> /FVC ratio, n (%)	780 (38.2%)
Mean (SD)	0.61 (0.24)
<0.5, n (%)	225 (28.8%)
0.5–0.69, n (%)	244 (31.3%)
≥0.7, n (%)	311 (39.9%)
CCI score, n (%)	
0	746 (36.5%)
1–4	854 (41.8%)
5+	442 (21.6%)
Comorbidities, n (%)	
Rhinitis <sup>a</sup>	730 (35.7%)
GERD	301 (14.7%)
Cardiac disease <sup>b</sup>	1,286 (63.0%)
Ischemic heart disease	308 (15.1%)
Comedications prescribed, n (%)	
β blocker	127 (6.2%)
NSAID	820 (40.2%)
Paracetamol	906 (44.4%)
Tricyclic antidepressant	221 (10.8%)
Statin	618 (30.3%)

**Notes:** n=2,042, unless otherwise noted; <sup>a</sup>diagnosis at any time or nasal spray prescribed during baseline or outcome year; <sup>b</sup>diagnosis or cardiac drugs prescribed at any time.

**Abbreviations:** BMI, body mass index; CCI, Charlson Comorbidity Index; FEV<sub>1</sub>, forced expiratory volume in one second, expressed as percentage of predicted normal; FVC, forced vital capacity; GERD, gastroesophageal reflux disease; NSAID, nonsteroidal anti-inflammatory drug; PEF, peak expiratory flow, expressed as percentage of predicted normal; SD, standard deviation.

**Table S3** Baseline smoking status by age group

Age group	Smoking status			
	Nonsmoker	Current smoker	Ex-smoker	Unknown
18–40 years, n (%)	58 (6.8%)	39 (12.1%)	26 (3.8%)	13 (6.9%)
41–60 years, n (%)	228 (26.9%)	168 (52.2%)	186 (27.3%)	55 (29.1%)
>60 years, n (%)	563 (66.3%)	115 (35.7%)	470 (68.9%)	121 (64.0%)
Total, n (%)	849 (100%)	322 (100%)	682 (100%)	189 (100%)

**Table S4** Distribution of baseline FEV<sub>1</sub>/FVC ratio in patients over 60 years of age, by smoking status

FEV <sub>1</sub> /FVC ratio	All	Current smokers	Ex-smokers
<0.5, n (%)	156 (29.1%)	16 (32.7%)	74 (33.9%)
0.5–0.69, n (%)	176 (32.8%)	19 (38.8%)	64 (29.4%)
≥0.7, n (%)	204 (38.1%)	14 (28.6%)	80 (36.7%)
Total, n (%)	536 (100%)	49 (100%)	218 (100%)

**Abbreviations:** FEV<sub>1</sub>, forced expiratory volume in one second, expressed as percentage of predicted normal; FVC, forced vital capacity.

**Table S5** Baseline patient characteristics: asthma treatment and control

SABA inhalers, n	
Median (IQR)	5 (2, 10)
Primary care consultations, n	
Median (IQR)	14 (9, 22)
Asthma consultations, <sup>a</sup> n	
Median (IQR)	1 (0, 2)
0, n (%)	664 (32.5%)
1, n (%)	593 (29.0%)
2, n (%)	347 (17.0%)
3+, n (%)	438 (21.4%)
Specific asthma medications, n (%)	
None	117 (5.7%)
SABA only	149 (7.3%)
SAAC only	11 (0.5%)
SABA + SAAC	35 (1.7%)
LABA ± SABA/SAAC	21 (1.0%)
ICS ± SABA/SAAC	301 (14.7%)
ICS + LABA ± SABA/SAAC	1,055 (51.7%)
LTRA ± SABA/SAAC	16 (0.8%)
ICS + LTRA ± SABA/SAAC	27 (1.3%)
ICS + LABA + LTRA ± SABA/SAAC	307 (15.0%)
LABA + LTRA + theophylline ± SABA/SAAC	2 (0.1%)
Theophylline	1 (<0.1%)
ICS inhalers, n	
Median (IQR)	6 (2, 10)
Baseline ICS dosage (μg/day) <sup>b,c</sup>	
Median (IQR)	247 (66, 493)
0, n (%)	352 (17.2%)
1–100, n (%)	296 (14.5%)
101–200, n (%)	311 (15.2%)
201–400, n (%)	385 (18.9%)
401–800, n (%)	436 (21.4%)
>800, n (%)	262 (12.8%)
ICS dosage pre-IPD (μg/day), <sup>c,d</sup> n (%)	1,690 (82.8%)
Median (IQR)	500 (200, 1,000)
ICS dosage at IPD (μg/day), <sup>c</sup> n (%)	537 (26.3%)
Median (IQR)	500 (400, 1,000)
Adherence to ICS (%), n (%)	1,690 (82.8%)
Median (IQR)	100 (73, 134)
<50%, n (%)	201 (11.9%)
50%–69.9%, n (%)	185 (10.9%)
70%–99.9%, n (%)	451 (26.7%)
≥100%, n (%)	853 (50.5%)
Controller-reliever ratio, n (%)	1,909 (93.5%)
Median (IQR)	0.5 (0.3, 0.7)
<0.5, n (%)	787 (41.2%)
≥0.5, n (%)	1,122 (58.8%)
LABA prescribed, n (%)	1,385 (67.8%)
Spacer device used, n (%)	279 (13.7%)
BTS step, n (%)	
0	118 (5.8%)
1	212 (10.4%)
2	252 (12.3%)
3	439 (21.5%)
4	1,011 (49.5%)
5	10 (0.5%)

(Continued)

**Table S5** (Continued)

Hospitalization, ≥1 <sup>e</sup> ; n (%)	
A&E	25 (1.2%)
Inpatient	22 (1.1%)
Outpatient	22 (1.1%)

**Notes:** n=2,042, unless otherwise noted; <sup>a</sup>nonspecialist primary care consultations where asthma was recorded; <sup>b</sup>prescribed ICS dosage, averaged over the baseline year; <sup>c</sup>in fluticasone-propionate equivalents; <sup>d</sup>dosage prescribed at most recent consultation before IPD; <sup>e</sup>at least one asthma-related hospital visit during baseline year (categorized).

**Abbreviations:** A&E, Accident and Emergency Department; BTS, British Thoracic Society; ICS, inhaled corticosteroid; IPD, index prescription date (date of first tiotropium script); IQR, interquartile range; LABA, long-acting  $\beta_2$  agonist; LTRA, leukotriene receptor antagonist; SAAC, short-acting anticholinergic; SABA, short-acting  $\beta_2$  agonist.



**Table S6** Comparison of effectiveness measures before (baseline) and after (outcome) addition of tiotropium

Variable	Baseline	Outcome	P-value
Exacerbations			<0.001 <sup>a</sup>
Median (IQR)	0 (0, 1)	0 (0, 1)	
0, n (%)	1,290 (63.2%)	1,499 (73.4%)	<0.001 <sup>b</sup>
1, n (%)	415 (20.3%)	330 (16.2%)	
2, n (%)	180 (8.8%)	116 (5.7%)	
3+, n (%)	157 (7.7%)	97 (4.8%)	
Acute respiratory events			<0.001 <sup>a</sup>
Median (IQR)	1 (0, 2)	0 (0, 1)	
0, n (%)	851 (41.7%)	1,077 (52.7%)	<0.001 <sup>b</sup>
1, n (%)	498 (24.4%)	506 (24.8%)	
2, n (%)	328 (16.1%)	218 (10.7%)	
3+, n (%)	365 (17.9%)	241 (11.8%)	
Risk domain of asthma control			
Controlled, n (%)	846 (41.4%)	1,071 (52.4%)	<0.001 <sup>c</sup>
Acute OCS courses			<0.001 <sup>a</sup>
Median (IQR)	0 (0, 1)	0 (0, 1)	
0, n (%)	1,310 (64.2%)	1,521 (74.5%)	<0.001 <sup>b</sup>
1, n (%)	402 (19.7%)	316 (15.5%)	
2, n (%)	175 (8.6%)	115 (5.6%)	
3+, n (%)	155 (7.6%)	90 (4.4%)	
Antibiotic prescriptions			<0.001 <sup>a</sup>
Median (IQR)	1 (0, 2)	0 (0, 1)	
0, n (%)	999 (48.9%)	1,200 (58.8%)	<0.001 <sup>b</sup>
1, n (%)	469 (23.0%)	440 (21.5%)	
2, n (%)	268 (13.1%)	196 (9.6%)	
3+, n (%)	306 (15.0%)	206 (10.1%)	
PEF (% predicted), n (%)	926 (45.3%)	926 (45.3%)	
Mean (SD)	70.0 (21.5)	69.5 (21.7)	0.371 <sup>d</sup>
FEV <sub>1</sub> (% predicted), n (%)	398 (19.5%)	398 (19.5%)	
Mean (SD)	58.0 (29.5)	57.9 (30.5)	0.935 <sup>d</sup>
FEV <sub>1</sub> /FVC ratio, n (%)	353 (17.3%)	353 (17.3%)	
<0.5	91 (25.8%)	116 (32.9%)	0.382 <sup>b</sup>
0.5–0.69	122 (34.6%)	86 (24.4%)	
≥0.7	140 (39.7%)	151 (42.8%)	
SABA usage (μg/day) <sup>e</sup>			0.010 <sup>a</sup>
Median (IQR)	274 (110, 548)	329 (110, 603)	
0, n (%)	327 (16.0%)	317 (15.5%)	0.006 <sup>b</sup>
1–200, n (%)	493 (24.1%)	450 (22.0%)	
201–400, n (%)	451 (22.1%)	451 (22.1%)	
>400, n (%)	771 (37.8%)	824 (40.4%)	

**Notes:** n=2,042, unless otherwise noted; <sup>a</sup>Wilcoxon signed-rank test; <sup>b</sup>marginal homogeneity test; <sup>c</sup>McNemar test; <sup>d</sup>paired t-test; <sup>e</sup>in salbutamol (albuterol) equivalents.

**Abbreviations:** FEV<sub>1</sub>, forced expiratory volume in one second, expressed as percentage of predicted normal; FVC, forced vital capacity; IQR, interquartile range; OCS, oral corticosteroid; PEF, peak expiratory flow, expressed as percentage of predicted normal; SABA, short-acting  $\beta_2$  agonist; SD, standard deviation.

**Table S7** Sensitivity analysis: comparison of primary measures before (baseline) and after (outcome) addition of tiotropium

Variable	Baseline	Outcome	P-value
Exacerbations			<0.001 <sup>a</sup>
Median (IQR)	0 (0, 1)	0 (0, 1)	
0, n (%)	565 (60.9%)	654 (70.5%)	<0.001 <sup>b</sup>
1, n (%)	198 (21.3%)	167 (18.0%)	
2, n (%)	93 (10.0%)	62 (6.7%)	
3+, n (%)	72 (7.8%)	45 (4.8%)	
Acute respiratory events			<0.001 <sup>a</sup>
Median (IQR)	1 (0, 2)	0 (0, 1)	
0, n (%)	361 (38.9%)	476 (51.3%)	<0.001 <sup>b</sup>
1, n (%)	231 (24.9%)	228 (24.6%)	
2, n (%)	149 (16.1%)	108 (11.6%)	
3+, n (%)	187 (20.2%)	116 (12.5%)	

**Notes:** n=928; <sup>a</sup>Wilcoxon signed-rank test; <sup>b</sup>marginal homogeneity test.

**Abbreviation:** IQR, interquartile range.

## References

1. Aylin P, Bottle A, Jen MH, Middleton S. HSMR mortality indicators. London; UK: Doctor Foster Research; 2010. Available from: <http://www.nhs.uk/scorecard/Documents/HSMR%20methodology%2009%20November.pdf>. Accessed March 15, 2014.
2. British Guideline on the Management of Asthma. London; UK: British Thoracic Society; 2014. Available from: <https://www.brit-thoracic.org.uk/document-library/clinical-information/asthma/btssign-asthma-guideline-2014/>. Accessed October 13, 2014.