

# Oncogenic mutation profiling in new lung cancer and mesothelioma cell lines

David CL Lam<sup>1</sup>  
 Susan Y Luo<sup>1</sup>  
 Wen Deng<sup>2</sup>  
 Johnny SH Kwan<sup>3</sup>  
 Jaime Rodriguez-Canales<sup>4</sup>  
 Annie LM Cheung<sup>5</sup>  
 Grace HW Cheng<sup>6</sup>  
 Chi-Ho Lin<sup>6</sup>  
 Ignacio I Wistuba<sup>4</sup>  
 Pak C Sham<sup>6</sup>  
 Thomas SK Wan<sup>7</sup>  
 Sai-Wah Tsao<sup>5</sup>

<sup>1</sup>Department of Medicine, <sup>2</sup>School of Nursing, <sup>3</sup>Department of Psychiatry, University of Hong Kong, Hong Kong SAR, People's Republic of China; <sup>4</sup>Department of Translational Molecular Pathology, MD Anderson Cancer Center, University of Texas at Houston, Houston, TX, USA; <sup>5</sup>Department of Anatomy, <sup>6</sup>Center for Genome Sciences, <sup>7</sup>Department of Pathology, University of Hong Kong, Hong Kong SAR, People's Republic of China

Correspondence: David CL Lam  
 Department of Medicine, University of Hong Kong, Queen Mary Hospital, 102 Pokfulam Road, Hong Kong, People's Republic of China  
 Tel +852 2255 4455  
 Fax +852 2816 2863  
 Email dcllam@hku.hk

**Background:** Thoracic tumor, especially lung cancer, ranks as the top cancer mortality in most parts of the world. Lung adenocarcinoma is the predominant subtype and there is increasing knowledge on therapeutic molecular targets, namely *EGFR*, *ALK*, *KRAS*, and *ROS1*, among lung cancers. Lung cancer cell lines established with known clinical characteristics and molecular profiling of oncogenic targets like *ALK* or *KRAS* could be useful tools for understanding the biology of known molecular targets as well as for drug testing and screening.

**Materials and methods:** Five new cancer cell lines were established from pleural fluid or biopsy tissues obtained from Chinese patients with primary lung adenocarcinomas or malignant pleural mesothelioma. They were characterized by immunohistochemistry, growth kinetics, tests for tumorigenicity, *EGFR* and *KRAS* gene mutations, *ALK* gene rearrangement and OncoSeq mutation profiling.

**Results:** These newly established lung adenocarcinoma and mesothelioma cell lines were maintained for over 100 passages and demonstrated morphological and immunohistochemical features as well as growth kinetics of tumor cell lines. One of these new cell lines bears *EML4-ALK* rearrangement variant 2, two lung cancer cell lines bear different *KRAS* mutations at codon 12, and known single nucleotide polymorphism variants were identified in these cell lines.

**Discussion:** Four new lung adenocarcinoma and one mesothelioma cell lines were established from patients with different clinical characteristics and oncogenic mutation profiles. These characterized cell lines and their mutation profiles will provide resources for exploration of lung cancer and mesothelioma biology with regard to the presence of known oncogenic mutations.

**Keywords:** lung adenocarcinomas, oncogenic mutations, EGFR, ALK, KRAS

## Introduction

Despite knowledge on known therapeutic targets like epidermal growth factor receptor (*EGFR*) mutations and anaplastic lymphoma kinase (*ALK*) gene rearrangement, and continuous efforts in clinical trials, lung cancer remains the top cause of cancer morbidity and mortality in most parts of the world.<sup>1,2</sup> Lung adenocarcinomas arising from female nonsmokers have emerged as a prominent subgroup among lung cancer patients, especially in Asia, compared to lung cancer arising from smokers and squamous cell carcinoma as in the past.<sup>3,4</sup> Oncogenic driver mutations have been identified and they are present in mutually exclusive ways in individual lung tumors. These oncogenic mutations include *EGFR*, KRas (*KRAS*), *ALK*, *MET*, etc.<sup>5</sup> Some of these oncogenic mutations possess therapeutic implications for being the targets of actions for small molecule tyrosine kinase inhibitors (TKI).<sup>6</sup> Even with the presence of these molecular targets, however, there are mutant tumors that do not respond to the corresponding targeted agents, or

mutant tumors that do respond initially followed subsequently by development of resistance to the corresponding targeted agents. A better understanding of the mechanisms of actions of these therapeutic oncogenic driver mutations in lung cancer may allow for identification of new molecular targets for better diagnostics and targeted therapy of lung cancer.

We have previously reported the establishment of lung cancer cell lines with known clinical properties like sex, smoking habits, and ethnicity.<sup>7</sup> In this study, we have further established five new cell lines with four being adenocarcinomas and one being a malignant pleural mesothelioma (MPM) cell line. They carry different molecular properties and together with the four published before, represent the heterogeneity of thoracic tumors.<sup>7</sup> The aim of this study was to establish and to characterize new cancer cell lines from Chinese patients with known clinical characteristics, tumor staging, prior therapy, and known oncogenic mutation profiles so that these new lung cancers and mesotheliomas could provide defined materials for research in lung cancer and mesothelioma. The morphological and growth kinetics properties as well as oncogenic driver mutation status of the cell lines were described. Mutation profiling was performed to document the single nucleotide polymorphism (SNP) variants of these newly established lung cancer and MPM cell lines.

## Materials and methods

### Method of culture, medium, and supplement

All clinical specimens were collected after informed written consents had been given by the respective subjects. The study was approved by the University of Hong Kong/Hong Kong Hospital Authority Hong Kong West Cluster Institutional Review Board/Ethics Committee (UW 11 – 326).

Pleural effusions were all obtained with aseptic techniques and centrifuged to collect malignant cells. For the patient with mesothelioma, tumor deposits on pleura were biopsied under direct vision through flexirigid pleuroscopy. The pieces of fresh pleural biopsy were minced with pairs of fine scissors under aseptic conditions. Collected tissue or cancer cells were seeded into two different culture media, namely, ACL4 or RPMI supplemented with 10% fetal bovine serum, in order to maximize the chance of establishment. ACL4 medium was prepared according to the protocol published by Oie et al.<sup>8</sup> Penicillin and Streptomycin ( $10^5$  U) were added as antibiotic prophylaxis for the first passage and both were omitted from the culture medium recipe from the second passage onwards. The cells were then incubated in 37°C and 5% carbon dioxide. Attached cells reaching confluent density

were subcultured and growth was maintained in either ACL4 or RPMI medium.

### Growth kinetics study

In studying the growth kinetics of these newly established cell lines,  $10^5$  cells of each cell line were seeded into 25-cm<sup>2</sup> culture flasks with 5 mL of growth medium. Cells were counted on days 1, 2, 4, 6, 8, 10, and 12 on triplicate flasks.

### Test for tumorigenicity in nude mice

Tumor cells were harvested and counted with supravital staining. At least  $2 \times 10^5$  cells were resuspended in 0.5 mL of growth medium. The whole cell suspension was then injected beneath the dorsal skin of two nude mice. The mice were maintained and observed for up to 6 months for any development of xenograft tumor. Xenografts were harvested before they reached an external diameter of 1 cm. The harvested xenografts were fixed in 4% formalin and were then processed into paraffin blocks with tissue sections cut and examined to confirm the presence of tumor xenograft as well as analyzed for their morphological characteristics. If no obvious tumor development was observed at the end of 6 months, the corresponding mice were sacrificed and dissected to look for tumor involvement in internal organs by gross and microscopic examination. For those lines with no xenograft development, a gradation of inoculums containing  $2 \times 10^6$ ,  $2 \times 10^7$ , and  $2 \times 10^8$  tumor cells were performed further on two separate mice for each inoculum dosage.

### Morphological characteristics and immunohistochemical studies

For each newly established cell line, cultured tumor cells were centrifuged, fixed, and embedded into paraffin cell blocks according to routine cytology procedures. The cultured cells and xenografts were characterized for their morphological characteristics by routine hematoxylin and eosin stain, mucin content, and immunohistochemistry with a panel of monoclonal antibodies against cytokeratins (CK7 [M7018; DAKO {Agilent Technologies, Santa Clara, CA, USA}], CK20 [M7019; DAKO]) and the thyroid transcription factor TTF-1 (M3575; DAKO). All cell lines were subjected to DNA fingerprinting with markers STR D11S922, D11S4099, and D11S4152.

### Epidermal growth factor receptor (EGFR) mutation at exons 18–21 and KRAS mutation detection

Genomic DNA was extracted from freshly harvested cells, and extracted DNA was analyzed for mutations in exons 18–21 of

the *EGFR* gene and codons 12, 13, and 61 of the *KRAS* gene by direct sequencing according to previous protocol.<sup>9</sup> The methods and primers used for polymerase chain reaction (PCR)-based sequencing detection were described elsewhere.<sup>9</sup>

## ALK rearrangement and variant detection

The Vysis *ALK* FISH dual color break apart rearrangement probe (Abbott Vysis 05J89-001; Abbott Laboratories, Abbott Park, IL, USA) was applied according to manufacturer's instructions. The FISH detection was performed on unstained 5- $\mu$ m-thick paraffin-embedded formalin-fixed cytospin sections. Ten microliters of *ALK* probe was administered to each air-dried slide, and the slides were then denatured at 94°C for 4 minutes, then hybridized overnight at 37°C in Vysis HYBrite (Abbott Laboratories). The sections were then mounted with 10  $\mu$ L of VECTASHIELD mounting medium (Vector Laboratories, Inc., Burlingame, CA, USA) before being ready for examination and scoring of results. Scoring of FISH study results were performed with Leica DMR fluorescence microscope (Leica Microsystems, Wetzlar, Germany). The FISH signals were evaluated by TSKW who was blinded to the nature of the cell lines. At least 100 nonoverlapping and intact tumor nuclei were evaluated. The tumor cells were considered to be positive for FISH study when the red and green probe signals were wider apart than the distance of two nuclei or when the corresponding paired green signal was lost for any indexed red signal.

Immunohistochemistry was performed on unstained 4- $\mu$ m paraffin-embedded cell block sections. The primary antibody for *ALK* (Thermo Fisher Scientific, Waltham, MA, USA) was used with a dilution of 1:500. Reverse transcription-PCR combined with direct sequencing of the PCR products were performed for any cell line with *ALK* rearrangement with FISH to identify *EML4-ALK* variants.<sup>10</sup>

## Karyotyping

### Metaphase preparation

To accumulate metaphases, cells were treated with colcemid (Sigma-Aldrich Co, St Louis, MO, USA; 0.03 mg/mL) for 3 hours. Chromosome spreads were prepared as previously described.<sup>11</sup> Slides with cells in metaphase were left for aging at room temperature for up to 7 days prior to spectral karyotyping (SKY) procedures.

## SKY

The slides were treated with DNase-free RNase solution (0.1 mg/mL) at 37°C for 1 hour. After washing in 2X SSC for 10 minutes, the slides were dehydrated successively in 70%, 85%, and 95% ethanol at room temperature for 2 minutes each,

and were then air-dried with nitrogen gas. The slides were treated with proteinase K solution (0.02  $\mu$ g/mL) at 37°C for 15 minutes and washed in 2X SSC for 10 minutes. The slides were then fixed in 2% paraformaldehyde and were washed in 2X SSC for 10 minutes each, followed by successive dehydration again in 70%, 85%, and 95% ethanol for 2 minutes. The slides were placed in 70% formamide/2X SSC at 80°C for 4 minutes and again were successively dehydrated in 70%, 85%, and 95% ethanol for 2 minutes each. The SKY probes (SkyPaint™ mixture; Applied Spectral Imaging, Migdal HaEmek, Israel), after prior denaturation at 80°C for 7 minutes and being placed at 37°C for 1 hour in a water bath, were then applied to denatured slides, which were then covered by coverslips, followed by sealing rubber cement and then were further incubated at 37°C for more than 36 hours in a humidified chamber. The recommendations of the SKY probe manufacturer were followed for SKY signal detection. SKY image capturing and karyotyping were performed using the SkyVision Imaging System equipped with a Zeiss Axioplan 2 fluorescence microscope (Zeiss Germany, Jena, Germany). Twenty-five to thirty metaphases from each cell line were analyzed using SKY. Karyotypes were analyzed using international nomenclature system.<sup>12</sup>

## Oncogenic molecular profiling with RainDance OncoSeq analysis

Three micrograms of genomic DNA was extracted from each cell line and optical density was measured with 260/280 ratio to be 1.8 or more before proceeding with further tests. The RainDance OncoSeq predesigned panel (RainDance Technologies, Inc., Lexington, KY, USA) used, which covered 142 oncogenes and included downstream Solexa next-generation sequencing with a coverage depth of 200 $\times$ . The FastQC package v0.11.2 was used to assess the read quality. Filtered read sequences were mapped to the human reference genome (hg19) with Burrows–Wheeler Alignment v0.7.9a,<sup>13</sup> and PCR as well as optical duplicates were marked using Picard v1.105. Variants were called using FreeBayes v0.9.14<sup>14</sup> with a quality score cutoff of  $\geq 30$  and a minimum coverage of ten per sample. Variant annotation was performed with ANNOVAR<sup>15</sup> using GALAXY<sup>16</sup> and functional predictions were conducted using SIFT<sup>17,18</sup> and PROVEAN.<sup>19</sup>

## Results

### Clinicopathological features of the patients from which cell lines were established (Table 1)

FA34 was grown from the malignant pleural effusion of a 34-year-old nonsmoking lady with primary adenocarcinoma

**Table 1** A table summarizing the clinical characteristics of patients from which these new cell lines were derived and established

Cell lines	FA34	FA44	FA49	FA98	PME1
Sex/age (years)	Female/34	Male/58	Male/53	Male/80	Male/73
Smoking habits	Lifetime nonsmoker	Chronic smoker	Chronic smoker	Chronic smoker	Ex-smoker
Tissue origin	Pleural fluid	Pleural fluid	Pleural fluid	Pleural fluid	Pleural fluid
Tumor cell type	Adenocarcinoma	Adenocarcinoma	Adenocarcinoma	Adenocarcinoma	Malignant pleural mesothelioma
Staging	IV	IV	IV	IV	IV
Prior treatment	Paclitaxel, pemetrexed, cisplatin, erlotinib	Paclitaxel, carboplatin	Paclitaxel, carboplatin	Empirical erlotinib	No treatment prior to collection of biopsy specimen
Tumorigenicity in nude mice	Yes	Yes	Yes	Yes	No
Potential oncogenic mutations	<i>EML4-ALK</i> translocation variant 2	<i>KRAS</i> mutation at codon 12 (G215T)	<i>KRAS</i> mutation at codon 12 (G219A)	<i>EGFR</i> and <i>KRAS</i> wild type	

of the right lower lobe (T3N2M1b). She presented with pleural effusion and had tried multiple lines of systemic chemotherapy, including paclitaxel, pemetrexed, and TKI treatment (despite the fact that she was known to have *EGFR* wild type lung tumor). Computerized tomography (CT) of thorax and abdomen showed no other tumor site. The patient passed away in 2008 with progressive disease despite different lines of drug therapy, but the cultured cells continue to proliferate to beyond the 100th passage, and it was only after the patient passed away that *EML4-ALK* translocation became known to be present in up to 7% of non-small cell lung cancer.<sup>20</sup> The established line was tested to harbor *EML4-ALK* translocation with variant type 2 of exon 20: exon 20 rearrangement (Table 1).

FA44 came from the pleural fluid of a 58-year-old male chronic smoker who presented with right pleural effusion with confirmed malignant pleural effusion with metastatic adenocarcinoma. CT scan revealed a contrast-enhancing tumor in the right lower lobe and metastatic nodules in the right middle and left lower lobes of the lungs. There was no other mass lesion in the liver, spleen, or kidneys. The patient had received paclitaxel/carboplatin for six cycles with subsequent stable disease maintained for 5 months. He subsequently went into progressive disease with increasing recurrent right pleural effusion and enlargement of the primary tumor as shown on CT scan. Pleural fluid was obtained on this disease progression. His general condition deteriorated quickly and did not allow time for consideration of salvage chemotherapy.

FA49 was also taken from the pleural fluid of a 53-year-old chronic smoker who was diagnosed to have stage IV adenocarcinoma of lung with primary tumor in the right lower lobe. He also received paclitaxel and carboplatin for six cycles with partial response maintained for 3 months after chemotherapy, followed by progressive disease with enlargement of primary tumor, increasing right pleural effusion, and development of new cervical lymphadenopathy.

The right pleural fluid was obtained with therapeutic pleurocentesis at that juncture.

FA98 was cultured from an 80-year-old male chronic smoker presented with right pleural effusion and CT finding of a right hilar mass with right upper lobe collapse. The patient opted for, because of his age, upfront *EGFR*-TKI and not chemotherapy despite the fact that *EGFR* mutation status was not known for him at the time of diagnosis. The patient was started on erlotinib and he decided to maintain it despite the fact that *EGFR* mutation tests came back to show no mutation subsequently. His general condition continued to deteriorate with rapid accumulation of right pleural effusion requiring multiple pleurocentesis, where aspirated pleural fluid was saved for culture. He finally succumbed after 4 weeks of empirical erlotinib.

PME1 was derived from a 73-year-old man who had retired from incinerator service with exposure to asbestos; he presented with right pleural effusion and nodular thickening of right pleura and ascites. CT scan revealed bilateral nodular pleural thickening, right pleural effusion, and ascites. Repeated diagnostic pleural tapping only showed atypical cells not diagnostic of malignant effusion. Flexirigid pleuroscopy was performed with pleural biopsy taken, which confirmed on both light and electronic microscopy to be MPM. The patient received six cycles of pemetrexed and cisplatin with stable disease maintained for the subsequent 7 months, after which the disease progressed with increasing bilateral pleural effusion and ascites and he finally succumbed.

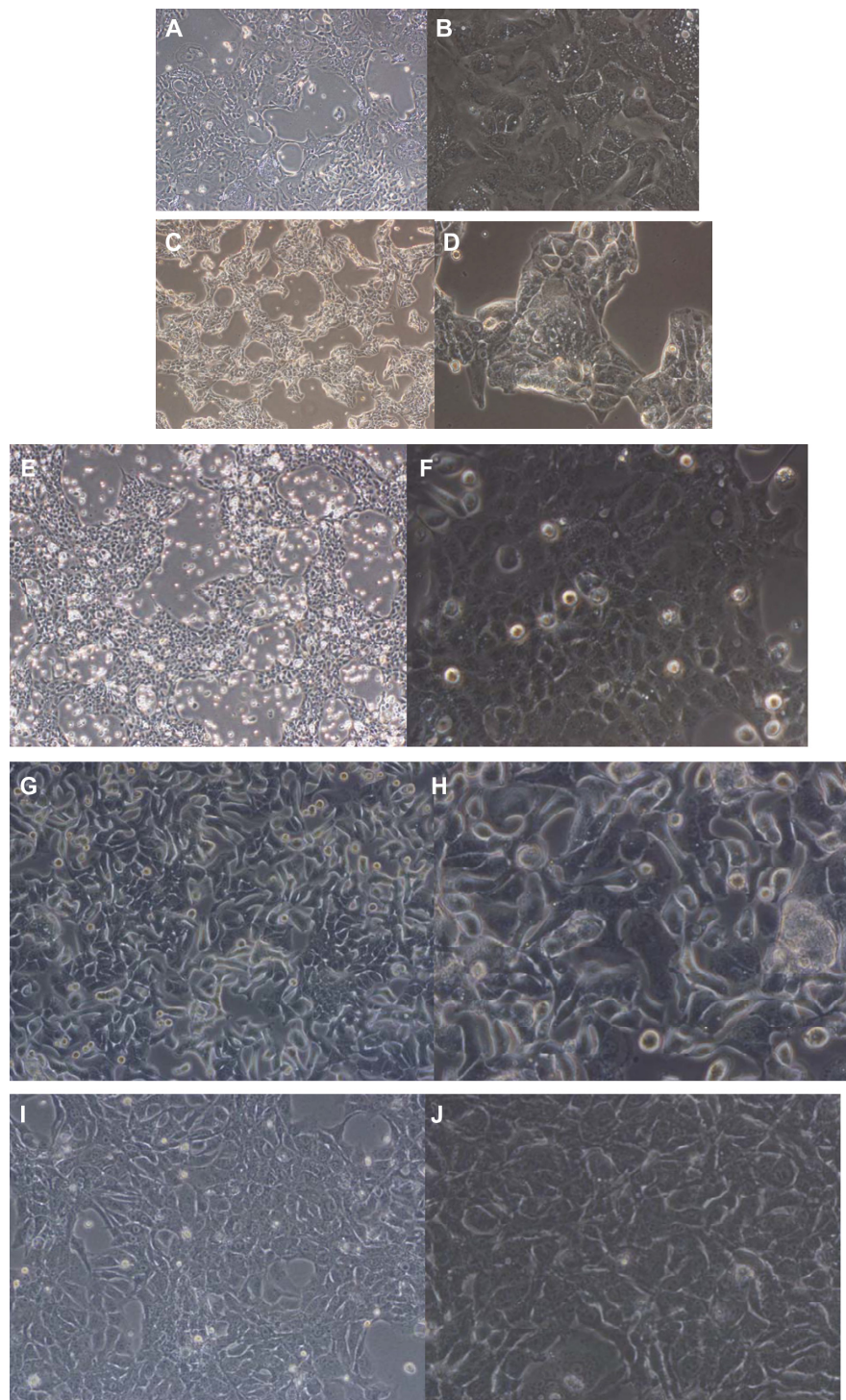
FA34, FA44, FA49, and FA98 were derived from pleural fluid adenocarcinoma cells taken from patients who had received prior treatment with either platinum-based chemotherapy (for FA34, FA44, and FA49) or empirical *EGFR*-TKI treatment (for FA98) before *EGFR* mutation status was known. PME1 was taken from patient alongside diagnostic pleuroscopy and thus mesothelioma cells were treatment-naïve.



## Cell culture characteristics and authentication

All cell lines were maintained for over 100 passages. The five cell lines demonstrated different morphological properties. All the cell lines demonstrated tightly packed

attached cells that tended to pile up before reaching confluency (Figure 1). This feature might be related to the formation of cell clusters in these cell lines before spreading to form confluent tumor cell layers. FA44, FA49, FA98, and PME1 showed fairly uniform populations of



**Figure 1** Photomicrographs showing morphological and immunohistochemical properties of different cell lines.

**Notes:** Side-by-side photomicrographs at 40× and 200× magnification, respectively, for each of FA34 (**A** and **B**), FA44 (**C** and **D**), FA49 (**E** and **F**), FA98 (**G** and **H**), and PME1 (**I** and **J**) cell lines.

cells while FA34 showed slightly more variation in tumor cell size.

All the lung adenocarcinoma cell lines were stained positive for CK7 but stained negative for CK20, which is the typical immunohistochemical profile for carcinoma of pulmonary origin. The lung adenocarcinoma cell lines were also all positive for CK7 and TTF1, and negative for CK20 (Figure 2). Napsin A was stained positive for FA44 but negative for other lung adenocarcinoma cell lines in this report (Figure 3). PME1 was also stained positive for anti-vimentin A and B but negative for mucin, WT1, and calretinin (Figure 4), which again suggested mesothelial origin. All the cell lines showed different fragments on DNA fingerprinting with markers STR D11S922, D11S4099, and D11S4152.

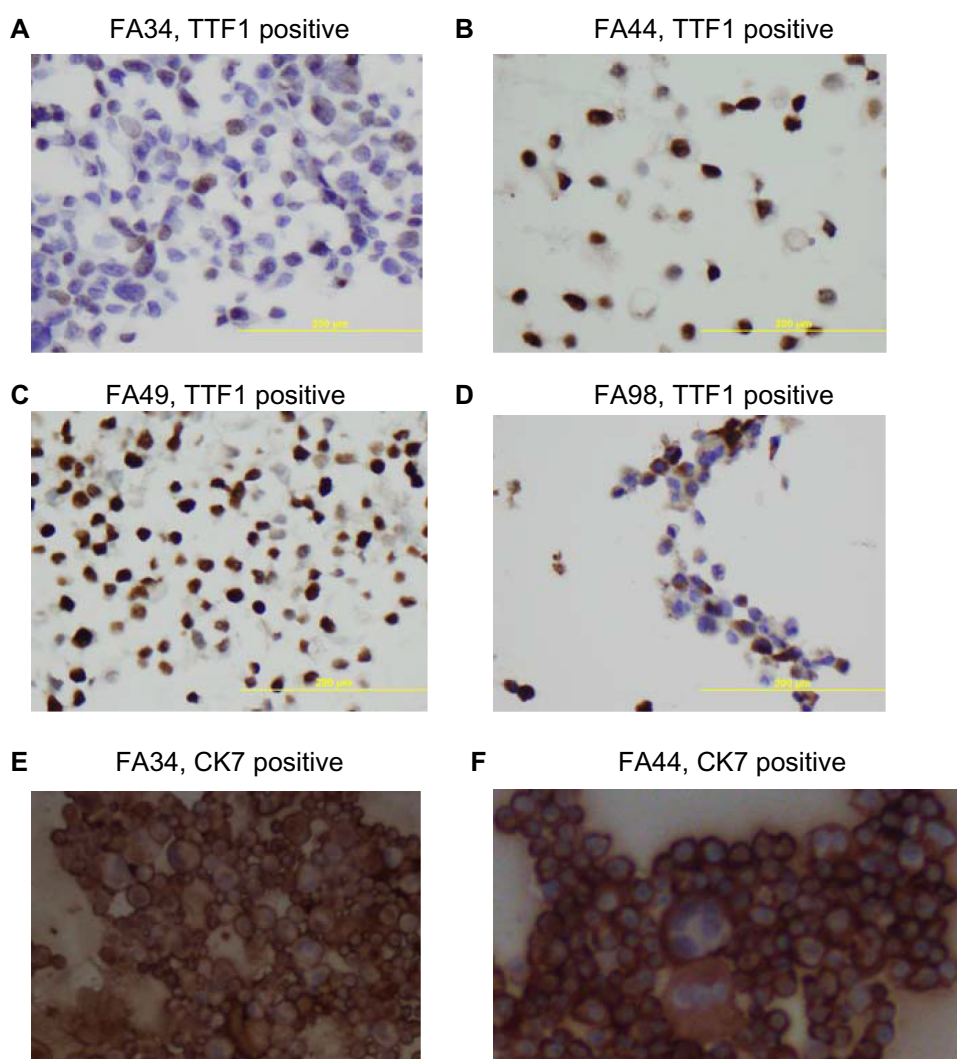
## Growth kinetic study

FA44, FA49, FA98, and PME1 showed a short lag phase of up to 2 days. FA98 grew faster than others (Figure 5).

FA34 showed an initial lag phase of around 5 days followed by a more accelerated phase (Figure 5). FA44, FA49, FA98, and PME1 showed similar doubling times of about 22 hours; FA34 showed a doubling time of around 34 hours.

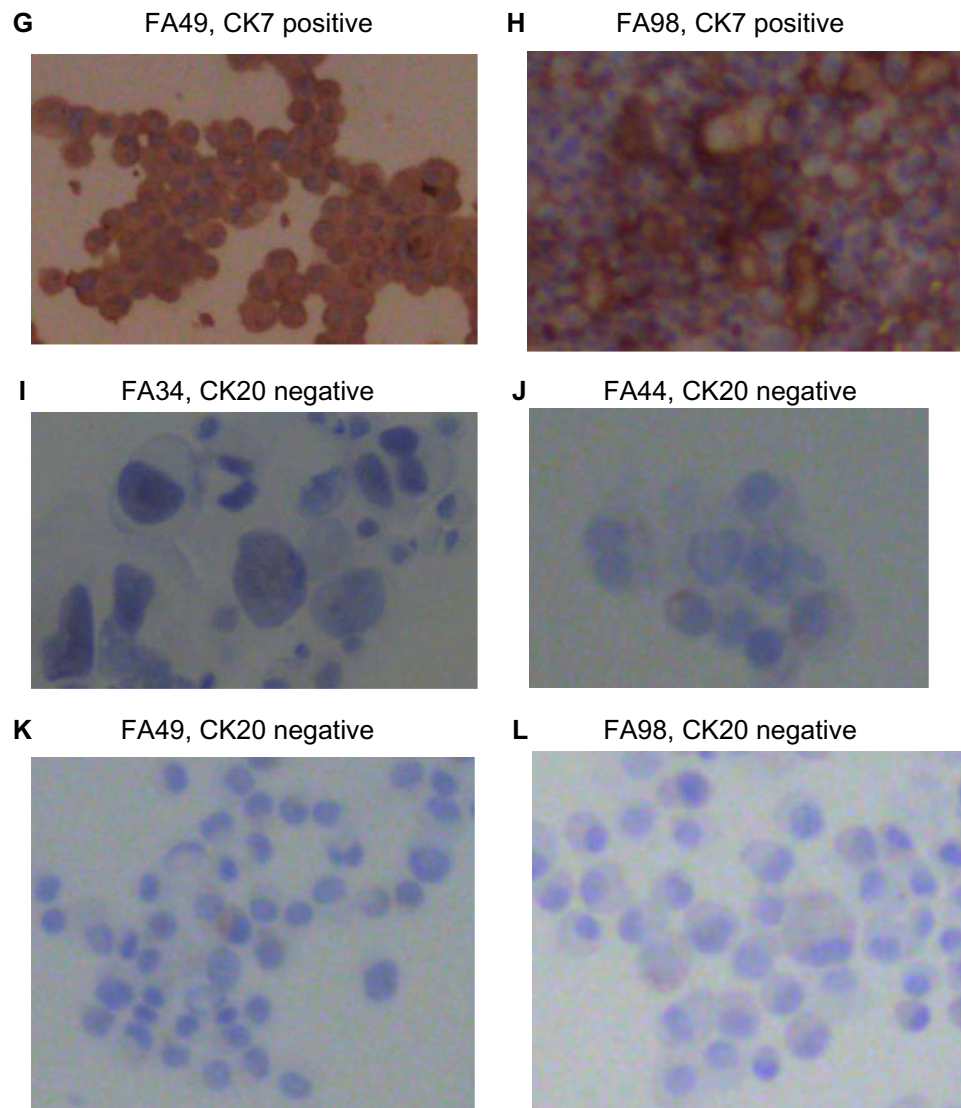
## Test for tumorigenicity in nude mice

All adenocarcinoma cell lines, FA34, FA44, FA49, and FA98, formed xenografts of 1 cm in about 6–8 weeks after subcutaneous inoculation of  $10^6$  cells onto the back of a nude mouse for each cell line. The xenografts obtained from these cell inoculations could result in tumors again after retransplantation (passaging) into separate nude mice. The time for xenograft detection was 3–4 weeks after injection (when a subcutaneous bulge became visible), and by 6–8 weeks after inoculation the xenograft would reach the external dimension of 1 cm for xenograft harvesting. PME1 failed to produce any xenograft at 12 weeks after tumor cell injection with at least three separate attempts for each dose of tumor cell injection.



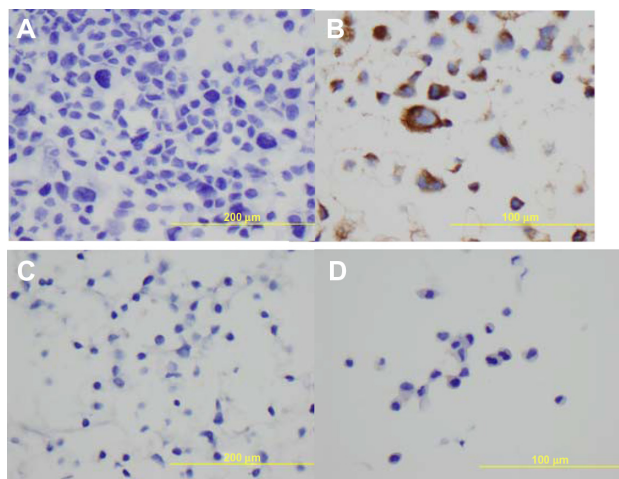
**Figure 2** (Continued)





**Figure 2** Immunohistochemical staining with TTF1, CK7, and CK20 on paraffin cell blocks for all four lung adenocarcinoma cell lines.

**Notes:** (A–D) TTF1 positive staining for each cell line, (E–H) CK7 positive staining for each line, and (I–L) CK20 negative staining for each line.



**Figure 3** Immunohistochemical staining with Napsin A on paraffin cell blocks for all the four lung adenocarcinoma cell lines.

**Notes:** (A) FA34, (B) FA44, (C) FA49, and (D) FA98.

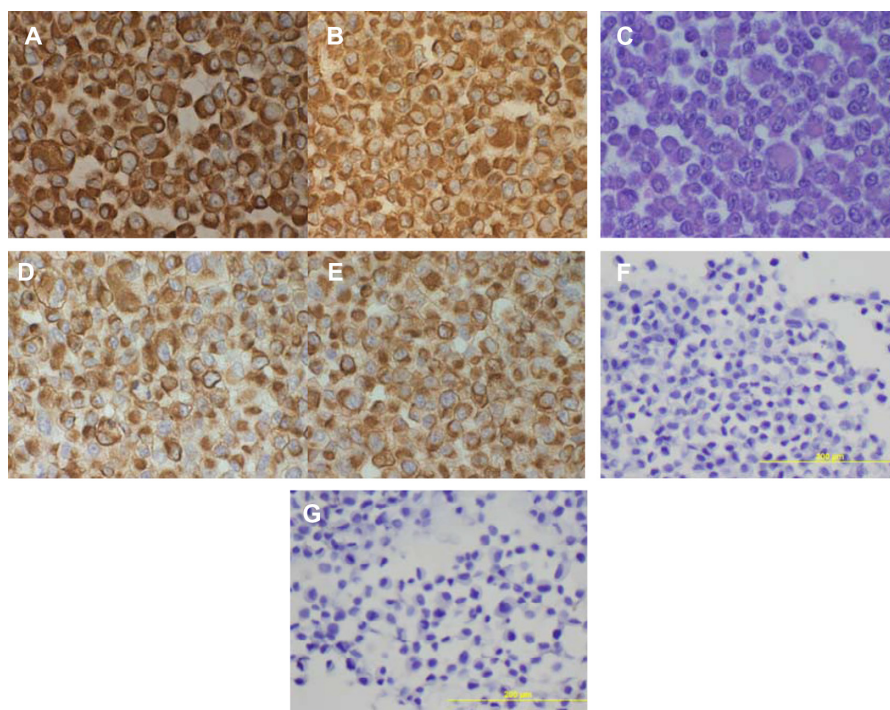
Xenografts obtained from FA34, FA44, FA49, and FA98 were sectioned and reviewed, and they all showed xenografts predominantly containing the inoculated tumor cells.

### **EGFR and KRAS mutation status**

All of the cell lines were tested wild type for *EGFR* mutation at exons 18–21. FA44 and FA49 were both *KRAS* mutations at codon 12 with G215T and G219A, respectively. No *KRAS* mutation was found at codons 12, 13, or 61 in FA34, FA98, and PME1.

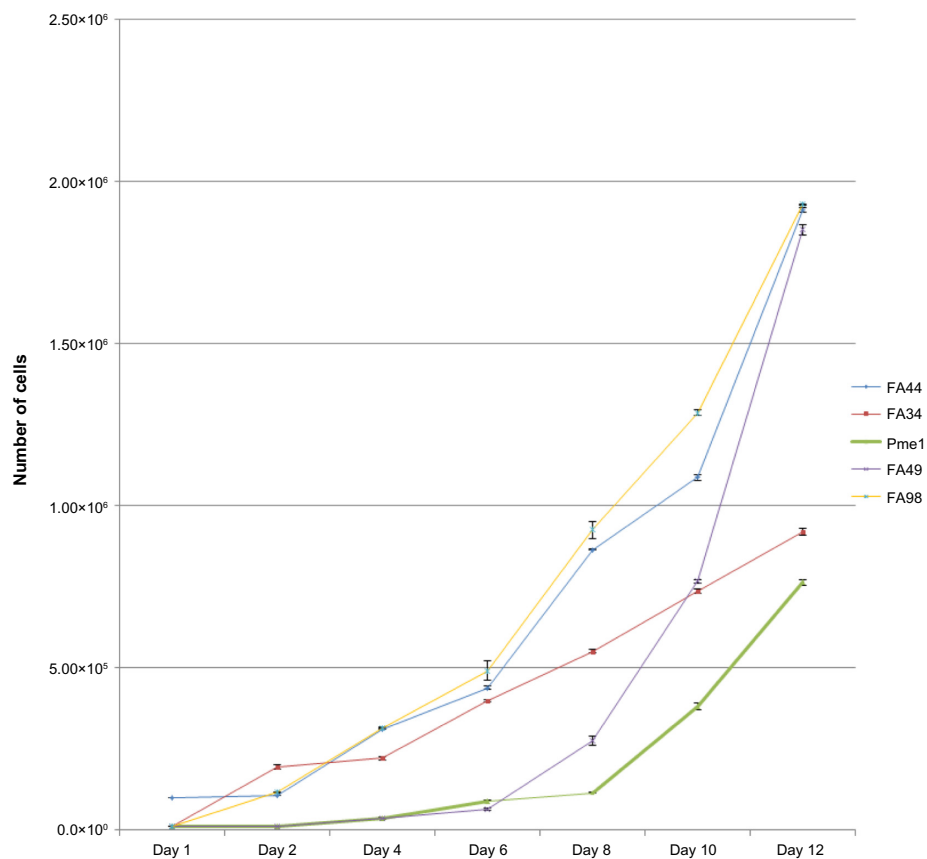
### **ALK rearrangement and variant detection**

FISH for *ALK* rearrangement were tested for all these new cell lines, with FA34 showing *ALK* rearrangement (Figure 6) according to standard scoring criteria



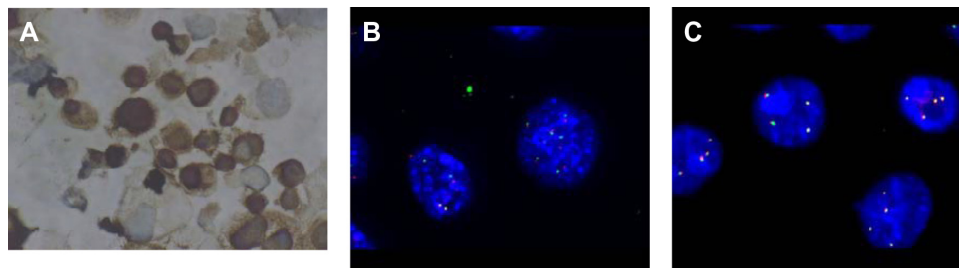
**Figure 4** Immunohistochemical staining on paraffin cell blocks from PME1.

**Notes:** Staining with (A) anti-vimentin a, (B) anti-vimentin b, (C) mucin negative, (D) anti-CK a, (E) anti-CK b, (F) calretinin negative, and (G) WT1 negative.



**Figure 5** Growth curves of all the cell lines showing the initial lag phase followed by accelerated growth phase in most cell lines with FA44, FA49, and FA98 showing the fastest growth rate compared to FA34 and PME1.





**Figure 6** ALK immunohistochemistry and FISH.

**Notes:** (A) Paraffin cell block section of FA34 showed positive ALK immunohistochemical staining; (B) ALK rearrangement with FISH for FA34; and (C) FA44 as a control showing no ALK rearrangement with FISH.

while all the others showed no *ALK* rearrangement. *ALK* immunohistochemical staining for sections from FA34 cytospin cell blocks also showed strong positive staining when compared to other cell lines and the kit control. Reverse transcription PCR showed transcripts compatible with E20: A20 translocation, ie, *EML4-ALK* variant 2.

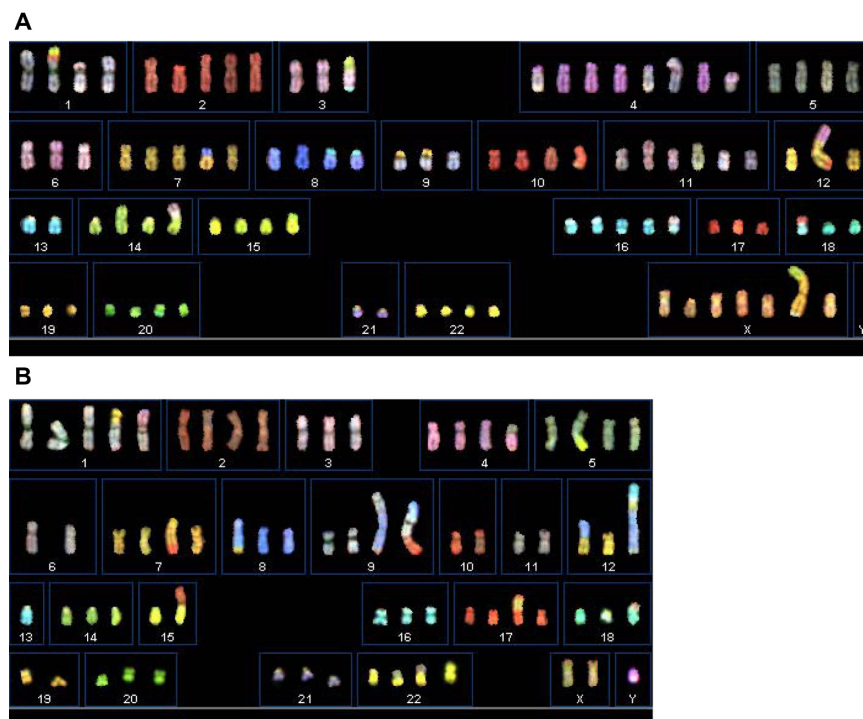
### Karyotypes of the cell lines analyzed using SKY

We analyzed the karyotypes of the cancer cell lines at late passages (greater than passage 50) using SKY (Figure 7). All of these newly established lung cancer cell lines showed specific clonal chromosomal aberrations (Table 2). Numerically, FA34b is near-tetraploid; FA44a, FA49, FA98, and PME1 are near-triploid.

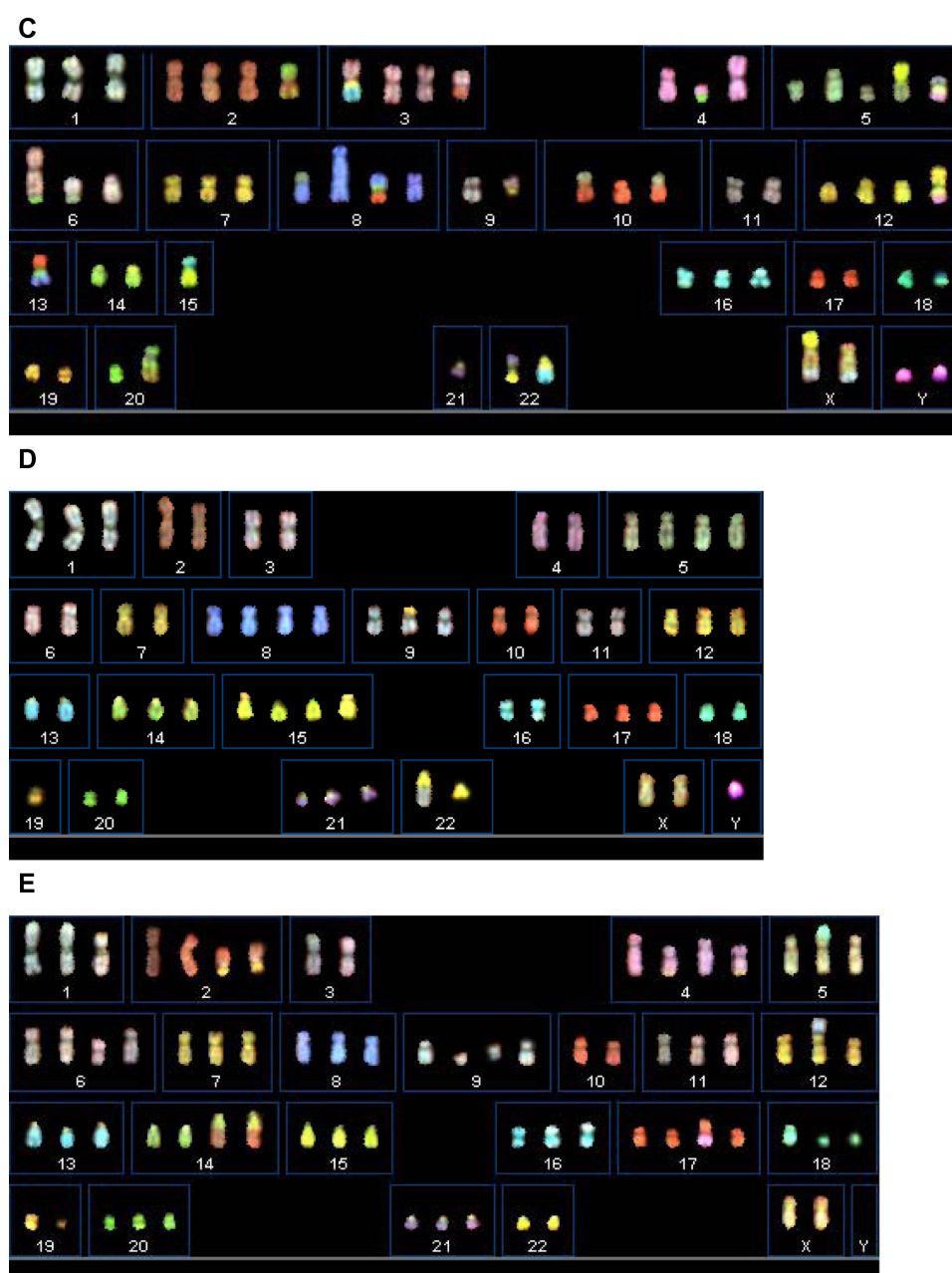
### Oncogenic molecular profiling

Out of 142 cancer genes profiled with RainDance OncoSeq, 42 gene variants representing variants in 27 genes were identified in different cell lines (Table 3). With the SIFT<sup>17,18</sup> and PROVEAN<sup>19</sup> softwares, detected variants were predicted to have damaging/deleterious or tolerated/neutral effects on the resulting protein structure or functions. We also examined the list for mutations that had been reported in the COSMIC database (v69).

Two *STK11/P* variants (serine/threonine kinase 11 interacting protein, NM\_052902: exon15: c.G1687A: p.V563I) with predicted deleterious effects were found in FA34 and FA44. *BLM* (Bloom syndrome, RecQ helicase-like, NM\_000057: exon11: c.C2371T: p.R791C), *RECQL4* (NM\_004260: exon5: c.G1060A: p.V354I), and *ERBB2*



**Figure 7** (Continued)



**Figure 7** Spectral karyotyping images of all the cell lines.

**Notes:** (A) FA34; (B) FA44; (C) FA49; (D) FA98; and (E) PME1.

(NM\_004448: exon27: c.C3508G: p.P1170A) variants were found in FA34 alone. An *ATM* variant (*ATM* serine/threonine kinase, NM\_000051: exon6: c.G566A: p.R189K) with potential deleterious effects was found in FA44, together with a tolerated variant of *EGFR* at exon 13 (NM\_005228: exon13: c.G1562A: p.R521K), and *FLT3* (*fms*-related tyrosine kinase 3, NM\_004119: exon6: c.C680T: p.T227M), and another variant of *ERBB2* was found at the same genetic locus as in FA34 above. A *Notch1* variant (NM\_017617: exon11: c.A1762C: p.T588P) was found in FA98. A *WRN*

variant (Werner syndrome, RecQ helicase-like, NM\_000553: exon26: c.G3222T: p.L1074F) was found in PME1.

## Discussion

The five lung adenocarcinoma and mesothelioma cell lines were newly established from lung cancer and mesothelioma patients with advanced-stage disease, and each of them carries their respective oncogenic driver mutation, including two new lung adenocarcinoma cell lines with two different *KRAS* mutations at codon 12, and one new lung

**Table 2** Karyotype descriptions in newly established lung cancer cells lines analyzed using spectral karyotyping

Cell lines	Karyotype
FA34	90–96<4n>, XXXX, +del(X)(p1?), +del(X)(q2?), +der(X)t(X;14)(p22.3;q11)t(X;18)(q28:?), der(1)t(1;17)(p2?:?)t(14;17)(?:?), del(1)(q2?), del(1)(q3?), +del(2)(q14), –3, der(3)t(3;14)(p11;q?:?)t(3;13)(q26;q?), +der(4)t(1;4)(p11;q11)×2, +der(4)t(1;4)(?:p12)t(1;4)(q11;q13), +der(4;5)(p10;p10), –6, +der(7)t(7;8)(p11;p11), der(8;18)(q10;p10)×2, –9, del(9)(q3?), der(9)t(9;19)(p11;p11)del(9)(q3?)×2, del(10)(p11)dup(10)(q?), der(10)t(1;10)(?:q26), +i(11)(q10), +der(11)t(1;11)(p11;q11), –12, der(12)t(4;12)(q?:p13)t(12;17)(q24.3:?), –13, –13, i(14)(q10), der(14)t(11;14)(q12;p13), der(15)t(15;20)(p11:?), +der(16)t(11;16)(p11;p11), –17, +der(18)t(17;18)(q12;p11.3), –19, del(19)(p11), –21, –21[cp30]
FA44a	68–75<3n>, XXY, +dic(1;19)(p11;q13.4), +der(1)t(1;4)(p11;q11), +2, +4, der(4;5)(p10;p10), +5, +der(5)t(5;15)(q2?:q1?), –6, +der(7)t(7;17)(q3?:q?), der(8)t(7;8)(?:q2?), +9, der(9)t(8;9)(q?:q34)dup(8)(q?), der(9)t(8;9)(?:p24)t(9;10)(q3?:q11), –10, 11, der(12)t(8;12)(q11;p11), der(12)t(12;13)(p1?:q2?)t(8;12)(q?:q2?)dup(8)(q?), –13, –13, –15, der(10;15)(q10;q10), +der(17)t(12;17)(q?:p1?)t(12;17)(q?:?), del(18)(p11), der(18)t(11;18)(?:p11.3), –19, del(19)(p11), +22, der(22)t(19;22)(?:p11), der(22)t(5;22)(?:p11), der(22)t(11;22)(?:p11), i(22)(q10)[cp27]
FA49	60–65<3n>, der(X)t(X;15)(p11;q1?)t(X;9)(q2?:p11), der(X)t(X;9)(q2?:p11), Y, +Y, der(2)t(2;14)(p1?:q2?)t(2;7)(q2?:?), +3, der(3)t(3;15)(q11;q?:?)t(13;15)(q1?:q?), der(3;17)(p10;q10), der(4)t(4;20)(q11:?), i(4)(q10), +del(5)(q12)×2, der(5;15)(q10;q10), der(5)t(5;22)(q11;q?:?)t(4;22)(q?:q?), der(6)t(6;20)(q27:?), der(6;11)(p10;p10), del(6)(p12), +8, der(8;11)(q10;p10), dup(8)(q?), der(8)t(8;13)(q11;q?:?)t(13;17)(q?:q11), –9, der(9)t(9;12)(q11:?), +10, der(10)t(7;10)(p11;p11)×2, +12, del(12)(p11), der(12)t(12;22)(p13;q12)t(12;21)(q13;q21), –13, –13, der(13)t(10;13)(q12;p11)t(8;13)(q21;q13), –14, –15, der(15;18)(q10;q10), –17, del(18)(q12), –19, –20, der(20)t(7;20)(q36;q21), –21, –22, der(21;22)(q10;q10), der(22)t(13;22)(q21;q13)[cp25]
FA98	58–62<3n>, XXY, i(1)(q10), –2, –3, –4, +5, –6, –7, +8, der(9;22)(q10;q10), –10, –11, –13, +15, der(15;19)(q10;p10)×2, –16, –18, –20, der(22)t(9;22)(q11;q13)[cp30]
PME1	68–74<3n>, XX, –Y, del(1)(p31), der(2;19)(p10;q10), –3, +4, der(4)t(4;9)(q2?:?)×2, der(5)t(5;18)(p15;q12), +i(6)(p10), +9, del(9)(q12)×2, –0, der(12)t(9;12)(q11;p13), del(13)(q?), +14, der(14)t(2;14)(q22;q32)×2, +der(17)t(Y;17)(q12;q24), del(18)(q11)×2, del(19)(p11)del(19)(q11), der(19)t(2;19)(p12;p13), –22[cp30]

adenocarcinoma cell line with *EML4-ALK* translocation. All the new adenocarcinoma cell lines were CK7 and TTF1 positive on immunohistochemical staining and at the same time CK20 negative, which is the typical immunohistochemical profile for lung adenocarcinoma. The combination of TTF1- and napsin A-positive staining has been shown to give a sensitivity of 79.2% in demonstrating cells of primary lung adenocarcinoma origin.<sup>21</sup> The mesothelioma cell line was in addition stained positive for anti-vimentin and calretinin, again the typical immunohistochemical profile for mesothelioma cells.

FA44 and FA98 showed a shorter initial lag phase and they formed confluent cell layers, while FA34 and PME1 displayed tumor cell aggregation. The tendency for tumor cells to form clusters is apparently not associated with tumorigenicity in nude mice, as all four lung adenocarcinomas but not the mesothelioma cell line resulted in formation of tumor xenografts in nude mice (Table 1).

*ALK* rearrangement variant 2 was found in FA34 which originated from a young lady, who was a nonsmoker, with lung adenocarcinomas with metastatic pleural effusion that demonstrated no response to multiple lines of systemic chemotherapy and EGFR-TKI. At the time of presentation, crizotinib was not yet available, so had not been considered. Lung adenocarcinoma cell lines bearing *EML4-ALK* rearrangement were seldom found in the literature and the more-commonly used ones were NCI-H3122 and DFCI032.<sup>22</sup> *EML4-ALK* rearrangement was reported to be more-commonly found in young

patients, especially nonsmokers, with lung adenocarcinoma.<sup>20</sup> The FA34 *ALK* rearranged lung adenocarcinoma cell line reported in this study will be useful available material for further study of *EML4-ALK* translocated lung adenocarcinomas of Chinese origin for further study in the biology and drug response for *EML4-ALK* lung cancer.

Two different *KRAS* mutations at codon 12 were found in two lung adenocarcinoma cell lines, FA44 and FA49. These two cell lines were derived from male smokers, and were the typical subtype of lung adenocarcinomas for smokers who were not responsive to platinum-based chemotherapy. *KRAS* mutant lung cancer cell lines were found in the NCI-H series, namely H23, H358, H441, and H1792, which all bear codon 12 mutations.<sup>23</sup> The two newly established lines in this report, FA44 and FA49, would add further available lung adenocarcinoma cell lines of Chinese origin for further in vitro study into the understanding of *KRAS* mutant lung cancer.

Each of the cell lines showed complex structural chromosomal aberrations, yet shared no common structural exchanges (derivative chromosomes), indicating the complex nature of chromosome aberrations in cancer development. However, losses or partial deletions of chromosome 13 were observed in all five cancer cell lines. Chromosome 13 is known to harbor *RBI*, a tumor suppressor gene, the deletion of which may contribute to tumor growth in lung cancer.<sup>24</sup> The composite karyotypes (indicated by “cp” at the ends of descriptions) of the cell lines suggest the high levels of genomic instability of the cell lines.



**Table 3** Summary of mutations of the five cell lines analyzed with targeted sequencing (RainDance OncoSeq)

Chr	Position (hg19)	Ref/Alt alleles	dbSNP ID	Gene	Amino acid change	FA34	FA44	FA49	FA98	PMEI	PROVEAN Prediction	SIFT Prediction	COSMIC v69
1	3,328,358	T/C	rs870124	PRDM16	NM_022114: exon9: c.T1597C: p.S533P	CC	CC	CC	CC	CC	Neutral	Tolerated	N
2	29,416,572	T/C	rs1670283	ALK	NM_004304: exon29: c.A4381G: p.I1461V	CC	CC	CC	CC	CC	Neutral	Tolerated	N
2	220,462,640	G/T	rs681747	STK11IP	NM_052902: exon1: c.G2T: p.R1M	TT	TT	TT	TT	TT	Neutral	Damaging	N
2	220,473,355	G/A	rs673951	STK11IP	NM_052902: exon15: c.G1687A: p.V563I	GA	GG	AA	AA	AA	Neutral	Tolerated	N
2	220,476,443	C/T	rs627530	STK11IP	NM_052902: exon18: c.C2255T: p.S752F	TT	TT	TT	TT	TT	Neutral	Tolerated	N
3	14,187,449	G/T	rs2228001	XPC	NM_001145769: exon16: c.C2704A: p.Q902K	TT	TT	TT	TT	TT	Neutral	Tolerated	N
3	14,199,887	G/A	rs2228000	XPC	NM_001145769: exon9: c.C1385T: p.A462V	AA	GA	AA	GA	AA	Neutral	Tolerated	N
5	12,176,756	T/A	rs459552	APC	NM_001127511: exon14: c.T5411A: p.V1804D	AA	AA	TA	AA	TA	Neutral	Tolerated	N
7	2,968,245	C/T	rs75403455	CARD11	NM_032415: exon13: c.G1741A: p.A581T	CT	CC	CC	CC	CC	Neutral	Tolerated	Y
7	55,229,255	G/A	rs2227983	EGFR	NM_005228: exon13: c.G1562A: p.R521K	GA	GG	GA	AA	AA	Neutral	Tolerated	N
8	30,999,280	G/T	rs1801195	WRN	NM_000553: exon26: c.G3222T: p.L1074F	TT	TT	TT	TT	GG	Neutral	Tolerated	N
8	145,737,816	C/T	rs4251691	RECQL4	NM_004260: exon18: c.G3014A: p.R1005Q	CT	CC	CC	CT	CC	N/A	N/A	Y
8	145,741,443	C/T	N/A	RECQL4	NM_004260: exon5: c.G1060A: p.V354I	CT	CC	CC	CC	CC	N/A	N/A	N
8	145,741,702	C/G	rs4244612	RECQL4	NM_004260: exon5: c.G801C: p.E267D	CG	CC	CG	CG	CC	N/A	N/A	N
8	145,742,514	A/G	rs2721190	RECQL4	NM_004260: exon4: c.T274C: p.S92P	GG	AG	GG	GG	AG	N/A	N/A	N
9	139,410,076	T/G	N/A	NOTCH1	NM_017617: exon11: c.A1762C: p.T588P	TG	TG	TG	TT	TG	Deleterious	Damaging	N
9	139,410,120	T/G	N/A	NOTCH1	NM_017617: exon11: c.A1718C: p.D573A	TG	TG	TT	TT	TG	Deleterious	Tolerated	N
9	139,413,211	T/G	N/A	NOTCH1	NM_017617: exon6: c.A931C: p.T311P	TG	TG	TG	TT	TT	Deleterious	Damaging	N
11	108,114,749	G/A	rs79075295	ATM	NM_000051: exon6: c.G566A: p.R189K	GA	GG	GA	GA	GA	Neutral	Damaging	Y
11	108,183,167	A/G	rs659243	ATM	NM_000051: exon40: c.A5948G: p.N1983S	GG	GG	GG	GG	GG	Neutral	Tolerated	N
13	28,537,317	G/A	rs1805107	CDX2	NM_001265: exon3: c.C877T: p.P293S	AA	AA	AA	GG	GG	Neutral	Tolerated	N
13	28,624,294	G/A	rs1933437	FLT3	NM_004119: exon6: c.C680T: p.T227M	AA	GA	AA	AA	AA	Neutral	Tolerated	N
13	32,906,729	A/C	rs144848	BRCA2	NM_000059: exon10: c.A1114C: p.N372H	CC	CC	AA	AA	AA	Neutral	Tolerated	Y
14	75,513,883	T/C	rs175081	MLH3	NM_001040108: exon2: c.A2476G: p.N826D	CC	CC	CC	CC	CC	Neutral	Tolerated	N
15	40,477,831	G/A	rs1801376	BUB1B	NM_001211: exon8: c.G1046A: p.R349Q	GA	AA	GA	GG	AA	Neutral	Tolerated	N
15	74,328,116	A/G	rs743580	PML	NM_033250: exon7: c.A2170G: p.S724G	AG	AA	AA	GG	AG	Neutral	Tolerated	N
15	74,328,141	G/T	rs743581	PML	NM_033250: exon7: c.G2195T: p.G732V	GT	GG	GG	GG	GG	Neutral	Tolerated	N
15	91,312,426	C/T	rs55880859	BLM	NM_000057: exon11: c.C2371T: p.R791C	CT	CC	CC	CC	CC	Deleterious	Damaging	N
16	3,860,746	T/G	N/A	GREBBP	NM_001079846: exon3: c.A833C: p.Q278P	TG	TT	TT	TT	TT	Neutral	Tolerated	N
16	15,841,509	G/T	N/A	MYH11	NM_002474: exon19: c.C2329A: p.H777N	GT	GG	GG	GG	GG	Deleterious	Tolerated	N
16	23,646,942	T/C	rs3809683	PALB2	NM_024675: exon4: c.A925G: p.I309V	TC	TT	TT	TT	TT	Neutral	Tolerated	N
16	27,448,894	A/C	N/A	IL21R	NM_021798: exon4: c.A238C: p.T80P	AC	AA	AC	AC	AA	Deleterious	Damaging	N
16	89,838,136	T/C	rs56369086	FANCA	NM_000135: exon23: c.A2101G: p.K701E	TC	TT	TT	TT	TT	Neutral	Tolerated	N
16	89,849,480	C/T	rs2239359	FANCA	NM_000135: exon16: c.G1501A: p.G501S	TT	CT	TT	CT	TT	Neutral	Tolerated	N
16	89,866,043	T/C	rs7190823	FANCA	NM_000135: exon9: c.A796G: p.T266A	CC	CC	CC	CC	CC	Neutral	Tolerated	N
17	37,884,037	C/G	rs1058808	ERBB2	NM_004448: exon27: c.C3508G: p.P1170A	GG	CG	CC	CC	CC	Neutral	Damaging	N
17	41,223,094	T/C	rs1799966	BRCA1	NM_007297: exon14: c.A4696G: p.S1566G	CC	TC	TC	TC	CC	Neutral	Tolerated	N
17	41,244,000	T/C	rs16942	BRCA1	NM_007297: exon9: c.A3407G: p.K1136R	CC	TC	TC	TC	CC	Neutral	Tolerated	Y
17	41,244,435	T/C	rs16941	BRCA1	NM_007297: exon9: c.A2972G: p.E991G	CC	TC	TC	TC	CC	Deleterious	Damaging	N
17	41,244,936	G/A	rs799917	BRCA1	NM_007297: exon9: c.C2471T: p.P824L	AA	GA	GA	GA	AA	Neutral	Tolerated	Y
17	59,763,347	A/G	rs4986764	BRPI	NM_032043: exon19: c.T2755C: p.S919P	GG	GG	GG	GG	GG	Neutral	Tolerated	N
17	63,533,087	C/G	rs145353986	AXIN2	NM_004655: exon7: c.G1807C: p.A603P	GG	GG	CC	CC	CC	Neutral	Tolerated	N

**Note:** Only mutations predicted to affect the protein coding sequences are listed.**Abbreviations:** Chr, chromosome; dbSNP ID, database of SNP identification; N, no; N/A, not applicable; Ref/Alt, reference/alternate; Y, yes.

Among the 42 genes with mutation or SNP identified from the RainDance OncoSeq panel, there were genes commonly found to be mutated/variant in lung cancer while some other mutant/variants could be the characteristics of individual cancer cell lines. We used the SIFT<sup>17,18</sup> and PROVEAN<sup>19</sup> softwares to predict whether these mutations could give rise to damaging or deleterious effects to the resultant expression.

*Notch1* was found to be a variant in FA49, FA98, and PME1. *Notch1* is believed to control cell proliferation and apoptosis. *Notch1* upregulation and expression were found to have inhibitory effects on tumor cell growth in adenocarcinoma cells.<sup>25</sup> The growth of mesothelioma cells has been shown to be affected by aberrant *Notch1* signaling.<sup>26</sup> The two adenocarcinoma cell lines, FA49 and FA98, as well as PME1 in the mesothelioma cell line, possess variants in *Notch1* and could be used as an in vitro model to further study the role of *Notch1* in lung adenocarcinoma and mesothelioma cell growth.

*STK11/P* (or *LKB1*) was found to be mutated in all five cancer cell lines. *LKB1* is known to be a tumor suppressor gene that encodes for a serine/threonine kinase, which is involved in the adenosine monophosphate-dependent protein kinase (AMPK) pathways for the regulation of intracellular energy level.<sup>27</sup> Mutation or variants of *LKB1* have been reported in genomic studies on lung cancers, and the presence of *LKB1* mutation may cause dysregulation of these AMPK pathways and thus could result in disinhibition of energy-consuming anabolic processes and eventually promote tumor growth.<sup>28,29</sup> *AXIN2* is another known tumor suppressor gene on the Wnt/ $\beta$ -catenin pathway and a variant (NM\_004655: exon7: c.G1807C: p.A603P) was found in both FA34 and FA98. *AXIN2* polymorphism was reported to be associated with risk of developing lung cancer, at least in Japanese<sup>30</sup> and Turkish groups.<sup>31</sup>

Two different *ERBB2* variants were found in FA34 and FA44, whereas an *EGFR* variant was also present in FA44. Both *EGFR* and *ERBB2* (also known as *HER2/neu*) belong to the same family of *erbB* receptor tyrosine kinases. Both *ERBB2* gene (which encodes for *HER2*) and *EGFR* mutation at exons 18–21 are major proliferative drivers that activate downstream growth signaling pathways.<sup>32</sup> However, the *ERBB2* variants were found at exon 27, which differs from the mutations at exon 20 that have been found to correlate with clinical characteristics and therapeutic response;<sup>33</sup> the same for *EGFR* mutation at exon 13 in this study, which was different from the usual region of mutations within exons 18–21.<sup>32</sup>

*ATM* protein plays a role in the DNA damage response signaling pathway.<sup>34</sup> It acts as a link between DNA damage, cell cycle progression, and cell death.<sup>34</sup> FA44 was found to carry *ATM* mutation and thus could be a cell line model for in vitro drug testing and targeting.<sup>35</sup>

*BLM* and *RECQL4* were found to be variants in FA34. Both *BLM* and *RECQL4* encode for RecQ helicase which is important for the proper maintenance of telomere length.<sup>36</sup> *IL21R* (interleukin 21 receptor, NM\_021798: exon4: c.A238C: p.T80P) was another variant found among these newly established cell lines. Aberrant *IL21R* may interfere with the action of *IL21*, which itself could be tumor suppressive.<sup>37,38</sup>

A *BRCA1* variant (breast cancer 1, early onset, NM\_007297: exon9: c.A2972G: p.E991G) with potential deleterious effects was found in FA34 and PME1. *BRCA1* is known to be involved not only in breast cancer but also in lung cancer, where it has been found to be associated with smoking status, histological features, as well as sensitivity towards platinum-based chemotherapy.<sup>39</sup>

Mutations in MPM are thought to be scant, are seldom identified to be of significant functional implication, and are mostly believed to be epigenetic oncogenic changes.<sup>40,41</sup> In PME1, however, we did identify *WRN\_ENREF\_33* mutations or SNP, which may represent the scant oncogenic genomic changes in mesothelioma.<sup>42</sup>

Although the panel of RainDance OncoSeq was limited to the detection of genetic variants/mutations in a panel of 140 known oncogenic mutations, it served as a screening tool for potential oncogenic targets within those cancer cell lines. The molecular profiles identified in this study shared similarity as well as difference with recent molecular landscapes identified by next-generation sequencing. *EGFR*, *KRAS*, and *STK11/P* have been identified to be commonly variant in cytological specimens of lung adenocarcinomas<sup>43</sup> and in lung adenocarcinoma tissue (*STK11/P* and *ATM*).<sup>44</sup> Mutations of all these potential therapeutic oncology targets – namely *ALK* rearrangement, *KRAS* mutations, *ERBB2*, *Notch1*, *BRCA1*, *BLM*, and related *RecQL4*, *IL-21R*, *STK11/P*, and *ATM* – were reported in various frequencies in lung cancer before.<sup>45,46</sup> This demonstrated the representativeness of these new lung cancer and mesothelioma cell lines and their potential usefulness for therapeutic drug testing.

In summary, we have established four new primary lung adenocarcinoma cell lines and one new malignant mesothelioma cell line from Chinese patients with different clinical characteristics, cell culture properties, and oncogenic mutation profiles. These new cancer cell lines could add

to the present pools of publicly available lung cancer and mesothelioma cell lines, the majority of which were derived from patients of non-Asian origin, serving as potentially useful tools for functional studies and drug sensitivity testing in lung cancer and malignant mesothelioma.

## Acknowledgments

The work described in this paper was supported in part by the Lee Wing Tat Cardio-thoracic Medicine Education and Research Fund 2008 – 2010, the Hong Kong SK Yee Medical Foundation 2010 (Project no. 210210, for *EGFR* and *KRAS* mutation tests) and 2012 (Project no. 212207, for *ALK* rearrangement test), the Shun Tak District Min Yuen Tong of Hong Kong 2012, and the Hong Kong Pneumoconiosis Compensation Fund Board Research Grant 2013.

## Disclosure

The authors report no conflicts of interest in this work.

## References

- DeSantis CE, Lin CC, Mariotto AB, et al. Cancer treatment and survivorship statistics, 2014. *CA Cancer J Clin*. 2014;64(4):252–271.
- Larsen JE, Minna JD. Molecular biology of lung cancer: clinical implications. *Clin Chest Med*. 2011;32(4):703–740.
- Brownson RC, Chang JC, Davis JR. Gender and histologic type variations in smoking-related risk of lung cancer. *Epidemiology*. 1992;3(1):61–64.
- Zang EA, Wynder EL. Differences in lung cancer risk between men and women: examination of the evidence. *J Natl Cancer Inst*. 1996; 88(3–4):183–192.
- Pao W, Girard N. New driver mutations in non-small-cell lung cancer. *Lancet Oncol*. 2011;12(2):175–180.
- Nebhan C, Pao W. Further advances in genetically informed lung cancer medicine. *J Thorac Oncol*. 2013;8(5):521–522.
- Lam DC, Girard L, Suen WS, et al. Establishment and expression profiling of new lung cancer cell lines from Chinese smokers and lifetime never-smokers. *J Thorac Oncol*. 2006;1(9):932–942.
- Oie HK, Russell EK, Carney DN, Gazdar AF. Cell culture methods for the establishment of the NCI series of lung cancer cell lines. *J Cell Biochem Suppl*. 1996;24:24–31.
- Tam IY, Chung LP, Suen WS, et al. Distinct epidermal growth factor receptor and *KRAS* mutation patterns in non-small cell lung cancer patients with different tobacco exposure and clinicopathologic features. *Clin Cancer Res*. 2006;12(5):1647–1653.
- de Figueiredo-Pontes LL, Wong DW, Tin VP, et al. Identification and characterization of *ALK* kinase splicing isoforms in non-small-cell lung cancer. *J Thorac Oncol*. 2014;9(2):248–253.
- Deng W, Tsao SW, Lucas JN, Leung CS, Cheung AL. A new method for improving metaphase chromosome spreading. *Cytometry A*. 2003;51(1):46–51.
- Shaffer LG, Slovak ML, Campbell LJ, editors. *An international system for human cytogenetic nomenclature (2009)*. Basel; Unionville, CT: Karger; 2009.
- Li H, Durbin R. Fast and accurate long-read alignment with Burrows-Wheeler transform. *Bioinformatics*. 2010;26(5):589–595.
- Garrison E, Marth G. Haplotype-based variant detection from short-read sequencing. *arXiv:1207.3907 [q-bio.GN]*. 2012.
- Wang K, Li M, Hakonarson H. ANNOVAR: functional annotation of genetic variants from high-throughput sequencing data. *Nucleic Acids Res*. 2010;38(16):e164.
- Goecks J, Nekrutenko A, Taylor J; Galaxy Team. Galaxy: a comprehensive approach for supporting accessible, reproducible, and transparent computational research in the life sciences. *Genome Biol*. 2010;11(8):R86.
- Kumar P, Henikoff S, Ng PC. Predicting the effects of coding non-synonymous variants on protein function using the SIFT algorithm. *Nat Protoc*. 2009;4(7):1073–1081.
- Sim NL, Kumar P, Hu J, Henikoff S, Schneider G, Ng PC. SIFT web server: predicting effects of amino acid substitutions on proteins. *Nucleic Acids Res*. 2012;40(Web Server issue):W452–W457.
- Choi Y, Sims GE, Murphy S, Miller JR, Chan AP. Predicting the functional effect of amino acid substitutions and indels. *PLoS One*. 2012;7(10):e46688.
- Soda M, Choi YL, Enomoto M, et al. Identification of the transforming *EML4-ALK* fusion gene in non-small-cell lung cancer. *Nature*. 2007;448(7153):561–566.
- Ye J, Findeis-Hosey JJ, Yang Q, et al. Combination of napsin A and TTF-1 immunohistochemistry helps in differentiating primary lung adenocarcinoma from metastatic carcinoma in the lung. *Appl Immunohistochem Mol Morphol*. 2011;19(4):313–317.
- Koivunen JP, Mermel C, Zejnullahu K, et al. *EML4-ALK* fusion gene and efficacy of an *ALK* kinase inhibitor in lung cancer. *Clin Cancer Res*. 2008;14(13):4275–4283.
- Sunaga N, Shames DS, Girard L, et al. Knockdown of oncogenic *KRAS* in non-small cell lung cancers suppresses tumor growth and sensitizes tumor cells to targeted therapy. *Mol Cancer Ther*. 2011;10(2):336–346.
- Kelley MJ, Nakagawa K, Steinberg SM, Mulshine JL, Kamb A, Johnson BE. Differential inactivation of *CDKN2* and *Rb* protein in non-small-cell and small-cell lung cancer cell lines. *J Natl Cancer Inst*. 1995;87(10):756–761.
- Wael H, Yoshida R, Kudoh S, Hasegawa K, Niimori-Kita K, Ito T. Notch1 signaling controls cell proliferation, apoptosis and differentiation in lung carcinoma. *Lung Cancer*. 2014;85(2):131–140.
- Graziani I, Elias S, De Marco MA, et al. Opposite effects of Notch-1 and Notch-2 on mesothelioma cell survival under hypoxia are exerted through the Akt pathway. *Cancer Res*. 2008;68(23):9678–9685.
- Conde E, Suarez-Gauthier A, García-García E, et al. Specific pattern of *LKB1* and phospho-acetyl-CoA carboxylase protein immunostaining in human normal tissues and lung carcinomas. *Hum Pathol*. 2007;38(9):1351–1360.
- Liu Y, Marks K, Cowley GS, et al. Metabolic and functional genomic studies identify deoxythymidylate kinase as a target in *LKB1*-mutant lung cancer. *Cancer Discov*. 2013;3(8):870–879.
- Shackelford DB, Abt E, Gerken L, et al. *LKB1* inactivation dictates therapeutic response of non-small cell lung cancer to the metabolism drug phenformin. *Cancer Cell*. 2013;23(2):143–158.
- Kanzaki H, Ouchida M, Hanafusa H, et al. Single nucleotide polymorphism of the *AXIN2* gene is preferentially associated with human lung cancer risk in a Japanese population. *Int J Mol Med*. 2006;18(2):279–284.
- Gunes EG, Pinarbasi E, Pinarbasi H, Silig Y. Strong association between lung cancer and the *AXIN2* polymorphism. *Mol Med Rep*. 2009;2(6):1029–1035.
- Siegelin MD, Boreczuk AC. Epidermal growth factor receptor mutations in lung adenocarcinoma. *Lab Invest*. 2014;94(2):129–137.
- Mazieres J, Peters S, Lepage B, et al. Lung cancer that harbors an *HER2* mutation: epidemiologic characteristics and therapeutic perspectives. *J Clin Oncol*. 2013;31(16):1997–2003.
- Khalil HS, Tummala H, Hupp TR, Zhelev N. Pharmacological inhibition of ATM by KU55933 stimulates ATM transcription. *Exp Biol Med (Maywood)*. 2012;237(6):622–634.
- Storozhuk Y, Hopmans SN, Sanli T, et al. Metformin inhibits growth and enhances radiation response of non-small cell lung cancer (NSCLC) through ATM and AMPK. *Br J Cancer*. 2013;108(10):2021–2032.
- Rezazadeh S. On *BLM* helicase in recombination-mediated telomere maintenance. *Mol Biol Rep*. 2013;40(4):3049–3064.
- Spolski R, Leonard WJ. Interleukin-21: basic biology and implications for cancer and autoimmunity. *Annu Rev Immunol*. 2008;26:57–79.



38. Sondergaard H, Coquet JM, Uldrich AP, et al. Endogenous IL-21 restricts CD8+ T cell expansion and is not required for tumor immunity. *J Immunol.* 2009;183(11):7326–7336.
39. Bonanno L, Favaretto A, Rosell R. Platinum drugs and DNA repair mechanisms in lung cancer. *Anticancer Res.* 2014;34(1):493–501.
40. Tallet A, Nault JC, Renier A, et al. Overexpression and promoter mutation of the TERT gene in malignant pleural mesothelioma. *Oncogene.* 2014;33(28):3748–3752.
41. Kobayashi M, Takeuchi T, Ohtsuki Y. Establishment of three novel human malignant pleural mesothelioma cell lines: morphological and cytogenetical studies and EGFR mutation status. *Anticancer Res.* 2008;28(1A):197–208.
42. Korhonen MK, Vuorenmaa E, Nyström M. The first functional study of MLH3 mutations found in cancer patients. *Genes Chromosomes Cancer.* 2008;47(9):803–809.
43. Scarpa A, Sikora K, Fassan M, et al. Molecular typing of lung adenocarcinoma on cytological samples using a multigene next generation sequencing panel. *PLoS One.* 2013;8(11):e80478.
44. Imielinski M, Berger AH, Hammerman PS, et al. Mapping the hallmarks of lung adenocarcinoma with massively parallel sequencing. *Cell.* 2012;150(6):1107–1120.
45. Greulich H. The genomics of lung adenocarcinoma: opportunities for targeted therapies. *Genes Cancer.* 2010;1(12):1200–1210.
46. Ding L, Getz G, Wheeler DA, et al. Somatic mutations affect key pathways in lung adenocarcinoma. *Nature.* 2008;455(7216):1069–1075.

### OncoTargets and Therapy

## Publish your work in this journal

OncoTargets and Therapy is an international, peer-reviewed, open access journal focusing on the pathological basis of all cancers, potential targets for therapy and treatment protocols employed to improve the management of cancer patients. The journal also focuses on the impact of management programs and new therapeutic agents and protocols on

Submit your manuscript here: <http://www.dovepress.com/oncotargets-and-therapy-journal>

patient perspectives such as quality of life, adherence and satisfaction. The manuscript management system is completely online and includes a very quick and fair peer-review system, which is all easy to use. Visit <http://www.dovepress.com/testimonials.php> to read real quotes from published authors.

Dovepress