

Exposure–response model for sibutramine and placebo: suggestion for application to long-term weight-control drug development

Seunghoon Han^{1,2}Sangil Jeon^{1,2}Taegon Hong^{1,2}Jongtae Lee^{1,2}Soo Hyeon Bae^{1,2}Wan-su Park^{1,2}Gab-jin Park^{1,2}Sunil Youn^{1,2}Doo Yeon Jang^{1,2}Kyung-Soo Kim³Dong-Seok Yim^{1,2}¹Department of Pharmacology,
College of Medicine, The

Catholic University of Korea,

²Pharmacometrics Institute for
Practical Education and Training,³Department of Family Medicine,
Seoul St Mary's Hospital, Seochogu,
Seoul, Republic of Korea

Abstract: No wholly successful weight-control drugs have been developed to date, despite the tremendous demand. We present an exposure–response model of sibutramine mesylate that can be applied during clinical development of other weight-control drugs. Additionally, we provide a model-based evaluation of sibutramine efficacy. Data from a double-blind, randomized, placebo-controlled, multicenter study were used (N=120). Subjects in the treatment arm were initially given 8.37 mg sibutramine base daily, and those who lost <2 kg after 4 weeks' treatment were escalated to 12.55 mg. The duration of treatment was 24 weeks. Drug concentration and body weight were measured predose and at 4 weeks, 8 weeks, and 24 weeks after treatment initiation. Exposure and response to sibutramine, including the placebo effect, were modeled using NONMEM 7.2. An asymptotic model approaching the final body weight was chosen to describe the time course of weight loss. Extent of weight loss was described successfully using a sigmoidal exposure–response relationship of the drug with a constant placebo effect in each individual. The placebo effect was influenced by subjects' sex and baseline body mass index. Maximal weight loss was predicted to occur around 1 year after treatment initiation. The difference in mean weight loss between the sibutramine (daily 12.55 mg) and placebo groups was predicted to be 4.5% in a simulation of 1 year of treatment, with considerable overlap of prediction intervals. Our exposure–response model, which included the placebo effect, is the first example of a quantitative model that can be used to predict the efficacy of weight-control drugs. Similar approaches can help decision-making during clinical development of novel weight-loss drugs.

Keywords: weight-reducing drugs, obesity, pharmacokinetics, pharmacodynamics

Introduction

Pharmaceutical companies have made numerous attempts over several decades to develop weight-control drugs because obesity is a major health problem that is increasing in prevalence in many countries.^{1–3} Unfortunately, efforts thus far have not been completely successful; only orlistat remains prescribable after withdrawal of sibutramine due to its cardiovascular toxicity that was ruled to outweigh its clinical effectiveness in 2010.^{4,5} Recently, however, the limits to treatment duration with Belviq® (lorcaserin HCl) and Qsymia® (phentermine and topiramate extended release) were lifted by the US Food and Drug Administration to enable long-term prescription.

Nevertheless, because of the large market size, many pharmaceutical companies still believe that the production of weight-control drugs is promising and they have active weight loss drug development pipelines. By 2012, more than ten candidates were under clinical development with targeted approval as either monotherapy or combination drugs.⁶ However, judging from the failures in the past, we argue that the

Correspondence: Dong-Seok Yim
Department of Pharmacology, College
of Medicine, The Catholic University
of Korea, 222 Banpo-Daero, Seochogu,
Seoul 137-701, Republic of Korea
Tel +82 2 2258 7327
Fax +82 2 2258 7876
Email yimds@catholic.ac.kr

weight-control drug development process needs to be more productive and efficient. A learn-confirm paradigm based on exposure–response models^{7–9} may help, but have never been reported for weight-control drugs.

In this context, we provide an example of an exposure–response model that takes the placebo effect into account and describes the time course of weight reduction in response to drug treatment. We used existing data for sibutramine that were obtained in a clinical trial to assess the effect of a salt-replaced formulation of sibutramine (sibutramine mesylate), a centrally acting serotonin–norepinephrine reuptake inhibitor, on weight reduction in obese patients. Sibutramine was selected because the drug was the most widely used long-term weight-control drug in Korea until the time of withdrawal, which had relatively abundant clinical data and empirical reevaluation on the clinical effectiveness may be meaningful for the risk–benefit considerations on the withdrawal is still controversial.^{4,5} By doing so, we were to also exemplify the application of model for the prediction of clinical outcome using data from relatively short or small clinical trials.

Methods and procedures

Inclusion and exclusion criteria

Abdominal obesity (waist circumference ≥ 90 cm in men or ≥ 85 cm in women, by the Korean Society for the Study of Obesity) patients with metabolic syndrome according to the adult treatment panel (ATP) III definition, aged 18–65 years, without clinically significant hypertension, diabetes, or any underlying disease causing obesity were eligible for inclusion. Subjects taking any drugs that can affect body weight or the pharmacokinetic (PK) or pharmacodynamic (PD) properties of sibutramine were excluded. Finally, 120 subjects were enrolled (Table 1).

Study design

A double-blind, randomized, placebo-controlled, multicenter clinical study was conducted in eight hospitals (Seoul

St Mary's Hospital, Yeouido St Mary's Hospital, St Paul's Hospital, Uijeongbu St Mary's Hospital, St Vincent's Hospital, Daejeon St Mary's Hospital, Bucheon St Mary's Hospital, and Incheon St Mary's Hospital). The study had a parallel design with two arms and an equal number of subjects were initially allocated to each arm. The treatment arm received 11.51 mg sibutramine mesylate daily (equivalent to 8.37 mg sibutramine base, identical amount included in Reductil® 10 mg tablet as sibutramine hydrochloride monohydrate) for 4 weeks initially, and this dose was maintained if body weight decreased by ≥ 2 kg. If weight loss was insufficient (< 2 kg), the dose was escalated to 17.26 mg daily (equivalent to 12.55 mg sibutramine base and 15 mg sibutramine hydrochloride monohydrate) until study completion (24 weeks). This titration scheme was also applied to patients receiving placebo. Subjects' body weights were assessed every 4 weeks from the initiation of treatment until study completion. The trial was designed and monitored in accordance with the good clinical practice guidelines of Korea and with the principles of the Declaration of Helsinki. Independent institutional review boards at each study site approved the protocol before execution of the trial, and all participants provided written informed consent.

Study procedures

Subject control

All subjects maintained their usual exercise and physical activity during the study period. Dietary guidelines (500–600 kcal/day less than initial intake for each subject) were provided to subjects and the entire dietary intake was recorded using the 24-hour dietary recall method. Concomitant use of drugs that could affect the PK or PD of sibutramine, including any CYP3A4 inhibitors, cimetidine, monoamine oxidase inhibitors (MAO-Is), antidepressants, antidiabetics except biguanides, and other oral anorexics, was prohibited.

Blood sampling

Whole-blood samples were obtained for PK analysis. Samples consisting of 10 mL peripheral venous blood were collected into heparinized tubes just before the initial dose and the dose given at week 24. At weeks 4 and 8, single sampling (before noon at week 4, in the afternoon at week 8) was performed after drug administration in the morning, and the exact dosing and sampling times were recorded. Samples were immediately shaded and cooled in an ice bath. After centrifugation (3,000 rpm, 4°C, 10 minutes), 4 mL of plasma from each sample was stored in microtubes (1 mL each) at -20°C until assayed.

Table 1 Baseline demographic characteristics of enrolled subjects

	Sibutramine (N=60)	Placebo (N=57)	Total	P-value
Age (years)	38.0 \pm 7.36	39.3 \pm 9.38	38.7 \pm 8.39	0.4112
Sex ^a (male/female)	24/36	12/45	36/81	0.0265 ^b
Height (cm)	163.6 \pm 7.63	162.3 \pm 8.93	162.9 \pm 8.28	0.4107
Weight (kg)	82.2 \pm 10.2	82.2 \pm 13.9	82.2 \pm 12.11	0.9702
BMI (kg/m ²)	30.7 \pm 2.88	31.1 \pm 4.02	30.9 \pm 3.48	0.4838

Notes: ^aCategorical variable was assessed using chi-square test (all other variables were assessed using the t-test); ^bstatistically significant difference.

Abbreviation: BMI, body mass index.

Plasma concentration measurements

Plasma samples were analyzed using liquid chromatography coupled with tandem mass spectrometry (API 3200, ABSciex, Framingham, MA, USA) according to the method of Jain et al.¹⁰ Because sibutramine is an inactive prodrug that is rapidly converted through first-pass metabolism to its main active metabolites M1 (*N*-{1-[1-(4-chlorophenyl)cyclobutyl]-3-methylbutyl}-*N*-methylamine) and then M2 (1-[1-(4-chlorophenyl)cyclobutyl]-3-methylbutylamine) to exert its pharmacological activity,^{11–13} only the concentrations of M1 and M2 were measured. Quality control (QC) samples were prepared with nominal concentrations of 0.15 ng/mL, 2.5 ng/mL, 40 ng/mL M1 and 0.3 ng/mL, 2.5 ng/mL, and 40 ng/mL M2. Lower limit of quantification was 0.05 ng/mL for M1 and 0.1 ng/mL for M2. The correlation coefficients of calibration curves for M1 and M2 were 0.9996 and 0.9992, respectively. Intra- and interbatch precision (>10% coefficient of variation [CV]) and accuracy (90.9%–107.0%) were acceptable at all QC concentrations.

Model development

A mixed effect analysis was performed using NONMEM (version 7.2; Icon Development Solution, Ellicott City, MD, USA).

Dataset

The dataset for PK analysis basically consisted of the concentration observations from the clinical study (422 observations from 61 subjects – 211 for each metabolite). To facilitate PK model development, data from a previous full PK study (416 observations from 16 young healthy subjects – 208 for each metabolite) for the same formulation were added to the PK dataset to address the sparseness of our observations.¹⁴ Due to the heterogeneity of subjects included in the merged dataset, an indicator variable (ISP) to differentiate between patients and healthy subjects was used. This variable was then tested for its effect on PK and PD parameters like other covariates in the model-building process. For PD evaluation, all body weight measurements over the 24-week study period were used as dependent variables. Demographic characteristics (except body weight) of the subjects, such as height, body mass index (BMI), age, and sex (Table 1) as well as subject genotypes for 5-HT_{2C} receptor, 5-HT transporter, G protein β_3 , and α_2 -adrenoceptor were tested during model building.

Model building

PK models for sibutramine metabolites were built based on the metabolic pathway of sibutramine. Instead of sibutramine,

the inactive prodrug M1 was assumed to be given orally and converted to M2 thereafter. For each metabolite, one-compartment vs multicompartment models were compared. Drug disposition was assumed to follow first-order kinetics. Between-subject variability (BSV, η_i) to find individual parameters (P_i) in relation to population parameters for each PK and PD parameter was tested in the model building process, where the BSV (η_i) for each parameter followed a Gaussian distribution with a mean of 0 and different variance values (described using the symbol ω^2). A combined (ie, additive and proportional) error model was initially applied to describe the residual error, including intraindividual variability and measurement error, as follows:

$$DV_{ij} = DV_{ipred,ij} (1 + \varepsilon_{prop,ij}) + \varepsilon_{add,ij}$$

where DV_{ij} is the j th measured metabolite concentration in the i th individual, $DV_{ipred,ij}$ is the j th predicted value in the i th individual, and $\varepsilon_{prop,ij}$ and $\varepsilon_{add,ij}$ are the residual variability with means of 0 and variances of σ_{prop}^2 and σ_{add}^2 , respectively. Correlations between random variables in the model were explored using the \$COVARIANCE block. PD model was developed to describe the relationship between the sum of the estimated area under the concentration curve at steady state ($AUC_{ss,sum}$) of M1 and M2 from the PK model and weight loss as the drug effect. $AUC_{ss,sum}$ was calculated as follows:

$$AUC_{ss,M1} = \frac{\text{Dose}}{CL_{M1}}$$

$$AUC_{ss,M2} = \frac{\text{Dose}}{CL_{M2}}$$

$$AUC_{ss,sum} = AUC_{ss,M1} + AUC_{ss,M2}$$

where CL_{M1} and CL_{M2} are the clearance of M1 and M2, respectively. Final PD model was chosen after comparing several different drug and placebo effect models to explain the relationship between $AUC_{ss,sum}$ and body weight changes over time. BSV and residual error were included and the appropriateness of the model was evaluated using the same scheme as that used for the PK model.

As the next step, covariate analysis was performed using the basic PK–PD model built as described earlier. First, all demographic and genetic variables included in the dataset were screened visually and numerically. Visual screening was done via parameter versus covariate scatterplots and the numerical step used general additive modeling procedures. Variables selected from one of the screening steps were

included in the model and then we tested whether the model was significantly improved when a candidate covariate was assumed to have a certain relationship with any PK–PD parameter. A forward selection–backward elimination procedure was implemented with a significance level of 0.05.

First-order conditional estimation with interaction approximation method was chosen for all estimation processes. Appropriateness of models was evaluated comprehensively based upon various goodness-of-fit criteria, including visual comparison of diagnostic scatter plots, likelihood ratio tests, and measures of model stability or adequacy (ie, condition number, successful convergence, significant digits, matrix singularity). Likelihood ratio tests results were considered statistically significant if decreases in the objective function value were more than the cut-off points equivalent to a *P*-value of 0.05 (ie, 3.84 for *df*=1, 5.99 for *df*=2, etc).

Model evaluation and simulation

To evaluate parameter values obtained from the final model, bootstrap-resampled datasets (250 for the PK model and 500 for the PD model) from the original dataset were estimated sequentially, using the final PK and PD model. Ninety-percent confidence intervals (CIs, five percentile and 95 percentile) of parameters from this step were compared with the final parameter estimates. In addition, a visual predictive check using a total of 1,000 simulated datasets for time courses of weight change was performed. With this simulated data, 90% prediction intervals of body weight at each observation time were overlaid with the observed raw time-weighted data.

After we evaluated the robustness and predictive performance of the model, we performed a simulation study of 10,000 virtual subjects to predict drug efficacy at 1 year.

Results

Pharmacokinetic model

Distribution characteristics of M1 and M2 were described with a two-compartment and one-compartment model, respectively. Absorption of the parent drug and its turnover to M1 were explained using a single parameter (first-order absorption rate constant, k_a). M1 was assumed to be eliminated via metabolism to M2 only. Thus, elimination of the drug from the body was explained solely by the clearance of M2 (CL_{M2}). BSVs for each parameter were optimally explained when they were applied exponentially (eg, $\times \exp(\eta_i)$). For both metabolites, only a proportional error model was chosen to explain the discrepancy between individual predicted and observed concentrations. Age of subjects was the only significant covariate related with clearance of M1 (CL_{M1}) as per the following equation:

$$CL_{M1} = CL_{M1,t} \times (1 + C_{AGE} \times [\text{age} - 35])$$

where $CL_{M1,t}$ is the typical value in a patient aged 35 years and C_{AGE} is the proportionality constant between age and CL_{M1} . ISP was not significant, which indicated that no PK difference between healthy subjects and patients existed. The overall structure of the PK and PD model is given in Figure 1 and the basic goodness-of-fit plots for each metabolite are presented in Figure 2. Final parameter estimates are summarized in Table 2.

Pharmacodynamic model

The turnover model shown in Figure 1 was chosen for its description of a delayed drug effect compared with fluctuation of drug concentration. In this model, a patient's

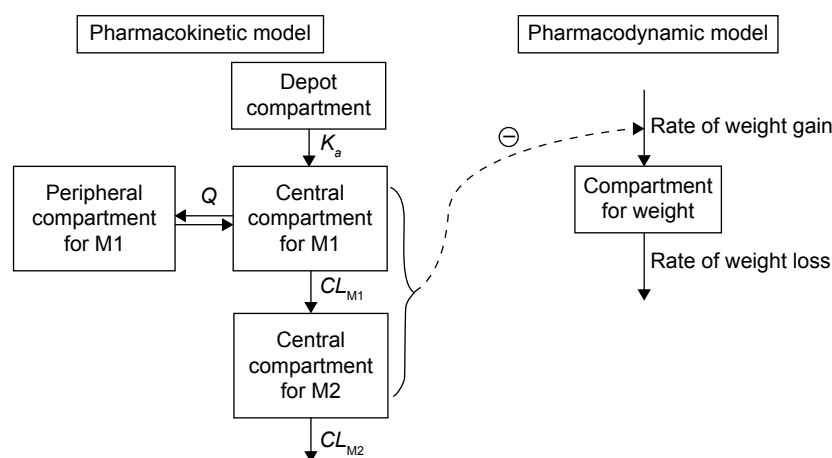


Figure 1 The structure of the sibutramine exposure–response model.

Notes: M1, *N*-[1-[1-(4-chlorophenyl)cyclobutyl]-3-methylbutyl]-*N*-methylamine; M2, 1-[1-(4-chlorophenyl)cyclobutyl]-3-methylbutylamine; K_a , rate constant for M1 formation (including absorption and metabolism of sibutramine); Q , intercompartmental clearance of M1; CL_{M1} , metabolic clearance of M1 to M2; CL_{M2} , metabolic clearance of M2.

body weight is determined by the equilibrium between rates of gaining and losing body weight:

$$\text{Rate of weight change} = \text{Rate of weight gain} - \text{rate of weight loss}$$

In our model, the effect of the drug was to inhibit the rate of weight gain. In addition, the placebo effect was incorporated as constant inhibition of weight gain. The overall model for the rate of weight gain was as follows:

$$\text{Rate of weight gain} = k_{in} \times \left(1 - \frac{E_{max} \times AUC_{ss,sum}}{[AUC_{50} + AUC_{ss,sum}]} - P_{max} \right)$$

where k_{in} is the baseline rate of weight gain, E_{max} is maximal inhibition (a value between 0 and 1), AUC_{50} is the $AUC_{ss,sum}$ required for 50% maximal inhibition, and P_{max} is a constant placebo effect.

The rate of weight loss was modeled following first-order kinetics, which is proportional to body weight at each measurement:

$$\text{Rate of weight loss} = k_{out} \times \text{body weight}$$

where k_{out} is the rate constant of weight loss. k_{in} was not estimated but calculated from the relationship between baseline body weight (*BASE*) and rate constant of weight loss as follows:

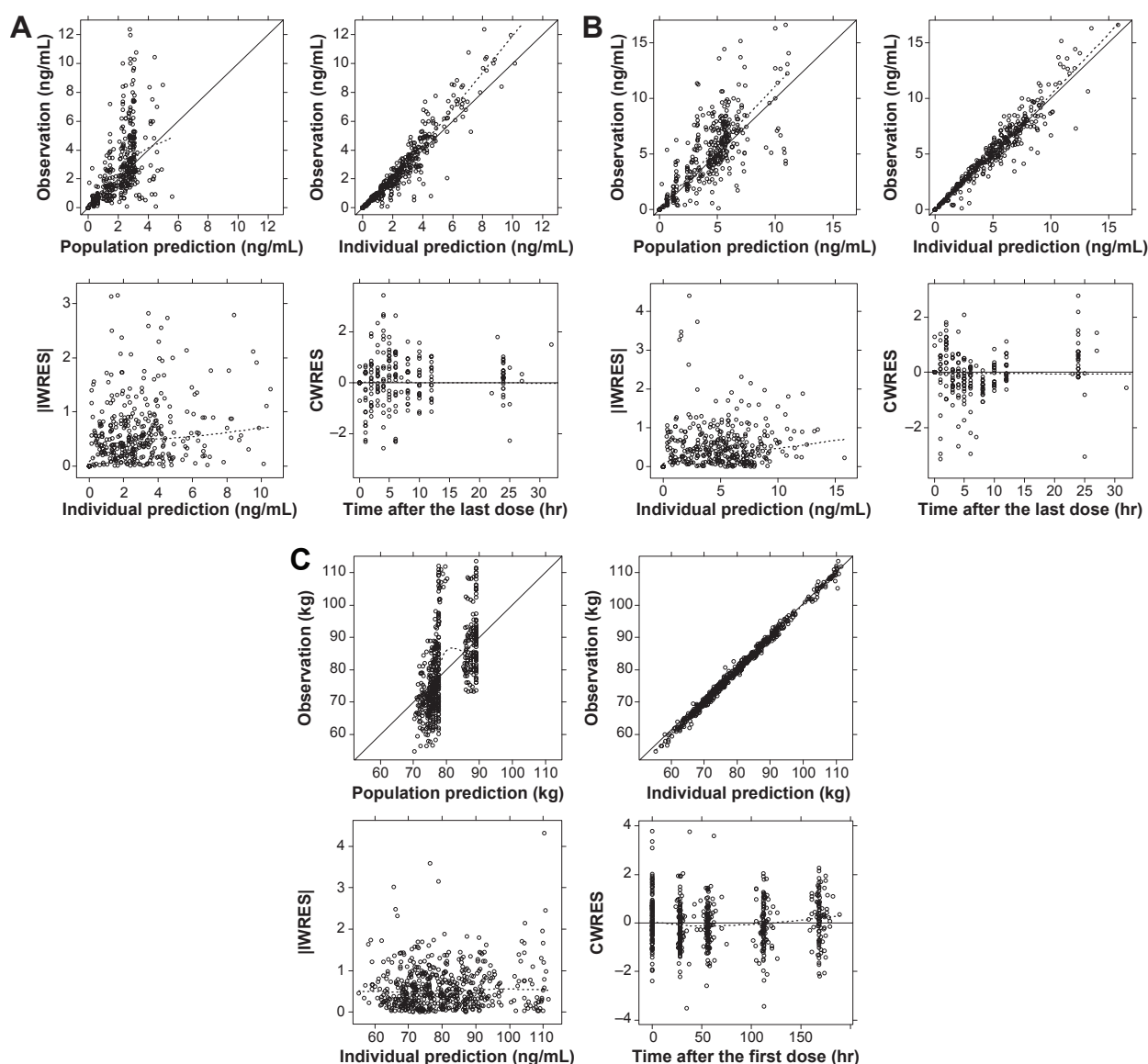


Figure 2 Basic goodness-of-fit plots for the sibutramine exposure–response model.

Notes: (A) Plasma concentration of M1; (B) plasma concentration of M2; (C) patients' body weights.

Abbreviations: IWRES, individual weighted residuals; CWRES, conditional weighted residuals; M1, N-[1-[1-(4-chlorophenyl)cyclobutyl]-3-methylbutyl]-N-methylamine; M2, 1-[1-(4-chlorophenyl)cyclobutyl]-3-methylbutylamine.

Table 2 Final parameter estimates for the exposure–response model

Parameter	Unit	Description	Population typical value		Between-subject variability	
			Estimate	Bootstrap 90% CI	Estimate (CV%)	Bootstrap 90% CI
Pharmacokinetic parameters						
$V_{M1,c}$	L	Volume of central compartment for M1	2,340	1,540–3,650	127.5	60.6–149
$V_{M1,p}$	L	Volume of peripheral compartment for M1	2,060	1,540–2,960	77.8	24.8–113
V_{M2}	L	Volume of central compartment for M2	43.9	34.1–57.3	NE ^a	NE ^a
$CL_{M1} = CL_{M1,t} \times (1 + k_{AGE} \times [\text{age } 35])$	L/h	Clearance of M1	158	144–190	47.8	36.5–52.2
$CL_{M1,t}$	yr ⁻¹	Typical value of clearance of M1–M2 for patients aged 35 years	0.0120	0.00698–0.0257	–	–
C_{AGE}	L/h	Proportionality constant between age and the clearance of M1	157	118–225	82.0	71.9–90.7
Q_{M1}	L/h	Intercompartmental clearance for M1	70.7	65.4–79.3	29.6	21.2–36.2
CL_{M2}	L/h	Clearance of M2	0.348	0.209–0.516	117.2	26.8–137
k_a	h ⁻¹	Absorption rate constant to M1	0.296	0.260–0.332	–	–
$\sigma_{M1,p}^2$	–	Variance of residual error (proportional) for M1 concentration	0.252	0.215–0.291	–	–
$\sigma_{M2,p}^2$	–	Variance of residual error (proportional) for M2 concentration				
PK–PD linking parameters ^b						
$AUC_{ss,sum}$	h ng/mL	Calculated AUC_{ss} for sibutramine 8.37 mg	171	–	27.9	–
		Calculated AUC_{ss} for sibutramine 12.55 mg	257	–	25.2	–
Pharmacodynamic parameters						
$BASE = MW - SEX^c \times FWC$						
MW	kg	Baseline body weight of male subjects	89.1	86.6–91.2	–	–
FWC	kg	Baseline body weight difference of female subjects	11.4	8.87–14.1	–	–
k_{out}	day ⁻¹	Rate constant of weight loss	0.00947	0.00408–0.0208	NE ^a	NE ^a
$P_{max} = P_{fem} \times SEX^c \times (BMI/30.1)^{DEX}$	–	Placebo effect in female subject with BMI 30.1 kg/m ²	0.0327	0.0164–0.0606	4.35	2.28–8.30
P_{fem}	–	Exponent of mean-normalized BMI	–4.74	–7.24–2.74	–	–
BEX	–	Maximal inhibition by sibutramine	0.0735	0.0394–0.0998	NE ^a	NE ^a
E_{max}	h ng/mL	$AUC_{ss,sum}$ required to exert 50% maximal inhibition	106	30.4–268	NE ^a	NE ^a
$\sigma_{PD,\alpha}^2$	–	Variance of residual error (additive) for body weight	1.21	1.07–1.32	–	–

Notes: ^aNE, not estimated; ^bcalculated value from the clearance parameters; ^csex was coded as 0 for males, and 1 for females.

Abbreviations: CI, confidence interval; yr, year; PK, pharmacokinetic; PD, pharmacodynamic; BMI, body mass index; AUC , area under the concentration curve.

$$k_{in} = BASE \times k_{out}$$

In the final model, sex (*SEX*) was selected as a meaningful covariate for *BASE* and P_{max} (placebo effect was acknowledged only in female subjects). BMI at baseline was also chosen as a factor affecting P_{max} :

$$P_{max} = P_{fem} * SEX * \left(\frac{BMI}{30.1} \right)^{BEX}$$

where P_{fem} is the extent of the placebo effect in female subjects with a BMI of 30.1 kg/m², *SEX* is coded as 0 for males and 1 for females, BMI is the baseline BMI value, and *BEX* is the exponent of mean-normalized BMI.

BSVs were estimated for *BASE* and P_{max} . For P_{max} , an additive BSV (eg, + η) was determined to be the best structure. The final structure and parameter estimates are summarized in Table 2.

Model evaluation and simulation

Bootstrap 90% CIs for PK–PD parameters were successfully estimated and all final parameter estimates were within those intervals. This indicated that the model parameters were robust. Visual predictive check results also showed appropriate predictive performance of the model in that 89.4% of actual observations lay within the simulated 90% CI at each observation time (Figure 3).

Simulated body weight changes after placebo or high-dose (daily 12.55 mg as sibutramine base) sibutramine

demonstrated the influence of sex and BMI on the extent of weight loss (Figure 4). The difference in mean weight loss between the high-dose and placebo-treated groups was expected to be 4.5% (7.1% for the high-dose group and 2.6% for the placebo group) and the proportion of subjects who lost more than 5% of their baseline body weight in the high-dose group was 63.4%±13.7%, whereas that in the placebo group was 33.5%±8.6% (all mean ± standard deviation). The degrees of weight loss were widely distributed and the prediction intervals for weight loss in both groups overlapped considerably. For the low-dose regimen (8.37 mg sibutramine base daily), the proportion was predicted to be 46.9%±10.1%.

Discussion

We successfully developed an exposure–response model describing the extent and time course of weight loss in response to sibutramine treatment. We did this by utilizing pharmacological knowledge of the drug and data obtained from previous clinical studies with some assumptions. Despite the relatively short study duration, we made several important findings. With regard to the PK model, we supplemented the clinical trial data with data obtained previously from healthy volunteers through a heterogeneity test using an indicator variable. The concentration ranges for both M1 and M2 were similar to those reported for healthy male Korean subjects¹⁴ and their difference between patients and healthy subjects was not acknowledged. The PK model explained the time–concentration relationship within this concentration range well, despite some assumptions irrelevant to actual metabolic pathways.^{11,12} By estimating CL_{M1} , we found that

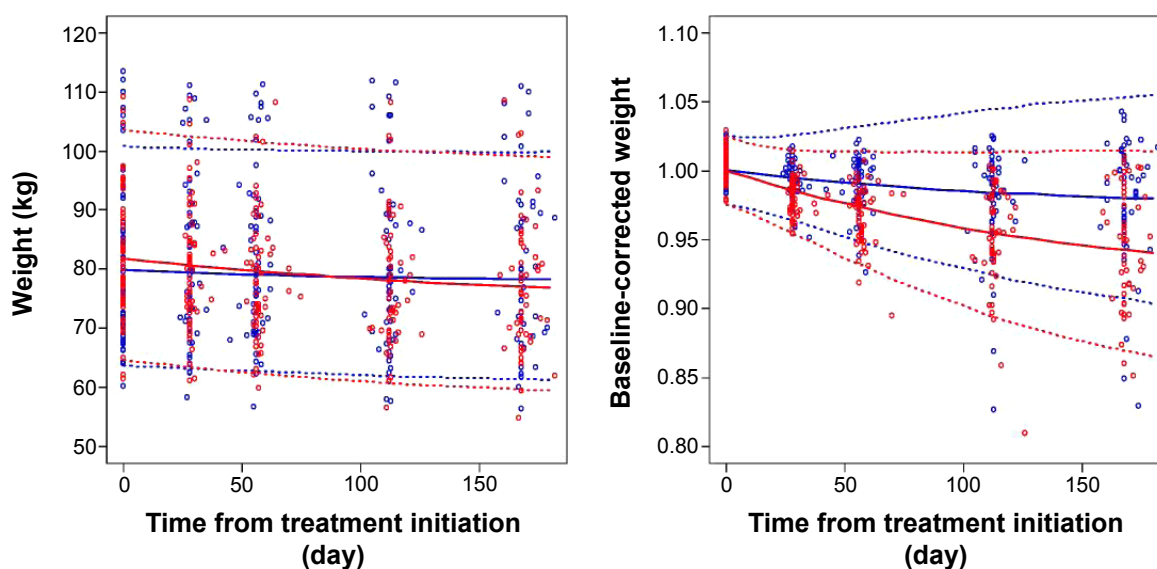


Figure 3 Visual predictive check for weight change during the first 6 months after treatment initiation.

Notes: Blue graphical elements, placebo group; red graphical elements, actively treated group; open circle, observed weight; solid lines, median value of simulated weight at each observation time; dashed line, margin of 90% confidence interval for each group.

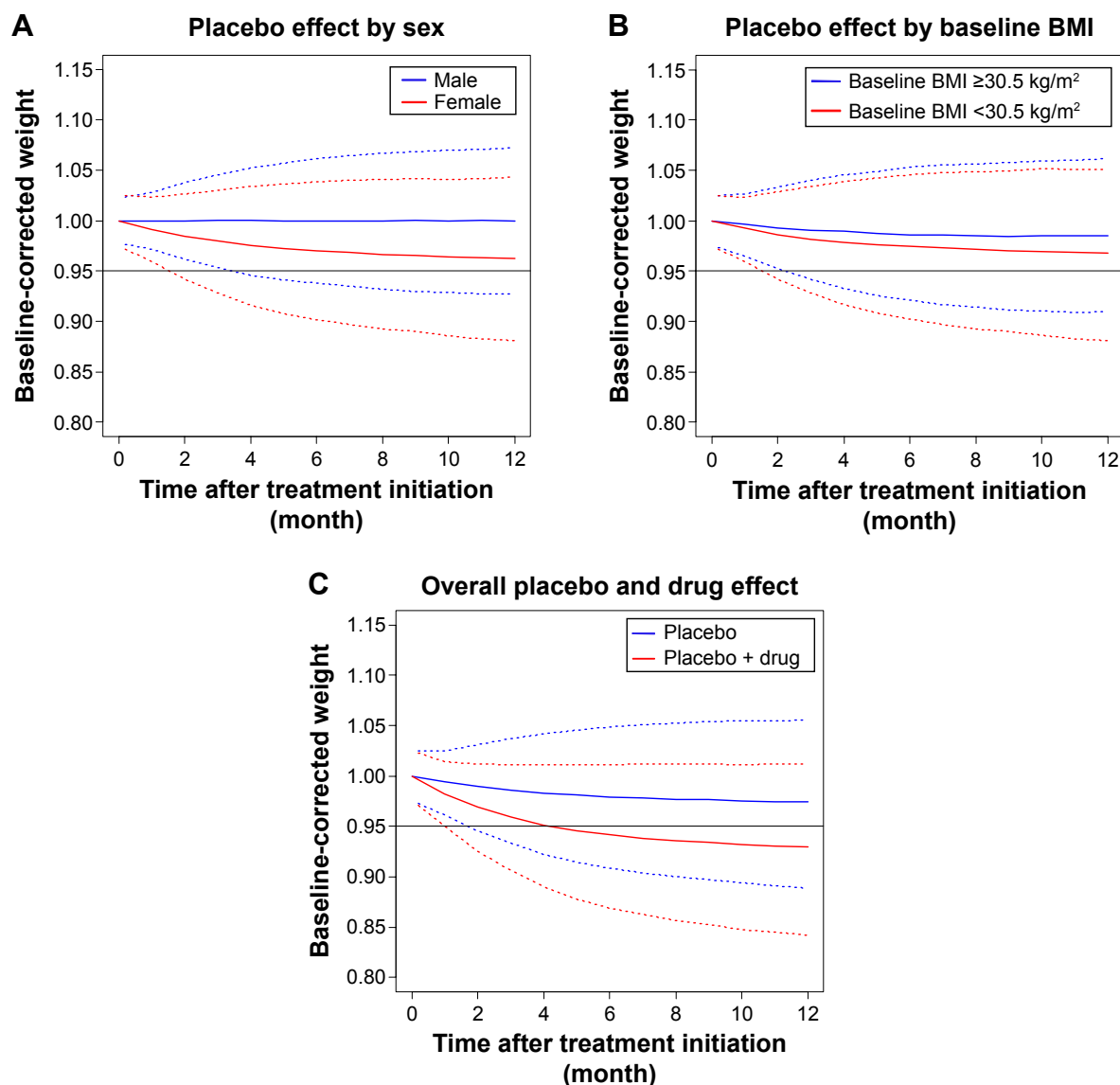


Figure 4 Predicted time course of weight loss by the exposure–response model.

Notes: Blue graphical elements, placebo group; red graphical elements, high-dose (12.55 mg sibutramine daily) group; solid line, mean change in body weight for each group. Dashed line, margin of 90% prediction interval for each group. (A) weight change by sex; (B) weight change by baseline BMI category; (C) overall placebo effect compared to drug effect.

Abbreviation: BMI, body mass index.

formation of M2 from M1 is positively correlated with age. A similar result was reported in a previous study by Hind et al¹⁵ in which the ratios between AUCs of M1 and M2 were 5.98 and 6.58 for young and elderly subjects, respectively. The underlying reason for this observation is not clear; however, it might be due to age-related changes in the activity of enzymes involved in the relevant metabolic pathways.

The goodness-of-fit and predictive performance of the final model were satisfactory, which implied that the use of $AUC_{ss,sum}$ as an exposure variable was acceptable. Using this approach, our model highlighted several points that should be considered when evaluating weight-control drugs. We found that the length of time required for efficacy assessment, which

is currently 1 year, was appropriate. In the asymptotic weight loss model, saturation was obtained after 4–5 half-lives of weight loss. The half-life was calculated from the estimate of k_{out} using the following formula, because weight loss is assumed to follow first-order kinetics:

$$\text{Half-life of weight loss} = \frac{0.693}{k_{out}}$$

The half-life obtained in this analysis was 73.2 days, and the drug effect was expected to reach a plateau at around 300 days after treatment initiation. Our placebo model indicated that the placebo effect was not dependent on the

type of placebo (matching low dose or high dose), and thus, we selected a constant placebo effect over the entire treatment period. We also found that the placebo effect was more pronounced in female and relatively less obese patients than other patients. We attributed this to a combination of social and personal characteristics. This implies that nonphysiological factors may be involved in weight loss and that those factors should be considered when evaluating the placebo effect. However, these findings need further assessment through studies in other cultural areas or countries because we only examined Koreans in our study. Possible genetic differences in sibutramine response were included in this analysis, but are not described in detail because the genotypes had no meaningful influence on the PK–PD parameters. Wide variability in lifestyle factors other than those recorded as demographic characteristics might be one possible explanation for this lack of effect of genotypes.

As a secondary outcome of this study, we evaluated the clinical effectiveness of sibutramine. Despite our short study period (longer than 6 months), which was the required duration of treatment to prove efficacy according to Korean regulations at the time the study was conducted, we extrapolated our results to 1 year of treatment. In this simulation, we found that sibutramine did not show sufficient effectiveness to meet the current criteria for approval^{16,17} for weight-control drugs even though we presumed that a high dose of the drug was given and that patient compliance was 100%. Empirical maximal efficacy was 7.35% (E_{\max}); however, the $AUC_{ss,sum}$ obtained in the target population (257 h ng/mL on average) was not high enough to achieve sufficient effectiveness.

Using our modeling–simulation approach, we were able to quantitatively evaluate the time–concentration relationship, representative exposure variables, extent of response to the drug and placebo, time course of weight loss, and several other factors influencing weight loss. Since the model was built based upon some mathematical assumptions and does not include all of the influential factors occurring in the real-world settings, the utility of the model may be limited. Thus, the prediction on effectiveness of sibutramine using our exposure–response model may not be inconsistent with the actual findings obtained so far, and this study was not involved in any developmental processes. However, it was our intent to exemplify an exposure–response model for weight loss including placebo effect focusing on the quantification ability of existing data, and to describe the possible role of modeling and simulation which may aid the decision-making in drug development providing with fit-for-purpose predictions. Therefore, we suggest that weight-control drug development

could potentially be more efficient if a model building and utilization process similar to that described in this study was implemented early in drug development based on a quick win–fast fail paradigm.¹⁸

Acknowledgment

This study was supported by a grant of the Korean Health Technology R&D Project, Ministry of Health & Welfare, Republic of Korea (HI14C1731).

Disclosure

The authors report no conflicts of interest in this work.

References

1. Flegal KM, Carroll MD, Kit BK, Ogden CL. Prevalence of obesity and trends in the distribution of body mass index among US adults, 1999–2010. *JAMA*. 2012;307(5):491–497.
2. James PT, Rigby N, Leach R; International Obesity Task Force. The obesity epidemic, metabolic syndrome and future prevention strategies. *Eur J Cardiovasc Prev Rehabil*. 2004;11(1):3–8.
3. Kim MH, Kim MK, Choi BY, Shin YJ. Prevalence of the metabolic syndrome and its association with cardiovascular diseases in Korea. *J Korean Med Sci*. 2004;19(2):195–201.
4. Scheen AJ. Sibutramine on cardiovascular outcome. *Diabetes Care*. 2011;34(suppl 2):S114–S119.
5. Arterburn DE, Crane PK, Veenstra DL. The efficacy and safety of sibutramine for weight loss. *Arch Intern Med*. 2004;164(9):994–1003.
6. Rodgers RJ, Tschöp MH, Wilding JP. Anti-obesity drugs: past, present and future. *Dis Model Mech*. 2012;5(5):621–626.
7. Zhang L, Sinha V, Forgue ST, et al. Model-based drug development: the road to quantitative pharmacology. *J Pharmacokinet Pharmacodyn*. 2006;33(3):369–393.
8. Lalonde RL, Kowalski KG, Hutmacher MM, et al. Model-based drug development. *Clin Pharmacol Ther*. 2007;82(1):21–32.
9. Meibohm B, Derendorf H. Pharmacokinetic/pharmacodynamic studies in drug product development. *J Pharm Sci*. 2002;91(1):18–31.
10. Jain DS, Subbaiah G, Sanyal M, et al. Liquid chromatography/electrospray ionization tandem mass spectrometry validated method for the simultaneous quantification of sibutramine and its primary and secondary amine metabolites in human plasma and its application to a bioequivalence study. *Rapid Commun Mass Spectrom*. 2006;20(23):3509–3521.
11. Bae SK, Cao S, Seo KA, et al. Cytochrome P450 2B6 catalyzes the formation of pharmacologically active sibutramine (N-{1-[1-(4-chlorophenyl)cyclobutyl]-3-methylbutyl}-N,N-dimethylamine) metabolites in human liver microsomes. *Drug Metab Dispos*. 2008;36(8):1679–1688.
12. Link M, Hakala KS, Wsol V, Kostianen R, Ketola RA. Metabolite profile of sibutramine in human urine: a liquid chromatography-electrospray ionization mass spectrometric study. *J Mass Spectrom*. 2006;41(9):1171–1178.
13. Padwal RS, Majumdar SR. Drug treatments for obesity: orlistat, sibutramine, and rimonabant. *Lancet*. 2007;369(9555):71–77.
14. Park JY, Kim KA, Park PW, Suh KH, Lee GS. Relative bioavailability and pharmacokinetics of a new sibutramine formulation in healthy male subjects: a randomized, open-label, two-period, comparative crossover study. *Clin Ther*. 2004;26(12):2092–2101.
15. Hind ID, Mangham JE, Ghani SP, Haddock RE, Garratt CJ, Jones RW. Sibutramine pharmacokinetics in young and elderly healthy subjects. *Eur J Clin Pharmacol*. 1999;54(11):847–849.

16. Center for Drug Evaluation and Research (CDER), Food and Drug Administration, U.S. Department of Health and Human Services. *Guidance for Industry (Draft) – Developing products for weight management. Revision 1*; 2007. Available from <http://www.fda.gov/downloads/Drugs/.../Guidances/ucm071612.pdf>.
17. Committee for Medicinal Products for Human Use (CHMP), European Medicines Agency. *Guideline on Clinical Evaluation of Medicinal Products Used in Weight Control*; 2007. Available from: https://www.google.co.nz/url?sa=t&rct=j&q=&esrc=s&source=web&cd=1&cad=rja&uact=8&ved=0CB0QFjAAahUKEwja7vLR2pDHAhUinqYKHZ5KB2E&url=http%3A%2F%2Fwww.ema.europa.eu%2Fema%2Fpages%2Fincludes%2Fdocument%2Fopen_document.jsp%3FwebContentId%3DWC500170278&ei=v1vBVZqTNqK8mgWelZ2lBg&usg=AFQjCNGaBoZJFB9F_8lptwb4wdfui7rxA&sig2=Yfr5TH9PAe-f8jYlXMu3A&bvm=bv.99261572,d.dGY.
18. Paul SM, Mytelka DS, Dunwiddie CT, et al. How to improve R&D productivity: the pharmaceutical industry's grand challenge. *Nat Rev Drug Discov.* 2010;9(3):203–214.

Drug Design, Development and Therapy

Dovepress

Publish your work in this journal

Drug Design, Development and Therapy is an international, peer-reviewed open-access journal that spans the spectrum of drug design and development through to clinical applications. Clinical outcomes, patient safety, and programs for the development and effective, safe, and sustained use of medicines are a feature of the journal, which

has also been accepted for indexing on PubMed Central. The manuscript management system is completely online and includes a very quick and fair peer-review system, which is all easy to use. Visit <http://www.dovepress.com/testimonials.php> to read real quotes from published authors.

Submit your manuscript here: <http://www.dovepress.com/drug-design-development-and-therapy-journal>