

# Knockdown of a HIF-2 $\alpha$ promoter upstream long noncoding RNA impairs colorectal cancer stem cell properties in vitro through HIF-2 $\alpha$ downregulation

Jie Yao<sup>1,\*</sup>Jianxiong Li<sup>2,\*</sup>Peiliang Geng<sup>2,\*</sup>Yi Li<sup>3,\*</sup>Hong Chen<sup>3</sup>Yunfeng Zhu<sup>2</sup>

<sup>1</sup>Department of Oncology, People's Liberation Army No 161 Hospital, Wuhan, <sup>2</sup>Cancer Center, Division of Internal Medicine, Chinese PLA General Hospital, Beijing, <sup>3</sup>Department of Oncology, Kunming General Hospital of Chendu Military Command, Kunming, People's Republic of China

\*These authors contributed equally to this work

**Abstract:** Currently, various long noncoding RNAs (lncRNAs) have been identified as key regulators of multiple cancers. However, cancer stem cell (CSC)-related lncRNAs have rarely been reported. In this study, we found an lncRNA that is a promoter upstream transcript of hypoxia-inducible factor-2 $\alpha$  (HIF-2 $\alpha$ ), and we named it “lncRNA-HIF2PUT”. The function of HIF-2 $\alpha$  is closely connected with “stem cell-like” properties, and the function of PROMPTs is often associated with the adjacent protein-coding transcripts. Herein, we showed that the expression of lncRNA-HIF2PUT was significantly correlated with HIF-2 $\alpha$  in colorectal cancer (CRC) tissues. Knockdown of lncRNA-HIF2PUT blocked the HIF-2 $\alpha$  expression and inhibited the CSC properties in CRC cell lines DLD-1 and HT29. lncRNA-HIF2PUT small interfering RNA transfection resulted in decreased stemness genes expression, impaired colony formation, and spheroid formation ability, retarded migration, and invasion of the cells. These data suggest that lncRNA-HIF2PUT may be a regulator of HIF-2 $\alpha$  and a mediator of CSCs in CRC.

**Keywords:** HIF-2 $\alpha$ , long noncoding RNA, colorectal cancer, stem cell properties

## Introduction

Colorectal cancer (CRC) is one of the most common malignancies and a leading cause of cancer-related deaths worldwide. The treatment of CRC has achieved certain advances in recent years. However, for the patients with metastasis and tumor recurrence, prognosis remains poor. Current opinion is that malignant tumors may derive from a small subset of cancer stem cells (CSCs) responsible for tumor aggressiveness and recurrence, and new therapies targeting these CRC cancer stem cells (CRC-CSCs) may remarkably improve clinical treatment of CRC.<sup>1-4</sup>

In recent years, more advanced genome analyses have revealed that more than 90% of the human genome is pervasively transcribed into noncoding RNAs (ncRNAs). In addition, long noncoding RNAs (lncRNAs) are the RNA molecules that are larger than 200 nt and that lack an open reading frame.<sup>5</sup> Currently, numerous cancer-related lncRNAs have been discovered.<sup>6</sup> Some lncRNAs have been found to be involved in stem cell properties like pluripotency and differentiation.<sup>7</sup> Nevertheless, CSC-related lncRNAs have rarely been investigated.

A large number of lncRNA transcripts originate from transcription at promoters or other nearby location of protein-coding genes. These “lncRNA/messenger RNA (mRNA) gene pairs” interact with each other in expression and in their function, which is related to stem cell properties.<sup>8</sup> Through bioinformatics analysis, we found a lncRNA

Correspondence: Yunfeng Zhu  
Cancer Center, Division of Internal Medicine, Chinese PLA General Hospital, No 28 Fuxing Road, Beijing 100853, People's Republic of China  
Tel/fax +086 871 6477 4649  
Email yunqiyunl@126.com

Hong Chen  
Department of Oncology, Kunming General Hospital of Chendu Military Command, No 212 Duguan Road, Kunming 650032, People's Republic of China  
Email chenhonnh@126.com

TCONS\_00004241 (data from USCS website), which is located at 2p21 on the upstream side of Hypoxia-inducible factor-2 $\alpha$  (HIF-2 $\alpha$ ) promoter and is transcribed from the antisense direction of it. This lncRNA belongs to a class of ncRNAs called promoter upstream transcripts (PROMPTs).<sup>9,10</sup> Therefore, we renamed it as the “lncRNA-HIF-2 $\alpha$  promoter upstream transcript (HIF2PUT)”. The expression and function of PROMPTs are often associated with adjacent protein-coding transcripts.<sup>11,12</sup>

The function of HIF-2 $\alpha$ , also named EPAS1, has been demonstrated to be in association with “stem cell-like” properties in stem cells and CSCs.<sup>13–15</sup> Recently, we have already demonstrated that lncRNA-HIF2PUT is functionally associated with the CSC properties in osteosarcoma.<sup>16</sup> Therefore, we speculated that lncRNA-HIF2PUT may also regulate the stem cell-like characteristics of CRC-CSCs by regulating HIF-2 $\alpha$ . Based on these findings, in the current study, we investigated the expression pattern of the lncRNA/mRNA gene pairs of lncRNA-HIF2PUT and HIF-2 $\alpha$  in 23 CRC specimens. The results showed that the expression of lncRNA-HIF2PUT was positively correlated with HIF-2 $\alpha$ . In addition, in CRC cell lines DLD-1 and HT29, we found knockdown of lncRNA-HIF2PUT resulted in decreased HIF-2 $\alpha$  expression as well as impaired CSC properties, including proliferation, self-renewal, migration, and invasion abilities.

## Materials and methods

### Patient samples

Patients with CRC who underwent initial surgery at the Chinese People's Liberation Army (PLA) General Hospital, Beijing, from 2011 to 2013 were retrospectively selected for this study. No patient had received therapy before resection. The utilization of tumor material for research was approved by the ethical committee of the PLA General Hospital. Written informed consent was obtained from each participant prior to tumor samples collection.

## Cancer cell lines

Human CRC cell lines SW620, SW480, HT29, HCT116, CACO2, DLD-1, LS174T, and RKO, and an epithelial cell line FHC, which was derived from normal human colon, were all purchased from the American Type Culture Collection (ATCC; Manassas, VA, USA). The SW620 and SW480 cells were cultured in Leibovitz's L-15 Medium (Thermo Fisher Scientific, Waltham, MA, USA), FHC cells were cultured in Dulbecco's Modified Eagle's Medium (DMEM)/F-12 Medium, and the other CRC cell lines were cultured in DMEM medium (Thermo Fisher Scientific), all containing 10% fetal bovine serum (Thermo Fisher Scientific) at 37°C with 5% CO<sub>2</sub>. Before CSC-related experiments, we enriched the CSCs in DLD-1 and HT29. The DLD-1 and HT29 cells were transferred into the stem cell culturing medium, the serum-free DMEM/F12 medium with 20 ng/mL human epidermal growth factor (Peprotech Inc, Rocky Hill, NJ, USA), 20 ng/mL human basic fibroblast growth factor (Peprotech Inc), and 1% N2 supplement (Thermo Fisher Scientific).

## Real-time quantitative polymerase chain reaction

Total RNA was isolated from CRC tumor tissues, matched adjacent normal tissues, and CRC cells using TRIzol® Total RNA reagent (Thermo Fisher Scientific). Complementary DNA (cDNA) synthesis was performed with 2  $\mu$ g total RNA using the RevertAid™ H Minus First Strand cDNA synthesis kit (Thermo Fisher Scientific). The primers were obtained from Sangon biotech (Shanghai, People's Republic of China), and the sequences are shown in Table 1.

Real-time quantitative polymerase chain reaction (RT-qPCR) was performed using the SYBR® PrimeScript™ RT-PCR kit (Thermo Fisher Scientific) in a 7500 Fluorescent qPCR System (Thermo Fisher Scientific). The reaction mixtures were incubated at 95°C for 30 seconds,

**Table 1** Primers for real-time PCR analysis

Gene name	Forward	Reverse
<i><math>\beta</math>-Actin</i>	5'-CCACTGGCATCGTGATGGA-3'	5'-CGCTCGGTGAGGATCTTCAT-3'
<i>HIF2PUT</i>	5'-CGGAGGTGTCTATGAGCTGG-3'	5'-AGCTTGTGTGTTTCGACAGAA-3'
<i>HIF-2<math>\alpha</math></i>	5'-TGGGATCTAACAGGAACAGC-3'	5'-CTAAATAGCCAGACAAGGGT-3'
<i>OCT4</i>	5'-TATGCAAAGCAGAAACCTCGTGC-3'	5'-TTCGGGCACTGCAGGAACAAATTC-3'
<i>SOX2</i>	5'-GCCGAGTGGAACCTTTGTCTG-3'	5'-GGCAGCGTGTACTTATCCTTCT-3'
<i>NANOG</i>	5'-TCCAGCAGATGCAAGAACTCTCCA-3'	5'-CACACCATTGCTATTCTTCGGCCA-3'
<i>KLF4</i>	5'-CCCACATGAAGCGACTTCCC-3'	5'-CAGGTCCAGGAGATCGTTGAA-3'
<i>CD44</i>	5'-CTGCCGCTTTGCAGGTGTA-3'	5'-CATTGTGGGCAAGGTGCTATT-3'
<i>CD133</i>	5'-AGTCGGAACTGGCAGATAGC-3'	5'-GGTAGTGTGTACTGGGCAAT-3'

**Abbreviations:** PCR, polymerase chain reaction; HIF-2 $\alpha$ , hypoxia-inducible factor-2 alpha.

followed by 40 amplification cycles of 95°C for 5 seconds and 60°C for 34 seconds. The comparative  $\Delta$ Ct method was used to quantify relative expression of mRNA and lncRNA. Expression level of housekeeping gene  $\beta$ -actin was used to normalize gene-of-interest expression. The expression level of a gene in a patient was calculated as the ratio of target in tumor tissue/target in nontumorous tissue ( $R [C/N]$ ).

## Western blot analysis

Cells were washed twice with ice-cold phosphate-buffered saline (PBS), and cell lysates were harvested by the addition of lysis buffer (40 mM Tris [pH 7.4], 150 mM NaCl, 10 mM ethylene diamine tetra-acetic acid, 10% glycerol, 1% Triton X-100, 10 mM glycerophosphate, 1 mM Na<sub>3</sub>VO<sub>4</sub>, and 1 mM phenylmethylsulfonyl fluoride) supplemented with protease inhibitor (Hoffman-La Roche Ltd, Basel, Switzerland). Exactly 30  $\mu$ g of protein lysates were separated on a NuPAGE<sup>®</sup> 4%–12% Bis-Tris Gel (Thermo Fisher Scientific), and the separated proteins were transferred onto a polyvinylidene difluoride membrane (Thermo Fisher Scientific). After blocking for 60 minutes with 5% nonfat dry milk, membranes were incubated with the primary antibody overnight at 4°C, followed by incubation with the corresponding secondary antibody for 60 minutes at room temperature. The membranes were developed using enhanced chemiluminescence solutions (Thermo Fisher Scientific).

## Transfection of small interfering RNA

For small interfering RNA (siRNA) analysis, siRNA for the lncRNA-HIF2PUT sequence and nontargeting siRNA were obtained from GenePharma (Shanghai, People's Republic of China). The lncRNA-HIF2PUT sense strand was 5'-CAGCCAUCAUGAUGGUACU-3', and the antisense strand was 5'-AGUACCAUCAUGGCG-3'. Approximately 5% DLD-1 and HT29 cells were plated to each well of 12-well plates for at least 24 hours before transfection to achieve 30%–50% confluency. SiRNA transfection was done with X-tremeGENE<sup>™</sup> transfection reagent (Hoffman-La Roche Ltd) according to the manufacturer's instructions. Cells were collected after transfection for RNA isolation, cell clonogenic survival assay, and spheroid formation assay.

## Colony formation assay

Cells were trypsinized, counted, and then seeded at low density on six-well culture plates and were allowed to grow

undisturbed at 37°C in 5% CO<sub>2</sub> for 10 days; cells were then stained with crystal violet.

## Spheroid formation assay

The capability of self-renewal was assessed using ultra-low attachment surface 96-well culture dishes (Corning Incorporated, Corning, NY, USA). Cells in the nonsense siRNA group or in the lncRNA-HIF2PUT siRNA group were resuspended in 200  $\mu$ L serum-free medium DMEM/F12 with 20 ng/mL human epidermal growth factor, 20 ng/mL human basic fibroblast growth factor, and 1% N2 supplement at a density of 200 cells in each well. Phase-contrast images were obtained 7 days later.

## Scratch wound healing assay

Uniform wounds were scraped in DLD-1 and HT29 epithelial monolayers grown on plastic six-well plates using a pipette tip before transfection. The initial gap length (0 hours) and the residual gap length of 24 hours after wounding were calculated from photomicrographs.

## Matrigel invasion assays

A cell invasion assay was carried out using modified Boyden chambers consisting of transwell-precoated matrigel membrane filter inserts with 8 mm pores in 24-well tissue culture plates (BD Biosciences, San Jose, CA, USA). DMEM containing 10% fetal bovine serum in the lower chamber served as the chemoattractant.

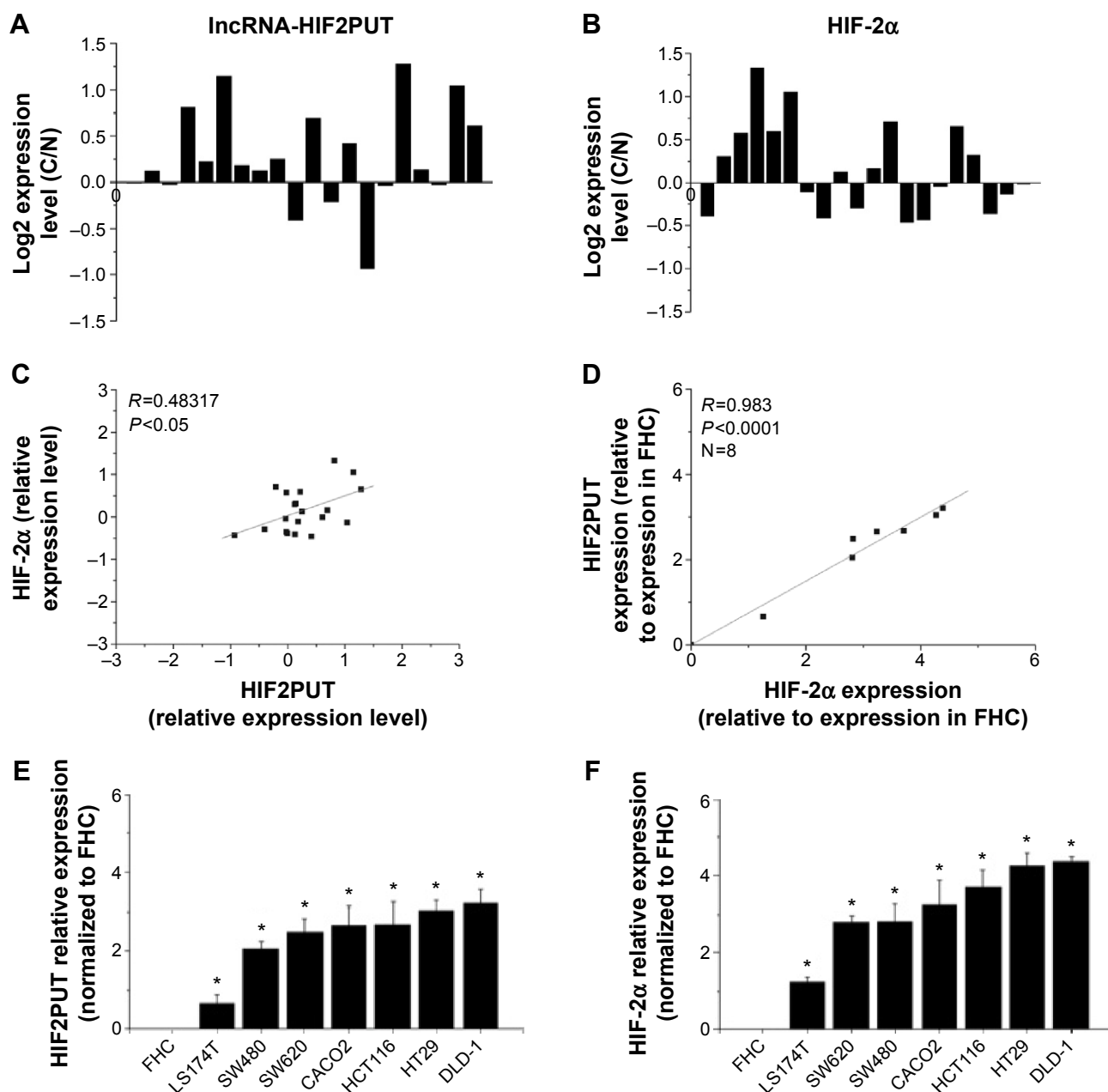
## Statistical analysis

Differences between groups were analyzed using the Student's *t*-test. Correlation between gene expressions was studied by using Pearson's correlation. Statistical analyses were performed using SPSS version 18.0 (SPSS Inc, Chicago, IL, USA). For all statistical analyses,  $P < 0.05$  was considered statistically significant.

## Results

### Expression of lncRNA-HIF2PUT was correlated with HIF-2 $\alpha$ in CRC tissue

lncRNA-HIF2PUT and HIF-2 $\alpha$  expression levels were assessed in a group of 20 patients with CRC. For each patient, lncRNA was isolated from cancerous tissues and adjacent nontumorous CRC tissues. The results showed that the expression of lncRNA-HIF2PUT was significantly correlated with that of HIF-2 $\alpha$  in CRC tissue samples ( $R = 0.5793$ ,  $P < 0.0001$ ; Figure 1A–C). lncRNA-HIF2PUT and HIF-2 $\alpha$  expression were also investigated in a normal colon epithelial cell line



**Figure 1** IncRNA-HIF2PUT and HIF-2α expression levels were analyzed by real-time PCR in CRC tissue samples and in eight cell lines.

**Notes:** (A) The expression levels of IncRNA-HIF2PUT and (B) HIF-2α were calculated as the ratio of targets in cancerous tissue/targets in adjacent normal tissue (R [C/N]). (C) The expression of IncRNA-HIF2PUT was significantly correlated with that of HIF-2α ( $P<0.0001$ ). (D) The expression of IncRNA-HIF2PUT was coincident with that of HIF-2α in the eight cell lines ( $P<0.0001$ ). (E and F) The expression of both IncRNA-HIF2PUT and HIF-2α were significantly higher in each of the seven CRC cell lines than in the normal colon epithelial cell line FHC. The expression of IncRNA-HIF2PUT and HIF-2α was highest in DLD-1 and HT29 cells. \* $P<0.05$ .

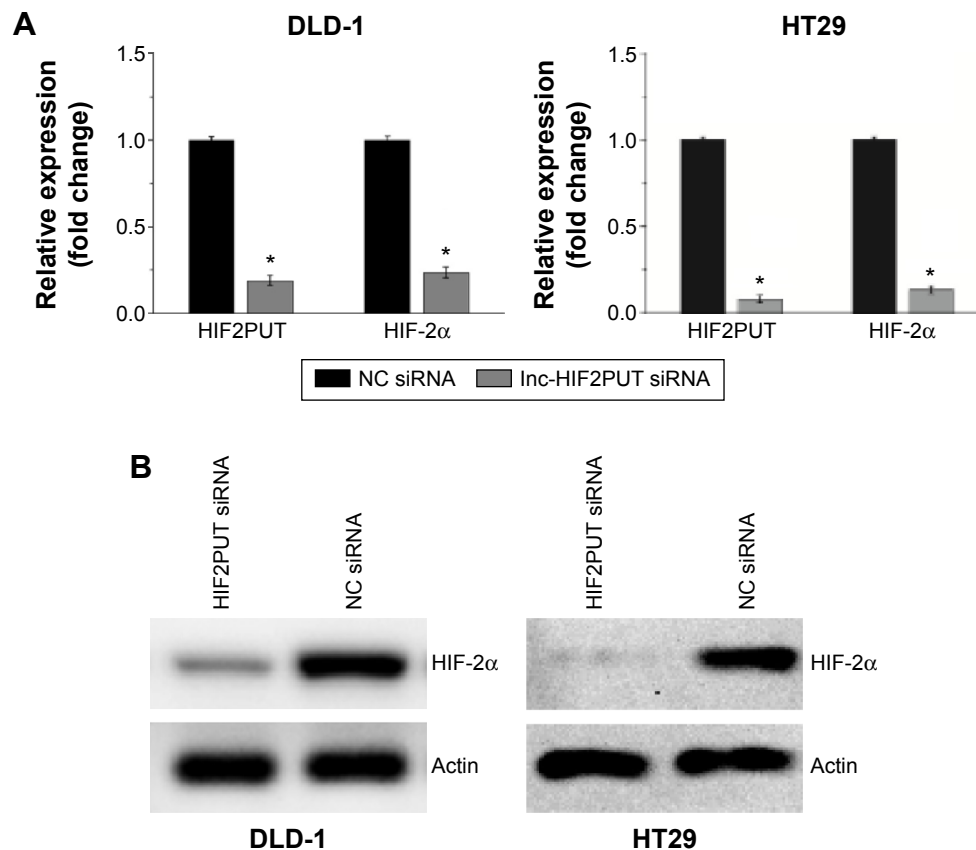
**Abbreviations:** IncRNA-HIF2PUT, long noncoding RNA that is a promoter upstream transcript (PROMPT) of hypoxia-inducible factor-2α; HIF-2α, hypoxia-inducible factor-2 alpha; CRC, colorectal cancer; PCR, polymerase chain reaction.

FHC and seven different CRC cell lines. The results revealed that the expression of IncRNA-HIF2PUT was coincident with that of HIF-2α in all eight cell lines ( $R=0.983$ ,  $P<0.0001$ ; Figure 1D, E). Moreover, expression of both IncRNA-HIF2PUT and HIF-2α were significantly higher in CRC cell lines than in FHC (Figure 1E). Also, the expression of both IncRNA-HIF2PUT and HIF-2α was higher in DLD-1 and HT29 cells than the other cell lines (Figure 1E). Therefore,

we chose DLD-1 and HT29 as our candidate cell lines for a IncRNA-HIF2PUT knockdown experiment.

### Knockdown of IncRNA-HIF2PUT downregulated HIF-2α expression

IncRNA-HIF2PUT siRNA was transfected into DLD-1 and HT29. Quantification analysis showed that IncRNA-HIF2PUT expression level in the IncRNA-HIF2PUT siRNA



**Figure 2** Knockdown of lncRNA-HIF2PUT inhibited the expression of HIF-2 $\alpha$ .

**Notes:** (A) Quantification analysis by real-time PCR showed that the expression levels of both lncRNA-HIF2PUT and HIF-2 $\alpha$  in lncRNA-HIF2PUT siRNA groups were significantly knocked down in DLD-1 and HT29 cell lines. (B) Western blot showed that the HIF-2 $\alpha$  protein expression was also markedly decreased. \* $P < 0.05$ .

**Abbreviations:** lncRNA-HIF2PUT, long noncoding RNA that is a promoter upstream transcript (PROMPT) of hypoxia-inducible factor-2 $\alpha$ ; HIF-2 $\alpha$ , hypoxia-inducible factor-2 alpha; PCR, polymerase chain reaction; siRNA, small interfering RNA; NC, noncancerous.

group was significantly knocked down in DLD-1 and HT29 cells (Figure 2A). Using RT-qPCR and Western blots, we showed that HIF-2 $\alpha$  expression was also markedly decreased in both mRNA level and protein level (Figure 2A, B).

### CSC properties were impaired by lncRNA-HIF2PUT knockdown

Next, we determined the effects of lncRNA-HIF2PUT knockdown on stem cell-like properties in DLD-1 and HT29 cells in vitro. After lncRNA-HIF2PUT siRNA treatment, the stemness genes OCT4, SOX2, and CD44 decreased significantly (Figure 3A, B), which was coincident with decreased colony formation rates in medium containing fetal bovine serum, and spheroid formation ability in serum-free medium (Figure 3C, D). To further identify the functional role of lncRNA-HIF2PUT RNA in cell migration and invasion, the scratch wound healing assay and matrigel invasion assay were performed in DLD-1 and HT29 cells in vitro. The wound healing assay showed remarkable cell migration inhibition in DLD-1 and HT29 siRNA groups compared with the cells

in the noncancerous group (Figure 3E). The matrigel invasion assay also showed significant cell invasion inhibition in the lncRNA-HIF2PUT siRNA group compared with the noncancerous groups in the DLD-1 and HT29 cell lines (Figure 3F).

### Discussion

Hypoxia in the stem cell niche is very important in maintaining the undifferentiated phenotype of normal stem cells and CSCs.<sup>17,18</sup> HIF-2 $\alpha$  is a pivotal hypoxia-activated factor in this process, which can interact with multiple CSC-related pathways, including c-Myc and OCT4, and plays a role in regulating stem cell proliferation, differentiation, and pluripotency.<sup>14,15,19,20</sup>

Li et al demonstrated that in glioma stem cells, HIF-2 $\alpha$  protein may be preferentially expressed under both normoxic and hypoxic conditions.<sup>13</sup> Interestingly, we also detected substantial HIF-2 $\alpha$  protein expression in CSC-enriched CRC cells, even under normoxic conditions. A recent study revealed that transcription of most lncRNA genes is



coordinated with transcription of adjacent protein-coding genes.<sup>8</sup> HIF-2 $\alpha$ , together with its PROMPT, which we named HIF2PUT, is exactly such a lncRNA/mRNA pair.

In the current study, we first investigated the expression of this lncRNA/mRNA pair in 20 cases of CRC specimens; we

found that the expressions of HIF-2 $\alpha$  and lncRNA- HIF2PUT were positively correlated with each other in tumor tissues and adjacent normal tissues of CRC. Also, in eight different cell lines, the expressions of HIF-2 $\alpha$  and lncRNA-HIF2PUT were coincident with each other, and both were elevated in

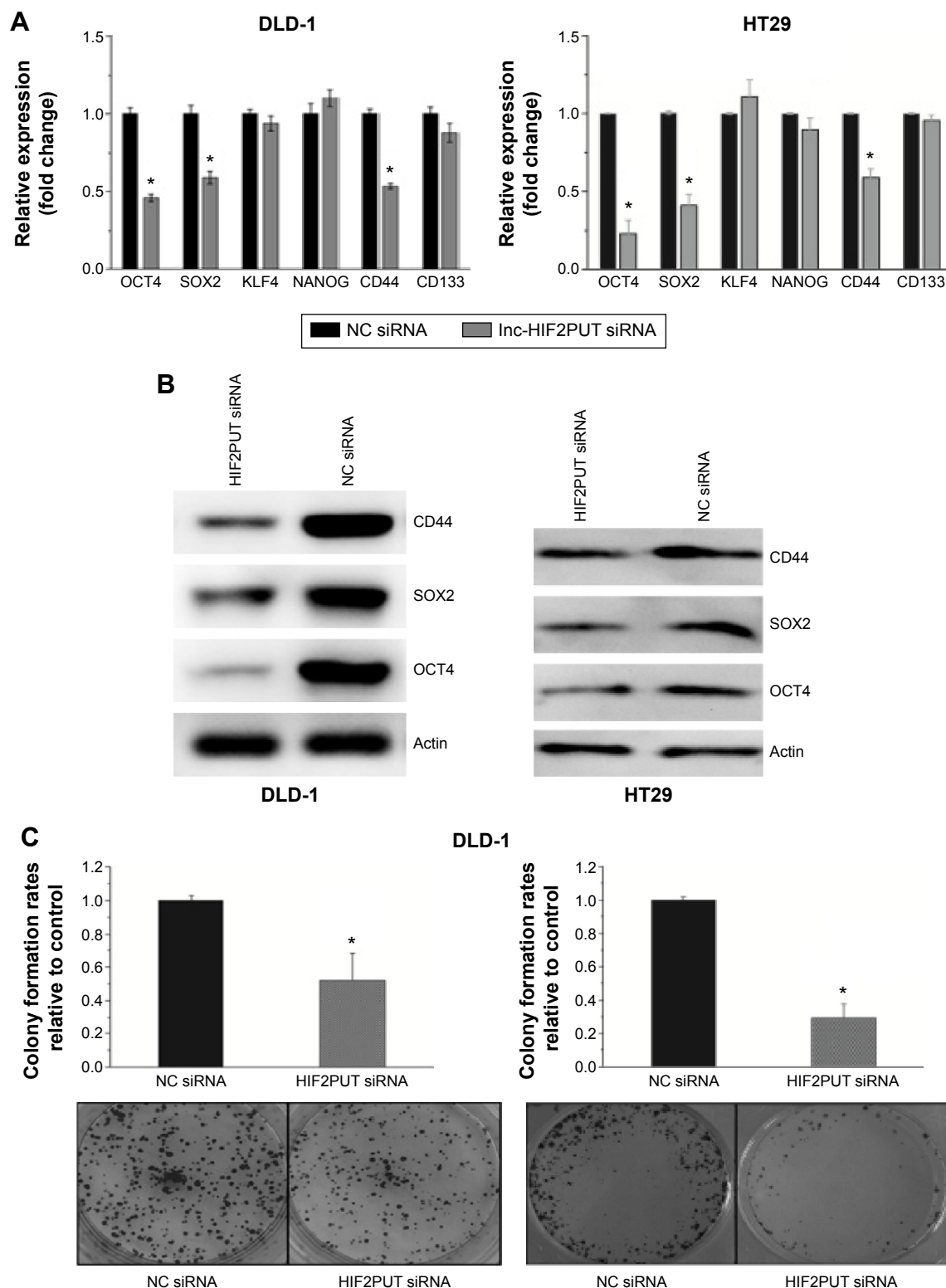
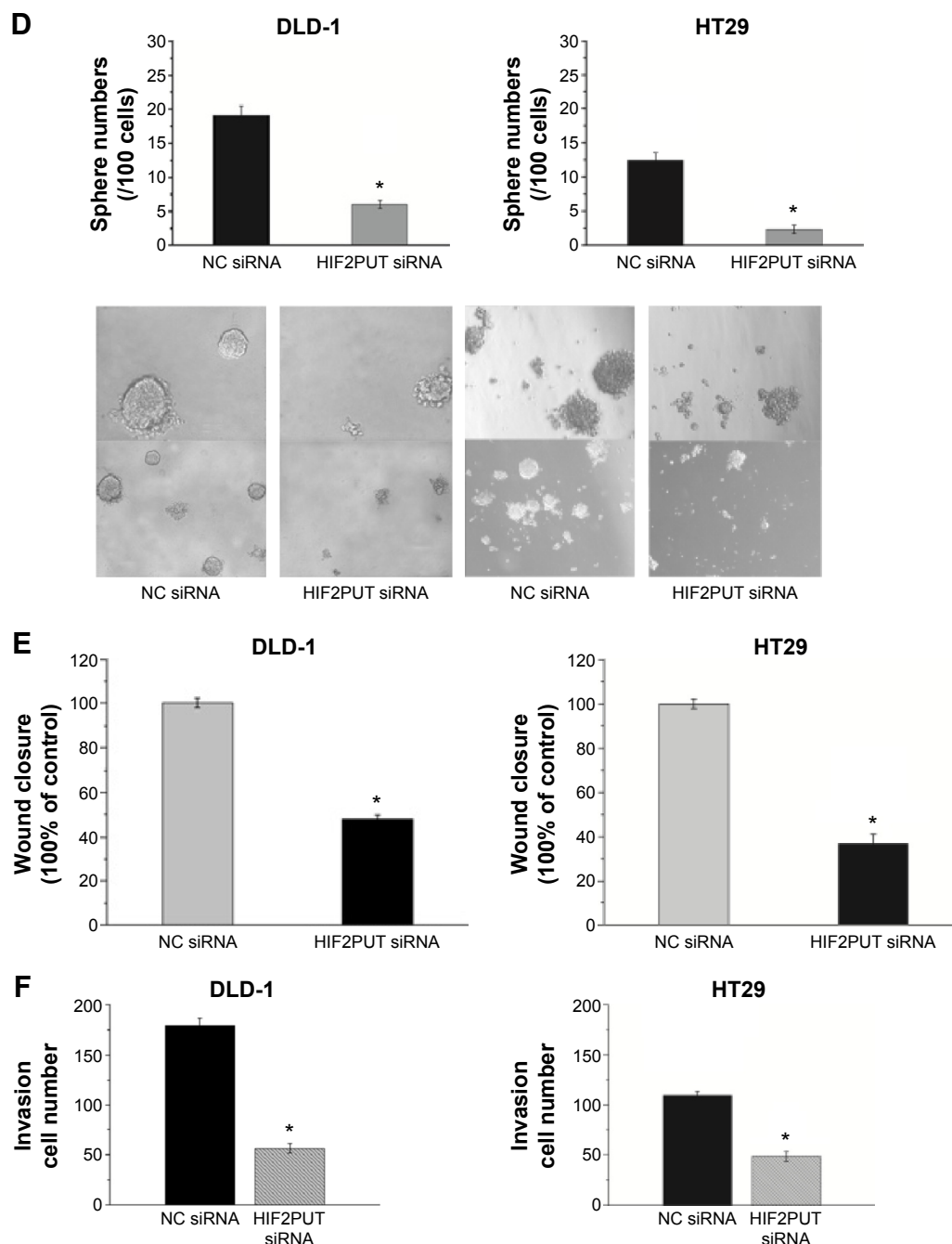


Figure 3 (Continued)



**Figure 3** Knockdown of lncRNA-HIF2PUT impairs CSC properties.

**Notes:** (A) HIF2PUT lncRNA level and six stemness genes' mRNA levels were measured by real-time PCR in DLD-1 and HT29 cells transfected with lncRNA-HIF2PUT siRNA and negative control siRNA. The expression of *OCT4*, *SOX2*, and *CD44* was significantly downregulated. (B) Western blot showed that the expression of *OCT4*, *SOX2*, and *CD44* protein was also significantly reduced in lncRNA-HIF2PUT siRNA groups compared with negative control groups. (C) Colony formation assay showed that CSC proliferation was retarded by lncRNA-HIF2PUT siRNA ( $P < 0.05$ ). (D) Spheroid formation assay showed that the self-renewal capacity in lncRNA-HIF2PUT siRNA groups was remarkably impaired. (E) The wound healing assay showed remarkable cell migration inhibition by lncRNA-HIF2PUT siRNA. (F) The matrigel invasion assay also showed significant cell invasion inhibition by lncRNA-HIF2PUT siRNA. \* $P < 0.05$ .

**Abbreviations:** lncRNA-HIF2PUT, long noncoding RNA that is a promoter upstream transcript (PROMPT) of hypoxia-inducible factor-2 $\alpha$ ; HIF-2 $\alpha$ , hypoxia-inducible factor-2  $\alpha$ ; PCR, polymerase chain reaction; siRNA, small interfering RNA; NC, noncancerous; mRNA, messenger RNA; CSC, cancer stem cell.

CRC cell lines compared with the normal colon epithelial cell line FHC.

Accordingly, when the expression of lncRNA-HIF2PUT was knocked down by siRNA, the expression of HIF-2 $\alpha$  was significantly suppressed. These results indicated that

lncRNA-HIF2PUT may regulate the expression of HIF-2 $\alpha$  in CRC.

Moreover, before this study, the function of lncRNA had rarely been linked with CSC properties, including the expression of stemness genes, self-renewal, proliferation,

migration, and invasion abilities. Herein, we showed that lncRNA-HIF2PUT was functionally associated with CSC properties. Knockdown of lncRNA-HIF2PUT by siRNA resulted in significantly decreased expression of OCT4, SOX2, and CD44, and impaired colony formation ability, spheroid formation ability, and migration and invasion abilities in vitro.

Taken together, these results indicate that lncRNA-HIF2PUT is likely to regulate the characteristics of CRC-CSCs by regulating HIF-2 $\alpha$  expression. Further work targeting this new lncRNA in CRC will be very useful for the cancer clinic in future.

## Disclosure

The authors report no conflicts of interest in this work.

## References

1. Siegel R, Naishadham D, Jemal A. Cancer statistics, 2012. *CA Cancer J Clin*. 2012;62(1):10–29.
2. Merlos-Suárez A, Barriga FM, Jung P, et al. The intestinal stem cell signature identifies colorectal cancer stem cells and predicts disease relapse. *Cell Stem Cell*. 2011;8(5):511–524.
3. Takahashi S, Kamiyama T, Tomaru U, et al. Frequency and pattern of expression of the stem cell marker CD133 have strong prognostic effect on the surgical outcome of colorectal cancer patients. *Oncol Rep*. 2010;24(5):1201–1212.
4. Ailles LE, Weissman IL. Cancer stem cells in solid tumors. *Curr Opin Biotechnol*. 2007;18(5):460–406.
5. Guttman M, Amit I, Garber M, et al. Chromatin signature reveals over a thousand highly conserved large non-coding RNAs in mammals. *Nature*. 2009;458(7235):223–227.
6. Gutschner T, Diederichs S. The hallmarks of cancer: a long non-coding RNA point of view. *RNA Biol*. 2012;9(6):703–719.
7. Guttman M, Donaghey J, Carey BW, et al. lincRNAs act in the circuitry controlling pluripotency and differentiation. *Nature*. 2011;477(7364):295–300.
8. Sigova AA, Mullen AC, Molinie B, et al. Divergent transcription of long noncoding RNA/mRNA gene pairs in embryonic stem cells. *Proc Natl Acad Sci U S A*. 2013;110(8):2876–2881.
9. Preker P, Nielsen J, Kammiller S, et al. RNA exosome depletion reveals transcription upstream of active human promoters. *Science*. 2008;322(5909):1851–1854.
10. Jacquier A. The complex eukaryotic transcriptome: unexpected pervasive transcription and novel small RNAs. *Nat Rev Genet*. 2009;10(12):833–844.
11. Preker P, Almvig K, Christensen MS, et al. PROMoter uPstream Transcripts share characteristics with mRNAs and are produced upstream of all three major types of mammalian promoters. *Nucleic Acids Res*. 2011;39(16):7179–7193.
12. Taft RJ, Kaplan CD, Simons C, Mattick JS. Evolution, biogenesis and function of promoter-associated RNAs. *Cell Cycle*. 2009;8(15):2332–2338.
13. Li Z, Bao S, Wu Q, et al. Hypoxia-inducible factors regulate tumorigenic capacity of glioma stem cells. *Cancer Cell*. 2009;15(6):501–513.
14. Gordan JD, Bertout JA, Hu CJ, Diehl JA, Simon MC. HIF-2 $\alpha$  promotes hypoxic cell proliferation by enhancing c-myc transcriptional activity. *Cancer Cell*. 2007;11(4):335–347.
15. Covello KL, Kehler J, Yu H, et al. HIF-2 $\alpha$  regulates Oct-4: effects of hypoxia on stem cell function, embryonic development, and tumor growth. *Genes Dev*. 2006;20(5):557–570.
16. Wang Y, Yao J, Meng H, et al. A novel long non-coding RNA, hypoxia-inducible factor-2 $\alpha$  promoter upstream transcript, functions as an inhibitor of osteosarcoma stem cells in vitro. *Mol Med Rep*. 2015;11(4):2534–2540.
17. Zhang CP, Zhu LL, Zhao T, et al. Characteristics of neural stem cells expanded in lowered oxygen and the potential role of hypoxia-inducible factor-1 $\alpha$ . *Neurosignals*. 2006–2007;15(5):259–265.
18. McCord AM, Jamal M, Shankavaram UT, Lang FF, Camphausen K, Tofilon PJ. Physiologic oxygen concentration enhances the stem-like properties of CD133+ human glioblastoma cells in vitro. *Mol Cancer Res*. 2009;7(4):489–497.
19. Mazumdar J, Dondeti V, Simon MC. Hypoxia-inducible factors in stem cells and cancer. *J Cell Mol Med*. 2009;13(11–12):4319–4328.
20. Mathieu J, Zhang Z, Zhou W, et al. HIF induces human embryonic stem cell markers in cancer cells. *Cancer Res*. 2011;71(13):4640–4652.

### OncoTargets and Therapy

### Publish your work in this journal

OncoTargets and Therapy is an international, peer-reviewed, open access journal focusing on the pathological basis of all cancers, potential targets for therapy and treatment protocols employed to improve the management of cancer patients. The journal also focuses on the impact of management programs and new therapeutic agents and protocols on

Submit your manuscript here: <http://www.dovepress.com/oncotargets-and-therapy-journal>

### Dovepress

patient perspectives such as quality of life, adherence and satisfaction. The manuscript management system is completely online and includes a very quick and fair peer-review system, which is all easy to use. Visit <http://www.dovepress.com/testimonials.php> to read real quotes from published authors.