

Persistence and costs with subcutaneous TNF-alpha inhibitors in immune-mediated rheumatic disease stratified by treatment line

Axel Svedbom¹
Johan Dalén¹
Christopher M Black²
Sumesh Kachroo²

¹Mapi Group, Stockholm, Sweden;
²Merck & Co., Inc., Kenilworth,
NJ, USA

Objectives: The objectives of this study were to 1) describe and compare treatment persistence with first- and second-line subcutaneous tumor necrosis factor-alpha inhibitors (SC-TNFis) in patients with ankylosing spondylitis (AS), psoriatic arthritis (PsA), or rheumatoid arthritis (RA) (collectively immune-mediated rheumatic disease) in Sweden and 2) estimate and contrast health care costs in the two groups.

Methods: Patients who initiated their first or second SC-TNFi between May 6 2010 and December 12 2012 were identified from the Prescribed Drug Register. Persistence was estimated using survival analysis. Costs comprised specialized outpatient care, inpatient care, and medication. The persistence analysis was stratified by immune-mediated rheumatic disease diagnosis.

Results: A total of 4,903 patients treated with their first and 845 patients treated with their second SC-TNFi were identified. Baseline characteristics differed between the two groups. Therefore, propensity score matching analysis was implemented. Second-line patients were matched to first-line patients, and four cohort pairs (AS, PsA, RA, and all diagnoses combined) were generated. Patients treated with their first SC-TNFi had statistically significant higher persistence than patients treated with their second SC-TNFi in PsA ($P=0.036$), RA ($P=0.048$), and all diagnoses combined ($P<0.001$) but not in AS ($P=0.741$). Patients who were treated with their second SC-TNFi incurred higher costs than patients treated with their first SC-TNFi.

Conclusion: Overall, persistence to the first SC-TNFi was higher than persistence to the second SC-TNFi. Furthermore, the second SC-TNFi was associated with higher costs than the first SC-TNFi. Therefore, prescribing the SC-TNFi with the best long-term persistence first may be beneficial.

Keywords: persistence, rheumatic disease, biologics, rheumatoid arthritis, psoriatic arthritis, ankylosing spondylitis

Introduction

Ankylosing spondylitis (AS), psoriatic arthritis (PsA), and rheumatoid arthritis (RA) are chronic progressive immune-mediated rheumatic diseases (IMRDs) resulting in pain, deformity, and disability.¹ IMRDs confer substantial humanistic and economic burden.^{2,3}

The advent of biologic medications such as subcutaneous tumor necrosis factor-alpha inhibitors (SC-TNFis) has transformed the management of IMRDs.⁴ Despite the benefits of biologic treatment, a significant proportion of patients with IMRDs fail to respond, lose response, or experience adverse events with first-line biologic treatment and may therefore require treatment with other biologics.⁵

Correspondence: Sumesh Kachroo
Merck & Co., Inc., 126 E. Lincoln Avenue,
Rahway, NJ 07065, USA
Tel +1 732 594 3847
Fax +1 732 594 4910
Email sumesh.kachroo@merck.com

A number of biologics, including SC-TNFis, have shown efficacy as second-line biologics in randomized controlled trials (RCTs),^{6–10} albeit no RCT has directly compared the efficacies of second-line biologic treatments.⁵ There are several important considerations for the choice of subsequent-line biologic treatment, including diagnosis, patient preferences, comorbidities, and serum status.⁵ For some patients, the best option may be treatment with sequential SC-TNFis.^{11–13}

In IMRDs, treatment persistence can be used as a proxy for drug effectiveness, safety, and treatment satisfaction.^{14–16} Improved understanding of treatment persistence with sequential TNFis may aid clinicians and patients in decision making and improve accuracy of the expected treatment results. Furthermore, information on health care resource utilization (HCRU) cost consequences of sequential SC-TNFis may guide formularies and other payers on optimal funding decisions. From a payer perspective, high persistence may be considered to drive drug costs. Therefore, exploring total HCRU costs by treatment line may be important to describe the long-term cost implications of treatment persistence.

Numerous studies have described persistence to first-line SC-TNFi (first-line patients) or second-line SC-TNFis (second-line patients) in RA, PsA, and AS. However, only a handful of studies have compared persistence between first- and second-line patients in IMRDs,^{17–26} and to the best of our knowledge no study has compared and contrasted persistence in first- and second-line SC-TNFis among IMRDs. Similarly, to the best of our knowledge, no study has formally compared costs between first- and second-line SC-TNFis in IMRDs. Therefore, the aim of this retrospective administrative register study was to 1) describe and compare treatment persistence in first- and second-line SC-TNFi patients with IMRD in Sweden and 2) compare and contrast health care costs in first- and second-line SC-TNFi patients.

Methods

Data sources

This retrospective administrative register study was based on pseudonymized data from registers controlled by the National Board of Health and Welfare (NBHW), a Swedish governmental agency with population-based registers on health care accessible for research. All registers in this study have been used extensively in population-based health care research.

The Prescribed Drug Register (PDR) is a population-based register with all prescribed medications dispensed in Swedish pharmacies from July 1, 2005. The register captures

data on date of prescription and date of dispense, the specialty of the prescriber, anatomical therapeutical chemical code, defined daily dose, package size, and prescription instructions. The quality of the PDR is high, with the loss of patient information estimated to be <1%.²⁷

The National Patient Register (NPR) is a population-based register on all inpatient and specialized outpatient care in Sweden. Data on inpatient care are captured from the 1960s, and data on outpatient care are available since 2001. By law, health care providers need to report data on visits to specialized outpatient and inpatient care to the NPR. The quality of the NPR is high, with more than 99% of all somatic (including surgery) and psychiatric hospital discharges registered.²⁸

The Causes of Death Register (CDR) is a population-based register on all deaths and their underlying causes in Sweden with data available since 1961. The proportion of missing values in CDR has been estimated at ~1%, and the register has been extensively used for registry research.²⁹

The NBHW performed the data extraction and pseudonymization of the data.

Study design and patient selection

All patients who filled at least one prescription of an SC-TNFi (adalimumab, certolizumab pegol, etanercept, or golimumab) from 1 July, 2005 to January 1, 2013 were identified from the PDR. The study population was derived from the patients identified in the PDR based on inclusion and exclusion criteria designed to identify an adult population who filled a prescription for a new SC-TNFi for treatment of IMRD after the date (May 6, 2010) when all currently approved SC-TNFis were included in the Swedish reimbursement system. The included patients were classified by IMRD-diagnosis. Patients were defined as having either AS (ICD-10: M08.1, M45, M46.1, M46.8, and M46.9), PsA (ICD-10: L40.5, M07.0, M07.1, M07.2, and M07.3), or RA (ICD-10: M05.8, M05.9, M06.0 M06.9, and M12.3). Patients without a registered IMRD diagnosis were either defined as having “other arthritis” (ICD-10: M13) or were left undefined. Furthermore, patients were stratified into first- and second-line SC-TNFi cohorts based on prior SC-TNFi exposure. Patients who filled their first prescription for their first SC-TNFi were defined as first-line patients, whereas patients who filled their first prescription for their second SC-TNFi were defined as second-line patients. Patients were indexed at the first prescription of the relevant treatment course and patients were included in one group only. Details on inclusion

and exclusion criteria and algorithms for stratification are provided in Supplementary material.

Figure 1 provides an overview of the study design. Baseline characteristics were measured during a period of 12 months before the index date. To ensure that patients had at least 12 months of HCRU follow-up data available, analyses were restricted to patients who were indexed prior to January 1, 2013. The reason for this was that HCRU data (with the exception for prescriptions) were available till December 31, 2013 only.

Study outcomes

In accordance with the ISPOR Medication Compliance and Persistence Work Group, persistence was defined as the “duration of time from initiation to discontinuation of therapy.”³⁰ Persistence of the relevant treatment was measured from the date the patient filled the index prescription until the end of the duration of the last prescription. Durations of individual prescriptions were derived by multiplying a standard defined daily dose with the number of packages dispensed. Patients were allowed to have gaps between filled prescriptions, but were defined as nonpersistent if they had a gap exceeding 60 days (the “grace period”). The Swedish pharmacy system allows patients to refill prescriptions when two-thirds of the previous prescription has been consumed

(eg, after two months of a three-month prescription) and patients may thus accumulate medication. Therefore, patients were permitted to accumulate medication from overlapping prescriptions and use it to cover future gaps between filled prescriptions.

HCRU and associated costs were captured in the PDR and NPR and comprised hospitalizations, outpatient specialist visits, and medication (stratified by treatment type: SC-TNFi, traditional disease-modifying antirheumatic drugs [DMARDs], and non-DMARDs). Costs of outpatient visits and hospitalizations were derived from DRG weights or, if a DRG weight had not been assigned, simple mean imputation. Medication costs were obtained from the PDR, which captures the costs of all dispensed prescriptions.

Statistical analysis

All study variables, including baseline covariates and outcome measures, were analyzed descriptively. Frequencies and percentages were provided for dichotomous variables. Means and standard deviations were provided for continuous variables. Results were presented for all included patients by index treatment line (first or second SC-TNFi). Comparisons of baseline characteristics and outcome measures between the study cohorts were also conducted. Appropriate tests (eg, *t*-test, Mann Whitney *U*-test,

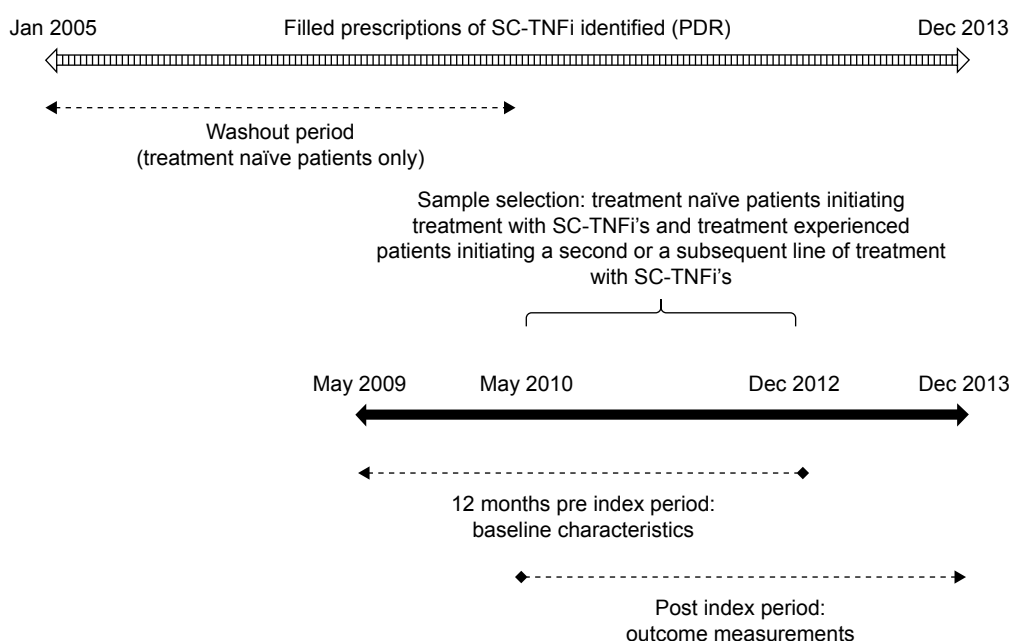


Figure 1 Study design: all patients who filled at least one prescription of an SC-TNFi from July 1, 2005 to January 1, 2013 were identified from the PDR. Among the identified patients, only those who initiated their first or second SC-TNFi during the sample selection window (May 2010 to December 2012) were included in the analysis. Patients were indexed on the date of the first dispensed prescription of the relevant SC-TNFi. Furthermore, patients were required to have at least 12 months of observation time before and after the index date. Baseline characteristics were measured in the 12 months prior to indexation, and outcomes were measured for at least 12 months during follow-up.

Abbreviations: SC-TNFi, second-line subcutaneous tumor necrosis factor- α inhibitor; PDR, Prescribed Drug Register.

chi-square test, Kruskal–Wallis test) were implemented based on the distribution of the relevant variable.

Time-to-event was derived using nonparametric survival analysis. Kaplan–Meier time-to-event (survival) functions were estimated with relevant treatment events as failure, and the proportions of patients having experienced an event at specific time points were derived from the failure rates. Estimates of persistence were derived directly from the survival functions.

To account for selection bias, comparisons of persistence between first- and second-line patients were conducted on propensity score matched (PSM) cohorts. In addition, cost comparisons were conducted on PSM cohorts of first and second line patients persistent at 6 months. PSM is a method that aims to reduce confounding bias by matching patients on the predicted probability of belonging to a certain group.³¹ Patients initiating a second-line SC-TNFi were defined as cases and matched on propensity score to patients who initiated a first-line SC-TNFi. A logit model was used to derive the propensity score in terms of predicted probability of initiating second-line SC-TNFi treatment given the baseline characteristics presented in Table 1. Pairs were matched using a greedy algorithm with 5 to 1 digit matching. As

suggested by Austin, Ho, Imai et al, balance across strata was evaluated using standardized differences in covariates pre- and post-matching rather than *P*-values.^{32–34} Rosenbaum and Rubin's suggested definition of balance was applied, ie, pre- and post-standardized differences below 0.1 were accepted.³¹

Differences in persistence between first- and second-line treatment cohorts were assessed using long-rank tests between PSM cohorts. Differences in persistence to first and second SC-TNFis across indications were assessed by comparing the median differences in time to nonpersistence between PSM matched pairs across the three indications; the statistical significance of the observed differences were tested using a Kruskal–Wallis test.

Statistical analyses were conducted using SAS software (SAS for XP PRO, Release 9.2 TS2 M3; SAS Institute Inc. Cary, NC, USA).

Results

The numbers of first- and second-line SC-TNFi patients fulfilling the inclusion/exclusion criteria were 4,903 and 845, respectively (Supplementary material). Compared to first-line patients, second-line patients were on average two years older, more likely to be hospitalized, but less likely to have concomitant treatment with either nonsteroidal anti-inflammatory drugs or nonbiologic DMARDs (Table 1). The distribution of IMRD diagnoses differed between the two groups (*P*=0.015), with the largest absolute difference observed for the proportion of patients diagnosed with RA (5.0 percentage points, Table 1).

Given the systematic differences in patient characteristics between first- and second-line patients as already described, PSM analyses were implemented. Second-line patients were matched to first-line patients, and four successfully balanced cohort pairs, AS, PsA, RA, and all diagnoses combined, were generated with 169, 146, 460, and 839 patients in each cohort, respectively (Table 2).

Comparing persistence rates between the PSM cohorts in the four strata showed that first-line patients had significantly higher persistence than second-line patients in PsA (*P*=0.036), RA (*P*=0.048), and all diagnoses (*P*<0.001) but not in AS (*P*=0.741) (Figure 2, Table S1). Median survival times expressed as months from initiation of index therapy for first- and second-line patients were estimated at 16.0 vs 11.1 in PsA; 12.4 vs 11.2 in AS; 12.6 vs 9.4 in RA; and 15.2 vs 9.6 in all patients. The difference in median time to non-persistence between patients on first and second-line therapy did not differ significantly across the three indications (*P*=0.22).

Table 1 Patient characteristics at initiation of first- and second-line SC-TNFi

	First line N=4,903	Second line N=845	P-value
Age (years) mean (SD)	50.3 (15.0)	51.9 (13.5)	0.004
Female, n (%)	3,053 (62.3)	582 (68.9)	<0.001
Index year			
Indexed 2010, n (%)	1,194 (24.4)	268 (31.7)	
Indexed 2011, n (%)	1,926 (39.3)	321 (38.0)	
Indexed 2012, n (%)	1,783 (36.4)	256 (30.3)	
Index medication			<0.001
Adalimumab, n (%)	1,823 (37.2)	316 (37.4)	
Certolizumab pegol, n (%)	622 (12.7)	140 (16.6)	
Etanercept, n (%)	1,704 (34.8)	202 (23.9)	
Golimumab, n (%)	754 (15.4)	187 (22.1)	
IMRD diagnosis, n (%)			0.015
PsA	898 (18.3)	146 (17.3)	
AS	1,029 (21.0)	169 (20.0)	
RA	2,563 (52.3)	484 (57.3)	
Other arthritis	91 (1.9)	9 (1.1)	
Undefined	322 (6.6)	37 (4.4)	
CCI, mean (SD)	0.75 (1.04)	0.81 (1.21)	0.139
Co-medication			
NSAIDs, n (%)	3,442 (70.2)	533 (63.1)	<0.001
DMARDs, n (%)	3,849 (78.5)	526 (62.2)	<0.001
Hospitalized, n (%)	932 (19.0)	199 (23.6)	0.002

Abbreviations: SC-TNFi, second-line subcutaneous tumor necrosis factor- α inhibitor; SD, standard deviation; IMRD, immune-mediated rheumatic disease; PsA, psoriatic arthritis; AS, ankylosing spondylitis; RA, rheumatoid arthritis; CCI, Charlson Comorbidity Index; NSAID, non-steroidal anti-inflammatory drug; DMARD, disease-modifying antirheumatic drug.

Table 2 Patient characteristics at initiation of first- and second-line SC-TNFi in propensity score matched cohorts

	AS		PsA		RA		All diagnoses	
	First line N=169	Second line N=169	First line N=146	Second line N=146	First line N=460	Second line N=460	First line N=839	Second line N=839
Age (years) mean (SD)	47.7 (12.6)	47.1 (12.0)	53.6 (10.9)	52.4 (11.6)	55.6 (13.1)	53.8 (14.2)	52.7 (14.6)	51.9 (13.5)
Female, n (%)	75 (44.4)	78 (46.2)	82 (56.2)	85 (58.2)	371 (80.7)	370 (80.4)	592 (70.6)	577 (68.8)
Index year								
Indexed 2010, n (%)	48 (28.4)	50 (29.6)	41 (28.1)	42 (28.8)	150 (32.6)	153 (33.3)	253 (30.2)	262 (31.2)
Indexed 2011, n (%)	65 (38.5)	64 (37.9)	59 (40.4)	59 (40.4)	179 (38.9)	174 (37.8)	340 (40.5)	321 (38.3)
Indexed 2012, n (%)	56 (33.1)	55 (32.5)	46 (31.5)	45 (30.8)	131 (28.5)	133 (28.9)	246 (29.3)	256 (30.5)
CCI, mean (SD)	0.21 (0.82)	0.14 (0.62)	0.23 (0.92)	0.21 (0.73)	1.22 (0.88)	1.26 (1.12)	0.85 (1.07)	0.81 (1.21)
Co-medication								
NSAIDs, n (%)	136 (80.5)	114 (67.5)	106 (72.6)	99 (67.8)	296 (64.3)	280 (60.9)	597 (71.2)	529 (63.1)
DMARDs, n (%)	69 (40.8)	66 (39.1)	98 (67.1)	96 (65.8)	335 (72.8)	335 (72.8)	539 (64.2)	526 (62.7)
Hospitalized, n (%)	34 (20.1)	36 (21.3)	24 (16.4)	22 (15.1)	121 (26.3)	119 (25.9)	201 (24.0)	197 (23.5)

Notes: No statistically significant difference was observed within each cohort pair. Mean standardized difference was below 0.1 within each cohort pair.

Abbreviations: SC-TNFi, second-line subcutaneous tumor necrosis factor-alpha inhibitor; AS, ankylosing spondylitis; PsA, psoriatic arthritis; RA, rheumatoid arthritis; SD, standard deviation; CCI, Charlson Comorbidity Index; NSAID, non-steroidal anti-inflammatory drug; DMARD, disease-modifying antirheumatic drug.

In patients who remained persistent with treatment for at least six months, the annualized costs in patients treated with their first and second SC-TNFi were estimated at USD 10,898 and USD 11,328, respectively (difference: USD 860, $P<0.001$). During this period, mean SC-TNFi costs

were numerically lower in second-line patients compared to first-line patients (USD 185, $P=0.095$). Excluding costs of SC-TNFi, there was no statistically significant difference in costs between first- and second-line patients in the six months preceding indexation (Table 3).

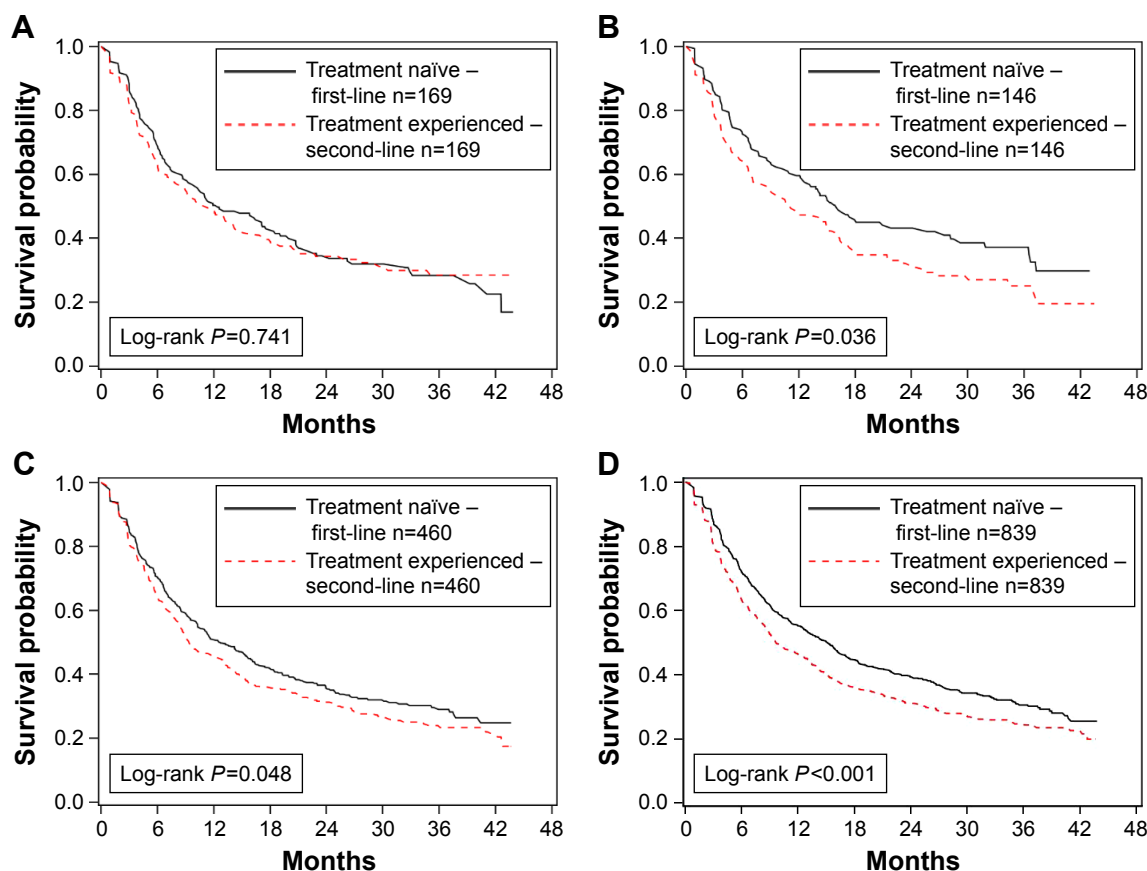


Figure 2 Propensity score matched analysis of persistence in first- and second-line SC-TNFi patients. (A) Analysis in patients with ankylosing spondylitis of (B) psoriatic arthritis, (C) rheumatoid arthritis, and (D) all patients.

Abbreviation: SC-TNFi, second-line subcutaneous tumor necrosis factor-alpha inhibitor.

Table 3 Annualized health care resource utilization costs in first- and second-line SC-TNFi patients persistent at least six months

	First line, N=393	Second line, N=393	P-value
HCRU costs 6 months prior to index date (USD)			
Specialized outpatient care, mean (SD)	1,315 (1,036)	1,342 (1,292)	0.36
Inpatient care, mean (SD)	885 (2,548)	994 (3,219)	0.628
Non-DMARD medication, mean (SD)	299 (544)	347 (536)	0.07
SC-TNFi treatment, mean (SD)	0 (0)	3,968 (3,448)	<0.001
Traditional DMARD treatment, mean (SD)	101 (263)	83 (193)	0.099
Total, mean (SD)	2,600 (3,183)	6,734 (4,940)	<0.001
HCRU costs 6 months post index date (USD)			
Specialized outpatient care, mean (SD)	862 (703)	1,116 (1,067)	0.005
Inpatient care, mean (SD)	454 (1,708)	720 (2,679)	0.395
Non-DMARD medication, mean (SD)	278 (502)	350 (448)	<0.001
SC-TNFi treatment, mean (SD)	9,233 (1,801)	9,048 (2,026)	0.095
Traditional DMARD treatment, mean (SD)	70 (188)	94 (236)	0.62
Total, mean (SD)	10,898 (2,748)	11,328 (3,791)	<0.001

Abbreviations: SC-TNFi, second-line subcutaneous tumor necrosis factor- α inhibitor; HCRU, Health Care Resource Utilization; SD, standard deviation; DMARD, disease-modifying antirheumatic drug.

Discussion

This study shows that persistence to the first SC-TNFi is higher than persistence to the second SC-TNFi in RA ($P=0.048$) and PsA ($P=0.036$), but not in AS ($P=0.741$). Across all patients, the difference in median time to nonpersistence between first- and second-line patients was estimated at 5.6 months, with no statistically significant difference observed among the three indications ($P=0.22$). Second-line patients incurred USD 860 ($P<0.001$) more in annualized HCRU costs compared to first-line patients. The analyses were conducted using propensity score matching, adjusting for observable differences at treatment start.

Comparing absolute persistence estimates across studies is challenging given discrepancies in outcome definitions, patient populations, care settings, and statistical methodologies.³⁰ However, the findings from this study supports the notion that first-line patients have higher persistence than second-line patients in RA^{17,21,23,26} and PsA.^{18,19,26} For AS, the impact of prior TNFi exposure on persistence differs among publications,^{20–22,24–26} and this study supports the notion that prior SC-TNFi exposure may not be associated with lower persistence. One potential reason for the differences in findings among the studies is the definition of AS. Saevarsdottir et al showed that persistence for AS, but not for other spondyloarthritides, was modified by prior biologic exposure,²⁶ indicating that the delineation between AS and non-radiographic axial spondyloarthritis (nr-AxSpA) may be important; albeit in the absence of an ICD-10 code for nr-AxSpA, physicians may use M45.0–M45.9 (AS) codes³⁵ for nr-AxSpA, resulting in that nr-AxSpA and AS cannot be distinguished in analysis of administrative data

where patients are stratified by ICD-10 diagnosis. Another potential reason for the difference in findings between this study and the studies that found lower persistence in second-line patients compared to first-line patients with AS is that this study was conducted using PSM and thereby addressed potential selection bias, whereas the other studies did not adjust for such bias.

This study adds to the existing body of literature by having conducted analyses on administrative data, estimating persistence rates from refill compliance instead of patient reported data, thereby potentially reducing reporting bias. Furthermore, the study controls for differences in patients characteristics at treatment initiation, which to the best of our knowledge, has only been done in one previous study comparing persistence to SC-TNFi in first- and second-line patients.¹⁷

In terms of costs, the findings from this study indicated that second-line patients incur USD 840 higher costs per year than first-line patients. These results complement a recent US administrative claims data analysis that showed that patients who switched biologic incurred higher costs than patients who did not switch (USD 3,759 vs USD 2,343 per month; $P<0.05$).³⁶ Furthermore a recent Swedish study showed that patients who were nonpersistent incurred USD 1,730 higher costs per year compared to persistent patients.³⁷ Given the findings in this study, it is conceivable that a proportion of the costs associated with nonpersistence to the first SC-TNFi may be driven by the increased costs with second-line treatment.

The reason for the higher persistence and lower costs in first- compared to second-line patients cannot be directly determined from the data in this study; albeit given that

the analyses were conducted using a PSM framework, the observed differences should be independent of sex, age, index year, treatment, co-medication, and hospitalization at treatment initiation. One potential reason is that patients who discontinue first-line SC-TNFi may experience a flare and therefore have high disease activity, a factor that has been associated with lower persistence.¹⁷ Another reason may relate to the production of antibodies that may evolve gradually over time. Regardless of reason, prescribing the SC-TNFi with the best first-line persistence first may generate better long-term outcomes given that the second SC-TNFi is associated with shorter persistence and higher costs than the first SC-TNFi. A recent systematic review and meta-analysis compared persistence to etanercept, adalimumab, and infliximab in RA patients, but noted a dearth of studies including more recently approved agents such as golimumab and certolizumab pegol. To the best of our knowledge, only one such study comparing all available SC-TNFis has been published. The study indicated that golimumab had significantly higher long-term persistence than adalimumab and etanercept and that there was a trend towards better persistence to golimumab compared to certolizumab pegol.³⁷

Long-term real-world persistence data are particularly important given the external validity of long-term persistence estimates from extensions of RCTs. Patients in RCTs differ systematically from patients in clinical practice.³⁸ In addition, patients in RCTs may change their behavior due to the fact that they participate in a study.³⁸ These factors may compromise external validity, and it has been shown that adherence to therapy on average is higher in clinical trials than in clinical practice.³⁹

The main strength of the study is the size and coverage of the data. The PDR captures more than 99% of all prescriptions of SC-TNFi in Sweden.⁴⁰ Hence, the study includes virtually all patients who initiated a first- or second-line SC-TNFi in Sweden during the sample selection window (May 7, 2010 to December 31, 2012). Therefore, the study could identify a sufficient number of patients on first- and second-line SC-TNFi across different indications in spite of the relatively limited sample selection window. The study has a number of limitations. The study used administrative data and therefore persistence was estimated using prescription refills, whether the patients actually injected the medications or not could not be determined in the data. Another limiting aspect of administrative data is that clinician- and patient-reported outcomes such as Health Assessment Questionnaire, Disease Activity Score 28, or EuroQol 5 Dimensions are not available. Hence, effectiveness and

reasons for discontinuation could not be determined directly. Limitations specific to this study include that the PDR does not record information on exact dosage and that the NPR only registers visits to outpatient specialists, resulting in that primary care and nurse visits are not captured in the data. Furthermore, out of pocket costs are not included in the study, albeit these should be limited reflecting that the Swedish government reimburses any costs for prescribed drugs exceeding SEK 1,100 (approximately USD 140) per year. Furthermore, infliximab is predominately administered during office visits in Sweden, resulting in that the drug is insufficiently captured in the PDR.⁴⁰ Hence, some patients in the study may previously have been treated with infliximab. Finally, it should be noted that this study was conducted on Swedish administrative register data and the findings may not be generalizable or applicable to other settings.

There is a need for further research in this field. Firstly, real-world data comparing effectiveness and persistence among all currently available SC-TNFis would be valuable. Secondly, studies capturing additional cost categories could more precisely estimate cost consequences of first- and second-line SC-TNFi treatment. Finally, hybrid studies linking clinical registers to administrative data would allow for more accurate assessment of persistence, compliance, effectiveness, and costs than using either data type in isolation.

In conclusion, this study indicates that treatment with sequential SC-TNFis is beneficial, albeit on average persistence to the second SC-TNFi can be expected to be lower than persistence to the first SC-TNFi. Furthermore, the second SC-TNFi was associated with higher costs than the first SC-TNFi. Therefore, prescribing the SC-TNFi with the best long-term persistence first may be beneficial.

Compliance with ethical standards

Ethical approval

All procedures performed in studies involving human participants were in accordance with the ethical standards of the institutional and/or national research committee and with the 1964 Helsinki declaration and its later amendments or comparable ethical standards. The study was granted an ethical permit by the Regional Ethical Review Board in Stockholm. The study was approved by the NBHW. For this type of study, formal consent is not required according to Swedish law (Lag [1998:543] om hälsodataregister).

Disclosure

This study was funded by Merck & Co., Inc., Kenilworth, NJ USA. AS and JD were paid consultants to Merck through

their employment at Mapi. Mapi have received funding from several pharmaceutical companies involved in the marketing of products for treatment of rheumatic disease. CMB and SK are employees of Merck & Co., Inc., Kenilworth, NJ USA, and hold stock and options. The authors report no other conflicts of interest in this work.

References

1. Silman AJ, Hochberg MC. Epidemiology of the rheumatic diseases. New York, USA: Oxford University Press; 2001.
2. Huscher D, Merkesdal S, Thiele K, Zeidler H, Schneider M, Zink A; German Collaborative Arthritis Centres. Cost of illness in rheumatoid arthritis, ankylosing spondylitis, psoriatic arthritis and systemic lupus erythematosus in Germany. *Ann Rheum Dis*. 2006;65(9):1175–1183.
3. Salaffi F, Carotti M, Gasparini S, Intorcchia M, Grassi W. The health-related quality of life in rheumatoid arthritis, ankylosing spondylitis, and psoriatic arthritis: a comparison with a selected sample of healthy people. *Health Qual Life Outcomes*. 2009;7:25.
4. Stevens Seth R, Chang Ting H. History of development of TNF inhibitors. Basel, Switzerland: Springer; 2006:9–22.
5. Navarro Coy NC, Brown S, Bosworth A, et al. The ‘Switch’ study protocol: a randomised-controlled trial of switching to an alternative tumour-necrosis factor (TNF)-inhibitor drug or abatacept or rituximab in patients with rheumatoid arthritis who have failed an initial TNF-inhibitor drug. *BMC Musculoskelet Disord*. 2014;15:452.
6. Cohen SB, Emery P, Greenwald MW, et al. Rituximab for rheumatoid arthritis refractory to anti-tumour necrosis factor therapy: results of a multicenter, randomized, double-blind, placebo-controlled, phase III trial evaluating primary efficacy and safety at twenty-four weeks. *Arthritis Rheum*. 2006;54(9):2793–2806.
7. Emery P, Keystone E, Tony HP, et al. IL-6 receptor inhibition with tocilizumab improves treatment outcomes in patients with rheumatoid arthritis refractory to anti-tumour necrosis factor biologicals: results from a 24-week multicentre randomised placebo-controlled trial. *Ann Rheum Dis*. 2008;67(11):1516–1523.
8. Genovese MC, Becker J-C, Schiff M, et al. Abatacept for rheumatoid arthritis refractory to tumor necrosis factor α inhibition. *N Engl J Med*. 2005;353(11):1114–1123.
9. Smolen JS, Kay J, Doyle MK, et al. Golimumab in patients with active rheumatoid arthritis after treatment with tumour necrosis factor α inhibitors (GO-AFTER study): a multicentre, randomised, double-blind, placebo-controlled, phase III trial. *Lancet*. 2009;374(9685):210–221.
10. Weinblatt ME, Fleischmann R, Huizinga TW, et al. Efficacy and safety of certolizumab pegol in a broad population of patients with active rheumatoid arthritis: results from the REALISTIC phase IIIb study. *Rheumatology*. 2012;51(12):2204–2214.
11. Braun J, van den Berg R, Baraliakos X, et al. 2010 update of the ASAS/EULAR recommendations for the management of ankylosing spondylitis. *Ann Rheum Dis*. 2011;70(6):896–904.
12. Smolen JS, Landewé R, Breedveld FC, et al. EULAR recommendations for the management of rheumatoid arthritis with synthetic and biological disease-modifying antirheumatic drugs: 2013 update. *Ann Rheum Dis*. 2013;0:1–18.
13. Gossec L, Smolen JS, Ramiro S, et al. European League Against Rheumatism (EULAR) recommendations for the management of psoriatic arthritis with pharmacological therapies: 2015 update. *Ann Rheum Dis*. 2015. doi:10.1136/annrheumdis-2015-208337.
14. Aletaha D, Smolen JS. Effectiveness profiles and dose dependent retention of traditional disease modifying antirheumatic drugs for rheumatoid arthritis. An observational study. *J Rheumatol*. 2002;29(8):1631–1638.
15. Fries JF. Effectiveness and toxicity considerations in outcome directed therapy in rheumatoid arthritis. *J Rheumatol Suppl*. 1996;44:102–106.
16. Pincus T, Marcum SB, Callahan LF. Longterm drug therapy for rheumatoid arthritis in seven rheumatology private practices: II. Second line drugs and prednisone. *J Rheumatol*. 1992;19(12):1885–1894.
17. Chatzidionysiou K, Kristensen LE, Eriksson J, Askling J, van Vollenhoven R; Group Artis. Effectiveness and survival-on-drug of certolizumab pegol in rheumatoid arthritis in clinical practice: results from the national Swedish register. *Scand J Rheumatol*. 2015;44(6):431–437.
18. Fagerli KM, Lie E, van der Heijde D, et al. Switching between TNF inhibitors in psoriatic arthritis: data from the NOR-DMARD study. *Ann Rheum Dis*. 2013;72:1840–1844.
19. Glinthorg B, Østergaard M, Krogh NS, et al. Clinical response, drug survival, and predictors thereof among 548 patients with psoriatic arthritis who switched tumor necrosis factor α inhibitor therapy: results from the Danish Nationwide DANBIO Registry. *Arthritis Rheum*. 2013;65(5):1213–1223.
20. Glinthorg B, Østergaard M, Krogh NS T, et al. Clinical response, drug survival and predictors thereof in 432 ankylosing spondylitis patients after switching tumour necrosis factor α inhibitor therapy: results from the Danish nationwide DANBIO registry. *Ann Rheum Dis*. 2013;72(7):1149–1155.
21. Gomez-Reino JJ, Carmona L; Group BIOBADASER. Switching TNF antagonists in patients with chronic arthritis: an observational study of 488 patients over a four-year period. *Arthritis Res Ther*. 2006;8(1):1–7.
22. Gulyas K, Bodnar N, Nagy Z, et al. Real-life experience with switching TNF- α inhibitors in ankylosing spondylitis. *Eur J Health Econ*. 2014;15(1):93–100.
23. Hyrich KL, Lunt M, Watson KD, Symmons DP, Silman AJ. Outcomes after switching from one anti-tumour necrosis factor α agent to a second anti-tumour necrosis factor α agent in patients with rheumatoid arthritis: results from a large UK national cohort study. *Arthritis Rheum*. 2007;56(1):13–20.
24. Lie E, van der Heijde D, Uhlig T, et al. Effectiveness of switching between TNF inhibitors in ankylosing spondylitis: data from the NOR-DMARD register. *Ann Rheum Dis*. 2011;70(1):157–163.
25. Rosales-Alexander JL, Aznar JB, Pérez-Vicente S, Magro-Checa C. Drug survival of anti-tumour necrosis factor α therapy in spondyloarthropathies: results from the Spanish emAR II Study. *Rheumatology*. 2015.
26. Saevardottir S, Santacatterina M, Turesson C, Forsblad H, Jacobsson L, Lindblad S. Clinical characteristics and outcome of golimumab treatment differs between bio-naïve and patients previously exposed to biologicals. Nationwide results on rheumatoid arthritis (RA), psoriatic arthritis (PSA), ankylosing spondylitis (AS) and other spondyloarthritides (SPA). *Arthritis Rheum*. 2014;66:S705.
27. Pharmaceuticals – statistics for 2014. The National Board of Health and Welfare (Socialstyrelsen). Available from: <https://www.socialstyrelsen.se/Lists/Artikelkatalog/Attachments/19768/2015-3-17.pdf>. Accessed August 20, 2015.
28. Ludvigsson JF, Andersson E, Ekblom A, et al. External review and validation of the Swedish national inpatient register. *BMC Public Health*. 2011;11:450.
29. The National Board of Health and Welfare (Socialstyrelsen). Causes of Death 2013. Available from: <https://www.socialstyrelsen.se/Lists/Artikelkatalog/Attachments/19736/2015-2-42.pdf>. Accessed August 20, 2015.
30. Cramer JA, Roy A, Burrell A, et al. Medication compliance and persistence: terminology and definitions. *Value Health*. 2008;11(1):44–47.
31. Rosenbaum PR, Rubin DB. Constructing a control group using multivariate matched sampling methods that incorporate the propensity score. *American Statistician*. 1985;39(1):33–38.

32. Austin PC. Balance diagnostics for comparing the distribution of baseline covariates between treatment groups in propensity-score matched samples. *Statistics Med.* 2009;28(25):3083–3107.
33. Ho DE, Imai K, King G, Stuart EA. Matching as nonparametric pre-processing for reducing model dependence in parametric causal inference. *Polit Anal.* 2007;15(3):199–236.
34. Imai K, King G, Stuart EA. Misunderstandings between experimentalists and observationalists about causal inference. *J R Stat Soc Ser A Stat Soc.* 2008;171(2):481–502.
35. Deodhar A, Strand V, Kay J, Braun J. The term ‘non-radiographic axial spondyloarthritis’ is much more important to classify than to diagnose patients with axial spondyloarthritis. *Ann Rheum Dis.* 2016; 75(5):791–794.
36. Meissner B, Trivedi D, You M, Rosenblatt L. Switching of biologic disease modifying anti-rheumatic drugs in patients with rheumatoid arthritis in a real world setting. *J Med Econ.* 2014;17(4):259–265.
37. Dalén J, Svedbom A, Black CM, et al. Treatment persistence among patients with immune-mediated rheumatic disease newly treated with subcutaneous TNF-alpha inhibitors and costs associated with non-persistence. *Rheumatol Int.* 2016:1–9.
38. Koncz T, Pentek M, Brodsky V, Ersek K, Orlewska E, Gulacsi L. Adherence to biologic DMARD therapies in rheumatoid arthritis. *Expert Opin Biol Ther.* 2010;10(9):1367–1378.
39. Osterberg L, Blaschke T. Adherence to medication. *N Engl J Med.* 2005; 353(5):487–497.
40. Neovius M, Sundstrom A, Simard J, et al. Small-area variations in sales of TNF inhibitors in Sweden between 2000 and 2009. *Scand J Rheumatol.* 2011;40(1):8–15.

Supplementary materials

Inclusion/exclusion criteria

For the first-line cohort, patients meeting the following inclusion criterion were selected for study inclusion:

- At least one dispensed prescription of the following second-line subcutaneous tumor necrosis factor-alpha (SC TNF-alpha) blocker during the sample selection window May 1, 2010 to December 31, 2012:
 - Adalimumab
 - Certolizumab pegol
 - Etanercept
 - Golimumab

Patients meeting the inclusion criteria were excluded from the cohort based on the following exclusion criteria:

- Less than 18 years of age on index date
- A filled prescription for the index TNF-alpha inhibitor prior to May 6, 2010
- A registered treatment for a TNF-alpha inhibitor in an outpatient or inpatient setting
- Fewer than twelve months baseline and follow-up periods due to emigration, death, or end of data availability

- A second, third, or fourth line of second-line subcutaneous tumor necrosis factor-alpha inhibitors (SC-TNFis)
- A filled prescription of a SC-TNFi from:
 - a department other than (1) rheumatology, (2) orthopedics, and (3) rehabilitation and
 - a prescriber who was not specialized in rheumatology.

The implementation of the inclusion/exclusion criteria on the population are provided in the Figure S1.

For the second-line cohort, patients meeting the following inclusion criterion were selected for study inclusion:

- At least one dispensed prescription for two of the following SC TNF-alpha blockers, one before and one during the sample selection window May 1, 2010 to December 31, 2012:
 - Adalimumab
 - Certolizumab pegol
 - Etanercept
 - Golimumab

Patients meeting the inclusion criteria were excluded from the cohort based on the following exclusion criteria:

- Less than 18 years of age on index date

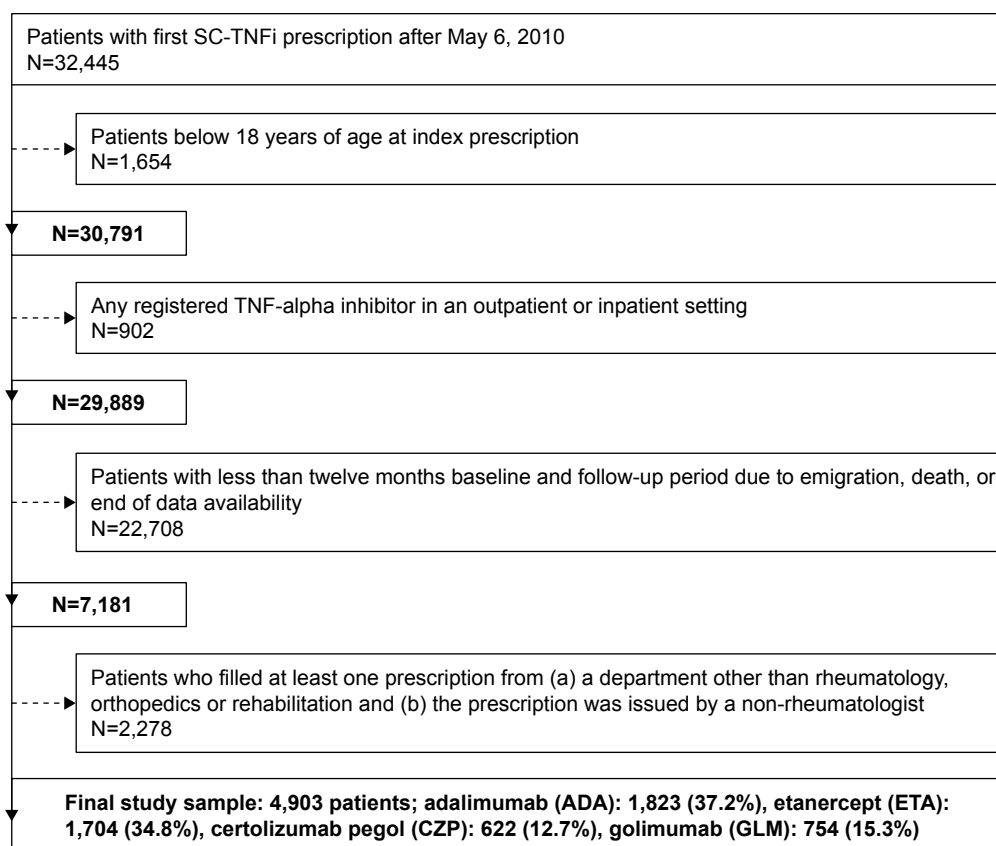


Figure S1 Sequential sample selection first line patients.

Abbreviations: SC-TNFi, second-line subcutaneous tumor necrosis factor-alpha inhibitor; TNF, tumor necrosis factor.

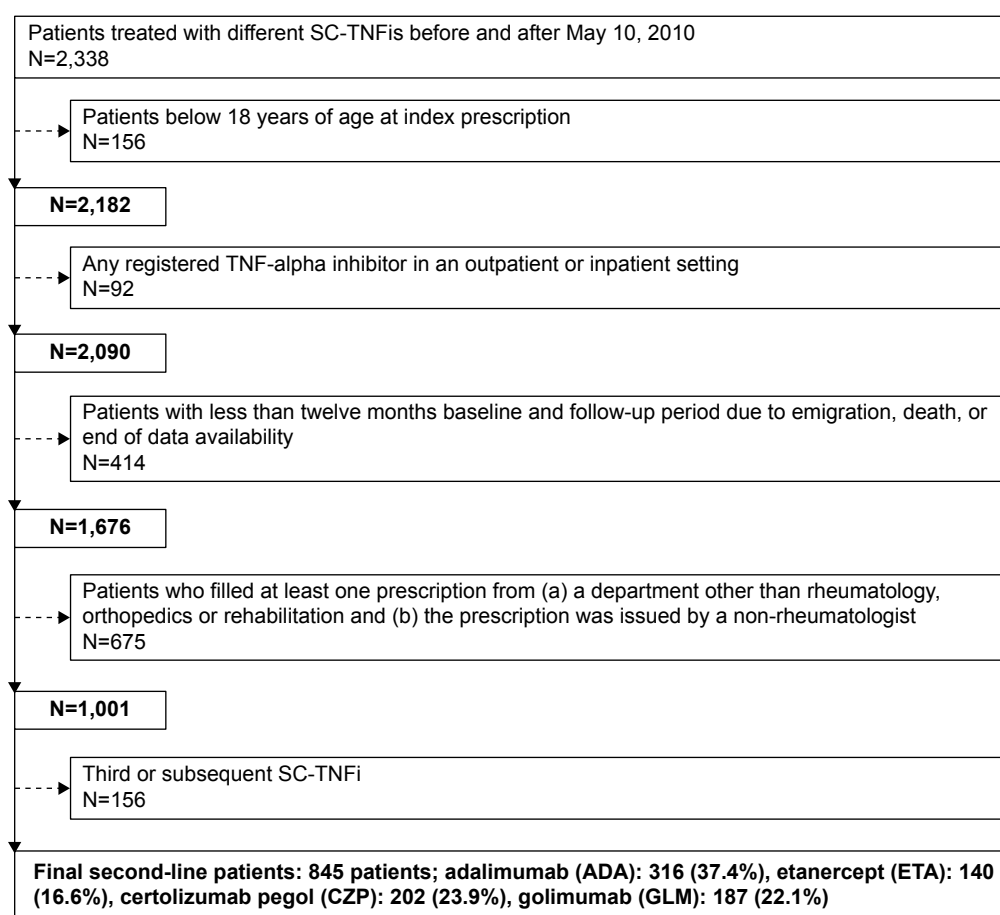


Figure S2 Sequential sample selection second line patients.

Abbreviations: SC-TNFi, second-line subcutaneous tumor necrosis factor-alpha inhibitor; TNF, tumor necrosis factor.

Table S1 Life table for propensity score matched analysis of persistence in first- and second-line SC-TNFi patients with AS, PsA, RA, and all diagnoses

	AS		PsA		RA		All diagnoses	
	First line N=169	Second line N=169	First line N=146	Second line N=146	First line N=460	Second line N=460	First line N=839	Second line N=839
Censored, n (%)	54 (32.0)	56 (33.1)	57 (39.0)	41 (28.1)	152 (33.0)	128 (27.8)	297 (35.4)	239 (28.5)
Failed, n (%)	115 (68.0)	113 (66.9)	89 (61.0)	105 (71.9)	308 (67.0)	332 (72.2)	542 (64.6)	600 (71.5)
Survival time (months)								
Median (K-M)	12.4	11.2	16.0	11.1	12.6	9.4	15.2	9.6
95% CI of median (K-M)	9.3, 18.4	7.8, 14.5	12.4, 27.5	7.1, 16.1	10.5, 15.6	8.5, 12.1	13.0, 16.4	8.9, 11.8
Q1, Q3 (K-M)	5.1, 41.1	4.0, NE	4.9, NE	3.7, 37.1	4.8, 40.4	4.3, 34.4	5.6, NE	3.9, 35.1
Min, max	0.9, 43.9	0.9, 43.5	0.9, 43.0	0.5, 43.5	0.9, 43.7	0.9, 43.7	0.1, 43.8	0.5, 43.7
K-M survival estimates, n at risk, survival probability (95% CI)								
1 Month	n=161, 0.95 (0.91, 0.98)	n=155, 0.92 (0.86, 0.95)	n=138, 0.95 (0.89, 0.97)	n=133, 0.91 (0.85, 0.95)	n=433, 0.94 (0.92, 0.96)	n=432, 0.94 (0.91, 0.96)	n=802, 0.96 (0.94, 0.97)	n=780, 0.93 (0.91, 0.95)
3 Months	n=149, 0.88 (0.82, 0.92)	n=139, 0.82 (0.76, 0.87)	n=126, 0.86 (0.80, 0.91)	n=116, 0.79 (0.72, 0.85)	n=393, 0.85 (0.82, 0.88)	n=375, 0.82 (0.78, 0.85)	n=736, 0.88 (0.85, 0.90)	n=675, 0.80 (0.78, 0.83)
6 Months	n=117, 0.69 (0.62, 0.76)	n=107, 0.63 (0.56, 0.70)	n=107, 0.73 (0.65, 0.80)	n=94, 0.64 (0.56, 0.72)	n=325, 0.71 (0.66, 0.75)	n=295, 0.64 (0.60, 0.68)	n=605, 0.72 (0.69, 0.75)	n=532, 0.63 (0.60, 0.67)
12 Months	n=85, 0.50 (0.43, 0.58)	n=83, 0.49 (0.41, 0.56)	n=87, 0.60 (0.51, 0.67)	n=70, 0.48 (0.40, 0.56)	n=233, 0.51 (0.46, 0.55)	n=210, 0.46 (0.41, 0.50)	n=461, 0.55 (0.52, 0.59)	n=389, 0.46 (0.43, 0.50)
18 Months	n=59, 0.43 (0.35, 0.50)	n=58, 0.40 (0.32, 0.47)	n=59, 0.46 (0.37, 0.54)	n=47, 0.36 (0.28, 0.43)	n=167, 0.42 (0.37, 0.46)	n=141, 0.36 (0.32, 0.40)	n=325, 0.45 (0.41, 0.48)	n=261, 0.36 (0.33, 0.39)

(Continued)

Table S1 (Continued)

	AS		PsA		RA		All diagnoses	
	First line N=169	Second line N=169	First line N=146	Second line N=146	First line N=460	Second line N=460	First line N=839	Second line N=839
24 Months	n=42, 0.35 (0.27, 0.42)	n=40, 0.34 (0.27, 0.42)	n=42, 0.43 (0.35, 0.51)	n=34, 0.32 (0.25, 0.40)	n=118, 0.36 (0.31, 0.40)	n=104, 0.31 (0.27, 0.36)	n=239, 0.39 (0.36, 0.43)	n=188, 0.31 (0.28, 0.34)
30 Months	n=30, 0.32 (0.25, 0.40)	n=26, 0.31 (0.24, 0.39)	n=32, 0.39 (0.30, 0.47)	n=23, 0.28 (0.21, 0.36)	n=76, 0.32 (0.27, 0.37)	n=62, 0.26 (0.22, 0.31)	n=165, 0.34 (0.31, 0.38)	n=119, 0.27 (0.24, 0.30)
36 Months	n=15, 0.28 (0.21, 0.36)	n=16, 0.28 (0.21, 0.36)	n=17, 0.37 (0.29, 0.46)	n=11, 0.25 (0.17, 0.33)	n=46, 0.29 (0.24, 0.34)	n=40, 0.24 (0.20, 0.29)	n=89, 0.31 (0.27, 0.34)	n=70, 0.25 (0.21, 0.28)
42 Months	n=7, 0.23 (0.14, 0.33)	n=5, 0.28 (0.21, 0.36)	n=3, 0.30 (0.20, 0.40)	n=2, 0.20 (0.11, 0.29)	n=14, 0.25 (0.19, 0.31)	n=14, 0.22 (0.17, 0.27)	n=27, 0.25 (0.21, 0.30)	n=22, 0.23 (0.19, 0.26)

Abbreviations: SC-TNFi, second-line subcutaneous tumor necrosis factor- α inhibitor; AS, ankylosing spondylitis; PsA, psoriatic arthritis; RA, rheumatoid arthritis; CI, confidence interval; NE, non-estimatable.

- A filled prescription for the index TNF- α inhibitor prior to May 6 2010
 - A registered treatment for a TNF- α inhibitor in an outpatient or inpatient setting
 - Fewer than twelve months baseline and follow-up periods due to emigration, death, or end of data availability
 - A third or a fourth line of SC-TNFis
 - A filled prescription of a SC-TNFi from:
 - a department other than (a) rheumatology, (b) orthopedics, and (c) rehabilitation and
 - a prescriber was not-specialized in rheumatology
 - Third or subsequent SC-TNFi.
- The implementation of the inclusion/exclusion criteria on the population are provided in Figure S2.

Patient Preference and Adherence

Publish your work in this journal

Patient Preference and Adherence is an international, peer-reviewed, open access journal that focuses on the growing importance of patient preference and adherence throughout the therapeutic continuum. Patient satisfaction, acceptability, quality of life, compliance, persistence and their role in developing new therapeutic modalities and compounds to optimize

clinical outcomes for existing disease states are major areas of interest for the journal. This journal has been accepted for indexing on PubMed Central. The manuscript management system is completely online and includes a very quick and fair peer-review system, which is all easy to use. Visit <http://www.dovepress.com/testimonials.php> to read real quotes from published authors.

Submit your manuscript here: <http://www.dovepress.com/patient-preference-and-adherence-journal>

Dovepress