

# A model of blood-ammonia homeostasis based on a quantitative analysis of nitrogen metabolism in the multiple organs involved in the production, catabolism, and excretion of ammonia in humans

David G Levitt<sup>1</sup>  
Michael D Levitt<sup>2</sup>

<sup>1</sup>Department of Integrative Biology and Physiology, University of Minnesota, <sup>2</sup>Research Service, Veterans Affairs Medical Center, Minneapolis, MN, USA

**Abstract:** Increased blood ammonia ( $\text{NH}_3$ ) is an important causative factor in hepatic encephalopathy, and clinical treatment of hepatic encephalopathy is focused on lowering  $\text{NH}_3$ . Ammonia is a central element in intraorgan nitrogen (N) transport, and modeling the factors that determine blood- $\text{NH}_3$  concentration is complicated by the need to account for a variety of reactions carried out in multiple organs. This review presents a detailed quantitative analysis of the major factors determining blood- $\text{NH}_3$  homeostasis – the N metabolism of urea,  $\text{NH}_3$ , and amino acids by the liver, gastrointestinal system, muscle, kidney, and brain – with the ultimate goal of creating a model that allows for prediction of blood- $\text{NH}_3$  concentration. Although enormous amounts of  $\text{NH}_3$  are produced during normal liver amino-acid metabolism, this  $\text{NH}_3$  is completely captured by the urea cycle and does not contribute to blood  $\text{NH}_3$ . While some systemic  $\text{NH}_3$  derives from renal and muscle metabolism, the primary site of blood- $\text{NH}_3$  production is the gastrointestinal tract, as evidenced by portal vein- $\text{NH}_3$  concentrations that are about three times that of systemic blood. Three mechanisms, in order of quantitative importance, release  $\text{NH}_3$  in the gut: 1) hydrolysis of urea by bacterial urease, 2) bacterial protein deamination, and 3) intestinal mucosal glutamine metabolism. Although the colon is conventionally assumed to be the major site of gut- $\text{NH}_3$  production, evidence is reviewed that indicates that the stomach (via *Helicobacter pylori* metabolism) and small intestine may be of greater importance. In healthy subjects, most of this gut  $\text{NH}_3$  is removed by the liver before reaching the systemic circulation. Using a quantitative model, loss of this “first-pass metabolism” due to portal collateral circulation can account for the hyperammonemia observed in chronic liver disease, and there is usually no need to implicate hepatocyte malfunction. In contrast, in acute hepatic necrosis, hyperammonemia results from damaged hepatocytes. Although muscle- $\text{NH}_3$  uptake is normally negligible, it can become important in severe hyperammonemia. The  $\text{NH}_3$ -lowering actions of intestinal antibiotics (rifaximin) and lactulose are discussed in detail, with particular emphasis on the seeming lack of importance of the frequently emphasized acidifying action of lactulose in the colon.

**Keywords:** ammonia, encephalopathy, urease, shunt, urea, glutamate, glutamine, lactulose, cirrhosis

## Introduction

Pavlov et al described a link between  $\text{NH}_3$  and hepatic encephalopathy (HE) in 1893, but detailed investigation into the biochemistry of  $\text{NH}_3$  and its alterations in liver disease did not begin until the 1950s.<sup>1,2</sup> Despite enormous research efforts, the multifaceted pathophysiology of HE, including the role played by  $\text{NH}_3$ , remains poorly understood.<sup>3,4</sup>

Correspondence: David G Levitt  
Department of Integrative Biology and Physiology, University of Minnesota,  
6-125 Jackson Hall, 321 Church Street  
Southeast, Minneapolis, MN 55455, USA  
Tel +1 612 625 7649  
Fax +1 612 625 5149  
Email levit001@umn.edu

In our experience, clinicians commonly believe that HE results in large part from the defective hepatic removal of  $\text{NH}_3$  produced from bacterial deamination of protein in the colon.<sup>5</sup> As a result, therapeutic interventions have been directed toward attempts to limit this putative source of  $\text{NH}_3$  via colectomy (1960s)<sup>5,6</sup> and more recently via medical interventions, such as administration of inabsorbable disaccharides and antibiotics.<sup>7</sup> While this medical therapy clearly has efficacy, it is equally clear that multiple processes in addition to protein deamination in the colon play major roles in the production of  $\text{NH}_3$ . This review peripherally discusses the connection between  $\text{NH}_3$  and HE, but rather focuses on analyzing available data concerning the quantitative influence of the multiple reactions in various organs that determine blood- $\text{NH}_3$  level. Our ultimate objective was the creation of a quantitative model describing the interaction of the multiple factors involved in  $\text{NH}_3$  homeostasis, a model that makes possible estimation of the influence of individual pathophysiological processes, such as portosystemic shunting, on blood- $\text{NH}_3$  concentration.

Ammonia is ionizable with equilibrium between the gaseous ( $\text{NH}_3$ ) and ionized ( $\text{NH}_4^+$ ) forms:



The ratio of  $\text{NH}_3:\text{NH}_4^+$  is described by the Henderson–Hasselbalch relation:

$$\log_{10}(\text{NH}_3 / \text{NH}_4^+) = \text{pH} - \text{p}K_a \quad (2)$$

where  $\text{p}K_a = -\log_{10}(K_a)$ . Substituting the  $\text{p}K_a$  of 8.95 (at 35°C)<sup>8,9</sup> and pH 7.4 into Equation 2,  $\text{NH}_3/\text{NH}_4^+ = 0.028$ , or 2.8% of  $\text{NH}_3$  is in the form of  $\text{NH}_3$ . It had been generally assumed that the high cell-membrane permeability of the gaseous form ( $\text{NH}_3$ ) allowed  $\text{NH}_3$  to equilibrate rapidly between blood and tissue via nonionic diffusion. However, it has recently been recognized that there are cell-membrane transporters for both  $\text{NH}_4^+$  and  $\text{NH}_3$ ,<sup>10,11</sup> and hence the assumption of nonionic equilibrium may not be valid. Nonionic equilibrium clearly does not occur in the kidney, where acid–base balance is maintained via the concentration of  $\text{NH}_4^+$  in the urine (discussed in detail in the “Renal N balance” section).<sup>12</sup> This review focuses primarily on factors determining blood  $\text{NH}_3$ , and is not concerned with the details of blood–tissue exchange.

The factors determining blood  $\text{NH}_3$  (the term “ $\text{NH}_3$ ” is used herein to refer to both the gaseous and ionized forms) are extremely complicated, because  $\text{NH}_3$  is a central element

in multiple transfer processes involving nitrogen (N) within the body, with blood- $\text{NH}_3$  concentration being the resultant of all these N metabolic processes. While a number of recent reviews have focused on various aspects of this complex process,<sup>3,13–15</sup> we attempt to provide a complete examination of all the factors determining blood  $\text{NH}_3$ , with an emphasis on their relation to human clinical pathophysiology.

Table 1 summarizes the quantitative contribution of the main N-metabolizing organs (gastrointestinal [GI] tract, liver, kidney, brain, and muscle) to the four primary N metabolites (urea,  $\text{NH}_3$ , glutamine, and alanine). Figure 1 summarizes the influence of the various reactions occurring in the different organs and the resultant arterial and venous concentrations of N compounds, based on the organ blood flows listed in the second column of Table 1. The rapid turnover of N compounds results in a pseudo-steady state, with the net rate of organ uptake equal to organ production. For example, plasma glutamine has a turnover half-life of 25 minutes.<sup>16</sup> The values listed for “muscle” in Table 1 are theoretical (not experimental) rates that have been adjusted to produce this steady state. Although it is obviously difficult to measure some of these values, eg, the total body-muscle glutamine production, it will be shown that the theoretical values in Table 1 are in rough agreement with experimental measurements.

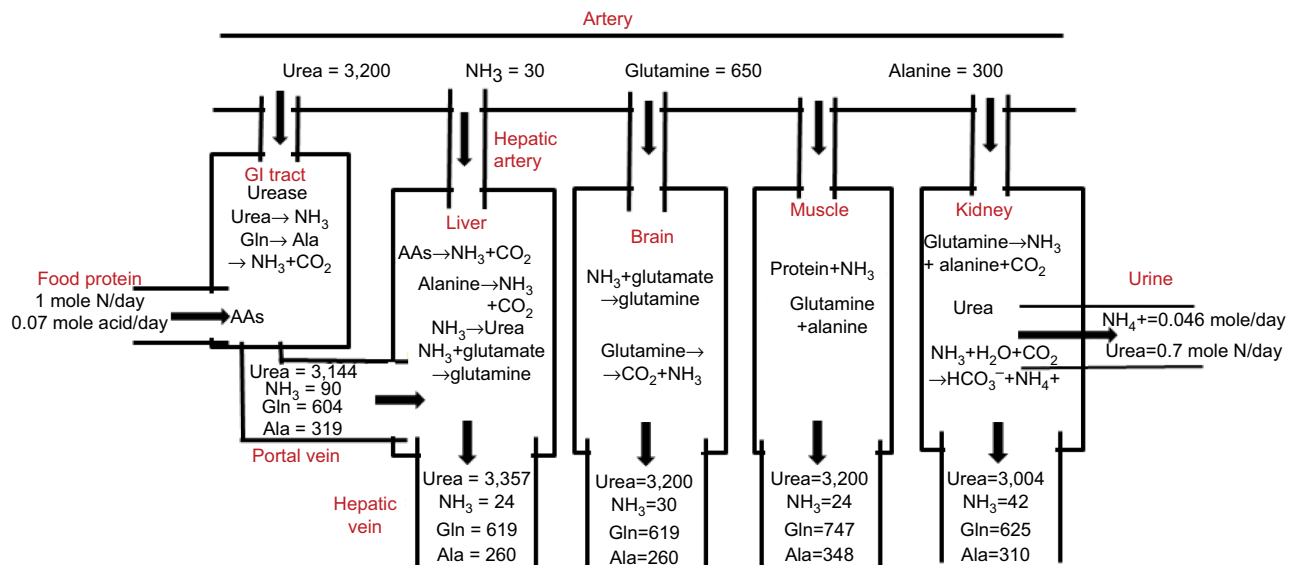
The results in Table 1 and Figure 1 should be regarded as highly simplified, first-order attempts to quantify the role played by various organs in the metabolism of N compounds, nitrogen balance, and the contribution of these organs to plasma- $\text{NH}_3$  concentration. Measurements of human-organ N fluxes are difficult to perform, limited in number, and have large experimental variability, especially for the GI tract, which requires simultaneous sampling of portal and hepatic vein blood. We have limited the analysis to the four major N metabolites: urea,  $\text{NH}_3$ , glutamine, and alanine. The attention paid to glutamine and alanine to the exclusion of the other amino acids (AAs) is in part related to the fact that the arterial blood concentrations (in units of micromole/liter) of glutamine (650  $\mu\text{M}$ ) and alanine (300  $\mu\text{M}$ ) are appreciably higher than those of other AAs, most of which have concentrations <100  $\mu\text{M}$ .<sup>17</sup> More importantly, as discussed herein, glutamine and alanine are unique among the AAs in having important functions in interorgan N transport. Finally, we have only considered N balance in five organs (GI tract, liver, kidney, brain and muscle) and neglected the contributions of other major organs, such as adipose or lungs. Although the lungs may be involved in N exchange in rats,<sup>18</sup> they do not seem to be important in humans.<sup>19</sup> Although the brain is included because of its obvious clinical importance in HE,

**Table I** Postprandial human blood-flow rates

Organ	Blood flow (L/min/70 kg)	Organ balance (M) ( $\mu\text{m}/\text{min}/70\text{ kg}$ ; +, net output; –, net uptake)			
		Urea	Glutamine	Alanine	Ammonia
GI tract	1.1 ( $F_{\text{PV}}$ )	–61	–50	+21	+66
Liver	0.45 ( $F_{\text{HA}}$ )	+305	+2.3	–82	–75
Kidney	1.24	–244	–30	+13	15
Brain	0.78	0	–20	0	0
Muscle	1	0	+97.67	+48	–6

**Notes:** In GI tract (portal vein), liver (hepatic artery), kidney, brain, and muscle and net organ balance M (+, production; –, uptake)<sup>27,48,98,164</sup> of urea, glutamine, alanine, and  $\text{NH}_3$ .<sup>20–23</sup> Urea organ balances are based on total nitrogen balance, assuming that 20% of the urea formed in the liver is metabolized by GI tract bacterial urease and the other 80% excreted in the kidney. The  $\text{NH}_3$  balance for the kidney is from van de Poll et al.<sup>27</sup> GI tract and liver from portal vein and hepatic vein measurements in patients with idiopathic portal hypertension from Nomura et al.<sup>110</sup> or during cholecystectomy from McDermott et al.<sup>111</sup> Renal  $\text{NH}_3$  balance refers to the net  $\text{NH}_3$  added to the systemic circulation. An additional 32  $\mu\text{m}/\text{min}/70\text{ kg}$  of  $\text{NH}_3$  is produced in the kidney and excreted in the urine. Muscle balances are theoretical (not experimental) rates that have been adjusted to produce a steady state (total solute production = total solute uptake). Organ flow rates are from Levitt.<sup>43</sup>

**Abbreviation:** GI, gastrointestinal.

**Figure 1** Total human N balance.

**Notes:** Concentrations ( $\mu\text{M}$ ) of urea, glutamine,  $\text{NH}_3$ , and alanine entering each organ in the artery and portal vein and leaving in the veins of each organ resulting from N-balance values and organ flows in Table I. Processes acting on these N compounds in each organ are briefly outlined.

**Abbreviations:** GI, gastrointestinal; AAs, amino acids; Gln, glutamine; Ala, alanine.

its contribution to the systemic N balance is small with negligible  $\text{NH}_3$  production<sup>20,21</sup> and small glutamine uptake.<sup>22,23</sup> This analysis focuses on the net organ balance of  $\text{NH}_3$  and other N solutes. Studies following tracer N-labeled  $\text{NH}_3$  are not useful, because the N in  $\text{NH}_3$  exchanges rapidly (in seconds) with many AAs.<sup>22,24</sup>

Branched-chain AAs (BCAAs; leucine, isoleucine, and valine) have unique metabolic properties that have made them the subject of intense study.<sup>25</sup> Their total normal plasma concentration is about 215  $\mu\text{M}$ ,<sup>26</sup> less than that of alanine, and they make only minor direct contributions to organ- $\text{NH}_3$  balance.<sup>27</sup> However, they have important indirect contributions through their influence on the muscle metabolism of glutamine and alanine. In chronic liver disease (CLD), plasma-BCAA concentrations are significantly reduced. Holeček<sup>28–32</sup>

reviewed their influence on muscle-protein metabolism and plasma  $\text{NH}_3$  and the therapeutic implications of nutritional BCAA supplementation. This is discussed in more detail in the following sections.

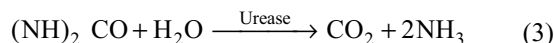
Brief overviews of the factors determining the steady state balance for urea, glutamine and alanine, and  $\text{NH}_3$  are presented next, followed by in-depth discussions of N metabolism in the GI tract, kidney, muscle, and liver. Then, we focus on the pathophysiology of the hyperammonemia associated with chronic and acute liver disease. Following a brief review of the hyperammonemia accompanying genetic urea-cycle disorders, we discuss the mechanistic basis of therapeutic GI interventions that have been used in the treatment of hyperammonemia in CLD. Finally, we discuss the clinical implications of blood- $\text{NH}_3$  measurements.

## Urea balance

The data for urea in Table 1 and Figure 1 are based on simple metabolic balance estimates. Renal urea excretion is the primary N-excretory mechanism in mammals. The standard human diet contains about 85 g protein/day,<sup>33</sup> corresponding to about 13.6 g N<sup>34</sup> or about 1 M N/70 kg/day. In a steady state, this intake must be balanced by the excretion of 1M/day of N, which occurs via urine (~82%), feces (~15%), and skin (~3%).<sup>35</sup> Urine N is primarily urea (~87%), NH<sub>3</sub> (~6%), and creatinine (~7%).<sup>36</sup> Therefore, about 0.7 M urea N or 350 mm of urea is excreted per day (Figure 1).

The normal renal urea clearance of 75 mL/min implies an arterial urea ( $U_{\text{Art}}$ ) concentration of 3,200  $\mu\text{M}$  (Figure 1). Urea is produced only in the liver by the urea-cycle system. As illustrated in Figure 2, the liver removes AAs via transamination to L-glutamate, which is transported into liver mitochondria and deaminated by glutamate dehydrogenase. This process releases NH<sub>3</sub>, which is immediately converted to urea and cycled to the cytosol. The AAs metabolized by the liver represent both those newly absorbed from the intestinal tract and AAs released systemically during normal protein turnover. It should be emphasized that the NH<sub>3</sub> produced by liver mitochondrial AA metabolism is completely captured and converted to urea by the urea cycle, and thus does not directly contribute to systemic NH<sub>3</sub> (the focus of this review). The best evidence in support of this concept is that an intravenous (IV) AA infusion at a rate roughly three times the normal protein intake increased the urea-excretion rate fourfold, raised blood-urea N concentration by 10,000  $\mu\text{M}$ , but had no appreciable effect on blood-NH<sub>3</sub> concentration (normal, about 30  $\mu\text{M}$ ).<sup>37</sup>

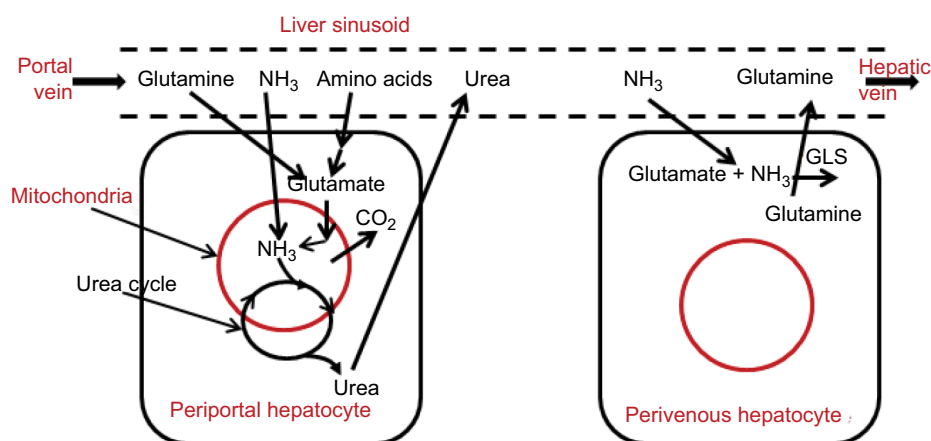
Studies in humans of the kinetics of <sup>15</sup>N- or <sup>14</sup>C-labeled urea have found that only about 75% of IV labeled urea was recoverable in the urine (no urea is present in feces).<sup>38–40</sup> Since mammalian cells lack urease and cannot metabolize urea, this metabolism must be the result of bacterial urease activity that presumably takes place in the GI tract:



Direct support for this concept comes from the observation that hydrolysis of urea is negligible in germ-free rats<sup>41</sup> and dogs.<sup>42</sup> In Table 1, it is assumed that GI urea metabolism is 25% of renal urea excretion (or 20% of the total renal plus GI), corresponding to normal GI urea clearance of 18.75 mL/min or  $M_{\text{GI}} = -61 \mu\text{M}/70 \text{ kg/min}$  (Table 1, where the negative sign indicates net urea extraction), which produces 122  $\mu\text{M}/70 \text{ kg/min}$  of NH<sub>3</sub>. A fraction of this NH<sub>3</sub> is incorporated into bacterial protein and trapped in the GI tract (not well quantified in humans), while the remainder is absorbed into the portal circulation (Figure 1). The portal vein urea concentration ( $U_{\text{PV}}$ ) in Figure 1 is determined from the net GI urea balance:

$$[U_{\text{Art}} - U_{\text{PV}}] Q_{\text{PV}} = 61 \mu\text{M}/70 \text{ kg/min} \quad (4)$$

where  $Q_{\text{PV}}$  is the portal vein flow rate. Assuming a normal  $Q_{\text{PV}}$  of 1.1 L/min/70 kg<sup>43</sup> and solving Equation 4,  $U_{\text{PV}} = U_{\text{Art}} - 55 \mu\text{M} = 3,144 \mu\text{M}$ . The total body urea production is the sum of the urine secretion (350 mm/day) plus GI metabolism (87.5 mm/day) = 437 mm/day = 305  $\mu\text{M}/70 \text{ kg/min}$ . Since only the liver can synthesize urea, the corresponding hepatic vein urea concentration ( $U_{\text{HV}}$ ) is determined from the balance equation:



**Figure 2** Processes involved in N balance in the liver.

**Notes:** In periportal hepatocytes, amino acids (including glutamine) are metabolized to NH<sub>3</sub> and CO<sub>2</sub> in the mitochondria, and all this NH<sub>3</sub> is captured and converted to urea by the urea cycle. About half of the NH<sub>3</sub> removed by the liver diffuses to the urea cycle and is converted to urea. In perivenous hepatocytes, the other half of the NH<sub>3</sub> that is removed is stoichiometrically converted to glutamine by glutamine synthetase (GLS), with the glutamine leaving in the hepatic vein.

$$U_{\text{Art}} Q_{\text{HA}} + U_{\text{PV}} Q_{\text{PV}} - U_{\text{HV}} (Q_{\text{HA}} + Q_{\text{PV}}) = -305 \mu\text{M}/70 \text{ kg}/\text{min} \quad (5)$$

where  $Q_{\text{HA}}$  is the hepatic artery flow rate ( $\sim 0.45 \text{ L}/\text{min}/70 \text{ kg}$ ).<sup>43</sup> Using the previously determined values for  $U_{\text{Art}}$  ( $3,200 \mu\text{M}$ ) and  $U_{\text{PV}}$  ( $3,144 \mu\text{M}$ ), solving Equation 5 indicates  $U_{\text{HV}} = 3,357 \mu\text{M}$ . The only other organ that alters urea concentration is the kidney, which excretes  $244 \mu\text{M}/70 \text{ kg}/\text{min}$  of urea:

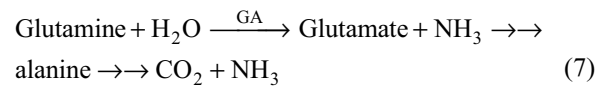
$$[U_{\text{Art}} - U_{\text{RV}}] Q_{\text{Ren}} = 243 \mu\text{M}/70 \text{ kg}/\text{min} \quad (6)$$

where  $U_{\text{RV}}$  is the renal vein urea concentration and  $Q_{\text{Ren}}$  the renal blood flow. Assuming a  $Q_{\text{Ren}}$  of  $1.24 \text{ L}/\text{min}$ <sup>43</sup> and  $U_{\text{RV}} = 3,004 \mu\text{M}$ . These arterial and venous urea concentrations are illustrated in Figure 1, and organ-urea uptake or output and blood flow are summarized in Table 1.

## Glutamine, alanine, and branched-chain amino-acid balance

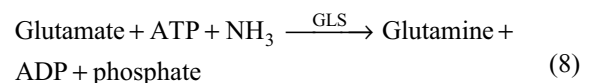
Glutamine has a major role in N transport, and knowledge of its rate of synthesis and metabolism in different body organs is crucial to understanding  $\text{NH}_3$  physiology. Skeletal muscle provides a large carbon, N, and energy reservoir, and glutamine is its primary transfer agent, acting, for example, as a major source for gluconeogenesis.<sup>44,45</sup> Skeletal muscle has an extremely high free-glutamine cytosolic concentration of about  $20,000 \mu\text{M}$ <sup>46</sup> that allows maintenance of relatively constant plasma glutamine of about  $650 \mu\text{M}$  in response to rapid changes in utilization. In the postprandial state, skeletal muscle is the major endogenous source of glutamine.<sup>47</sup> As discussed herein, muscle glutamine and alanine synthesis is linked to BCAA metabolism. Estimates for the normal postprandial glutamine balance of the GI tract, liver kidney, brain, and muscle are listed in Table 1, and corresponding venous plasma concentrations are shown in Figure 1. As discussed, it is assumed in Table 1 that muscle production rates must balance other organ uptake. This theoretical muscle glutamine-production rate of rate of  $113.67 \mu\text{M}/\text{min}/70 \text{ kg}$  (Table 1) is of the same order as the experimental measurement of  $95 \mu\text{M}/\text{min}/70 \text{ kg}$  of Damink et al<sup>48</sup> for the lower legs in patients with stable cirrhosis.

As shown in Table 1, there are high rates of glutamine utilization in the kidney and GI tract, organs for which glutamine is used as a source for energy production. The first step in glutamine metabolism is enzymatic conversion by glutaminase (GA) to  $\text{NH}_3$  and glutamate, which is then further metabolized to alanine,  $\text{NH}_3$ ,  $\text{CO}_2$ , and minor amounts of citrulline and proline:



Most of the alanine produced by this process in the kidneys and GI tract (Table 1) is then metabolized by the liver during gluconeogenesis. In the kidneys, the  $\text{NH}_3$  produced has an important role in the regulation of acid–base balance and is discussed in more detail in the “Renal N balance” section. Glutaminase is located primarily in kidney, GI tract, liver, and brain tissue, and is notably absent from skeletal muscle.<sup>49</sup> Therefore, though muscle cannot produce  $\text{NH}_3$  by GA,  $\text{NH}_3$  is produced in muscle via another pathway, the purine nucleotide system (discussed in detail in the “Muscle N balance” section).<sup>50</sup>

In the liver, there are two competing processes affecting glutamine (see Figure 2). In periportal hepatocytes, glutamine is metabolized by GA and the AA mitochondrial system to  $\text{CO}_2$ , with the  $\text{NH}_3$  converted to urea. In perivenous hepatocytes, glutamine is synthesized from glutamate and catalyzed by glutamine synthetase (GLS):



In mammals, all glutamine synthesis involves the amination of glutamate via the action of GLS. As such, Equation 8 depicts the necessary last step in glutamine synthesis, an important mechanism for clearing  $\text{NH}_3$  produced in the GI tract. These two hepatic processes involving glutamine are regulated in response to the body’s metabolic and acid–base needs. Because GLS is at the venous end of the sinusoid, the newly synthesized glutamine cannot be metabolized by the periportal GA.<sup>51</sup> Based on the arterial, portal, and hepatic vein glutamine measurements of van de Poll et al<sup>27</sup> and the estimated flow rates, these two effects roughly cancel each other out, so there is negligible hepatic glutamine uptake.

Alanine has a similar but smaller function than glutamine, serving as a muscle carbon and N reservoir that is tapped during the postprandial and fasting state. Some of the glutamine released from muscle is converted to alanine by the kidney and GI tract. Most of this alanine is consumed by the liver for gluconeogenesis, in marked contrast to glutamine, for which the liver has negligible uptake (Table 1).

Most AAs are metabolized in the liver via cytosolic aminotransferase to glutamate, which is then converted to urea. The BCAAs are unique among the AAs in that, since cytosolic branched-chain aminotransferase (BCAAT) is

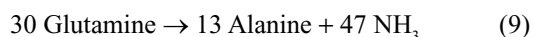


absent in the liver, the liver cannot metabolize BCAAs to urea, and BCAAs do not have hepatic first-pass metabolism.<sup>25</sup> The primary site of BCAAT is muscle, with about half the muscle AA uptake consisting of BCAAs.<sup>25,31,32</sup> As discussed in the “Muscle N balance” section, this conversion of BCAAs to glutamate provides the major source of muscle glutamine and alanine production.

## Ammonia balance

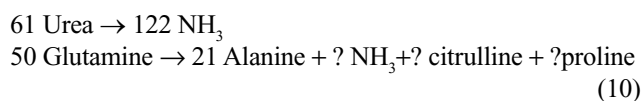
Systemic  $\text{NH}_3$  is a byproduct of the urea, glutamine, and alanine metabolism discussed. Normal arterial plasma  $\text{NH}_3$  ranges 12–40  $\mu\text{M}$ , with significant variation obtained by various laboratories using different methodologies.<sup>52</sup> We have assumed a normal value of 30  $\mu\text{M}$  in Table 1. Plasma  $\text{NH}_3$  is relatively constant, eg, it does not change significantly following a meal.<sup>53</sup> Since human lung  $\text{NH}_3$  metabolism is insignificant, arterial concentration should be equal to central venous concentration.

As shown in Table 1, the main sites of systemic  $\text{NH}_3$  production are the kidneys and GI tract. In kidneys, 30  $\mu\text{M}/\text{min}/70 \text{ kg}$  of glutamine is removed and 13  $\mu\text{M}/\text{min}/70 \text{ kg}$  of alanine and 15  $\mu\text{M}/\text{min}/70 \text{ kg}$  of  $\text{NH}_3$  added to the systemic circulation. One can calculate a net N balance for this glutamine (2 N/molecule), assuming that the only N products of glutamine metabolism are alanine and  $\text{NH}_3$ :



Of the 47  $\mu\text{M}/\text{min}/70 \text{ kg}$   $\text{NH}_3$  produced, 15  $\mu\text{M}/\text{min}/70 \text{ kg}$  (Table 1) enters the systemic circulation and the other 32  $\mu\text{M}/\text{min}/70 \text{ kg}$  is secreted in the urine as  $\text{NH}_4^+$  (Figure 1). Equation 9 is an overestimate of the  $\text{NH}_3$  produced, because there are also significant amounts of proline and citrulline produced, in addition to alanine.

The GI tract is the major site of  $\text{NH}_3$  production, adding 66  $\mu\text{M}/\text{min}/70 \text{ kg}$  (Table 1) to the portal vein, resulting in an  $\text{NH}_3$  concentration in the portal vein of about three times the arterial concentration (Figure 1). GI  $\text{NH}_3$  is formed by three distinct processes: bacterial urease hydrolysis of circulating urea (Equation 3), metabolism of glutamine (Equation 7) extracted from circulating blood, and bacterial deamination of luminal protein. The first two processes can be quantified from urea and glutamine arterial–venous concentration differences across the GI tract (Table 1; Figure 1). As listed in Table 1, 61  $\mu\text{M}/\text{min}/70 \text{ kg}$  urea and 50  $\mu\text{M}/\text{min}/70 \text{ kg}$  glutamine are metabolized and 66  $\mu\text{M}/\text{min}/70 \text{ kg}$   $\text{NH}_3$  and 21  $\mu\text{M}/\text{min}/70 \text{ kg}$  alanine added to the portal circulation. An N balance on these three solutes (units in  $\mu\text{M}/\text{min}/70 \text{ kg}$ ) indicates:



As indicated in Equation 10, the  $\text{NH}_3$  produced from glutamine metabolism is uncertain, because significant (but unknown in humans) amounts of proline and citrulline (with their attendant N) are produced in addition to alanine.<sup>54</sup> The third process ( $\text{NH}_3$  release from bacterial protein deamination) is difficult to quantify, because it represents net  $\text{NH}_3$  release and  $\text{NH}_3$  uptake by bacteria and cannot be determined simply from arterial–venous differences. As discussed in the “GI-tract N balance” section, this process could potentially produce another 29  $\mu\text{M}/\text{min}/70 \text{ kg}$   $\text{NH}_3$ . Since only 66  $\mu\text{M}/\text{min}/70 \text{ kg}$   $\text{NH}_3$  enters the systemic circulation via the portal vein, less than the 122  $\mu\text{M}/\text{min}/70 \text{ kg}$   $\text{NH}_3$  produced just from urea, much of this  $\text{NH}_3$  is presumably converted to bacterial protein.

Since postprandial skeletal muscle conversion of protein to glutamine requires additional N (Figure 1), muscle is a potential site of  $\text{NH}_3$  uptake. In the normal postprandial state, this  $\text{NH}_3$  uptake is small ( $\sim 6 \mu\text{M}/\text{min}/70 \text{ kg}$ ) compared to liver uptake ( $\sim 75 \mu\text{M}/\text{min}/70 \text{ kg}$ ) (Table 1). However, as discussed herein, in liver failure this muscle contribution increases and becomes of major importance.

The liver is the major organ responsible for  $\text{NH}_3$  removal. As shown in Figure 2, there are two distinct liver pathways for  $\text{NH}_3$  metabolism. Periportal hepatocytes represent the major mass of the liver, responsible for most of the metabolism, including the breakdown of AAs and the very efficient mitochondrial conversion of  $\text{NH}_3$  to urea by the urea-cycle system. A fraction of the  $\text{NH}_3$  entering the liver via the portal vein diffuses to this site and is converted to urea. The second  $\text{NH}_3$ -metabolic pathway is the conversion of  $\text{NH}_3$  to glutamine by cytosolic GLS (Equation 8) that is localized in a small ring of cells encircling the terminal hepatic venules: perivenous hepatocytes.<sup>51,55</sup> Although there are no quantitative human measurements, in mouse<sup>56</sup> and pig<sup>57</sup> liver, about half of the removed  $\text{NH}_3$  is converted to urea and the other half to glutamine.

## GI-tract N balance

As discussed, it is clear from arterial–venous concentration measurements that the GI tract is the major source of the  $\text{NH}_3$  that determines plasma concentration. Based on a variety of earlier studies,<sup>58,59</sup> the current (2016) textbook description is that  $\text{NH}_3$  “. . . is produced primarily in the colon, where bacteria metabolize proteins and other nitrogen-based products into ammonia”.<sup>60</sup> Therefore, it is generally assumed that the main source of GI- $\text{NH}_3$  production results from two distinct

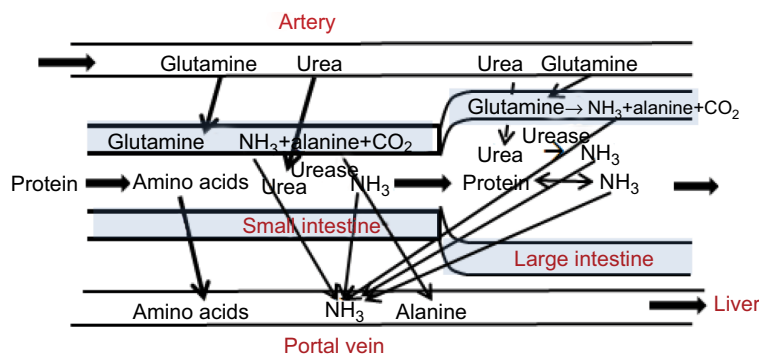
colonic bacterial processes: urea hydrolysis (Equation 7) and protein deamination of malabsorbed protein. More recently, a third mechanism, glutamine metabolism (Equation 7), which occurs throughout the GI tract, has been proposed as another major contributor to GI- $\text{NH}_3$  production.<sup>14</sup> These three processes are illustrated schematically in Figure 3 and discussed in detail herein. One emphasis of this discussion will be demonstrating that there are serious questions about the conventional view that bacterial urea hydrolysis occurs in the colon. The location of bacterial urea metabolism has important clinical significance, because one of the primary forms of HE treatment is directed at decreasing this GI- $\text{NH}_3$  production and it is important to understand the location and types of bacteria involved.

While bacteria are commonly recognized to produce  $\text{NH}_3$  in the gut, it should be noted that bacteria in the process of replicating must synthesize protein. A sizable fraction of the requisite nitrogen may be supplied by  $\text{NH}_3$ , and hence bacteria may serve as a mechanism of eliminating intestinal  $\text{NH}_3$ . Such bacterial uptake of  $\text{NH}_3$  is supported by the observation that enteric bacteria rapidly proliferate in a medium in which  $\text{NH}_3$  is the sole source of nitrogen.<sup>61</sup> The relatively low bacterial counts of the small bowel would seemingly relegate the importance of enteric bacterial accumulation of nitrogen to the colon. However, Miner-Williams et al<sup>62</sup> found that bacterial protein accounted for >50% of the roughly 0.6 g nitrogen passing the terminal ileum of healthy controls over an 8-hour period following a casein meal.

The commonly accepted idea that AA deamination by colonic bacterial metabolism is a primary net producer of gut  $\text{NH}_3$  has little direct experimental support. The massive proliferation of bacteria in the colon to counts of  $>10^{11}$ /g feces could obviously be a major  $\text{NH}_3$  sink if most of the

bacterial N was derived from  $\text{NH}_3$ . The best (but indirect) argument for this concept that colonic bacteria are a net producer of  $\text{NH}_3$  is that the fecal  $\text{NH}_3$  estimated using swallowed dialysis bags is relatively high – about 14 mM (1%–2% of total fecal N) – and protein deamination is a likely source of this  $\text{NH}_3$ .<sup>40</sup> A rough estimate of the balance between colonic bacterial production minus bacterial removal is provided by the difference between total N entering and leaving the large intestine, assuming that all this difference reflects net bacterial  $\text{NH}_3$  production. Gibson et al<sup>63</sup> compared the total N in ileostomy drainage (1.8 g/day) versus that in normal subject feces (1.2 g/day). Assuming that this difference (0.6 g/day) was all converted to  $\text{NH}_3$ , it would be equivalent to 29  $\mu\text{mol}/\text{min}/70 \text{ kg}$   $\text{NH}_3$ , about 16% of the total GI- $\text{NH}_3$  production from all sources: protein deamination (~29  $\mu\text{mol}/\text{min}$ ), urea hydrolysis (~122  $\mu\text{mol}/\text{min}/70 \text{ kg}$ ), and glutamine metabolism (~20  $\mu\text{mol}/\text{min}/70 \text{ kg}$ ).

Intestinal glutamine metabolism (Equation 7) is now generally accepted to be a major source of GI  $\text{NH}_3$ .<sup>14</sup> The glutamine extraction across the entire GI tract (arterial–portal vein  $\text{NH}_3$ ) varies from about 33% in rats<sup>54</sup> and dogs<sup>54</sup> to 12% in monkeys<sup>54</sup> and 7.6% in humans (Figure 2). Glutamine has a major role in maintaining normal gut function. It is an oxidative fuel source for the intestine. In the perfused rat intestine, glutamine was the source of 32% of the  $\text{CO}_2$  produced, even though the perfusate had a high glucose concentration.<sup>54</sup> This is species-dependent. In dogs in the 24-hour fasted state, glutamine provided only about 15% as much fuel as glucose.<sup>64</sup> The alanine produced by glutamine metabolism (Equation 7) is used by the liver for gluconeogenesis during the postprandial period. These two functions are regulated in response to the body's nutritional needs. In dogs, the fraction of glutamine converted to alanine falls from 67% in the



**Figure 3** Processes involved in N balance in the gastrointestinal tract.

**Notes:** There are three distinct processes producing  $\text{NH}_3$ . Urea diffuses from the blood to the intestinal lumen, where it is hydrolyzed to  $\text{NH}_3$  and  $\text{CO}_2$  by bacterial urease. As indicated by the dashed arrow, mucosal permeability is very low in the large intestine, limiting the rate at which urea can enter the lumen. The second process is the metabolism of glutamine by the intestinal mucosa. This produces varying amounts of  $\text{NH}_3$  and alanine. The third process is bacterial deamination of the malabsorbed protein in the large intestine.

postprandial period (24-hour fast) to 20% after a 96-hour fast.<sup>64</sup> This fraction is important for  $\text{NH}_3$  balance, because for each alanine produced there is one less  $\text{NH}_3$  released than is the case with complete oxidation of glutamine as a fuel source (Equation 10). Glutamine is important for a number of other intestinal functions, including regulation of protein synthesis and as a precursor of nucleic acid biosynthesis.<sup>65</sup>

Although there is unequivocal evidence from urea-tracer studies that in humans, about 20% of the urea produced is metabolized to  $\text{NH}_3$  in the GI tract, there are important questions about the actual location where this occurs. The large intestine has been assumed to be the main site of urea catabolism because the concentration of colonic bacteria exceeds that of the more proximal gut by roughly three orders of magnitude. However, there is strong evidence that the large intestinal mucosa is impermeable to urea, preventing systemic urea from reaching luminal bacteria. The measured rate of transport of blood urea to colonic saline perfusions is very small (clearance of about 0.2% colonic urea blood flow), and even this very small transport may be artifactual, because the absolute appearance rate in the lumen is not altered when plasma-urea concentration was doubled by IV urea infusion.<sup>66</sup> Similarly, there is negligible urea absorption when the human colonic lumen is perfused with high urea concentrations.<sup>67</sup> In marked contrast, urea readily permeates tight small-intestine junctions,<sup>68–70</sup> and the urea concentration in human ileostomy fluid is nearly identical to plasma.<sup>71</sup> Additional support for the small-intestine site of urea metabolism is the observation of Gibson et al<sup>71</sup> that the absolute rate of GI-urea metabolism in patients with ileostomies and nonfunctioning colons is similar to that in normal subjects.

Using ingested cellophane dialysis bags to sample stool-fluid concentrations, Wilson et al<sup>72</sup> found that there was no detectable fecal dialysate urea in normal subjects. Supporters of the argument that the colon is the main site of urea metabolism have argued that this implies that bacteria catabolized 100% of the urea that diffused into the lumen.<sup>73</sup> Several observations argue against this interpretation. First, if colonic bacteria actually catabolized urea as rapidly as it enters the colon, the rate of urea metabolism would be diffusion-limited and directly proportional to plasma-urea concentration. However, the absolute rate of GI urea metabolism remains normal in patients with chronic renal failure, even though their plasma-urea concentration is up to six times normal.<sup>74</sup> Consistent with this is the important observation that blood  $\text{NH}_3$  is not elevated in chronic renal failure patients with urea levels six times normal.<sup>75</sup> Second, if colonic bacteria were consuming most of the urea, one would predict that a large

fraction of the colonic  $\text{NH}_3$  production should be derived from urea metabolism. However, Wrong et al<sup>76</sup> labeled the plasma urea with  $^{15}\text{N}$  and found that the majority of the fecal  $\text{NH}_3$  was not derived from urea, but from some other source, such as plasma glutamine metabolism (Equation 7) or protein deamination.

These arguments indicate that only a minor fraction of urea metabolism occurs in the large intestine, and thus implies that most bacterial urea metabolism must occur in the stomach and small intestine. This would provide an explanation for the unexpected observation that the absolute rate of urea metabolism is independent of plasma-urea concentration. Because of high small-intestine urea permeability,<sup>70</sup> the luminal intestinal urea concentration is approximately equal to plasma urea ( $\sim 3.2$  mM). This indicates that the rate of small-intestine bacterial urea metabolism is maximal at normal serum urea concentrations and further increases in plasma urea (eg, in renal failure) would not be expected to increase the urea metabolic rate.<sup>74</sup> For example, *Helicobacter pylori* urease has a  $K_m$  of 0.48 mM,<sup>77</sup> sixfold lower than normal plasma urea (3.2 mM). If the rates of gastric and small-intestine bacterial urea metabolism were saturated at normal plasma-urea concentrations, it would also explain the “surprising” result that administering urea by mouth did not increase plasma- $\text{NH}_3$  levels in cirrhotic liver patients.<sup>78</sup> Administering the same amount of urea by rectum increased plasma  $\text{NH}_3$  by a factor of about 4.<sup>78</sup> The increased gastric and small-intestine urea produced by oral dosing of urea does not increase  $\text{NH}_3$  production from bacteria that are already consuming urea at a maximum rate, and unmetabolized urea is absorbed in the small intestine before reaching colonic bacteria.

Even if the colonic mucosa were impermeable to urea, a small amount of urea would be delivered to the colon in the ileal effluent. Assuming a 1 L/per day ileal flow containing a urea concentration equal to that of plasma would make possible a colonic urea clearance of 1 L/day. This colonic clearance is negligible compared to the total GI urea clearance, which is 25% of renal urea clearance or about 27 L/day. One would expect this colonic clearance to increase as plasma (and thus ileal) urea increases in patients in renal failure. But even the sixfold increase in plasma urea observed in the studies of Walser<sup>74</sup> would only increase colonic clearance to about 22% of normal gut clearance, and this increase probably would not produce a recognizable increase in serum- $\text{NH}_3$  levels in renal failure patients.

Although these arguments that most bacterial urea metabolism occurs in the stomach and small intestine seem



convincing, surprisingly little attention has been directed at their implications. The only major urea-splitting bacteria that have been clearly identified in the upper gut are *H. pylori*. There is a surprising divergence of opinion in regard to the importance of *H. pylori* metabolism as a source of systemic  $\text{NH}_3$ . The largest study was that of Chen et al<sup>79</sup> of 457 cirrhotic Chinese patients. They found that blood  $\text{NH}_3$  was significantly higher in *H. pylori*-positive (78  $\mu\text{M}$ ) versus *H. pylori*-negative (54  $\mu\text{M}$ ) patients, and that following successful eradication of *H. pylori*, blood  $\text{NH}_3$  declined to 54  $\mu\text{M}$ , the value observed in the initially *H. pylori*-negative subjects. No such decline was observed in subjects in whom eradication efforts had failed. As might be expected, the authors concluded that “*H. pylori* is an important factor for inducing high blood- $\text{NH}_3$  concentration in cirrhotic patients”. Other smaller studies have found no relationship between the existence of *H. pylori* infection and serum- $\text{NH}_3$  concentrations.<sup>80,81</sup> A meta-analysis published in 2013<sup>82</sup> came to the unusual conclusion that *H. pylori* infection increases serum  $\text{NH}_3$ , but only in subjects of Asian ethnicity. While the explanation for this putative ethnic difference may be attributable to unclear technical differences among studies carried out in different countries, *H. pylori* organisms appear to be more aggressive in Asian subjects. It seems possible that *H. pylori* in these subjects produces more  $\text{NH}_3$ . As discussed, only a fraction (50% or less) of the total  $\text{NH}_3$  produced in the GI tract appears in the portal vein, and presumably the remainder is converted into bacterial protein. This is supported by in vitro studies of *H. pylori* urea metabolism, where only about 12% of the  $\text{NH}_3$  produced was recovered as  $\text{NH}_3$  in the medium.<sup>83</sup> If the fraction of the  $\text{NH}_3$  converted into protein declined with increasing  $\text{NH}_3$  production, an influence on serum  $\text{NH}_3$  might only be observed at very high *H. pylori*  $\text{NH}_3$ -production rates.

In contrast to the intensive study of urea catabolism by *H. pylori*, there has been limited research on other urea-splitting organisms that might inhabit the small bowel. In an older study (1966), before it was recognized that only bacteria could metabolize urea, Aoyagi et al<sup>84</sup> determined urease activity in mucosal biopsy samples. Not surprisingly, they found especially high gastric activity (presumably *H. pylori*), but also found jejunum mucosal urease activity that was about threefold that of the colon. Although the relationship between this mucosal activity and total luminal activity is uncertain, these results clearly indicate that there are urea utilizing bacteria in the human small intestine. The finding of higher bacterial urease activity in the small bowel versus colonic biopsies is surprising, given the likelihood of much greater luminal bacteria contamination in colonic

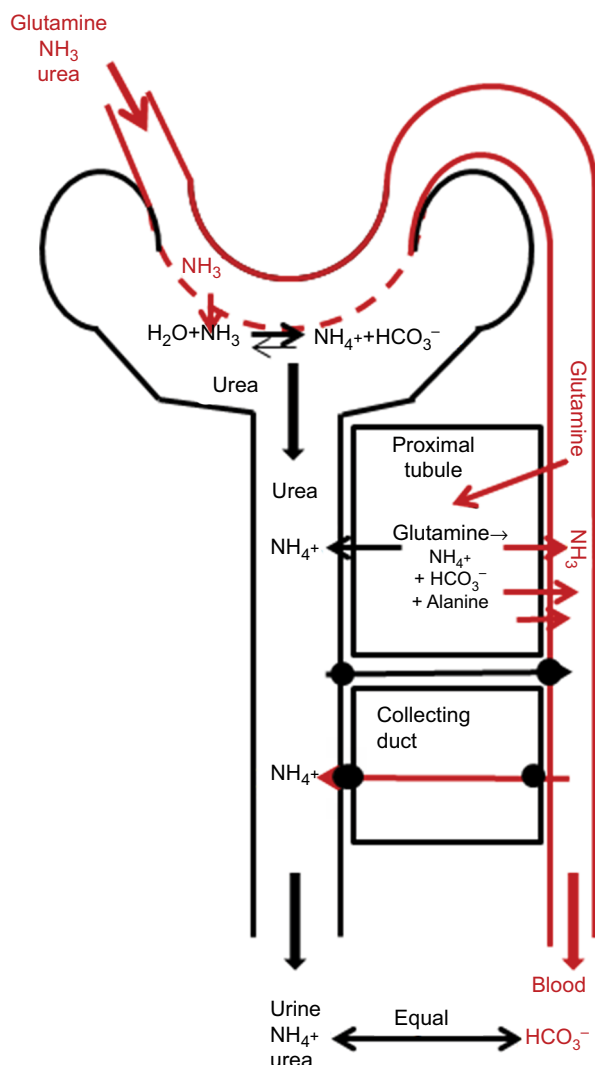
biopsies. Presumably, small-bowel bacteria are either more closely associated with mucosal tissue than is the case with colon tissue or have higher urease activity. Exclusively of *H. pylori*, there has been surprisingly little study of human urease containing intestinal bacteria, with most attention directed to the presence of such organisms in urinary tract infections. Suzuki et al<sup>85</sup> studied the urease activity of 120 strains of human intestinal bacteria, and found evidence of urease activity in a sizable fraction of *Bifidobacterium* and *Proteus* spp. and a small fraction of *Lactobacillus*.

These arguments have focused on the evidence supporting a small-intestine or gastric site of urea metabolism. However, it should be emphasized that there is a body of contradictory evidence favoring the large intestine as the primary site of urea metabolism.<sup>58,59</sup> Probably the strongest evidence favoring the large-intestine site in humans is that unabsorbable disaccharides (eg, lactulose), which are assumed to act primarily via acidification of colonic contents, are nearly as effective as antibiotics in reducing blood  $\text{NH}_3$  in patients with CLD.<sup>86,87</sup> The potential mechanisms by which lactulose reduces blood  $\text{NH}_3$  are discussed in more detail in the “Gastrointestinal therapeutic approaches to lowering blood ammonia” section.

As the preceding discussion demonstrates, there is uncertainty about the important clinical question of the site of  $\text{NH}_3$  production in the GI tract. This question could be definitively answered by determining  $\text{NH}_3$  concentration and flow rate in veins draining the different GI-tract segments. We are aware of only two preliminary reports. From measurements of  $\text{NH}_3$  concentration and flow rates in the portal and superior mesenteric veins of the pig, van Berlo et al<sup>88</sup> estimated that “. . . more than 75% of total intestinal”  $\text{NH}_3$  was produced in the small intestine. van der Hulst et al<sup>89</sup> reported concentrations of 65, 33, and 30  $\mu\text{M}$  in veins draining the jejunum, ileum, and colon, respectively, in patients during GI-cancer surgery. Although they did not measure flow rates, since total small-intestine blood flow is about fivefold that of the large intestine,<sup>90</sup> these  $\text{NH}_3$ -concentration measurements suggest that about 80% of GI-tract  $\text{NH}_3$  is produced in the small intestine. Both of these results are consistent with arguments that the conventional view that GI tract  $\text{NH}_3$  is produced primarily by colonic bacteria is questionable.

## Renal N balance

Ammonium ( $\text{NH}_4^+$ ) urinary excretion (Figure 4) is the most important factor in the control of acid–base balance. Normal human net endogenous acid production (NEAP) depends on dietary protein composition, and we have assumed in

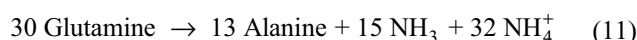


**Figure 4** Schematic diagram of processes involved in N balance in the kidney.  
**Notes:** Urinary excretion of  $\text{NH}_4^+$  is the most important factor in the control of acid–base balance.  $\text{NH}_4^+$  is derived primarily from the metabolism of blood glutamine, which is metabolized in the proximal tubule. A complex set of  $\text{NH}_4^+$ ,  $\text{NH}_3$ , and  $\text{HCO}_3^-$  tubule- and collecting duct-transport processes regulate  $\text{NH}_4^+$  excretion. For each  $\text{NH}_4^+$  molecule excreted, an  $\text{HCO}_3^-$  molecule is added to the systemic circulation. In addition, some of the glutamine is either used as an energy source or converted to alanine.

Figure 1 that NEAP is 70 mEq/70 kg/day.<sup>91,92</sup> In the steady state, this is balanced by the renal net acid excretion, which consists of about a third titratable acids (eg, phosphate) and two-thirds  $\text{NH}_4^+$ ,<sup>92</sup> or 46 mm/70 kg/day  $\text{NH}_4^+$  excreted in urine (Figure 1). This urine  $\text{NH}_4^+$  cannot come solely from plasma- $\text{NH}_3$  clearance, because with arterial plasma  $\text{NH}_3$  of only 30  $\mu\text{M}$ , it would require renal plasma clearance of about 1.5 L/min/70 kg, which is greater than the total  $Q_{\text{Ren}}$ . Most of the  $\text{NH}_4^+$  excreted in the urine is provided by glutamine metabolism (Equation 7), which releases more  $\text{NH}_3$ , than is

excreted in the urine; therefore, the kidney is a net producer of systemic  $\text{NH}_3$  (Table 1; Figure 1).

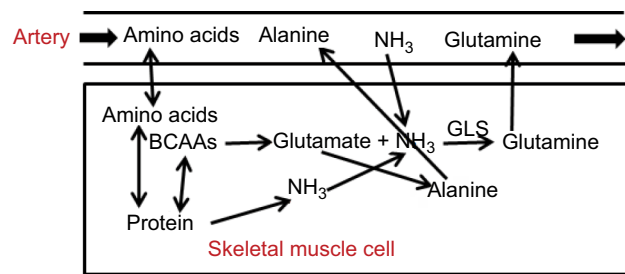
Not surprisingly for something as important as acid–base balance, the processes involved in renal  $\text{NH}_4^+$  excretion are complicated.<sup>92,93</sup>  $\text{NH}_3$  is synthesized from glutamine metabolism (Equation 7), primarily in the proximal tubule, and the amount of  $\text{NH}_4^+$  excreted in the urine is controlled by a complex set of collecting-duct  $\text{NH}_4^+$  and  $\text{HCO}_3^-$  transporters (Figure 4). In addition to providing  $\text{NH}_3$ , the renal metabolism of glutamine provides fuel (eg, ATP) and is used for gluconeogenesis<sup>94</sup> or alanine synthesis.<sup>95</sup> In the normal postprandial state, the overall renal N balance assumed in Table 1 (in units of  $\mu\text{m}/\text{min}/70 \text{ kg}$ ) is:



where the alanine and 15  $\mu\text{m}/\text{min}/70 \text{ kg}$   $\text{NH}_3$  are added to the systemic circulation and the 32  $\mu\text{m}/\text{min}/70 \text{ kg}$   $\text{NH}_4^+$  (0.046 M/day, Figure 1) is excreted in the urine. This balance depends on the metabolic acid–base state. In mild experimental acidosis in which total acid intake is increased by factor of about 3, urine  $\text{NH}_4^+$  excretion increases threefold, renal glutamine uptake doubles, and  $\text{NH}_3$  added to the systemic circulation is relatively unchanged.<sup>96</sup> It should be emphasized that the  $\text{NH}_3$  added to the systemic circulation by the kidney does not undergo the “first-pass” type of metabolism of intestinal  $\text{NH}_3$  (about 70% efficient). Therefore,  $\text{NH}_3$  delivered to the serum via the kidney has a roughly threefold-greater effect on serum  $\text{NH}_3$  than is the case with intestinally produced  $\text{NH}_3$ .

## Muscle N balance

As discussed, the release of AAs by skeletal muscle (Figure 5) is a major source of both energy and N in the postabsorptive state. Muscle N balance has been comprehensively reviewed by Damink et al,<sup>14</sup> and this section summarizes the main features. Although muscle releases all AAs, alanine and glutamine dominate, accounting for >50% of the total.<sup>97</sup> Glutamine is utilized predominantly by the kidney and GI tract, while alanine is used by the liver, primarily for gluconeogenesis (Table 1). The major source for muscle glutamine and alanine synthesis is BCAAs, which are transaminated by BCAAT to glutamate.<sup>28</sup> Glutamate can then either pick up an  $\text{NH}_3$  molecule and be converted to glutamine by GLS (Equation 8) or react with pyruvate and be converted to alanine.<sup>28</sup> As such, BCAA metabolism plays a central role in controlling muscle glutamine and alanine synthesis and  $\text{NH}_3$  uptake (Figure 5).



**Figure 5** Schematic diagram of processes involved in N balance in the skeletal muscle.

**Notes:** During the postprandial state, muscle provides a reservoir for N, carbon, and energy stores. Glutamine and alanine are produced primarily by transamination of BCAAs. Normally, only a small fraction of the  $\text{NH}_3$  required for glutamine synthesis comes from blood  $\text{NH}_3$ , with the majority provided by muscle-protein metabolism. During states of hyperammonemia, the amount of  $\text{NH}_3$  removed by muscle may increase roughly linearly with arterial  $\text{NH}_3$  concentration.

**Abbreviations:** BCAAs, branched-chain amino acids, GLS, glutamine synthetase.

The  $\text{NH}_3$  required for glutamine synthesis can be provided either by uptake from the plasma or muscle AA metabolism. Muscle- $\text{NH}_3$  uptake is much lower than glutamine production, and in a number of studies no significant muscle- $\text{NH}_3$  uptakes have been detected.<sup>14</sup> In Table 1, the standard postprandial muscle- $\text{NH}_3$  uptake is about  $6 \mu\text{M}/\text{min}/70 \text{ kg}$ ,  $1/16$  the glutamine release of  $97 \mu\text{M}/\text{min}/70 \text{ kg}$ . Muscle clearly cannot rely on  $\text{NH}_3$  uptake from plasma for glutamine synthesis, because the rate of glutamine synthesis may be greater than the total rate of  $\text{NH}_3$  supplied by arterial blood flow (Figure 1). Therefore, most of the additional nitrogen released in the form of glutamine must come from muscle AA breakdown (Figure 5). Muscle utilizes the purine-nucleotide cycle to produce N from protein breakdown.<sup>50</sup>

Human muscle-tissue samples indicate that there is a large free muscle- $\text{NH}_3$  concentration of about  $150 \mu\text{M}$ ,<sup>98</sup> roughly similar to the  $300 \mu\text{M}$ <sup>99</sup>  $\text{NH}_3 K_m$  of GLS, the rate limiting enzyme of glutamine production. Since this is fivefold normal arterial  $\text{NH}_3$ , it is presumably supplied by muscle-protein catabolism. Although we have emphasized the role of muscle-glutamine release as a fuel and gluconeogenesis source during the postprandial period, another function of muscle glutamine emphasized by Chang et al<sup>100</sup> is as a means of “nitrogen disposal” during AA breakdown that is less toxic than  $\text{NH}_3$ .

The basal muscle- $\text{NH}_3$  uptake of  $6 \mu\text{M}/\text{min}/70 \text{ kg}$  is negligible relative to normal liver- $\text{NH}_3$  uptake ( $75 \mu\text{M}/\text{min}/70 \text{ kg}$ ). However, in a variety of animal studies, it has been shown that the rate of muscle- $\text{NH}_3$  uptake increases roughly linearly with arterial  $\text{NH}_3$ .<sup>14</sup> As discussed herein, in patients with increased  $\text{NH}_3$  secondary to cirrhosis<sup>101,102</sup> or acute liver failure (ALF),<sup>103</sup> this increased muscle- $\text{NH}_3$  uptake becomes important in limiting hyperammonemia.<sup>104</sup> Holeček

et al<sup>105</sup> showed that in an in vitro rat-muscle model, increased bathing  $\text{NH}_3$  concentration increased BCAA oxidation and glutamine synthesis, suggesting that the increased plasma  $\text{NH}_3$  in cirrhosis may directly activate BCAA metabolism.

During exercise, muscle-protein catabolism increases the rate of muscle- $\text{NH}_3$  production, with muscle becoming a net supplier of systemic  $\text{NH}_3$ .<sup>98,106</sup> In studies of Katz et al,<sup>98</sup> muscle  $\text{NH}_3$  balance went from a net  $\text{NH}_3$  uptake (for two legs) of about  $6 \mu\text{M}/\text{min}/70 \text{ kg}$  (identical to the value listed Table 1) during rest, to a small net release of about  $4 \mu\text{M}/\text{min}/70 \text{ kg}$  during submaximal exercise, rising markedly to  $178 \mu\text{M}/\text{min}/70 \text{ kg}$  during maximal exercise. This is associated with a small increase in arterial plasma  $\text{NH}_3$  from  $21 \mu\text{M}$  at rest to  $27 \mu\text{M}$  during submaximal exercise and a dramatic fivefold increase to  $112 \mu\text{M}$  during maximal exercise, when the rate of  $\text{NH}_3$  production is so high that it overwhelms the GLS system. Since submaximal exercise ( $50\% \text{VO}_{2\text{max}}$ ) produces only minor changes in muscle- $\text{NH}_3$  balance, it is assumed that the values in Table 1 are applicable to the human postprandial state, even during the normal daily exercise regimen. It should once again be emphasized that  $\text{NH}_3$  released by muscle does not undergo first-pass metabolism in the liver, and hence has a disproportionate effect on blood  $\text{NH}_3$  relative to intestinally produced  $\text{NH}_3$ .

As this discussion indicates, muscle GLS has at least two important functions related to  $\text{NH}_3$ : it converts the muscle  $\text{NH}_3$  produced during postprandial protein catabolism to glutamine, and during hyperammonemia, it is an important factor in removing systemic  $\text{NH}_3$ . A direct confirmation of these two muscle-GLS functions was provided by He et al,<sup>45</sup> in which GLS was selectively knocked out in mouse skeletal muscle. The knockout (KO) mice were healthy and fertile, with normal weight gain and organ histology. Fed KO mice had relatively normal blood chemistry, including normal arterial glutamine. However, major differences became apparent during fasting, when presumably muscle-protein catabolism becomes important. At 20 hours of fasting, the rate of muscle (actually, hindquarter)-glutamine production increased more than fourfold over the fed state in wild-type mice, but was unchanged from the fed state in the KO mice. The second GLS function was tested by IV administration of  $\text{NH}_4\text{HCO}_3$  at varying rates. In control mice, blood  $\text{NH}_3$  remained relatively normal until the rate exceeded  $40 \mu\text{M}/\text{h}$ , after which it rose rapidly, increasing eightfold at rates of  $50 \mu\text{M}/\text{h}$ . This indicates that normal  $\text{NH}_3$ -metabolizing functions in such tissue as liver and muscle become saturated and have a maximal removal rate of  $40 \mu\text{M}/\text{h}/\text{mouse}$ . In the KO mouse, this maximal removal rate was reduced by half to  $20 \mu\text{M}/\text{h}/$

mouse. Since the only difference between the normal and KO mice was the lack of muscle GLS, this implies that muscle contributes 50% to mouse  $\text{NH}_3$ -metabolizing potential during hyperammonemia. It may seem antithetical to state that muscle is a major site of  $\text{NH}_3$  removal when it was emphasized in the “Urea balance” section that renal urea secretion is the only N-excretory process in humans. In actuality, the  $\text{NH}_3$  taken up by muscle is used to synthesize AAs (primarily glutamine and alanine), which are then converted to urea by the liver. To the extent that some of this glutamine is metabolized to  $\text{NH}_3$  in such organs as kidneys or intestines, this concept of net muscle- $\text{NH}_3$  removal is incorrect.

## Liver N balance

As previously discussed and summarized in Table 1, the liver is the major organ responsible for normal  $\text{NH}_3$  removal (ie, detoxification). There are two pathways involved: periportal hepatocyte conversion of  $\text{NH}_3$  to urea by the urea-cycle system, and perivenous hepatocyte conversion of  $\text{NH}_3$  to glutamine by GLS (Equation 8). These processes are illustrated in Figure 2. Resection of up to 90% of the liver in the pig surprisingly results in no significant change in serum  $\text{NH}_3$  levels,<sup>107</sup> indicating that liver- $\text{NH}_3$ -detoxifying capacity is far in excess of normal requirements. It also suggests that liver- $\text{NH}_3$  metabolism is responding to some sort of arterial blood  $\text{NH}_3$  set point and is independent of absolute liver mass. This raises the possibility that the  $\text{NH}_3$  normally presents in blood has a physiological function yet to be demonstrated.

A significant fraction of glutamine entering the liver is catabolized to urea by the standard AA-metabolic process (transamination to glutamate, which then enters urea cycle) in periportal hepatocytes. However, this fraction cannot be determined simply from the net liver balance in Table 1, because glutamine is also synthesized from glutamate in perivenous hepatocytes (Equation 8), and liver-glutamine balance is the difference between the rate of glutamine production and glutamine catabolism:

$$\text{Net glutamine output} = \text{Glutamine production} - \text{Glutamine catabolism} \quad (12)$$

Since glutamine output is approximately zero (Table 1), glutamine production and catabolism are about equal. Of the total liver- $\text{NH}_3$  removal rate ( $75 \mu\text{mol}/\text{min}/70 \text{ kg}$ , Table 1), about 50% results from glutamine production, implying that liver-glutamine production is about  $37 \mu\text{mol}/\text{min}/70 \text{ kg}$ . Therefore, from Equation 12, liver-glutamine catabolism must

also be about  $37 \mu\text{mol}/\text{min}/70 \text{ kg}$ . This is a major component of glutamine metabolism (37% of total muscle-glutamine production, Table 1), and the liver is primarily responsible for controlling steady-state glutamine arterial concentration. Knocking out this glutamine catabolism produces a 25-fold increase in arterial glutamine.<sup>108</sup>

The importance of the hepatic GLS mechanism was clarified by a recent (2017) interesting study in which GLS was selectively knocked out in mouse liver.<sup>56</sup> The KO mice had about doubled elevation of arterial  $\text{NH}_3$  and a third decrease in arterial glutamine. In the postabsorptive state when there is muscle protein breakdown and increased  $\text{NH}_3$  production, there was a marked decrease in the rate of glutamine production by the liver in the KO mice. It was also shown that the GLS system had relatively high  $\text{NH}_3$  affinity compared to the urea-cycle system, and in wild-type mice it accounted for about 50% of total  $\text{NH}_3$  detoxification. It was concluded that in wild-type mice, 70% of the  $\text{NH}_3$  delivered to the liver was cleared: 35% by the GLS system and 35% by the urea-cycle system. Again, as was discussed in the “Muscle N balance” section, the glutamine produced must eventually be converted to urea for net N removal.

In the same study, GLS KO mice had a 50% decrease in muscle mass and a threefold increase in fat mass.<sup>56</sup> Although the mechanisms responsible for this are unknown, one possibility is that arterial glutamine concentration is a signal controlling muscle and fat contributions to postprandial fuel supply. The decreased arterial glutamine (ie, fuel) in the KO mice may be a signal for increasing muscle breakdown and increasing adipose-energy stores.

As illustrated in Figure 1, the GI tract is the major producer of systemic  $\text{NH}_3$ , with portal vein- $\text{NH}_3$  concentration three times the arterial. Normally, the rate that the liver removes  $\text{NH}_3$  exceeds the rate that  $\text{NH}_3$  is added to portal blood flow by the gut, such that the hepatic vein- $\text{NH}_3$  concentration is only 80% that of arterial blood. As is discussed herein, one of the major causes of hyperammonemia in cirrhotic patients is the shunting of portal blood around the liver, and we try to relate quantitatively the degree of shunting to hyperammonemia. There is some confusion in the literature about how to quantify this portal  $\text{NH}_3$  metabolism. The standard pharmacokinetic term is “first-pass metabolism”, which is defined as the fraction of an orally absorbed drug that does not reach systemic circulation.<sup>109</sup> Since this cannot be applied to an endogenous solute, such as  $\text{NH}_3$ , an alternative definition is necessary. Nomura et al<sup>110</sup> define “hepatic extraction” simply in terms of portal vein ( $C_{\text{PV}}$ ) and hepatic vein ( $C_{\text{HV}}$ )  $\text{NH}_3$  concentration:



$$\text{Hepatic extraction} = (C_{PV} - C_{HV})/C_{PV} \quad (13)$$

This simple definition is only approximate, because it neglects the hepatic artery- $\text{NH}_3$  contribution to  $C_{HV}$ . In our analysis of the effect of portal shunting, we use another definition – fraction metabolized ( $F_{\text{Met}}$ ) – which is the fraction of total  $\text{NH}_3$  reaching the liver that is metabolized:

$$\text{Fraction metabolized} = F_{\text{Met}} = \frac{Q_{PV}C_{PV} + Q_{HA}C_{Ar} - Q_{HV}C_{HV}}{Q_{PV}C_{PV} + Q_{HA}C_{Ar}} \quad (14)$$

where  $Q_{PV}$ ,  $Q_{HA}$ , and  $Q_{HV}$  are portal vein, hepatic artery, and hepatic vein blood-flow rates, respectively. For the data in Table 1, the hepatic extraction (Equation 13) is 73%, similar to that found experimentally in a series of patients with idiopathic portal hypertension<sup>110</sup> or during cholecystectomy.<sup>111</sup> Using the flow rates and concentrations listed in Table 1, the fraction metabolized (Equation 14) is 67%, similar to values reported in mice, cows, lambs, and rats.<sup>57</sup>

## Hyperammonemia associated with CLD and acute liver failure

Hyperammonemia is commonly observed in CLD, and the potential for this elevated  $\text{NH}_3$  to cause HE is the primary reason for the strong interest in the pathophysiology of blood  $\text{NH}_3$ . Plasma  $\text{NH}_3$  increases with severity of CLD classified by the Child–Pugh score, rising from a normal value of about 30–45  $\mu\text{M}$  (high normal) for Child–Pugh A to 66  $\mu\text{M}$  in Child–Pugh B and 108  $\mu\text{M}$  in Child–Pugh C<sup>112</sup> (assignment of Child–Pugh score does not depend on plasma  $\text{NH}_3$ ). In the most severe forms of CLD, with marked HE, arterial  $\text{NH}_3$  can increase to 250  $\mu\text{M}$  or higher.<sup>113</sup>

Although multiple factors influence the degree of hyperammonemia, it has long been recognized that most important is the shunting of portal blood past the liver. As discussed, the GI tract is the major producer of systemic  $\text{NH}_3$ , with portal vein- $\text{NH}_3$  concentration three times arterial concentration. Normally, all the portal blood passes through the liver, which extracts  $\text{NH}_3$  more quickly than it is produced in the gut, thus maintaining low levels of  $\text{NH}_3$  in the systemic circulation. A portal to systemic shunt allows  $\text{NH}_3$  produced in the gut to circumvent the liver and enter the systemic circulation. Since the liver clears about 70% of the  $\text{NH}_3$ , a portal shunt effectively increases the delivery of  $\text{NH}_3$  to the systemic blood about threefold. The classic experimental model of such shunting is the “Eck fistula”<sup>114</sup> described by Eck in 1877,<sup>115</sup> in which all the portal blood flow is shunted to the inferior vena cava in

the dog. In 1893, Hahn et al carried out detailed and extended studies of Eck fistulae and described that these dogs developed severe HE.<sup>1,2</sup> It was not until the 1950s that it was recognized that the GI tract was a major source of  $\text{NH}_3$  production and that the portacaval shunt allowed this  $\text{NH}_3$  to bypass the liver.<sup>116–118</sup> In monkeys on a normal protein diet, plasma  $\text{NH}_3$  levels increase fourfold after creating a portacaval shunt, and rapidly fall back to normal levels if the shunt is closed.<sup>119</sup>

Qualitatively, the increase in blood  $\text{NH}_3$  is correlated with the severity of the portosystemic shunt.<sup>112</sup> However, there are only a small number of quantitative measurements of portosystemic shunt flow in humans, and no measurements that have directly correlated this shunt flow with arterial  $\text{NH}_3$ . Moreno et al<sup>120</sup> reported that the portal vein flow rate entering the liver in patients with advanced CLD is on average only about 32% of normal. If the total GI-tract flow remained constant, this would imply that about 68% of the normal GI flow is shunted to the systemic circulation. This is directly supported by the measurements of Groszmann et al<sup>121</sup> who found that on average 62% of mesenteric flow and 60% of splenic flow were shunted past the liver in CLD. In severe CLD, the portal flow can be reduced to zero,<sup>120</sup> and for a small fraction (8%), reverse flow (hepatofugal) has been observed in portal vein Doppler-flow measurements.<sup>122</sup>

The following highly simplified model can be employed to make a quantitative estimate of the effect of a portosystemic shunt on arterial  $\text{NH}_3$ . It will be assumed that in patients with portal shunts: 1) The “Fraction Metabolized” ( $F_{\text{Met}}$ , eq. ) of the  $\text{NH}_3$  that enters the liver is unchanged from the normal value of 67% determined above; 2) the rates of  $\text{NH}_3$  production by the kidney ( $M_{\text{Ren}} = 15 \mu\text{M}/\text{min}/70\text{kg}$ ) and GI tract ( $M_{\text{GI}} = 66 \mu\text{M}/\text{min}/70\text{kg}$ ), and utilization by muscle ( $M_{\text{Mus}} = -6 \mu\text{M}/\text{min}/70\text{kg}$ ) are unchanged from the normal values in Table 1; and 3) the total portal vein ( $Q_{PV}$ ) and hepatic artery ( $Q_{HA}$ ) blood flow rates are unchanged from the normal values (Table 1). The change in steady-state  $\text{NH}_3$  arterial concentration as a function of the fraction of portal vein blood that is shunted ( $f_{\text{shunt}}$ ) can then be calculated using the following analysis.

In the steady state, the  $\text{NH}_3$  metabolized by the liver must balance the total amount made by the kidney, GI tract, and muscle:

$$F_{\text{Met}}[(1 - f_{\text{shunt}})Q_{PV}C_{PV} + Q_{HA}C_{Ar}] = M_{\text{Ren}} + M_{\text{GI}} + M_{\text{mus}} \quad (15)$$

and  $C_{PV}$  can be related to arterial concentration ( $C_{Ar}$ ) by Equation 4:



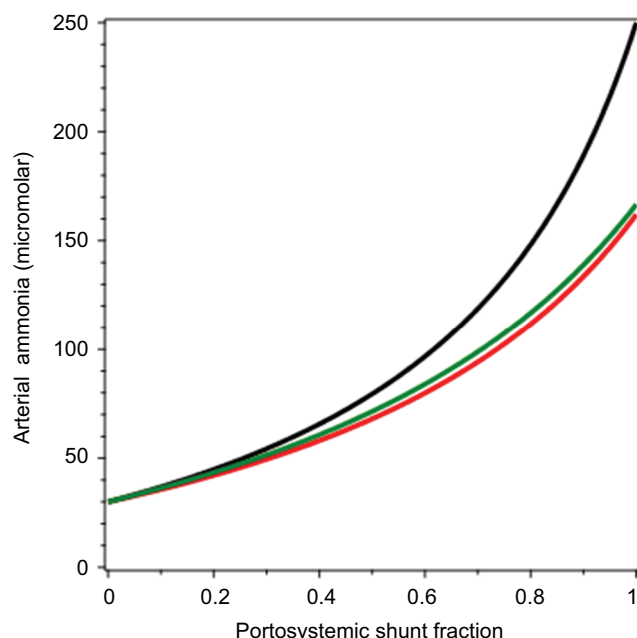
$$\begin{aligned} Q_{PV}(C_{PV} - C_{Art}) &= M_{GI} \\ \Rightarrow C_{PV} &= C_{Art} + M_{GI} / Q_{PV} \end{aligned} \quad (16)$$

Upon solving Equations 15 and 16, one can determine the steady-state  $\text{NH}_3$   $C_{Art}$  as a function of  $f_{shunt}$ :

$$C_{Art} = \frac{F_{Met} M_{GI}(1 - f_{shunt}) - M_{GI} - M_{Mus} = M_{Ren}}{F_{Met}(Q_{PV} f_{shunt} - Q_{HA} - Q_{PV})} \quad (17)$$

Noiret et al<sup>123</sup> described a similar, but much more detailed modeling of portosystemic shunting using a somewhat different set of parameters. It should be emphasized that because of the uncertainty in the parameters in Table 1 and how they vary in patients with CLD, these models are very approximate and useful primarily in a heuristic manner to illustrate the effect of a portosystemic shunt on arterial  $\text{NH}_3$ .

A plot of arterial  $\text{NH}_3$  ( $C_{Art}$ ) as a function of  $f_{shunt}$  (Equation 17) is shown in Figure 6 (black line). It can be seen that as  $f_{shunt}$  increases from 0 to 1,  $C_{Art}$  increases from 30  $\mu\text{M}$  to about 250  $\mu\text{M}$ . This latter value is similar to the  $C_{Art}$  levels that are reached in patients with severe CLD.<sup>113</sup> For the average advanced CLD shunt value of 65%,<sup>120</sup>  $C_{Art}$  is 107  $\mu\text{M}$ , similar to what is observed in Child–Pugh class C patients.<sup>112</sup> As



**Figure 6** Arterial  $\text{NH}_3$  concentration as a function of the fraction of portal blood shunted to systemic veins, bypassing the liver.

**Notes:** The black line represents rates of  $\text{NH}_3$  production by the kidney and gastrointestinal tract and utilization by muscle, unchanged from the normal values listed in Table 1. The red line represents muscle  $\text{NH}_3$  utilization in proportion to arterial  $\text{NH}_3$ , increasing as arterial  $\text{NH}_3$  increases. The green line represents hepatic artery blood increasing to compensate for decreased portal liver flow, increasing linearly by a factor of 1.5 as the shunt fraction goes from 0 to 1.

such, this analysis shows that most of the hyperammonemia observed in CLD can be accounted for simply by portosystemic shunting, without invoking any other pathophysiology, such as poor hepatocellular function.

The fundamental assumption in the derivation of Equation 17 is that the normal  $\text{NH}_3$ -balance parameters listed in Table 1 are unchanged in CLD. Actually, there are at least two adjustments in CLD that would be expected to blunt the increase in  $C_{Art}$  resulting from portosystemic shunting. The first is an increased rate of muscle- $\text{NH}_3$  consumption ( $M_{Mus}$ ) as  $C_{Art}$  increases. Bessman and Bradley<sup>101</sup> reported that in CLD patients, the increase in  $M_{Mus}$  was roughly proportional to  $C_{Art}$  (there was also a smaller and more variable increase in brain uptake<sup>101</sup> that we neglect). We can modify this derivation by assuming that  $M_{Mus}$  is directly proportional to  $C_{Art}$ :

$$M_{Mus} = M_{Mus}^0 C_{Art} / C_{Art}^0 \quad (18)$$

where  $M_{Mus}^0$  is the normal value of muscle- $\text{NH}_3$  uptake (6  $\mu\text{m}/\text{min}/70 \text{ kg}$ , Table 1) and  $C_{Art}^0$  is the normal  $\text{NH}_3$  arterial concentration (30  $\mu\text{M}$ ). Substituting Equation 18 into Equation 15 and solving for  $C_{Art}$  as a function of  $f_{shunt}$ :

$$C_{Art} = \frac{C_{Art}^0 (F_{Met} M_{GI} f_{shunt} - F_{Met} M_{GI} + M_{GI} + M_{Ren})}{C_{Art}^0 F_{Met} (Q_{HA} + Q_{PV} - Q_{PV} f_{shunt}) - M_{Mus}^0} \quad (19)$$

The result of this calculation is plotted as the red line in Figure 5. It can be seen that this increase in muscle- $\text{NH}_3$  uptake reduces the increase in  $C_{Art}$ , which reaches a maximum of about 162  $\mu\text{M}$  when  $f_{shunt} = 1$ .

As discussed in the “Muscle N balance” section,  $\text{NH}_3$  taken up by muscle is converted to glutamine. To the extent that this new glutamine is actually metabolized, eg, in kidneys or intestines, to glutamate and  $\text{NH}_3$ , the assumption in Equation 19 that increased muscle- $\text{NH}_3$  uptake results in net  $\text{NH}_3$  removal from the body is wrong. Holeček<sup>30</sup> suggested that this recycling of glutamine to  $\text{NH}_3$  was a “vicious cycle”, increasing the hyperammonemia in CLD. However, as discussed, the liver’s conversion of glutamine to urea is the major pathway regulating plasma glutamine, suggesting that most of the additional glutamine production resulting from increased  $\text{NH}_3$  uptake may be directly converted to urea by the liver.

The second factor that can blunt the increase in  $C_{Art}$  is a compensatory increase in  $Q_{HA}$  as  $Q_{PV}$  is reduced. There is a well-established “hepatic arterial buffer response” that tends to maintain total liver flow constant as  $Q_{PV}$  is decreased in the normal liver.<sup>122,124</sup> However, this response is less pronounced

in CLD,<sup>125</sup> and measurements in CLD are suggestive of only a small (if any) increase in  $Q_{HA}$ .<sup>126,127</sup> To illustrate the potential effect of a compensatory increase in  $Q_{HA}$ , it was assumed that  $Q_{HA}$  increases by 50% as  $f_{shunt}$  goes to 1:

$$Q_{HA} = Q_{HA}^0 (1 + 0.5 f_{shunt}) \quad (20)$$

where  $Q_{HA}^0$  is the normal hepatic artery flow (0.45 L/min, Table 1). Substituting Equation 20 into Equation 15 and solving for  $C_{Art}$  as a function of  $f_{shunt}$ :

$$C_{Art} = \frac{2(F_{Met} M_{GI} f_{shunt} - F_{Met} M_{GI} + M_{GI} + M_{Mus} + M_{Ren})}{F_{Met} (Q_{HA}^0 f_{shunt} - 2Q_{PV} f_{shunt} + 2Q_{HA}^0 + 2Q_{PV})} \quad (21)$$

This is plotted as the green line in Figure 6. It can be seen that this increase in  $Q_{HA}$  produces roughly the same blunting of the increase in  $C_{Art}$  as the increase in  $M_{Mus}$  (red line).

Creation of shunts between the portal system and the hepatic vein or vena cava has been commonly employed to reduce portal pressure in patients with intractable ascites or variceal bleeding. Walser et al<sup>128</sup> estimated that 3 months after establishing a transjugular intrahepatic portosystemic shunt (TIPSS),  $f_{shunt}$  ranged 0.84–1, with an average value of 0.93. Using Equation 17, one would predict that increasing  $f_{shunt}$  from the pre-TIPSS value of 0.65<sup>120</sup> to the post-TIPSS value of 0.93, with all other factors remaining unchanged, should increase  $C_{Art}$  from 107 to 204  $\mu$ M. The most serious clinical complication of TIPSS is an increased HE,<sup>4</sup> presumably as a result of this increased  $NH_3$ . However, an increase in  $C_{Art}$  does not necessarily follow creation of the shunts. There is no significant increase in  $C_{Art}$  2 weeks following end-to-side portacaval shunts<sup>129</sup> or 1 hour following a TIPSS,<sup>102</sup> suggesting that there must be compensating factors. An obvious candidate is the well-established increase in  $Q_{HA}$  (up to double) that results from decreased portal vein pressure following surgical creation of the shunt.<sup>127,130,131</sup> Recently, Damink et al<sup>14,48,102,132</sup> carried out the most detailed available measurements of the effect of TIPSS on N and  $NH_3$  balance. They established that compensating changes in renal  $NH_3$  release to the systemic circulation ( $M_{Ren}$ ) can significantly alter  $C_{Art}$ . For example, they found that 1 hour following a TIPSS,  $M_{Ren}$  decreased by 22  $\mu$ m/min/70 kg, presumably because of systemic hemodynamic changes produced by the stent.<sup>102</sup> Assuming that the overall effect of the stent is to increase  $f_{shunt}$  from 0.65 to 0.93, while  $Q_{HA}$  increases 50% and  $M_{Ren}$  decreases by 22  $\mu$ m/min/70 kg, one finds using Equation 17 that pre- and poststent  $C_{Art}$  are 107 and 101  $\mu$ M, respectively. Therefore, the calculated effect

of these compensating factors can prevent a TIPSS-induced increase in  $C_{Art}$ , as is observed experimentally.

A basic assumption of this discussion is that the  $F_{Met}$  (Equation 14) of the unshunted liver blood flow is normal in CLD, so the primary cause of the increased  $C_{Art}$  is portosystemic shunting. An alternative possibility is that liver- $NH_3$  clearance processes and  $F_{Met}$  are impaired in CLD. The definition of  $F_{Met}$  is problematic, because a fraction of the shunt may be intrahepatic and thus  $C_{HV}$  (Equation 14) represents both blood that has passed through functioning liver and shunted blood. One can correct for this by using <sup>99m</sup>Tc-macroaggregated albumin to quantitate the intrahepatic shunting. Nomura et al<sup>110</sup> found that liver hepatic extraction (Equation 13) decreased as the severity of the CLD increased: from 77% in controls (patients with idiopathic portal hypertension) to 50% in Child–Pugh class A and 40% in Child–Pugh class B or C cirrhosis. However, if these measurements are corrected for intrahepatic shunting, the  $F_{Met}$  of the unshunted blood remains relatively normal in these CLD patients. When the severity of CLD approaches the point where liver cells become nonfunctional, obviously significant impairment in  $F_{Met}$  would be expected. The classic human model of a severe defect in  $F_{Met}$  is ALF.

ALF is the sudden loss of a large fraction of liver function in a subject with no preexisting disease and presumably no portosystemic shunts. Among the liver functions reduced are  $NH_3$ -uptake processes along with metabolism of AAs (including glutamine and alanine) to urea. In 22 ALF patients, Clemmesen et al<sup>103</sup> made detailed measurements of urea, AA, and  $NH_3$  balance across the splanchnic bed, ie, the GI tract plus liver determined from arterial–hepatic vein  $NH_3$ -concentration difference and hepatic blood flow. In addition, they measured arterial–venous differences across a lower extremity. The patients were in an approximate steady state, with arterial  $NH_3$  increased to 182  $\mu$ M (four times their normal of 46  $\mu$ M) and glutamine increased to 2,393  $\mu$ M (four times their normal of 568  $\mu$ M). Most of the other AA concentrations are also increased three- to fourfold, with the major exception of BCAAs, whose concentrations were decreased from their normal values (valine 198–159  $\mu$ M, leucine 110–85  $\mu$ M, and isoleucine 57–28  $\mu$ M). This is direct confirmation of the unique BCAA metabolism: as the normal liver cannot metabolize BCAAs because of the lack of the BCAA transaminase, liver failure should have no effect on their systemic plasma concentration. The decrease in plasma-BCAA concentration may be the result of increased muscle-BCAA conversion to glutamine stimulated by hyperammonemia<sup>30</sup> or more simply associated with general malnourishment in liver failure.

As discussed, normally the main site of  $\text{NH}_3$  production is the GI tract, with all this  $\text{NH}_3$  removed by the liver, so that overall there is a small net splanchnic  $\text{NH}_3$  extraction. In marked contrast, in ALF there is a large net splanchnic production of  $109 \mu\text{M}/\text{min}/70 \text{ kg}$  compared to a splanchnic extraction of  $9 \mu\text{M}/\text{min}/70 \text{ kg}$  in normal controls (Clemmesen et al<sup>103</sup> could not determine liver extraction [ $F_{\text{Met}}$ ], because they did not sample the portal vein). This decreased liver- $\text{NH}_3$  metabolism is balanced by increased lower-extremity (ie, muscle)- $\text{NH}_3$  uptake, which as discussed is roughly proportional to arterial  $\text{NH}_3$ . Some liver function remains because the liver urea-production rate is about 42% of normal, with arterial urea concentration increased threefold. Using this mathematical model with no shunt and assuming that muscle- $\text{NH}_3$  uptake is proportional to arterial  $\text{NH}_3$  ( $C_{\text{Art}}$ , Equation 19),  $F_{\text{Met}}$  would have to be reduced to about 20% of normal in order to increase  $C_{\text{Art}}$  to  $182 \mu\text{M}$  found in ALF patients. The ALF rate of muscle- $\text{NH}_3$  removal is linearly related to the rate of muscle-glutamine production, with about two glutamine molecules produced for each  $\text{NH}_3$  consumed. The ALF rates of splanchnic alanine and  $\text{NH}_3$  production are nearly equal, suggesting that the increased splanchnic  $\text{NH}_3$  production arises primarily from GI-tract metabolism of glutamine to  $\text{NH}_3$  and alanine (Equation 7), rather than from bacterial urea metabolism.

## Enzyme deficiencies

As summarized in Figures 1 and 2, AA turnover produces about  $1 \text{ M}/70 \text{ kg}/\text{day}$  of  $\text{NH}_3$ , most of which is converted to urea by the urea cycle and does not normally contribute to blood  $\text{NH}_3$ . In patients with genetic defects in the urea cycle, this conversion is slowed, with potential for massive increase in blood  $\text{NH}_3$ . There are eight enzymes required for normal urea-cycle function, and deficiencies in any of these can produce increased blood  $\text{NH}_3$ .<sup>133</sup> The severity of the defect depends on the enzyme involved and the degree of its loss of function. Unlike CLD, where defects in hepatic detoxification can produce myriad compounds that can contribute to HE, urea-cycle defects represent pure hyperammonemia. Although there are a variety of associated changes in the plasma concentration of urea-cycle intermediates (eg, ornithine, citrulline, arginine) the clinical symptoms are the result of the hyperammonemia, which is the defining feature.<sup>134</sup>

In the most severe forms, such as carbamoyl phosphate synthetase 1 (CPS1) deficiency, which affects the first step in the urea cycle, infants develop severe hyperammonemia ( $1,000 \mu\text{M}$  or greater) within 3 days of birth, producing catastrophic HE (eg, respiratory distress, convulsions) that

is fatal unless treated acutely with mechanical ventilator and/or dialysis and chronically with protein restriction, IV  $\text{NH}_3$  scavengers (eg, sodium benzoate), and urea-cycle intermediates.<sup>135</sup> About half of affected neonates die from HE coma.<sup>134</sup> Most of the longer-surviving subjects have moderate-severe long-term neurocognitive disorders.<sup>135</sup>

When there is only a partial enzyme deficiency, the onset of overt symptoms may be delayed for months or years, with acute episodes of symptomatic hyperammonemia ( $>100 \mu\text{M}$ ) produced by some triggering event, such as an infection. These episodes are marked by a wide range of symptoms, including loss of appetite, cyclical vomiting, lethargy, hallucinations, and psychosis. Although these children have longer-term survival, they have high morbidity (eg, developmental disabilities, cerebral palsy, seizure disorders).<sup>134</sup> On occasion, a seemingly healthy adult with a minor defect may present with hyperammonemia and HE when some triggering event increases  $\text{NH}_3$  production and/or reduces the borderline urea-cycle function.

## Gastrointestinal therapeutic approaches to lowering blood ammonia

The association of increased arterial  $\text{NH}_3$  with HE has led to therapeutic strategies for lowering  $\text{NH}_3$ .<sup>3</sup> Because the portal shunting of GI-produced  $\text{NH}_3$  is the primary source of  $\text{NH}_3$ , the therapeutic focus is directed at reducing  $\text{NH}_3$  production in the gut. As discussed, the quantitative estimates of the magnitude of the three GI-tract  $\text{NH}_3$ -producing processes are: bacterial urea hydrolysis =  $122 \mu\text{M}/\text{min}/70 \text{ kg}$ , bacterial protein deamination =  $29 \mu\text{M}/\text{min}/70 \text{ kg}$ , and intestinal mucosal glutamine metabolism =  $\sim 20 \mu\text{M}/\text{min}/70 \text{ kg}$ .

In the past, low-protein diets were widely recommended for hyperammonemia and HE. The N-balance diagram in Figure 1 shows that the relationship between protein intake and blood  $\text{NH}_3$  is indirect and ambiguous. As has been emphasized, since metabolism of dietary AAs by the liver to urea by the urea cycle does not alter blood  $\text{NH}_3$ , no direct relationship between protein intake and blood  $\text{NH}_3$  would be expected. However, there is an indirect relation, because as discussed in detail in the “GI-tract N balance” section, 20% of the urea production is metabolized to urea in the GI tract by bacterial urease and 50% or more of portal vein  $\text{NH}_3$  could be derived from this urea metabolism. Protein restriction should reduce blood urea, which in turn would reduce blood  $\text{NH}_3$  if it resulted in less GI-tract bacterial production of urea-based  $\text{NH}_3$  production. As discussed in the “GI-tract N balance” section, because the intestinal urease is nearly

saturated at normal blood-urea concentration, the relationship between blood-urea concentration and bacterial urea production is nonlinear. Picou and Phillips<sup>136</sup> found that children on a low-protein diet (30% of normal), had a fivefold decrease in the rate of urea production (and presumably blood urea), and as predicted a proportionally smaller twofold decrease in the absolute rate of bacterial urea hydrolysis. Young et al<sup>137</sup> compared rates of urea production and hydrolysis in adults on a normal-protein diet (11.6 g N/day) vs a high-protein diet (2.4 times normal) and low-protein diet (quarter of normal). On the low-protein diet, urea production was 52% of normal and urea hydrolysis 59% of normal. The high-protein diet increased the rate of urea production by a factor of 2.45 (identical to the 2.4-fold increase in protein intake). However, as predicted, there was no significant increase in the absolute rate of urea hydrolysis (relative to the normal-protein diet), since presumably bacterial urease was saturated at the urea levels achieved with the normal-protein diet. These results suggest that since urea hydrolysis represents the largest component of GI-tract  $\text{NH}_3$  production, if severe enough, protein restriction should significantly reduce serum  $\text{NH}_3$  in CLD patients.

Surprisingly, there have been no well-controlled studies on the effect of a low-protein diet on blood  $\text{NH}_3$  in CLD.<sup>138,139</sup> In 2004, Cordoba et al<sup>138</sup> described the first randomized study of the effect of a low-protein diet plus neomycin (delivered by nasogastric tube) in patients with an episodic HE. The protein restriction had no significant effect on either the outcome of the HE or blood- $\text{NH}_3$  levels. Because of this result, coupled with the observation that low-protein diets have a deleterious effect on nutritional status in CLD patients, protein restriction is no longer recommended.<sup>3,140</sup> The apparent explanation for the failure of Cordoba et al to observe a decrease in blood  $\text{NH}_3$  in their CLD patients may be attributable to the fact that both the control and low-protein arms of the study were receiving neomycin therapy, which would be expected to decrease bacterial urea metabolism.

Historically, the association between ingested protein and HE was supported by the original observation of Eck in 1877<sup>115</sup> that dogs with a portacaval shunt developed HE when they were fed meat. Similarly, the administration of bovine erythrocytes has been used as an experimental model to induce HE in rats with portacaval anastomosis.<sup>141</sup> In humans, this association of HE with dietary protein is supported by the common observation that HE is precipitated by GI bleeding in patients with hepatic cirrhosis<sup>132,142</sup> (in nonanemic subjects, blood contains about 20 g/dL protein). This effect of gastric bleeding was confirmed experimentally

by Bessman and Mirick<sup>142</sup> in 1958, who showed that blood  $\text{NH}_3$  roughly doubled 4 hours after intragastric administration of blood to patients with CLD, but had no effect in normal controls. This interesting result was recently studied in much more detail by Damink et al.<sup>132</sup> They directly measured the  $\text{NH}_3$  balance across the GI tract, liver, leg (ie, muscle), and kidney in patients with cirrhosis and a TIPSS when administered an intragastric AA solution that simulated blood. The simulated blood increased arterial  $\text{NH}_3$  by a factor of 1.62 after 4 hours. Surprisingly, this increase seemingly resulted from an increase in renal  $\text{NH}_3$  production, with no significant change in either GI-tract or liver- $\text{NH}_3$  balance. Although the mechanism of the increased renal  $\text{NH}_3$  production is not clear, these results indicate that a single oral protein dose does not increase GI-tract  $\text{NH}_3$  production.

As discussed in the “Muscle N balance” section, muscle-glutamine production and  $\text{NH}_3$  consumption (Equation 8) result from the conversion of muscle BCAAs to glutamine. In addition, it has been suggested that increased blood  $\text{NH}_3$  in CLD leads to increased BCAA breakdown, contributing to the cachexia associated with CLD.<sup>28</sup> This has led to the idea that increased dietary BCAAs may be an effective way to lower blood  $\text{NH}_3$  and treat the cachexia of CLD.<sup>28,31</sup> Unfortunately, clinical trials of BCAA diet supplements have shown conflicting results, with some studies actually finding an increase in blood  $\text{NH}_3$ .<sup>31</sup>

With the recognition in the 1950s of the large contribution of GI-tract bacterial urea metabolism to  $\text{NH}_3$  production, focus was directed at reducing or eliminating this bacterial population. Antibiotic therapy became a standard in the treatment of HE after the report of Fisher and Falcon<sup>117</sup> in 1957 that venous blood  $\text{NH}_3$  in CLD patients fell by half or more after 3 days of neomycin therapy. Because such antibiotics as neomycin, metronidazole, and vancomycin have some associated side effects, poorly absorbed rifaximin has now become the standard antibiotic therapy for HE.<sup>3</sup> A number of controlled randomized trials have shown that a few days of rifaximin therapy results in statistically significant reductions in blood  $\text{NH}_3$ , with posttreatment  $\text{NH}_3$  33%–67% of pretreatment  $\text{NH}_3$ .<sup>143–146</sup>

In 1966, Bircher et al<sup>147</sup> showed that reductions in blood  $\text{NH}_3$  could be obtained by chronic administration of the unabsorbable disaccharide lactulose. In a meta-analysis of four randomized comparisons of unabsorbable lactulose versus rifaximin, Wu et al<sup>148</sup> concluded that although the disaccharide lowered blood  $\text{NH}_3$ , the reduction was significantly less than that observed with rifaximin in three of the four studies. The exception was the study of Paik et al,<sup>145</sup> which found



that lactulose and rifaximin had a nearly identical effect on blood  $\text{NH}_3$ , with  $\text{NH}_3$  being lowered from 192  $\mu\text{M}$  to 128  $\mu\text{M}$  by lactulose and from 204  $\mu\text{M}$  to 138  $\mu\text{M}$  by rifaximin. Because of their relative safety, unabsorbable disaccharides are regarded as the standard, first-line therapy for HE.<sup>3</sup>

Despite the relatively enormous use of lactulose as therapy for HE, the mechanistic basis of its  $\text{NH}_3$ -lowering action is uncertain.<sup>149</sup> Virtually all ingested lactulose reaches the colon, where it is fermented by colonic flora to short-chain organic acids with the production of acidic colonic contents, as well as diarrhea. Lactulose is more effective at reducing serum  $\text{NH}_3$  than other cathartics, ie, polyethylene glycol; therefore, it has been assumed that the ability of lactulose to acidify the colon is responsible for its beneficial effect. Initially, it was postulated that this acidification increased the  $\text{NH}_4^+:\text{NH}_3$  ratio, with a resultant luminal “trapping” of  $\text{NH}_3$  via diminished nonionic diffusion. This excess  $\text{NH}_3$  would then be fecally excreted, possibly facilitated by the cathartic effect of lactulose. However, the quantity of  $\text{NH}_3$  excreted in feces has been shown to be minimal in both the basal and postlactulose situation,<sup>150,151</sup> ruling out the possibility that trapping of  $\text{NH}_3$  accounts for the decline in serum  $\text{NH}_3$  observed with lactulose.

In vitro research has shown that colonic content acidity levels resulting from lactulose fermentation reduce the rate of fecal bacterial deamination of urea and protein.<sup>152</sup> However, if the quantitative estimates of  $\text{NH}_3$  production discussed in the “GI-tract N balance” section are correct, protein deamination accounts for only about 16% of total GI-tract  $\text{NH}_3$  production, and thus one would not expect this action of lactulose to have a large effect on plasma  $\text{NH}_3$ . Also as discussed in the “GI-tract N balance” section, the limitation in the rate that urea can diffuse to the large intestinal lumen suggests that any  $\text{NH}_3$ -lowering action of lactulose due to decreased bacterial urea breakdown may be an extracolonic action.

Lactulose has dramatic small-intestine effects. In patients with terminal ileostomies, adding 40 g lactulose to a meal reduces intestine-transit time by about 40% and increases total ileal effluent fivefold.<sup>153,154</sup> This produces a doubling in the amount of malabsorbed carbohydrate and a 55% increase in the malabsorbed protein. In normal subjects, high doses of lactulose (160 g/day) produce massive protein fecal losses of about 0.5 M/day, about 50% of the total protein intake,<sup>155</sup> presumably resulting from small-intestine protein malabsorption.

This lactulose-induced protein malabsorption is equivalent to a low-protein diet which as discussed earlier should decrease plasma urea and correspondingly the rate of  $\text{NH}_3$

production from bacterial urea hydrolysis. In addition, the increased small- and large-intestine volume flows and decreased transit time should limit the time for bacterial urea hydrolysis and protein deamination. Both of these effects should decrease the rate of urea metabolism. This was directly confirmed by Weber, who looked at the effect of lactulose (40–80 g/day) on urea metabolism in six CLD subjects.<sup>156</sup> As predicted, if lactulose decreased protein absorption, lactulose increased stool-nitrogen output by a factor of 2.3 and decreased plasma urea by 17% and net urea production by 25%. Most importantly, it decreased bacterial urea metabolism by 38%, which could account for much of the decrease in plasma  $\text{NH}_3$  associated with lactulose. Note that if colonic protein deamination was appreciable, the increased small-intestine protein malabsorption should have a deleterious effect, increasing colonic GI- $\text{NH}_3$  production. Since this is not observed, either protein deamination is not an important source of  $\text{NH}_3$  (in the presence or absence of lactulose) or the increased colonic transit time produced by lactulose limits the time for deamination.

These studies show that reducing bacterial urea metabolism by antibiotics or unabsorbable disaccharides reduces blood  $\text{NH}_3$  ( $C_{\text{Art}}$ ) by about 50%. One can use this quantitative model to predict the magnitude of inhibition of GI- $\text{NH}_3$  production ( $M_{\text{GI}}$ ) that would be required to produce this 50% fall in  $C_{\text{Art}}$ . The only change required is to make the substitution:

$$M_{\text{GI}} = (1 - f_{\text{GI}})M_{\text{GI}}^0 \quad (22)$$

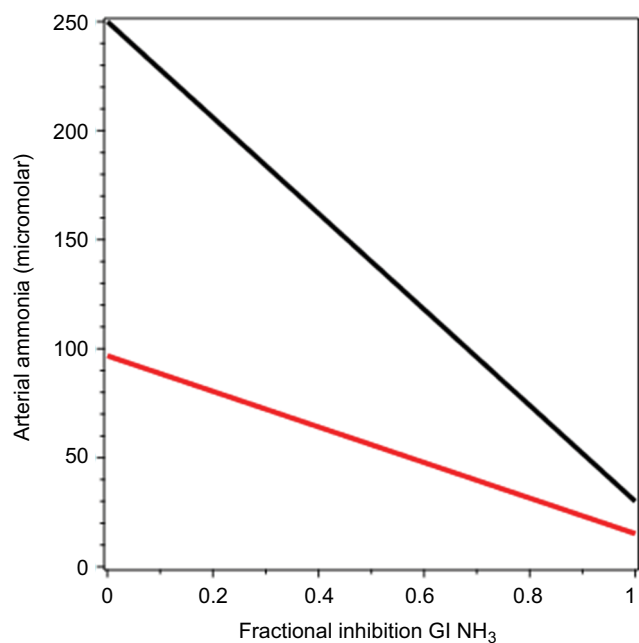
where  $f_{\text{GI}}$  is the fractional inhibition of GI- $\text{NH}_3$  production and  $M_{\text{GI}}^0$  the uninhibited rate (66  $\mu\text{M}/\text{min}/70 \text{ kg}$ ). Figure 7 shows a plot of  $C_{\text{Art}}$  as a function of  $f_{\text{GI}}$  for  $f_{\text{shunt}} = 1$  (black line) and  $f_{\text{shunt}} = 0.6$  (red line). It can be seen that in order to produce a 50% reduction in  $C_{\text{Art}}$ , it is necessary to reduce  $M_{\text{GI}}$  by about 60%. Antibiotics could account for such a reduction if these agents almost totally eliminated the bacterial metabolism of urea.

## Clinical implications

Discussion of the vast array of clinical conditions causing hyperammonemia and the use of  $\text{NH}_3$  measurements in the diagnosis and approach to therapy of these conditions is beyond the scope or goal of this paper. The following discussion provides a brief summary of selected aspects of the use of  $\text{NH}_3$  determinations in clinical practice.

The laboratory assessment of blood- $\text{NH}_3$  concentration is complicated by the large number of blood proteins (plasma and red blood cell-derived) that may “spontaneously”





**Figure 7** Arterial NH<sub>3</sub> concentration as a function of the fractional inhibition of GI-tract NH<sub>3</sub> production (eg, by oral antibiotics).

**Notes:** The black line represents 100% of portal blood shunted to the systemic veins. The red line represents 60% portosystemic shunt, which is the average value for chronic liver disease patients.

**Abbreviation:** GI, gastrointestinal.

deaminate, resulting in artifactual elevations of true blood-NH<sub>3</sub> concentration. For this reason, there was uncertainty that the blood of healthy subjects actually contained NH<sub>3</sub> until the 1960s, when analytical techniques requiring minimal blood manipulation became available. The most important factor in minimizing spurious elevations of blood NH<sub>3</sub> is maintenance of samples at ice-water temperature from collection to analysis, which should take place within 1 hour of sample collection. Care should also be taken when obtaining the venous blood sample, with minimal exercise of the arm and a short period of venous stasis. In addition, it has recently been shown that in patients with severe liver injury, deproteinization is required for accurate measurements using the glutamate dehydrogenase assay.<sup>157</sup> Despite apparent attention to these details, one laboratory found that of 86 pediatric patients with initially high blood NH<sub>3</sub> levels, subsequent values in about 50% normalized without treatment, suggesting that 50% of the initially elevated values were false positives.<sup>158</sup> It follows that the finding of elevated blood NH<sub>3</sub> requires confirmation with a repeat assay.

The clinical importance of hyperammonemia is its deleterious effect on the central nervous system with the induction of what is called HE. The most common manifestations of this problem are behavioral changes, confusion, somnolence

to coma, and motor disturbances.<sup>159</sup> Since such symptoms are commonly observed in the absence of hyperammonemia, the obvious purpose of measuring blood NH<sub>3</sub> is to determine if NH<sub>3</sub> is playing a pathogenic role in the encephalopathic patient. Subjects with hyperammonemia tend to segregate into two groups: those with known liver dysfunction, either cirrhosis with portal collaterals, or acute hepatic necrosis, and patients with unexplained central nervous system dysfunction but normal liver function. Given the high prevalence of cirrhosis, the vast majority of NH<sub>3</sub> measurements at our hospital are obtained from patients with known CLD, usually with extensive collateral circulation. It is commonly accepted that the encephalopathy manifested by these patients is a response to a wide variety of factors in addition to blood NH<sub>3</sub>, including hypokalemia, hyponatremia, infection, GI hemorrhage, altered neurotransmitter function, and drugs (that do not alter NH<sub>3</sub> homeostasis). While the degree of encephalopathy based on clinical assessment roughly correlates with the degree of hyperammonemia, the correlation coefficient (about 0.6) is poor.<sup>113</sup> Particularly problematic are patients who apparently demonstrate encephalopathy (usually mild) with a normal NH<sub>3</sub> level. While it is not clear to what extent the discrepancy between blood-NH<sub>3</sub> level and encephalopathy is a function of inaccurate clinical assessment of mental status, the present mantra is that the serum-NH<sub>3</sub> measurement adds little of value to simple bedside scoring systems for the severity of encephalopathy.

In contrast to the limited value of blood-NH<sub>3</sub> determinations in patients with CLD, this measurement is crucial to establishing hyperammonemia as the cause of encephalopathy in patients with normal liver-function tests. The vast majority of such patients have disorders of the urea cycle with severe defects manifesting in infancy, whereas minor defects may not become clinically apparent until some aggravating event occurs in adulthood, such as infection or a surgical procedure. A variety of drugs, including chemotherapeutic agents<sup>160</sup> and valproic acid,<sup>161</sup> have been observed to cause symptomatic elevations of blood NH<sub>3</sub>, apparently via interference with the urea cycle. Other conditions associated with hyperammonemia include urinary-tract infections with NH<sub>3</sub>-producing organisms<sup>162</sup> and bacterial overgrowth,<sup>163</sup> both presumably related to excessive production of NH<sub>3</sub>. Since hyperammonemia can result in irreversible brain injury or death if not treated, it is important to identify this problem as soon as possible in the course of the disease. It follows that serum-NH<sub>3</sub> determination should be obtained early in the workup of any patient with unexplained encephalopathy.

## Author contributions

Both authors contributed toward data analysis, drafting and revising the paper and agree to be accountable for all aspects of the work.

## Disclosure

The authors report no conflicts of interest in this work.

## References

- Hahn M, Massen O, Nencki M, Pawlow J. Die Eck'sche Fistel zwischen der unteren Hohlvene und der Pfortader und ihre Folgen für den Organismus. *Arch Exp Pathol Pharmacol*. 1893;32(3-4):161-210.
- Shawcross DL, Damink SW, Butterworth RF, Jalan R. Ammonia and hepatic encephalopathy: the more things change, the more they remain the same. *Metab Brain Dis*. 2005;20(3):169-179.
- Rose CF. Ammonia-lowering strategies for the treatment of hepatic encephalopathy. *Clin Pharmacol Ther*. 2012;92(3):321-331.
- Liere V, Sandhu G, DeMorrow S. Recent advances in hepatic encephalopathy. *F1000Res*. 2017;6:1637.
- McDermott WV Jr, Victor M, Point WW. Exclusion of the colon in the treatment of hepatic encephalopathy. *N Engl J Med*. 1962;267(17):850-854.
- McDermott WV Jr. Treatment of ammonia intoxication by exclusion of the colon. *Gastroenterology*. 1966;51(5):721-723.
- Gluud LL, Dam G, Borre M, et al. Lactulose, rifaximin or branched chain amino acids for hepatic encephalopathy: what is the evidence? *Metab Brain Dis*. 2013;28(2):221-225.
- Bates RG, Pinching GD. Acidic dissociation constant of ammonium ion at 0° to 50°C, and the base strength of ammonia. *J Res Natl Bur Stand (1977)*. 1949;42:419-430.
- Martinelle K, Häggström L. On the dissociation constant of ammonium: effects of using an incorrect  $pK_a$  in calculations of the ammonia concentration in animal cell cultures. *Biotechnol Tech*. 1997;11(12):549-551.
- Weiner ID, Hamm LL. Molecular mechanisms of renal ammonia transport. *Annu Rev Physiol*. 2007;69:317-340.
- Weiner ID, Verlander JW. Molecular physiology of the Rh ammonia transport proteins. *Curr Opin Nephrol Hypertens*. 2010;19(5):471-477.
- Weiner ID. New insights into the molecular regulation of urine concentration. *Am J Physiol Renal Physiol*. 2016;311(1):F184-F185.
- Bergen WG, Wu G. Intestinal nitrogen recycling and utilization in health and disease. *J Nutr*. 2009;139(5):821-825.
- Damink SW, Deutz NE, Dejong CH, Soeters PB, Jalan R. Interorgan ammonia metabolism in liver failure. *Neurochem Int*. 2002;41(2-3):177-188.
- Walker V. Ammonia metabolism and hyperammonemic disorders. *Adv Clin Chem*. 2014;67:73-150.
- Darmaun D, Matthews DE, Bier DM. Glutamine and glutamate kinetics in humans. *Am J Physiol*. 1986;251(1 Pt 1):E117-E126.
- McGale EH, Pye IF, Stonier C, Hutchinson EC, Aber GM. Studies of the inter-relationship between cerebrospinal fluid and plasma amino acid concentrations in normal individuals. *J Neurochem*. 1977;29(2):291-297.
- Cooper AJ, Freed BR. Metabolism of [ $^{13}$ N]ammonia in rat lung. *Neurochem Int*. 2005;47(1-2):103-118.
- Wright G, Noiret L, Damink SW, Jalan R. Interorgan ammonia metabolism in liver failure: the basis of current and future therapies. *Liver Int*. 2011;31(2):163-175.
- Hagenfeldt L, Eriksson S, Wahren J. Influence of leucine on arterial concentrations and regional exchange of amino acids in healthy subjects. *Clin Sci (Lond)*. 1980;59(3):173-181.
- Tizianello A, De Ferrari G, Garibotto G, Gurreri G. Effects of chronic renal insufficiency and metabolic acidosis on glutamine metabolism in man. *Clin Sci Mol Med*. 1978;55(4):391-397.
- Cooper AJ, Plum F. Biochemistry and physiology of brain ammonia. *Physiol Rev*. 1987;67(2):440-519.
- Meyer JS, Gotoh F, Akiyama M, Toshitake S. Monitoring cerebral blood flow and oxygen, glucose, lactate and ammonia metabolism. *Circ Res*. 1967;21(5):649-660.
- Rosenspire KC, Schwaiger M, Mangner TJ, Hutchins GD, Sutorik A, Kuhl DE. Metabolic fate of [ $^{13}$ N]ammonia in human and canine blood. *J Nucl Med*. 1990;31(2):163-167.
- Cole JT. Metabolism of BCAAs. In: Rajendram R, Rajkumar P, Patel V, editors. *Branched Chain Amino Acids in Clinical Nutrition*. Vol 2. Heidelberg: Springer; 2015:13-24.
- Guevara-Cruz M, Vargas-Morales JM, Mendez-Garcia AL, et al. Amino acid profiles of young adults differ by sex, body mass index and insulin resistance. *Nutr Metab Cardiovasc Dis*. 2018;28(4):393-401.
- van de Poll MC, Ligthart-Melis GC, Damink SW, et al. The gut does not contribute to systemic ammonia release in humans without portosystemic shunting. *Am J Physiol Gastrointest Liver Physiol*. 2008;295(4):G760-G765.
- Holeček M. Three targets of branched-chain amino acid supplementation in the treatment of liver disease. *Nutrition*. 2010;26(5):482-490.
- Holeček M. Branched-chain amino acids and ammonia metabolism in liver disease: therapeutic implications. *Nutrition*. 2013;29(10):1186-1191.
- Holeček M. Evidence of a vicious cycle in glutamine synthesis and breakdown in pathogenesis of hepatic encephalopathy: therapeutic perspectives. *Metab Brain Dis*. 2014;29(1):9-17.
- Holeček M. Branched-chain amino acid supplementation in treatment of liver cirrhosis: updated views on how to attenuate their harmful effects on cataplerosis and ammonia formation. *Nutrition*. 2017;41:80-85.
- Holeček M. Relation between glutamine, branched-chain amino acids, and protein metabolism. *Nutrition*. 2002;18(2):130-133.
- Fulgoni VL 3rd. Current protein intake in America: analysis of the National Health and Nutrition Examination Survey, 2003-2004. *Am J Clin Nutr*. 2008;87(5):1554S-1557S.
- Mariotti F, Tomé D, Mirand PP. Converting nitrogen into protein: beyond 6.25 and Jones' factors. *Crit Rev Food Sci Nutr*. 2008;48(2):177-184.
- Gersovitz M, Motil K, Munro HN, Scrimshaw NS, Young VR. Human protein requirements: assessment of the adequacy of the current recommended dietary allowance for dietary protein in elderly men and women. *Am J Clin Nutr*. 1982;35(1):6-14.
- Matthews DE, Campbell RG. The effect of dietary protein intake on glutamine and glutamate nitrogen metabolism in humans. *Am J Clin Nutr*. 1992;55(5):963-970.
- Rudman D, DiFulco TJ, Galambos JT, Smith RB 3rd, Salam AA, Warren WD. Maximal rates of excretion and synthesis of urea in normal and cirrhotic subjects. *J Clin Invest*. 1973;52(9):2241-2249.
- Jackson AA, Picou D, Landman J. The non-invasive measurement of urea kinetics in normal man by a constant infusion of  $^{15}N^{15}N$ -urea. *Hum Nutr Clin Nutr*. 1984;38(5):339-354.
- Walser M, Bodenlos LJ. Urea metabolism in man. *J Clin Invest*. 1959;38(9):1617-1626.
- Wrong OM, Vince A. Urea and ammonia metabolism in the human large intestine. *Proc Nutr Soc*. 1984;43(1):77-86.
- Levenson SM, Crowley LV, Horowitz RE, Malm OJ. The metabolism of carbon-labeled urea in the germ free rat. *J Biol Chem*. 1959;234(8):2061-2062.
- Nance FC, Kaufman HJ, Kline DG. Role of urea in the hyperammonemia of germ-free Eck fistula dogs. *Gastroenterology*. 1974;66(1):108-112.
- Levitt DG. PKQuest Java: free, interactive physiologically based pharmacokinetic software package and tutorial. *BMC Res Notes*. 2009;2:158.
- Gerich JE, Meyer C, Stumvoll MW. Hormonal control of renal and systemic glutamine metabolism. *J Nutr*. 2000;130(4S Suppl):995S-1001S.
- He Y, Hakvoort TB, Köhler SE, et al. Glutamine synthetase in muscle is required for glutamine production during fasting and extrahepatic ammonia detoxification. *J Biol Chem*. 2010;285(13):9516-9524.

46. Mittendorfer B, Volpi E, Wolfe RR. Whole body and skeletal muscle glutamine metabolism in healthy subjects. *Am J Physiol Endocrinol Metab.* 2001;280(2):E323–E333.
47. Nurjhan N, Bucci A, Perriello G, et al. Glutamine: a major gluconeogenic precursor and vehicle for interorgan carbon transport in man. *J Clin Invest.* 1995;95(1):272–277.
48. Damink SW, Jalan R, Redhead DN, Hayes PC, Deutz NE, Soeters PB. Interorgan ammonia and amino acid metabolism in metabolically stable patients with cirrhosis and a TIPSS. *Hepatology.* 2002;36(5):1163–1171.
49. Aledo JC, Gomez-Fabre PM, Olalla L, Marquez J. Identification of two human glutaminase loci and tissue-specific expression of the two related genes. *Mamm Genome.* 2000;11(12):1107–1110.
50. Lowenstein JM. Ammonia production in muscle and other tissues: the purine nucleotide cycle. *Physiol Rev.* 1972;52(2):382–414.
51. Haussinger D. Nitrogen metabolism in liver: structural and functional organization and physiological relevance. *Biochem J.* 1990;267(2):281–290.
52. Vela CI, Padilla FJ. Determination of ammonia concentrations in cirrhosis patients: still confusing after all these years? *Ann Hepatol.* 2011;10(Suppl 2):S60–S65.
53. Walker MC, Hill RC, Guilford WG, Scott KC, Jones GL, Buerge CD. Postprandial venous ammonia concentrations in the diagnosis of hepatobiliary disease in dogs. *J Vet Intern Med.* 2001;15(5):463–466.
54. Windmueller HG, Spaeth AE. Uptake and metabolism of plasma glutamine by the small intestine. *J Biol Chem.* 1974;249(16):5070–5079.
55. Gebhardt R, Ebert A, Bauer G. Heterogeneous expression of glutamine synthetase mRNA in rat liver parenchyma revealed by in situ hybridization and Northern blot analysis of RNA from periportal and perivenous hepatocytes. *FEBS Lett.* 1988;241(1–2):89–93.
56. Hakvoort TB, He Y, Kulik W, et al. Pivotal role of glutamine synthetase in ammonia detoxification. *Hepatology.* 2017;65(1):281–293.
57. Keiding S, Munk OL, Roelsgaard K, Bender D, Bass L. Positron emission tomography of hepatic first-pass metabolism of ammonia in pig. *Eur J Nucl Med.* 2001;28(12):1770–1775.
58. Deutz NE, Reijven PL, Athanasas G, Soeters PB. Post-operative changes in hepatic, intestinal, splenic and muscle fluxes of amino acids and ammonia in pigs. *Clin Sci (Lond).* 1992;83(5):607–614.
59. Wolpert E, Phillips SF, Summerskill WH. Ammonia production in the human colon: effects of cleansing, neomycin and acetohydroxamic acid. *N Engl J Med.* 1970;283(4):159–164.
60. Nevah MI, Fallon MB. Hepatic encephalopathy, hepatorenal syndrome, hepatopulmonary syndrome and systemic complications of liver disease. In: Feldman M, Friedman LS, Brandt LJ, editors. *Sleisenger and Fordtran's Gastrointestinal and Liver Diseases: Pathophysiology/Diagnosis/Management.* 10th ed. Philadelphia, PA: Saunders; 2016:1577–1590.
61. Magasanik B. The regulation of nitrogen utilization in enteric bacteria. *J Cell Biochem.* 1993;51(1):34–40.
62. Miner-Williams W, Deglaire A, Benamouzig R, Fuller MF, Tome D, Moughan PJ. Endogenous proteins in terminal ileal digesta of adult subjects fed a casein-based diet. *Am J Clin Nutr.* 2012;96(3):508–515.
63. Gibson JA, Sladen GE, Dawson AM. Protein absorption and ammonia production: the effects of dietary protein and removal of the colon. *Br J Nutr.* 1976;35(1):61–65.
64. Cersosimo E, Williams PE, Radosevich PM, Hoxworth BT, Lacy WW, Abumrad NN. Role of glutamine in adaptations in nitrogen metabolism during fasting. *Am J Physiol.* 1986;250(6 Pt 1):E622–E628.
65. Souba WW, Klimberg VS, Plumley DA, et al. The role of glutamine in maintaining a healthy gut and supporting the metabolic response to injury and infection. *J Surg Res.* 1990;48(4):383–391.
66. Wolpert E, Phillips SF, Summerskill WH. Transport of urea and ammonia production in the human colon. *Lancet.* 1971;2(7739):1387–1390.
67. Billich CO, Levitan R. Effects of sodium concentration and osmolality on water and electrolyte absorption from the intact human colon. *J Clin Invest.* 1969;48(7):1336–1347.
68. Fordtran JS, Rector FC Jr, Ewton MF, Soter N, Kinney J. Permeability characteristics of the human small intestine. *J Clin Invest.* 1965;44(12):1935–1944.
69. Loehry CA, Axon AT, Hilton PJ, Hider RC, Creamer B. Permeability of the small intestine to substances of different molecular weight. *Gut.* 1970;11(6):466–470.
70. Ewe K, Summerskill WH. Transfer of ammonia in the human jejunum. *J Lab Clin Med.* 1965;65:839–847.
71. Gibson JA, Park NJ, Sladen GE, Dawson AM. The role of the colon in urea metabolism in man. *Clin Sci Mol Med.* 1976;50(1):51–59.
72. Wilson DR, Ing TS, Metcalfe-Gibson A, Wrong OM. The chemical composition of faeces in uraemia, as revealed by in-vivo faecal dialysis. *Clin Sci.* 1968;35(2):197–209.
73. Hill MJ, Drasar BS. The normal colonic bacterial flora. *Gut.* 1975;16(4):318–323.
74. Walser M. Urea metabolism in chronic renal failure. *J Clin Invest.* 1974;53(5):1385–1392.
75. Davies S, Spanel P, Smith D. Quantitative analysis of ammonia on the breath of patients in end-stage renal failure. *Kidney Int.* 1997;52(1):223–228.
76. Wrong OM, Vince AJ, Waterlow JC. The contribution of endogenous urea to faecal ammonia in man, determined by <sup>15</sup>N labelling of plasma urea. *Clin Sci (Lond).* 1985;68(2):193–199.
77. Mobley HL, Cortesia MJ, Rosenthal LE, Jones BD. Characterization of urease from *Campylobacter pylori*. *J Clin Microbiol.* 1988;26(5):831–836.
78. Evans WB, Aoyagi T, Summerskill WH. Gastrointestinal urease in man – II: urea hydrolysis and ammonia absorption in upper and lower gut lumen and the effect of neomycin. *Gut.* 1966;7(6):635–639.
79. Chen SJ, Wang LJ, Zhu Q, Cai JT, Chen T, Si JM. Effect of *H. pylori* infection and its eradication on hyperammonemia and hepatic encephalopathy in cirrhotic patients. *World J Gastroenterol.* 2008;14(12):1914–1918.
80. Chakrabarti P, Zullo A, Hassan C, et al. *Helicobacter pylori*, gastric juice, and arterial ammonia levels in patients with cirrhosis. *J Clin Gastroenterol.* 2002;34(5):578–581.
81. Zullo A, Hassan C, Morini S. Hepatic encephalopathy and *Helicobacter pylori*: a critical reappraisal. *J Clin Gastroenterol.* 2003;37(2):164–168.
82. Jiang HX, Qin SY, Min ZG, et al. Association of *Helicobacter pylori* with elevated blood ammonia levels in cirrhotic patients: a meta-analysis. *Yonsei Med J.* 2013;54(4):832–838.
83. Neithercut WD, Greig MA, Hossack M, McColl KE. Suicidal destruction of *Helicobacter pylori*: metabolic consequence of intracellular accumulation of ammonia. *J Clin Pathol.* 1991;44(5):380–384.
84. Aoyagi T, Engstrom GW, Evans WB, Summerskill WH. Gastrointestinal urease in man – I: activity of mucosal urease. *Gut.* 1966;7(6):631–635.
85. Suzuki K, Benno Y, Mitsuoka T, Takebe S, Kobashi K, Hase J. Urease-producing species of intestinal anaerobes and their activities. *Appl Environ Microbiol.* 1979;37(3):379–382.
86. Butt NI, Butt UI, Kakar A, Malik T, Siddiqui AM. Is lactulose plus rifaximin better than lactulose alone in the management of hepatic encephalopathy? *J Coll Physicians Surg Pak.* 2018;28(2):115–117.
87. Shawcross DL. Diagnosis and management of hepatic encephalopathy. *Br J Nurs.* 2018;27(Suppl 3):S7–S13.
88. van Berlo CL, van Leeuwen PA, Soeters PB. Porcine intestinal ammonia liberation: influence of food intake, lactulose and neomycin treatment. *J Hepatol.* 1988;7(2):250–257.
89. van der Hulst RR, von Meyenfeldt MF, Deutz NE, Soeters PB. Glutamine extraction by the gut is reduced in depleted [corrected] patients with gastrointestinal cancer. *Ann Surg.* 1997;225(1):112–121.
90. Delaney JP, Custer J. Gastrointestinal blood flow in the dog. *Circ Res.* 1965;17(5):394–402.
91. Frassetto LA, Todd KM, Morris RC Jr, Sebastian A. Estimation of net endogenous noncarbonic acid production in humans from diet potassium and protein contents. *Am J Clin Nutr.* 1998;68(3):576–583.
92. Koeppen BM. The kidney and acid-base regulation. *Adv Physiol Educ.* 2009;33(4):275–281.

93. Weiner ID, Mitch WE, Sands JM. Urea and ammonia metabolism and the control of renal nitrogen excretion. *Clin J Am Soc Nephrol*. 2015;10(8):1444–1458.
94. Stumvoll M, Perriello G, Meyer C, Gerich J. Role of glutamine in human carbohydrate metabolism in kidney and other tissues. *Kidney Int*. 1999;55(3):778–792.
95. Pitts RF, Stone WJ. Renal metabolism of alanine. *J Clin Invest*. 1967;46(4):530–538.
96. Owen EE, Robinson RR. Amino acid extraction and ammonia metabolism by the human kidney during the prolonged administration of ammonium chloride. *J Clin Invest*. 1963;42(2):263–276.
97. Felig P. Amino acid metabolism in man. *Annu Rev Biochem*. 1975;44:933–955.
98. Katz A, Broberg S, Sahlin K, Wahren J. Muscle ammonia and amino acid metabolism during dynamic exercise in man. *Clin Physiol*. 1986;6(4):365–379.
99. Deuel TF, Louie M, Lerner A. Glutamine synthetase from rat liver: purification, properties, and preparation of specific antisera. *J Biol Chem*. 1978;253(17):6111–6118.
100. Chang TW, Goldberg AL. The metabolic fates of amino acids and the formation of glutamine in skeletal muscle. *J Biol Chem*. 1978;253(10):3685–3693.
101. Bessman SP, Bradley JE. Uptake of ammonia by muscle; its implications in ammoniogenic coma. *N Engl J Med*. 1955;253(26):1143–1147.
102. Damink SW, Dejong CH, Deutz NE, et al. Kidney plays a major role in ammonia homeostasis after portosystemic shunting in patients with cirrhosis. *Am J Physiol Gastrointest Liver Physiol*. 2006;291(2):G189–G194.
103. Clemmesen JO, Kondrup J, Ott P. Splanchnic and leg exchange of amino acids and ammonia in acute liver failure. *Gastroenterology*. 2000;118(6):1131–1139.
104. Roman E, Garcia-Galceran C, Torrades T, et al. Effects of an exercise programme on functional capacity, body composition and risk of falls in patients with cirrhosis: a randomized clinical trial. *PLoS One*. 2016;11(3):e0151652.
105. Holeček M, Kandar R, Sispara L, Kovarik M. Acute hyperammonemia activates branched-chain amino acid catabolism and decreases their extracellular concentrations: different sensitivity of red and white muscle. *Amino Acids*. 2011;40(2):575–584.
106. Graham TE, Turcotte LP, Kiens B, Richter EA. Training and muscle ammonia and amino acid metabolism in humans during prolonged exercise. *J Appl Physiol* (1985). 1995;78(2):725–735.
107. Court FG, Laws PE, Morrison CP, et al. Subtotal hepatectomy: a porcine model for the study of liver regeneration. *J Surg Res*. 2004;116(1):181–186.
108. Benhamouche S, Decaens T, Godard C, et al. Apc tumor suppressor gene is the “zonation-keeper” of mouse liver. *Dev Cell*. 2006;10(6):759–770.
109. Pond SM, Tozer TN. First-pass elimination: basic concepts and clinical consequences. *Clin Pharmacokinet*. 1984;9(1):1–25.
110. Nomura F, Ohnishi K, Terabayashi H, et al. Effect of intrahepatic portal-systemic shunting on hepatic ammonia extraction in patients with cirrhosis. *Hepatology*. 1994;20(6):1478–1481.
111. McDermott WV, Adams RD, Riddell AG. Ammonia metabolism in man. *Ann Surg*. 1954;140(4):539–556.
112. Tarantino G, Citro V, Esposito P, et al. Blood ammonia levels in liver cirrhosis: a clue for the presence of portosystemic collateral veins. *BMC Gastroenterol*. 2009;9:21.
113. Ong JP, Aggarwal A, Krieger D, et al. Correlation between ammonia levels and the severity of hepatic encephalopathy. *Am J Med*. 2003;114(3):188–193.
114. Starzl TE, Porter KA, Francavilla A. The Eck fistula in animals and humans. *Curr Probl Surg*. 1983;20(11):687–752.
115. Eck NV. K voprosu o perevyazkie vorotnois veni: predvaritelnoye soobschjenye *Voen Med Zh*. 1877;130:1–2.
116. Davidson CS. Hepatic coma. *Adv Intern Med*. 1955;7:33–63.
117. Fisher CJ, Faloan WW. Blood ammonia levels in hepatic cirrhosis: their control by the oral administration of neomycin. *N Engl J Med*. 1957;256(22):1030–1035.
118. Silen W, Mawdsley DL, Weirich WL, Harper HA. Studies of hepatic function in dogs with Eck fistula or portacaval transposition. *AMA Arch Surg*. 1957;74(6):964–970.
119. Kline DG, Crook JN, Nance FC. Eck fistula encephalopathy: long-term studies in primates. *Ann Surg*. 1971;173(1):97–103.
120. Moreno AH, Burchell AR, Rousselot LM, Panke WF, Slafsky F, Burke JH. Portal blood flow in cirrhosis of the liver. *J Clin Invest*. 1967;46(3):436–445.
121. Groszmann R, Kotlanski B, Cohn JN, Khatri IM. Quantitation of portosystemic shunting from the splenic and mesenteric beds in alcoholic liver disease. *Am J Med*. 1972;53(6):715–722.
122. Gülberg V, Haag K, Rössle M, Gerbes AL. Hepatic arterial buffer response in patients with advanced cirrhosis. *Hepatology*. 2002;35(3):630–634.
123. Noiret L, Baigent S, Jalan R. Arterial ammonia levels in cirrhosis are determined by systemic and hepatic hemodynamics, and by organ function: a quantitative modelling study. *Liver Int*. 2014;34(6):e45–e55.
124. Eipel C, Abshagen K, Vollmar B. Regulation of hepatic blood flow: the hepatic arterial buffer response revisited. *World J Gastroenterol*. 2010;16(48):6046–6057.
125. Iwao T, Toyonaga A, Shigemori H, et al. Hepatic artery hemodynamic responsiveness to altered portal blood flow in normal and cirrhotic livers. *Radiology*. 1996;200(3):793–798.
126. Schenk WG Jr, McDonald JC, McDonald K, Drapanas T. Direct measurement of hepatic blood flow in surgical patients: with related observations on hepatic flow dynamics in experimental animals. *Ann Surg*. 1962;156:463–471.
127. Burchell AR, Moreno AH, Panke WF, Nealon TF Jr. Hepatic artery flow improvement after portacaval shunt: a single hemodynamic clinical correlate. *Ann Surg*. 1976;184(3):289–302.
128. Walser EM, Harris VM, Harman JT, Park HM, Siddiqui AR. Quantification of intrahepatic portosystemic shunting after placement of a transjugular intrahepatic portosystemic shunt. *J Vasc Interv Radiol*. 1996;7(2):263–267.
129. Chalmers TC, Hughes CW, Iber FL. Nitrogen metabolism after portacaval shunts in patients with cirrhosis – I: effects of the operation upon the blood ammonia concentration. *AMA Arch Intern Med*. 1958;101(2):434–438.
130. Richter GM, Brado M, Simon C, et al. [Changes in liver perfusion caused by transjugular intrahepatic stent shunt (TIPSS)]. *Zentralbl Chir*. 1997;122(2):108–116. German.
131. Weidekamm C, Cejna M, Kramer L, Peck-Radosavljevic M, Bader TR. Effects of TIPS on liver perfusion measured by dynamic CT. *AJR Am J Roentgenol*. 2005;184(2):505–510.
132. Damink SW, Jalan R, Deutz NE, et al. The kidney plays a major role in the hyperammonemia seen after simulated or actual GI bleeding in patients with cirrhosis. *Hepatology*. 2003;37(6):1277–1285.
133. Mew NA, Simpson KL, Gropman AL, Lanpher BC, Chapman KA, Summar ML. Urea cycle disorders overview. 1993. Available from: <https://www.ncbi.nlm.nih.gov/pubmed/20301396>. Accessed April 3, 2018.
134. Summar M, Tuchman M. Proceedings of a consensus conference for the management of patients with urea cycle disorders. *J Pediatr*. 2001;138(1 Suppl):S6–S10.
135. Ali EZ, Khalid MK, Yunus ZM, et al. Carbamoylphosphate synthetase 1 (CPS1) deficiency: clinical, biochemical, and molecular characterization in Malaysian patients. *Eur J Pediatr*. 2016;175(3):339–346.
136. Picou D, Phillips M. Urea metabolism in malnourished and recovered children receiving a high or low protein diet. *Am J Clin Nutr*. 1972;25(11):1261–1266.
137. Young VR, El-Khoury AE, Raguso CA, Forslund AH, Hambraeus L. Rates of urea production and hydrolysis and leucine oxidation change linearly over widely varying protein intakes in healthy adults. *J Nutr*. 2000;130(4):761–766.



138. Cordoba J, Lopez-Hellin J, Planas M, et al. Normal protein diet for episodic hepatic encephalopathy: results of a randomized study. *J Hepatol*. 2004;41(1):38–43.
139. Plauth M, Merli M, Kondrup J. Management of hepatic encephalopathy. *N Engl J Med*. 1997;337(26):1921–1922.
140. Cabral CM, Burns DL. Low-protein diets for hepatic encephalopathy debunked: let them eat steak. *Nutr Clin Pract*. 2011;26(2):155–159.
141. Oria M, Romero-Gimenez J, Arranz JA, Riudor E, Raguer N, Cordoba J. Ornithine phenylacetate prevents disturbances of motor-evoked potentials induced by intestinal blood in rats with portacaval anastomosis. *J Hepatol*. 2012;56(1):109–114.
142. Bessman AN, Mirick GS. Blood ammonia levels following the ingestion of casein and whole blood. *J Clin Invest*. 1958;37(7):990–998.
143. Mas A, Rodes J, Sunyer L, et al. Comparison of rifaximin and lactitol in the treatment of acute hepatic encephalopathy: results of a randomized, double-blind, double-dummy, controlled clinical trial. *J Hepatol*. 2003;38(1):51–58.
144. Miglio F, Valpiani D, Rossellini SR, Ferrieri A. Rifaximin, a non-absorbable rifamycin, for the treatment of hepatic encephalopathy: a double-blind, randomised trial. *Curr Med Res Opin*. 1997;13(10):593–601.
145. Paik YH, Lee KS, Han KH, et al. Comparison of rifaximin and lactulose for the treatment of hepatic encephalopathy: a prospective randomized study. *Yonsei Med J*. 2005;46(3):399–407.
146. Pedretti G, Calzetti C, Missale G, Fiaccadori F. Rifaximin versus neomycin on hyperammonemia in chronic portal systemic encephalopathy of cirrhotics: a double-blind, randomized trial. *Ital J Gastroenterol*. 1991;23(4):175–178.
147. Bircher J, Müller J, Guggenheim P, Haemmerli UP. Treatment of chronic portal-systemic encephalopathy with lactulose. *Lancet*. 1966;1(7443):890–892.
148. Wu D, Wu SM, Lu J, Zhou YQ, Xu L, Guo CY. Rifaximin versus non-absorbable disaccharides for the treatment of hepatic encephalopathy: a meta-analysis. *Gastroenterol Res Pract*. 2013;2013:236963.
149. Clausen MR, Mortensen PB. Lactulose, disaccharides and colonic flora: clinical consequences. *Drugs*. 1997;53(6):930–942.
150. Agostini L, Down PF, Murison J, Wrong OM. Faecal ammonia and pH during lactulose administration in man: comparison with other cathartics. *Gut*. 1972;13(11):859–866.
151. Zeegen R, Drinkwater JE, Fenton JC, Vince A, Dawson AM. Some observations on the effects of treatment with lactulose on patients with chronic hepatic encephalopathy. *Q J Med*. 1970;39(154):245–263.
152. Vince A, Killingley M, Wrong OM. Effect of lactulose on ammonia production in a fecal incubation system. *Gastroenterology*. 1978;74(3):544–549.
153. Read NW, Cammack J, Edwards C, Holgate AM, Cann PA, Brown C. Is the transit time of a meal through the small intestine related to the rate at which it leaves the stomach? *Gut*. 1982;23(10):824–828.
154. Holgate AM, Read NW. Relationship between small bowel transit time and absorption of a solid meal. Influence of metoclopramide, magnesium sulfate, and lactulose. *Dig Dis Sci*. 1983;28(9):812–819.
155. Mortensen PB. The effect of oral-administered lactulose on colonic nitrogen metabolism and excretion. *Hepatology*. 1992;16(6):1350–1356.
156. Weber FL Jr. The effect of lactulose on urea metabolism and nitrogen excretion in cirrhotic patients. *Gastroenterology*. 1979;77(3):518–523.
157. Vodenicarova M, Skalska H, Holeček M. Deproteinization is necessary for the accurate determination of ammonia levels by glutamate dehydrogenase assay in blood plasma from subjects with liver injury. *Lab Med*. 2017;48(4):339–345.
158. Maranda B, Cousineau J, Allard P, Lambert M. False positives in plasma ammonia measurement and their clinical impact in a pediatric population. *Clin Biochem*. 2007;40(8):531–535.
159. Butterworth RF. Pathogenesis of hepatic encephalopathy: new insights from neuroimaging and molecular studies. *J Hepatol*. 2003;39(2):278–285.
160. Nott L, Price TJ, Pittman K, Patterson K, Fletcher J. Hyperammonemia encephalopathy: an important cause of neurological deterioration following chemotherapy. *Leuk Lymphoma*. 2007;48(9):1702–1711.
161. Segura-Bruna N, Rodriguez-Campello A, Puente V, Roquer J. Valproate-induced hyperammonemic encephalopathy. *Acta Neurol Scand*. 2006;114(1):1–7.
162. Albersen M, Joniau S, van Poppel H, Cuyle PJ, Knockaert DC, Meersseman W. Urea-splitting urinary tract infection contributing to hyperammonemic encephalopathy. *Nat Clin Pract Urol*. 2007;4(8):455–458.
163. Gupta A, Dhiman RK, Kumari S, et al. Role of small intestinal bacterial overgrowth and delayed gastrointestinal transit time in cirrhotic patients with minimal hepatic encephalopathy. *J Hepatol*. 2010;53(5):849–855.
164. Tizianello A, De Ferrari G, Garibotto G, Gurreri G. Effects of chronic renal insufficiency and metabolic acidosis on glutamine metabolism in man. *Clin Sci Mol Med*. 1978;55(4):391–397.

## Clinical and Experimental Gastroenterology

### Publish your work in this journal

Clinical and Experimental Gastroenterology is an international, peer-reviewed, open access, online journal publishing original research, reports, editorials, reviews and commentaries on all aspects of gastroenterology in the clinic and laboratory. This journal is included on PubMed. The manuscript management system is completely online

Submit your manuscript here: <https://www.dovepress.com/clinical-and-experimental-gastroenterology-journal>

**Dovepress**

and includes a very quick and fair peer-review system, which is all easy to use. Visit <http://www.dovepress.com/testimonials.php> to read real quotes from published authors.