

# Multidisciplinary team approach in the management of popliteal artery injury

Neal Cooper<sup>1</sup>  
 Mazen Roshdy<sup>1</sup>  
 Jason D Sciarretta<sup>1</sup>  
 Christoph Kaufmann<sup>1</sup>  
 Scott Duncan<sup>1</sup>  
 John Davis<sup>1</sup>  
 Francisco Igor Macedo<sup>2</sup>

<sup>1</sup>Department of Surgery, Grand Strand Health, Myrtle Beach, SC, USA; <sup>2</sup>Dewitt-Daughtry Department of Surgery, Sylvester Comprehensive Cancer Center, University of Miami Miller School of Medicine, Miami, FL, USA

**Abstract:** Popliteal artery injuries (PAIs) remain a challenging entity and carry the greatest risk of limb loss among traumatic lower extremity vascular injuries. Operative management of traumatic popliteal vascular injuries continues to evolve. Improved diagnostic imaging and the introduction of endovascular techniques offered alternative modalities to traditional surgical management. Despite major efforts in establishing protocols and guidelines in the management of vascular trauma, optimal strategies of traumatic PAIs are still under investigation. Herein, we discussed the role of multidisciplinary team, involving trauma and endovascular surgeons, emergency department personnel, and interventional radiologists in the management of complex PAIs.

**Keywords:** multidisciplinary, popliteal artery injury, trauma

## Introduction

Extremity vascular injuries account for ~5% of all major traumas encountered in urban trauma centers.<sup>1</sup> The overwhelming majority of these injuries are secondary to penetrating trauma. Popliteal artery injuries (PAIs), in particular, remain uncommon, accounting for 0.2% of all traumas, but are potentially devastating injuries with a relatively high morbidity.<sup>1</sup> Experience in both the military and civilian settings have remarkably improved the surgical technique and perioperative management of these lesions. Optimal outcomes can be achieved with prompt diagnosis, expedited surgical management, and coordinated multidisciplinary care.

A stepwise multidisciplinary team (MDT) clinical pathway to traumatic injuries is associated with improved morbidity and decreased in-hospital mortality.<sup>2-4</sup> An organized approach is of paramount importance in the expedited delivery of care between the trauma team leader and the nursing staff and subspecialties, such as interventional radiology, orthopedics, anesthesiology, emergency department personnel, and vascular surgeons.<sup>5</sup> Despite major efforts in establishing protocols and guidelines in the management of vascular trauma, optimal strategies of traumatic PAIs are still under investigation.<sup>6</sup> We aim to discuss the complex care of PAIs and the role of an MDT approach in the management of these potentially morbid injuries.

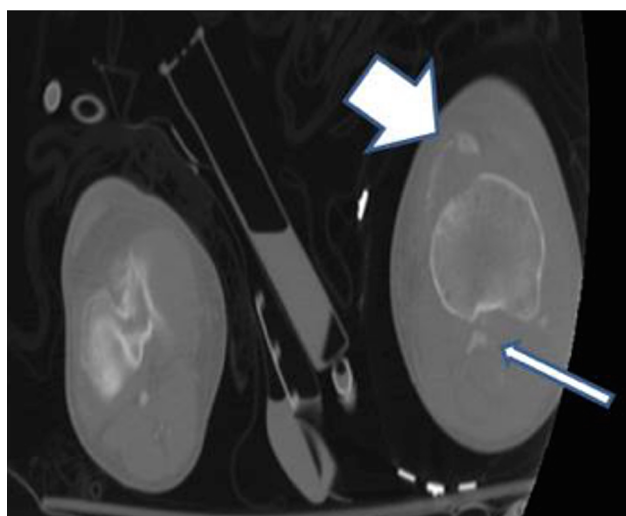
## Incidence and mechanism of injury

The incidence of PAIs is well documented in the civilian trauma literature but remains uncommon even in busy urban trauma centers, only accounting for 0.2% of all traumas and an overall incidence of 5% among all vascular injuries.<sup>1,7,8</sup> PAI in particular has been reported as 35%–70% of all infrainguinal arterial injuries.<sup>9,10-13</sup>

Correspondence: Jason D Sciarretta  
 Department of Surgery, Grand Strand Health 849 82nd Parkway, Myrtle Beach, SC 29572, USA  
 Tel +1 843 692 1595  
 Fax +1 843 692 1122  
 Email jdscia@hotmail.com

Major blunt trauma is associated with the transmission of force to the lower extremity that can lead to vascular, bone, nerve, and soft tissue injury.<sup>13,14</sup> PAIs are associated with high-energy impact injuries due to blunt mechanisms, resulting in potential debilitating orthopedic injuries as seen with posterior knee dislocations, complex tibial plateau fractures, or supracondylar femur fractures<sup>1,14</sup> (Figure 1). The floor of the popliteal fossa is formed by the knee joint's capsule, popliteal surface of the femur, and the fascia of the popliteus muscle. In this location, the popliteal artery becomes most susceptible to injury, especially because of osseous injuries, such as complex fractures or dislocations<sup>1,13,14</sup> (Figure 2). Neurovascular examination including ankle-brachial index (ABI) should be assessed before and after reduction of osseous fractures.

Major orthopedic injuries are usually secondary to blunt trauma including traction-type injuries, avulsions, or transections of the popliteal artery from the adjacent bone fragments.<sup>13,14</sup> The injuries are associated with increased hospital and intensive care unit length of stay.<sup>13</sup> These injuries require expedited multidisciplinary management usually led by a trauma surgeon to increase overall limb salvage. A review by Sciarretta et al<sup>1,13</sup> showed the overall contributing factors to limb loss included nerve injury and compound fractures. Surgeons with limited experience with vascular traumatic injuries should consult a senior vascular surgeon. Cases with significant soft tissue loss, orthopedic and neurovascular compromise require a stepwise MDT approach to improve limb salvage rates by surgical specialists including orthopedics, plastic surgeons, and neurosurgeons.



**Figure 1** Tibia plateau fracture with active extravasation from the left popliteal artery.

**Notes:** Tibia plateau fracture (thick arrow) with active extravasation from the left popliteal artery (thin arrow).



**Figure 2** A complex left open partial amputation of the lower thigh following a motor vehicle collision and ejection.

## Diagnosis and clinical presentation

Early recognition of lower limb vascular injuries can improve overall patient outcomes. Immediate engagement of the trauma team is essential for early resuscitation and prevention of existing exsanguination. Hard signs of vascular injury, including hemorrhage, expanding hematomas, pulsatile bleeding, presence of bruits or thrills, and signs of distal ischemia, require immediate surgical intervention<sup>1,13,15</sup> (Table 1). Diagnostic procedures are frequently unnecessary and lead to delay in definitive care. Additional information may be obtained intraoperatively through the use of Doppler, Duplex ultrasound, or angiography as necessary. Evidence of cyanosis, neurological deficit, and temperature change are reliable findings predictive of vascular compromise.<sup>1,15</sup>

Injury to the popliteal artery can occur in the form of transection, occlusion, intimal injury, pseudoaneurysm, or fistula formation (Figure 3).<sup>16,17</sup> Initial evaluation requires a thorough vascular exam. A comprehensive neuromuscular

**Table 1** Clinical features of vascular injury

Hard signs	Soft signs
Rapid external hemorrhage	History of arterial bleeding
Expanding or pulsatile hematoma	Proximity of wound/blunt injury to a named artery
Signs of distal ischemia	Nonpulsatile hematoma
Thrill/bruit	Neurologic deficit
Absent pulses	

**Figure 3** A left posterior knee dislocation resulting in an intimal flap of the popliteal artery (arrow).

assessment should be completed by physical exam, ABI, and Doppler exam and Duplex ultrasound. If an abnormal pulse exam or ABI of  $<0.9$  is present, additional radiographic imaging should be undertaken. Radiographic imaging with either computed tomography (CT) angiography (CTA) or formal angiography is readily available in most trauma centers (Figure 3). Conventional angiography, classically described as the “gold standard” for vascular evaluation, has largely been supplanted by CTA because of longer acquisition time and resource burden associated with subtraction angiography. However, the presence of significant shrapnel or foreign debris may obscure CT imaging by artifact scatter.<sup>17</sup>

There are institutional differences in the approach to the diagnosis and management of a PAI causing limb compromise. Institutional-driven protocols and MDTs expedite the management of suspected PAI to improve outcomes.<sup>18</sup> The orthopedic group at Case Western demonstrated in a series of 105 patients that the presence of palpable dorsalis pedis and posterior tibial artery pulses with an ABI  $>0.9$  had a 100%

negative predictive value. Likewise, they demonstrated a 99% predictive value for vascular injury with an abnormal ABI.<sup>19</sup> In the anatomically aligned knee with an intact distal neurovascular exam, angiography can be safely excluded.<sup>16,20</sup>

Early involvement of orthopedic and vascular surgeons to ensure that any vascular repair will be preserved during definitive fixation through placement of external fixators to maintain length and by providing insight into their future operative fields allows proper placement of bypasses and incisions. Early physical therapy, occupational therapy, prostheses, case management, and other team members have been previously demonstrated to improve length of stay and patient outcomes.<sup>21</sup>

## Management

Historically, PAIs have been approached surgically in the operating room suite. Surgical literature and vascular experience may dictate treatment plans with nonocclusive PAIs. Clinically occult injuries commonly have a benign natural history and can be safely observed but with serial vascular exam.<sup>11,22</sup> The MDT approach with complex injuries require coordinated efforts to expedite surgical treatment. Specialty consultations may include interventional radiology or an endovascular specialist for potential minimally invasive therapy and orthopedic surgery for early stabilization and assessment of limb viability.

The orthopedic surgical team may perform open reduction and internal fixation (ORIF) of the femur to provide proper extremity alignment following vascular repair; however, we recommend restoration of blood flow prior to ORIF by temporary placement of a vascular shunt. Upon completion of ORIF, the temporary shunt may be removed and the popliteal artery can be repaired with a tension-free interposition graft. Posterior knee dislocation or “floating knees” may benefit by an interposition graft prior to any orthopedic procedures. MDT goal requires the utilization of external fixators to immobilize the knee and future ORIF when clinically improved. Occasionally, extra-anatomic bypass can provide restoration of flow if trying to avoid infected wounds or when extensive soft tissue loss is present.

Endovascular surgeons and interventional radiologists have approached PAIs selectively with successful outcomes. The literature supporting endovascular repair for lower extremity vascular injuries remains sparse and accounts for 5.9% of all treated acute peripheral arterial injuries.<sup>23</sup> Contraindications to endovascular approach include active external bleeding, expanding hematoma, exposed artery, suspicion of complete vessel transection, time to repair  $>6$  hours, and

inadequate imaging equipment.<sup>13,24,25</sup> Challenges are met with the endovascular approach to partial transections but can be considered in selected candidates who are hemodynamically stable and without the presence of hard signs.<sup>13,24</sup>

## Our experience

During a 6-year period, 78 traumatic vascular injuries to the popliteal vessels were analyzed: 51 (65.4%) popliteal arteries and 22 (28.2%) popliteal veins and 5 other concurrent lower extremity vessel injuries.<sup>13</sup> Twenty patients presented with combined popliteal arterial and venous injuries. Twenty-one patients sustained penetrating injury (19 gunshot and 2 stab wounds) 26 patients suffered blunt trauma. Concomitant injuries included bone fractures (68%), nerve injuries (8.5%), and soft tissue loss requiring muscle flaps (10.6%).

Eighteen patients (37.5%) underwent preoperative CTA. Radiographic findings included partial or total popliteal artery occlusion (50%), active extravasation (27.8%), pseudoaneurysm (5.5%), and intimal flaps (16.7%).

Patients presenting with hard signs were immediately taken to the operating room for vascular repair. In majority of cases (70.7%), reverse saphenous interposition grafting was used. Two patients (3.9%) received polytetrafluoroethylene grafting due to unsuitable autogenous grafting. Only 10.6% of patients received temporary shunts. Twenty patients (42.5%) underwent external stabilization, and fasciotomy was performed in 74.5% of cases. Eight patients (17%) underwent amputations due to their injuries. All vascular repairs were patent upon hospital discharge. The mean length of hospital stay was 35 days. The hospital stay was significantly longer in patients who had fasciotomy compared with no fasciotomy. The mortality rate was 8.5%. All of these patients underwent cardiac arrest secondary to hemorrhagic shock.

## Morbidity and mortality

Overall mortality rates for these injuries ranges from 1% to 8.5%.<sup>1,6–13</sup> Mortality rates does not significantly differ between blunt and penetrating groups.<sup>1,6–13,15–17,26</sup> On long-term follow-up, many patients with successful limb salvage may demonstrate neurological disabilities associated with PAIs.<sup>1,13</sup> Patients experienced temporary or permanent peroneal nerve dysfunction with foot drop at discharge. Early mobilization and coordinated efforts by occupational and physical therapy provide improved recovery with muscle conditioning and strengthening.

High rates of compartment syndrome and limb loss are common sequelae of PAIs. However, the liberal use of fasciotomies can improve rates of amputation.<sup>7,13</sup> The decision

to amputate should involve the entire MDT and, if possible, the patient when cognitively aware. Perioperative risk factors predisposing to amputation in a large series of blunt popliteal injuries included severe soft tissue injury, deep soft tissue infection, and preoperative ischemia.<sup>1,7,13</sup> Factors associated with limb salvage included systemic anticoagulation, primary arterial repair, and palpable pedal pulse within 24 hours.<sup>26</sup>

The mortality associated with lower extremity vascular trauma remains low for patients presenting with isolated popliteal vessel injury in urban trauma centers. Greater mortality results secondary to associated thoracic, abdominal, and head injuries in addition to exsanguination. Coordinated trauma care and early MDT approach starts with field triage guidelines with emergency medical services by education of early use of tourniquets and direct pressure. The liberal use of tourniquets in the field and in trauma centers has improved overall survival rates with extremity vascular injuries.

## Conclusion

Traumatic PAIs are uncommon vascular injuries but carry significant morbidity despite the evolution of surgical management. Early diagnosis and prompt revascularization are required to improve morbidity and overall mortality. The clinical application and integration of an institutional MDT approach to such injuries provides a unique opportunity to improve clinical performance with the collaboration of surgical specialist while providing patient psychosocial support.

## Disclosure

The authors report no conflicts of interest in this work.

## References

- Sciarretta JD, Perez-Alonso AJ, Ebler DJ, Mazzini FN, Petrone P, Asensio-Gonzalez JA. Popliteal vessel injuries: complex anatomy, difficult problems and surgical challenges. *Eur J Trauma Emerg Surg*. 2012;38(4):373–391.
- Tubb CC, Oh JS, Do NV, Tai NR, Meissel MP, Place ML. Trauma care at a multinational United Kingdom-led Role 3 combat hospital: resuscitation outcomes from a multidisciplinary approach. *Mil Med*. 2014;179(11):1258–1262.
- Bach JA, Leskovan JJ, Scharschmidt T, et al. The right team at the right time: multidisciplinary approach to multi-trauma patient with orthopedic injuries. *OPUS 12 Scientist*. 2012;6(1):6–10.
- Georgiou A, Lockey DJ. The performance and assessment of hospital trauma teams. *Scan J Trauma Resusc Emerg Med*. 2010;18:66.
- D'Amours SK, Rstogi P, Ball CG. Utility of simultaneous interventional radiology and operative surgery in a dedicated suite for seriously injured patients. *Curr Opin Crit Care*. 2013;19(6):587–593.
- Fox N, Rajani RR, Bokhari F, et al. Evaluation and management of penetrating lower extremity arterial trauma: an Eastern Association for the Surgery of Trauma practice management guideline. *J Trauma Acute Care Surg*. 2012;73(5 Suppl 4):S315–S320.
- Asensio JA, Marengo J, Petrone P. Popliteal artery injuries. Less ischemic times leads to improve outcomes (unpublished data).

8. Mullenix P, Steele S, Anderson C, Starnes BW, Salim A, Martin MJ. Limb salvage and outcomes among patients with traumatic popliteal vascular injury: an analysis of the National Trauma Data Bank. *J Vasc Surg.* 2006;44(1):94–100.
9. Kauvar D, Sarfati M, Kraiss L. National trauma databank analysis of mortality and limb loss in isolated lower extremity vascular trauma. *J Vasc Surg.* 2011;53(6):1598–1603.
10. Hafez HM, Woolgar J, Robbs JV. Lower extremity arterial injury: results of 550 cases and review of risk factors associated with limb loss. *J Vasc Surg.* 2001;33(6):1212–1219.
11. Frykberg ER. Popliteal vascular injuries. *Surg Clin North Am.* 2002;82(1):67–89.
12. Fabian TC, Turkleson ML, Connelly TL, Stone HH. Injury to the popliteal artery. *Am J Surg.* 1982;143(2):225–228.
13. Sciarretta JD, Macedo FI, Otero CA, et al. Management of traumatic popliteal vascular injuries in level I trauma center: a 6-year experience. *Int J Surg.* 2015;18:136–141.
14. Trieman GS, Yellin AE, Weaver FA, et al. Examination of the patient with knee dislocation. The case for selective arteriography. *Arch Surg.* 1992;127(9):1056–1062.
15. Feliciano DV. For the patient: evolution in the management of vascular trauma. *J Trauma Acute Care Surg.* 2017;83(6):1205–1212.
16. Abou-Sayed H, Berger DL. Blunt lower-extremity trauma and popliteal artery injuries. *Arch Surg.* 2002;137(5):585–589.
17. Teixeira PGR, DuBose J. Surgical management of vascular trauma. *Surg Clin North Am.* 2017;97(5):1133–1155.
18. Seroyer ST, Musahi V, Harner CD. Management of the acute knee dislocation: the Pittsburgh experience. *Injury.* 2008;39(7):710–718.
19. Weinberg DS, Scarcella NR, Napora JK, Vallier HA. Can vascular injury be appropriately assessed with physical examination after knee dislocation? *Clin Orthop Relat Res.* 2016;474(6):1453–1458.
20. Mills WJ, Barei DP, McNair P. The value of the ankle-brachial index for diagnosing arterial injury after knee dislocation: a prospective study. *J Trauma.* 2004;56(6):1261–1265.
21. Alizo G, Sciarretta JD, Gibson S, et al. Multidisciplinary team approach to traumatic spinal cord injuries: a single institution's quality improvement project. *Eur J Trauma Emerg Surg.* 2018;44(2):245–250.
22. Frykberg E, Dennis JW, Bishop K, Laneve L, Alexander RH. The reliability of physical examination in the evaluation of penetrating extremity trauma for vascular injury: results at one year. *J Trauma.* 1991;31(4):501–511.
23. Worni M, Scarborough JE, Gandhi M, Pietrobon R, Shortell CK. Use of endovascular therapy for peripheral arterial lesions: an analysis of the National Trauma Data Bank from 2007 to 2009. *Ann Vasc Surg.* 2013;27(3):299e305.
24. Macedo FI, Sciarretta JD, Salsamendi J, Karmacharya J, Romano A, Namias N. Repair of an acute blunt popliteal artery trauma via endovascular approach. *Ann Vasc Surg.* 2015;29(2):366.e5–366.e10.
25. Hutto JD, Reed AB. Endovascular repair of an acute blunt popliteal artery injury. *J Vasc Surg.* 2007;45(1):188–190.
26. Wagner W, Calkins E, Weaver F, Goodwin JA, Myles RA, Yellin AE. Blunt popliteal artery trauma: one hundred consecutive injuries. *J Vasc Surg.* 1988;7(5):736–743.

## Journal of Multidisciplinary Healthcare

### Publish your work in this journal

The Journal of Multidisciplinary Healthcare is an international, peer-reviewed open-access journal that aims to represent and publish research in healthcare areas delivered by practitioners of different disciplines. This includes studies and reviews conducted by multidisciplinary teams as well as research which evaluates the results or conduct of such teams or health

care processes in general. The journal covers a very wide range of areas and welcomes submissions from practitioners at all levels, from all over the world. The manuscript management system is completely online and includes a very quick and fair peer-review system. Visit <http://www.dovepress.com/testimonials.php> to read real quotes from published authors.

Submit your manuscript here: <https://www.dovepress.com/journal-of-multidisciplinary-healthcare-journal>

Dovepress