

# Effects of sarpogrelate, eicosapentaenoic acid and pitavastatin on arteriosclerosis obliterans-related biomarkers in patients with type 2 diabetes (SAREPITASO study)

Shosaku Nomura<sup>1</sup>  
Takehito Taniura<sup>2</sup>  
Akira Shouzu<sup>3</sup>  
Seitaro Omoto<sup>4</sup>  
Masahiko Suzuki<sup>5</sup>  
Yoshinori Okuda<sup>6</sup>  
Tomoki Ito<sup>1</sup>

<sup>1</sup>First Department of Internal Medicine, Kansai Medical University, Hirakata, <sup>2</sup>Division of Internal Medicine, Daiwa Hospital, Suita, <sup>3</sup>Division of Internal Medicine, Saiseikai Izuo Hospital, Osaka, <sup>4</sup>Division of Internal Medicine, Korigaoka Yukeikai Hospital, Hirakata, <sup>5</sup>Division of Internal Medicine, Katano Hospital, Katano, <sup>6</sup>Division of Internal Medicine, Meisei Memorial Hospital, Osaka, Japan

**Background:** The aim was to evaluate the significance of arteriosclerosis obliterans-related biomarkers in patients with type 2 diabetes mellitus (T2DM), and to compare the effects of sarpogrelate, eicosapentaenoic acid (EPA) and pitavastatin on these markers.

**Patients and methods:** Seventy-two arteriosclerosis obliterans patients with T2DM were classified into two groups, pitavastatin with either sarpogrelate (PS) or EPA (PE). We observed no differences in all biomarkers between the PS and PE groups before treatments.

**Results:** The levels of body mass index, hemoglobin A1c, soluble E-selectin, soluble vascular cell adhesion molecule 1, plasminogen activator inhibitor-1 and platelet-derived microparticle in the PE group decreased significantly after treatment. The ankle brachial pressure index and adiponectin levels significantly increased in the PE group after treatment compared with the PS group.

**Conclusion:** These results suggest that combination therapy using pitavastatin and EPA possesses an antiatherosclerotic effect and may be beneficial for prevention of vascular complications in patients with T2DM.

**Keywords:** T2DM, pitavastatin, sarpogrelate, eicosapentaenoic acid, EPA, adiponectin, platelet-derived microparticle, PDMP

## Introduction

Atherosclerosis is a progressive inflammatory process and is the major cause of death in patients with type 2 diabetes mellitus (T2DM).<sup>1,2</sup> In particular, endothelial cells, monocytes and platelets play important roles in the development of atherosclerosis.<sup>2</sup> Low-density lipoprotein (LDL) could be used to predict the onset and death of Japanese atherosclerosis-associated diseases.<sup>3</sup> In addition, a large-scale clinical trial in Japan in which patients were examined for hypercholesterolemia and subsequently intervened in a lifestyle improvement program has reported that coronary diseases can be significantly controlled.<sup>4,5</sup>

The underlying pathology of arteriosclerosis obliterans (ASO) is basically atherosclerosis with often observed complete thrombi occlusions.<sup>6</sup> The ASO-related biomarkers such as C-reactive protein (CRP), interleukin (IL)-6, soluble E-selectin (sE-selectin), soluble vascular cell adhesion molecule (sVCAM)-1 and plasminogen activator inhibitor (PAI)-1 are markedly elevated in patients with T2DM.<sup>7-11</sup> In addition to these biomarkers, platelet-derived microparticle (PDMP) is significant in athero-

Correspondence: Shosaku Nomura  
First Department of Internal Medicine,  
Kansai Medical University, 2-3-1 Shin-  
machi, Hirakata, Osaka 573-1191, Japan  
Tel + 81 72 804 2754  
Fax + 81 72 804 2041  
Email nomurash@hirakata.kmu.ac.jp

sclerosis in T2DM patients, because these patients typically display hypercoagulability and platelet hyperaggregability with increased levels of platelet activation markers.<sup>8,12–14</sup> The PDMPs are generated by platelet activation and play roles in normal hemostatic responses to vascular injury.<sup>15–18</sup> In addition, it is thought that PDMPs contribute to thrombin generation and thrombus formation by generating tissue factor.<sup>14,19,20</sup> Therefore, PDMPs may ultimately cause vascular complications in T2DM with the participation of the blood coagulation system.

Another important biomarker in T2DM-related atherosclerosis is adiponectin.<sup>21–23</sup> Adiponectin is an adipokine with anti-inflammatory, antiatherogenic and insulin-sensitizing properties.<sup>23</sup> Adiponectin possibly suppresses the attachment of monocytes to endothelial cells,<sup>24</sup> and stimulates nitric oxide production in vascular endothelial cells, which ameliorates endothelial function.<sup>21,24</sup> In addition, adiponectin inhibits tissue factor expression and enhances tissue factor pathway inhibitor expression in human endothelial cells.<sup>25</sup> These observations suggest that hypoadiponectinemia may be associated with an increased incidence of vascular disease in T2DM.

Therefore, it is thought that the novel therapeutic strategy of ASO-related biomarkers for lipid abnormality is important for atherosclerosis in T2DM patients. In particular, the countermeasure for platelet activation and endothelial dysfunction is necessary. We previously reported that the combination therapy of pitavastatin and eicosapentaenoic acid (EPA) may be beneficial for the prevention of vascular complication in hyperlipidemic patients with T2DM.<sup>26</sup> Pitavastatin has various pleiotropic effects, resulting in the improvement of endothelial function and preventing the progression of aortic atherosclerosis.<sup>27,28</sup>

Studies have reported other effects of EPA on serum lipids, including a unique preventive effect against atherosclerotic disease and coronary events.<sup>29–31</sup> However, the influence of other antiplatelet drugs besides EPA on pitavastatin treatment for ASO in T2DM patients is poorly understood. In our present study, we compared the effect of sarpogrelate<sup>32,33</sup> or EPA on pitavastatin treatment for ASO in T2DM, focusing on the antiatherosclerotic properties of these combination therapies (SARpogrelate-EPA-PITavastatin-ASO [SAREPITASO] study). All three of these drugs have a common feature that raises the level of adiponectin.<sup>26,34–36</sup>

## Patients and methods

### Study design

The SAREPITASO study is a randomized, non-blinded, parallel-group study. We enrolled patients who satisfied all

inclusion criteria. All study participants provided signed informed consent, and this study was approved by the ethics committee of Kansai Medical University, Hirakata, Osaka, Japan (no. 110614).

### Study population

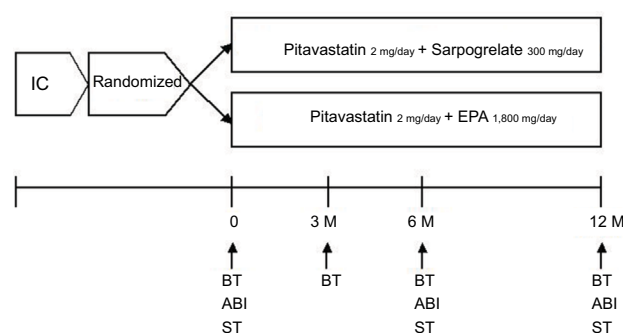
The study group included 84 T2DM patients and 50 non-diabetic controls. Between August 2012 and March 2016, we selected participants from T2DM patients admitted to our hospital for treatment. Entry criteria required that participants had no history of inflammatory, coronary artery or cerebrovascular disease, or no clinically detectable renal (serum creatinine  $\geq 2.0$  mg/dL), hepatic (elevated serum transaminase levels), infectious (fever or elevated white blood cell count) or malignant disease (based on ultrasound or computed tomography examination) within the 3 months before enrollment. Other antithrombotic agents were prohibited to avoid potential influence of data interpretation. The concomitant use of these drugs was fixed for a certain period before study entry.

### Study protocol

Pitavastatin of 2 mg with either EPA 1,800 mg or sarpogrelate 300 mg was administered daily for 12 months (Figure 1). No other pharmacologic regimen changes occurred during treatment in any of the patients. Clinical and biochemical data obtained before and after pitavastatin with either EPA (PE group) or sarpogrelate (PS group) administration were compared. There were 19 patients using an angiotensin II receptor blocker (ARB) and 14 patients using a Ca antagonist for hypertension in T2DM. Of these patients, 52 were treated with sulfonylureas, 56 with  $\alpha$ -glucosidase inhibitors, 47 with DPP4 inhibitor and 41 with insulin. The doses of drugs were not adjusted during the study. Hyperlipidemia was defined according to the Guidelines for Diagnosis and Treatment of Hyperlipidemias in Adults published by the Japan Atherosclerosis Society.<sup>37</sup> The American Diabetes Association criteria were used to define T2DM.<sup>38</sup> Table 1 shows the clinical characteristics of the T2DM patients and the control subjects.

### Endpoints

The primary endpoint was improvement of ankle brachial pressure index (ABI) within 12 months. The secondary endpoints were changes in levels of 1) body mass index (BMI); 2) total cholesterol, high-density lipoprotein cholesterol and LDL cholesterol; 3) glycated hemoglobin (HbA1c); 4) CRP, IL-6 and monocyte-chemoattractant protein (MCP)-1; 5) sE-selectin, sVCAM-1 and PAI-1; 6) PDMP and 7) adiponectin.



**Figure 1** Schema of study protocol.

**Abbreviations:** ABI, ankle-brachial pressure index; BT, blood test; EPA, eicosapentaenoic acid; IC, informed consent; M, months; ST, special test.

## Assessment of PDMP

The PDMP levels were measured twice and the mean values were recorded. Furthermore, some basic studies were carried out before this assessment using clinical specimens. An enzyme-linked immunosorbent assay (ELISA) kit was used for PDMP measurements (JIMRO Co. Ltd., Tokyo, Japan).<sup>16</sup>

## Measurements of cytokine, soluble factors and adiponectin

Fasting blood samples from patients and controls were collected into tubes either with or without sodium citrate and allowed to clot at room temperature for a minimum of 1 hour. Citrated plasma or serum samples were isolated by centrifugation at 1,000×g for 20 minutes at 4°C and stored at −30°C until analysis. Plasma concentrations of IL-6, MCP-1, sE-selectin, sVCAM-1 and PAI-1 were measured using monoclonal antibody-based ELISA kits (Thermo Fisher Scientific, Waltham, MA, USA), and plasma adiponectin was measured with adiponectin ELISA kits (Otsuka Pharmaceuticals Co. Ltd., Tokyo, Japan). The recombinant products and standard solutions provided with each kit were used as positive controls in each assay, and all procedures were performed according to the manufacturers' instructions.

## Statistical analysis

Data were expressed as mean±SD and were analyzed using multivariate regression analysis, as appropriate. Between-group comparisons were performed using the Newman–Keuls test and the Scheffe's test. The correlation between uric acid concentration and continuous variables was assessed using multivariate linear regression analysis. The significance of differences among variables was determined by analysis of variance. *P*-values <0.05 were considered statistically

significant. All analyses were performed using the StatFlex program (version 6).

## Results

### Omitted patients

There were no cardiovascular events, cases of cerebral infarction or cases of liver dysfunction. Five T2DM patients showed abnormal laboratory data (renal failure and infections) and three T2DM patients changed hospital. Therefore, we collected and analyzed data from 50 nondiabetic and 76 T2DM patients.

### Clinical characteristics of T2DM patients

Age, BMI, fasting blood glucose and HbA1c were higher in T2DM patients than in nondiabetic controls (Table 1). However, ABI in T2DM patients was significantly lower than in nondiabetic controls. The values of total cholesterol, high-density lipoprotein cholesterol and low-density lipoprotein cholesterol were similar in both groups before treatment (Table 1).

### Univariate and multivariate regression analyses

We investigated the associations between 16 variables and ABI concentration in T2DM patients (Table 2). Univariate analysis showed that BMI, HbA1c, LDL, CRP, MCP-1, sE-selectin, sVCAM-1, PDMP, PAI-1 and adiponectin were factors significantly associated with ABI, whereas HbA1c, CRP, PDMP and PAI-1 were significantly correlated with ABI in multivariate analysis.

### Comparison of changes in all markers of PS or PE groups after treatment

There were no significant differences in the clinical characteristics between the PS and PE groups before treatment (Table 3). The levels of ABI, BMI, HbA1c and MCP-1 improved significantly after treatment in the PE group, although the PS group did not exhibit a significant change (Figure 2). The sE-selectin, sVCAM-1, PDMP and PAI-1 levels decreased significantly in the PE group after treatment, although the PS group did not exhibit significant changes (Figure 3). However, both groups displayed a significant increase in adiponectin levels after treatment, whereas the PE group exhibited greater significant changes (Figure 3).

## Discussion

Various factors are involved in diabetic vascular changes, one of which is platelet activation.<sup>8,12,39,40</sup> Some platelet

**Table 1** Demographic and clinical characteristics of the T2DM patients and nondiabetic controls

	Controls (n=50)	T2DM (n=84)	P-value
Men/women (no.)	29/21	48/36	NS
Age (years)	62±13	74±10	<0.05
ABI (ratio)	1.13±0.25	0.93±0.23	<0.05
BMI (kg/m <sup>2</sup> )	22.1±4.1	24.5±3.9	<0.05
FBG (mg/dL)	108±37	129±42	<0.01
HbA1c (%)	5.3±1.9	7.2±1.2	<0.001
TC (mg/dL)	221±47	212±41	NS
HDL-C (mg/dL)	53±16	52±14	NS
LDL-C (mg/dL)	129±39	126±37	NS
Risk factor, n (%)			
Current smoking	5 (10.0)	11 (13.1)	NS
complication, n (%)			
Angina pectoris	7 (14.0)	15 (17.9)	NS
Heart failure	2 (4.0)	8 (9.5)	NS
Cerebral infarction	4 (8.0)	9 (10.7)	NS
Hypertension	11 (22.0)	24 (28.6)	NS
medication, n (%)			
ARBs	10 (20.0)	19 (22.6)	NS
Ca antagonists	5 (10.0)	14 (16.7)	NS
Aspirin	7 (14.0)	13 (15.5)	NS
Sulfonylureas	0 (0.0)	52 (61.9)	<0.01
α-GI	0 (0.0)	56 (66.7)	<0.001
DPP4-I	0 (0.0)	47 (55.9)	<0.01
Insulin therapy	0 (0.0)	41 (48.8)	<0.01

**Notes:** Data are shown as mean±SD. P-value, T2DM patients vs nondiabetic controls.

**Abbreviations:** α-GI, α-glucosidase inhibitor; ABI, ankle brachial pressure index; ARB, angiotensin II receptor blocker; BMI, body mass index; DPP4-I, DPP4 inhibitor; FBG, fasting blood glucose; HbA1c, hemoglobin A1c; HDL-C, high-density lipoprotein cholesterol; LDL-C, low-density lipoprotein cholesterol; NS, not significant; T2DM, type 2 diabetes mellitus; TC, total cholesterol.

**Table 3** Demographic and clinical characteristics of the PS and PE groups

	PS (n=38)	PE (n=38)	P-value
Men/women (no.)	23/15	24/14	NS
Age (years)	72±10	76±9	NS
ABI (ratio)	0.94±0.19	0.93±0.21	NS
BMI (kg/m <sup>2</sup> )	24.8±5.5	24.3±3.1	NS
FBG (mg/dL)	123±39	127±44	NS
HbA1c (%)	7.3±1.3	7.1±0.9	NS
TC (mg/dL)	203±36	216±45	NS
HDL-C (mg/dL)	54±12	50±16	NS
LDL-C (mg/dL)	124±34	127±39	NS
Risk factor, n (%)			
Current smoking	4 (10.5)	6 (15.8)	NS
complication, n (%)			
Angina pectoris	8 (21.1)	7 (18.4)	NS
Heart failure	4 (10.5)	3 (7.9)	NS
Cerebral infarction	4 (10.5)	4 (10.5)	NS
Hypertension	10 (26.3)	13 (34.2)	NS
medication, n (%)			
ARBs	8 (21.1)	8 (21.1)	NS
Ca antagonists	6 (15.8)	5 (13.2)	NS
Aspirin	6 (15.8)	5 (13.2)	NS
Sulfonylureas	25 (65.8)	26 (68.4)	NS
α-GI	24 (63.2)	23 (60.5)	NS
DPP4-I	28 (73.7)	27 (71.1)	NS
Insulin therapy	19 (50.0)	22 (57.9)	NS

**Notes:** Data are shown as mean±SD. P-value, PE vs PS.

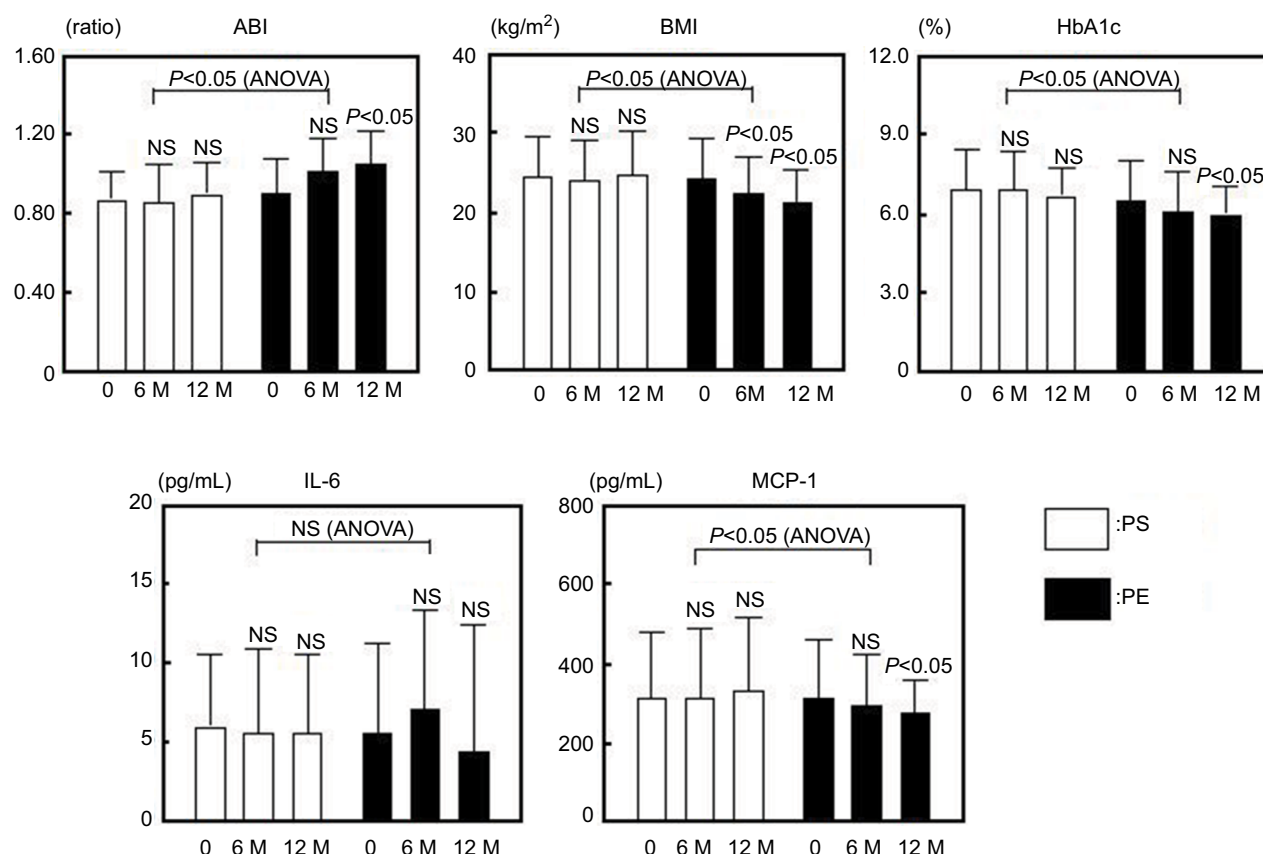
**Abbreviations:** α-GI, α-glucosidase inhibitor; ABI, ankle brachial pressure index; ARB, angiotensin II receptor blocker; BMI, body mass index; DPP4-I, DPP4 inhibitor; FBG, fasting blood glucose; HbA1c, hemoglobin A1c; HDL-C, high-density lipoprotein cholesterol; LDL-C, low-density lipoprotein cholesterol; NS, not significant; PE, pitavastatin with eicosapentaenoic acid; PS, pitavastatin with sarpogrelate; TC, total cholesterol.

**Table 2** Multiple regression analysis of ABI in T2DM patients

Analysis	Univariate		Multivariate	
	β	P-value	β	P-value
Age (years)	0.2247	0.08956		
Sex (men)	-0.1128	0.31257		
BMI (kg/m <sup>2</sup> )	-0.3395	0.00343*	-0.2139	0.07914
HbA1c (%)	-0.4216	0.00287*	-0.2969	0.04972*
UA (mg/dL)	0.0219	0.56475		
TC (mg/dL)	-0.1869	0.11239		
HDL (mg/dL)	0.2418	0.09774		
LDL (mg/dL)	-0.3125	0.00963*	-0.2537	0.05649
CRP (mg/dL)	-0.4129	0.00166*	-0.3218	0.01024*
IL-6 (pg/mL)	0.1433	0.13207		
MCP-1 (pg/mL)	-0.3127	0.01236	-0.2027	0.08961
sE-selectin (ng/mL)	-0.2686	0.04423*	-0.1366	0.09897
sVCAM-1 (ng/mL)	-0.2762	0.04124*	-0.1966	0.09567
PDMP (U/mL)	-0.5029	0.00012*	-0.3984	0.01356*
PAI-1 (ng/mL)	-0.5244	0.01029*	-0.4313	0.01129*
Adiponectin (μg/mL)	0.3235	0.02867*	0.2047	0.09833

**Note:** \*P<0.05.

**Abbreviations:** ABI, ankle brachial pressure index; BMI, body mass index; CRP, C-reactive protein; HbA1c, hemoglobin A1c; HDL, high-density lipoprotein; IL-6, interleukin-6; LDL, low-density lipoprotein; MCP-1, monocyte chemoattractant protein-1; PAI-1, plasminogen activator inhibitor-1; PDMP, platelet-derived microparticle; sE-selectin, soluble E-selectin; sVCAM-1, soluble vascular cell adhesion molecule 1; T2DM, type 2 diabetes mellitus; TC, total cholesterol; UA, uric acid.



**Figure 2** Changes in ABI, BMI, HbA1c, IL-6 and MCP-1 in response to treatment with PS or PE in T2DM patients.

**Notes:** Bars show the mean±SD. 0: before; M: months (after). P-values are for comparison with each baseline parameter (0 vs 6 and 12 months). ANOVA (PS vs PE).

**Abbreviations:** ABI, ankle brachial pressure index; ANOVA, analysis of variance; BMI, body mass index; HbA1c, hemoglobin A1c; IL-6, interleukin-6; MCP-1, monocyte chemoattractant protein-1; NS, nonsignificant; PE, pitavastatin with eicosapentaenoic acid; PS, pitavastatin with sarpogrelate; T2DM, type 2 diabetes mellitus.

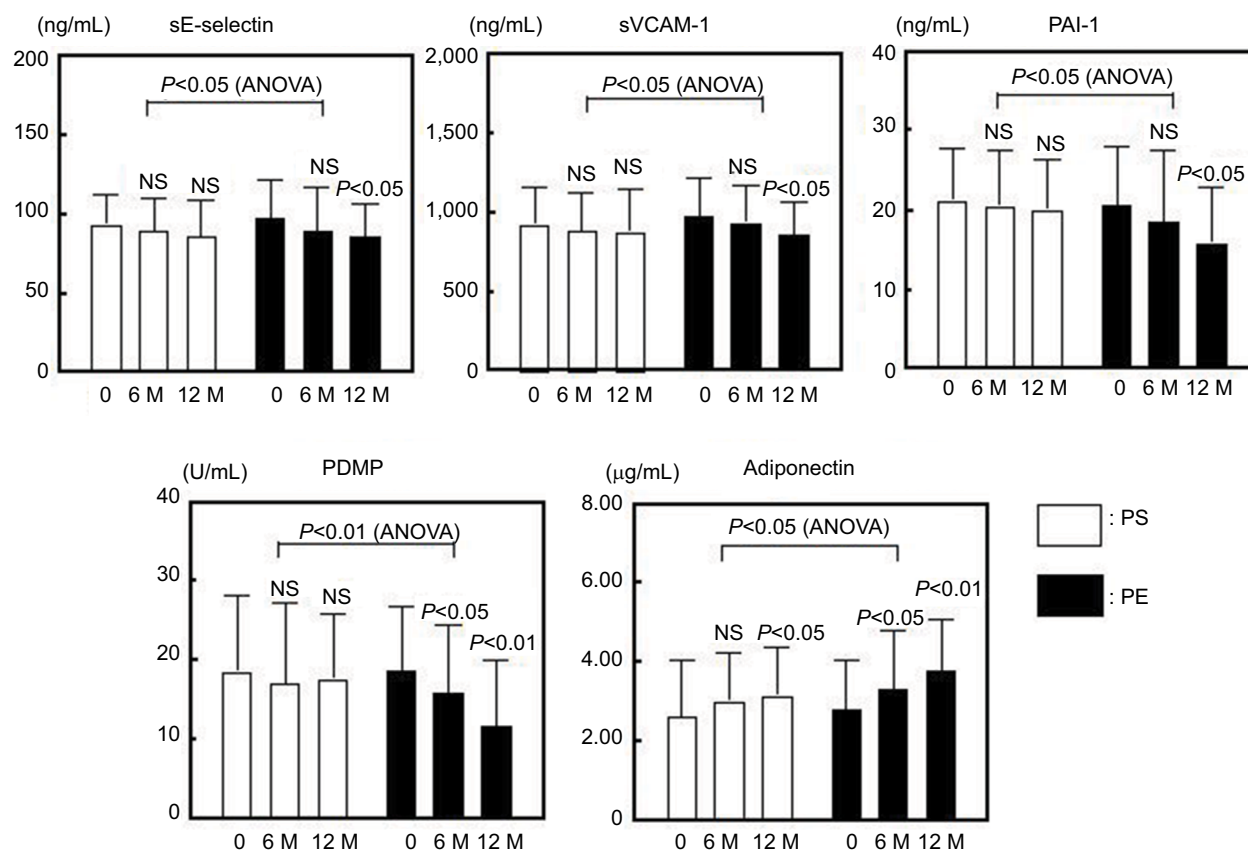
activation markers are elevated in patients with T2DM.<sup>8,13</sup> The marker PDMP, which is derived from activated platelets, plays an important role in the process of coagulation, so that an increase of PDMP causes hypercoagulability.<sup>18</sup> We previously reported that PDMPs were significantly increased in diabetic patients with high LDL levels compared with similar patients who had low LDL levels.<sup>13</sup> Because PDMP enhanced the expression of adhesion molecules on monocytes and endothelial cells,<sup>41</sup> it seems possible that PDMP may participate in the development or progression of atherosclerosis in patients with diabetes. The potential incapability of intensive antiplatelet drugs (cilostazol and ticlopidine) was previously reported.<sup>42,43</sup> In addition, these drugs can inhibit the elevation of PDMP.<sup>44,45</sup> However, the use of these drugs for primary prevention of atherothrombosis is problematic. For this reason, we evaluated EPA and sarpogrelate. We classified patients with diabetes into two groups according to combination therapy of either PE or PS. Interestingly, T2DM patients with PE exhibited a significant

decrease of PDMP after treatment. These results correspond with previous reports on the microvascular complications of diabetes.<sup>26,35</sup>

In patients with T2DM, a significant decrease in plasma adiponectin which prevents vascular complications has been found.<sup>21,24,46</sup> In particular, we evaluated the efficacy of PS and PE therapy for hypoadiponectinemia and found that not only PE but also PS improves hypoadiponectinemia in T2DM. In addition, PE exhibited a better effect for adiponectin compared with PS. This result suggests that PE may exert its antiatherosclerotic effect via modification of adiponectin levels, thus contributing to the adiponectin-dependent PDMP-reducing action. Although the exact mechanism by which PE treatment leads to an increase in circulating adiponectin levels remains unclear, we previously reported about the role of the peroxisome proliferator-activated receptor gamma which can be activated by EPA.<sup>36,47</sup>

Hypoadiponectinemia is associated with endothelial dysfunction<sup>21</sup> and appears to cause platelet activation, since





**Figure 3** Changes in sE-selectin, sVCAM-1, PAI-1, PDMP and adiponectin in response to treatment with PS or PE of T2DM patients.

**Notes:** Bars show the mean ± SD. 0: before M: months (after). P-values are for comparison with each baseline parameter (0 vs 6 and 12 months). ANOVA (PS vs PE).

**Abbreviations:** ANOVA, analysis of variance; NS, nonsignificant; PAI-1, plasminogen activator inhibitor-1; PDMP, platelet-derived microparticle; sE-selectin, soluble E-selectin; sVCAM-1, soluble vascular cell adhesion molecule 1; PE, pitavastatin with eicosapentaenoic acid; PS, pitavastatin with sarpogrelate; T2DM, type 2 diabetes mellitus.

the levels of nitric oxide, which regulates platelet activation, are decreased in patients with hypoadiponectinemia. It has been reported that adiponectin stimulates the production of nitric oxide in vascular endothelial cells,<sup>24,48</sup> resulting in platelet activation at low concentrations of nitric oxide. Thus, the increase of adiponectin by EPA may exert a platelet-inhibitory effect via nitric oxide. Our results suggest that EPA possesses multifunctional antithrombotic properties, and that its action is dependent on adiponectin. In particular, the significant reduction of ABI in the PE group might be important, because ABI has diagnostic significance for peripheral artery disease (PAD); the exacerbation of PAD is related to fatty acid and the abnormality of fatty acid is a death risk factor of events of the lower limbs.<sup>49,50</sup> Furthermore, statin can control the outcome of lower limbs in PAD.<sup>51</sup> Therefore, PE treatment is considered a useful strategy for the progression of vascular events in patients with T2DM.

## Conclusion

PE could increase ABI and circulating adiponectin levels in T2DM. In addition, PE could improve PDMP and endothelial activation markers such as sVCAM-1, sE-selectin and PAI-1 in T2DM. Therefore, PE may offer promise as a primary preventive therapy for atherothrombosis in T2DM, even though we were unable to recognize any specific clinical characteristics or occurrence of microvascular complications in this group of patients.

## Acknowledgment

We thank Kenneth Tiezen, PhD, from Edanz Group ([www.edanzediting.com/ac](http://www.edanzediting.com/ac)) for editing a draft of this manuscript.

## Author contributions

All authors contributed toward data analysis, drafting and revising the paper and agree to be accountable for all aspects of the work.

## Disclosure

The authors report no conflicts of interest in this work.

## References

- Steiner G. Atherosclerosis, the major complication of diabetes. *Adv Exp Med Biol.* 1985;189:277–297.
- Ross R. Atherosclerosis: an inflammatory disease. *N Engl J Med.* 1999;340(2):115–126.
- Yokokawa H, Yasumura S, Tanno K, et al. Serum low-density lipoprotein to high-density lipoprotein ratio as a predictor of future acute myocardial infarction among men in a 2.7-year cohort study of a Japanese northern rural population. *J Atheroscler Thromb.* 2011;18(2):89–98.
- Ito H, Ouchi Y, Ohashi Y, et al. A comparison of low versus standard dose pravastatin therapy for the prevention of cardiovascular events in the elderly: the pravastatin anti-atherosclerosis trial in the elderly (PATE). *J Atheroscler Thromb.* 2001;8(2):33–44.
- Saito I, Iso H, Kokubo Y, Inoue M, Tsugane S. Metabolic syndrome and all-cause and cardiovascular disease mortality: Japan Public Health Center-based Prospective (JPHC) Study. *Circ J.* 2009;73(5):878–884.
- Schwartz SM, DeBlois D, O'Brien ER. The intima. Soil for atherosclerosis and restenosis. *Circ Res.* 1995;77(3):445–465.
- Steiner M, Reinhardt KM, Krammer B, Ernst B, Blann AD. Increased levels of soluble adhesion molecules in type 2 (non-insulin dependent) diabetes mellitus are independent of glycaemic control. *Thromb Haemost.* 1994;72(6):979–984.
- Nomura S, Shouzu A, Omoto S, Nishikawa M, Fukuhara S. Significance of chemokines and activated platelets in patients with diabetes. *Clin Exp Immunol.* 2000;121(3):437–443.
- Bastard JP, Jardel C, Delattre J, Hainque B, Bruckert E, Oberlin F. Evidence for a link between adipose tissue interleukin-6 content and serum C-reactive protein concentrations in obese subjects. *Circulation.* 1999;99(16):2221–2222.
- Festa A, Williams K, Tracy RP, Wagenknecht LE, Haffner SM. Progression of plasminogen activator inhibitor-1 and fibrinogen levels in relation to incident type 2 diabetes. *Circulation.* 2006;113(14):1753–1759.
- Ishikawa S, Kayaba K, Gotoh T, Nakamura Y, Kajii E. Metabolic syndrome and C-reactive protein in the general population: JMS Cohort Study. *Circ J.* 2007;71(1):26–31.
- Garcia Frade LJ, de La Calle H, Alava I, Navarro JL, Creighton LJ, Gaffney PJ. Diabetes mellitus as a hypercoagulable state: its relationship with fibrin fragments and vascular damage. *Thromb Res.* 1987;47(5):533–540.
- Nomura S, Suzuki M, Katsura K, et al. Platelet-derived microparticles may influence the development of atherosclerosis in diabetes mellitus. *Atherosclerosis.* 1995;116(2):235–240.
- Nomura S, Imamura A, Okuno M, et al. Platelet-derived microparticles in patients with arteriosclerosis obliterans: enhancement of high shear-induced microparticle generation by cytokines. *Thromb Res.* 2000;98(4):257–268.
- Nomura S, Ozaki Y, Ikeda Y. Function and role of microparticles in various clinical settings. *Thromb Res.* 2008;123(1):8–23.
- Nomura S, Shouzu A, Taomoto K, et al. Assessment of an ELISA kit for platelet-derived microparticles by joint research at many institutes in Japan. *J Atheroscler Thromb.* 2009;16(6):878–887.
- Nomura S, Shimizu M. Clinical significance of procoagulant microparticles. *J Intensive Care.* 2015;3(1):2–11.
- Nomura S. Microparticle and atherothrombotic diseases. *J Atheroscler Thromb.* 2016;23(1):1–9.
- Miyazaki Y, Nomura S, Miyake T, et al. High shear stress can initiate both platelet aggregation and shedding of procoagulant containing microparticles. *Blood.* 1996;88(9):3456–3464.
- Sinauridze EI, Kireev DA, Popenko NY, et al. Platelet microparticle membranes have 50- to 100-fold higher specific procoagulant activity than activated platelets. *Thromb Haemost.* 2007;97(3):425–434.
- Ntaios G, Gatselis NK, Makaritsis K, Dalekos GN. Adipokines as mediators of endothelial function and atherosclerosis. *Atherosclerosis.* 2013;227(2):216–221.
- Carbone F, Mach F, Montecucco F. The role of adipocytokines in atherogenesis and atheroprotection. *Curr Drug Targets.* 2015;16(4):295–320.
- Katsiki N, Mantzoros C, Mikhailidis DP. Adiponectin, lipids and atherosclerosis. *Curr Opin Lipidol.* 2017;28(4):347–354.
- Margaritis M, Antonopoulos AS, Digby J, et al. Interactions between vascular wall and perivascular adipose tissue reveal novel roles for adiponectin in the regulation of endothelial nitric oxide synthase function in human vessels. *Circulation.* 2013;127(22):2209–2221.
- Chen YJ, Zhang LQ, Wang GP, et al. Adiponectin inhibits tissue factor expression and enhances tissue factor pathway inhibitor expression in human endothelial cells. *Thromb Haemost.* 2008;100(2):291–300.
- Nomura S, Inami N, Shouzu A, et al. The effects of pitavastatin, eicosapentaenoic acid and combined therapy on platelet-derived microparticles and adiponectin in hyperlipidemic, diabetic patients. *Platelets.* 2009;20(1):16–22.
- Hayashi T, Rani P, Fukatsu A, et al. A new HMG-CoA reductase inhibitor, pitavastatin remarkably retards the progression of high cholesterol induced atherosclerosis in rabbits. *Atherosclerosis.* 2004;176(2):255–263.
- Nomura S. Pitavastatin in the management of hypercholesterolemia. *Clin Med Ther.* 2009;1:1477–1488.
- Koba S, Sasaki J. Treatment of hyperlipidemia from Japanese evidence. *J Atheroscler Thromb.* 2006;13(6):267–280.
- Nomura S, Kanazawa S, Fukuhara S. Effects of eicosapentaenoic acid on platelet activation markers and cell adhesion molecules in hyperlipidemic patients with type 2 diabetes mellitus. *J Diabetes Complications.* 2003;17(3):153–159.
- Yokoyama M, Origasa H, Matsuzaki M. Japan EPA lipid intervention study (JELIS) Investigators. Effects of eicosapentaenoic acid on major coronary events in hypercholesterolaemic patients (JELIS): a randomized open-label, blind endpoint analysis. *Lancet.* 2007;369(9567):1090–1098.
- Park SY, Rhee SY, Oh S, et al. Evaluation of the effectiveness of sarpogrelate on the surrogate markers for macrovascular complications in patients with type 2 diabetes. *Endocr J.* 2012;59(8):709–716.
- Lee DH, Chun EJ, Hur JH, et al. Effect of sarpogrelate, a selective 5-HT<sub>2A</sub> receptor antagonist, on characteristics of coronary artery disease in patients with type 2 diabetes. *Atherosclerosis.* 2017;257:47–54.
- Nomura S, Shouzu A, Omoto S, Nishikawa M, Iwasaka T. 5-HT<sub>2A</sub> receptor antagonist increases circulating adiponectin in patients with type 2 diabetes. *Blood Coagul Fibrinolysis.* 2005;16(6):423–428.
- Nomura S, Shouzu A, Omoto S, et al. Correlation between adiponectin and reduction of cell adhesion molecules after pitavastatin treatment in hyperlipidemic patients with type 2 diabetes mellitus. *Thromb Res.* 2008;122(1):39–45.
- Nomura S, Shouzu A, Omoto S, et al. Effects of eicosapentaenoic acid on endothelial cell-derived microparticles, angiopoietins and adiponectin in patients with type 2 diabetes. *J Atheroscler Thromb.* 2009;16(2):83–90.
- Hata Y, Mabuchi H, Saito Y, et al. Investigating Committee of Guideline for Diagnosis and Treatment of Hyperlipidemias Japan Atherosclerosis Society. Guideline for Diagnosis and Treatment of Hyperlipidemias in Adults. *Doumyakukouka.* 1997;25:1–34.
- The Expert Committee on the Diagnosis and Classification of Diabetes Mellitus: report of the expert committee on the diagnosis and classification of diabetes mellitus. *Diabetes Care.* 2003;26(Suppl 1):S5–S20.
- Packham MA, Mustard JF. The role of platelets in the development and complications of atherosclerosis. *Semin Hematol.* 1986;23(1):8–19.
- Tschoepe D, Roesen P, Esser J, et al. Large platelets circulate in an activated state in diabetes mellitus. *Semin Thromb Hemost.* 1991;17(04):433–438.
- Nomura S, Tandon NN, Nakamura T, Cone J, Fukuhara S, Kambayashi J. High-shear-stress-induced activation of platelets and microparticles enhances expression of cell adhesion molecules in THP-1 and endothelial cells. *Atherosclerosis.* 2001;158(2):277–287.
- Uchiyama S, Demaerschalk BM, Goto S, et al. Stroke prevention by cilostazol in patients with atherothrombosis: meta-analysis of placebo-controlled randomized trials. *J Stroke Cerebrovasc Dis.* 2009;18(6):482–490.

43. Damman P, Woudstra P, Kuijt WJ, de Winter RJ, James SK. P2Y<sub>12</sub> platelet inhibition in clinical practice. *J Thromb Thrombolysis*. 2012;33(2):143–153.
44. Nomura S, Shouzu A, Omoto S, et al. Effect of cilostazol on soluble adhesion molecules and platelet-derived microparticles in patients with diabetes. *Thromb Haemost*. 1998;80(3):388–392.
45. Nomura S, Inami N, Iwasaka T, Liu Y. Platelet activation markers, microparticles and soluble adhesion molecules are elevated in patients with arteriosclerosis obliterans: therapeutic effects by cilostazol and potentiation by dipyridamole. *Platelets*. 2004;15(3):167–172.
46. Hotta K, Funahashi T, Arita Y, et al. plasma concentrations of a novel, adipose-specific protein, adiponectin, in type 2 diabetic patients. *Arterioscler Thromb Vasc Biol*. 2000;20(6):1595–1599.
47. Yilmaz MI, Sonmez A, Caglar K, et al. Peroxisome proliferator-activated receptor gamma (PPAR-gamma) agonist increases plasma adiponectin levels in type 2 diabetic patients with proteinuria. *Endocrine*. 2004;25(3):207–214.
48. Nomura S, Shouzu A, Omoto S, Nishikawa M, Fukuhara S, Iwasaka T. Effect of valsartan on monocyte/endothelial cell activation markers and adiponectin in hypertensive patients with type 2 diabetes mellitus. *Thromb Res*. 2006;117(4):385–392.
49. Gautam M, Izawa A, Shiba Y, et al. Importance of fatty acid compositions in patients with peripheral arterial disease. *PLoS One*. 2014;9(9):e107003.
50. Hishikari K, Kimura S, Yamakami Y, et al. The prognostic value of the serum eicosapentaenoic acid to arachidonic acid ratio in relation to clinical outcomes after endovascular therapy in patients with peripheral artery disease caused by femoropopliteal artery lesions. *Atherosclerosis*. 2015;239(2):583–588.
51. Kumbhani DJ, Steg PG, Cannon CP, et al. Statin therapy and long-term adverse limb outcomes in patients with peripheral artery disease: insights from the REACH registry. *Eur Heart J*. 2014;35(41):2864–2872.

## Vascular Health and Risk Management

### Publish your work in this journal

Vascular Health and Risk Management is an international, peer-reviewed journal of therapeutics and risk management, focusing on concise rapid reporting of clinical studies on the processes involved in the maintenance of vascular health; the monitoring, prevention and treatment of vascular disease and its sequelae; and the involvement of

metabolic disorders, particularly diabetes. This journal is indexed on PubMed Central and MedLine. The manuscript management system is completely online and includes a very quick and fair peer-review system, which is all easy to use. Visit <http://www.dovepress.com/testimonials.php> to read real quotes from published authors.

Submit your manuscript here: <https://www.dovepress.com/vascular-health-and-risk-management-journal>

Dovepress