

# Nitric oxide-releasing nanoparticles improve doxorubicin anticancer activity

Houman Alimoradi<sup>1,\*</sup>

Khaled Greish<sup>2,3,\*</sup>

Anita Barzegar-Fallah<sup>1</sup>

Lama Alshaibani<sup>2</sup>

Valeria Pittalà<sup>4</sup>

<sup>1</sup>Department of Pharmacology and Toxicology, University of Otago, Dunedin, New Zealand; <sup>2</sup>College of Medicine and Medical Sciences, Department of Molecular Medicine, and Nanomedicine Unit, Princess Al-Jawhara Centre for Molecular Medicine and Inherited Disorders, Arabian Gulf University, Manama, Kingdom of Bahrain; <sup>3</sup>Department of Oncology, Faculty of Medicine, Suez Canal University, Ismailia, Egypt; <sup>4</sup>Department of Drug Science, University of Catania, Catania, Italy

\*These authors contributed equally to this work

**Purpose:** Anticancer drug delivery systems are often limited by hurdles, such as off-target distribution, slow cellular internalization, limited lysosomal escape, and drug resistance. To overcome these limitations, we have developed a stable nitric oxide (NO)-releasing nanoparticle (polystyrene-maleic acid [SMA]-*tert*-dodecane S-nitrosothiol [tDodSNO]) with the aim of enhancing the anticancer properties of doxorubicin (Dox) and a Dox-loaded nanoparticle (SMA-Dox) carrier.

**Materials and methods:** Effects of SMA-tDodSNO and/or in combination with Dox or SMA-Dox on cell viability, apoptosis, mitochondrial membrane potential, lysosomal membrane permeability, tumor tissue, and tumor growth were studied using in vitro and in vivo model of triple-negative breast cancer (TNBC). In addition, the concentrations of SMA-Dox and Dox in combination with SMA-tDodSNO were measured in cells and tumor tissues.

**Results:** Combination of SMA-tDodSNO and Dox synergistically decreased cell viability and induced apoptosis in 4T1 (TNBC cells). Incubation of 4T1 cells with SMA-tDodSNO (40  $\mu$ M) significantly enhanced the cellular uptake of SMA-Dox and increased Dox concentration in the cells resulting in a twofold increase ( $P < 0.001$ ). Lysosomal membrane integrity, evaluated by acridine orange (AO) staining, was impaired by 40  $\mu$ M SMA-tDodSNO ( $P < 0.05$  vs control) and when combined with SMA-Dox, this effect was significantly potentiated ( $P < 0.001$  vs SMA-Dox). Subcutaneous administration of SMA-tDodSNO (1 mg/kg) to xenografted mice bearing 4T1 cells showed that SMA-tDodSNO alone caused a twofold decrease in the tumor size compared to the control group. SMA-tDodSNO in combination with SMA-Dox resulted in a statistically significant 4.7-fold reduction in the tumor volume ( $P < 0.001$  vs control), without causing significant toxicity as monitored through body weight loss.

**Conclusion:** Taken together, these results suggest that SMA-tDodSNO can be used as a successful strategy to increase the efficacy of Dox and SMA-Dox in a model of TNBC.

**Keywords:** biologic barriers, nanoparticles, nitric oxide, doxorubicin, synergistic cytotoxicity, SMA-tDodSNO

## Introduction

Targeted antitumor therapies supported by nanotechnology have emerged as attractive strategies to overcome the lack of selectivity of traditional chemotherapeutic drugs. Described as “a royal gate for targeted anticancer nanomedicines”,<sup>1</sup> the enhanced permeability and retention (EPR) effect of macromolecules is the main cause of passive targeting of various long-lasting pharmaceutical nanocarriers larger than 7 nm in solid tumors.<sup>2</sup> The EPR effect in tumors arises from the insufficient formation of tight junctions in the endothelium, leaky vasculature, slow venous return, and poor lymphatic clearance.<sup>3</sup> Animal studies have shown that nanocarriers can achieve three to ten times higher concentration of drugs at the tumor site with a concomitant reduction

Correspondence: Khaled Griesh  
College of Medicine and Medical Sciences,  
Department of Molecular Medicine, and  
Nanomedicine Unit, Princess Al-Jawhara  
Center for Molecular Road 2904,  
Building 293, Manama 329, Arabian Gulf  
University, Manama, Kingdom of Bahrain  
Email khaledfg@agu.edu.bh

of off-target side effects.<sup>2</sup> However, in clinical settings, the EPR effect does not always guarantee an efficient targeting of tumor tissues due to the heterogeneity of tumor cells, microenvironment, and several barriers preventing them reaching their targets in cancer cells.<sup>4,5</sup> In fact, nanoparticles (NPs) to reach the target should overcome the extracellular matrix (ECM), which is a semisolid barrier consisting of an interconnected network of collagen fibers intermingled with proteins. The higher rigidity of the ECM in most tumors compared to normal tissues hinders NP diffusion.<sup>6</sup> In addition, NPs cannot simply enter cells via diffusion; they are internalized through endocytic process, which is time and energy consuming, and this endocytic process can prevent the absorption of NPs carrying drugs acting inside the cells.<sup>7</sup> Finally, the payload efflux from the cells and multidrug resistance are major hurdles in the treatment of many cancers.<sup>8</sup> Besides the restricted uptake, the confinement of NPs in low-pH endosomal or lysosomal compartments and the reduced blood supply, leading to the presence of hypoxic areas in the central region of the tumor and in metastasis, can also negatively impact the efficacy of the treatments.<sup>9</sup> Strategies to enhance the EPR effect, aiming at increasing NPs' selective tumor targeting, include the modulation of the tumor microenvironment. Local administration of nitric oxide (NO) donors to tumors with the aim of increasing the blood flow has been tested clinically with favorable outcome.<sup>10</sup> However, limited NO payloads, short NO half-life, and the lack of organ or tissue specificity have restricted the utilization of NO in the area of anticancer management, despite their potential antitumoral effects.<sup>11</sup>

The aim of this paper is to investigate the effects of a stable NO-releasing compound loaded into styrene maleic acid nanomicelles on the anticancer properties of doxorubicin (Dox) in 4T1, a triple-negative breast cancer (TNBC) model. To this extent, we identified the NO-releasing *tert*-dodecane S-nitrosothiol (tDodSNO) as a stable NO-donor and encapsulated it into polystyrene-maleic acid (SMA) to formulate SMA-tDodSNO NPs. tDodSNO showed superior stability and NO release profile compared to commercially available NO donors (such as S-nitroso-N-acetylpenicillamine, S-nitrosoglutathione, and sodium nitroprusside) most probably due to its bulkiness and hydrophobicity.<sup>12,13</sup> However, its hydrophobicity may limit therapeutic applications. Encapsulation of tDodSNO into SMA makes it water soluble and physically protects it from premature tDodSNO breakdown as well as *trans*-nitrosation reactions with proteins and thiols, thereby inhibiting unspecific NO release. In addition, as NO plays an important role in vascular tone and permeability<sup>3</sup> and controls the cellular trafficking process of endocytosis

and exocytosis,<sup>14</sup> on this basis we hypothesized that SMA-tDodSNO can increase the efficacy of Dox in vitro and a Dox-loaded NP (SMA-Dox) formulation in vivo. Finally, therapeutic advantages of the new combination were tested in 4T1 syngeneic animal model of TNBC.

## Materials and methods

Dox was purchased from Lancix Chemicals Ltd. (Shanghai, China). Polystyrene-co-maleic anhydride terminated with cumene (SMA) as a polymeric mixture with an average molecular weight of 1,600 Da and all other chemicals were obtained from Sigma-Aldrich Co. (St Louis, MO, USA). MTT and all cell culture reagents were purchased from Thermo Fisher Scientific (Waltham, MA, USA). tDodSNO was synthesized as described before.<sup>12</sup>

## Synthesis of SMA-tDodSNO and SMA-Dox

SMA-tDodSNO and SMA-Dox were prepared according to the previously reported method.<sup>15</sup> Briefly, to create optimized loading of tDodSNO, or Dox in SMA NPs, escalating milligram ratios of the compounds dissolved in 2 mL DMSO were added dropwise to 10 mL of a vigorously stirring solution of SMA (10 mg/mL) at pH = 5.0, followed by addition of 80 mg EDAC, and solubilized in 2 mL of deionized water. During the addition of EDAC, the pH of the solution was maintained at 5 for 10 minutes, and then it was increased by NaOH 1 M to reach pH 11. Upon the appearance of a clear solution, the pH was adjusted back to 7.4 and purified using ultrafiltration system Pellicon XL filter 10 kDa (Merck Millipore, Billerica, MA, USA). The final concentrated product was freeze-dried to get the SMA-tDodSNO and SMA-Dox powder. To measure the loading of tDodSNO or Dox in the NPs, known weights of the NPs were dissolved in methanol, and the concentrations of SMA-tDodSNO and SMA-Dox were calculated using HPLC and UV-Vis spectroscopy at 480 nm, respectively.

## NPs size and zeta potential

NP size, dispersity, and zeta potential were quantified by dynamic and electrophoretic light scattering of 8 mg/mL solutions of the NPs at room temperature using a Malvern Zeta Sizer ZEN3600 (Malvern Instruments, Malvern, UK), and repeated in triplicate.

## Drug release from SMA-tDodSNO and SMA-Dox

The release of the payloads from the NPs was measured using a semipermeable dialysis membrane (14 kDa molecular

weight cutoff, Sigma-Aldrich Co.) as detailed before.<sup>15</sup> The concentration of tDodsNO in the solutions was measured using a BM-20Alite Prominence HPLC system (Shimadzu Corporation, Kyoto, Japan) on a reversed-phase Gemini 3  $\mu\text{m}$  C18, 110A, 150 $\times$ 2 mm column (Phenomenex Gemini-NX, North Shore City, Auckland, New Zealand) at 25°C. The mobile phase was methanol containing 0.3% trifluoroacetic acid, and the flow rate was 0.65 mL/min. A diode array detector was set at 341 nm and linked to Chromeleon software for data analysis. tDodsNO peak was detected at 341 nm with the retention time of 4.3 minutes.

## In vitro studies

Mouse 4T1 mammary carcinoma cells were used for in vitro studies. This cell line is one of the most aggressive phenotypes of cancer cells exhibiting aggressive phenotype similar to human TNBC.<sup>16</sup> Mouse 4T1 cells were purchased from ATCC, were cultured in RPMI-1640 medium supplemented with 5% heat-inactivated FBS, 100 U/mL penicillin, and 100  $\mu\text{g/mL}$  streptomycin (Thermo Fisher Scientific) and maintained in a humidified atmosphere with 5%  $\text{CO}_2$  and 95% air at 37°C.

### Cell viability assay and synergistic toxicity of SMA-tDodsNO and Dox

4T1 cells were seeded at 5,000 cells/well into 96-well plates and allowed to adhere overnight. Cells were then treated with various concentrations of SMA-tDodsNO (1–100  $\mu\text{M}$ ) and/or Dox (0.001–5  $\mu\text{M}$ ) and incubated for 48 hours. The medium was removed and 0.4 mg/mL MTT dissolved in media was added for 3 hours. After removing medium, the residual crystals were dissolved in 100  $\mu\text{L}$  DMSO and cell viability was calculated at  $\lambda=550$  nm.

### Cell cycle analysis

Two lakh 4T1 cells/well were seeded in six-well plates and allowed to adhere overnight prior to treatment with different concentrations of Dox (0.1  $\mu\text{M}$ ) and SMA-tDodsNO (10 and 40  $\mu\text{M}$ ). Forty-eight hours post treatment, cells were harvested, washed in cold PBS, followed by fixation with 4°C chilled 70% ethanol for 30 minutes. The fixed cells were washed twice with phosphate-citrate buffer ( $\text{Na}_2\text{HPO}_4$  192 mM, citric acid 4 mM), treated with 50  $\mu\text{L}$  of 100  $\mu\text{g/mL}$  RNase A, and finally stained with 200  $\mu\text{L}$  of 50  $\mu\text{g/mL}$  propidium iodide (PI) at 4°C. DNA content and percentage of cells in the different phases of the cell cycle were determined using FACScan flow cytometer (Becton Dickinson) and FlowJo software (TREE STAR, Inc., San Carlos, CA, USA). For all flow cytometry analysis, a minimum of 10,000 cells/sample were acquired and gated

to remove cell debris and doublets as shown in Figure S1. The main population of cells was separated from possible noises (side scatter area vs forward scatter area [FSC-A]), then single cells were selected using forward scatter height vs FSC-A plot (Figure S1).

### Apoptosis assay

Double fluorescence staining with Annexin V-FITC/PI was used to determine the percentage of cells actively undergoing apoptosis.<sup>17</sup> The cells were seeded and treated for 48 hours, as mentioned above. Cells were harvested, centrifuged at 2,000 rpm for 3 minutes (at 4°C), washed in cold PBS, and resuspended in 100  $\mu\text{L}$  per tube of Annexin V binding buffer (HEPES: 0.1 M, NaCl 1.4 M,  $\text{CaCl}_2$  25 mM, pH 7.4). Two microliters per tube of Annexin V conjugated Alexa Fluor 488 (Alexa 488) was added to the cell solution and incubated at room temperature for 15 minutes, protected from light. Four hundred microliters of the binding buffer and 5  $\mu\text{L}$  per tube of 50  $\mu\text{g/mL}$  PI were then added to the solution and kept on ice. The resulting samples were analyzed by FACScan. Annexin V-positive, PI-negative cells (Annexin V<sup>+</sup>/PI<sup>-</sup>), found in the lower right quadrant of the FACS dot plot, indicated early apoptotic population; Annexin V<sup>+</sup>/PI<sup>+</sup> cells, found in the upper right quadrant of the histogram, represented either late apoptotic or secondary necrotic populations.<sup>18</sup>

### Analysis of mitochondrial membrane potential

Changes in mitochondrial membrane potential were evaluated using the mitochondrial marker tetramethyl-rhodamine ethyl ester (TMRE).<sup>19,20</sup> Following SMA-tDodsNO (10 and 40  $\mu\text{M}$ ) and/or Dox (0.1  $\mu\text{M}$ ) treatments, cells were harvested by trypsinization, centrifuged at 2,000 rpm for 3 minutes, and resuspended in 500  $\mu\text{L}$  of media. Then, 2  $\mu\text{L}$  of 10  $\mu\text{M}$  TMRE was added to the suspensions of cells and incubated for 20 minutes at 37°C, protected from light, washed with PBS, and resuspended in media. The resulting samples were analyzed by FACScan cytometer.

### Effect of SMA-tDodsNO on the cellular uptake of SMA-Dox and Dox

To elucidate whether SMA-tDodsNO affects the cellular uptake of SMA-Dox, 4T1 cells in six-well plates (200,000 cells/well) were treated with SMA-tDodsNO (10 or 40  $\mu\text{M}$ ) and/or SMA-Dox (1  $\mu\text{M}$ ) in medium and incubated for 4 hours. The cells were then washed three times with pre-warmed fresh media and the fluorescent intensity of Dox in the cells was quantified by the Nikon Inverted Ti-E microscope (Coherent Instruments, Adelaide, Australia) and by

flow cytometry. To evaluate the effect of SMA-tDodSNO on the Dox intracellular concentration, 4T1 cells were treated with SMA-tDodSNO (10 and 40  $\mu$ M) and Dox (0.1  $\mu$ M) and incubated for 48 hours, then the cellular concentration of Dox was quantified.

### Determination of lysosomal membrane permeability

To evaluate whether the lysosomal membrane permeability was affected by SMA-tDodSNO treatment, acridine orange (AO) staining was used. 4T1 cells plated in six-well plates (200,000 cells/well) were treated in the medium for 4 hours with SMA-tDodSNO (10 and 40  $\mu$ M) and/or SMA-Dox (1  $\mu$ M), stained with 2  $\mu$ L of solution (dissolved in double distilled water [ddW] at a concentration of 1 mg/mL) for 15 minutes at 37°C and imaged by fluorescent microscopy. For flow cytometry analysis, after incubation with AO, the cells were removed from the plate with trypsin, collected in RPMI, then resuspended in the medium and analyzed by the FACScan.

### In vivo studies

All procedures involving the use of animals were conducted according to animal care policy of the Arabian Gulf University (AGU) and approved by the Research and Ethics Committee, AGU. To this end, BLAB/c female mice, 6 weeks old, weighing 22.4 $\pm$ 2.6 g, were housed in the laboratory animal care facility of the AGU, under a standardized condition of 12 hours light and dark cycle. 4T1 cells ( $2 \times 10^6$  cell) were implanted subcutaneously in the dorsal skin (right and left sides) of 6-week-old male BALB/c mice. When tumors reached 100 mm<sup>3</sup> in size, mice were injected with their respective test drugs. The in vivo study includes two sets of experiments. A) Evaluation of the influence of local administration of SMA-tDodSNO on SMA-Dox accumulation in tumor. To this extent, the xenografted mice were treated with either SMA-Dox or SMA-Dox+SMA-tDodSNO (four mice/group). In this experiment, SMA-Dox was injected intravenously via the tail at the dose of 5 mg/kg, and 1 mg/kg SMA-tDodSNO was injected intratumorally. Twenty four hours later, the mice were euthanized and tumors were excised and preserved in liquid nitrogen. B) Evaluation of the antitumor properties of SMA-tDodSNO alone and in combination with SMA-Dox. To this extent, the mice (5/group) were randomly distributed into four groups: 1) SMA-Dox, 2) SMA-tDodSNO, 3) SMA-Dox+SMA-tDodSNO, and 4) control group. The day of initial administration was set as day 0. At day 0 and day 8 of the study, 5 mg/kg SMA-Dox intravenous and/or SMA-tDodSNO 1 mg/kg intratumorally were injected.

The tumor volume was measured by manual caliber; the volume was estimated by using the formula  $V \text{ (mm}^3\text{)} = ((\text{transverse section})^2 \times (\text{longitudinal cross-section})/2)$ . Tumor volumes were normalized by using the initial tumor volume. The body weight of mice was measured and normalized daily for 14 days as an index of acute toxicity. Tumor tissues were thawed and cut into small pieces. For each 1 g of the tissue, 10 mL of 33% HCl in ethanol was added and the suspension was heated to 70°C in an oven for 30 minutes. The mixture was homogenized followed by sonication (for five intervals), vortex, and centrifugation (for three times). Finally, the supernatant was isolated from the pellet, and using a UV-VIS spectrometer, the absorbance of Dox was measured at 480 nm.

### Statistical analysis and quantification of synergism

The results were presented as the mean and SD of the mean. Half-maximal inhibitory concentrations ( $IC_{50}$ s) for cytotoxicity were interpolated from semilogarithmic plots of concentration–response curves using OriginPro 8 software. To quantify the interaction of the combinations (synergism and antagonism), the methodology of Chou and Talay was applied using CompuSyn 1.01 software (ComboSyn, Inc., Paramus, NJ, USA).<sup>21</sup> The results were expressed as a combination index (CI), where  $CI < 1$ ,  $CI = 1$ , and  $CI > 1$  were considered to indicate synergistic, additive, and antagonistic effects, respectively.<sup>21</sup> Statistical analysis was performed by GraphPad Prism, and all comparisons were carried out by a one-way ANOVA followed by the Bonferroni post hoc or independent sample *t*-test. The differences were considered significant if *P*-value  $< 0.05$ .

## Results

### Synthesis and characterization of SMA-tDodSNO and SMA-Dox

A summary of the characteristics of synthesized NPs, SMA-tDodSNO, and SMA-Dox, is reported in Table 1. The loading of the correspondent active principle in SMA-tDodSNO and SMA-Dox were 21.1 $\pm$ 1.4 and 13.1 $\pm$ 2.6% (w/w), respectively. SMA-tDodSNO and SMA-Dox had a mean diameter of 227 $\pm$ 37 and 34.3 $\pm$ 8.2 nm, respectively. Measured polydispersity index for SMA-tDodSNO and SMA-Dox was 0.211 $\pm$ 0.024 and 0.26 $\pm$ 0.15, respectively. The surface charge of both micellar systems in ddW was essentially neutral, with a mean zeta potential of  $-0.001 \pm 0.032$  mV for tDodSNO and  $+0.15 \pm 0.14$  mV for SMA-Dox (Table 1). In PBS (pH=7.4), the NPs were stable and limited release rate



**Table 1** Physicochemical characteristics of NPs, SMA-tDodSNO, and SMA-Dox<sup>a</sup>

Formulations	Loading (%)	Size (nm)	Charges (mV)	PDI	Release at 6 hours (%)
SMA-tDodSNO	21.1±1.4	227±37	-0.001±0.03	0.211±0.02	8.46±4.12
SMA-Dox	13.1±2.6	34.3±8.2	0.15±0.14	0.26±0.15	3.22±1.96

**Notes:** <sup>a</sup>Data are shown as mean values ± SD. Values are the mean of triplicate experiments.

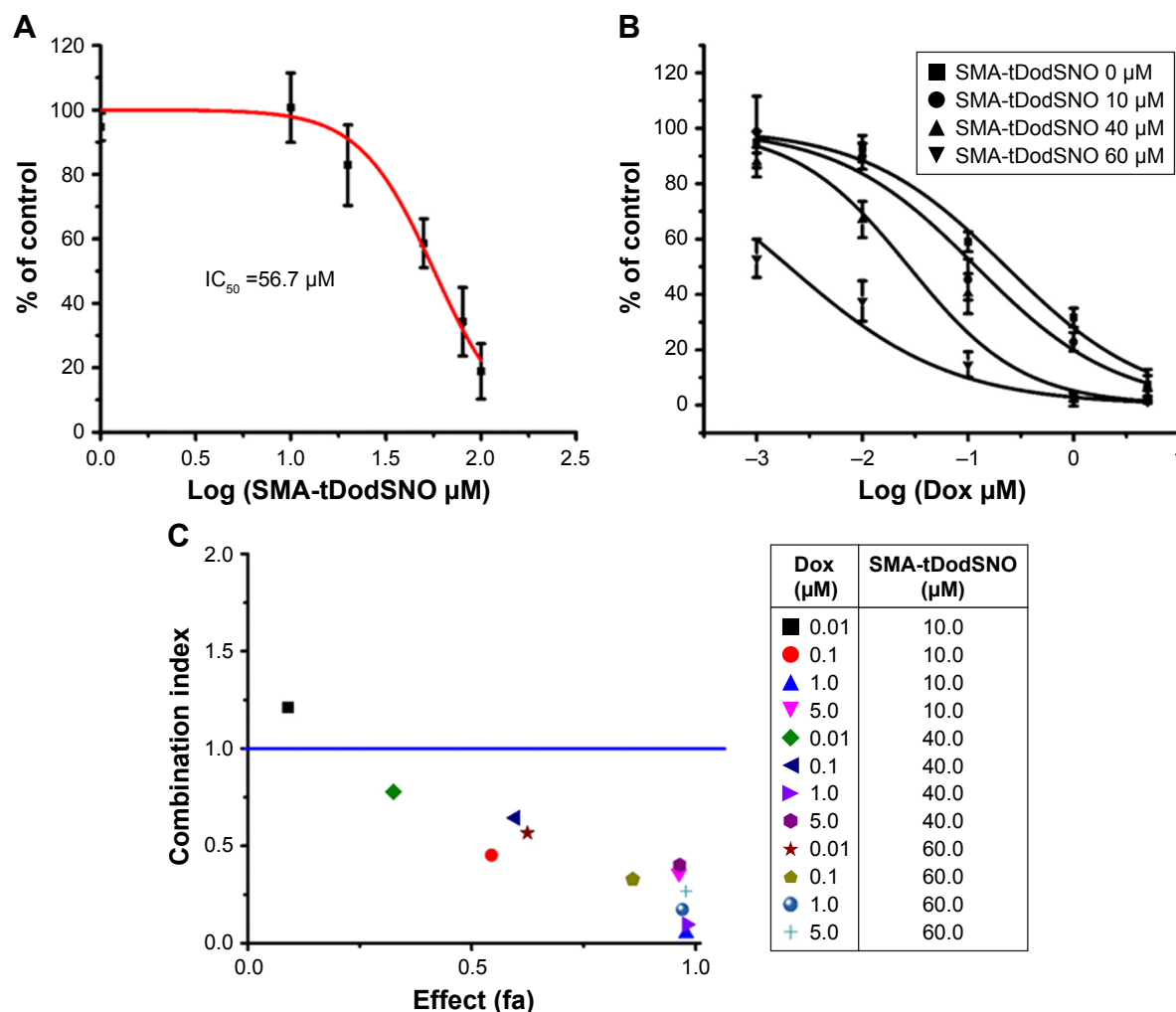
**Abbreviations:** Dox, doxorubicin; NP, nanoparticle; PDI, polydispersity index; SMA, polystyrene-maleic acid; tDodSNO, *tert*-dodecane S-nitrosothiol.

was detected within 6 hours (SMA-tDodSNO: 8.46%±4.12% and SMA-Dox: 3.22%±1.96%).

## Effect of the SMA-tDodSNO and Dox treatments on cell viability

Incubation of 4T1 cells with SMA-tDodSNO for 48 hours over a range of different concentrations showed

a concentration-dependent decrease in cell survival, with an  $IC_{50}$  calculated from the concentration–response curve of 56.7±4.9  $\mu$ M (Figure 1A). The combination of SMA-tDodSNO and Dox potentiated the cytotoxicity of Dox with a consequent  $IC_{50}$  shift from 205±34 to 1.79±0.7 nM ( $P<0.001$ ) when 60  $\mu$ M of SMA-tDodSNO was added to the cells (Figure 1B). Chou-Talalay analysis of the treatments



**Figure 1** The effect of SMA-tDodSNO and/or Dox on the 4T1 cell proliferation.

**Notes:** (A) SMA-tDodSNO showed cytotoxicity with an  $IC_{50}$  value of 56  $\mu$ M. (B) Addition of SMA-tDodSNO to Dox potentiated cell toxicity of Dox and the  $IC_{50}$  shifted from 205±34 to 1.79±0.51 nM ( $P<0.001$ ). (C) CI vs the cytotoxic effect of the treatments. The cytotoxicity of the cells treated with Dox (0.01, 0.1, 1, and 5  $\mu$ M) and/or SMA-tDodSNO (10, 40, and 60  $\mu$ M) was used for analysis of CI effect using Chou-Talalay methodology. Apart from combination at the lowest concentrations (Dox 0.01  $\mu$ M and SMA-tDodSNO 10  $\mu$ M), all other doses showed a synergistic activity.

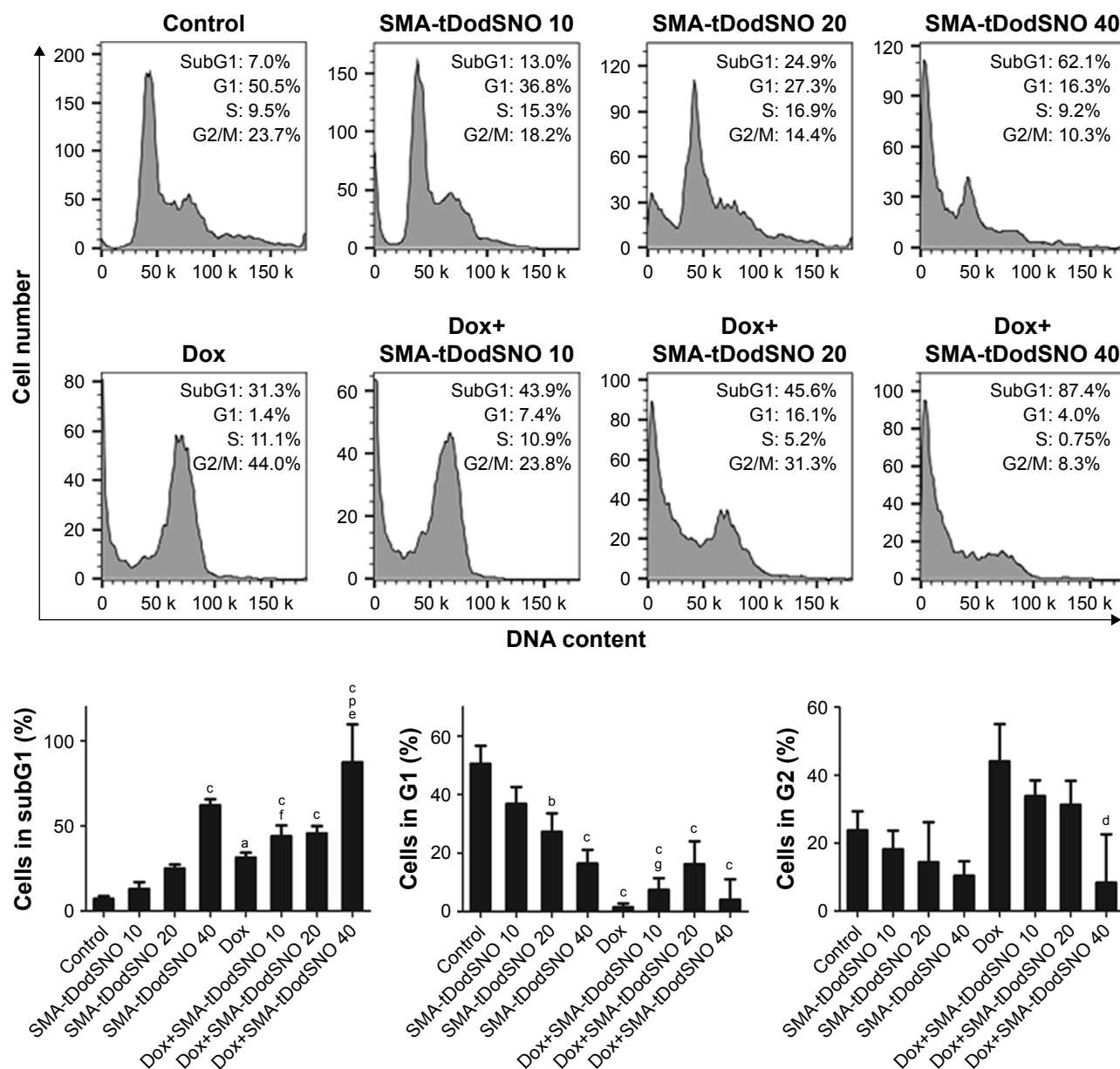
**Abbreviations:** CI, combination index; Dox, doxorubicin; SMA, polystyrene-maleic acid; tDodSNO, *tert*-dodecane S-nitrosothiol.

showed a CI <1, indicating a synergistic interaction between SMA-tDodSNO and Dox on 4T1 cell survival (Figure 1C). Apart from the lowest concentrations (Dox 0.01  $\mu$ M and SMA-tDodSNO 10  $\mu$ M), all other doses combination showed a synergistic effect.

## Effect of the SMA-tDodSNO and Dox treatments on cell cycle

To evaluate the mechanisms by which the different treatments inhibited 4T1 cell proliferation, cell cycle distribution

was analyzed by flow cytometry. The identification and gating of single cells by standard biparametric dot plot are given in Figure S1. Both Dox and 40  $\mu$ M SMA-tDodSNO significantly increased the population of cells in the subG1 phase ( $P<0.05$  and  $P<0.001$ , respectively) compared with untreated cells (Figure 2). When a combination of SMA-tDodSNO and Dox was used, the cells population in subG1 phase was 2.8-fold more than only Dox-treated cells ( $P<0.001$ ) and was significantly more than SMA-tDodSNO-treated cells ( $P<0.05$ ).



**Figure 2** Flow cytometric analysis of cell cycle parameters. 4T1 cells were incubated with Dox (0.1  $\mu$ M) and/or SMA-tDodSNO (10 or 40  $\mu$ M) for 48 h.

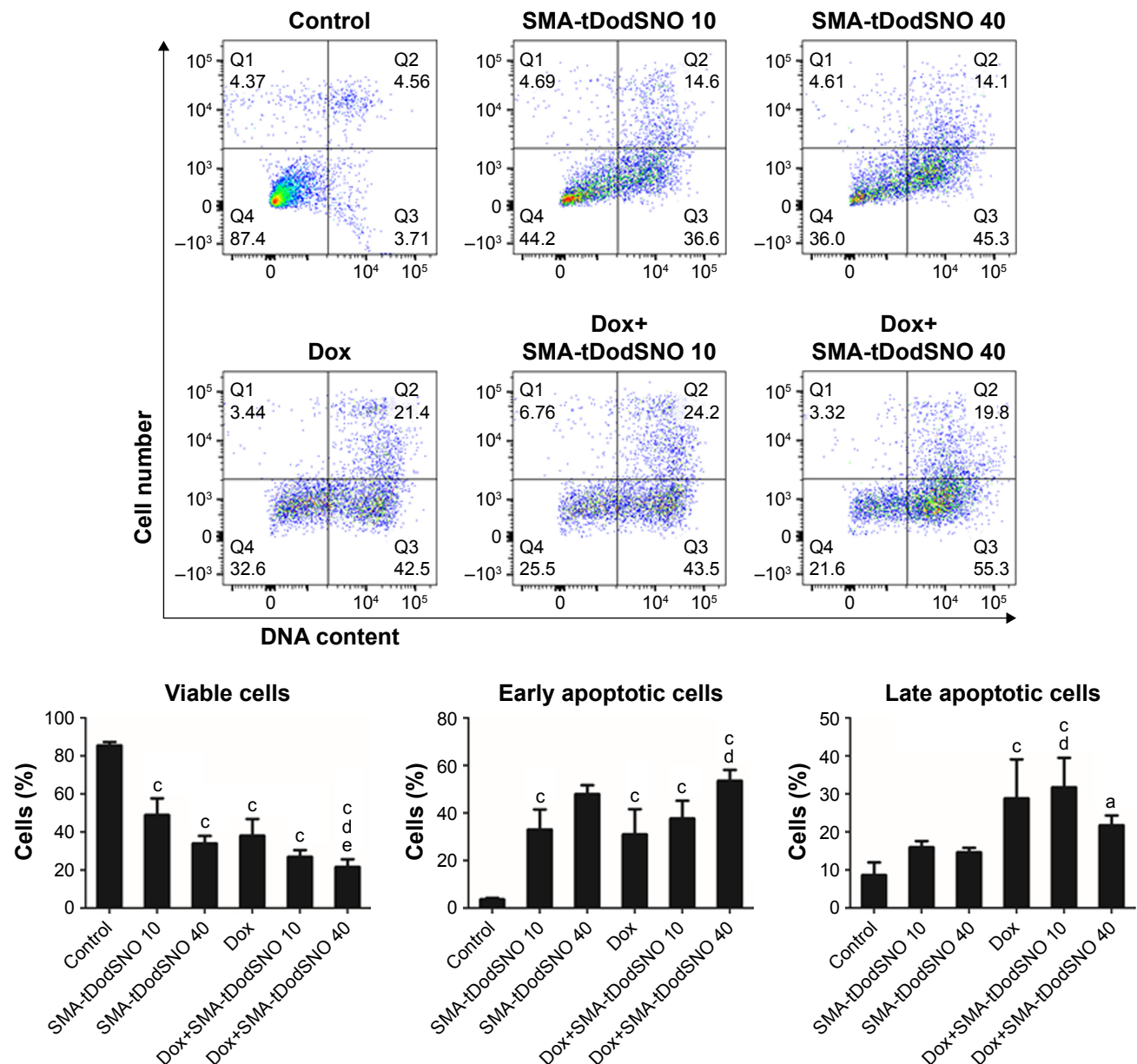
**Notes:** The treatments caused significant increase of the cell population in subG1 phase. Data are expressed as mean values  $\pm$  SD ( $n=3$ ).  $^aP<0.05$ ,  $^bP<0.05$ ,  $^cP<0.001$  vs control.  $^dP<0.05$ ,  $^eP<0.001$  vs Dox, and  $^fP<0.05$ ,  $^gP<0.01$ ,  $^hP<0.001$  vs respective SMA-tDodSNO group.

**Abbreviations:** Dox, doxorubicin; SMA, polystyrene-maleic acid; tDodSNO, tert-dodecane S-nitrosothiol.

## Effect of the SMA-tDodSNO and Dox treatments on apoptosis

The Annexin V and PI double labeling assay was used to determine<sup>18</sup> the extent of apoptosis following the treatments and the results are summarized in Figure 3. SMA-tDodSNO at concentrations of 10 and 40  $\mu\text{M}$  decreased the percentage of viable cells (Annexin V<sup>-</sup>/PI<sup>-</sup>) to approximately 48.8% $\pm$ 8.7% and 33.9% $\pm$ 3.8% ( $P<0.001$  vs control). Upon SMA-tDodSNO treatments, cells shifted to preapoptotic

(33% $\pm$ 8.4% and 47.1% $\pm$ 3.7%; 9- and 13-fold greater than that of control, respectively,  $P<0.001$ ) and necrotic states (15.9% $\pm$ 1.6% and 14.6% $\pm$ 1.4%, respectively; Figure 3). Similarly, Dox (0.1  $\mu\text{M}$ ) caused a significant reduction of viable cells to 38% $\pm$ 8.7% ( $P<0.05$ ) and enhancement in the population of apoptotic (8.5-fold,  $P<0.001$  vs control) and necrotic (3.3-fold,  $P<0.01$  vs control). When the cells were treated concurrently with Dox and SMA-tDodSNO (40  $\mu\text{M}$ ), the percentage of the alive cells dropped to 21.7% $\pm$ 3.9%,



**Figure 3** Flow cytometric analysis of apoptosis in 4T1 cells following incubation with Dox (0.1  $\mu\text{M}$ ) and/or SMA-tDodSNO (10 or 40  $\mu\text{M}$ ) for 48 hours and Annexin V/PI double staining.

**Notes:** The percentage of viable cells significantly decreased ( $P<0.001$ ) and apoptotic cell population (Annexin V<sup>+</sup>/PI<sup>+</sup>) significantly enhanced by Dox-SMA-tDodSNO 40  $\mu\text{M}$  ( $P<0.05$ ). Data are expressed as mean values  $\pm$  SD ( $n=3$ ). <sup>a</sup> $P<0.05$ , <sup>b</sup> $P<0.001$  vs control. <sup>c</sup> $P<0.05$  vs Dox and <sup>d</sup> $P<0.05$  vs respective SMA-tDodSNO group.

**Abbreviations:** Dox, doxorubicin; PI, propidium iodide; SMA, polystyrene-maleic acid; tDodSNO, tert-dodecane S-nitrosothiol.

which was significantly less than control ( $P<0.001$ ) and either treatment alone ( $P<0.05$ ). In addition, the population of apoptotic cells was significantly greater compared to Dox-treated cells ( $P<0.05$ ; Figure 3).

## Role of mitochondria in the cytotoxicity of SMA-tDodSNO and Dox treatments

Mitochondrial dysfunction has been reported as an early indicator of Dox and NO-induced apoptosis,<sup>22,23</sup> hence the effect of SMA-tDodSNO and Dox was evaluated on mitochondrial membrane potential. The TMRE histograms (Figure 4) show that both SMA-tDodSNO and Dox significantly shifted the fluorescence peak to the left. The percentage of TMRE<sup>+</sup> cells in the SMA-tDodSNO (40  $\mu$ M)- and Dox (0.1  $\mu$ M)-treated samples were  $16.9\pm9.5$  and  $35.8\pm3.2$ , respectively, which were significantly different from the control  $86.5\pm5.6$  ( $P<0.05$ ) indicating a loss in mitochondrial membrane potential.<sup>24</sup> Combination treatment shifted the peak further to the left, and the population of TMRE<sup>+</sup> cells was four times less than Dox-treated cells. However, the decrease in the fluorescent unit was not statistically significant compared to SMA-tDodSNO (40  $\mu$ M)-treated cells.

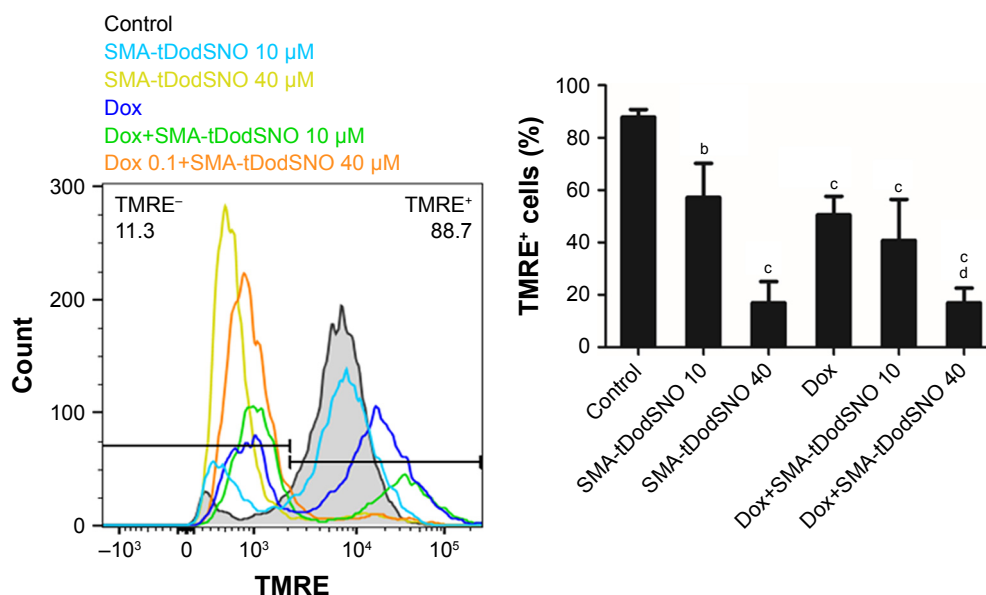
## Effect of SMA-tDodSNO on the endocytosis of SMA-Dox

Due to the size of SMA-Dox (mean diameter =34 nm), it cannot be internalized through diffusion, and their internalization depends on endocytosis.<sup>25</sup> To investigate the

facilitating role of SMA-tDodSNO in SMA-Dox uptake, we measured the fluorescent imaging of the cells. 4T1 cells were treated with either SMA-Dox or SMA-Dox+SMA-tDodSNO for 4 hours and, as reported in Figure 5, SMA-tDodSNO enhances the cellular uptake of SMA-Dox. Quantification of the fluorescent intensity showed that the addition of 40  $\mu$ M of SMA-tDodSNO to equimolar concentration of NPs was about twofold higher than in the cells treated with SMA-Dox alone (from  $48.6\pm5.3$  to  $79\pm10.1$ ,  $P<0.05$ ) (Figure 5). Higher number of cells uptaking Dox accompanied the higher intracellular concentrations after 48 hours (Figure 6). The percentage of cell population with high fluorescent intensity of Dox was significantly enhanced when cotreated with SMA-tDodSNO ( $P<0.001$ ) from  $38.3\pm4.9$  (Dox-treated cells) to  $72.5\pm4.0$  (Dox+SMA-tDodSNO 10  $\mu$ M) and  $89.1\pm2.3$  (Dox+SMA-tDodSNO 40  $\mu$ M; Figure 6).

## Effect of SMA-tDodSNO on lysosome membrane permeability

AO is a lipophilic fluorescent dye that is extensively used to stain acidic vesicular organelles including autolysosomes.<sup>26</sup> It readily diffuses into the cell compartments, and in an acidic pH of lysosomes is protonated and sequestered. The emission spectrum of protonated AO has a longer wavelength (AO is green and protonated AO is red), hence the intensity of the red fluorescence is proportional to the degree of acidity and/or the volume of the cellular acidic compartment.<sup>27</sup> Flow cytometry analysis was used to investigate the effect

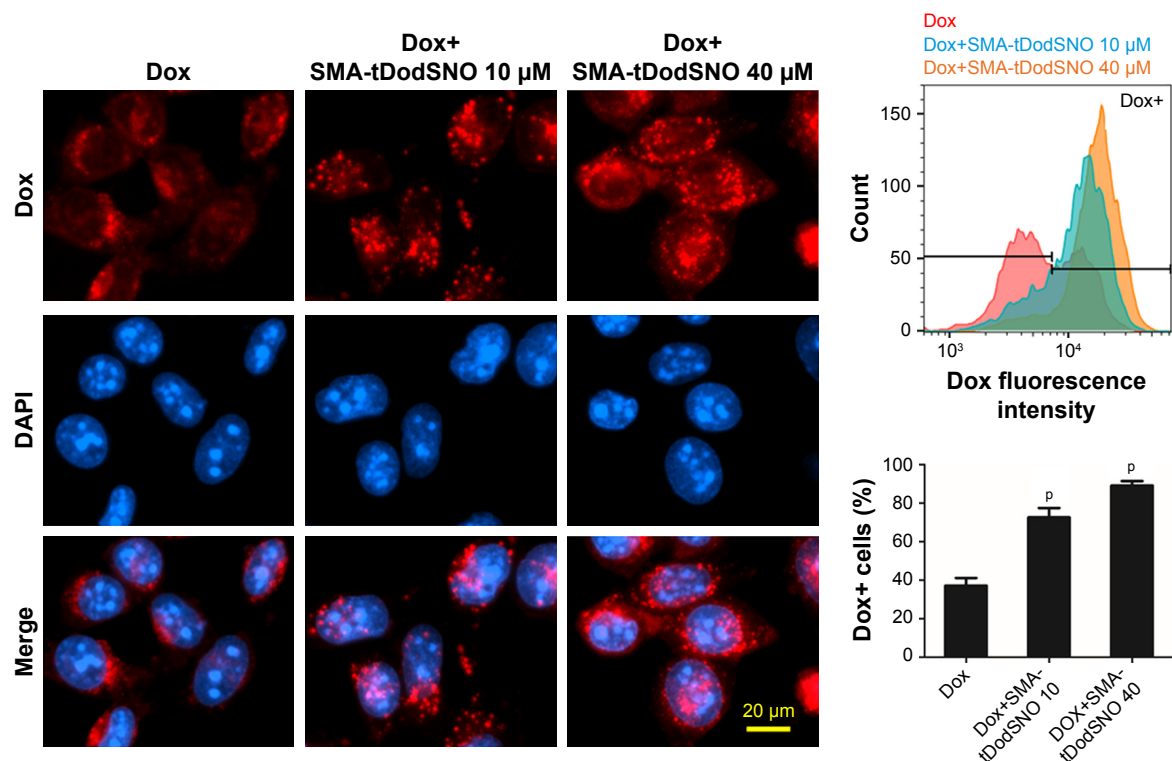
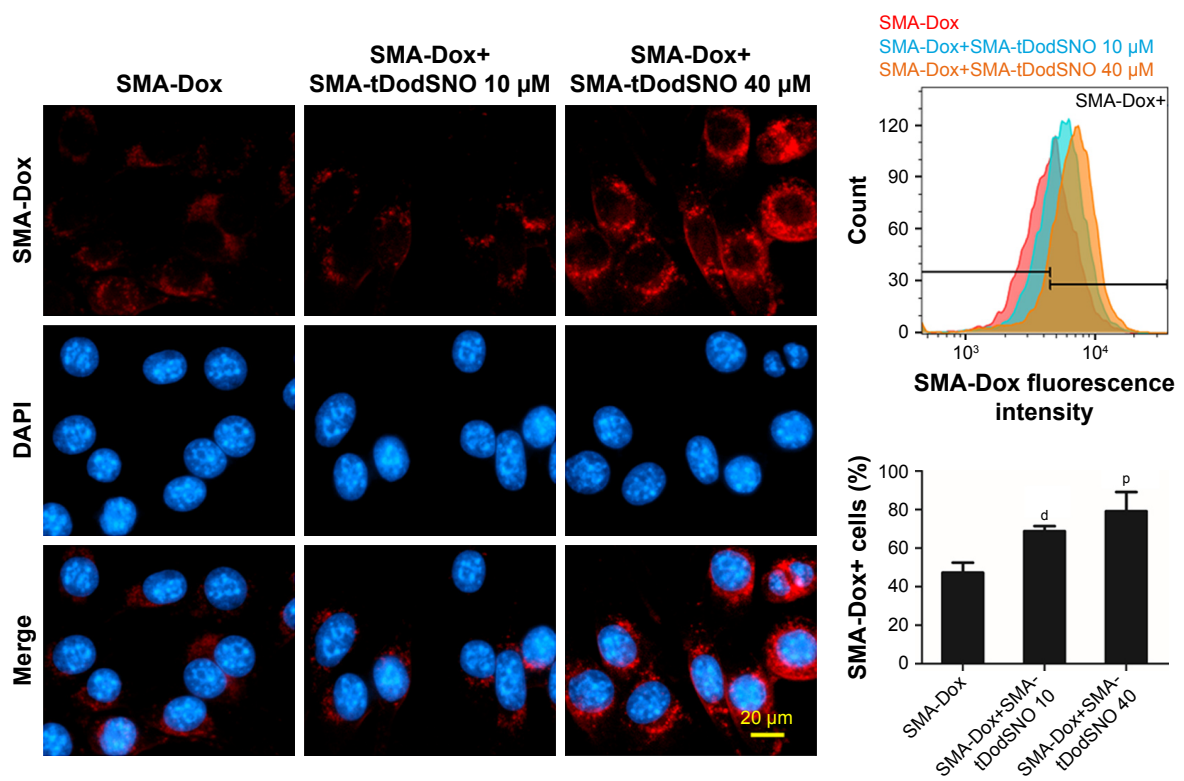


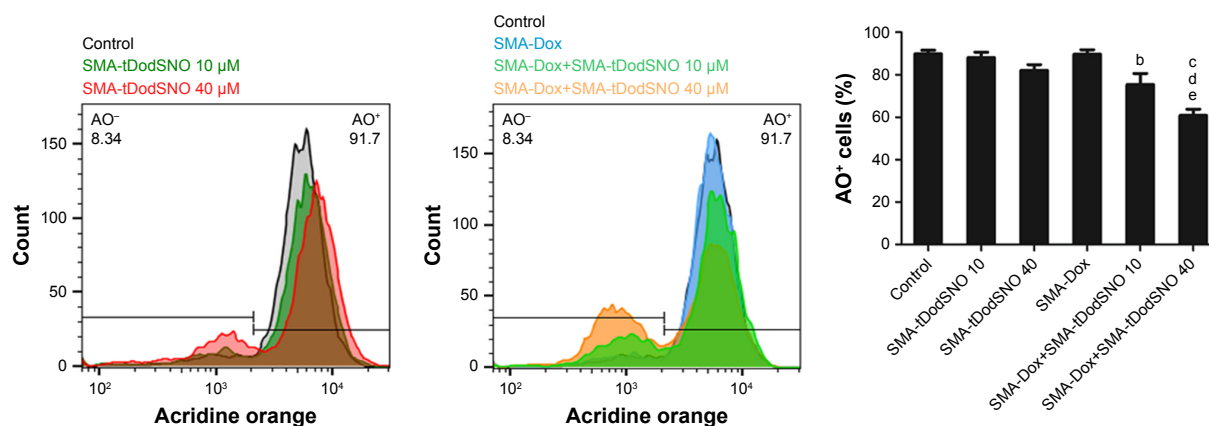
**Figure 4** Mitochondrial membrane depolarization was measured using TMRE staining of 4T1 cells treated with Dox (0.1  $\mu$ M) and/or SMA-tDodSNO (10 and 40  $\mu$ M) for 48 hours.

**Notes:** Data are expressed as mean values  $\pm$  SD ( $n=3$ ). <sup>b</sup> $P<0.01$ , <sup>c</sup> $P<0.001$  vs control, <sup>d</sup> $P<0.05$  vs Dox.

**Abbreviations:** Dox, doxorubicin; SMA, polystyrene-maleic acid; tDodSNO, tert-dodecane S-nitrosothiol; TMRE, tetramethyl-rhodamine ethyl ester.







**Figure 7** SMA-tDodSNO treatment impaired lysosomal membrane permeability.

**Notes:** The cells were treated with SMA-Dox (1  $\mu$ M) and/or SMA-tDodSNO (10 and 40  $\mu$ M) for 4 hours, then stained by AO. The cells with high fluorescent intensity were named as AO<sup>+</sup>. Treatment of the cells with SMA-tDodSNO (40  $\mu$ M) decreased significantly the percentage of AO<sup>+</sup> cells. In addition, the combination of SMA-tDodSNO and SMA-Dox resulted in a significant decrease in the AO<sup>+</sup> cells compared to either treatment alone. Data are expressed as mean values  $\pm$  SD (N=3). <sup>a</sup> $P < 0.05$  and <sup>b</sup> $P < 0.05$  vs SMA-Dox and SMA-tDodSNO (40  $\mu$ M), respectively.

**Abbreviations:** AO, acridine orange; Dox, doxorubicin; SMA, polystyrene-maleic acid; tDodSNO, *tert*-dodecane S-nitrosothiol.

of SMA-tDodSNO treatment on lysosome membrane permeability. Results showed the difference in the percentage of the cell population with a high intensity of AO (AO<sup>+</sup> cells). AO was significantly decreased when the cells were incubated with 40  $\mu$ M SMA-tDodSNO for 4 hours ( $P < 0.05$  vs control; Figure 7). Four-hour incubation with SMA-Dox (1  $\mu$ M) did not affect the lysosomal membrane permeability. However, the combination of SMA-tDodSNO and SMA-Dox resulted in a significant decrease in the population of AO<sup>+</sup> cells compared to control and either treatment alone (Figure 7). In addition, as reported in Figure S2, Chou-Talalay analysis of combined SMA-tDodSNO (10 and 40  $\mu$ M)- and Dox (1  $\mu$ M)-treated cells for 48 hours showed a synergistic reduction in the population of AO<sup>+</sup> cells (CI < 1, Figure S2). The highest effect was observed at Dox 1  $\mu$ M and SMA-tDodSNO 40  $\mu$ M. In control cells, fluorescence is limited and evenly disbursed throughout the cell. While in the SMA-tDodSNO-treated cells, the organelles are larger in size and localized in few parts of the cells (Figure 8).

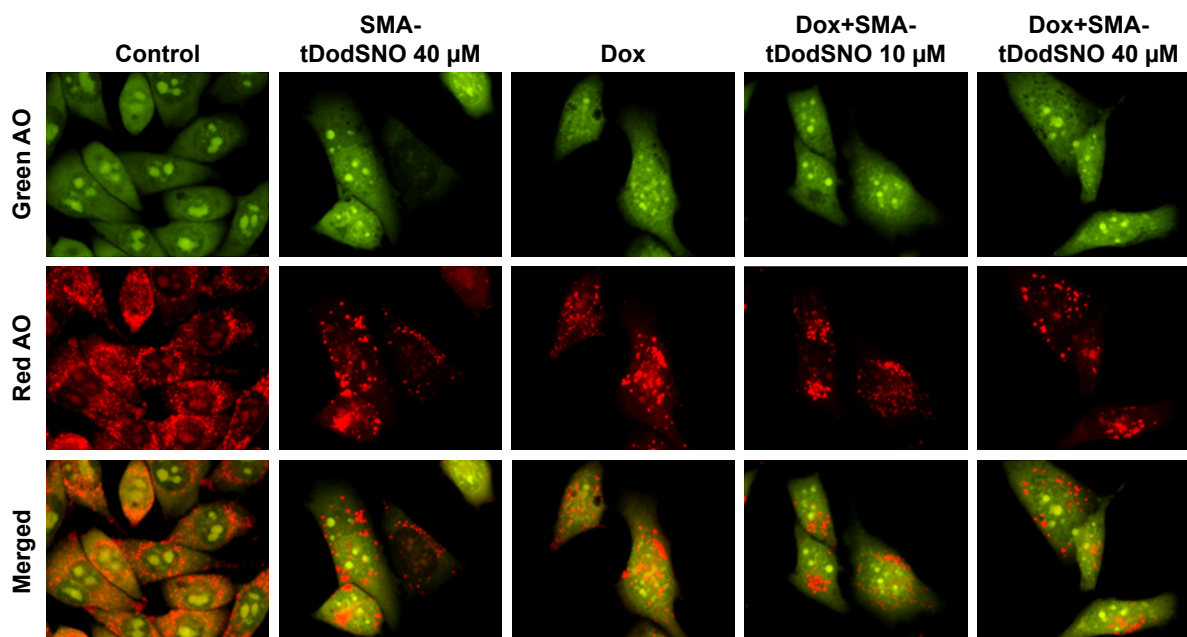
## Effect of SMA-tDodSNO and SMA-Dox on concentrations in tumor tissues, tumor growth, and animals' weight

We measured the concentration of SMA-Dox in tumor tissue upon treatment alone or in combination with SMA-tDodSNO. Local administration of SMA-tDodSNO (1 mg/kg) increased the tumor concentration of SMA-Dox 24 hours after the injections (1.65-fold of SMA-Dox alone); however, the difference did not reach statistical significance (Figure 9). The effect of the treatments on tumor growth was measured in vivo in a xenograft model of TNBC. After 17 days of tumor

inoculation, the control group and SMA-Dox-treated mice had equal rate of tumor progression (5.6-fold increase in the size compared to the day of drug injection D0) indicating that SMA-Dox on this tumor model at 5 mg/kg concentration was not effective (Figure 10A). Interestingly, SMA-tDodSNO alone resulted in a twofold reduction of the tumor size compared to the control group (244% vs 561% for control and 569% for SMA-Dox alone). Combined treatment of SMA-Dox and SMA-tDodSNO significantly arrested the tumor growth for the first 6 days of treatment (80% vs 375% for control;  $P < 0.05$ ) and at day 10 post injection, tumor volume was three times less than in the mice treated with SMA-Dox alone (195% vs 569% for SMA-Dox group; Figure 10A); however, the difference was not statistically significant (vs either SMA-tDodSNO or SMA-Dox alone). General toxicity in mice following the SMA-tDodSNO was assessed through the experiment. The treatments did not result in any significant weight loss over the study duration indicating the safety of the combination (Figure 10B).

## Discussion

Targeted anticancer therapies using NP-based drug carriers have emerged as an appealing approach to overcome the limitations associated with conventional drugs such as poor pharmacokinetics resulting in dose-limiting side-effects. Few Nano-based drugs reached clinical applications as in the case of Dox, where improvements in tumor targeting and decreased cardiotoxicity resulted in the Food and Drug Administration approval of Doxil® (Doxorubicin liposomal) for the treatment of Kaposi's sarcoma.<sup>28</sup> However, efficacious responses to Dox-loaded NPs (as well



**Figure 8** Effect of SMA-tDodsNO on lysosomal membrane permeability.

**Notes:** The cells were treated with Dox (0.1  $\mu$ M) and/or SMA-tDodsNO (10 and 40  $\mu$ M) for 48 hours, then stained by AO. In normal cells, the lysosomal compartments (red dots) have a small size and are evenly dispersed throughout the cell. In Dox- and SMA-tDodsNO-treated cells, the total red fluorescence of the cells decreased, and some of the fluorescence areas were larger in size and localized to few parts of the cells.

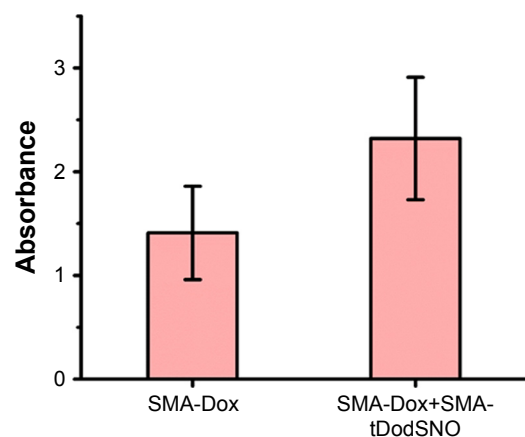
**Abbreviations:** AO, acridine orange; Dox, doxorubicin; SMA, polystyrene-maleic acid; tDodsNO, tert-dodecane S-nitrosothiol.

as other anticancer NPs) in tumors can be impaired by reticuloendothelial clearance, blood flow limitations, cellular internalization, escape from endosomal and lysosomal compartments, and drug efflux pumps.<sup>29,30</sup>

Recent experimental studies have shown that combination of NO donor drugs and Dox or Dox-loaded NPs potentiate the

anticancer effects of Dox.<sup>31–33</sup> However, currently available NO donors are unstable and possess limited NO payloads; therefore, they cannot be used for targeting tumors.<sup>11</sup> In addition, the mechanism by which NO donors improve the anticancer effects of Dox is not yet fully investigated.

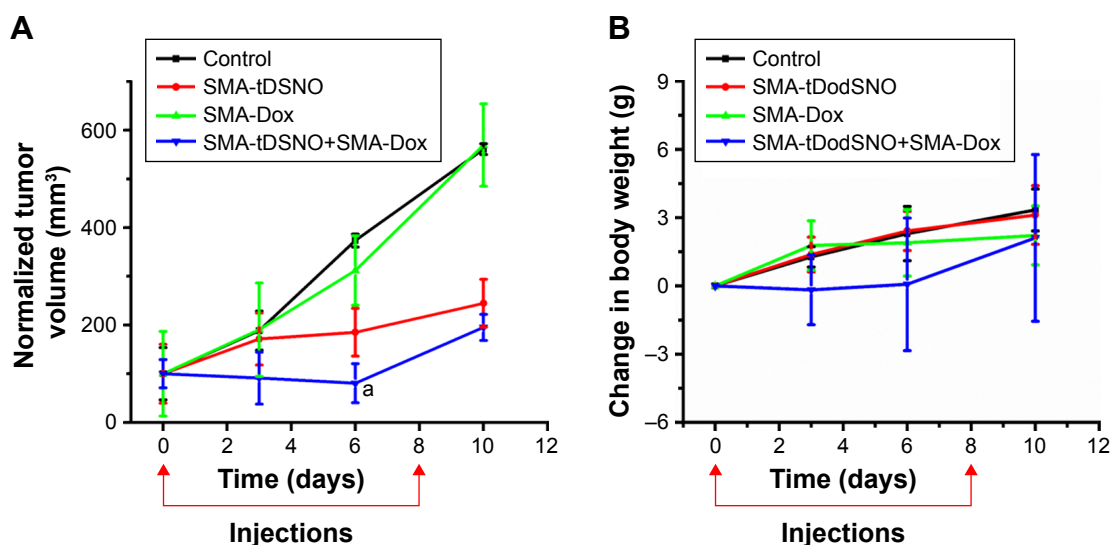
Here, we report that SMA-tDodsNO in combination with free Dox or SMA-Dox improves their anticancer properties. Combination treatments reduce cell viability and significantly enhanced early and late apoptosis in 4T1 cancer cells when compared to control as demonstrated by cell cycle analysis. Quantification of the cell population in the subG1 phase has been known as an easy way to score apoptotic events.<sup>18</sup> Upon incubation with a combination of SMA-tDodsNO (40  $\mu$ M) and Dox (0.1  $\mu$ M) for 48 hours, the majority of the cell population (87%) were in the subG1 phase. Annexin V/PI assay showed that around 80% of the treated cells were not stained by PI (PI<sup>-</sup>) indicating that they were alive.<sup>34</sup> Hence, it can be concluded that combined treatment of SMA-tDodsNO and Dox arrests the cells in SubG1 phase, which then results in apoptosis. In addition, as an early indicator of apoptosis, we studied the mitochondrial dysfunction.<sup>22,23</sup> Treatments with SMA-tDodsNO and/or Dox resulted in a significant depolarization of mitochondrial membrane, shown by the decrease in the TMRE fluorescence. This effect was potentiated when cells were treated with both treatments



**Figure 9** Effect of subcutaneous administration of SMA-tDodsNO on the concentration of SMA-Dox in tumor tissue.

**Notes:** To mice, intravenous SMA-Dox (5 mg/kg) or intravenous SMA-Dox (5 mg/kg)+ subcutaneous SMA-tDodsNO (1 mg/kg) were injected, and 24 hours later, the concentration of SMA-Dox in tumor tissue was evaluated. SMA-tDodsNO increased the tumor concentration of Dox; however, it was not statistically significant. Results are expressed as the mean  $\pm$  SD (n=4).

**Abbreviations:** Dox, doxorubicin; SMA, polystyrene-maleic acid; tDodsNO, tert-dodecane S-nitrosothiol.



**Figure 10** Effect of SMA-tDodSNO and SMA-Dox on tumor growth.

**Notes:** SMA-tDodSNO (1 mg/kg; subcutaneous) and SMA-Dox (5 mg/kg; intravenous) were administered alone and in combination to mice bearing mammary 4T1 tumors at days 0 and 8 of the study. The normalized tumor volume was evaluated as a function of time. The difference between the combination and either treatment alone (A) at day 6 was statistically significant ( $P=0.0406$  for SMA-tDodSNO, and vs SMA-Dox  $P=0.023$ ). (B) Body weight was evaluated as an indicator of general acute toxicity normalized. Data are expressed as mean  $\pm$  SD ( $n=5$ ).  $^aP<0.001$  vs control.

**Abbreviations:** Dox, doxorubicin; SMA, polystyrene-maleic acid; tDodSNO, tert-dodecane S-nitrosothiol.

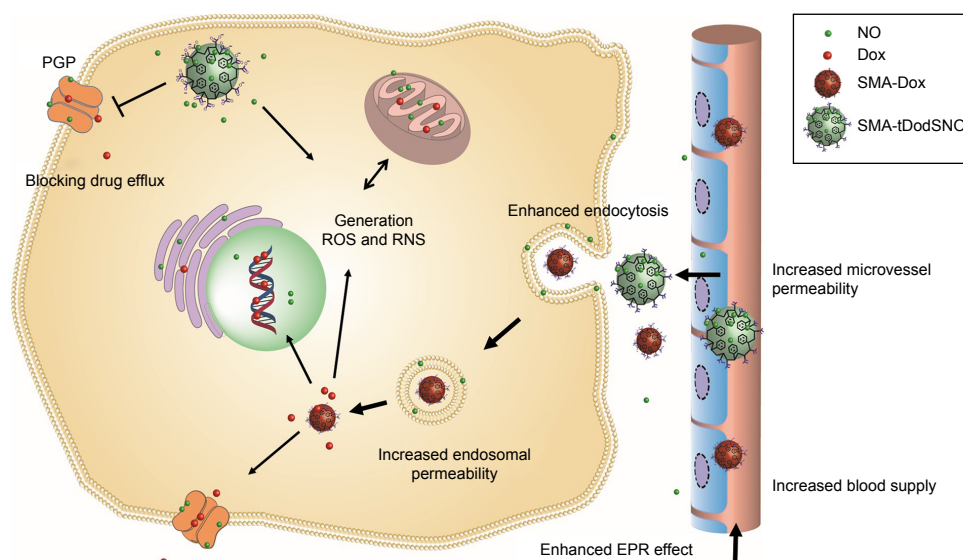
concurrently. Reactive oxygen species (ROS) and reactive nitrogen species (RNS) can significantly affect mitochondrial membrane permeability and guide cells to apoptosis and necrosis.<sup>35</sup> ROS and RNS generation plays important role in the cytotoxicity induced by Dox and NO donors.<sup>36,37</sup> Dox increases mitochondrial generation of  $O_2^{\cdot-}$ .<sup>38</sup> In addition, the reaction of NO with other free radicals such as  $O_2^{\cdot-}$  produces highly cytotoxic free radicals such as  $ONOO^-$ .<sup>39</sup> Therefore, combination of NO donor and Dox probably facilitates the production of such highly reactive species that cause damage at key intracellular sites and theoretically can reduce resistance to Dox.

Combination of SMA-Dox and SMA-tDodSNO in vitro remarkably enhanced the intracellular concentration of SMA-Dox within 4 hours compared to the SMA-Dox-treated cells. Cellular uptake of NPs occurs through endocytosis;<sup>40</sup> therefore, the enhanced SMA-Dox uptake could be due to the facilitated endocytosis. This is supported by earlier reports that showed that NO accelerates endocytosis by S-nitrosylation of dynamin, a GTPase enzyme that has a critical role in endocytic membrane fission events,<sup>41</sup> and increases its ability to hydrolyze GTP and cleave the endocytic vesicle free from the cell membrane.<sup>42</sup> Hence, in our model, NO-releasing NPs, such as SMA-tDodSNO, can be used to enhance membrane penetration of NPs. In addition, when SMA-tDodSNO was added to Dox, a twofold higher concentration of Dox in the cells was detected.<sup>43</sup> The increased intracellular concentration of Dox is in agreement

with previously reported studies and seems to be responsible for the synergistic cytotoxicity of NO donor drugs and Dox when used in combination.<sup>40,44</sup>

One limitation related to the intracellular delivery of NPs is the escape from endosomal and lysosomal compartments, as low-pH environment and enzymes are proved to be detrimental to nanodelivery systems cargo.<sup>29</sup> Therefore, we measured AO staining as a measure of lysosomal membrane integrity. The loss of lysosomal membrane integrity can be measured as the loss of red fluorescence of AO.<sup>45,46</sup> SMA-tDodSNO significantly decreased the percentage of the cell population with a high intensity of red fluorescence. In addition, when it combined with SMA-Dox or free Dox, its effect on lysosomal compartment was significantly potentiated. The effects of NO on lysosomes have been poorly investigated so far. Sarkar et al have shown that NO exhibits complex inhibitory effects on the autophagy process.<sup>47,48</sup> Following the loss of lysosome membrane integrity, the lysosomal cysteine proteases, cathepsins, penetrate into the cytoplasm and activate necrosis and apoptosis.<sup>49,50</sup> Our results suggest that the another possible mechanism for the synergistic anticancer activity of Dox and SMA-tDodSNO might be their synergistic destabilization of lysosomal compartments. This is in agreement with a recent study that has shown that supplementation of Dox with lysosome inhibitors such as bafilomycin A1 and chloroquine provided a more efficient anticancer effect in hepatic cancer cells by increasing lysosomal membrane permeability.<sup>51</sup>





**Figure 11** Possible mechanisms by which SMA-tDodsNO potentiates the anticancer efficacy of SMA-Dox and Dox.

**Notes:** Due to sustained NO release, the vessels can be dilated and blood supply to the tumor can be enhanced, rendering vessels permeable to SMA-Dox. Endocytosis of SMA-Dox could also be enhanced when combined with SMA-tDodsNO. Endosomal escape of SMA-Dox could be facilitated, given the higher endosomal membrane permeability caused by SMA-tDodsNO treatment. In addition, SMA-tDodsNO as an NO-releasing agent can sensitize cancer cells to chemotherapeutic drugs such as Dox.

**Abbreviations:** Dox, doxorubicin; EPR, enhanced permeability and retention; NO, nitric oxide; RNS, reactive nitrogen species; ROS, reactive nitrogen species; SMA, polystyrene-maleic acid; tDodsNO, *tert*-dodecane S-nitrosothiol.

Subcutaneous administration of SMA-tDodsNO (1 mg/mL) did not induce any sign of toxicity in mice and when administered with SMA-Dox, it increased the concentration of Dox in tumor tissue, even though the difference was not statistically significant. This is in agreement with earlier reports that showed that NO donors<sup>52–55</sup> and other vasodilators like sildenafil<sup>56</sup> enhance EPR effects in tumor tissues. In addition, our findings are in agreement with earlier reports showing that the NO donors inhibited drug resistance by decreasing the expression of P-glycoproteins in CT26 cell line.<sup>31</sup>

Treatments with SMA-tDodsNO *in vivo* resulted in a twofold decrease in tumor size, which supports the *in vitro* apoptotic and anticancer properties of the NPs. Herein, we hypothesize that the antitumor effects of SMA-tDodsNO could be due to the generation of nitrosative and oxidative stress in the cancer cells.<sup>57,58</sup> As expected, the highest antitumor effects were observed when SMA-tDodsNO and SMA-Dox were injected concurrently. It has been shown that NO sensitizes cancer cells to subtoxic chemo-immuno-cytotoxic agents by its direct inhibition of nuclear factor kappa B (NF- $\kappa$ B) and Snail (the NF- $\kappa$ B target gene).<sup>59</sup> Previous studies in 4T1 TNBC model using the free Dox at the same dose equivalence of SMA-Dox in this study failed to show any significant anticancer activity.<sup>56,60</sup>

Finally, in Figure 11, we schematically showed our hypothesis explaining the potential beneficial effects of

SMA-tDodsNO on the antitumor properties of Dox and SMA-Dox. SMA-tDodsNO could enhance blood supply and vessel permeability in tumor tissues, which results in the accumulation of SMA-Dox. In addition, SMA-tDodsNO can help to overcome some of the biologic barriers that hinder the delivery of SMA-Dox. Uptake studies showed that SMA-tDodsNO that increases the intracellular concentration of SMA-Dox may be favoring their endosomal escape. Attenuating the drug efflux from the cells or increasing its intracellular concentration with consequent generation of RNS and ROS would help to prevent drug resistance and improve the efficacy of anticancer drugs.

## Conclusion

In this work, we demonstrated that SMA-tDodsNO as a novel NO-releasing NP synergistically increased anticancer properties of Dox-loaded NPs through enhanced EPR effect, compromising endosomal membrane integrity, enhancing intracellular concentrations, and augmenting the overall drug concentrations in tumor tissues. Our work suggests that stable NO donor NPs such as SMA-tDodsNO can be used to overcome the biologic barriers, which hinder the efficacy of anticancer NPs.

## Acknowledgments

The authors would like to thank Dr Greg Giles (Otago University) for all the generous support he provided throughout



this work and Prof Sarah Hook (Otago University) for the use of FACScan flow cytometer.

## Author contributions

HA designed and conducted in vitro experiments, analyzed the data, and wrote the draft of the manuscript; KG conceived the idea, acquired the fund, supervised the work, designed and conducted the in vivo work, and contributed to writing the manuscript; AB-F conducted the flow cytometry work and analyzed its data; LA contributed to in vivo work; VP contributed to in vivo work and to writing and revising the manuscript. All authors contributed toward data analysis, drafting and revising the paper, gave approval for the final version to be published and agree to be accountable for all aspects of the work.

## Disclosure

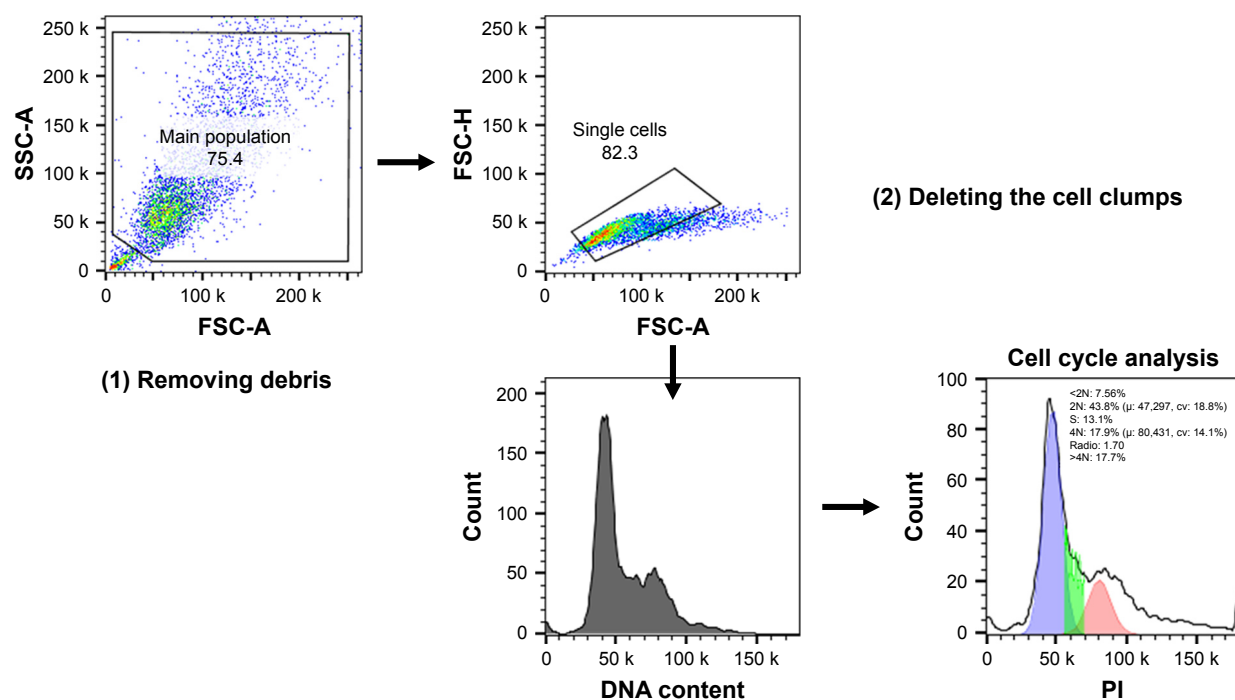
The authors report no conflicts of interest in this work.

## References

- Greish K. Enhanced permeability and retention of macromolecular drugs in solid tumors: a royal gate for targeted anticancer nanomedicines. *J Drug Target*. 2007;15(7–8):457–464.
- Maeda H, Nakamura H, Fang J. The EPR effect for macromolecular drug delivery to solid tumors: improvement of tumor uptake, lowering of systemic toxicity, and distinct tumor imaging in vivo. *Adv Drug Deliv Rev*. 2013;65(1):71–79.
- Maeda H, Wu J, Sawa T, Matsumura Y, Hori K. Tumor vascular permeability and the EPR effect in macromolecular therapeutics: a review. *J Control Release*. 2000;65(1–2):271–284.
- Alimoradi H, Matikonda SS, Gamble AB, Giles GI, Greish K. Hypoxia responsive drug delivery systems in tumor therapy. *Curr Pharm Des*. 2016;22(19):2808–2820.
- Barua S, Mitragotri S. Challenges associated with penetration of nanoparticles across cell and tissue barriers: a review of current status and future prospects. *Nano Today*. 2014;9(2):223–243.
- Netti PA, Berk DA, Swartz MA, Grodzinsky AJ, Jain RK. Role of extracellular matrix assembly in interstitial transport in solid tumors. *Cancer Res*. 2000;60(9):2497–2503.
- Bareford LM, Swaan PW. Endocytic mechanisms for targeted drug delivery. *Adv Drug Deliv Rev*. 2007;59(8):748–758.
- Yin Q, Shen J, Zhang Z, Yu H, Li Y. Reversal of multidrug resistance by stimuli-responsive drug delivery systems for therapy of tumor. *Adv Drug Deliv Rev*. 2013;65(13–14):1699–1715.
- Selby LI, Cortez-Jugo CM, Such GK, Johnston APR. Nanoescapology: progress toward understanding the endosomal escape of polymeric nanoparticles. *Wiley Interdiscip Rev Nanomed Nanobiotechnol*. 2017;9(5):e1452.
- Kumar V, Hong SY, Maciag AE, et al. Stabilization of the nitric oxide (NO) prodrugs and anticancer leads, PABA/NO and double JS-K, through incorporation into PEG-protected nanoparticles. *Mol Pharm*. 2010;7(1):291–298.
- Miller MR, Megson IL. Recent developments in nitric oxide donor drugs. *Br J Pharmacol*. 2007;151(3):305–321.
- Giles NM, Kumari S, Gang BP, Yuen CW, Billaud EM, Giles GI. The molecular design of S-nitrosothiols as photodynamic agents for controlled nitric oxide release. *Chem Biol Drug Des*. 2012;80(3):471–478.
- Kumari S, Sammut IA, Giles GI. The design of nitric oxide donor drugs: s-nitrosothiol tDodSNO is a superior photoactivated donor in comparison to GSNO and SNAP. *Eur J Pharmacol*. 2014;737:168–176.
- Lowenstein CJ. Nitric oxide regulation of protein trafficking in the cardiovascular system. *Cardiovasc Res*. 2007;75(2):240–246.
- Greish K, Sawa T, Fang J, Akaike T, Maeda H. SMA-doxorubicin, a new polymeric micellar drug for effective targeting to solid tumours. *J Control Release*. 2004;97(2):219–230.
- Kaur P, Nagaraja GM, Zheng H, et al. A mouse model for triple-negative breast cancer tumor-initiating cells (TNBC-TICs) exhibits similar aggressive phenotype to the human disease. *BMC Cancer*. 2012;12:120.
- Vermes I, Haanen C, Steffens-Nakken H, Reutelingsperger C. A novel assay for apoptosis. Flow cytometric detection of phosphatidylserine expression on early apoptotic cells using fluorescein labelled Annexin V. *J Immunol Methods*. 1995;184(1):39–51.
- Rello-Varona S, Herrero-Martín D, López-Alemany R, Muñoz-Pinedo C, Tirado OM. “(Not) all (dead) things share the same breath”: identification of cell death mechanisms in anticancer therapy. *Cancer Res*. 2015;75(6):913–917.
- Loew LM, Carrington W, Tuft RA, Fay FS. Physiological cytosolic Ca<sup>2+</sup> transients evoke concurrent mitochondrial depolarizations. *Proc Natl Acad Sci U S A*. 1994;91(26):12579–12583.
- Farkas DL, Wei MD, Febroriello P, Carson JH, Loew LM. Simultaneous imaging of cell and mitochondrial membrane potentials. *Biophys J*. 1989;56(6):1053–1069.
- Chou TC. Drug combination studies and their synergy quantification using the Chou-Talalay method. *Cancer Res*. 2010;70(2):440–446.
- Green PS, Leeuwenburgh C. Mitochondrial dysfunction is an early indicator of doxorubicin-induced apoptosis. *Biochim Biophys Acta*. 2002;1588(1):94–101.
- Doutheil J, Althausen S, Treiman M, Paschen W. Effect of nitric oxide on endoplasmic reticulum calcium homeostasis, protein synthesis and energy metabolism. *Cell Calcium*. 2000;27(2):107–115.
- Boss O, Samec S, Kühne F, et al. Uncoupling protein-3 expression in rodent skeletal muscle is modulated by food intake but not by changes in environmental temperature. *J Biol Chem*. 1998;273(1):5–8.
- Zhang S, Li J, Lykotrafitis G, Bao G, Suresh S. Size-dependent endocytosis of nanoparticles. *Adv Mater*. 2009;21:419–424.
- Pierzyńska-Mach A, Janowski PA, Dobrucki JW. Evaluation of acridine orange, LysoTracker Red, and quinacrine as fluorescent probes for long-term tracking of acidic vesicles. *Cytometry A*. 2014;85(8):729–737.
- Traganos F, Darzynkiewicz Z. Lysosomal proton pump activity: supravital cell staining with acridine orange differentiates leukocyte subpopulations. *Methods Cell Biol*. 1994;41:185–194.
- Barenholz Y. Doxil® – the first FDA-approved nano-drug: lessons learned. *J Control Release*. 2012;160(2):117–134.
- Blanco E, Shen H, Ferrari M. Principles of nanoparticle design for overcoming biological barriers to drug delivery. *Nat Biotechnol*. 2015;33(9):941–951.
- Riganti C, Miraglia E, Viarisio D, et al. Nitric oxide reverts the resistance to doxorubicin in human colon cancer cells by inhibiting the drug efflux. *Cancer Res*. 2005;65(2):516–525.
- Tan L, Huang R, Li X, Liu S, Shen YM. Controllable release of nitric oxide and doxorubicin from engineered nanospheres for synergistic tumor therapy. *Acta Biomater*. 2017;57:498–510.
- Song Q, Tan S, Zhuang X, et al. Nitric oxide releasing d- $\alpha$ -tocopheryl polyethylene glycol succinate for enhancing antitumor activity of doxorubicin. *Mol Pharm*. 2014;11(11):4118–4129.
- Kashfi K, Rigas B. Molecular targets of nitric-oxide-donating aspirin in cancer. *Biochem Soc Trans*. 2005;33(Pt 4):701–704.
- Rieger AM, Nelson KL, Konowalchuk JD, Barreda DR. Modified annexin V/propidium iodide apoptosis assay for accurate assessment of cell death. *J Vis Exp*. 2011;50:2597.
- Wink DA, Mitchell JB. Chemical biology of nitric oxide: insights into regulatory, cytotoxic, and cytoprotective mechanisms of nitric oxide. *Free Radic Biol Med*. 1998;25(4–5):434–456.
- Sen S, Kawahara B, Chaudhuri G. Mitochondrial-associated nitric oxide synthase activity inhibits cytochrome c oxidase: implications for breast cancer. *Free Radic Biol Med*. 2013;57:210–220.
- Mimnaugh EG, Trush MA, Bhatnagar M, Gram TE. Enhancement of reactive oxygen-dependent mitochondrial membrane lipid peroxidation by the anticancer drug adriamycin. *Biochem Pharmacol*. 1985;34(6):847–856.

38. Goormaghtigh E, Pollakis G, Ruyschaert JM. Mitochondrial membrane modifications induced by adriamycin-mediated electron transport. *Biochem Pharmacol*. 1983;32(5):889–893.
39. Brown GC. Nitric oxide and mitochondrial respiration. *Biochim Biophys Acta*. 1999;1411(2–3):351–369.
40. Riganti C, Miraglia E, Viariso D, et al. Nitric oxide reverts the resistance to doxorubicin in human colon cancer cells by inhibiting the drug efflux. *Cancer Res*. 2005;65(2):516–525.
41. Ferguson SM, De Camilli P. Dynamin, a membrane-remodelling GTPase. *Nat Rev Mol Cell Biol*. 2012;13(2):75–88.
42. Wang G, Moniri NH, Ozawa K, Stamler JS, Daaka Y. Nitric oxide regulates endocytosis by S-nitrosylation of dynamin. *Proc Natl Acad Sci U S A*. 2006;103(5):1295–1300.
43. Evans CJ, Phillips RM, Jones PF, et al. A mathematical model of doxorubicin penetration through multicellular layers. *J Theor Biol*. 2009;257(4):598–608.
44. Kim J, Yung BC, Kim WJ, Chen X. Combination of nitric oxide and drug delivery systems: tools for overcoming drug resistance in chemotherapy. *J Control Release*. 2017;263:223–230.
45. Petersen NH, Olsen OD, Groth-Pedersen L, et al. Transformation-associated changes in sphingolipid metabolism sensitize cells to lysosomal cell death induced by inhibitors of acid sphingomyelinase. *Cancer Cell*. 2013;24(3):379–393.
46. Kirkegaard T, Roth AG, Petersen NH, et al. Hsp70 stabilizes lysosomes and reverts Niemann-Pick disease-associated lysosomal pathology. *Nature*. 2010;463(7280):549–553.
47. Sarkar S, Korolchuk VI, Renna M, et al. Complex inhibitory effects of nitric oxide on autophagy. *Mol Cell*. 2011;43(1):19–32.
48. Yu H, Xiao Y, Jin L. A lysosome-targetable and two-photon fluorescent probe for monitoring endogenous and exogenous nitric oxide in living cells. *J Am Chem Soc*. 2012;134(42):17486–17489.
49. Repnik U, Stoka V, Turk V, Turk B. Lysosomes and lysosomal cathepsins in cell death. *Biochim Biophys Acta*. 2012;1824(1):22–33.
50. Kroemer G, Jäättelä M. Lysosomes and autophagy in cell death control. *Nat Rev Cancer*. 2005;5(11):886–897.
51. Li Y, Sun Y, Jing L, et al. Lysosome inhibitors enhance the chemotherapeutic activity of doxorubicin in HepG2 cells. *Chemotherapy*. 2017;62(2):85–93.
52. Kinoshita R, Ishima Y, Chuang VTG, et al. Improved anticancer effects of albumin-bound paclitaxel nanoparticle via augmentation of EPR effect and albumin-protein interactions using S-nitrosated human serum albumin dimer. *Biomaterials*. 2017;140:162–169.
53. Maeda H. Macromolecular therapeutics in cancer treatment: the EPR effect and beyond. *J Control Release*. 2012;164(2):138–144.
54. Ishima Y, Inoue A, Fang J, et al. Poly-S-nitrosated human albumin enhances the antitumor and antimetastasis effect of bevacizumab, partly by inhibiting autophagy through the generation of nitric oxide. *Cancer Sci*. 2015;106(2):194–200.
55. Ishima Y. Albumin-based nitric oxide traffic system for the treatment of intractable cancers. *Biol Pharm Bull*. 2017;40(2):128–134.
56. Greish K, Fateel M, Abdelghany S, Rachel N, Alimoradi H, Bakhiet M, et al. Sildenafil citrate improves the delivery and anticancer activity of doxorubicin formulations in a mouse model of breast cancer. *J Drug Target*. 2018;26(7):610–615.
57. Choudhari SK, Chaudhary M, Bagde S, Gadgil AR, Joshi V. Nitric oxide and cancer: a review. *World J Surg Oncol*. 2013;11:118.
58. Morikawa S, Baluk P, Kaidoh T, Haskell A, Jain RK, McDonald DM. Abnormalities in pericytes on blood vessels and endothelial sprouts in tumors. *Am J Pathol*. 2002;160(3):985–1000.
59. Bonavida B, Garban H. Nitric oxide-mediated sensitization of resistant tumor cells to apoptosis by chemo-immunotherapeutics. *Redox Biol*. 2015;6:486–494.
60. Greish K, Taurin S, Morsy MA. The effect of adjuvant therapy with TNF- $\alpha$  on animal model of triple-negative breast cancer. *Ther Deliv*. 2018;9(5):333–342.

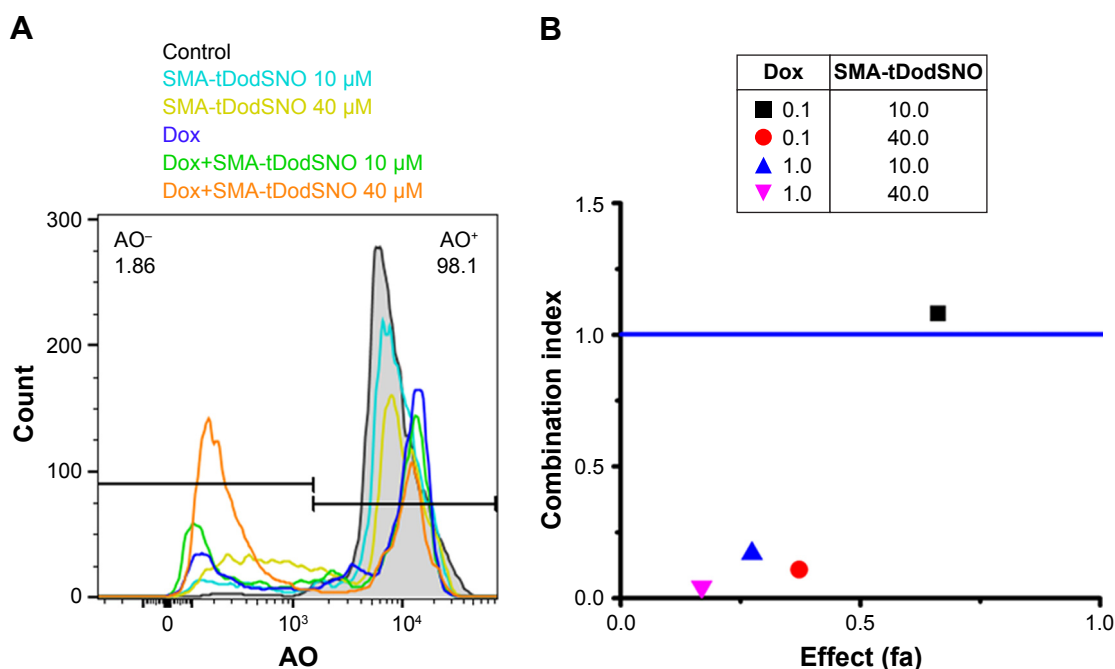
## Supplementary materials



**Figure S1** Identification and gating of single cells by standard biparametric dot plot.

**Notes:** (1) The main population of cells was separated from possible noises (SSC-A vs FSC-A), then (2) single cells were selected using FSC-H vs FSC-A plot. Plotting cell count vs DNA content (the PI intensity) showed atypical cell cycle in control group. The population of the cells colored in blue are in G1 phase, green is showing cells in synthesis phase, and red represents cells in G2 phase.

**Abbreviations:** FSC-A, forward scatter area; FSC-H, forward scatter height; PI, propidium iodide; SSC-A, side scatter area.



**Figure S2** (A) Flow cytometry spectrum of AO-stained cells and treated with free Dox (0.1  $\mu$ M) and/or SMA-tDodSNO (10 and 40  $\mu$ M). The percentage of the cell population with high fluorescent intensity (AO<sup>+</sup>) decreased following the treatments. (B) Chou-Talalay analysis showed a synergistic increase in the lysosomal permeability (decrease in the population of AO<sup>+</sup>) when the cells were treated with Dox (0.1 and 1  $\mu$ M) and SMA-tDodSNO (10 and 40  $\mu$ M) concurrently. The highest effect was observed at Dox 1  $\mu$ M and SMA-tDodSNO 40  $\mu$ M.

**Abbreviations:** AO, acridine orange; Dox, doxorubicin; SMA, polystyrene-maleic acid; tDodSNO, tert-dodecane S-nitrosothiol.

**International Journal of Nanomedicine****Dovepress****Publish your work in this journal**

The International Journal of Nanomedicine is an international, peer-reviewed journal focusing on the application of nanotechnology in diagnostics, therapeutics, and drug delivery systems throughout the biomedical field. This journal is indexed on PubMed Central, MedLine, CAS, SciSearch®, Current Contents®/Clinical Medicine,

Journal Citation Reports/Science Edition, EMBase, Scopus and the Elsevier Bibliographic databases. The manuscript management system is completely online and includes a very quick and fair peer-review system, which is all easy to use. Visit <http://www.dovepress.com/testimonials.php> to read real quotes from published authors.

Submit your manuscript here: <http://www.dovepress.com/international-journal-of-nanomedicine-journal>