

# Development And Validation Of A Simple Model For Detection Of Early Hepatocellular Carcinoma In A Liver Cirrhosis Cohort

This article was published in the following Dove Press journal:  
*Cancer Management and Research*

Tao Li<sup>1,\*</sup>  
Hongguang Li<sup>2,\*</sup>  
Aihua Wang<sup>3</sup>  
Xiaoyan Su<sup>1</sup>  
Jingfang Zhao<sup>1</sup>  
Yi Cui<sup>1</sup>  
Jun Liu<sup>4</sup>  
Jinhua Hu<sup>1</sup>

<sup>1</sup>Department of Gastroenterology, Shandong Provincial Hospital Affiliated to Shandong First Medical University, Jinan, People's Republic of China; <sup>2</sup>Shandong University, Department of Hepatobiliary Surgery, Shandong Provincial Hospital Affiliated to Shandong First Medical University, Jinan, People's Republic of China; <sup>3</sup>Department of Gastroenterology, Linyi People's Hospital, Linyi, Shandong, People's Republic of China; <sup>4</sup>Department of Liver Transplantation and Hepatobiliary Surgery, Shandong Provincial Hospital Affiliated to Shandong First Medical University, Jinan, People's Republic of China

\*These authors contributed equally to this work

Correspondence: Jinhua Hu  
Department of Gastroenterology,  
Provincial Hospital Affiliated to Shandong  
University, 324, Jing 5 Road, Ji'nan  
250021, Shandong Province, People's  
Republic of China  
Tel +86-531-68773299  
Email 15665783658@163.com

Jun Liu  
Department of Liver Transplantation and  
Hepatobiliary Surgery, Shandong  
Provincial Hospital Affiliated to Shandong  
First Medical University, Jing 5 Road, Jinan,  
People's Republic of China  
Tel +86-531-68773299  
Email dr\_liujun1967@yeah.net

**Aim:** We aimed to develop a simple model combining protein induced by vitamin K antagonist-II (PIVKA-II) and alpha-fetoprotein (AFP) to detect early hepatocellular carcinoma (HCC) in liver cirrhosis (LC) patients.

**Method:** One hundred and sixty-nine newly diagnosed early HCC patients and 242 LC patients without HCC were enrolled in the current case-control study. All subjects were randomly divided into analysis group and validation group. Serum levels of PIVKA-II, AFP and other laboratory parameters were detected. Chi-squared test, *t*-test and logistic regression were employed in statistical analysis.

**Results:** PIVKA-II level in early HCC was significantly higher than that in LC (90.97 mAU/mL vs 18.00 mAU/mL,  $P < 0.01$ ), as well as AFP level (15.00 ng/mL vs 2.00 ng/mL,  $P < 0.01$ ) in analysis groups. Multivariate analysis showed that PIVKA-II, AFP, gender, and age were independent risk factors for early HCC detection among LC patients. A logistic regression model and a simple model combining PIVKA and AFP were conducted to detect early HCC. The ROC curve showed that among analysis groups, the area under the ROC curve (AUROC) of the logistic regression model and the simple model were 0.96 (95% CI 0.94–0.98) and 0.94 (95% CI 0.92–0.97), respectively. At a cut-off value of 56.03 the sensitivity and specificity of the simple model were 81.1% and 91.4%, respectively. In the validation group, the sensitivity and specificity of the simple model was 82.4% and 94.2%, respectively. The two models are comparable statistically for early HCC detection, but the logistic regression requires complex calculation.

**Conclusion:** The present study indicates that the simple model combining PIVKA-II and AFP has comparable diagnostic efficiency in contrast to the logistic model but is easy to use clinically. It might be helpful for early HCC detection among liver cirrhosis patients.

**Keywords:** hepatocellular carcinoma, PIVKA-II, AFP, liver cirrhosis

## Introduction

Hepatocellular carcinoma (HCC) is the sixth most common cancer and the second most common cause of cancer mortality world-wide. It usually develops from chronic liver diseases such as chronic hepatitis and cirrhosis.<sup>1,2</sup> Despite continuous improvement in recent years, the overall one-year and overall five-year survival rates remain at 47% and 20%, respectively, which may be due to the advanced stage at the time of diagnosis.<sup>1,3</sup> On the contrary, the median survival of HCC diagnosed at early stage could achieve about 70% at 5 years treated with surgical resection.<sup>4</sup>

In order to detect early HCC among liver cirrhosis patients, a semi-annual surveillance program with abdominal ultrasound (US) and serum alpha-fetoprotein

(AFP) level were recommended.<sup>5,6</sup> For that, at an early stage HCC patients could achieve five-year survival rates of 70% with liver resection, while those with advanced or late stage such as BCLC C stage are not eligible for resection and only have a median survival of less than one year.<sup>4,7</sup> However, it is difficult to detect early HCC by US examination due to its complicated background in cirrhotic liver, and the sensitivity of US in HCC detection was only 63% in liver cirrhosis patients according to a meta-analysis study.<sup>8,9</sup> For another, a number of HCC patients are AFP-negative and serum AFP level has limited sensitivity for the diagnosis of early HCC, as small, well-differentiated HCC is frequently accompanied by normal serum AFP level.<sup>10</sup> At the commonly used cut-off (20 ng/mL), the sensitivity of AFP is unsatisfactory, especially for the detection of early HCC.<sup>11</sup> Therefore, more biomarkers of early HCC are needed to complement US and AFP.

Protein induced by vitamin K antagonist-II (PIVKA-II), also known as Des- $\gamma$ -carboxyprothrombin (DCP), is an abnormal prothrombin protein produced by HCC cells, and has been found to possess several biological activities in the development of HCC.<sup>12</sup> For instance, PIVKA-II could bind with cellular mesenchymal-epithelial transition factor (c-Met), which is an initial event in the progression of HCC.<sup>13</sup> Moreover, PIVKA-II plays an important role in angiogenesis of HCC through the activation of the KDR-PLC- $\gamma$ -MAPK signaling pathway.<sup>14,15</sup> According to a recent study on early HCC in France, PIVKA-II demonstrated more efficient than AFP in the diagnosis of early HCC and could be used as a predictor of microvascular invasion (MVI).<sup>16</sup> Moreover, in another research in China, PIVKA-II exhibited the best diagnostic performance in the early diagnosis of HCC among alpha-fetoprotein (AFP), lens culinaris agglutinin-reactive AFP (AFP-L3), squamous cell carcinoma antigen, and centromere protein F autoantibody.<sup>17</sup> Therefore, the Japan Society of Hepatology (JSH) recommends PIVKA-II as an important surveillance method for HCC in at-risk populations such as liver cirrhosis and chronic hepatitis B (CHB) patients.<sup>18,19</sup>

Based upon the above findings, we hypothesized that PIVKA-II may play a critical role in early HCC detection among liver cirrhosis (LC) patients. In order to verify the hypothesis, we investigated the diagnostic value of PIVKA-II and constructed two models combining PIVKA-II and AFP to detect early HCC among patients with LC.

## Patients And Methods

### Patients

Between October 2017 and March 2019, a total of 411 consecutive patients with early HCC and LC were enrolled in this study. HCC diagnosis was based on pathology or typical radiologic results of HCC on two dynamic image examinations or one dynamic technique with serum AFP level  $\geq 200$  ng/mL. Early HCC was diagnosed with the BCLC staging system, which was defined as a single lesion between 2 and 5 cm, or  $\leq 3$  lesions each  $\leq 3$  cm.<sup>20,21</sup> LC was diagnosed by histology or on clinical findings with abdominal US, CT and magnetic resonance imaging (MRI) features of blunted, nodular liver edge accompanied by splenomegaly and esophageal varices. Clinicopathological and laboratory data were obtained from all subjects after written informed consents were obtained.

The study protocol is consistent with the ethical guidelines of the 1975 Declaration of Helsinki and it was approved by the ethical committee of Shandong Provincial Hospital affiliated to Shandong First Medical University. Written informed consent was obtained from each subject.

### Serum Sample Collection And Assays

Peripheral blood samples were collected from each subject right before surgeries or other treatments, followed by spinning and storage at  $-80^{\circ}\text{C}$  until laboratory tests. PIVKA-II serum levels were detected with Lumipulse G PIVKA-II reagent kits (FUJIREBIO Inc., Japan) on a LUMI-PULSE g1200 automatic immune analyzer according to the manufacturer's manual.

### Development Of Logistic Regression Model

A formula to detect early HCC in LC patients was developed based on the subjects of the analysis group. The standard logistic regression formula is:

$\text{Logit}(\text{StexP}) = \beta_0 + \beta_1 X_1 + \beta_2 X_2 + \dots + \beta_n X_n$ . "P" is the estimated probability of early HCC in the LC cohort, while "n" is the number of influence factors, " $\beta$ " represents the influence coefficient, "X" is the influence factor, and " $\beta_0$ " is a constant.

### Statistical Analysis

Continuous variables with normal distribution examined by Kolmogorov-Smirnov test are presented as mean  $\pm$  standard deviation and were compared using Student's *t*-test, while

categorical variables are expressed in absolute values and compared with the chi-square test. Logistic regression analysis was performed to detect independent variables of risk factors for early HCC detection. Receiver operating characteristic (ROC) curve analysis was used to measure the diagnostic accuracy of developed models for early HCC detection in LC patients. Statistical analysis was performed using SPSS version 21.0 (SPSS, Chicago, Illinois), Prism6 (GraphPad software, La Jolla, California), and R software (version 3.6.1; <http://www.Rproject.org>). The package used in R was rms. Statistical analysis was tested on two-sided settings and  $P < 0.05$  was considered as statistically significant.

## Results

### Baseline Characteristics Of All Subjects

One hundred and sixty-nine newly diagnosed early HCC patients with LC and 242 LC patients without HCC were enrolled in the present study. The baseline characteristics of all patients are summarized in Table 1. The average age was 54.34 years, and 72.51% of the patients were male. All HCC patients were BCLC stage 0-A4, with Child-Pugh A-B.

### Higher PIVKA-II And AFP Levels Were Detected In Early HCC Than In LC Patients

The characteristics of the analysis group are shown in Table 2. Elevated serum PIVKA-II and AFP levels were detected in early HCC patients compared with LC patients in the analysis group. The serum level of PIVKA-II among early HCC patients was 90.97 (9.7–30,766.38) mAU/mL, significantly higher than that of the LC patients 18 (3.49–626.34) mAU/mL ( $P < 0.01$ ) in the analysis group (Figure 1). The serum level of AFP among early HCC patients was 15 (0.9–19,549.1) ng/mL, significantly higher than that of the LC patients [2.00 (0.6–121.8) ng/mL ( $P < 0.01$ ) in the analysis group] (Figure 1).

Univariate analysis showed that a serum PIVKA-II level higher than 29.72 mAU/mL (OR = 43.74, 95% CI 15.53–123.19) and a serum AFP level higher than 4.05 ng/mL (OR = 15.59, 95% CI 7.16–33.95) were risk factors for diagnosis of early HCC among LC patients after logarithmic transformation. According to the ROC curve, PIVKA-II presented a similar diagnostic value compared with AFP in discriminating early HCC among LC patients with the AUROC of 0.89 (95% CI 0.85–0.93) and 0.90 (95% CI 0.85–0.94),

**Table 1** Baseline Characteristics Of The Study Population

Variables	All Patients	Analysis Group	Validation Group	P value
Sex F/M	113/298	68/166	45/132	0.44
Age (years)	54.34±10.83	54.37±10.55	54.32±11.23	0.43
ALT	32 (4–1138)	33.5 (6–1138)	31 (4–547)	0.58
AST	36 (10–1217)	35 (10–1217)	38 (13–427)	0.15
GGT	34 (7–1082)	32 (7–1082)	37 (11–304)	0.14
TbIL	22.3 (6.3–573.5)	22.42 (6.3–133)	22.2 (8–573.5)	0.87
ALB	35.64±6.28	35.55±6.06	35.76±6.57	0.11
D-Dimer	0.7 (0.05–28.26)	0.8 (0.1–27.4)	0.6 (0.05–28.26)	0.26
PTA	73.1±16.67	71.88±17.09	74.7±16.02	0.16
PLT (×10 <sup>9</sup> /L)	112.12±82.37	107.99±75.02	117.59±91.13	0.15
AFP	3.3 (0.5–19,549.10)	2.95 (0.60–19,549.10)	3.9 (0.50–7679.70)	0.11
PIVKA-II	25.87 (3.49–30,766.38)	25.18 (3.49–30,766.38)	27.96 (4.40–26,785.97)	0.52
Child-Pugh grade				
A	290	173	117	0.09
B	121	61	60	
Tumor number				
Solitary	156	88	68	0.86
Multifocal	13	7	6	
BCLC stage				
0	25	15	10	0.68
A	144	80	64	

**Table 2** Baseline Characteristics Of Analysis Group

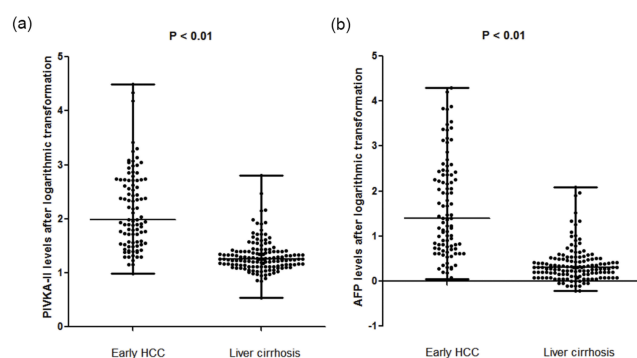
Variables	Analysis Group	Early HCC	Liver Cirrhosis	P value
Sex F/M	68/166	18/77	50/89	0.005
Age (years)	54.37±10.55	57.01±9.87	52.56±10.64	0.001
ALT	33.5 (6–1138)	35 (7–728)	33 (6–1138)	0.13
AST	35 (10–1217)	36 (10–1217)	33 (10–598)	0.13
GGT	32 (7–1082)	36 (7–817)	30 (10–1082)	0.12
TBiL	22.42 (6.30–133)	23.50 (6.30–75.10)	21.80 (6.35–133)	0.72
ALB	35.55±6.06	38.08±5.52	33.82±5.81	0.83
D-Dimer (mg/L)	0.80 (0.10–27.4)	0.48 (0.1–20)	0.92 (0.11–27.40)	0.44
PTA	71.88±17.09	80.73±14.96	65.84±15.8	0.51
PLT (×10 <sup>9</sup> /L)	107.99±75.02	113.09±66.97	104.50±80.10	0.47
AFP (ng/mL)	2.95 (0.60–19,549.10)	15 (0.90–19,549.1)	2 (0.60–121.8)	<0.01
PIVKA-II (mAU/mL)	25.18 (3.49–30,766.38)	90.97 (9.7–30,766.38)	18 (3.49–626.34)	<0.01
Child–Pugh class				
A	173	71	102	0.82
B	61	24	37	

respectively. The sensitivity of PIVKA-II was 84.20%, the specificity of PIVKA-II 82.00%, while the sensitivity of AFP was 85.30%, and the specificity 85.60% (Figure 2).

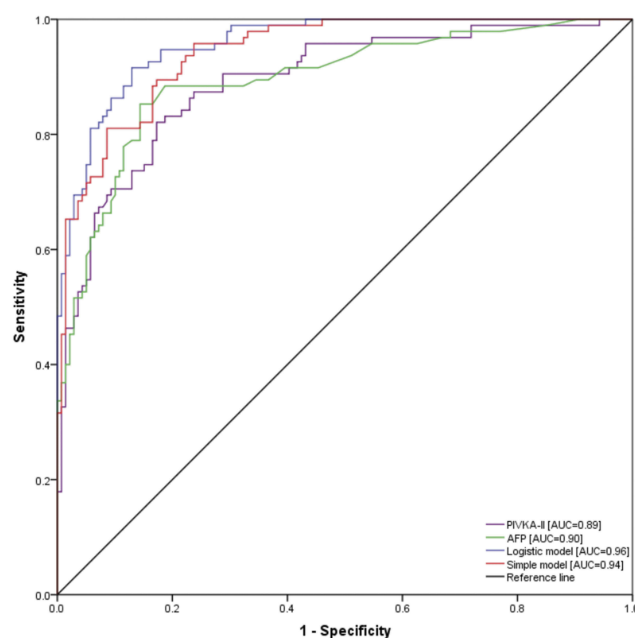
Moreover, multivariate analysis also showed that male gender (OR = 2.70, 95% CI 1.01–7.16) and age (OR = 1.04, 95% CI 1.00–1.08) were independent risk factors for diagnosis of early HCC among LC patients (Table 3).

## Development Of A Logistic Regression Model And A Simple Model In The Analysis Group

A total of 95 early HCC with LC and 139 LC patients in the analysis group were enrolled to build a logistic regression model combining PIVKA-II, AFP, gender, and age. The



**Figure 1** Difference of PIVKA and AFP plasma levels after logarithmic transformation between early HCC patients and liver cirrhosis in the analysis group. **(A)** Serum level of PIVKA-II among early HCC patients was 90.97 (9.7–30,766.38) mAU/mL, significantly higher than that of LC patients at 18 (3.49–626.34) mAU/mL ( $P < 0.01$ ) in analysis group. **(B)** Serum level of AFP among early HCC patients was 15 (0.9–19,549.1) ng/mL, significantly higher than that of LC patients at 2.00 (0.6–121.8) ng/mL ( $P < 0.01$ ) in analysis group.



**Figure 2** Diagnostic values of AFP (green), PIVKA-II (purple), the logistic regression model (blue), and the simple model (red) for early HCC detection among ILC patients in the analysis group.

results of univariate logistic analysis and multivariate logistic analysis are presented in Table 3. The final logistic regression model for predicting early HCC with liver cirrhosis was:  $\text{Logit}(P) = (-10.13) + 3.12(\text{PIVKA}) + 2.54(\text{AFP}) + 0.73(\text{gender}) + 0.04(\text{age})$ . The performance of the model was good with an AUROC of 0.96 (95% CI 0.94–0.98,  $P < 0.01$ ) (Figure 2). At a cut-off probability of 0.31 [ $\text{Logit}(P) = -0.80$ ], the sensitivity and specificity of the model for early HCC detection were 87.4% and 87.8%, respectively.

**Table 3** Univariate And Multivariate Analyses Of All Characteristics In Analysis Group

Characteristic	Univariate Analysis		Multivariate Analysis	
	OR (95% CI)	P value	OR (95% CI)	P value
Sex F/M	2.11 (1.15, 3.85)	0.02	2.70 (1.01, 7.16)	0.047
Age (years)	1.04 (1.01, 1.06)	< 0.01	1.04 (1.00, 1.08)	0.031
ALT	1.00 (0.99, 1.01)	0.13	–	
AST	0.99 (0.98, 1.02)	0.17	–	
GGT	1.00 (0.99, 1.01)	0.28	–	
TBiL	0.99 (0.98, 1.00)	0.33	–	
ALB	0.89 (0.76, 1.14)	0.27	–	
D-Dimer (mg/L)	1.04 (0.98, 1.11)	0.21	–	
PTA	0.96 (0.91, 1.05)	0.14	–	
PLT ( $\times 10^9/L$ )	1.00 (0.99, 1.01)	0.39	–	
AFP (ng/mL)	1.04 (1.02, 1.06)	< 0.01	1.03 (1.01, 1.05)	0.001
PIVKA-II (mAU/mL)	1.02 (1.01, 1.03)	< 0.01	1.02 (1.01, 1.03)	< 0.01
Child-Pugh class	0.88 (0.76, 1.10)	0.37	–	–

According to the multivariate analysis, PIVKA and AFP were two critical independent risk factors for detection of early HCC in LC patients. Therefore, we developed a simple model: PIVKA+AFP, the performance of which was good with AUROC of 0.94 (95% CI 0.92–0.97,  $P < 0.01$ ) (Figure 2). At a cut-off value of 56.03 the sensitivity and specificity of the model for early HCC detection was 81.1% and 91.4%, respectively.

## Validation Of The Two Models For Early HCC Detection In Liver Cirrhosis Patients

The characteristics of the validation group are shown in Table 4. To validate the diagnostic value of the logistic

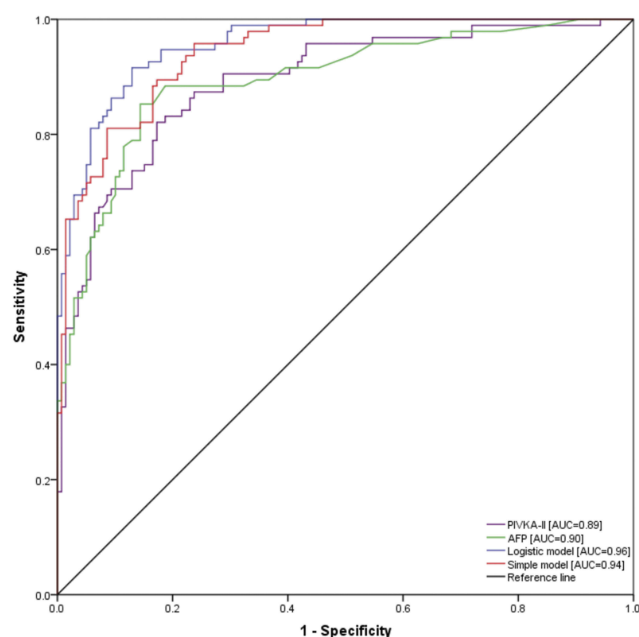
regression model in detection of early HCC in LC patients, a ROC curve was conducted in the validation group. The AUROC of the logistic regression model was 0.97 (95% CI 0.94–0.99,  $P < 0.01$ ) (Figure 3). The sensitivity and specificity of the cut-off value Logit (P) =  $-0.80$  were 89.30% and 93.1%, respectively. The mistake diagnostic rate was 6.9%, the omission diagnostic rate 10.7%, the total consist rate 91.53%. The Concordance (C) index value of the logistic model was 0.97 and the calibration curve demonstrated good agreement between predictions and actual observations (Figure 4).

The AUROC of the simple model: PIVKA-II + AFP in the validation group was 0.95 (95% CI 0.92–0.98,  $P < 0.01$ )

**Table 4** Baseline Characteristics Of Validation Group

Variables	Validation Group	Early HCC	Liver Cirrhosis	P value
Sex F/M	45/132	9/65	36/67	0.001
Age (years)	54.32 $\pm$ 11.23	56.24 $\pm$ 10.70	52.94 $\pm$ 11.46	0.04
ALT	31 (4–547)	34.05 (4–547)	28 (6–252)	0.19
AST	38 (13–427)	39.5 (13–252)	36 (13–427)	0.84
GGT	37 (11–304)	42.5 (14–96)	34 (11–304)	0.06
TBiL	22.2 (8–573.5)	20.68 (8.67–67.70)	22.80 (8.00–573.5)	0.23
ALB	35.76 $\pm$ 6.57	35.13 $\pm$ 5.73	36.22 $\pm$ 7.11	0.26
D-Dimer (mg/L)	0.6 (0.05–28.26)	0.41 (0.07–11.44)	0.69 (0.05–28.26)	0.17
PTA	74.7 $\pm$ 16.02	72.64 $\pm$ 13.29	76.19 $\pm$ 17.64	0.15
PLT ( $\times 10^9/L$ )	117.59 $\pm$ 91.13	127.01 $\pm$ 59.67	110.82 $\pm$ 108.03	0.20
AFP (ng/mL)	3.9 (0.50–7679.70)	20 (1.2–7679.7)	2.5 (0.50–16.8)	<0.01
PIVKA-II (mAU/mL)	27.96 (4.40–26,785.97)	108.32 (4.4–26,785.97)	20.14 (5.00–237.00)	<0.01
Child-Pugh class				
A	110	47	63	0.88
B	67	27	40	





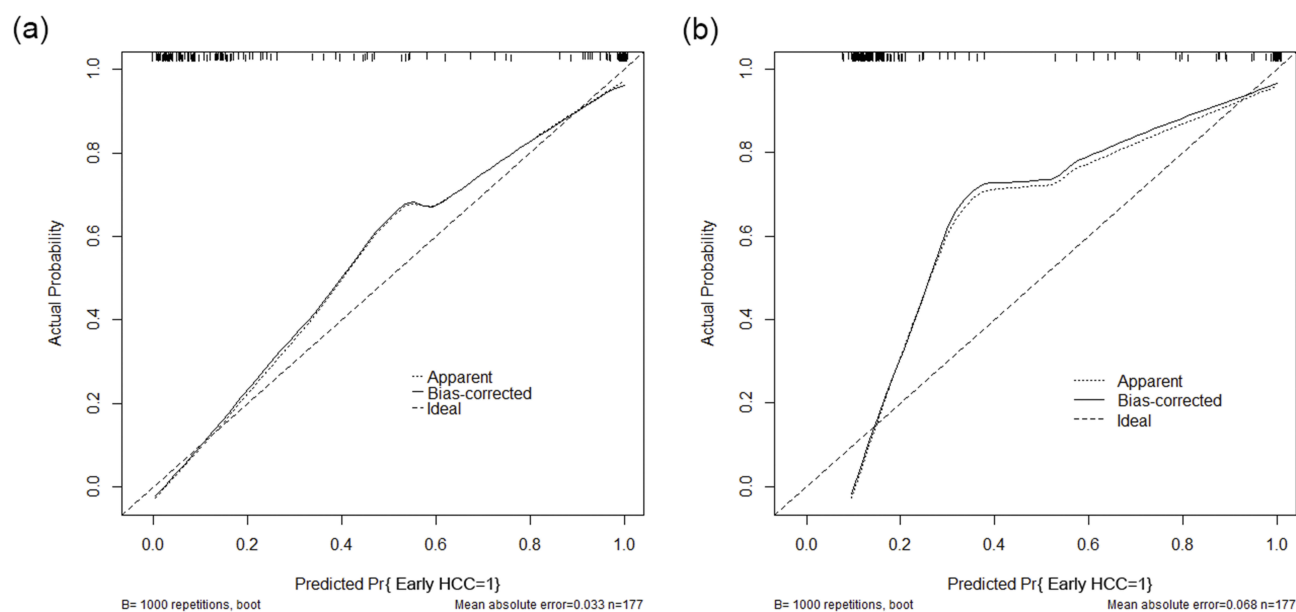
**Figure 3** Diagnostic values of the logistic regression model and the simple model for early HCC detection among LC patients in the validation group.

(Figure 3). The sensitivity and specificity of the cut-off value of 56.03 was 82.4% and 94.2%, respectively. The mistake diagnostic rate was 5.8%, the omission diagnostic rate 17.6%, the total consist rate 89.27%. The C index value of the simple model was 0.95 and the calibration curve demonstrated good agreements between predictions and actual observations (Figure 4).

## Discussion

Diagnosis of HCC at an early stage is critical for the five-year survival rate of HCC patients. Recent studies have indicated that diagnostic accuracy of US and AFP is limited in early HCC detection, especially among LC patients.<sup>22</sup> Therefore, it is a great challenge to identify novel biomarkers or models for early-stage HCC diagnosis.

In the current study, we demonstrated that the serum PIVKA-II level was significantly higher in early HCC patients compared with LC patients, which is consistent with a recent study in a French cohort.<sup>16</sup> These findings indicate that PIVKA-II may play a crucial role in the diagnosis of early HCC and hepatocarcinogenesis. Indeed, Wang et al. showed that serum PIVKA-II level could be a potential marker for early diagnosis and improve assessment of tumor prognosis.<sup>23</sup> Moreover, PIVKA-II could promote HCC growth and metastasis through interaction with human vascular endothelial cells.<sup>12,24</sup> Univariate analysis in our study shows that both PIVKA-II and AFP are important predictors for early HCC detection. We further compared the value of PIVKA and AFP in early HCC detection by ROC curve and found that PIVKA-II (AUROC = 0.89) was not superior to AFP (AUROC = 0.90). In contrast to our findings, the above study in France showed that both PIVKA-II and AFP were efficient for the diagnosis of early HCC, but PIVKA gave a better performance than AFP for early HCC diagnosis with an



**Figure 4** Validity of the predictive performance of the logistic model (A) and the simple model (B) in estimating the probabilities of early HCC in the validation group (n= 177).

AUROC 0.81.<sup>16</sup> This difference may be due to our early HCC patients all having a background of LC or different geographical origin.

We hypothesized that PIVKA-II and AFP may be complementary in early HCC detection. Therefore, both serum levels of PIVKA-II and AFP were employed in combination to develop a logistic regression and a simple model. The logistic regression model conducted in our study possesses an AUROC of 0.96, a sensitivity of 87.4%, and a specificity of 87.8%. Consistent with our results, a model that combined AFP and PIVKA-II, age, and gender developed by Random Forest (RF) classification showed a good AUROC of 0.95 (0.95, 95% CI 0.93–0.98), with a sensitivity of 93% and a specificity of 84% for early HCC detection in a recent study carried out in the USA.<sup>25</sup> In another recent research in liver cirrhosis patients, Patel et al. derived a multivariate logistic regression model incorporating AFP and FIB-4 (a marker of fibrosis) for early HCC detection among LC patients, and found that the model had good discriminatory power with c-statistics of 0.78.<sup>26</sup> In contrast to our findings, Chen et al. also demonstrated a multimarker algorithm explored by logistic regression models consisted of PIVKA-II and AFP, which showed good ability in discriminating early HCC among LC AUROC of 0.81, while the AUROC of our model is 0.93.<sup>17</sup> The different findings between our research and the above study may be due to our early HCC patients being all accompanied by liver cirrhosis.

Although the above logistic models demonstrate great value in early HCC diagnosis, they are not easy to use in clinical practice. Therefore, we developed an easy-to-use model: PIVKA + AFP, which could achieve an AUROC of 0.94, a sensitivity of 81.1%, a specificity of 91.4%, at a cut-off value of 56.03 for early HCC detection among liver cirrhosis. In line with our findings, a nested case-control study also combined PIVKA-II and AFP and showed that the sensitivity for early HCC detection achieved about 91% at month 0, and 73% at month 12, and the researcher concluded that the two biomarkers are needed to complement ultrasound in early HCC detection.<sup>27</sup> According to the current study, we consider that the simple model is comparable with the logistic model in statistics, but it is easy to use clinically. Given the retrospective nature of our study, it has some limitations. For instance, it was limited by possible unexpected confounders or missing data and it was a single-center study.

In conclusion, the diagnosis of early HCC is crucial and novel models are urgently needed in clinical practice. Our study suggests that a simple model of PIVKA-II + AFP could

improve the accuracy of early HCC detection among liver cirrhosis patients. Further studies are necessary to validate our simple model in multicenters and more subjects.

## Ethics Approval And Consent To Participate

This study was approved by the institutional ethics committee of Provincial Hospital affiliated to Shandong First Medical University. Written informed consent was obtained from each subject.

## Availability Of Data And Materials

The authors can confirm all relevant data are included in the article and materials are available on request.

## Author Contributions

Jinhua Hu and Jun Liu designed the study, Yi Cui and Jingfang Zhao edited the final version of the manuscript; Tao Li and Hongguang Li conducted the sample analysis and drafted the paper; Aihua Wang and Xiaoyan Su contributed to the statistical analyses; all authors read and approved the final manuscript. All authors contributed to data analysis, drafting or revising the article, gave final approval of the version to be published, and agree to be accountable for all aspects of the work.

## Disclosure

The authors report no conflicts of interest in this work.

## References

1. Grandhi MS, Kim AK, Ronnekleiv-Kelly SM, Kamel IR, Ghasebeh MA, Pawlik TM. Hepatocellular carcinoma: from diagnosis to treatment. *Surg Oncol*. 2016;25:74–85. doi:10.1016/j.suronc.2016.03.002
2. Shim JJ, Oh CH, Kim JW, Lee CK, Kim BH. Liver cirrhosis stages and the incidence of hepatocellular carcinoma in chronic hepatitis B patients receiving antiviral therapy. *Scand J Gastroenterol*. 2017;52:1029–1036. doi:10.1080/00365521.2017.1335773
3. Altekruse SF, McGlynn KA, Reichman ME. Hepatocellular carcinoma incidence, mortality, and survival trends in the United States from 1975 to 2005. *J Clin Oncol*. 2009;27:1485–1491. doi:10.1200/JCO.2008.20.7753
4. Llovet JM, Zucman-Rossi J, Pikarsky E, et al. Hepatocellular carcinoma. *Nat Rev Dis Primers*. 2016;2:16018. doi:10.1038/nrdp.2016.18
5. Singal AG, Pillai A, Tiro J. Early detection, curative treatment, and survival rates for hepatocellular carcinoma surveillance in patients with cirrhosis: a meta analysis. *Ann Intern Med*. 2014;161:261–269. doi:10.7326/M14-0558
6. Heimbach JK, Kulik LM, Finn RS, et al. AASLD guidelines for the treatment of hepatocellular carcinoma. *Hepatology*. 2018;67:358–380. doi:10.1002/hep.29086
7. Mokdad AA, Hester CA, Singal AG, Yopp AC. Management of hepatocellular in the United States. *Chin Clin Oncol*. 2017;6:21. doi:10.21037/cco

8. Singal A, Volk M, Waljee A, et al. Meta-analysis: surveillance with ultrasound for early stage hepatocellular carcinoma in patients with cirrhosis. *Aliment Pharmacol Ther.* 2009;30:37–47. doi:10.1111/apt.2009.30.issue-1
9. Shang S, Plymoth A, Ge S, et al. Identification of osteopontin as a novel marker for early hepatocellular carcinoma. *Hepatology.* 2012;55:483–490. doi:10.1002/hep.24703
10. Wang FH, Yip YC, Zhang M, et al. Diagnostic utility of glypican-3 for hepatocellular carcinoma on liver needle biopsy. *J Clin Pathol.* 2010;63:599–603. doi:10.1136/jcp.2010.075374
11. El-Serag HB, Marrero JA, Rudolph L, Reddy KR. Diagnosis and treatment of hepatocellular carcinoma. *Gastroenterology.* 2008;134:1752–1763. doi:10.1053/j.gastro.2008.02.090
12. Suzuki M, Shiraha H, Fujikawa T, et al. Des-gamma-carboxyprothrombin is a potential autologous growth factor for hepatocellular carcinoma. *J Biol Chem.* 2005;280:6409–6415. doi:10.1074/jbc.M406714200
13. Zhang YS, Chu JH, Cui SX, Qu XJ. Des-γ-carboxyprothrombin (DCP) as a potential autologous growth factor for the development of hepatocellular carcinoma. *Cell Physiol Biochem.* 2014;34:903–915. doi:10.1159/000366308
14. Fujikawa T, Shiraha H, Ueda N, et al. Des-gamma-carboxyl prothrombin promoted vascular endothelial cell proliferation and migration. *J Biol Chem.* 2007;282:8741–8748. doi:10.1074/jbc.M609358200
15. Matsubara M, Shiraha H, Kataoka J, et al. Des-γ-carboxyl prothrombin is associated with tumor angiogenesis in hepatocellular carcinoma. *J Gastroenterol Hepatol.* 2012;27:1602–1608. doi:10.1111/jgh.2012.27.issue-10
16. Poté N, Cauchy F, Albuquerque M, et al. Performance of PIVKA-II for early hepatocellular carcinoma diagnosis and prediction of microvascular invasion. *J Hepatol.* 2015;62:848–854. doi:10.1016/j.jhep.2014.11.005
17. Chen H, Zhang Y, Li S, et al. Direct comparison of five serum biomarkers in early diagnosis of hepatocellular carcinoma. *Cancer Manag Res.* 2018;10:1947–1958. doi:10.2147/CMAR
18. Kudo M, Izumi N, Kokudo N, et al. Management of hepatocellular carcinoma in Japan: consensus-based clinical practice guidelines proposed by the Japan Society of Hepatology (JSH) 2010 updated version. *Dig Dis.* 2011;29:339–364. doi:10.1159/000327577
19. Kudo M, Matsui O, Izumi N, et al. JSH consensus-based clinical practice guidelines for the management of hepatocellular carcinoma: 2014 update by the Liver Cancer Study Group of Japan. *Liver Cancer.* 2014;3:458–468. doi:10.1159/000343875
20. Song DS, Bae SH. Changes of guidelines diagnosing hepatocellular carcinoma during the last ten-year period. *Clin Mol Hepatol.* 2012;18:258–267. doi:10.3350/cmh.2012.18.3.258
21. Bruix J, Sherman M. Management of hepatocellular carcinoma: an update. *Hepatology.* 2011;53:1020–1022. doi:10.1002/hep.24199
22. Wang X, Kwak KJ, Yang Z, et al. Extracellular mRNA detected by molecular beacons in tethered lipoplex nanoparticles for diagnosis of human hepatocellular carcinoma. *PLoS One.* 2018;13:e0198552. doi:10.1371/journal.pone.0198552
23. Wang X, Zhang W, Liu Y, et al. Diagnostic value of prothrombin induced by the absence of vitamin K or antagonist-II (PIVKA-II) for early stage HBV related hepatocellular carcinoma. *Infect Agent Cancer.* 2017;12:47. doi:10.1186/s13027-017-0153-6
24. Fujikawa T, Shirah AH, Yamamoto K. Significance of des-gamma-carboxyprothrombin production in hepatocellular carcinoma. *Acta Med Okayama.* 2009;63:299–304. doi:10.18926/AMO/31826
25. Hemken PM, Sokoll LJ, Yang X, et al. Validation of a novel model for the early detection of hepatocellular carcinoma. *Clin Proteomics.* 2019;16:2. doi:10.1186/s12014-018-9222-0
26. Patel J, Yopp A, Waljee AK, Singal AG. Development and internal validation of a model for early detection of hepatocellular carcinoma in patients with cirrhosis. *J Clin Gastroenterol.* 2016;50:175–179. doi:10.1097/MCG.0000000000000377
27. Lok AS, Sterling RK, Everhart JE, et al. Des-gamma-carboxy prothrombin and alpha-fetoprotein as biomarkers for the early detection of hepatocellular carcinoma. *Gastroenterology.* 2010;138:493–502. doi:10.1053/j.gastro.2009.10.031

## Cancer Management and Research

### Publish your work in this journal

Cancer Management and Research is an international, peer-reviewed open access journal focusing on cancer research and the optimal use of preventative and integrated treatment interventions to achieve improved outcomes, enhanced survival and quality of life for the cancer patient.

Submit your manuscript here: <https://www.dovepress.com/cancer-management-and-research-journal>

The manuscript management system is completely online and includes a very quick and fair peer-review system, which is all easy to use. Visit <http://www.dovepress.com/testimonials.php> to read real quotes from published authors.

Dovepress