

Prognostic Role of NT-proBNP for in-Hospital and I-Year Mortality in Patients with Acute Exacerbations of COPD [Corrigendum]

Li H, Zeng Z, Cheng J, et al. *Int J Chron Obstructive Pulm Dis*. 2020;15:57–67. The correct figures are as below:

On page 63, **Figures 3** is incorrect, the authors missed to check the correct revised figures were inserted into the manuscript during the revision process.

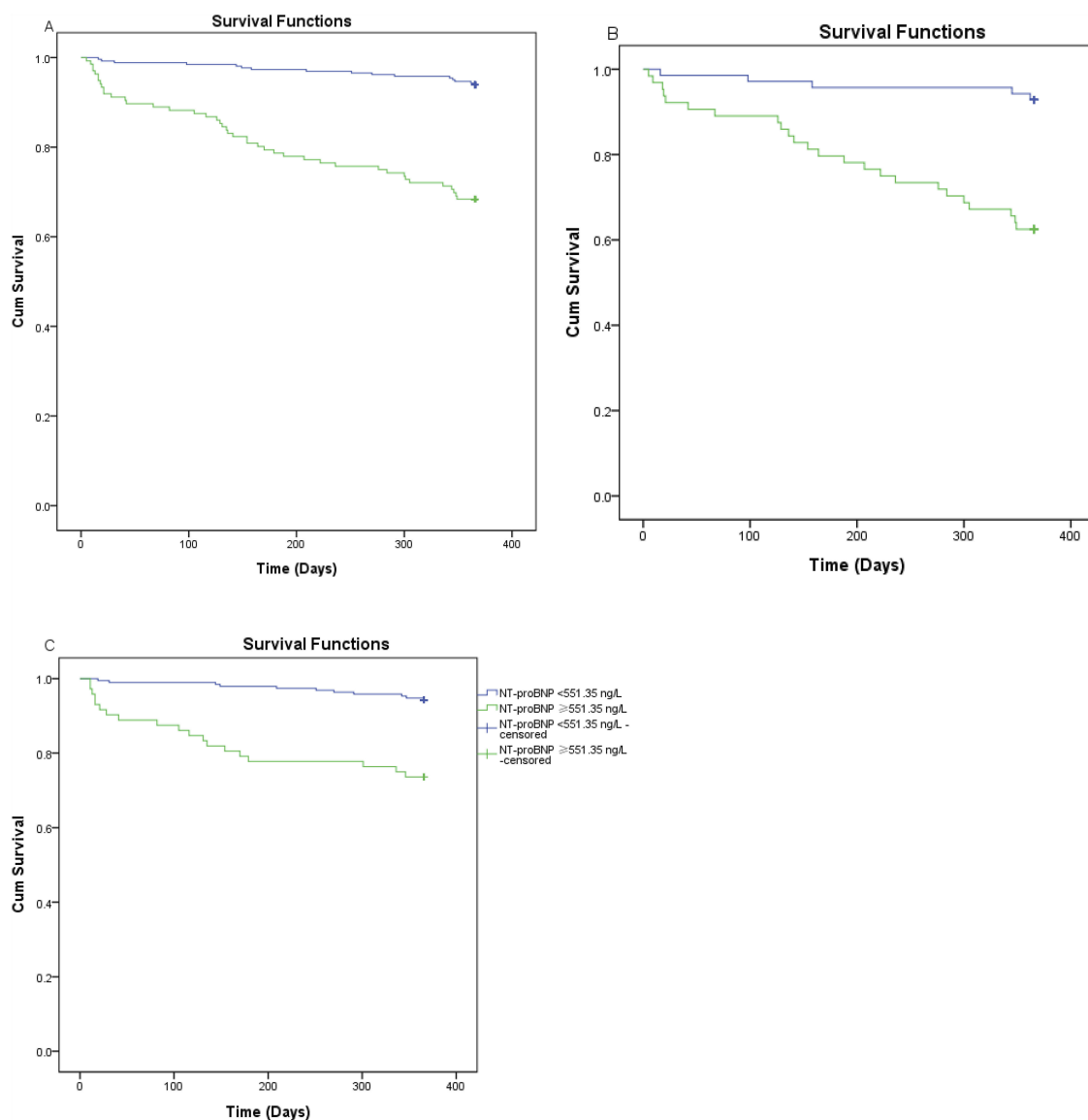


Figure 3 Kaplan-Meier survival curves evaluating the time to death in days for patients with NT-proBNP concentrations ≥ 551.35 ng/L and NT-proBNP concentrations < 551.35 ng/L. Panel A: survival curve for all patients; Panel B: survival curve for patients with CHF; Panel C: survival curve for patients without CHF.

Abbreviation: CHF, congestive heart failure.

International Journal of Chronic Obstructive Pulmonary Disease**Dovepress****Publish your work in this journal**

The International Journal of COPD is an international, peer-reviewed journal of therapeutics and pharmacology focusing on concise rapid reporting of clinical studies and reviews in COPD. Special focus is given to the pathophysiological processes underlying the disease, intervention programs, patient focused education, and self management

protocols. This journal is indexed on PubMed Central, MedLine and CAS. The manuscript management system is completely online and includes a very quick and fair peer-review system, which is all easy to use. Visit <http://www.dovepress.com/testimonials.php> to read real quotes from published authors.

Submit your manuscript here: <https://www.dovepress.com/international-journal-of-chronic-obstructive-pulmonary-disease-journal>