

# RETRACTED ARTICLE: Demethylation of the Cosmc Promoter Alleviates the Progression of Breast Cancer Through Downregulation of the Tn and Sialyl-Tn Antigens

This article was published in the following Dove Press journal:  
*Cancer Management and Research*

Feng Xu<sup>1,\*</sup>  
Dong Wang<sup>2,\*</sup>  
JianXiu Cui<sup>1</sup>  
Jie Li<sup>1</sup>  
Hongchuan Jiang<sup>1</sup>

<sup>1</sup>Department of Breast Surgery, Beijing Chao-Yang Hospital, Capital Medical University, Beijing 100020, People's Republic of China; <sup>2</sup>Department of Oncology, Affiliated Hospital of Inner Mongolia University for Nationalities, Tongliao 028000, People's Republic of China

\*These authors contributed equally to this work

**Background:** Aberrant gene methylation in breast cancer is associated with an unfavorable prognosis. Besides, abnormal Cosmc can induce the expression of Tn and STn antigens. The present study aimed to investigate the roles of Cosmc promoter methylation in breast cancer through the regulation of Tn and STn antigens.

**Methods:** The expression patterns of Cosmc and the Tn and STn antigens in breast cancer cell lines were determined. Cosmc was overexpressed to explore the effects of Cosmc on cell behavior, including the growth, migration, invasion and apoptosis of breast cancer cells and tumor growth with in vitro and in vivo experiments. Afterwards, a methyltransferase and a methyltransferase inhibitor were used to alter the methylation status of Cosmc to explore the mechanisms related to Cosmc promoter methylation.

**Results:** Cosmc was poorly expressed in breast cancer cells. Cosmc overexpression inhibited cell growth, migration, and invasion while promoting apoptosis in breast cancer cells in vitro and restraining tumor growth in vivo. Cosmc promoter methylation was found to decrease the levels of Cosmc and increase the expression of the Tn and STn antigens in breast cancer.

**Conclusion:** In conclusion, the demethylation of Cosmc mitigates breast cancer progression through the repression of the Tn and STn antigens, which provides evidence for therapeutic considerations for a novel target against breast cancer.

**Keywords:** breast cancer, cosmc, promoter methylation, Tn antigen, Sialyl-Tn antigen, prognosis

## Introduction

Breast cancer is a frequently diagnosed female malignancy. It is also one of the three most common malignant tumors all over the world together with colon and lung cancer.<sup>1</sup> Breast cancer has caught global attention since the number of women diagnosed with this disease has reached around 1.7 million in 2012.<sup>2</sup> When compared with other cancers, breast cancer is more likely to occur in a younger population, with a median age of 61 years.<sup>3</sup> Currently, the strategies for breast cancer treatment rely on tumor characteristics, tumor size, and location as well as tumor stage at the initial diagnosis.<sup>4</sup> Soon, targeted therapies for breast cancer will present more opportunities for the improvement of current treatments that present complications such as overtreatment risk, excessive costs of cancer care, and diminishing returns.<sup>5</sup> Moreover, risk-prediction models based on DNA methylation bring new hope for risk-targeted prevention and diagnosis of cancer diagnosis.<sup>6</sup> For example, serum DNA methylation has been identified as a powerful biomarker for

Correspondence: Hongchuan Jiang; Jie Li  
Department of Breast Surgery, Beijing Chao-Yang Hospital, Capital Medical University, No. 8, Gongti Nan Lu, Chaoyang District, Beijing 100020, People's Republic of China  
Tel/Fax +86-1085231000  
Email HongchuanJiang\_D@163.com; jiel\_dlo@163.com

monitoring the prognosis and response of metastatic breast cancer.<sup>7</sup> An enhanced understanding of the molecular mechanisms underlying tumorigenesis and progression of breast cancer is needed to provide new target candidates for novel therapeutic interventions.

Recently, Cosmc wild-type cells have been found to express the cell surface associated (MUC1), MUC1-Tn, and Sialyl-Tn (STn) that are correlated with breast cancer.<sup>8</sup> Cosmc is a particular molecular chaperone in the endoplasmic reticulum, which is necessary for the folding of the enzyme and consequent movement of its single client T-synthase into the Golgi apparatus.<sup>9</sup> Hypermethylation of the Cosmc promoter induces its epigenetic silencing, which repels Cosmc transcripts out of Tn4 cells that are short of the activity of T-synthase and express the Tn antigen.<sup>10</sup> The Tn and STn antigens are predominant members of O-glycans, whose synthesis is associated with various glycosyltransferases, such as the T-synthase.<sup>11</sup> The Tn antigen, an intermediate product of glycosylation, is a kind of carbohydrate antigen associated with tumor development, which derives from Cosmc and is absent in normal cells.<sup>12</sup> The STn antigen is a short O-glycan with a sialic acid residue, whose synthesis is mainly controlled by the enzyme ST6GalNAc1 that accelerates the delivery of a sialic acid onto the Tn antigen.<sup>13</sup> The expression of the STn antigen is correlated with an abnormally activated glycosylation pathway in tumor cells, which induces poor outcome and prognosis in cancer patients.<sup>14</sup> However, the mechanisms of Cosmc in breast cancer remain largely unknown. Therefore, we aimed to elucidate the regulatory mechanisms of Cosmc in breast cancer progression related to the regulation of the Tn and STn antigens, to present a theoretical foundation for an enhanced understanding of breast cancer treatment.

## Materials and Methods

### Ethics Statement

The animal experiments were performed following the recommendations from the Guide for the Care and Use of Laboratory Animals of the National Institutes of Health. The protocols for animal experiments were approved by the Institutional Animal Care and Use Committee of Beijing Chao-Yang Hospital.

### Cell Culture and Treatment

The breast cancer cell lines MCF-7, MDA-MB-468, MDA-MB-453, MDA-MB-231, and normal breast cells were all

purchased from the American Type Culture Collection (ATCC, Manassas, VA, USA). Next, the cell lines were cultured in 89% Dulbecco's modified eagle's medium (DMEM; Gibco Company, Grand Island, NY, USA) supplemented with 1% penicillin/streptomycin (Gibco Company, Grand Island, NY, USA) and 10% fetal bovine serum (FBS) (Gibco Company, Grand Island, NY, USA). Western blot analysis was performed to measure the expression of Cosmc in the four breast cancer cell lines and normal breast cells. Cells in the logarithmic growth phase were detached with 1 mL of 0.25% trypsin (Shanghai Sangon Biotechnology Co. Ltd., Shanghai, China) for 3 min and neutralized with serum medium (Gibco Company, Grand Island, NY, USA). Afterwards, the cells ( $1 \times 10^5$  cells/mL) were inoculated into a 96-well plate for 24-h routine culture. When the cell confluence reached around 75%, the Cosmc vector (oe-Cosmc) (50 ng/mL, Shanghai GenePharma Co., Ltd., Shanghai, China) or its negative control (oe-NC) was introduced into the cells following the instructions of the Lipofectamine 2000 kit (Invitrogen Inc., Carlsbad, CA, USA). To alter the methylation status, the cells were treated with dimethyl sulfoxide (DMSO; Thermo Fisher Scientific Inc., Waltham, MA, USA), methyltransferase M. SssI (Invitrogen, Carlsbad, California, USA), or 5 $\mu$ M 5-aza-2'-deoxycytidine (5-aza-dc) (Beijing Biolab Technology Co., Ltd., Beijing, China).<sup>15</sup>

### Western Blot Analysis

After trypsinization, the cells were lysed using enhanced radio-immunoprecipitation assay (RIPA) lysis buffer (Boster Biological Technology Co. Ltd., Wuhan, Hubei, China) supplemented with protease inhibitor. Next, the protein concentration was determined using a bicinchoninic acid (BCA) protein assay kit (Boster Biological Technology Co. Ltd., Wuhan, Hubei, China). The proteins were separated by 10% sodium dodecyl sulfate-polyacrylamide gel electrophoresis (SDS-PAGE) and transferred onto a polyvinylidene fluoride (PVDF) membrane that was later blocked with 5% bovine serum albumin (BSA; Shanghai Sangon Biotechnology Co. Ltd., Shanghai, China) at room temperature for 2 h to prevent non-specific binding. Then, the membrane was probed with the diluted mouse anti-human Cosmc primary antibody (sc-271829, Santa Cruz Biotechnology Inc., Santa Cruz, CA, USA), the rabbit anti-human primary antibodies to Tn (ab233231, 1:1000, Abcam Inc., Cambridge, MA, USA), proliferating cell nuclear antigen (PCNA) (ab18197, 1:2000, Abcam), Ki67 (ab16667, 1:2000, Abcam), Bcl2 Associated X protein (Bax) (ab32503, 1:5000, Abcam), Bcl2 associated agonist of cell death (Bad) (ab90435, 1:5000, Abcam) and

mouse anti-human antibody to STn (ab115957, 1:500, Abcam) overnight at 4°C. After 3 washes with phosphate-buffered saline with Tween-20 (PBST; Shanghai Sangon Biotechnology Co. Ltd., Shanghai, China), the membrane was probed with HRP-labeled secondary antibody, goat anti-rabbit (ab6721, 1:2000, Abcam) or rabbit anti-mouse (ab6728, 1:2000) at room temperature for 1 h. After another 3 PBST washes, an enhanced chemiluminescence (ECL) solution (Merck Millipore, Billerica, MA, USA) was used for further color-developing. The Image J software was used for gray value analysis of each protein band with glyceraldehyde-3-phosphate dehydrogenase (GAPDH) used as the internal reference.

### 5-Ethynyl-2'-Deoxyuridine (EdU)

Cell viability was assessed using an EdU assay.<sup>16</sup> The cells were inoculated into a 24-well plate, with 3 duplicate wells set for each group. Next, the cells were incubated with EdU (C10341-1, Guangzhou RiboBio Co., Ltd., Guangdong, China) for 2 h with a final concentration of 10 µmol/L. After the culture medium was removed, the cells were fixed with a PBS solution containing 4% paraformaldehyde at room temperature for 15 min and then washed with PBS containing 3% BSA twice. Next, the cells were permeabilized by adding 0.5% Triton-100 in PBS at room temperature for 20 min and washing again with PBS containing 3% BSA twice. The cells in each well were incubated with 100 µL of staining solution at room temperature for 30 min, avoiding exposure to light and washed with PBS containing 3% BSA twice. The nuclei of the cells were stained with 4',6-diamidino-2-phenylindole (DAPI; C10341-1, Guangzhou Ribobio Biotechnology Co., Ltd., Guangzhou, China) for 5 min, followed by PBS washes and sealing. Lastly, 6–10 visual fields were randomly selected to observe and record the number of positive cells in each visual field under a fluorescence microscope (FM-600, Shanghai Pudan Optical Instrument Co. Ltd., Shanghai, China). The EdU labeling rate (%) = the number of positive cells / (the number of positive cells + the number of negative cells) × 100%.

### Scratch Test

Next, a ruler and a marking pen were used to draw horizontal lines on the bottom of a 6-well plate at the interval of 0.5–1 cm, with at least 5 lines crossed per well. Then, the cells were inoculated into the plate at a density of  $5 \times 10^5$  cells per well and cultured with a medium containing 10% FBS overnight. Subsequently, a 10 µL sterile pipette was used to scratch lines perpendicular to the horizontal

lines on the bottom of the plate. Lastly, the scratch distance was measured and recorded under an optical microscope after 0 and 24 h of cell culture and the images were obtained under an inverted microscope to analyze cell migration.

### Transwell Assay

Cell invasion was evaluated as previously outlined.<sup>17</sup> The apical Transwell chamber was coated with Matrigel (Becton, Dickinson and Company, NJ, USA) and reacted at 37°C for 30 min to aggregate Matrigel into a gel. Next, the basolateral membrane was hydrated before the experiment. The cells were cultured in serum-free medium for 12 h, harvested and re-suspended by serum-free medium ( $1 \times 10^5$  cells/mL). Then, the basolateral chamber was added with medium containing 10% FBS and the Transwell chambers were added with 100 µL of cell suspension followed by incubation at 37°C for 24 h. The cells that did not invade the surface of the Matrigel membrane were gently removed with a cotton swab, and the rest of the cells were fixed in 100% methanol and stained with 1% toluidine blue (Sigma, St. Louis, MO, USA). Five fields were randomly selected to count the number of stained invasive cells under an inverted optical microscope (Carl Zeiss Meditec AG, Oberkochen, Germany).

### Flow Cytometry

Breast cancer cells were inoculated into a 6-well plate with medium without penicillin/streptomycin at a concentration of  $1 \times 10^6$  cells/well. After 48 h of transfection, the harvested cells were washed twice and stained with Annexin V-fluorescein isothiocyanate (FITC) and propidium iodide (PI) (BD Biosciences, Franklin Lakes, NJ, USA). Next, cell apoptosis was detected using a flow cytometer (FACSCalibur, BD Biosciences, Franklin Lakes, NJ, USA) following the instructions of the Annexin V-FITC/PI apoptosis detection kit (BD Biosciences, Franklin Lakes, NJ, USA).<sup>12</sup>

### DNA Extraction and DNA Methylation in vitro

The genomic DNA from cultured cells was extracted and purified following the instructions from the PureLink™ Genomic DNA Mini kit (Invitrogen Inc., Carlsbad, CA, USA). The DNA substrate was treated with the methyltransferase M.SssI including an optimized 10 × reaction buffer and 50 × accessory factors in an S-adenosylmethionine (SAM) solution. The methylation system was 40 µL, including

1 µg of DNA, 0.1 mM SAM, 1 × reaction buffer and 1 U of methyltransferase M.SssI. This mixed system was incubated at 37°C for 15 min and later treated for 20 min with a heat-treatment at 60°C before hydrolysis to deactivate the enzyme.

## Methylation-Specific Polymerase Chain Reaction (MSP)

A DNA Methylation-Gold™ kit (D5005, Zymo Research, Irvine, CA, USA) was used to detect methylation of the Cosmc promoter region. The primer sequences used for MSP amplification were as follows: Cosmc-MD (5'-GAGAGTTCGGGTACGTAG-3') and Cosmc-MR (5'-GTTAACGCACCACTCCGTAC-3'). The sequences of unmethylated primers were as follows: Cosmc-UD (5'-GTGTTTGGGTTATGTAGGTTT-3') and Cosmc-UR (5'-AACACACCACTCCATTACACTCC-3'). The purified DNA was converted using a CT conversion reagent (D5005, Zymo Research, Irvine, CA, USA). Following degeneration and disulfate transformation, the DNA was desulfurated and purified. The PCR was performed with the reaction conditions as follows: a cycle of pre-denaturation at 95°C for 10 min, followed by 35 cycles of denaturation at 95°C for 45 s, treatment at 56°C (methylated)/50°C (non-methylated) for 45 s, annealing at 72°C for 45 s and extension at 72°C for 45 s, and a final extension at 72°C for 10 min. Lastly, the PCR products were subjected to agarose gel electrophoresis, gel electrophoresis imaging and image analysis using an image analysis system (Invitrogen, Carlsbad, California, USA).

## Bisulfite Sequencing PCR (BSP)

The bisulfite sequencing primers were designed, and the primer sequences were as follows: specific primer (F: 5'-TTTAAAGAGAGGGAGGGGTTAGG-3'; R: 5'-TCCAAACAATAAACTTCAAAATCATTC-3'). The steps and conditions of the PCR reaction were the same as above. The PCR products were subjected to agarose gel electrophoresis. The target bands were cut under ultraviolet light and put into a 1.5 mL Eppendorf (EP) tube, and the recovery process was conducted according to the instructions of the agarose gel DNA recovery kit (Tiangen Bio-tech, Beijing, China). Then, the cloning reaction system was established, which consisted of 5.5 µL of PCR products (bisulfite sequencing prime amplification), 1 µL of T-easy, 1 µL of Ligase, and 7.5 µL of 2 × buffer (pGEM-T Easy Vector Systems, Promega, Madison, WI, USA), followed by an overnight reaction at 4°C. Subsequently, 10 µL of the ligation products were added into 100 µL of DH5a competent cells in a tube and evenly mixed.

The products were placed on ice for 30 min, treated with thermal excitation at 42°C for 45 s, and incubated on ice for 1 min. Then, the products were added with 800 µL of Super Optimal broth with Catabolite repression (SOC) fluid medium, followed by oscillating-culture at 37°C for 60 min. The samples were then added with Luria-Bertani (LB) solid medium containing X-gal, isopropyl-β-D-thiogalactopyranoside (IPTG) and Amp, followed by oscillating-culture and amplification at 37°C. With at least 10 single bacterial colonies (white clones) selected, the PCR reactions for the clones were conducted using the BcaBEST sequencing Primers and MS universal primer, and the positive recombinants were screened using agarose gel electrophoresis, culture overnight and treated with bacterial fluid sequencing.

## Chromatin Immunoprecipitation (ChIP)

Following the instructions of commercially available ChIP kit (Millipore, Billerica, MA, USA), the cells were fixed with 1% formaldehyde at room temperature for 10 min for stably cross-linking between intracellular DNA and proteins when the cell confluence reached 70% - 80%. Afterwards, the cells were ultrasonicated and the harvested fragments were centrifuged at 13,000 rpm and 4°C. The supernatant was collected into tubes and then incubated with the antibody to RNA polymerase II in positive control, antibody to normal IgG in NC and mouse antibodies to Dnmt1 (ab13537, 1:100, Abcam), Dnmt3a (ab2850, 1:100, Abcam) and Dnmt3b (ab2851, 1:100, Abcam), respectively, overnight at 4°C. The endogenous DNA-protein compounds were precipitated with Protein Agarose/Sepharose. The supernatant was discarded after immediate centrifugation and the non-specific compounds were eluted. After de-crosslinking overnight at 65°C, the DNA fragments were purified by phenol/chloroform extraction and the expression of the Cosmc promoter was determined by reverse transcription-quantitative polymerase chain reaction (RT-qPCR).

## Xenograft Tumor in Nude Mice

A total of 24 healthy nude mice aged 5–6 weeks (Beijing Institute of Pharmacology of Chinese Academy of Medical Science, Beijing, China) were acclimatized in separate cages of a specific pathogen-free (SPF) grade animal laboratory for a week, with a humidity of 60% - 65% at a temperature of 22°C - 25°C. The mice were provided with free access to food and water under a cycle of 12 h of light and darkness with their health conditions checked prior to the experiment. Meanwhile, the cell lines stably transfected with oe-Cosmc or oe-NC were constructed and made into a cell suspension which was



subcutaneously inoculated into mice (12 mice per treatment). The tumor size was recorded during the growth process. After 5 weeks, the mice were euthanized to measure tumor weight and the expression of Tn, ST, Ki67, PCNA, Bax and Bad in tumor tissues.

## Statistical Analysis

All data were analyzed using the Statistic Package for the Social Science (SPSS 19.0 statistical software (IBM Corp. Armonk, NY, USA). All experiments were repeated independently 3 times. The measurement data were described as mean  $\pm$  standard deviation. The data distribution was tested for normality using the Kolmogorov–Smirnov method. Comparisons between two groups were performed using a *t*-test. If departure from normality and homogeneity of variance was not observed, a non-paired *t*-test was used. Comparisons among multiple groups for data with normal distribution were analyzed using the one-way analysis of variance (ANOVA) and a post-hoc test was conducted using Tukey's test. The proliferation ability at different time points was analyzed by the repeated measures ANOVA. A value of  $p < 0.05$  was considered statistically significant.

## Results

### Cosmc Is Poorly Expressed in Breast Cancer

The expression of the Tn/STn antigen was correlated with the clinicopathological features of tumors. Moreover, Cosmc gene mutation led to Tn/STn antigen exposure. Therefore, to explore the effects of Cosmc on breast cancer, Western blot analysis was conducted to measure the Cosmc protein level in breast cancer cell lines (MCF-7, MDA-MB-468, MDA-MB-453, and MDA-MB-231). The results showed that in contrast to normal breast epithelial cells, significantly decreased Cosmc protein levels were detected in the four breast cancer cell lines, having the lowest expression in MDA-MB-231 and the highest expression in MCF-7 ( $p < 0.05$ ) (Figure 1). Hence, MDA-MB-231 and MCF-7 were selected for the subsequent experiments.

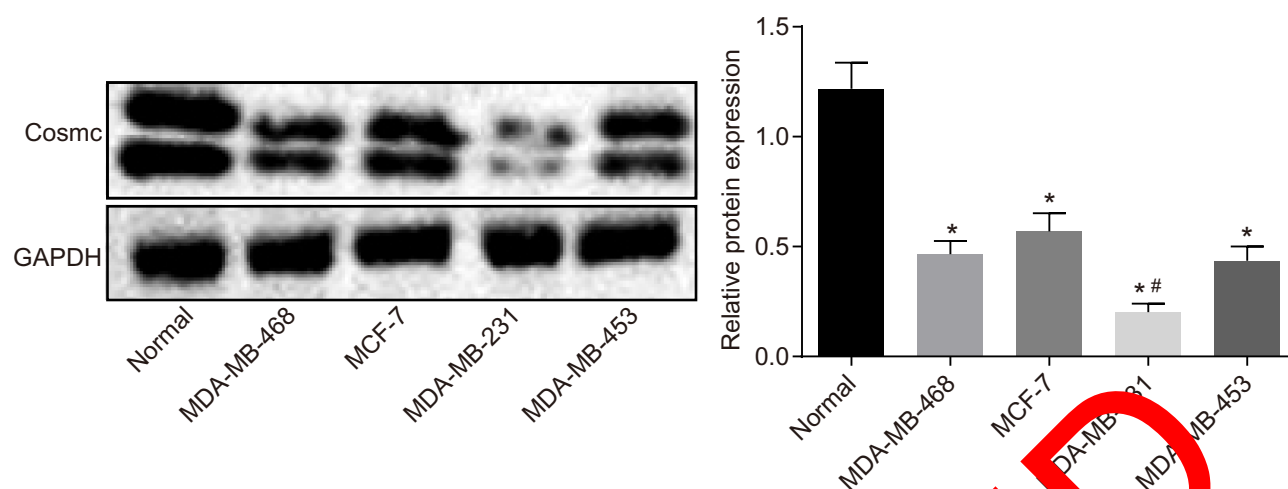
### Cosmc Overexpression Inhibits Growth, Migration, and Invasion While Promoting Apoptosis of Breast Cancer Cells

Cosmc gene mutation depletes T-synthase activity due to the loss of folding stability, thus causing carbohydrate chain synthesis obstruction and exposure to the Tn and

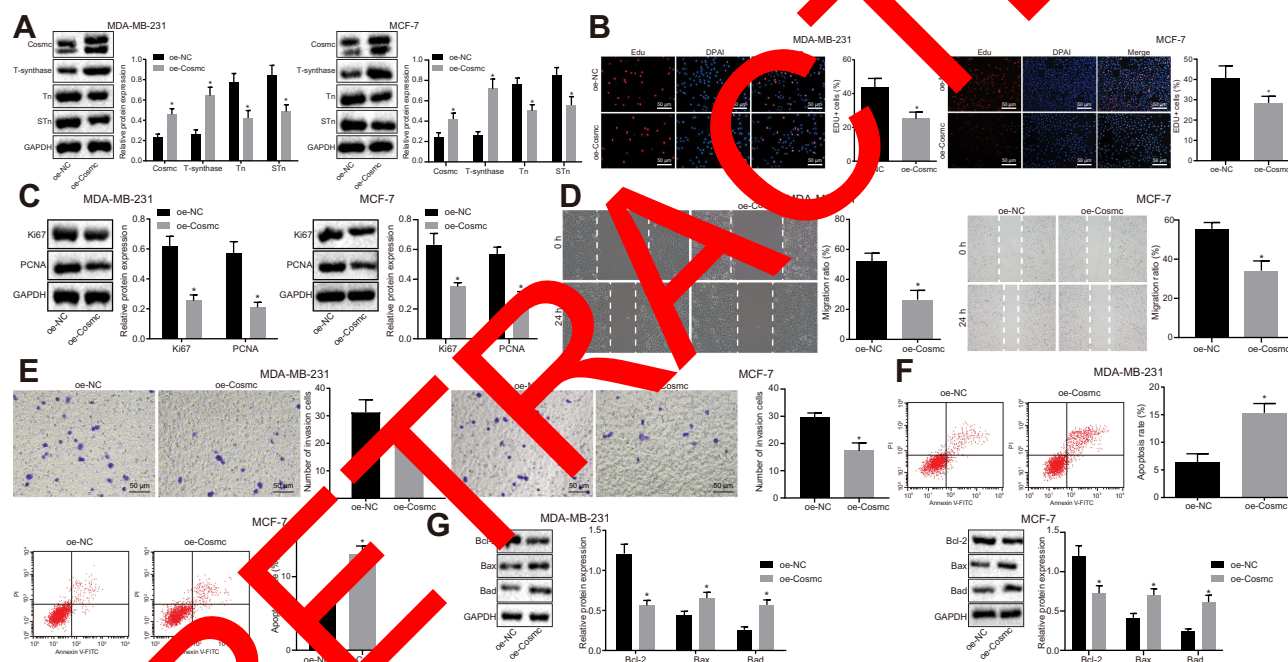
STn antigens.<sup>18</sup> To evaluate the effects of Cosmc on breast cancer, the MDA-MB-231 and MCF-7 cells were transfected with oe-Cosmc and the expression of Cosmc, T-synthase, and the Tn and STn antigens was measured by Western blot analysis. The results revealed that the transduction of oe-Cosmc significantly increased the expression of Cosmc and T-synthase while it greatly decreased the expression of the Tn and STn antigens in MDA-MB-231 and MCF-7 cells ( $p < 0.05$ ; Figure 2A). Next, to further explore the effects of Cosmc on growth, migration, invasion, and apoptosis of breast cancer cells, EdU, scratch test, transwell assay, and flow cytometry were carried out. The results revealed that the transduction of oe-Cosmc led to significant reductions in cell growth, migration and invasion while causing a significant increase in apoptosis of MDA-MB-231 and MCF-7 cells ( $p < 0.05$ ; Figure 2B, D, E, F). Meanwhile, Western blot analysis was performed to measure the expression of the proliferating-associated proteins (Ki67 and PCNA) as well as apoptosis-related proteins (Bcl-2, Bax and Bad). The results displayed that the expression of Bcl-2, Ki67, and PCNA was markedly reduced and that of Bax and Bad was significantly elevated following the transduction of oe-Cosmc in MDA-MB-231 and MCF-7 cells (Figure 2C, G). Together, these results supported the conclusion that Cosmc overexpression contributed to the inhibition of breast cancer cell growth, migration, and invasion and the promotion of apoptosis.

### Demethylation of Cosmc Promoter Reduces Expression Tn and STn Antigens

As reported in a recent study, hypermethylation in the Cosmc promoter region has been shown to cause expression of the Tn and STn antigens.<sup>15</sup> The MethPrimer website (<https://www.urogene.org>) was used to predict CpG islands in the Cosmc promoter region (Figure 3A) and design primers for MSP. Methylation was detected in specific sites of the Cosmc promoter in MDA-MB-231 and MCF-7 cells in comparison with normal breast epithelial cells. The results of BPS revealed that the number of Cosmc methylated sites was significantly increased in MDA-MB-231 and MCF-7 cells compared to normal breast epithelial cells, and a higher number of Cosmc methylated sites was found in MDA-MB-231 cells than in MCF-7 cells. Meanwhile, the DNA methylation status was determined in MDA-MB-231 and MCF-7 cells that were previously treated with methyltransferase M. SssI and methyltransferase inhibitor 5-aza-dc. The results



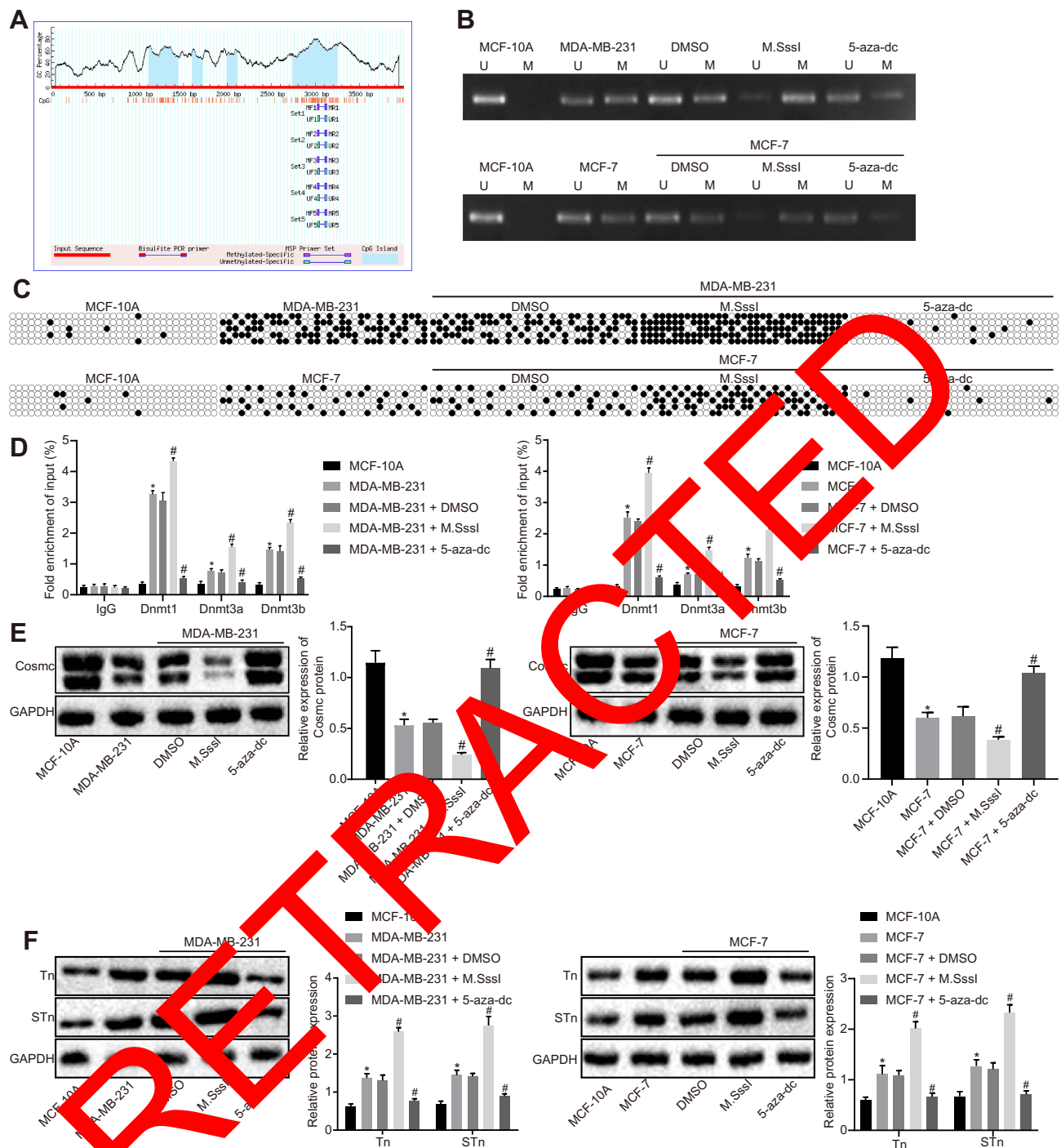
**Figure 1** Cosmc is expressed poorly in breast cancer. Western blots and protein levels of Cosmc in normal breast epithelial cell line and breast cancer cell lines (MCF-7, MDA-MB-468, MDA-MB-453, and MDA-MB-231) were determined. \* $p < 0.05$  vs normal breast epithelial cell line. # $p < 0.05$  vs MCF-7, MDA-MB-468, and MDA-MB-453. The above were measurement data and were expressed as mean  $\pm$  standard deviation. Comparisons between two groups were performed using an independent sample t-test. All experiments were repeated independently 3 times.



**Figure 2** Elevation of Cosmc plays a promotory role in the growth, migration, and invasion and a promotive role in the apoptosis of breast cancer cells. MDA-MB-231 and MCF-7 cells were induced with oe-Cosmc to generate breast cancer cell line overexpressing Cosmc. oe-NC served as a negative control. **(A)** protein bands and expression of Cosmc, T-synthase, Tn and STn antigens in MDA-MB-231 and MCF-7 detected by Western blot analysis. **(B)** proliferation ( $\times 200$ ) of MDA-MB-231 and MCF-7 cells measured by EdU assay. **(C)** protein bands and levels of proliferating-associated proteins (Ki67 and PCNA) in MDA-MB-231 and MCF-7 cells evaluated by Western blot analysis. **(D)** migration of MDA-MB-231 and MCF-7 cells measured by scratch test. **(E)** invasion ( $\times 200$ ) of MDA-MB-231 and MCF-7 cells measured by transwell assay. **(F)** apoptosis of MDA-MB-231 and MCF-7 cells measured by flow cytometry. **(G)** protein bands and levels of apoptosis-related proteins (Bcl-2, Bax and Bad) in MDA-MB-231 and MCF-7 cells evaluated by Western blot analysis. \* $p < 0.05$  vs the cells introduced with oe-NC. The above were measurement data and were expressed as mean  $\pm$  standard deviation. Comparisons between two groups were performed using an independent sample t-test. All experiments were repeated 3 times. **Abbreviations:** STn, Sialyl-Tn; EdU, 5-Ethynyl-2'-deoxyuridine; PCNA, proliferating cell nuclear antigen; Bcl-2, B-cell lymphoma-2; Bax, Bcl2 associated X; Bad, Bcl2 associated agonist of cell death; NC, negative control.

displayed that compared with the treatment with DMSO, methylation in specific sites and elevation of the methylated sites were detected after treatment with M.SssI, and the

opposite results were observed after the treatment with 5-aza-dc ( $p < 0.05$ ; **Figure 3B** and **C**). Next, ChIP was performed to measure the enrichment of methyltransferase



**Figure 3** Demethylation of the Cosmc promoter inhibits the expression of the Tn and STn antigens through the upregulation of Cosmc. (A) CpG island predicted by the MethPrimer website. MDA-MB-231 and MCF-7 cells were treated with methyltransferase M.SssI or methyltransferase inhibitor 5-aza-dc, with DMSO as control. (B) methylation of the Cosmc promoter region in MDA-MB-231 and MCF-7 cells detected by MSP. (C) methylation of Cosmc promoter region in MDA-MB-231 and MCF-7 cells determined by BSP. (D) enrichment of Dnmt1, Dnmt3a, and Dnmt3b in the Cosmc promoter region of MDA-MB-231 and MCF-7 cells evaluated by ChIP. (E and F) protein bands and expression of Cosmc, Tn and STn antigens in MDA-MB-231 and MCF-7 cells assessed by Western blot analysis. \* $p < 0.05$  vs normal breast epithelial cell line; # $p < 0.05$  vs MDA-MB-231 and MCF-7 cells treated with DMSO. The above were measurement data and were expressed as mean  $\pm$  standard deviation. Comparisons between two groups were performed using an independent sample t-test. All experiments were repeated 3 times.

**Abbreviations:** STn, Sialyl-Tn; DMSO, dimethyl sulfoxide; MSP, methylation specific polymerase chain reaction; ChIP, chromatin immunoprecipitation.

Dnmt1, Dnmt3a, and Dnmt3b in the Cosmc promoter region. The results showed that the MDA-MB-231 and MCF-7 cells exhibited significantly increased enrichment

of methyltransferases in comparison with normal breast epithelial cells. Compared to the treatment with DMSO, the treatment with M.SssI induced an increase in the

enrichment of methyltransferases, while the treatment with 5-aza-dc caused a reduction in methyltransferase enrichment ( $p < 0.05$ ) (Figure 3D). According to the results from Western blot analysis, reduced Cosmc levels and elevated expression of the Tn and STn antigens were found in MDA-MB-231 and MCF-7 cells. Compared with DMSO treatment, the treatment with M.SssI caused a reduction in the Cosmc levels and an elevation of the Tn and STn antigens. These changes were reversed following treatment with 5-aza-dc ( $p < 0.05$ ) (Figure 3E and F). Consequently, these results suggested that the demethylation of Cosmc upregulated the Cosmc levels and inhibited the expression of the Tn and STn antigens.

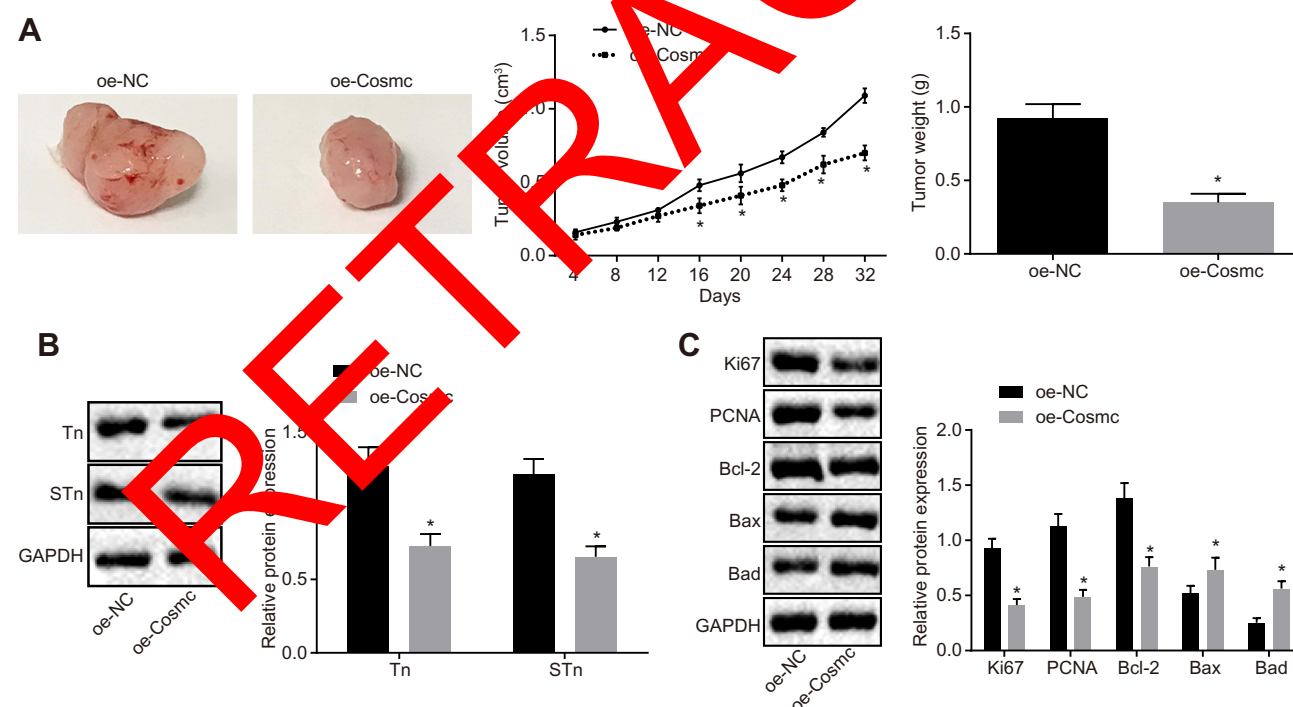
## Cosmc Elevation Represses Tumor Growth and Enhances the Apoptosis of Breast Cancer Cells in vivo

To further investigate the effects of Cosmc on breast cancer cell growth in vivo, stably transfected MDA-MB-231 cells were inoculated into nude mice followed by measurement of tumor size and weight in nude mice. The delivery of oe-Cosmc

resulted in significantly decreased tumor size and weight ( $p < 0.05$ ) (Figure 4A). Western blot analysis was conducted to determine the expression of Tn, STn, proliferating-associated proteins (Ki67 and PCNA) and apoptosis-related proteins (Bcl-2, Bax and Bad). The results showed that the delivery of oe-Cosmc contributed to reduced expression of Tn, STn, Bcl-2, Ki67, and PCNA and increased expression of Bax and Bad ( $p < 0.05$ ) (Figure 4B-C). Therefore, our in vivo findings confirmed that restoration of Cosmc inhibited tumor growth and accelerated apoptosis of breast cancer cells in vivo.

## Discussion

Breast cancer is one of the most common cancers and the main cancer-associated death causes with high occurrence and mortality among women.<sup>19</sup> Cosmc, a type of molecular chaperone, interacts with  $\alpha$ -synthase to facilitate the synthesis of the Tn antigen and plays a role in cancer progression.<sup>20</sup> Recently, DNA methylation offers promising chances for constructing a more comprehensive molecular architecture of breast cancer.<sup>22</sup> Therefore, our study aimed to explore the regulatory roles of Cosmc promoter methylation in breast cancer progression.



**Figure 4** Cosmc overexpression facilitates tumor growth in vivo. Nude mice received an injection of MDA-MB-231 cells stably transfected with oe-Cosmc to restore the expression of Cosmc. **(A)** tumor size, volume, and weight in nude mice. **(B)** protein bands and expression of Tn and STn antigens measured by Western blot analysis. **(C)** protein bands and expression of Ki67, PCNA, Bcl-2, Bax and Bad determined by Western blot analysis. \* $p < 0.05$  vs the delivery of oe-NC treated MDA-MB-231 cells. The above were measurement data and were expressed as mean  $\pm$  standard deviation.  $n = 12$ . Comparisons between two groups were performed using an independent sample t-test, and comparisons of tumor size at various time points are analyzed by repeated-measures analysis of variance.

**Abbreviations:** STn, Sialyl-Tn; PCNA, proliferating cell nuclear antigen; Bcl-2, B-cell lymphoma-2; Bax, Bcl2 associated X; Bad, Bcl-2 associated agonist of cell death; NC, negative control.



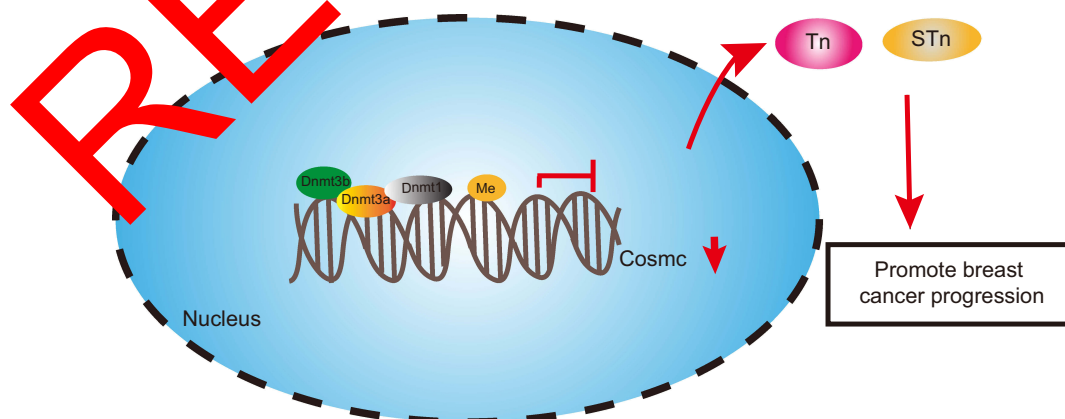
Collectively, the data from this study revealed that the demethylation of the Cosmc promoter inhibited breast cancer progression through suppression of the expression of the Tn and STn antigens.

The initial finding of our study revealed that Cosmc is lowly expressed in breast cancer tissues and cells. Our study showed that Cosmc overexpression decreased levels of Bcl-2, Ki67, and PCNA and elevated levels of Bax and Bad, thus inducing the inhibition of cell growth as well as promoting apoptosis in breast cancer. The Bcl-2 family members can form an interaction network among proteins that play regulatory roles in apoptosis through the permeabilization of the outer membrane of the mitochondria.<sup>23</sup> Bcl-2, an anti-apoptotic member of the Bcl-2 family, is regarded as an oncogene capable of inducing various types of cancer.<sup>24</sup> Bax is a protein encoded in higher eukaryotes that control the death of cells by apoptosis.<sup>25</sup> Bad is an apoptotic protein from the Bcl-2 family and its inhibition plays an inhibitory role in the survival of breast cancer stem cells.<sup>26</sup> PCNA is required for reliable DNA replication, which prepares a molecular platform for a great number of protein-DNA and protein-protein interactions at the replication fork.<sup>27</sup> Ki67 acts as a prognostic factor to have a potential impact on prognosis prediction in patients with breast cancer after neoadjuvant chemotherapy. Consistently, an in vivo nude mice model in this study further confirmed that Cosmc overexpression inhibited tumor formation and promoted cell apoptosis.

Cosmc overexpression increased the expression of Cosmc and T-synthase while decreasing the expression of the Tn and STn antigens. Moreover, suppression of Cosmc at the transcriptional level has been detected in human cancers, and its elevated expression exerts an inhibitory effect on

tumor growth by repressing the expression of the Tn and STn antigens.<sup>29</sup> The Tn and STn antigens belong to the tumor-associated carbohydrate antigens capable of controlling the interaction among carbohydrates.<sup>30</sup> Overexpression of the Tn antigen has been detected in breast cancer tissues, which is correlated with a poor prognosis for overall survival and progression-free survival of breast cancer.<sup>31</sup> Moreover, the expression of STn has initially been found at the luminal or apical surface of tissues that appears in the early stages of tumors and has been identified as a potential therapeutic target and a diagnosis and prognostic marker for cancer therapy.<sup>14</sup> Also, STn has been revealed to be expressed in breast cancer cells and its expression leads to resistance to chemotherapy and adverse prognosis in breast cancer.<sup>8</sup> Thus, loss of Cosmc increases the expression of the Tn and STn antigens, which may contribute to the progression of breast cancer.

Lastly, our experiments confirmed that Cosmc promoter methylation was reduced in breast cancer cells. In our current work, we provided evidence that Cosmc promoter methylation downregulated the Cosmc levels, resulting in the expression of the Tn and STn antigens. Hypermethylation of the gene promoter regions can cause the malfunction of genes in multiple human cancers when accompanied by the absence of heterozygosity of the same locus.<sup>32</sup> Also, abnormal gene-specific promoter hypermethylation is closely associated with the occurrence and development of breast cancer.<sup>33</sup> The absence of Cosmc contributes to the expression of the Tn antigen through the regulation of T-synthase, which is related to the development and progression of various human diseases, including cancer.<sup>34,35</sup> For instance, a recent study has found that Cosmc deficient pancreatic cancer cell line



**Figure 5** The molecular mechanism involving the regulatory roles of Cosmc/Tn/STn in breast cancer. Hypermethylation of the Cosmc promoter induced Tn and STn antigen exposure to promote the occurrence and progression of breast cancer by inhibiting Cosmc levels, while demethylation of Cosmc led to opposite results.

**Abbreviation:** STn, Sialyl-Tn.

tends to induce the expression of the Tn antigen.<sup>36</sup> Sun et al have further proved that Cosmc promoter hypermethylation induces the loss of Cosmc and consequent Tn expression in colorectal cancer cell lines.<sup>37</sup>

## Conclusions

Taken together, Cosmc promoter hypermethylation caused the downregulation of Cosmc and promoted the expression of the Tn and STn antigens, which may contribute to the progression of breast cancer (Figure 5). These findings underscore the carcinogenic roles of Cosmc promoter hypermethylation in breast cancer. This study also substantiates that the restoration of Cosmc could be achieved by demethylation, and the anti-tumor effects of Cosmc overexpression have been corroborated both in vitro and in vivo, suggesting Cosmc demethylation as a promising therapeutic strategy for cancer treatment. However, a more comprehensive conclusion about the effects of Cosmc promoter hypermethylation on breast cancer cannot be made due to the limited information available. Therefore, these regulatory mechanisms should be monitored rigorously and reported appropriately in future clinical trials.

## Consent for Publication

Consent for publication was obtained from the participants.

## Ethics Statement

The animal experiments were performed following the recommendations from the Guide for the Care and Use of Laboratory Animals of the National Institutes of Health. The protocols for animal experiments were approved by the Institutional Animal Care and Use Committee of Beijing Chao-Yang Hospital.

## Data Sharing Statement

The datasets generated/analyzed during the current study are available.

## Acknowledgments

We would like to acknowledge the helpful comments received from our reviewers for this paper.

## Author Contributions

Feng Xu and Dong Wang share first authorship. Feng Xu and Dong Wang designed the study. JianXiu Cui and Jie Li collated the data, carried out data analysis and produced the initial draft of the manuscript. Hongchuan Jiang contributed to drafting the manuscript. All authors contributed

to data analysis, drafting or revising the article, gave final approval of the version to be published, and agree to be accountable for all aspects of the work.

## Funding

This study was supported by the Youth Project of National Natural Science Foundation of China (No. 81702587).

## Disclosure

The authors declare no conflict of interest.

## References

1. Harbeck N, Gnant M. Breast cancer. *Lancet*. 2017;389(10074):1134–1150. doi:10.1016/S0140-6736(17)31891-8
2. Woolston C. Breast cancer. *Nature*. 2015;527(7578):S101. doi:10.1038/527S101a
3. Miller KD, Siegel RL, Lin CC, et al. Cancer treatment and survivorship statistics, 2016. *CA Cancer J Clin*. 2016;66(4):271–289. doi:10.3322/caac.21355
4. Runowicz CD, Leach CR, Henry NL, et al. American Cancer Society/American Society of Clinical Oncology Breast Cancer survivorship care guideline. *CA Cancer J Clin*. 2016;66(1):43–73. doi:10.3322/caac.21319
5. Tolan L. Breast cancer targeted therapy: successes and challenges. *Lancet*. 2017;389(10087):2350. doi:10.1016/S0140-6736(17)31662-8
6. Widschwendter M, Jones A, Evans I, et al. Epigenome-based cancer prediction: rationale, opportunities and challenges. *Nat Rev Clin Oncol*. 2018;15(5):292–309. doi:10.1038/nrclinonc.2018.30
7. Visvanathan K, Fackler MS, Zhang Z, et al. Monitoring of Serum DNA methylation as an early independent marker of response and survival in metastatic breast cancer: TBCRC 005 prospective biomarker study. *J Clin Oncol*. 2017;35(7):751–758. doi:10.1200/JCO.2015.66.2080
8. Beatson R, Maurstad G, Picco G, et al. The breast cancer-associated glycoforms of MUC1, MUC1-Tn and sialyl-Tn, are expressed in COSMC wild-type cells and bind the C-type lectin MGL. *PLoS One*. 2015;10(5):e0125994. doi:10.1371/journal.pone.0125994
9. Aryal RP, Ju T, Cummings RD. Tight complex formation between Cosmc chaperone and its specific client non-native T-synthase leads to enzyme activity and client-driven dissociation. *J Biol Chem*. 2012;287(19):15317–15329. doi:10.1074/jbc.M111.312587
10. Mi R, Song L, Wang Y, et al. Epigenetic silencing of the chaperone cosmc in human leukocytes expressing tn antigen. *J Biol Chem*. 2012;287(49):41523–41533. doi:10.1074/jbc.M112.371989
11. Fu C, Zhao H, Wang Y, et al. Tumor-associated antigens: tn antigen, sTn antigen, and T antigen. *HLA*. 2016;88(6):275–286. doi:10.1111/tan.12900
12. Shi C, Xu X, Yu X, et al. CD3/CD28 dynabeads induce expression of tn antigen in human t cells accompanied by hypermethylation of the cosmc promoter. *Mol Immunol*. 2017;90:98–105. doi:10.1016/j.molimm.2017.06.250
13. Munkley J, Oltean S, Vodak D, et al. The androgen receptor controls expression of the cancer-associated sTn antigen and cell adhesion through induction of ST6GalNAc1 in prostate cancer. *Oncotarget*. 2015;6(33):34358–34374. doi:10.18632/oncotarget.6024
14. Munkley J. The Role of Sialyl-Tn in Cancer. *Int J Mol Sci*. 2016;17(3):275. doi:10.3390/ijms17030275
15. Jiang Y, Liu Z, Xu F, et al. Aberrant O-glycosylation contributes to tumorigenesis in human colorectal cancer. *J Cell Mol Med*. 2018;22(10):4875–4885. doi:10.1111/jcmm.13752

16. Ning H, Albersen M, Lin G, Lue TF, Lin CS. Effects of EdU labeling on mesenchymal stem cells. *Cytotherapy*. 2013;15(1):57–63. doi:10.1016/j.jcyt.2012.10.010
17. Niu L, Liu A, Xu W, Yang L, Zhu W, Gu Y. Downregulation of peroxiredoxin II suppresses the proliferation and metastasis of gastric cancer cells. *Oncol Lett*. 2018;16(4):4551–4560. doi:10.3892/ol.2018.9208
18. Ju T, Cummings RD. A unique molecular chaperone Cosmc required for activity of the mammalian core 1 beta 3-galactosyltransferase. *Proc Natl Acad Sci U S A*. 2002;99(26):16613–16618. doi:10.1073/pnas.262438199
19. Bray F, Ferlay J, Soerjomataram I, Siegel RL, Torre LA, Jemal A. Global cancer statistics 2018: GLOBOCAN estimates of incidence and mortality worldwide for 36 cancers in 185 countries. *CA Cancer J Clin*. 2018;68(6):394–424. doi:10.3322/caac.21492
20. Huang J, Che MI, Lin NY, et al. The molecular chaperone Cosmc enhances malignant behaviors of colon cancer cells via activation of Akt and ERK. *Mol Carcinog*. 2014;53 Suppl 1:E62–71. doi:10.1002/mc.22011
21. Yu X, Du Z, Sun X, Shi C, Zhang H, Hu T. Aberrant Cosmc genes result in Tn antigen expression in human colorectal carcinoma cell line HT-29. *Int J Clin Exp Pathol*. 2015;8(3):2590–2602.
22. Cancer Genome Atlas Network. Comprehensive molecular portraits of human breast tumours. *Nature*. 2012;490(7418):61–70. doi:10.1038/nature11412
23. Renault TT, Dejean LM, Manon S. A brewing understanding of the regulation of Bax function by Bcl-xL and Bcl-2. *Mech Ageing Dev*. 2017;161(PtB):201–210. doi:10.1016/j.mad.2016.04.007
24. Ebrahim AS, Sabbagh H, Liddane A, Raufi A, Kandouz M, Al-Katib A. Hematologic malignancies: newer strategies to counter the BCL-2 protein. *J Cancer Res Clin Oncol*. 2016;142(9):2013–2022. doi:10.1007/s00432-016-2144-1
25. Westphal D, Dewson G, Czabotar PE, Kluck RM. Molecular biology of Bax and Bak activation and action. *Biochim Biophys Acta*. 2011;1813(4):521–531. doi:10.1016/j.bbamcr.2010.12.019
26. Sastry KS, Al-Muftah MA, Li P, et al. Targeting proapoptotic protein BAD inhibits survival and self-renewal of cancer stem cells. *Death Differ*. 2014;21(12):1936–1949. doi:10.1007/s12073-014-140
27. Mailand N, Gibbs-Seymour I, Bekker-Jensen S. Regulation of PCNA-protein interactions for genome stability. *Nat Rev Mol Cell Biol*. 2013;14(5):269–282. doi:10.1038/nrm3562
28. Tanei T, Shimomura A, Shimazu K, et al. Prognostic significance of Ki67 index after neoadjuvant chemotherapy in breast cancer. *Eur J Surg Oncol*. 2011;37(2):155–161. doi:10.1016/j.ejso.2010.10.009
29. Zeng J, Mi R, Wang Y, et al. Promoters of human cosmc and t-synthase genes are similar in structure, yet different in epigenetic regulation. *J Biol Chem*. 2015;290(31):19018–19033. doi:10.1074/jbc.M115.654244
30. Sletmoen M, Gerken TA, Stokke BT, Burchell J, Brewer CF. Tn and STn are members of a family of carbohydrate tumor antigens that possess carbohydrate-carbohydrate interactions. *Glycobiology*. 2018;28(7):437–442. doi:10.1093/glycob/cwy032
31. Kolbl AC, Jeschke U, Friese K, Andersen U. The role of TF- and Tn-antigens in breast cancer metastasis. *Histo Histopathol*. 2016;31(6):613–621. doi:10.14670/HH-15-0722
32. Shames DS, Girard L, Gao B, et al. A genome-wide screen for promoter methylation in lung cancer identifies novel methylation markers for multiple malignancies. *PLoS Med*. 2006;3(12):e486. doi:10.1371/journal.pmed.0030486
33. Kang S, Kim B, Park SB, et al. Stage-specific methylome screen identifies that EFL is downregulated by promoter hypermethylation in breast cancer. *Int J Cancer*. 2013;143(5):1659–1665. doi:10.3892/ijco.2012.2095
34. Hanes MS, Meinen KW, Cummings RD. Biochemical characterization of functional domains of the chaperone Cosmc. *PLoS One*. 2011;6(6):e0180242. doi:10.1371/journal.pone.0180242
35. Ju T, Aryal RP, Kudelka MR, Wang Y, Cummings RD. The Cosmc connection to the Tn antigen in cancer. *Cancer Biomark*. 2014;14(1):63–81. doi:10.3233/CBM-130375
36. Hofmann B, Schluter L, Lange P, et al. COSMC knockdown mediated by siRNA and N-glycosylation promotes oncogenic properties in pancreatic cancer. *Mol Cancer*. 2015;14:109. doi:10.1186/s12943-015-0386-1
37. Xu W, Ju T, Cummings RD. Differential expression of Cosmc, T-synthase and mucins in Tn-positive colorectal cancers. *BMC Cancer*. 2018;18(1):827. doi:10.1186/s12885-018-4708-8

## Cancer Management and Research

### Publish your work in this journal

Cancer Management and Research is an international, peer-reviewed open access journal focusing on cancer research and the optimal use of preventative and integrated treatment interventions to achieve improved outcomes, enhanced survival and quality of life for the cancer patient.

Submit your manuscript here: <https://www.dovepress.com/cancer-management-and-research-journal>

Dovepress

The manuscript management system is completely online and includes a very quick and fair peer-review system, which is all easy to use. Visit <http://www.dovepress.com/testimonials.php> to read real quotes from published authors.