

# A Comparison Between the Online Prediction Models CancerMath and PREDICT as Prognostic Tools in Thai Breast Cancer Patients

This article was published in the following Dove Press journal:  
*Cancer Management and Research*

Nuanphan Polchai<sup>1</sup>  
Doonyapat Sa-nguanraksa<sup>1</sup>  
Warapan Numprasit<sup>1</sup>  
Thanawat Thumrongtaradol<sup>1</sup>  
Eng O-charoenrat<sup>2</sup>  
Pornchai O-charoenrat<sup>1</sup>

<sup>1</sup>Division of Head Neck and Breast Surgery, Department of Surgery, Faculty of Medicine, Siriraj Hospital, Mahidol University, Bangkok 10700, Thailand;

<sup>2</sup>Faculty of Medical Sciences, University College London, London, UK

**Background and Purpose:** Web-based prognostic calculators have been developed to inform about the use of adjuvant systemic treatments in breast cancer. CancerMath and PREDICT are two examples of web-based prognostic tools that predict patient survival up to 15 years after an initial diagnosis of breast cancer. The aim of this study is to validate the use of CancerMath and PREDICT as prognostic tools in Thai breast cancer patients.

**Patients and Methods:** A total of 615 patients who underwent surgical treatment for stage I to III breast cancer from 2003 to 2011 at the Division of Head Neck and Breast Surgery, Department of Surgery, Siriraj Hospital, Mahidol University, Thailand were recruited. A model-predicted overall survival rate (OS) and the actual OS of the patients were compared. The efficacy of the model was evaluated using receiver-operating characteristic (ROC) analysis.

**Results:** For CancerMath, the predicted 5-year OS was 88.9% and the predicted 10-year OS was 78.3% ( $p < 0.001$ ). For PREDICT, the predicted 5-year OS was 83.1% and the predicted 10-year OS was 72.0% ( $p < 0.001$ ). The actual observed 5-year OS was 90.8% and the observed 10-year OS was 82.6% ( $p < 0.001$ ). CancerMath demonstrated better predictive performance than PREDICT in all subgroups for both 5- and 10-year OS. In addition, there was a marked difference between CancerMath and observed survival rates in patients who were older as well as patients who were stage N3. The area under the ROC curve for 5-year OS in CancerMath and 10-year OS was 0.74 (95% CI; 0.65–0.82) and 0.75 (95% CI; 0.68–0.82). In the PREDICT group, the area under the ROC curve for 5-year OS was 0.78 (95% CI; 0.71–0.85) and for 10-year OS, it was 0.78 (95% CI; 0.71–0.84).

**Conclusion:** CancerMath and PREDICT models both underestimated the OS in Thai breast cancer patients. Thus, a novel prognostic model for Thai breast cancer patients is required.

**Keywords:** breast cancer, predictive model, CancerMath, PREDICT, survival

## Introduction

Breast cancer is a heterogeneous disease in terms of various biological and clinical behaviors.<sup>1,2</sup> The prognosis of early breast cancer has significantly improved with adjuvant treatments. The combinations of optimal chemoendocrine regimens have resulted in 57% and 45% reductions in 15-year mortality for women under the age of 50 and those aged 50–69, respectively.<sup>3</sup> However, among breast cancer patients who meet the eligibility criteria for adjuvant systemic therapy, it has been argued that up to 60% of these patients experienced loss of quality of life due to toxicity with little or no survival benefit.<sup>4</sup> The combined impact on quality of life as well as

Correspondence: Pornchai O-charoenrat  
Division of Head Neck and Breast Surgery, Department of Surgery, Faculty of Medicine, Siriraj Hospital, Mahidol University, 2 Wanglang Road Bangkoknoi, Bangkok 10700, Thailand  
Tel +66 2419 2837  
Email pornchai.och@mahidol.ac.th

a rise in financial costs mean the avoidance of unnecessary treatment is a crucial goal for patients, oncologists, and policymakers. As a result, many models relating to risk prediction have been developed in order to aid oncologists in selecting patients who would benefit overall from systemic therapy.

At present, a number of prognostic tools such as multi-gene assays or free web-based prognostic calculators are available to aid decision-making in administering adjuvant systemic therapy. In more economically-developed nations, commercial gene expression-based prognostic tests such as Oncotype Dx and Mammprint are widely implemented but these tools are inaccessible for many countries due to their expensive costs.<sup>5</sup> Therefore, online prognostic calculators are valuable in clinical practice. There are several free web-based prognostic calculators to predict the survival of early breast cancer such as Adjuvant! Online,<sup>6</sup> CancerMath,<sup>7</sup> and PREDICT.<sup>8</sup> These have been validated in Western populations and deemed to be calibrated and accurate in discrimination.<sup>9–11</sup>

CancerMath was proposed in 2009 (<http://www.life.math.net/cancer/breastcancer/outcome/index.php>). It predicts the risk of mortality for the first 15 years after diagnosis, any reduction in life expectancy, and any impact of adjuvant treatments. PREDICT, another prognostic model, was established in 2010 (<https://breast.predict.nhs.uk>). The newest version of PREDICT provides predicted 5-, 10-, and 15-year overall survival (OS) with additional benefits of each adjuvant therapy. There have been a small number of studies to confirm the prognostic ability of these programs in Asian populations.<sup>12,13</sup> Despite widespread use of both CancerMath and PREDICT, data comparing the validity between these two models are limited and controversial. Lass E and colleagues demonstrated that CancerMath and PREDICT had similar outcomes in American and Canadian breast cancer patients who were estrogen receptor (ER)-positive and human epidermal growth factor receptor 2 (HER2)-negative.<sup>14</sup> On the other hand, a study comparing the two models in the United Kingdom illustrated that PREDICT outperformed CancerMath in terms of discriminatory accuracy, calibration, and clinical utility.<sup>15</sup>

Genetic backgrounds, socio-economic status, and cultures in Asia are all different factors that play distinct roles in the prognosis and treatment of breast cancer among Asians and people in America and Europe. Thus, the aim of this study was to validate the CancerMath and PREDICT models in Thai breast cancer patients.

## Materials and Methods

### Study Population

Breast cancer patients who underwent surgical treatment for stage I to III breast cancer, according to the American Joint Committee on Cancer Staging Manual seventh edition, from 2003 to 2011 at the Division of Head Neck and Breast Surgery, Department of Surgery, Siriraj Hospital, Mahidol University, Thailand were recruited. No informed consent was required because this study collected existing data in a manner that the subjects could not be identified. This study was approved by the Siriraj Institutional Review Board (certificate of approval number Si 732/2018) and conducted in accordance with the Declaration of Helsinki. The inclusion criteria of patients were age between 25 and 85 years old with unilateral breast cancer with tumor size T1-T3, available axillary nodal status, no distant metastasis, available ER/progesterone receptor (PR)/HER2/and Ki-67 status, and those who had received complete surgical treatment (Mastectomy or breast-conserving surgery followed by radiotherapy). Exclusion criteria were those who were receiving neoadjuvant therapy whose tumor size, tumor grade, or adjuvant treatment status were unknown. Patients who were lost to follow-up after surgery were also excluded. Patient data was reviewed from their medical records. The ER and PR status were defined as positive when there was 1% to 100% of tumor nuclei positive.<sup>16</sup> HER2 immunohistochemistry was interpreted as follows: score 0 and 1+ =negative; score 2+ =equivocal; and score 3+ =positive. HER2 equivocal by immunohistochemistry was further determined by dual in situ hybridization (DISH). The ratio of HER2/CEP17 of  $\geq 2$  was defined as positive HER2.<sup>17</sup> Follow-up time was calculated from the date of surgery to the date of death or date of last follow-up. The date of last data collection was December 1st, 2018. The final dataset for validation of 5-year and 10-year survival was composed of 545 and 397 patients, respectively.

### Predicted 5- and 10-Year OS by CancerMath

For Breast Cancer Treatment Outcome Calculator using the CancerMath model, information for each patient was manually entered. This information included age at diagnosis, tumor diameter (cm), number of positive lymph nodes, ER/PR/HER2 status (positive, negative, or unknown), histologic type (ductal, lobular, others, or unknown), grade (1, 2, 3, undifferentiated, or unknown), hormonal therapy (none, tamoxifen, aromatase inhibitor (AI), tamoxifen followed by

AI, ovarian ablation, or ovarian ablation plus tamoxifen), and chemotherapy (none, first-generation, second-generation, or third-generation regimens). For chemotherapy, first-generation regimens consisted of cyclophosphamide/methotrexate/5-fluorouracil (CMF) and doxorubicin/cyclophosphamide (AC). Second-generation regimens included AC followed by taxanes, docetaxel/cyclophosphamide (DC), 5-fluorouracil/epirubicin/cyclophosphamide (FEC), 5-fluorouracil/doxorubicin/cyclophosphamide (FAC), and cyclophosphamide/doxorubicin/5-fluorouracil (CAF). Docetaxel/doxorubicin/cyclophosphamide (TAC) and FEC followed by docetaxel were categorized as third-generation regimens. In every entry, the program predicted survival curves up to 15 years after diagnosis for 5 conditions: OS, OS with therapy, breast cancer-specific survival (BCSS), BCSS with therapy, and non-cancer related survival. Predicted 5 and 10-year OS with therapy were extracted for data analysis.

## Predicted 5- and 10-Year OS by PREDICT

For the PREDICT model version 2.1, the data used to calculate predicted OS included age at diagnosis (between 25 and 85), postmenopausal status (yes, no, or unknown), ER status (positive or negative), HER2 status (positive, negative, or unknown), Ki-67 status ( $>10\%$ ,  $\leq 10\%$ , or unknown), invasive tumor size (mm), tumor grade (1, 2, or 3), detection method (screening, symptom, or unknown), number of positive nodes, hormone therapy (no or yes), chemotherapy (none, second generation, or third generation), trastuzumab (no or yes), and bisphosphonates (no or yes). Categorization of chemotherapy generation was different from CancerMath. There was no first-generation regimen included. Anthracycline-based regimens such as FEC were defined as second-generation chemotherapy and chemotherapy regimens that contained taxanes were categorized as third-generation chemotherapy. Because of this difference, first-generation regimens were registered as second-generation regimens. The calculator predicted 5-, 10-, and 15-year OS for 5 scenarios as follows; without adjuvant treatment, additional benefit of adjuvant hormone therapy, additional benefit of adjuvant chemotherapy, additional benefit of trastuzumab, and additional benefit of bisphosphonates. Predicted OS for 5 and 10 years with additional benefit of adjuvant treatment were collected.

## Statistical Analysis

Kaplan-Meier analysis was used to estimate the observed 5 and 10-year OS in the entire study population and within subgroups. The CancerMath and PREDICT 5- and 10-year

OS were calculated by individual predicted survival probabilities. The *t*-test and *p*-values of  $<0.05$  from the comparison between model-predicted OS and patients' actual OS represented a significant difference between predicted and observed survival. Moreover, the multivariable regression coefficients were applied to estimate the relation between parameters. The difference between actual and predicted survival and the ability of the models was analyzed using receiver-operating characteristic (ROC) analysis. The area under the ROC curve (AUC) demonstrated the discriminatory performance of the model. An AUC of 0.5 demonstrated no discriminative performance and an AUC of 1.0 illustrated perfect discrimination. Analyses were performed using SPSS for Windows version 22.0 (SPSS Inc., Chicago, IL, USA).

## Results

### Patients' Characteristics

A total of 615 patients were recruited. The median age at diagnosis was 50 years (27–85 years). Most of the patients had invasive ductal carcinoma. The uncommon histological types were 4 lobular carcinomas (0.7%), 18 mucinous carcinomas (2.9%), and 11 other carcinomas (1.8%). Among 584 patients (95.0%) who received systemic therapy, 407 patients (66.2%) received chemotherapy and 414 patients (67.3%) were treated with endocrine therapy. Most of the patients were treated with first-generation chemotherapy regimens ( $n=258$ , 42.0%) and tamoxifen ( $n=195$ , 31.7%) as endocrine therapy (Table 1). The median follow-up time was 128.7 months (2.5–189.3 months).

### Comparison of Observed and Model Predicted 5- and 10-Year OS

Overall, CancerMath and PREDICT models underestimated both 5- and 10-year OS. The predicted 5-year OS by CancerMath and PREDICT were 88.9% and 83.1%, respectively, whereas the observed 5-year OS was 90.8% ( $p<0.001$ ). The predicted 10-year OS via CancerMath and PREDICT were 78.3% and 72.0%, respectively, whereas the observed 10-year OS was 82.6% ( $p<0.001$ ). Additionally, CancerMath had a higher accuracy in prediction than PREDICT in all subgroups for both 5- and 10-year OS, especially for breast cancer patients with T3 tumors, metastases in 4 or more lymph nodes, or who were classified as stage III (Table 2).

CancerMath demonstrated a more noticeable underprediction of OS in patients older than 60 years (mean difference  $-6.3\%$  for 5-year OS and  $-2.1\%$  for 10-year OS), tumor size

**Table I** Baseline Characteristics of 615 Breast Cancer Patients

Characteristics	n (%)
Age (year), median (min-max)	50 (27–85)
Menstruation status	
Pre-menopause	301 (48.9)
Post-menopause	314 (51.1)
Detection method	
Symptomatic	568 (92.4)
Screening-detected	47 (7.6)
Tumor size (cm), median (min-max)	2.5 (0.1–17.5)
Tumor grade	
I	66 (10.7)
II	337 (54.8)
III	212 (34.5)
Tumor histology	
Ductal	582 (94.6)
Others	33 (5.4)
Nodal status	
Positive	261 (42.4)
Negative	354 (57.6)
Number of positive nodes, median (min-max)	3 (0–52)
Estrogen receptor status	
Positive	380 (61.8)
Negative	235 (38.2)
Progesterone receptor status	
Positive	354 (57.6)
Negative	261 (42.4)
HER2 status	
Positive	169 (27.5)
Negative	396 (64.4)
Unknown	50 (8.1)
Ki-67 status	
>10%	8 (1.3)
≤10%	5 (0.8)
Unknown	602 (97.9)
Pathological stage	
I	195 (31.7)
II	293 (47.6)
III	127 (20.7)
Surgery	
Mastectomy	421 (68.5)

(Continued)

**Table I** (Continued).

Characteristics	n (%)
Breast-conserving surgery	194 (31.5)
Adjuvant systemic treatment	
Yes	584 (95.0)
No	31 (5.0)
Adjuvant chemotherapy	
No	208 (33.8)
1st generation	258 (42.0)
2nd generation	137 (22.2)
3rd generation	12 (2.0)
Adjuvant hormonal therapy	
No	201 (32.7)
Tamoxifen	195 (31.7)
Aromatase inhibitor (AI)	84 (13.7)
Tamoxifen followed by AI	117 (19.0)
Ovarian ablation plus tamoxifen	18 (2.9)
Status	
Alive without disease	464 (75.4)
Alive with recurrence	78 (12.7)
Death with disease	60 (9.8)
Death with other causes	13 (2.1)

smaller than 2 cm (mean difference −4.3% for 5-year OS and −7.2% for 10-year OS), and ER or PR positive with HER2-negative subtype (mean difference −4.4% for 5-year OS and −6.6% for 10-year OS). Furthermore, the underestimation of OS also occurred in patients who received adjuvant treatment with third-generation chemotherapy (mean difference −11.3% for 5-year OS and −24.4% for 10-year OS) or hormonal therapy containing AI (mean difference −6.6% for 5-year OS and −11.1% for 10-year OS).

In contrast, CancerMath significantly overpredicted survival in patients with N3 ( $\geq 10$  positive nodes) (mean difference 15.1% for 5-year OS and 11.8% for 10-year OS) and patients receiving ovarian ablation plus tamoxifen (mean difference 8.3% for 5-year OS and 7.2% for 10-year OS). The model seemed to overestimate short-term OS in triple-negative breast cancer, even though it was not appeared in predicted long-term OS as shown in [Tables 2 and 3](#).

According to multiple regression analysis, the factors that revealed significantly large standardized coefficients were age >60 year (0.39 at 5-year OS and 0.43 at 10-year OS), N3 status (0.21 at 5-and 10-year OS), and stage III (0.28 at 5-year OS and 0.35 at 10-year OS).

**Table 2** Observed and Model-Predicted 5-Year OS Stratified by Patients' Characteristics

	N (%)	Observed OS (%) (SE)	CancerMath OS (Mean) (%)	PREDICT OS (Mean) (%)	Difference 1 (%) (95% CI) (CancerMath-Observed)	P value1	Difference 2 (%) (95% CI) (PREDICT-Observed)	P value2	Difference 3 (%) (95% CI) (CancerMath -PREDICT)	P value3
All patients	545	90.8 (0.012)	88.9	83.1	-1.9 (-2.5, -1.3)	<0.001	-7.7 (-9.1, -6.2)	<0.001	5.8 (4.7, 6.8)	<0.001
Age at diagnosis (yr)										
≤60	434	91.7 (0.013)	90.9	84.9	-0.8 (-1.3, -0.3)	0.002	-6.8 (-8.3, -5.2)	<0.001	6.0 (4.8, 7.1)	<0.001
>60	111	87.4 (0.032)	81.1	76.1	-6.3 (-8.0, -4.6)	<0.001	-11.3 (-15.1, -7.5)	<0.001	5.0 (2.3, 7.7)	<0.001
Tumor size (mm)										
≤20	248	96.0 (0.012)	91.8	89.9	-4.3 (-5.0, -3.5)	<0.001	-6.1 (-7.3, -4.9)	<0.001	1.8 (1.0, 2.7)	<0.001
21–50	263	87.1 (0.021)	87.2	79.8	0.1 (-0.8, 1.0)	0.785	-7.3 (-9.6, -5.0)	<0.001	7.4 (5.7, 9.1)	<0.001
>50	34	82.4 (0.065)	81.3	59.4	-1.1 (-3.6, 1.4)	0.373	-23.0 (-31.0, -15.0)	<0.001	21.9 (15.0, 28.7)	<0.001
Tumor grade										
I	63	95.2 (0.027)	92.7	94.2	-2.5 (-4.4, -0.6)	0.009	-1.0 (-2.5, 0.5)	0.175	-1.5 (-2.1, -1.0)	<0.001
II	294	93.9 (0.014)	90.0	86.7	-3.9 (-4.7, -3.2)	<0.001	-7.2 (-8.8, -5.5)	<0.001	3.3 (2.1, 4.5)	<0.001
III	188	84.6 (0.026)	86.0	73.9	1.4 (0.3, 2.4)	0.010	-10.8 (-13.6, -7.9)	<0.001	12.1 (10.0, 14.3)	<0.001
Tumor histology										
Ductal	514	90.9 (0.013)	88.7	82.7	-2.2 (-2.8, -1.6)	<0.001	-8.2 (-9.7, -6.7)	<0.001	6.0 (4.9, 7.1)	<0.001
Lobular	4	100	93.3	91.5	-6.8 (-16.7, 3.2)	0.119	-8.5 (-27.1, 10.1)	0.242	1.8 (-7.0, 10.5)	0.570
Others	27	88.9 (0.060)	92.3	90.3	3.4 (0.9, 5.9)	0.010	1.4 (-2.2, 5.0)	0.433	2.0 (0.1, 3.9)	0.044
Number of positive nodes										
0	320	95.3 (0.012)	90.7	89.4	-4.6 (-5.3, -3.9)	<0.001	-5.9 (-6.8, -4.9)	<0.001	1.3 (0.7, 1.8)	<0.001
1–3	129	87.6 (0.029)	88.7	82.8	1.1 (-0.1, 2.3)	0.060	-4.8 (-7.2, -2.4)	<0.001	5.9 (4.3, 7.6)	<0.001
4–9	54	92.6 (0.036)	86.2	72.3	-6.4 (-8.2, -4.7)	<0.001	-20.3 (-26.4, -14.1)	<0.001	13.8 (9.1, 18.6)	<0.001
≥10	42	64.3 (0.074)	79.4	50.0	15.1 (12.4, 17.8)	<0.001	-14.3 (-22.3, -6.3)	0.001	29.4 (23.0, 35.8)	<0.001
Biological subtypes										
Luminal and HER2 -	267	95.5 (0.013)	91.1	90.1	-4.4 (-5.2, -3.7)	<0.001	-5.5 (-6.8, -4.1)	<0.001	1.0 (0.2, 2.1)	0.052
Luminal and HER2 +	71	91.5 (0.033)	89.5	87.6	-2.0 (-3.5, -0.5)	0.009	-3.9 (-6.5, -1.4)	0.003	1.9 (0.2, 3.6)	0.027
HER 2 overexpression	75	81.3 (0.045)	82.9	64.8	1.6 (-0.2, 3.5)	0.080	-16.5 (-21.5, -11.5)	<0.001	18.1 (14.3, 22.0)	<0.001
Triple negative	88	83.0 (0.040)	86.7	73.3	3.7 (2.1, 5.3)	<0.001	-9.7 (-13.7, -5.7)	<0.001	13.4 (10.7, 16.1)	<0.001
Pathological stage										
I	179	98.3 (0.010)	92.5	91.9	-5.8 (-6.7, -5.0)	<0.001	-6.4 (-7.4, -5.5)	<0.001	0.6 (0.1, 1.2)	0.043

(Continued)

Table 2 (Continued).

	N (%)	Observed OS (%) (SE)	CancerMath OS (Mean) (%)	PREDICT OS (Mean) (%)	Difference 1 (%) (95% CI) (CancerMath-Observed)	P value1	Difference 2 (%) (95% CI) (PREDICT-Observed)	P value2	Difference 3 (%) (95% CI) (CancerMath -PREDICT)	P value3
II	260	90.4 (0.018)	89.0	85.5	-1.4 (-2.2, -0.7)	<0.001	-4.9 (-6.2, -3.6)	<0.001	3.4 (2.6, 4.3)	<0.001
III	106	79.2 (0.039)	82.8	62.6	3.5 (1.9, 5.1)	<0.001	-16.7 (-21.6, -11.7)	<0.001	20.2 (16.4, 24.0)	<0.001
Adjuvant chemotherapy										
No	183	91.3 (0.021)	88.8	88.4	-2.5 (-3.8, -1.2)	<0.001	-2.9 (-4.9, -1.0)	0.004	0.4 (-0.7, 1.6)	0.476
1st generation	234	92.3 (0.017)	89.9	85.2	-2.4 (-3.2, -1.6)	<0.001	-7.1 (-8.8, -5.4)	<0.001	4.7 (3.7, 5.8)	<0.001
2nd generation	116	86.2 (0.032)	87.1	71.4	0.9 (-0.4, 2.1)	0.164	-14.9 (-19.2, -10.5)	<0.001	15.7 (12.3, 19.1)	<0.001
3rd generation	12	100	88.7	76.8	-11.3 (-14.0, -8.7)	<0.001	-23.2 (-35.7, -10.7)	0.002	11.8 (1.6, 22.1)	0.027
Adjuvant hormonal therapy										
No	178	84.3 (0.027)	85.1	70.2	0.8 (-0.4, 2.0)	0.181	-14.1 (-17.2, -11.1)	<0.001	14.9 (12.7, 17.1)	<0.001
Tamoxifen	165	92.7 (0.020)	92.2	90.3	-0.5 (-1.3, 0.4)	0.251	-2.4 (-4.2, -0.6)	0.009	1.9 (0.5, 3.3)	0.006
Containing AI (only AI, switching)	186	95.7 (0.015)	89.1	88.1	-6.6 (-7.6, -5.7)	<0.001	-7.6 (-9.2, -6.1)	<0.001	1.0 (-0.2, 2.2)	0.095
Ovarian ablation plus tamoxifen	16	87.5 (0.083)	95.8	96.2	8.3 (7.4, 9.1)	<0.001	8.7 (6.8, 10.6)	<0.001	-0.4 (-2.0, 1.1)	0.558



**Table 3** Observed and Model-Predicted 10-Year OS Stratified by Patients' Characteristics

	N (%)	Observed OS (%) (SE)	CancerMath OS (Mean) (%)	PREDICT OS (Mean) (%)	Difference 1 (%) (95% CI) (CancerMath-Observed)	P value1	Difference 2 (%) (95% CI) (PREDICT-Observed)	P value2	Difference 3 (%) (95% CI) (CancerMath -PREDICT)	P value3
All patients	397	82.6 (0.019)	78.3	72.0	-4.4 (-5.7, -3.0)	<0.001	-10.6 (-12.6, -8.6)	<0.001	6.3 (5.1, 7.4)	<0.001
Age at diagnosis (yr)										
≤60	331	86.4 (0.019)	81.6	74.7	-4.8 (-5.9, -3.7)	<0.001	-11.7 (-13.8, -9.6)	<0.001	6.8 (5.6, 8.1)	<0.001
>60	66	63.6 (0.059)	61.6	58.2	-2.1 (-6.0, 1.9)	0.299	-5.4 (-10.7, -0.2)	0.041	3.4 (0.9, 5.9)	0.009
Tumor size (mm)										
≤20	180	91.1 (0.021)	83.9	80.9	-7.2 (-8.7, -5.7)	<0.001	-10.2 (-12.3, -8.2)	<0.001	3.1 (2.1, 4.1)	<0.001
21–50	193	76.2 (0.031)	74.7	66.8	-1.5 (-3.5, 0.4)	0.129	-9.4 (-12.5, -6.4)	<0.001	7.9 (6.1, 9.7)	<0.001
>50	24	70.8 (0.093)	64.3	47.2	-6.5 (-12.4, -0.7)	0.030	-23.6 (-32.4, -14.9)	<0.001	17.1 (9.8, 24.5)	<0.001
Tumor grade										
I	40	92.5 (0.042)	88.4	89.2	-4.1 (-7.6, -0.6)	0.024	-3.3 (-6.3, -0.3)	0.032	-0.8 (-1.7, 0.1)	0.064
II	206	86.4 (0.024)	80.0	75.9	-6.4 (-8.1, -4.6)	<0.001	-10.5 (-12.9, -8.1)	<0.001	4.1 (2.9, 5.4)	<0.001
III	151	74.8 (0.035)	73.2	62.1	-1.7 (-3.8, 0.5)	0.123	-12.7 (-16.2, -9.2)	<0.001	11.1 (8.9, 13.2)	<0.001
Tumor histology										
Ductal	375	82.4 (0.020)	77.9	71.4	-4.6 (-5.9, -3.2)	<0.001	-11.1 (-13.2, -8.9)	<0.001	6.5 (5.3, 7.7)	<0.001
Lobular	2	100	91.5	92.0	-8.5 (-27.6, 10.6)	0.111	-8.0 (-33.4, 17.4)	0.156	-0.5 (-6.9, 5.0)	0.500
Others	20	85.0 (0.080)	84.4	81.9	-0.6 (-7.0, 5.8)	0.847	-3.2 (-9.4, 3.1)	0.301	2.6 (0.3, 4.8)	0.026
Number of positive nodes										
0	228	91.2 (0.019)	82.3	81.4	-8.9 (-10.4, -7.5)	<0.001	-9.8 (-11.2, -8.4)	<0.001	0.9 (0.3, 1.4)	0.001
1–3	98	74.5 (0.044)	76.7	69.1	2.2 (-0.5, 4.9)	0.107	-5.4 (-8.6, -2.1)	0.001	7.6 (6.0, 9.2)	<0.001
4–9	38	81.6 (0.063)	73.7	58.8	-7.9 (-11.3, -4.5)	<0.001	-22.8 (-29.7, -16.0)	<0.001	14.9 (10.3, 19.6)	<0.001
>10	33	48.5 (0.087)	60.3	30.6	11.8 (6.5, 17.1)	<0.001	-17.9 (-25.6, -10.2)	<0.001	29.7 (24.3, 35.1)	<0.001
Biological subtypes										
Luminal and HER2 -	190	89.5 (0.022)	82.9	79.4	-6.6 (-8.3, -5.0)	<0.001	-10.1 (-12.6, -7.6)	<0.001	3.5 (1.9, 5.0)	<0.001
Luminal and HER2 +	49	81.6 (0.055)	80.0	74.3	-1.6 (-4.2, 0.9)	0.202	-7.3 (-11.5, -3.1)	0.001	5.6 (2.9, 8.4)	<0.001
HER 2 overexpression	61	75.4 (0.055)	67.4	55.6	-8.0 (-11.6, -4.4)	<0.001	-19.8 (-25.6, -13.9)	<0.001	11.8 (8.0, 15.5)	<0.001
Triple negative	65	70.8 (0.056)	73.4	62.3	2.6 (-0.9, 6.0)	0.141	-8.5 (-13.7, -3.4)	0.002	11.1 (8.5, 13.6)	<0.001
Pathological stage										
I	129	96.1 (0.017)	86.1	85.1	-10.0 (-11.6, -8.5)	<0.001	-11.0 (-12.6, -9.5)	<0.001	1.0 (0.3, 1.7)	0.004

(Continued)

Table 3 (Continued).

	N (%)	Observed OS (%) (SE)	CancerMath OS (Mean) (%)	PREDICT OS (Mean) (%)	Difference 1 (%) (95% CI) (CancerMath-Observed)	P value1	Difference 2 (%) (95% CI) (PREDICT-Observed)	P value2	Difference 3 (%) (95% CI) (CancerMath -PREDICT)	P value3
II	188	80.9 (0.029)	77.9	74.2	-3.0 (-4.7, -1.3)	0.001	-6.8 (-8.6, -4.9)	<0.001	3.8 (2.8, 4.8)	<0.001
III	80	65.0 (0.053)	66.3	45.8	1.3 (-1.9, 4.6)	0.418	-19.2 (-24.7, -13.8)	<0.001	20.6 (17.0, 24.2)	<0.001
Adjuvant chemotherapy										
No	121	83.5 (0.034)	78.0	77.1	-5.5 (-8.5, -2.5)	<0.001	-6.4 (-9.9, -2.8)	0.001	0.9 (-0.4, 2.2)	0.180
1st generation	187	86.1 (0.025)	80.0	75.7	-6.1 (-7.9, -4.4)	<0.001	-10.4 (-12.6, -8.2)	<0.001	4.2 (3.3, 5.2)	<0.001
2nd generation	82	72.0 (0.050)	74.9	57.1	2.9 (0.5, 5.3)	0.019	-14.9 (-20.2, -9.5)	<0.001	17.8 (14.3, 21.2)	<0.001
3rd generation	7	100	75.6	56.9	-24.4 (-33.6, -15.3)	0.001	-43.1 (-65.3, -21.0)	0.003	18.7 (3.2, 34.3)	0.026
Adjuvant hormonal therapy										
No	138	74.6 (0.037)	71.0	60.5	-3.7 (-6.1, -1.3)	0.003	-14.1 (-17.8, -10.5)	<0.001	10.5 (8.4, 12.5)	<0.001
Tamoxifen	108	83.3 (0.036)	85.3	80.6	2.0 (0.1, 3.8)	0.037	-2.7 (-5.9, 0.5)	0.099	4.7 (2.7, 6.6)	<0.001
Containing AI (only AI, switching)	138	89.9 (0.026)	78.8	75.0	-11.1 (-13.1, -9.1)	<0.001	-15.0 (-17.8, -12.1)	<0.001	3.8 (2.0, 5.7)	<0.001
Ovarian ablation plus tamoxifen	13	84.6 (0.100)	91.8	91.0	7.2 (5.2, 9.2)	<0.001	6.4 (3.3, 9.5)	0.001	0.8 (-1.0, 2.6)	0.370



## Performance of CancerMath and PREDICT in Thai Breast Cancer Patients

ROC analysis illustrated that both of CancerMath and PREDICT models were moderate for discrimination performance. The AUC for 5-year OS in CancerMath and PREDICT were 0.74 (95% CI; 0.65–0.82) and 0.78 (95% CI; 0.71–0.85), respectively. The AUC for 10-year OS in CancerMath and PREDICT were 0.75 (95% CI; 0.68–0.82) and 0.78 (95% CI; 0.71–0.84), respectively (Figure 1).

## Discussion

Accurate prognostic tools are crucial for individualized treatment of breast cancer. This study validated two models (CancerMath and PREDICT) in Thai breast cancer patients and the results showed that both models underpredicted 5- and 10-year OS in the overall dataset. Between the two, CancerMath predicted outcomes more accurately than PREDICT in all subgroups. Both CancerMath and PREDICT performed fair discrimination between survivors and non-survivors at 5- and 10-years after diagnosis.

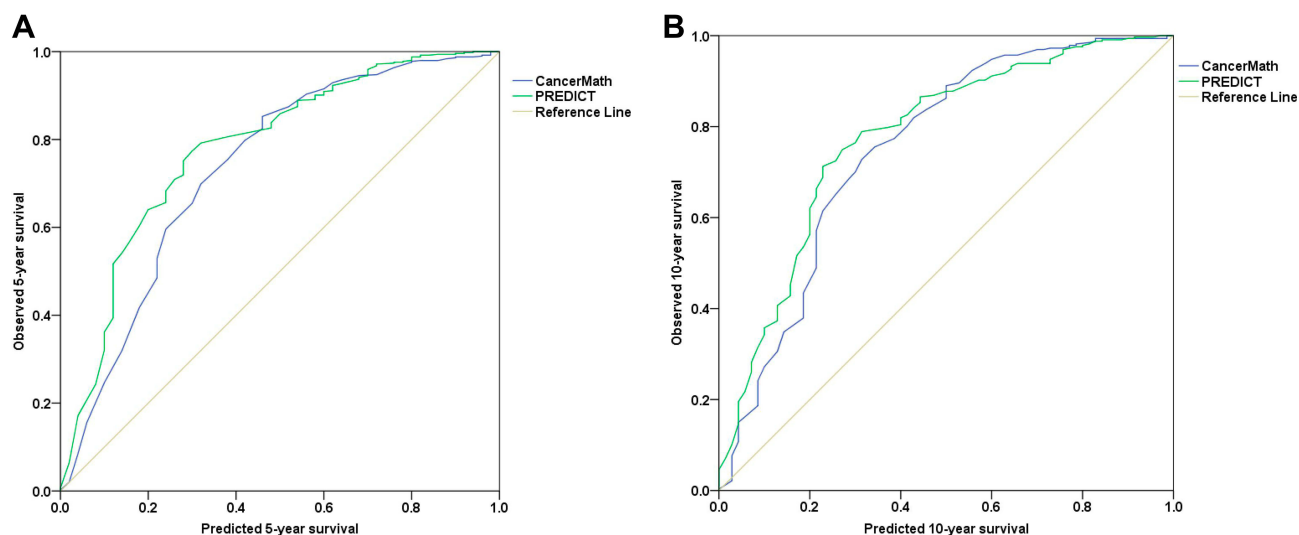
To our knowledge, this is the first study to validate the outcomes between CancerMath and PREDICT in Thai breast cancer patients. In Asian populations, a previous study by Wong et al demonstrated the validity of using PREDICT in most subgroups of patients recruited from University Malaya Medical Centre. The model-predicted 5- and 10-year OS of 86.3% and 77.5%, respectively, whereas the actual 5- and 10-year OS were 87.6% and 74.2%.<sup>12</sup> For the PREDICT model, our results and the previous study were discordant even

though the calculated OS was similar. The better observed OS in our study may be due to the inclusion of fewer patients with poor prognostic factors such as locally advanced stage and HER2 positive breast cancer.

There are a number of factors that may have resulted in the PREDICT model underestimating survival in this study. First, only the ER status was collected in PREDICT and therefore PREDICT could not account for patients with negative ER but positive PR ( $n=37$ , 6.0%). Second, PREDICT excluded first-generation chemotherapy which was used in 46 patients (7.5%), thus potentially resulted in an inaccurately calculated OS. Finally, 602 patients (97.9%) had no Ki-67 status which also contributed to inaccurate calculation of predicted survival.

The study by Miao et al that validated CancerMath in the Singapore Malaysia Hospital-Based Breast Cancer Registry revealed that the model slightly overestimated survival. The CancerMath predicted and observed OS probabilities were 87.3% and 83.4% at 5 years while they were 75.3% and 70.4% at 10 years after diagnosis. In addition, an overestimated OS in patients with N3 ( $\geq 10$  positive nodes) was also found which corroborates the results of the current study. In the study by Miao, CancerMath also showed fair discrimination with an AUC for 5-year and 10-year OS of 0.77 (95% CI; 0.75–0.79) and 0.74 (95% CI; 0.71–0.76) respectively.<sup>13</sup>

In this study, the greatest overpredicted OS of CancerMath was found in the subgroup of patients with N3. In this subgroup, 37.2% ( $n=19$ ) were HER2 positive breast cancer but only 3.9% ( $n=2$ ) were treated with trastuzumab as adjuvant treatment. Among 31.4% ( $n=16$ ) of



**Figure 1** ROC curves for 5- and 10-year overall breast cancer survival. (A) AUC for 5-year OS by CancerMath and PREDICT were 0.74 (95% CI 0.65–0.82) and 0.78 (95% CI 0.71–0.85), respectively. (B) AUC for 10-year OS by CancerMath and PREDICT were 0.75 (95% CI 0.68–0.82) and 0.78 (95% CI 0.71–0.84), respectively.

postmenopausal patients with positive ER or PR status, 7 patients (13.7%) received tamoxifen instead of AI. Furthermore, 84.3% (n=43) of this subgroup received radiation therapy. Owing to undertreatment, the actual survival of this subgroup was lower than those calculated by CancerMath. Additionally, CancerMath had only been validated among patients with a number of positive nodes of less than 10 while 8.3% (n=51) of the patients in our dataset had more than 10 positive nodes. Finally, many studies claimed that Asian breast cancer patients tend to manifest with characteristics consistent with poorer prognosis than their Western counterparts, such as more advanced stage, younger age, and more aggressive subtypes including HER2 overexpression and basal-like subtype;<sup>18,19</sup> thus, the predicted OS from models based on Western populations might overestimate OS in Asian patients.

Women with added ovarian ablation to tamoxifen was another group that had overestimated OS using CancerMath. This phenomenon may have been caused by two conditions. First, in this cohort, 151 premenopausal patients with hormonal receptor positive breast cancer who had a risk of recurrence were supposed to get tamoxifen plus ovarian ablation to permit adjuvant chemotherapy. However, none of these patients ended up receiving ovarian ablation. Second, there were a small cohort of patients in ovarian ablation plus tamoxifen subgroup (n=18). This implies that a greater emphasis on intensive treatment policies for locally advanced breast cancer and premenopausal women with positive ER or PR must be considered in Thailand.

The most underestimated OS using CancerMath occurred in patients who received third-generation chemotherapy. This may be explained by the small patient cohort (n=12) and the absence of any mortalities amongst this subgroup. CancerMath also underestimated OS in patients using AI-containing regimens, which happens to be the group of patients aged >60 years who are assumed to be the group to receive AI. The authors hypothesized that the high rate of discontinuation of AI in Western populations (32.4%-36.2%)<sup>20,21</sup> and the low rate of full adherence (49%) in patients may have contributed to this outcome.<sup>22</sup> A few studies based on Asian populations revealed that the rate of interruption and non-adherence to AI was 14.9% and 15.4%-22.7% in adjuvant hormonal therapy, respectively.<sup>23,24</sup>

Several limitations of this study should be considered. This study was a retrospective study and hence, there may be selection bias. This study was also conducted in a single center with a small number of patients; thus, a multicenter

study looking at using these models in Thai populations may address this limitation.

## Conclusion

Both CancerMath and PREDICT models underestimated OS in Thai breast cancer patients and CancerMath outperformed PREDICT in predictive performance in all subgroups for both 5- and 10-year OS. The clinical application of CancerMath should not be implemented to patients with N3 and aged over 60. Therefore, a novel prognostic model for Thai breast cancer patients is urgently required.

## Acknowledgments

The authors grateful to Mr. Suthipol Udornpuntharak (Division of clinical epidemiology, Department of Health Research and Development, Faculty of Medicine Siriraj Hospital) for statistical consultation; Miss Salida Ali (Department of Surgery, Faculty of Medicine, Siriraj Hospital) for registering the data to the online calculators; and Miss Surat Phumphuang (Department of Surgery, Faculty of Medicine, Siriraj Hospital) for Ethical submission processing.

## Disclosure

The authors report no conflicts of interest in this work.

## References

1. Sa-Nguanraksa D, O-Charoenrat E, Kulprom A, et al. Nomogram to predict non-sentinel lymph node status using total tumor load determined by one-step nucleic acid amplification: first report from Thailand. *Breast Cancer*. 2019;26(4):471-477. doi:10.1007/s12282-019-00945-8
2. Sa-Nguanraksa D, O-Charoenrat P. The role of vascular endothelial growth factor a polymorphisms in breast cancer. *Int J Mol Sci*. 2012;13(11):14845-14864. doi:10.3390/ijms131114845
3. Early Breast Cancer Trialists' Collaborative Group (EBCTCG). Effects of chemotherapy and hormonal therapy for early breast cancer on recurrence and 15-year survival: an overview of the randomised trials. *Lancet*. 2005;365(9472):1687-1717. doi:10.1016/S0140-6736(05)66544-0
4. Schmidt M, Victor A, Bratzel D, et al. Long-term outcome prediction by clinicopathological risk classification algorithms in node-negative breast cancer—comparison between Adjuvant!, St Gallen, and a novel risk algorithm used in the prospective randomized Node-Negative-Breast Cancer-3 (NNBC-3) trial. *Ann Oncol*. 2009;20(2):258-264. doi:10.1093/annonc/mdn590
5. Kim C, Paik S. Gene-expression-based prognostic assays for breast cancer. *Nat Rev Clin Oncol*. 2010;7(6):340-347. doi:10.1038/nrclinonc.2010.61
6. Ravdin PM, Siminoff LA, Davis GJ, et al. Computer program to assist in making decisions about adjuvant therapy for women with early breast cancer. *J Clin Oncol*. 2001;19(4):980-991. doi:10.1200/JCO.2001.19.4.980

7. Chen LL, Nolan ME, Silverstein MJ, et al. The impact of primary tumor size, lymph node status, and other prognostic factors on the risk of cancer death. *Cancer*. 2009;115(21):5071–5083. doi:10.1002/cncr.24565
8. Wishart GC, Azzato EM, Greenberg DC, et al. PREDICT: a new UK prognostic model that predicts survival following surgery for invasive breast cancer. *Breast Cancer Res*. 2010;12(1):R1. doi:10.1186/bcr2464
9. Mook S, Schmidt MK, Rutgers EJ, et al. Calibration and discriminatory accuracy of prognosis calculation for breast cancer with the online Adjuvant! Program: a hospital-based retrospective cohort study. *Lancet Oncol*. 2009;10(11):1070–1076. doi:10.1016/S1470-2045(09)70254-2
10. Michaelson JS, Chen LL, Bush D, Fong A, Smith B, Younger J. Improved web-based calculators for predicting breast carcinoma outcomes. *Breast Cancer Res Treat*. 2011;128(3):827–835. doi:10.1007/s10549-011-1366-9
11. Wishart GC, Bajdik CD, Dicks E, et al. PREDICT plus: development and validation of a prognostic model for early breast cancer that includes HER2. *Br J Cancer*. 2012;107(5):800–807. doi:10.1038/bjc.2012.338
12. Wong HS, Subramaniam S, Alias Z, et al. The predictive accuracy of PREDICT: a personalized decision-making tool for Southeast Asian women with breast cancer. *Medicine*. 2015;94(8):e593.
13. Miao H, Hartman M, Verkooijen HM, et al. Validation of the CancerMath prognostic tool for breast cancer in Southeast Asia. *BMC Cancer*. 2016;16(1):820. doi:10.1186/s12885-016-2841-9
14. Laas E, Mallon P, Delomenie M, et al. Are we able to predict survival in ER-positive HER2-negative breast cancer? A comparison of web-based models. *Br J Cancer*. 2015;112(5):912–917. doi:10.1038/bjc.2014.641
15. Karapanagiotis S, Pharoah PDP, Jackson CH, Newcombe PJ. Development and external validation of prediction models for 10-year survival of invasive breast cancer. Comparison with PREDICT and CancerMath. *Clin Cancer Res*. 2018;24(9):2110–2115. doi:10.1158/1078-0432.CCR-17-3542
16. Allison KH, Hammond MEH, Dowsett M, et al. Estrogen and progesterone receptor testing in breast cancer: ASCO/CAP guideline update. *J Clin Oncol*. 2020;38(12):1346–1366. doi:10.1200/JCO.19.02309
17. Wolff AC, Hammond MEH, Allison KH, et al. Human epidermal growth factor receptor 2 testing in breast cancer: American Society of Clinical Oncology/College of American Pathologists clinical practice guideline focused update. *J Clin Oncol*. 2018;36(20):2105–2122. doi:10.1200/JCO.2018.77.8738
18. Lim SE, Back M, Quek E, Iau P, Putti T, Wong JE. Clinical observations from a breast cancer registry in Asian women. *World J Surg*. 2007;31(7):1387–1392. doi:10.1007/s00268-007-9086-3
19. Sa-Nguanraksa D, Krisorakun T, Pongthong W, O-Charoenrat P. Survival outcome of combined GnRH agonist and tamoxifen is comparable to that of sequential adriamycin and cyclophosphamide chemotherapy plus tamoxifen in premenopausal patients with early breast cancer. *Mol Clin Oncol*. 2019;11(5):517–522. doi:10.3892/mco.2019.1913
20. Henry NL, Azzouz F, Desta Z, et al. Predictors of aromatase inhibitor discontinuation as a result of treatment-emergent symptoms in early-stage breast cancer. *J Clin Oncol*. 2012;30(9):936–942. doi:10.1200/JCO.2011.38.0261
21. Wagner LI, Zhao F, Goss PE, et al. Patient-reported predictors of early treatment discontinuation: treatment-related symptoms and health-related quality of life among postmenopausal women with primary breast cancer randomized to anastrozole or exemestane on NCIC Clinical Trials Group (CCTG) MA.27 (E1Z03). *Breast Cancer Res Treat*. 2018;169(3):537–548. doi:10.1007/s10549-018-4713-2
22. Hershman DL, Shao T, Kushi LH, et al. Early discontinuation and non-adherence to adjuvant hormonal therapy are associated with increased mortality in women with breast cancer. *Breast Cancer Res Treat*. 2011;126(2):529–537. doi:10.1007/s10549-010-1132-4
23. Hsieh KP, Chen LC, Cheung KL, Chang CS, Yang YH. Interruption and non-adherence to long-term adjuvant hormone therapy is associated with adverse survival outcome of breast cancer women—an Asian population-based study. *PLoS One*. 2014;9(2):e87027. doi:10.1371/journal.pone.0087027
24. Kuba S, Maeda S, Matsumoto M, et al. Adherence to adjuvant endocrine therapy in women with breast cancer: a prospective observational study in Japanese women. *Clin Breast Cancer*. 2018;18(2):150–156. doi:10.1016/j.clbc.2017.12.003

## Cancer Management and Research

### Publish your work in this journal

Cancer Management and Research is an international, peer-reviewed open access journal focusing on cancer research and the optimal use of preventative and integrated treatment interventions to achieve improved outcomes, enhanced survival and quality of life for the cancer patient.

Submit your manuscript here: <https://www.dovepress.com/cancer-management-and-research-journal>

The manuscript management system is completely online and includes a very quick and fair peer-review system, which is all easy to use. Visit <http://www.dovepress.com/testimonials.php> to read real quotes from published authors.