

# Impacts of a Nano-Laponite Ceramic on Surface Performance, Apatite Mineralization, Cell Response, and Osseointegration of a Polyimide-Based Biocomposite

This article was published in the following Dove Press journal:  
*International Journal of Nanomedicine*

Yiqun Zhang<sup>1,\*</sup>  
Weibo Jiang<sup>2,\*</sup>  
Sheng Yuan<sup>3</sup>  
Qinghui Zhao<sup>4</sup>  
Zhongling Liu<sup>5</sup>  
Wei Yu<sup>1</sup>

<sup>1</sup>Department of Hand Surgery, China-Japan Union Hospital of Jilin University, Changchun 130033, People's Republic of China; <sup>2</sup>Department of Orthopedics, Second Hospital of Jilin University, Changchun 130022, People's Republic of China; <sup>3</sup>Department of Orthopedics, Peoples' Hospital of Huoilinguo City, Tongliao 029200, People's Republic of China; <sup>4</sup>Translational Medical Center for Stem Cell Therapy and Institute for Regenerative Medicine, Shanghai East Hospital, Tongji University School of Medicine, Shanghai 200123, People's Republic of China; <sup>5</sup>Department of Hospital Infection Control, China-Japan Union Hospital of Jilin University, Changchun, 130033, People's Republic of China

\*These authors contributed equally to this work

**Introduction:** Polyimide (PI) exhibits good biocompatibility and high mechanical strength, but biological inertness that does not stimulate bone regeneration, while laponite possesses excellent bioactivity.

**Methods:** In this study, to improve the bioactivity of PI, nano-laponite ceramic (LC)-PI composites (LPCs) were fabricated by melt processing as implantable materials for bone repair.

**Results:** The compressive strength, hydrophilicity, and surface roughness of LPCs with 40 % LC content (LPC40s) were higher than LPC20s, and LPC20s higher than pure PI. In addition, no apatite mineralization occurred on PI, while apatite mineralized on LPCs in simulated body fluid. Compared with LPC20, more apatite deposited on LPC40, indicating good bioactivity. Moreover, the adhesion, proliferation, and alkaline phosphatase activity of rat bone mesenchymal stem cells on LPCs significantly increased with LC content increasing in vitro. Furthermore, the evaluations of animal experiments (micro-CT, histology, and pushout load) revealed that compared with LPC20 and PI, LPC40 significantly enhanced osteogenesis and osseointegration in vivo.

**Discussion:** Incorporation of LC into PI obviously improved not only surface physicochemical properties but also biological properties of LPCs. LPC40 with high LC content displayed good biocompatibility and bioactivity, which markedly promoted osteogenesis and osseointegration. Therefore, with its superior biocompatibility and bioactivity, LPC40 could be an alternative candidate as an implant for orthopedic applications.

**Keywords:** laponite, polyimide, cytocompatibility, bone repair

## Introduction

Over the past few decades, metallic materials (eg, stainless steel, titanium, and cobalt-chromium, as well as their alloys) have been used extensively as implants for load-bearing bone repair, due to their high mechanical strength and biocompatibility.<sup>1</sup> However, the elastic modulus of metallic materials is much higher than that of cortical bone in humans.<sup>1,2</sup> After implantation in vivo, metallic implants with high elastic moduli produce a stress-shielding effect that causes bone resorption and bone atrophy, thereby leading to loosening/failure of the implants.<sup>3</sup> In addition, corrosion of metals in a biological environment slowly releases corrosive products that might be toxic to the human body.<sup>4</sup> In the past few decades,

Correspondence: Wei Yu  
Email yuweiwei@jlu.edu.cn

nondegradable polymers (NDPs), such as polyetheretherketone (PEEK), polyethylene (PE), polyamide (PA), polytetrafluoroethylene, polypropylene, and polyurethane, have been also widely applied for soft/hard-tissues repair, due to their atoxicity and biosafety *in vivo*.<sup>5–7</sup> Moreover, NDPs have attracted much attention for load-bearing bone repair, because of superior biocompatibility and mechanical properties and easy processing, as well as corrosion resistance. Importantly, elastic moduli of NDPs are close to that of human cortical bone, which decreases the stress-shielding effect compared with metallic implants. Thereby, NDPs are considered preferred biomaterials to replace metallic materials for orthopedic applications.<sup>6,7</sup>

As an NDP, polyimide (PI) is a high-performance plastic with outstanding mechanical properties, chemical resistance, radiation resistance, and flexibility.<sup>7,8</sup> PI is applied extensively in various fields, including aerospace, automobile, microelectronics, and sensors, as well as membranes.<sup>7,8</sup> Nontoxic PI has also been proposed as a candidate for development of biomedical devices, such as nerve implants and energy-harvesting devices of microelectromechanical systems *in vivo*.<sup>9,10</sup> PI exhibits good biocompatibility and little hemolysis *in vitro* and *in vivo*.<sup>11</sup> Moreover, PI-carbon nanotube composites have improved performance over ultrahigh molecular-weight PE which might be a good candidate as cartilage materials to replace it.<sup>12</sup> Therefore, PI might be a promising biomedical material for load-bearing bone repair in orthopedic applications, due to its outstanding biocompatibility, mechanical properties, corrosion resistance, and elastic moduli, which are close to human cortical bone.<sup>9,10</sup> PI is a bioinert material that is indispensable in stimulating responses of osteoblasts and ultimately new bone (NB) regeneration.<sup>12</sup> Therefore, enhancing bioactivity and accelerating NB formation and integration with host bone are the challenges for PI application in orthopedics.

Generally, integration with host bone tissue (osseointegration) for nondegradable biomaterials is considered a criterion for successful bone repair.<sup>13</sup> After implantation *in vivo*, poor bioactivity of the biomaterial can cause inferior bone regeneration and osseointegration, which might reduce the initial fixation and long-term stability of the implant.<sup>14</sup> Bioactive materials (eg, bioactive bio-glass/ceramic) possess the ability to promote NB formation and osseointegration with host bone tissue.<sup>14,15</sup> However, these inorganic bioactive materials exhibit low toughness because of their brittleness, making it difficult

to repair load-bearing bone defects. Synthetic NDPs (eg, PA, PE, and PEEK) possess outstanding mechanical properties and machinability, as well as easy processing.<sup>5–7</sup> Therefore, in the past few decades, inorganic bioactive materials-NDP composites (eg, hydroxyapatite-PA, calcium silicate-PEEK, and bioglass-PE) have been investigated for their great potential for load-bearing bone repair.<sup>16</sup> Laponite (Lap), a synthetic layered silicate and bioactive material, has been developed as a new biomaterial for treatment of diseases and regenerative medicine, due to its biocompatibility.<sup>17,18</sup> Lap not only stimulates the proliferation of human mesenchymal stem cells but also improves osteogenic differentiation, bone-related matrix-protein deposition, and matrix mineralization of MC3T3-E1 cells.<sup>19,20</sup> Moreover, functionalized with lysine, arginine, and leucine, Lap improves the proliferation of human skin fibroblasts, indicating that it can be used as a wound dressing.<sup>21</sup> Furthermore, Lap stimulates growth of mesenchymal stem cells in rats and treats bone defects in mice.<sup>22</sup>

In this study, Lap ceramic (LC) was prepared and LC-PI composites (LPCs) fabricated by melt blending as implantable biomaterials. The purpose of this study was to develop nondegradable PI-based composites with bioactivity for bone repair. We assumed that incorporation of LC with PI would create new composites with better biological performance than PI alone. To confirm this hypothesis, surface properties (roughness and hydrophilicity) and *in vitro* bioactivity of LPCs (apatite mineralization in simulated body fluid [SBF]) were evaluated. Rat bone-marrow stromal cell (BMSC) responses to LPCs were investigated *in vitro*. Osteogenesis and osseointegration of LPCs were evaluated *in vivo* by animal experiments.

## Methods

### Preparation and Characterization of LC and LPCs

#### Nano-

LC was prepared by sintering Lap (Altana, Germany) powders at 800°C for 6 hours in a roasting furnace (P300, Nabertherm, Germany). After that, LC was ground into powder using a planetary ball mill (QM-3SP2, Nanjing Nanda, China). LPCs — 20 w% LC (LPC20; weight/weight) and LPC40 — were prepared by melt processing. PI (Junhua, China) powders were added to absolute ethyl alcohol and stirred for 1 hour, and then

LC powders were added into the PI dispersion and stirred continuously for 2 hours. The supernatant was decanted after the dispersion had stood for 4 hours and then dried in an oven (at 50°C) to obtain mixed powders. The mixtures were evenly mixed by the planetary ball mill to get the two kinds of powders (LPC20 and LPC40), which were compressed with a pressing machine (YP-40T, Jinfulun, China) into stainless-steel molds ( $\Phi 12 \times 10$  mm and  $\Phi 5 \times 5$  mm). The specimens obtained were sintered at 270°C for 4 hours to obtain LPC20 and LPC40. PI samples were also prepared by the same process as the controls.

Lap morphology was observed with transmission electron microscopy (JEM-2100F), and particle-size distribution of Lap and LC were measured by laser light-scattering spectrometry (CGS-5022F). LC morphology and composition were characterized using atomic force microscopy (DiMultiMode, Veeco, USA) and X-ray photoelectron spectroscopy (K-Alpha, Thermo Fisher Scientific, USA). Lap, LC, PI, LPC20, and LPC40 were characterized by X-ray diffraction (GeigerFlex, Rigaku, Japan) and Fourier-transform infrared spectroscopy (Magna-IR 550, Nicolet, USA), and LC, PI, LPC20, and LPC40 were analyzed by scanning electron microscopy (SEM; S-3400N, Hitachi, Japan) and energy-dispersive spectroscopy (EDS; S-4800, Hitachi).

## Compressive Strength, Surface Roughness, and Hydrophilicity

Compressive strength and compressive moduli of ( $\Phi 12 \times 10$  mm) of PI, LPC20, and LPC40 were tested at 2 mm/min using a mechanical testing machine (CMT4000, MTS, China) with a 9 N load cell at room temperature, which was stopped when the compression ratio had reached 50% or chipping. Surface morphology and roughness of the samples ( $\Phi 12 \times 2$  mm) was determined using laser confocal microscopy 3-D microscopy (VK-X110, Keyence, Japan). Hydrophilicity of the specimens ( $\Phi 12 \times 2$  mm) were determined by water-contact angles (XG-CAMB3, Xuanyichuangxi Industrial Equipment, China).

## Apatite Mineralization in SBF

Apatite mineralization of specimens ( $\Phi 12 \times 2$  mm) of PI, LPC20, and LPC40 was carried out in SBF (pH 7.4) at 37°C.<sup>15</sup> Specimens were immersed in SBF (solid:liquid ratio 1 cm<sup>2</sup>:20 mL). After 7 days' soaking, specimens were taken out, rinsed with deionized water, and dried for

24 hours at 60°C. Composition and surface morphology were determined by SEM and EDS. Concentrations of Li, Mg, Si, Ca, and P ions in SBF were detected with inductively coupled plasma atomic emission spectroscopy (IRIS 1000, Thermo Elemental, USA) after specimen soaking for different periods. pH values were measured after soaking.

## Cell Experiments

Rat BMSCs were extracted from 4-week-old male Sprague Dawley rat limbs (Jiesijie, China). Isolation methods were based on previous research.<sup>23</sup> Briefly, bilateral femora and tibiae of the rats were harvested and ravaged with  $\alpha$ MEM supplemented with 10% FBS, HyClone, 100 U/mL penicillin, and 100 mg/L streptomycin (HyClone) under sterile conditions. After 3 days of culture, nonadherent cells were washed away with PBS, and the remaining adherent cells mostly comprised primary BMSCs (P<sub>0</sub>). The medium was refreshed every 3 days, and BMSCs were passaged when 80%–90% confluence had been reached. The third passages were used for the following cell experiments.

BMSCs were cultured in  $\alpha$ MEM supplemented with FBS (10%) containing 1% penicillin (100 U/mL) and streptomycin sulfate (100  $\mu$ g/mL), and cell culture was carried out in an atmosphere of 5% CO<sub>2</sub> at 37°C. The culture medium (Sigma-Aldrich) was exchanged every 3 days and normal passages performed, and third-generation rat BMSCs were used for cell experiments. Cells were detached to form a cell suspension using 0.25% trypsin and cell suspensions counted before being cocultured with samples, with cell density  $2 \times 10^4$  cells per well. Specimens of PI, LPC20, and LPC40 ( $\Phi 12 \times 2$  mm) were sterilized at 50°C for 4 hours with ethylene oxide in a sterilizer (SQ-H120, Sanqiang Medical, China).

## Cell Morphology

BMSCs were inoculated on the samples (PI, LPC20, and LPC40) in a 24-well plate and specimens taken out and treated with PBS to remove unattached cells at 1, 3 and 7 days after culturing. Cells adhering to sample surfaces were fixed using 2.5% glutaraldehyde for 40 minutes. Then, the glutaraldehyde solution was removed and specimens rinsed thrice with PBS, followed by sequential dehydration in graded ethanol (10%, 30%, 50%, 70%, 85%, 90%, and 100%) for 10 minutes. Specimens were placed in the air and dried for 24 hours, and BMSCs on the samples were observed with SEM. Samples were taken out and treated with PBS after culturing for 7 days. Cells adhering to sample surfaces were

fixed in 2.5% glutaraldehyde for 40 minutes. Then, cell-seeded specimens were stained with 4',6-diamidino-2-phenylindole (Sigma-Aldrich) for 40 minutes. After being rinsed twice with PBS, cell-seeded specimens were stained with fluorescein isothiocyanate (Sigma-Aldrich) for 8 minutes. Cell morphology was observed utilizing confocal laser scanning microscopy (Hitachi).

### Cell Proliferation

For cell-proliferation assays, BMSC cultured on PI, LPC20, and LPC40 were tested with CCK8). At 1, 3, and 7 days after culturing, specimens were gently rinsed thrice with PBS to remove unattached cells. Then, cells on the specimens of each well were incubated with cell medium (400  $\mu$ L) containing CCK8 (40  $\mu$ L) for 6 hours. Optical density (OD) values of solution were tested at 405 nm utilizing a microplate reader (SpectraMax 384, Molecular Devices, USA)

### Alkaline Phosphatase Activity

PI, LPC20, and LPC40 were placed in a 24-well cell-culture plate. BMSCs were seeded on sample surfaces. Cell-culture medium was replaced once a day. At 7, 10, and 14 days after culturing, the culture fluid was taken out, the specimens washed with PBS, and 500  $\mu$ L of a 1% concentration of ethyl phenyl PE glycol solution (NP40) added. Then, 50  $\mu$ L *p*-nitrophenyl phosphate solution (1 mg/mL) was added to each well for 16 minutes at 37°C. After that, 100  $\mu$ L 0.1 M sodium hydroxide was added to terminate the color reaction. OD values were tested using the SpectraMax at 405 nm. BSA was applied as the standard protein. Total protein content in the lysate was determined using the BCA kit. ALP activity was expressed as OD per total protein content.

## Osteogenesis and Osseointegration In Vivo

### Surgery

In vivo implantation was performed on eight male beagle dogs (weight 11–14 kg, age 18 months), which was approved by the institutional animal care and use committee of National Tissue Engineering Research Center (Shanghai, China) according to National Institutes of Health guidelines (publication 85–23 revised 1985) for the care and use of laboratory animals. The dogs were anesthetized by applying an intravenous injection of pentobarbital (1%, 80 mg/kg). Then midshafts of right femora were exposed by skin incisions (6 cm in length). Bone holes ( $\Phi 5 \times 5$  mm) spaced about 10 mm apart in each femur were made with a medical drill.

Then, sterilized implants of PI, LPC20, and LPC40 ( $\Phi 5 \times 5$  mm) were implanted into the holes, and the overlying soft tissue and skin was closed. At 4 and 12 weeks after implantation, the dogs were euthanized and right femora obtained and fixed using glutaraldehyde solution (2.5%).

### Micro-CT Evaluation

Micro-CT scanning (SkyScan 1076) was conducted to determine NB tissue surrounding the implants (40 kV voltage, 250  $\mu$ A current, and 35 mm resolution). The scanning area ( $\Phi 5 \times 5$  mm) containing the implants was selected as the region of interest for micro-CT evaluation. NRecon and CTVol (Skyscan Company, Belgium) were utilized to construct 3-D images of the samples, and the threshold was optimized to isolate bone tissue and implants. Bone-mineral density, bone volume/total volume, trabecular number, and trabecular thickness were determined using CTAn (Skyscan).

### Evaluation of Histology and Pushout Loads

Samples containing bone tissue and implants were dehydrated using ethanol (from 75% to 100%) and fixed using PMMA. They were embedded and cut into sections (150  $\mu$ m) using a Leica SP1600 saw microtome and ground to thinner sections (50  $\mu$ m), which were then stained by Van Gieson's picrofuchsin. Inverted microscopy was used to observe these stained sections, and ImagePro Plus 6.0 (Media Cybernetics, Silver Spring, USA) was utilized to determine the percentage of bone-implant contact (BIC). A universal material-testing system (Instron) from High Wycombe (UK) was used to test the pushout loads of implants with bone tissue at a load rate of 5 mm/min. A load-displacement curve was recorded during pushing, and peak of the curve defined as failure load.

## Statistical Analysis

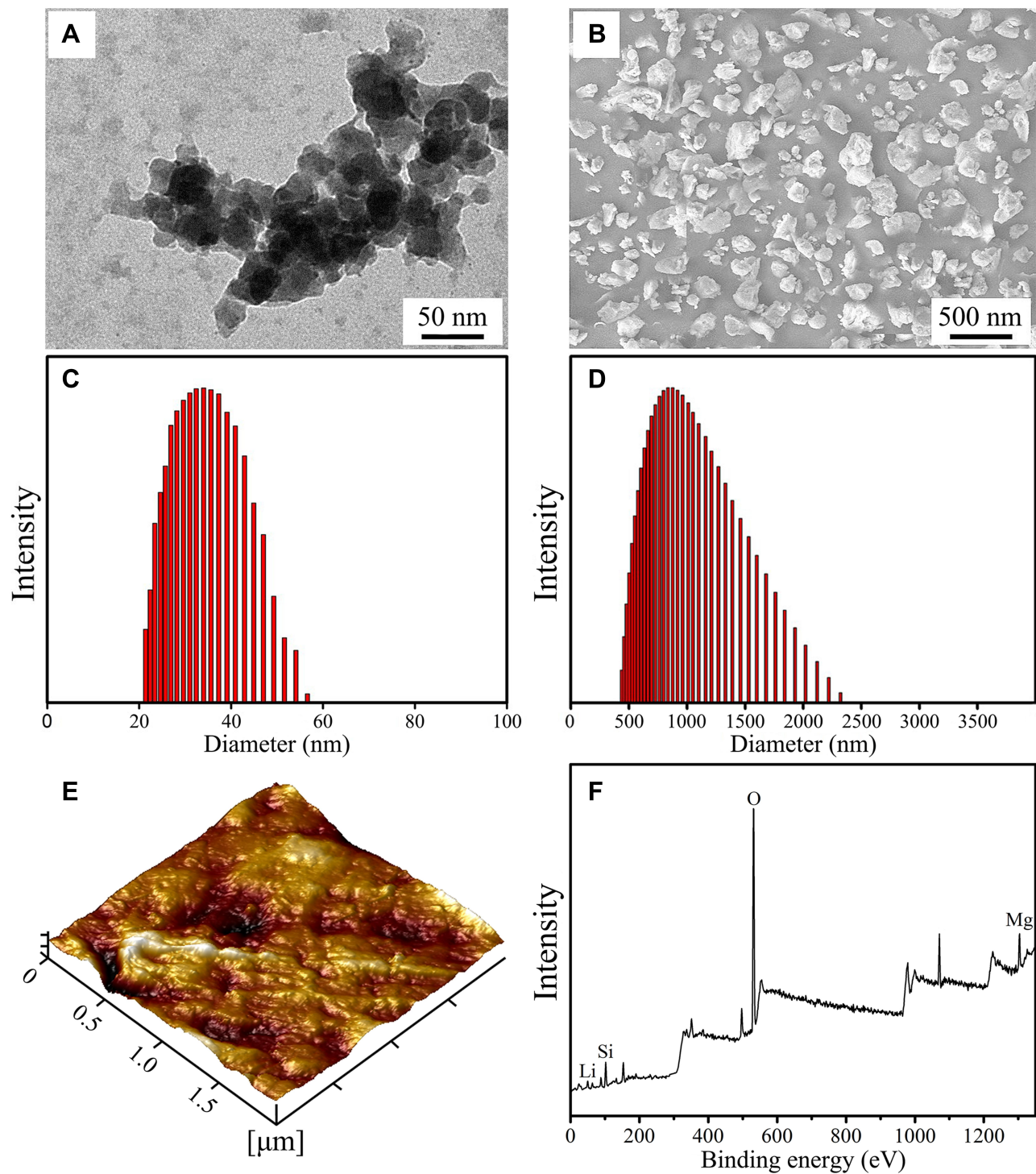
Quantitative data obtained from the experiments performed in triplicate are expressed as means  $\pm$  SD. Data were analyzed with Origin 9.0. ANOVA was used to detect statistical differences, and  $p < 0.05$  was regarded as significant.

## Results

### Characterization of Lap and LC

Transmission electron microscopy of Lap is shown in Figure 1A. Lap particles sized around 30 nm exhibited spherical morphology. SEM of LC is shown in Figure 1B. The LC particles sized around 300 nm revealed irregular morphology. Particle-size distribution of Lap and LC is





**Figure 1** TEM (A) of Lap, SEM (B) of LC, particle-size distribution of Lap (C) and LC (D), and 3-D AFM (E) and XPS spectra (F) of LC.

**Abbreviations:** TEM, transmission electron microscopy; SEM, scanning electron microscopy; AFM, atomic force microscopy; XPS, X-ray photoelectron spectroscopy; Lap, laponite; LC, Lap ceramic; PI, polyimide; LPC20, 20 w% LC-PI composite.

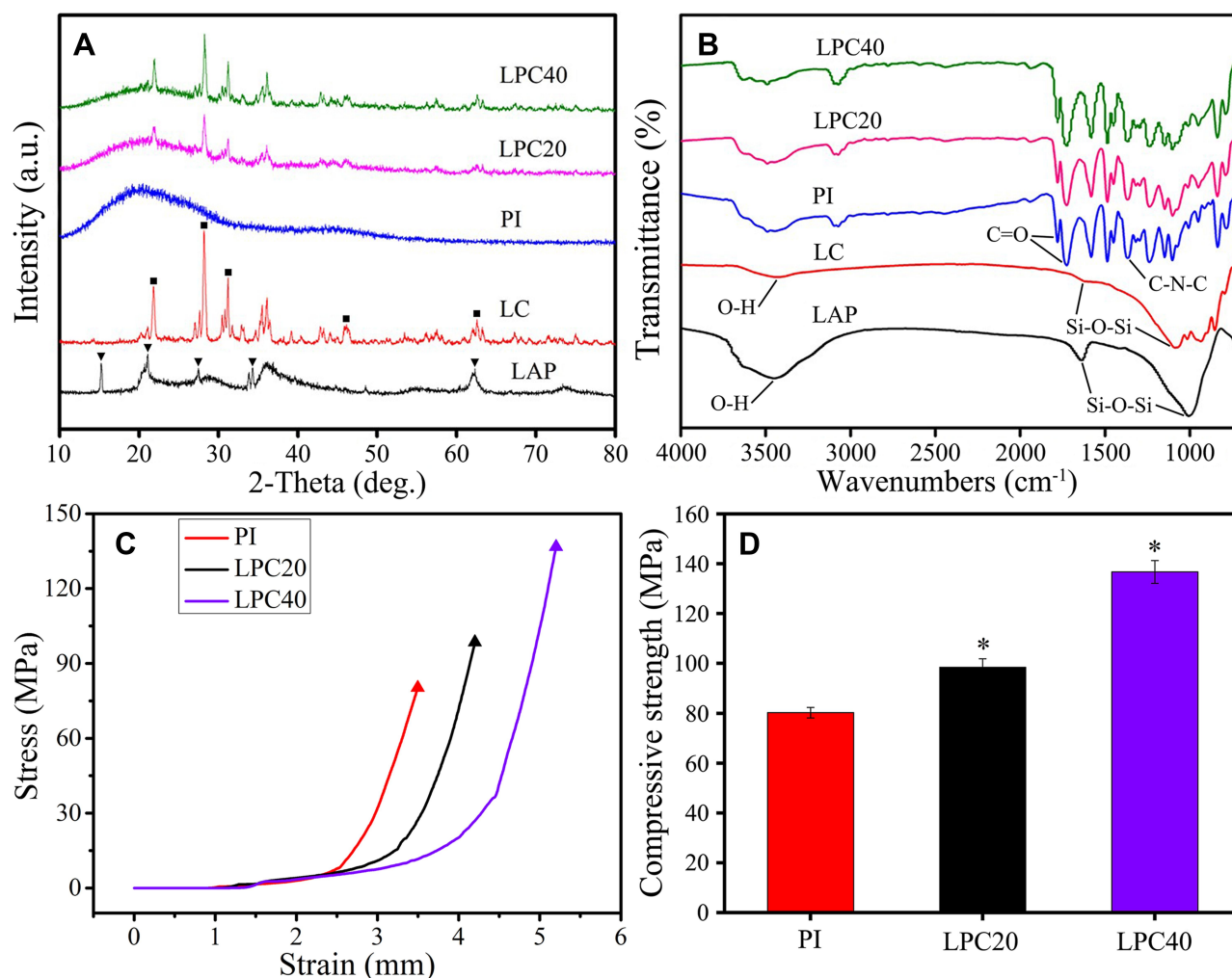
shown in Figure 1C and D, respectively. Particle-size distribution of Lap was 20–40 nm, while LC was 200–500 nm. Atomic force microscopy of LC is shown in Figure

1E. LC-particle size was 500–1,000 nm. X-ray photoelectron spectra of LC are shown in Figure 1F. LC contained Li, Si, and Mg elements.

## Characterization of LPC

X-ray diffraction patterns of Lap, LC, PI, LPC20, and LPC40 are shown in Figure 2A. Lap peaks appeared at  $2\theta = 20.0^\circ$ ,  $28.0^\circ$ ,  $35.0^\circ$ , and  $60.6^\circ$  while LC peaks were found at  $2\theta = 20.0^\circ$ ,  $22.0^\circ$ ,  $28.0^\circ$ ,  $35.0^\circ$ ,  $47.0^\circ$ , and  $62.0^\circ$ .<sup>20</sup> The standard powder-diffractioncard number of Lap was 25–1385. A broad peak at around  $21.3^\circ$  was attributed to PI, exhibiting the amorphous phase. X-ray diffraction patterns of LC were found in both LPC20 and LPC40. Fourier-transform infrared spectra of Lap, LC, PI, LPC20, and LPC40 are shown in Figure 2B. For Lap, the peak at  $3,415\text{ cm}^{-1}$  represented hydroxyl (O–H) stretching vibration, and those at  $1,629\text{ cm}^{-1}$  and  $1,010\text{ cm}^{-1}$  represented silicon–oxygen bonds (Si–O–Si) and asymmetric stretching of the silicate layer. Compared to Lap, hydroxyl peaks in LC decreased after sintering at high temperature.

For PI, the peak at  $1,775\text{ cm}^{-1}$  was an asymmetrical vibration of C=O,  $1,720\text{ cm}^{-1}$  was ascribed to C=O symmetrical stretching vibration, and  $1,373\text{ cm}^{-1}$  was assigned to C–N–C stretching vibration in the imide bond. In addition, peaks at  $1,610\text{ cm}^{-1}$  and  $1,508\text{ cm}^{-1}$  represented absorption peaks of a benzene ring. Characteristic peaks of both LC and PI were detected in both LPC20 and LPC40, while no new peak was observed. Stress–strain curves of PI, LPC20, and LPC40 are shown in Figure 2C. Stress of the samples increased with increased strain for PI, LPC20, and LPC40. Compressive strengths of PI, LPC20, and LPC40 are shown in Figure 2D, and were  $80.28 \pm 2.1\text{ MPa}$ ,  $98.48 \pm 3.4\text{ MPa}$ , and  $136.76 \pm 4.6\text{ MPa}$ , respectively. Compressive moduli of PI, LPC20 and LPC40 were  $2.9 \pm 0.2\text{ GPa}$ ,  $3.7 \pm 0.1\text{ GPa}$ , and  $5.6 \pm 0.3\text{ GPa}$ , respectively.



**Figure 2** XRD patterns (A) and FTIR spectra (B) of Lap, LC, PI, LPC20, and LPC40, stress–strain curve (C), and compressive strength (D) of PI, LPC20, and LPC40. ▼XRD peaks of Lap; ■XRD peaks of LC; ▲compressive strength of PI, LPC20, and LPC40. \* $p < 0.05$  for LPC40 and LPC20 vs PI.

**Abbreviations:** XRD, X-ray diffraction; FTIR, Fourier-transform infrared spectrometry; Lap, laponite; LC, Lap ceramic; PI, polyimide; LPC20, 20 w% LC–PI composite.



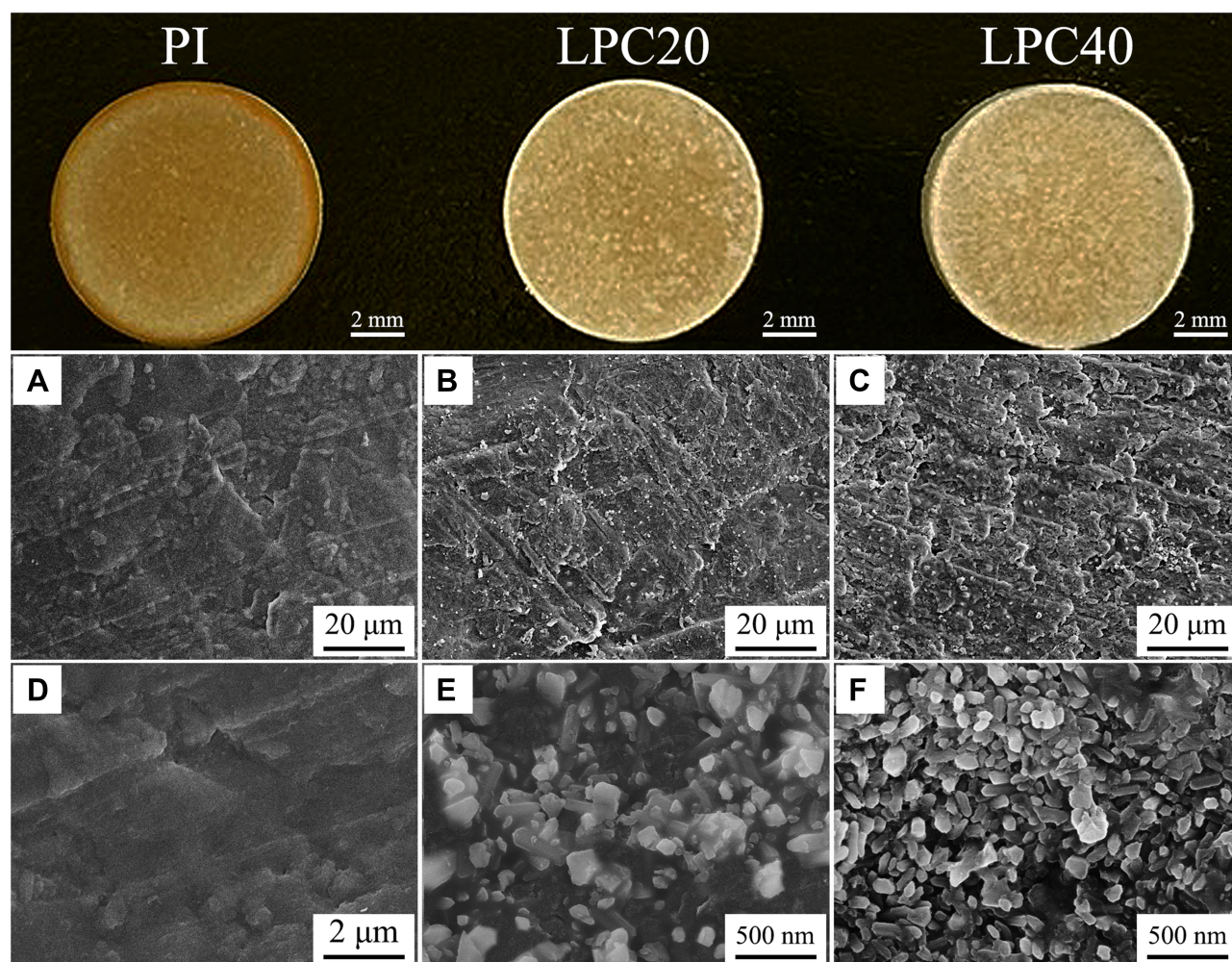
## Surface Morphology, Composition, and Hydrophilicity

Photos and SEM images of surface morphology of PI, LPC20, and LPC40 are shown in Figure 3. Compared to PI (Figure 3A and D), with its smooth surface, both LPC20 and LPC40 exhibited rough surfaces (Figure 3B and C). At higher magnification, (Figure 3E and F), many LC particles were found on the surfaces of LPC20 and LPC40. EDS spectra of PI, LPC20, and LPC40 are shown in Figure 4A–C. LPCs showed peaks for Na, Mg, and Si, which increased with increased LC content. EDS mapping is shown in Figure 4D–I. C, Mg, and Si were detected in both LPC20 (Figure 4D–F) and LPC40 (Figure 3G–I), confirming that LC particles were dispersed in the PI matrix. Laser confocal microscopy 3-D images of PI, LPC20, and LPC40 are shown in Figure 5. PI (Figure 5A) showed a smooth surface, while both LPC20 (Figure 5B) and LPC40 (Figure 5C)

displayed rough surfaces. Surface roughness (Figure 5D) of PI was  $1.05 \pm 0.03 \mu\text{m}$ , while LPC20 and LPC40 were  $1.21 \pm 0.12 \mu\text{m}$  and  $1.55 \pm 0.27 \mu\text{m}$ , respectively. Hydrophilicity of PI, LPC20, and LPC40 was determined by testing water-contact angles shown in Figure 5E, which were  $78.0^\circ$ ,  $65.5^\circ$ , and  $50.5^\circ$ , respectively.

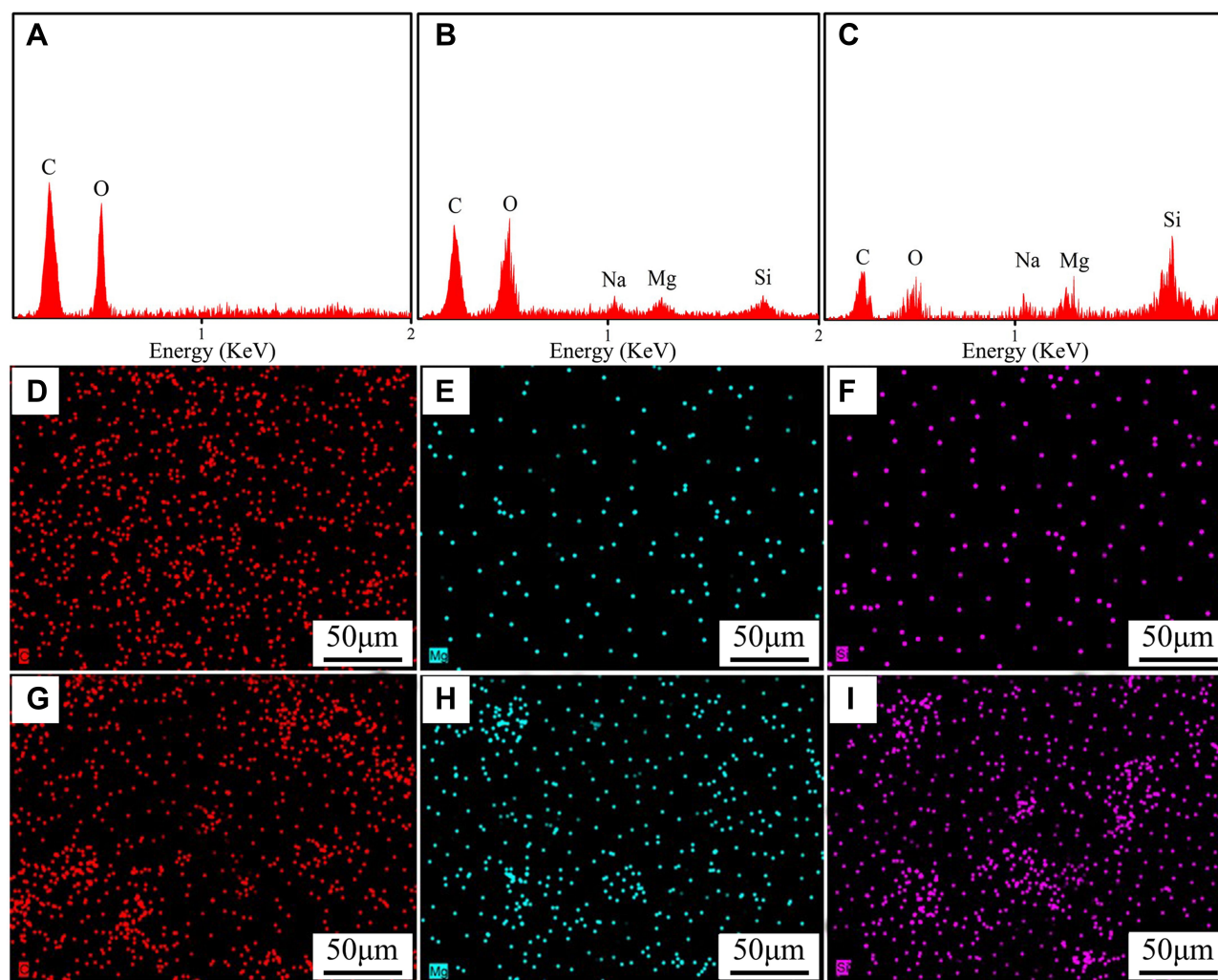
## Apatite Mineralization in SBF

Figure 6A–C shows SEM of surface morphology of PI, LPC20, and LPC40 after immersion in SBF for 7 days. PI exhibited a smooth surface without precipitates, while a large number of microsphere precipitates sized about  $2 \mu\text{m}$  were found on both LPC20 and LPC40 surfaces. Microsphere precipitates on LPC40 surface were greater in number than LPC20. Figure 6D–F shows the EDS of PI, LPC20, and LPC40 after soaking in SBF for 7 days. Peaks of Ca and P were detected. Ca:P ratios for LPC20 and



**Figure 3** Photos (top) and SEM of PI (A and D), LPC20 (B and E), and LPC40 (C and F).

**Abbreviations:** SEM, scanning electron microscopy; PI, polyimide; LPC20, 20 w% laponite ceramic-PI composite.



**Figure 4** EDS spectra of PI (A), LPC20 (B), and LPC40 (C), EDS mapping of LPC20 (D–, E Mg, F Si) and LPC40 (C, G, H Mg, I Si).  
**Abbreviations:** EDS, energy-dispersive spectroscopy; PI, polyimide; LPC20, 20 w% laponite ceramic–PI composite.

LPC40 were 1.55 and 1.60, respectively (approach to Ca: P ratio of hydroxyapatite of 1.67), revealing the formation of apatite on both LPC20 and LPC40.

Figure 6G and H shows changes in Ca, Mg, P, Li and Si ion concentrations with time after LPC20 and LPC40 soaking in SBF for different periods. Concentrations of Mg, Si, and Li ions kept increasing, while Ca and P ions decreased during the mineralization process. Figure 6I shows changes in pH values with time after PI, LPC20, and LPC40 soaking for different periods. During immersion, pH values for PI showed no change, while those for LPC20 (7.79–7.89) and LPC40 (7.88–8.02) increased gradually with time (1–7 days).

## Cell Morphology

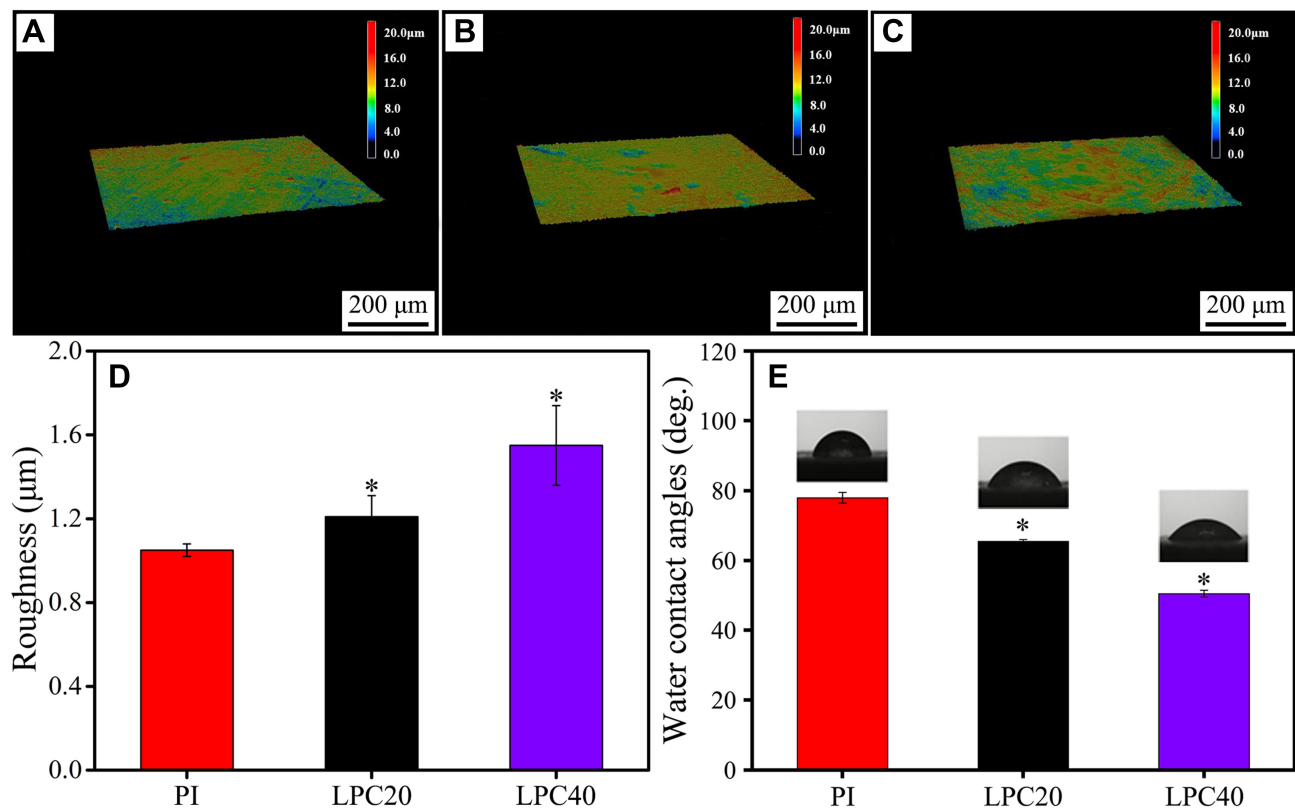
Figure 7 shows SEM of morphology of BMSCs cultured on PI, LPC20, and LPC40 for different periods. Cells on

LPC20 and LPC40 surfaces had adhered better than PI at 1, 3, and 7 days. More cells were found to adhere and spread better on LPC40 than LPC20 and LPC20 than PI at 3 and 7 days. Confocal laser-scanning microscopy images of cytoskeleton (BMSCs) on samples stained with FITC and DAPI are shown in Figure 8. Cytoplasm of the cells was stained green by FITC, while cell nuclei were labeled blue by DAPI. Adhesion and spread of the cells on LPC40 were more than LPC20, and LPC20 more than PI.

## Cell Proliferation and ALP Activity

OD values (revealing cell proliferation) of BMSCs on PI, LPC20, and LPC40 at 1, 3, and 7 days after culturing are shown in Figure 9A. Values of cells on samples increased with time. In addition, OD values of cells on LPC40 were the highest while values for PI lowest. ALP activity





**Figure 5** Laser confocal microscopy 3-D images of PI (A), LPC20 (B), and LPC40 (C) and surface roughness (D) and water-contact angles (E) of samples. \* $p < 0.05$  for LPC40 and LPC20 vs PI.

**Abbreviations:** PI, polyimide; LPC20, 20 w% laponite ceramic-PI composite.

(indicating cell osteogenic differentiation) of cells on PI, LPC20, and LPC40 at 7, 10, and 14 days after culturing is shown in Figure 9B. ALP activity of cells on samples increased with time. ALP activity of cells on LPC40 was highest and PI lowest.

## Osteogenesis and Osseointegration in vivo

### Micro-CT Evaluation

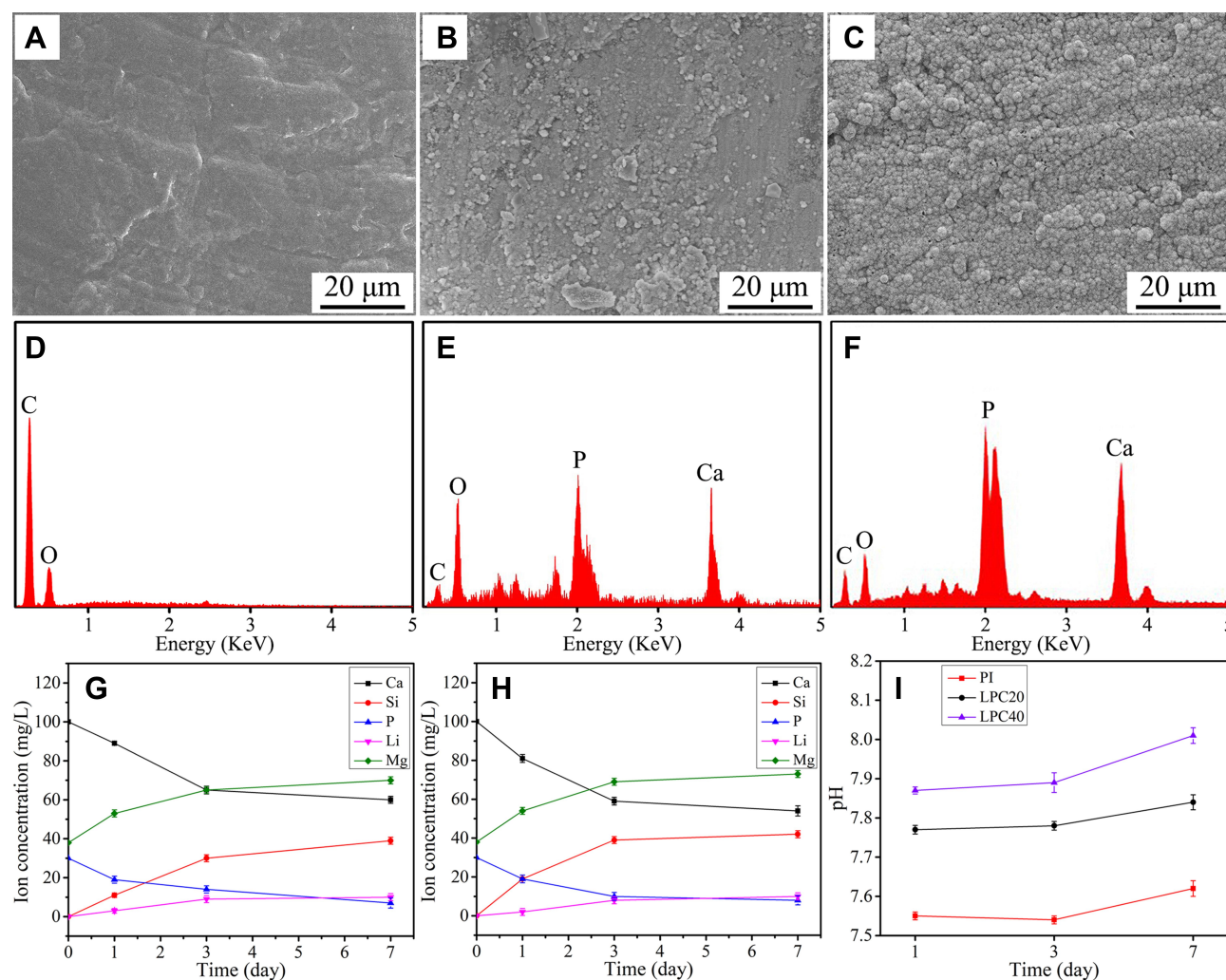
Figure 10A shows reconstructed 3-D images of NB tissue around the samples (PI, LPC20, and LPC40) at different time points after implantation. At 4 and 12 weeks, NB for LPC40 was highest and NB for PI. In addition, NB around LPC40 and LPC20 increased with implanted time, while no significant change was detected for PI during the entire implantation period.

Figure 10BE shows quantitative analysis of bone-mineral density (BMD), bone volume/total volume (BV/TV), trabecular number (Tb.N), and trabecular thickness (Tb.Th) of the implanted samples. BMD, BV/TV, Tb.N and Tb.Th for LPC40 were highest, while PI exhibited the

lowest at 4 and 12 weeks. BMD, BV/TV, Tb.N and Tb.Th for LPC40 and LPC20 increased with time, while there was no significant change for PI during the entire implantation period.

### Histological and Pushout-Load Evaluation

Figure 11A shows images of histological sections. At interfaces between NB and implants, NB on the surface of both LPC40 and LPC20 were more than PI at 4 and 12 weeks. Compared with LPC20 and PI, LPC40 obtained the best contact with NB. Almost no gaps between NB and implants were found for LPC40, while obvious gaps had appeared for PI at 12 weeks. Figure 11B shows the percentage of BIC. BIC for LPC40 and LPC20 increased with time, with no obvious change for PI during the entire implantation period. At 12 weeks, BIC for LPC40 (88.6%) was highest compared with LPC20 (53.2%) and PI (12.7%). Figure 11C shows the pushout loads of the implants. Loads for LPC40 (4W 286.3 N and 12W 427.6 N) were obviously higher than LPC20 (4W 193.4 N and 12W 301.5 N) and PI (4W 69.2 N and 12W 87.1 N) at 4 and 12 weeks.



**Figure 6** SEM of surface morphology of PI (A), LPC20 (B), and LPC40 (C) EDS of PI (D), LPC20 (E), and LPC40 (F) after soaking in SBF for 7 days, changes in ion concentration in SBF for LPC20 (G) and LPC40 (H) after soaking for different periods, and changes in pH (I) in SBF for PI, LPC20, and LPC40 after soaking for different periods.

**Abbreviations:** SEM, scanning electron microscopy; EDS, energy-dispersive spectroscopy; SBF, simulated body fluid; PI, polyimide; LPC20, 20 w% laponite ceramic-PI composite.

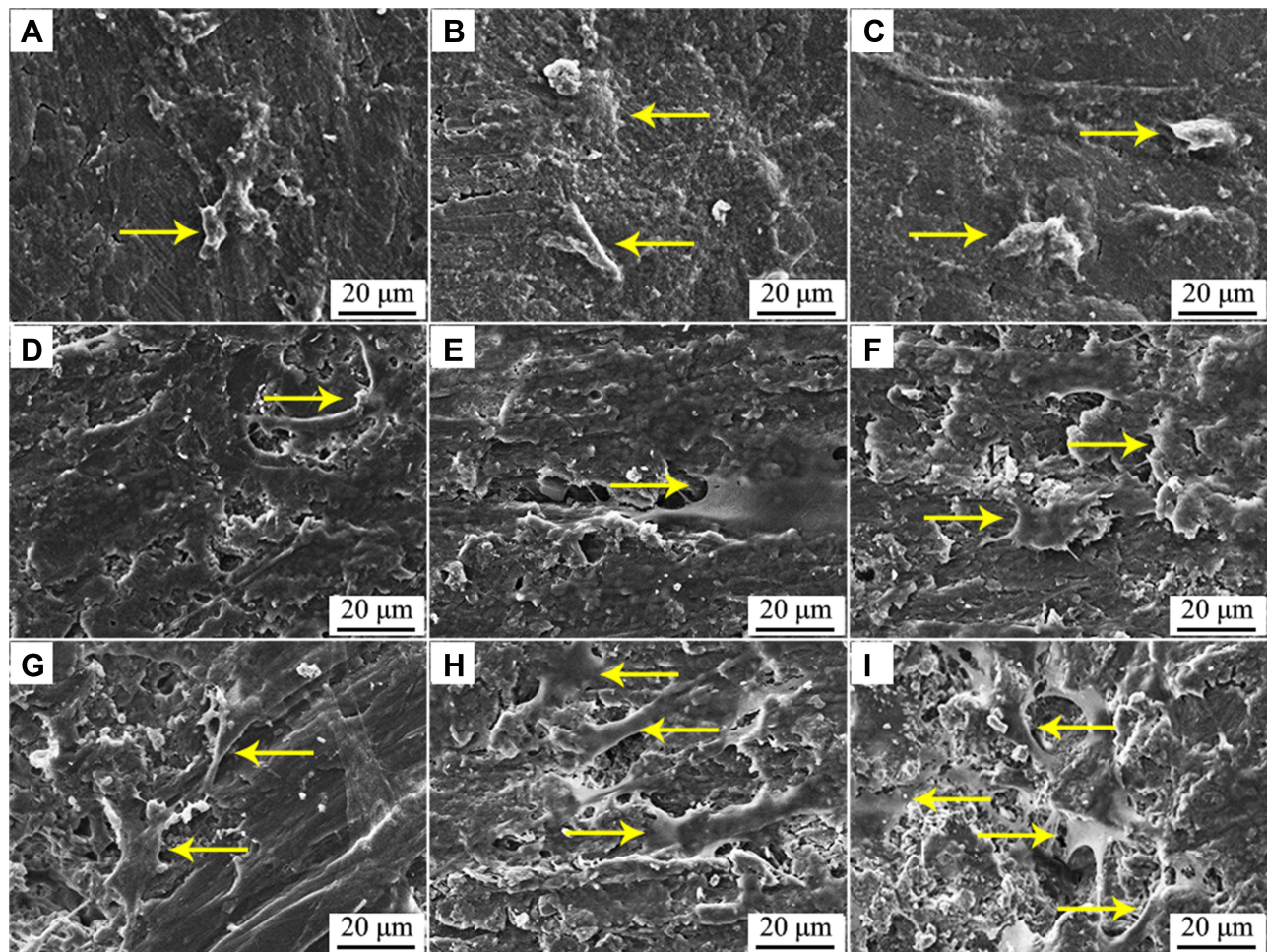
## Discussion

Generally, implantable materials with biocompatibility and osteogenic activity can promote bone regeneration and be integrated with host bone (osseointegration) that obtains initial fixation and long-term stability, confirming successful bone repair.<sup>24</sup> In this study, nano-LC was prepared and incorporated into PI to obtain bioactive LPCs. The results showed that LC particles were distributed in the PI matrix for both LPC20 and LPC40, which exhibited rough surfaces compared to PI, which was smooth. Surface roughness of the biomaterial not only influences cell behavior and function (eg, attachment, proliferation, and osteogenic differentiation) but also increases bone-tissue anchorage and growth, and thus enhances osseointegration

of the implant.<sup>25</sup> In this study, the surface roughness of LPC40 (1.55 μm) was higher than LPC20 (1.21 μm) and PI (1.05 μm). Therefore, improvements of surface roughness of the composites were attributed to the increase in LC content.

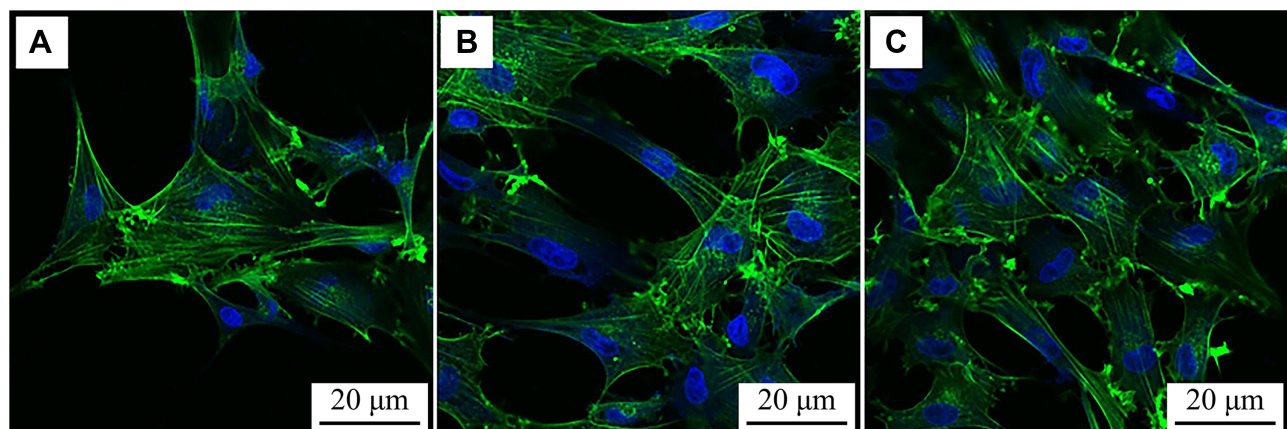
Decreased water-contact angles of the biomaterial surface are an indicator of improvement in hydrophilicity.<sup>26</sup> In this study, water-contact angles of the composites gradually decreased with increased LC content, indicating improvement in hydrophilicity. The hydrophilicity of LPC40 was highest, while PI was lowest. Clearly, the increased hydrophilicity of LPC40 was due to increased content of hydrophilic LC. In the design of bone implants for maxillofacial and cranial reconstruction,





**Figure 7** SEM of BMSC morphology with PI (A–C), LPC20 (D–F), and LPC40 (G–I) at 1 (A, D, G), 3 (B, E, H), and 7 days (C, F, I) after culturing (yellow arrows represent the cells).

**Abbreviations:** SEM, scanning electron microscopy; BMSC, bone-marrow stromal cell; PI, polyimide; LPC20, 20 w% laponite ceramic–PI composite.

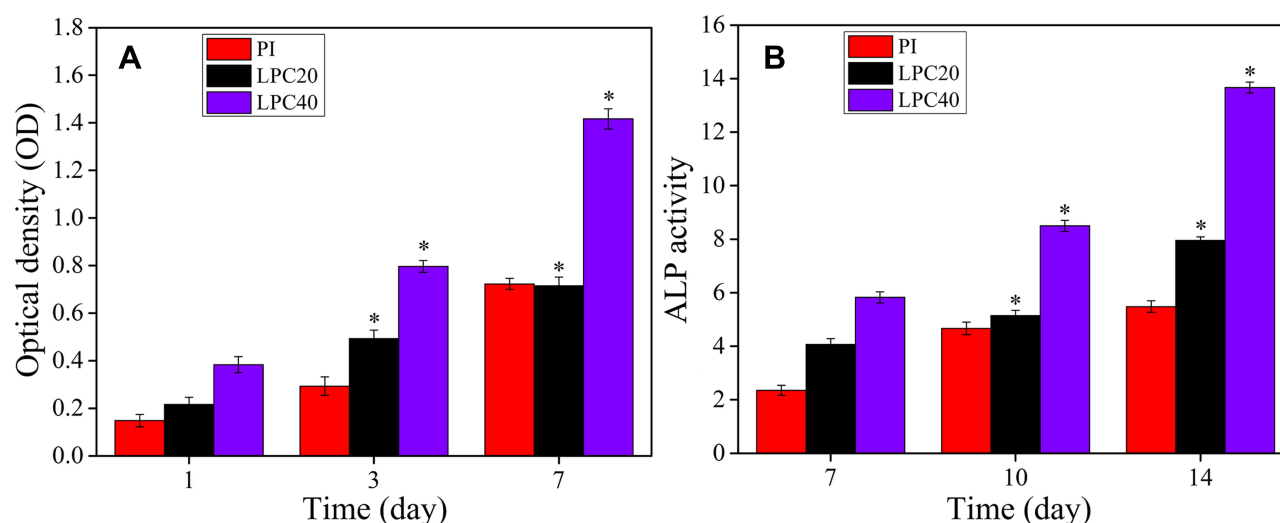


**Figure 8** CLSM of BMSC morphology on PI (A), LPC20 (B), and LPC40 (C) at 7 days after culturing.

**Abbreviations:** CLSM, confocal laser-scanning microscopy; BMSC, bone-marrow stromal cells; PI, polyimide; LPC20, 20 w% laponite ceramic–PI composite.

as well as in interbody cages for spinal fusion, the structure needs to sustain interlumbar pressure.<sup>27</sup> Therefore, implantable materials must have enough mechanical

strength for implantation without plastic fragmentation or deformation in vivo. In the present study, the compressive strength of LPCs gradually increased with increased LC



**Figure 9** OD values (A) and ALP activity (B) of BMSCs in samples after culturing for different periods. \* $p < 0.05$  for LPC40 and LPC20 vs PI).  
**Abbreviations:** OD, optical density; ALP, alkaline phosphatase; BMSCs, bone marrow stromal cells; PI, polyimide; LPC20, 20 w% laponite ceramic-PI composite.

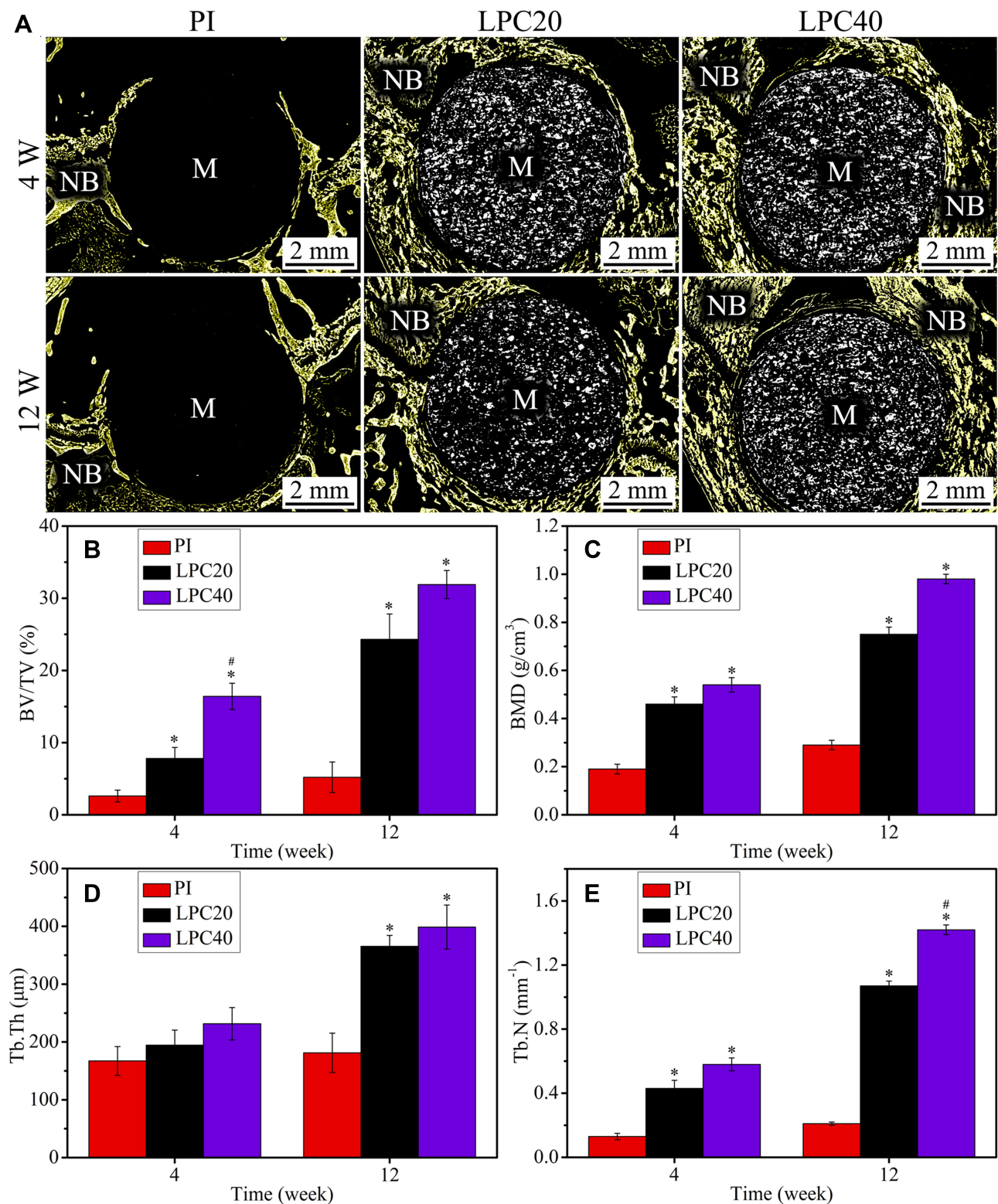
content, indicating that the LC played a key role in improvement in mechanical strength of the composites. In addition, the compressive strength of LPC40 was 137 MPa, which was close to cortical bone of the human body (55–190 MPa).<sup>28</sup> Furthermore, the compressive modulus of LPC40 was 5.6 GPa, close to that of human bone (3–20 GPa).<sup>29</sup>

Bioactive materials, such as bioglasses/ceramics, have the ability to form mineral apatite layers on their surfaces both in vitro and in vivo, which can be integrated with bone tissue by the apatite layer.<sup>29,30</sup> In this study, apatite formed on both LPC20 and LPC40 after immersion in SBFm while PI did not. Moreover, the formation of apatite on LPC40 was more than that for LPC20. Clearly, the improvement in apatite formation on LPCs was due to the increase in LC content. After LPC immersion into SBF, Mg, Si, and Li ion concentrations gradually increased with time, indicating that these ions continuously released from LPCs, due to the slight dissolution of LC in the composites. However, Ca and P ion concentrations obviously declined because of apatite formation, which consumed the Ca and P ions in SBF. The apatite-formation mechanism on the composites can be concluded as follows. Due to the presence of saturated Ca ions in SBF and rich Si-OH (caused by LC) on the composite surface, Si-OH groups were negatively charged, which attracted Ca ions through electrostatic interactions, and then P ions were attracted by Ca ions, which caused the formation of apatite.<sup>31</sup> In addition, after the samples had soaked in SBF, pH values in the solution for PI showed no

change. However, pH values in solutions for both LPC20 and LPC40 gradually increased, which led to a weak alkaline microenvironment due to the presence of LC that released Li, Mg, and Si ions during the soaking period. Previous studies have shown that a weak alkaline environment and bioactive ions (eg, Li, Mg, and Si) are very useful for cell proliferation and differentiation.<sup>32</sup>

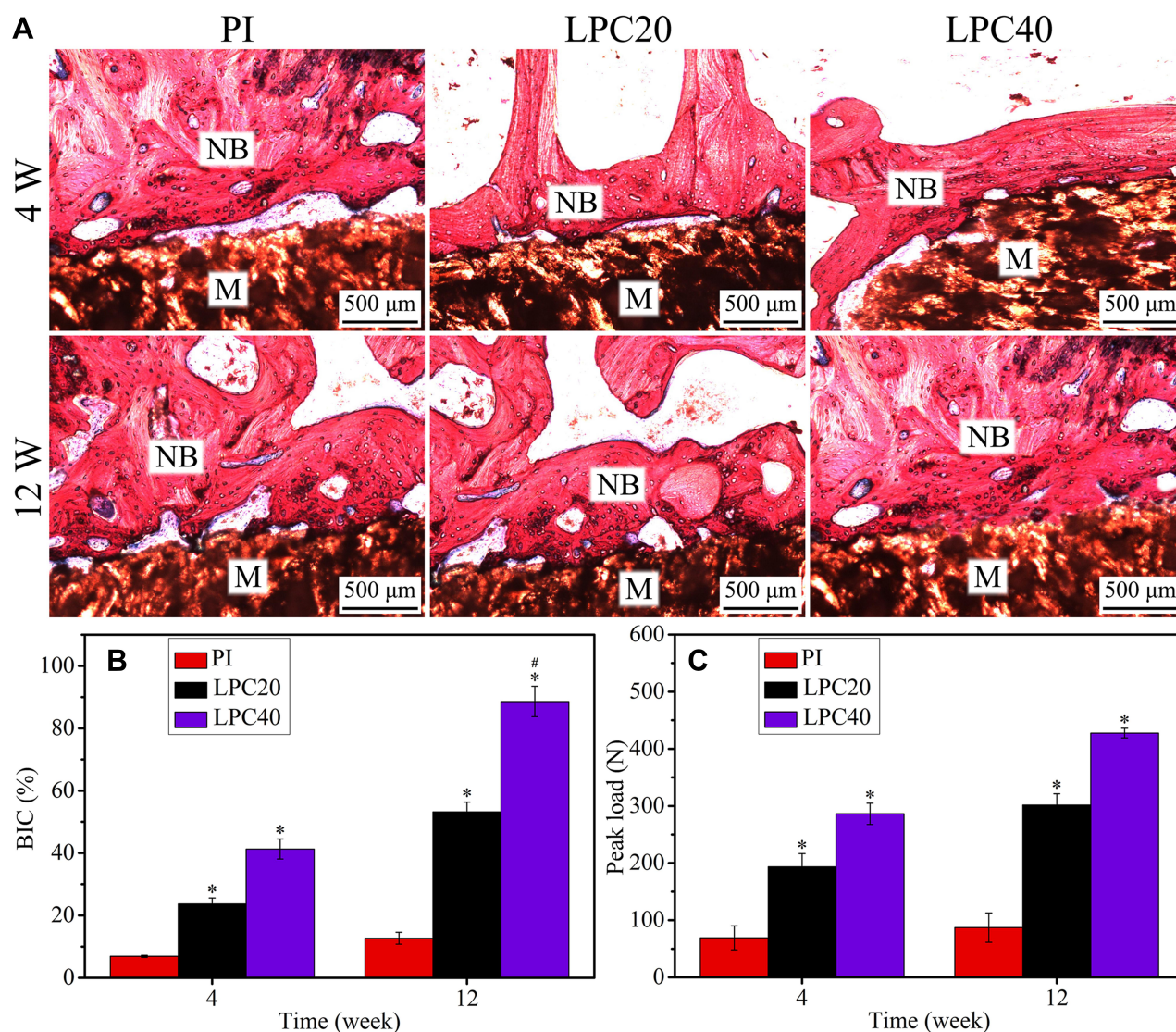
Cellular responses (including adhesion, proliferation, and osteogenic differentiation) to biomaterials are strongly influenced by not only surface physical properties (eg, composition, morphology, roughness, and hydrophilicity) but also chemical properties (eg, ion release and acid-base microenvironment), which are also closely related to cytocompatibility.<sup>33</sup> In the present study, more cells adhered and spread better on the surfaces of LPC40 and LPC20 than PI, demonstrating that the composites promoted cell adhesion and spreading. Compared with LPC20 and PI, the obvious increase in cell adhesion and spreading for LPC40 was ascribed to the presence of higher LC content. Bioactive implantable materials can promote not only cell adhesion but also cell proliferation and osteogenic differentiation, which could be closely correlated with NB regeneration.<sup>27</sup> In this study, LPC40 with high LC content significantly promoted the proliferation of BMSCs compared with LPC20 and PI. Therefore, the remarkable improvement in cell proliferation was ascribed to the increase of LC content in LPCs. In addition, ALP activity is usually regarded as an early marker for osteogenic differentiation, and the increase in ALP activity of cells on biomaterials can generally be considered an





**Figure 10** Reconstructed 3-D images from micro-CT of new bone (NB) tissue around implants of PI, LPC20, and LPC40 at 4 and 12 weeks after implantation (**A**) and quantitative analysis of BV/TV (**B**), BMD (**C**), Tb.Th (**D**), and Tb.N (**E**). \* $p < 0.05$  vs PI; # $p < 0.05$  for LPC40 vs LPC20.

**Abbreviations:** CT, computed tomography; BV/TV, bone volume/total volume; BMD, bone-mineral density; M, material; Tb.Th, trabecular thickness; Tb.N, trabecular number; PI, polyimide; LPC20, 20 w% laponite ceramic-PI composite.



**Figure 11** Images from histological sections of PI, LPC20, and LPC40 at 4 and 12 weeks after implantation (**A**) and quantitative analysis of BIC (**B**) and pushout loads (**C**) of implants at 4 and 12 weeks after implantation. \* $p < 0.05$  vs PI; # $p < 0.05$  for LPC40 vs LPC20.

**Abbreviations:** BIC, bone-implant contact; M, material; NB, new bone; PI, polyimide; LPC20, 20 w% laponite ceramic-PI composite.

indicator to promote osteogenic differentiation.<sup>34</sup> In the present study, LPC40 remarkably improved ALP activity in cells compared with LPC20 and PI. Therefore, the significant promotion of osteogenic differentiation of BMSCs was due to high LC content, which improved the surface properties of LPC40.

The in vivo results from micro-CT images and quantitative analysis showed that the amount of NB around LPC40 was higher than LPC20 and LPC20 was higher than PI. Therefore, compared with PI and LPC20, LPC40 with high LC content obviously promoted osteogenesis in vivo. Osseointegration is considered the bonding of bone tissue to implant that can achieve early loading and long-term stability of the implant.<sup>35</sup> A significant increase

in pullout loads in implant detachment from bone can be used to indicate improvement in osseointegration.<sup>36</sup> In the present study, the pushout loads of both LPC40 and LPC20 significantly increased from 4 to 12 weeks, while no significant change for PI was found. In addition, LPC40 possessed the highest pushout loads (indicating superior osseointegration), while PI exhibited the lowest (indicating poor osseointegration). Therefore, compared with PI and LPC20, LPC40 with high LC content obviously improved NB formation and osseointegration.

Histological evaluation demonstrated that at the interface between NB and implants, more NB tissue was in contact with the surfaces of both LPC40 and LPC20 than PI at both 4 and 12 weeks. No obvious gap at the interface



between NB and implants was found for LPC40, while obvious gaps appeared for PI at 12 weeks. Furthermore, at 12 weeks, compared with LPC20 and PI, LPC40 achieved the best contact with NB, displaying excellent osseointegration. BIC, defined as the percentage of NB tissue covering the implant surface, is one of the critical measurements applied to quantify the degree of osseointegration.<sup>37</sup> In the present study, the BIC of both LPC40 and LPC20 increased with time, while no obvious change for PI during entire implantation period. At 12 weeks, the BIC of PI was lowest and LPC40 highest, indicating the best osseointegration. It has been reported that bioactive materials not only stimulate NB formation but also improve osseointegration.<sup>38</sup>

Surface characteristics (eg, chemical composition, roughness, hydrophilicity, and ion release) of biomaterials greatly influence osteoblast responses (adhesion, proliferation, and osteogenic differentiation) and NB formation around the implants, both in vitro and in vivo.<sup>39,40</sup> In the present study, compared with PI and LPC20, LPC40 containing higher LC content with improved surface properties (eg, roughness and hydrophilicity) not only stimulated osteoblast responses in vitro but also promoted NB formation in vivo. Previous studies have revealed that dissolution products containing Si, Mg, and Li ions from bioactive ceramics/glasses stimulated osteoblast proliferation and osteogenic differentiation.<sup>41,42</sup> In the present study, compared with PI and LPC20, LPC40 containing higher LC content released more Li, Mg, and Si ions, which was critical to stimulating cellular responses and promoting NB regeneration in vivo. Moreover, formation of apatite exists between the bioactive implant surface and NB in vivo, which closely resembles bone mineral in composition, as well as a structure that serves as a foundation for NB formation and osseointegration.<sup>29,30</sup> In this study, compared with PI and LPC20, LPC40 containing higher LC content induced more mineralized apatite formation, which stimulated osteoblast responses and promoted osteogenesis and osseointegration. Therefore, compared with PI and LPC20, improvements osteoblast responses in vitro and osteogenesis and osseointegration in vivo for LPC40 contributed to the presence of higher LC content. In summary, the positive responses of BMSC/bone tissue to LPC40 were ascribed to the presence of higher LC content, which caused improvements in surface properties (roughness and hydrophilicity), ion (Li, Mg and Si) release, and apatite formation, as well as the formation of weak alkaline microenvironment, which might have been synergistic effects on final results. As a result, incorporation of LC into PI significantly enhanced

surface physicochemical properties, thereby improving the biological performance of LPCs. LPC40 would be an alternative candidate for bone repair.

## Conclusion

Bioactive composites containing LC and PI (LPC) were prepared by melt processing for potential orthopedic applications. Compared with PI, the addition of LC into PI obviously improved compressive strength, surface hydrophilicity, and roughness of LPCs, which increased with LC content increasing. Moreover, in comparison with LPC20 and PI, LPC40 with high LC content significantly improved apatite mineralization, displaying good bioactivity. In addition, compared with LPC20 and PI, LPC40 with high LC content significantly stimulated responses (attachment, proliferation, and ALP activity) of BMSCs in vitro. Furthermore, in comparison with LPC20 and PI, LPC40 with high LC content obviously promoted osteogenesis and osseointegration in vivo. In short, incorporation of LC into PI significantly enhanced surface physicochemical properties, thereby improving the biological performance of LPCs. Consequently, LPC40 with better biocompatibility and bioactivity might have great potential as bone implants for bone repair.

## Acknowledgment

This work was supported by Jilin Province Science and Technology Development Project (20190201244JC).

## Disclosure

The authors report no conflicts of interest in this work.

## References

1. Liu XY, Chu PK, Ding CX. Surface modification of titanium, titanium alloys, and related materials for biomedical applications. *Mat Sci Eng R*. 2004;47:49–121. doi:10.1016/j.mser.2004.11.001
2. Zhu CY, Lv YT, Qian C, et al. Microstructures, mechanical, and biological properties of a novel Ti-6V-4V/zinc surface nanocomposite prepared by friction stir processing. *Int J Nanomed*. 2018;13:1881–1898. doi:10.2147/ijn.s154260
3. Bobbert FSL, Lietaert K, Eftekhari AA, et al. Additively manufactured metallic porous biomaterials based on minimal surfaces: A unique combination of topological, mechanical, and mass transport properties. *Acta Biomater*. 2017;53:572–584. doi:10.1016/j.actbio.2017.02.024
4. Witte F, Kaeseb V, Haferkamp H, et al. In vivo corrosion of four magnesium alloys and the associated bone response. *Biomaterials*. 2005;26:3557–3563. doi:10.1016/j.biomaterials.2004.09.049
5. Feng XP, Wang GR, Neumann K, et al. Synthesis and characterization of biodegradable poly (ether-ester) urethane acrylates for controlled drug release. *Mat Sci Eng C-Mater*. 2017;74:270–278. doi:10.1016/j.msec.2016.12.009

6. Wang HN, Li YB, Zuo Y, Li JH, Ma SS, Cheng L. Biocompatibility and osteogenesis of biomimetic nano-hydroxyapatite/polyamide composite scaffolds for bone tissue engineering. *Biomaterials*. 2007;28:3338–3348. doi:10.1016/j.biomaterials.2007.04.014
7. Kurtz SM, Devine JN. PEEK biomaterials in trauma, orthopedic, and spinal implants. *Biomaterials*. 2007;28:4845–4869. doi:10.1016/j.biomaterials.2007.07.013
8. Gouzman I, Grossman E, Verker R, Atar N, Bolker A, Eliaz N. Advances in Polyimide-Based Materials for Space Applications. *Adv Mater*. 2019;31(18):1807738. doi:10.1002/adma.201807738
9. Saadatinia Z, Mosanenzadeh SG, Esmailzadeh E, Naguib HE. A high performance triboelectric nanogenerator using porous polyimide aerogel film. *Sci Rep*. 2019;9:1370. doi:10.1038/s41598-018-38121-1
10. Wurth S, Capogrosso M, Raspopovic S, et al. Long-term usability and bio-integration of polyimide-based intraneural stimulating electrodes. *Biomaterials*. 2017;122:114–129. doi:10.1016/j.biomaterials.2017.01.014
11. de la Oliva NA, Navarro X, Del Valle J. Time course study of long-term biocompatibility and foreign body reaction to intraneural polyimide-based implants. *J Biomed Mater Res A*. 2018;106:746–757. doi:10.1002/jbm.a.36274
12. Ribeiro R, Banda S, Ounaies Z, Ucisik H, Usta M, Liang H. A tribological and biomimetic study of PI-CNT composites for cartilage replacement. *J Mater Sci*. 2012;47:649–658. doi:10.1007/s10853-011-5835-7
13. Zhao Y, Wong HM, Lui SC, et al. Plasma surface functionalized polyetheretherketone for enhanced osseointegration at bone-implant interface. *ACS Appl Mater Inter*. 2016;8:3901–3911. doi:10.1021/acsami.5b10881
14. Carrado A, Perrin-Schmitt F, Le QV, et al. Nanoporous hydroxyapatite/sodium titanate bilayer on titanium implants for improved osteointegration. *Dent Mater*. 2017;33(3):321–332. doi:10.1016/j.dental.2016.12.013
15. Kokubo T, Takadama H. How useful is SBF in predicting in vivo bone bioactivity? *Biomaterials*. 2006;27:2907–2915. doi:10.1016/j.biomaterials.2006.01.017
16. Michael FM, Khalid M, Walvekar R, et al. Effect of nanofillers on the physico-mechanical properties of load bearing bone implants. *Mat Sci Eng C-Mater*. 2016;67:792–806. doi:10.1016/j.msec.2016.05.037
17. Ding L, Hu Y, Luo Y, et al. LAPONITE (R)-stabilized iron oxide nanoparticles for in vivo MR imaging of tumors. *Biomater Sci*. 2016;4(3):474–482. doi:10.1038/10.1039/c5bm00508f
18. Afewerki S, Magalhaes LSSM, Silva ADR, et al. Bioprinting a synthetic smectic clay for orthopedic applications. *Adv Healthc Mater*. 2019;8:1900158. doi:10.1002/adhm.201900158
19. Wang SG, Tomas H, Shi XY. Electrospun laponite-doped poly (lactic-co-glycolic acid) nanofibers for osteogenic differentiation of human mesenchymal stem cells. *J Mater Chem*. 2013;172:E139–E139. doi:10.1016/j.jconrel.2013.08.224
20. Gaharwar AK, Rivera CP, Wu CJ, Schmidt G. Transparent, elastomeric and tough hydrogels from poly (ethylene glycol) and silicate nanoparticles. *Acta Biomater*. 2011;7:4139–4148. doi:10.1016/j.actbio.2011.07.023
21. Ghadiri M, Chrzanowski W, Lee WH, Rohanizadeh R. Layered silicate clay functionalized with amino acids: wound healing application. *RSC Adv*. 2014;4:35332–35343. doi:10.1039/c4ra05216a
22. Li T, Liu ZL, Xiao M, et al. Impact of bone marrow mesenchymal stem cell immunomodulation on the osteogenic effects of laponite. *Stem Cell Res Ther*. 2018;9:100. doi:10.1186/s13287-018-0818-0
23. Liu C, Sun J. Potential application of hydrolyzed fish collagen for inducing the multidirectional differentiation of rat bone marrow mesenchymal stem cells. *Biomacromolecules*. 2014;15:436–443. doi:10.1021/bm401780v
24. Li T, Wang N, Chen S, Lu R, Li HY, Zhang ZT. Antibacterial activity and cytocompatibility of an implant coating consisting of TiO<sub>2</sub> nanotubes combined with a GL13K antimicrobial peptide. *Int J Nanomed*. 2017;12:2995–3007. doi:10.2147/ijn.s128775
25. Chen BQ, Kankala RK, Chen AZ, et al. Investigation of silk fibroin nanoparticle-decorated poly (L-lactic acid) composite scaffolds for osteoblast growth and differentiation. *Int J Nanomed*. 2017;12:1877–1890. doi:10.2147/ijn.s129526
26. Dunseath O, Smith EJW, Al-Jeda T, et al. Studies of black diamond as an antibacterial surface for gram negative bacteria: the interplay between chemical and mechanical bactericidal activity. *Sci Rep*. 2019;9:8815. doi:10.1038/s41598-019-45280-2
27. Hu C, Ashok D, Nisbet DR, Gautam V. Bioinspired surface modification of orthopedic implants for bone tissue engineering. *Biomaterials*. 2019;219:119366. doi:10.1016/j.biomaterials.2019.119366
28. Li X, Liu XM, Wu SL, Yeung KWK, Zheng YF, Chu PK. Design of magnesium alloys with controllable degradation for biomedical implants: from bulk to surface. *Acta Biomater*. 2016;45:2–30. doi:10.1016/j.actbio.2016.09.005
29. Agarwal S, Curtin J, Duffy B, Jaiswal S. Biodegradable magnesium alloys for orthopaedic applications: A review on corrosion, biocompatibility and surface modifications. *Mater Sci Eng C-Mater Biol Appl*. 2016;68:948–963. doi:10.1016/j.msec.2016.06.020
30. Ha Y, Yang J, Tao F, et al. Phase-transited lysozyme as a universal route to bioactive hydroxyapatite crystalline film. *Adv Funct Mater*. 2018;28:1704476. doi:10.1002/adfm.201704476
31. Qin CL, Hu QF, Li YY, et al. Novel bioactive Fe-based metallic glasses with excellent apatite-forming ability. *Mat Sci Eng C-Mater*. 2016;69:513–521. doi:10.1016/j.msec.2016.07.022
32. Flinck M, Kramer SH, Pedersen SF. Roles of pH in control of cell proliferation. *Acta Physiol*. 2018;223:e13068. doi:10.1111/apha.13068
33. Shah FQ. Fluoride-containing bioactive glasses: glass design, structure, bioactivity, cellular interactions, and recent developments. *Mat Sci Eng C-Mater*. 2016;58:1279–1289. doi:10.1016/j.msec.2015.08.064
34. Chen DJ, Gong YY, Xu L, Zhou MJ, Li J, Song JL. Bidirectional regulation of osteogenic differentiation by the FOXO subfamily of Forkhead transcription factors in mammalian MSCs. *Cell Proliferat*. 2019;52:e12540. doi:10.1111/cpr.12540
35. Yang X, Ricciardi BF, Dvorzhinskiy A, et al. Intermittent parathyroid hormone enhances cancellous osseointegration of a novel murine tibial implant. *J Bone Joint Surg Am*. 2015;97:1074–1083. doi:10.2106/JBJS.N.01052
36. Sivoletta S, Brunello G, Ferroni L, et al. A novel in vitro technique for assessing dental implant osseointegration. *Tissue Eng Part C-Me*. 2016;22(2):132–141. doi:10.1089/ten.tec.2015.0158
37. Veronesi F, Giavaresi G, Fini M, et al. Osseointegration is improved by coating titanium implants with a nanostructured thin film with titanium carbide and titanium oxides clustered around graphitic carbon. *Mat Sci Eng C-Mater*. 2017;70:264–271. doi:10.1016/j.msec.2016.08.076
38. Deng Y, Gao XY, Shi XL, et al. Graphene oxide and adiponectin-functionalized sulfonated poly (etheretherketone) with effective osteogenicity and remotely repeatable photodisinfection. *Chem Mat*. 2020;32:2180–2193. doi:10.1021/acs.chemmater.0c00290
39. Souza JCM, Sordi MB, Kanazawa M, et al. Nano-scale modification of titanium implant surfaces to enhance osseointegration. *Acta Biomater*. 2019;94:112–131. doi:10.1016/j.actbio.2019.05.045
40. Dong TS, Duan CY, Wang S, et al. Multifunctional surface with enhanced angiogenesis for improving long-term osteogenic fixation of poly (ether ether ketone) implants. *ACS Appl Mater Interfaces*. 2020;12:14971–14982. doi:10.1021/acsami.0c02304
41. Deng Y, Wei SC, Yang L, Yang WZ, Dargusch MS, Chen ZG. A novel hydrogel surface grafted with dual functional peptides for sustaining long-term self-renewal of human induced pluripotent stem cells and manipulating their osteoblastic maturation. *Adv Funct Mater*. 2018;28:1705546. doi:10.1002/adfm.201705546
42. Hoppe A, Guldal NS, Boccaccini AR. A review of the biological response to ionic dissolution products from bioactive glasses and glass-ceramics. *Biomaterials*. 2011;32:2757–2774. doi:10.1016/j.biomaterials.2011.01.004



**International Journal of Nanomedicine****Dovepress****Publish your work in this journal**

The International Journal of Nanomedicine is an international, peer-reviewed journal focusing on the application of nanotechnology in diagnostics, therapeutics, and drug delivery systems throughout the biomedical field. This journal is indexed on PubMed Central, MedLine, CAS, SciSearch®, Current Contents®/Clinical Medicine,

Journal Citation Reports/Science Edition, EMBase, Scopus and the Elsevier Bibliographic databases. The manuscript management system is completely online and includes a very quick and fair peer-review system, which is all easy to use. Visit <http://www.dovepress.com/testimonials.php> to read real quotes from published authors.

Submit your manuscript here: <https://www.dovepress.com/international-journal-of-nanomedicine-journal>