

Role of Lipids and Apolipoproteins in Predicting the Prognosis of Hepatocellular Carcinoma After Resection

This article was published in the following Dove Press journal:
OncoTargets and Therapy

Xiao-Chun Ni¹
Yong Yi²
Yi-Peng Fu³
Xiao-Yan Cai⁴
Gao Liu²
Jin-Long Huang²
Wei Gan²
Jie Xu⁵
Shuang-Jian Qiu⁶

¹Shanghai Ninth People's Hospital, General Surgery, Shanghai, People's Republic of China; ²Liver Cancer Institute, Hepatic Surgery, Shanghai, People's Republic of China; ³Obstetrics & Gynecology Hospital of Fudan University, Shanghai, People's Republic of China; ⁴Shanghai Pudong Gongli Hospital, General Surgery, Shanghai, People's Republic of China; ⁵Shanghai Ninth People's Hospital, Infection Disease, Shanghai, People's Republic of China; ⁶Liver Cancer Institute, Zhongshan Hospital, Fudan University, Shanghai 200032, People's Republic of China

Correspondence: Jie Xu
Shanghai Ninth People's Hospital,
Infection Disease, 280 Mohe Road,
Shanghai, People's Republic of China
Email dx.xu@aliyun.com

Shuang-Jian Qiu
Liver Cancer Institute, Zhongshan
Hospital, Fudan University, 180 Fenglin
Road, Shanghai 200032, People's Republic
of China
Tel/Fax +86-21-64037181
Email qiushuangjianzs@163.com

Purpose: To further clarify the association between abnormal levels of serum lipid components as the main features of dyslipidaemia and hepatocellular carcinoma, which remains unclear.

Patients and Methods: We examined the serum level of lipids and apolipoproteins pattern in 471 patients undergoing curative resection for HCC, 193 patients with chronic liver disease, and 104 patients with benign liver diseases. We performed uni- and multivariate analyses to evaluate the predictive roles of lipids and apolipoproteins for recurrence and survival of HCC in a training cohort of 242 patients and then validated in a cohort of 229 patients.

Results: The majority circulating lipid and apolipoprotein levels such as ApoA1, HDL, and LDL in chronic liver disease and HCC were slightly significantly decreased as compared to those in benign lesion. But no significant differential expression patterns of lipids and apolipoproteins were observed between chronic liver hepatitis and HCC. Multivariable analysis identified ApoA1 as a key parameter related to recurrence and survival in both training and validation cohorts. Moreover, we further demonstrated that low ApoA1 was an independent prognostic factor of poor early recurrence in two cohorts.

Conclusion: Although the alterations of circulating lipids and apolipoproteins were observed in HCC, none of lipids or apolipoproteins could serve as a diagnostic marker. Serum ApoA1 merits consideration as a novel prognostic marker for patients with HCC undergoing surgery since it predicts early recurrence and survival, especially for early stage patients and may improve the prognostic stratification of patients for clinical management and promote HCC clinic outcomes.

Keywords: apolipoprotein, prognosis, hepatocellular carcinoma, surgery

Introduction

Hepatocellular carcinoma (HCC) is the most prevalent cancer with a dismal prognosis worldwide.¹ Until now, surgical resection has remained the primary treatment aiming at cure, however the prognosis of patients with HCC remains poor, mainly due to the fact that most patients are diagnosed at advanced stages and a high incidence of tumor recurrence post-surgery.² Despite HCC patients who receive curative therapy being in very early/early stage tumor, early recurrence is considered as an important adverse prognostic factor after curative therapy for HCC.^{3,4} Therefore, sensitive and effective biomarkers are urgently needed for early diagnosis and accurate prediction of prognosis for patients undergoing curative

resection. Identification of patients after curative surgery who are at high risk of early recurrence allows clinicians to provide active surveillance to detect recurrent HCC at its earliest stage, and to improve the prognosis of this population when curative therapy may still be feasible.

Many epidemiological studies have consistently linked dyslipidaemia with increased incidence and death from diverse types of cancer.⁵⁻⁷ The liver plays a key role in the metabolism of lipids and lipoproteins. The majority of patients with HCC are frequently accompanied by liver cirrhosis, with chronic hepatitis B and C as the major etiological agents.⁸ Therefore liver function is clearly impaired in HCC, leading to a distinctly abnormal pattern of serum lipids and lipoproteins. It has been indicated that high-density lipoprotein (HDL) and its major apolipoproteins, ApoA1 and ApoA2, are frequently reduced in patients suffering from HCC.^{9,10} It also demonstrates that plasma triglycerides (TG) and total cholesterol (TC) decrease in patients with HCC.¹¹ In contrast, Alsabti reported that serum TG and TC in HCC patients were increased when compared to those with cirrhosis.¹² Ooi et al reported that plasma TG levels in HCC patients were not significantly different compared with controls.¹³ A potential explanation for these conflicting results could be the focus on the level of lipids or lipoproteins, without an extensive list of potential confounders that were not always controlled such as body mass index (BMI) and glucose metabolism agents.

Ahaneku et al analyzed lipid profiles in cirrhosis patients with or without HCC and found that plasma HDL-C, HDL-PL and HDL-C/HDL-PL were significantly lower in HCC patients than those in the controls.¹⁴ It is suggested that variations in the level of plasma lipids and apolipoproteins may assist in describing the nature of these two forms of liver disease. More striking is the discovery that ApoA1 was differentially expressed between chronic hepatitis C virus (HCV) infection and HCC patients using Mass Spectrometric analysis, suggested ApoA1 might be a candidate biomarker for early diagnosis, prognosis, and monitoring of HCC.¹⁵ A similar result was found by Steel et al that ApoA1 had a diagnostic role in patients with HCC compared with hepatitis B virus-positive individuals.¹⁶ These results suggested that plasma lipid profile might be a potential candidate to differentiate HCC from other liver disease and normal populations, and acted as diagnostic biomarkers of HCC. However, the limitations of the studies mentioned above are obvious, such as small numbers of cases enrolled and the

techniques used, unsuitable for large-scale analysis in clinical application. Therefore, the accuracy and reliability of the experimental results mentioned have yet to be further verified.

So far sparse studies have investigated the use of serum lipids as biomarkers for diagnosing HCC and predicting the recurrence or survival of patients with HCC. In this study, we investigated the blood lipids and apolipoproteins pattern including ApoA1, ApoB, ApoE, TC, TG, HDL, and low-density lipoprotein (LDL) in HCC, and other liver diseases including chronic hepatitis, cirrhosis and benign disease, and explored to identify their plausibility as novel diagnostic biomarker candidates for HCC. Furthermore, we analyzed the associations of circulating lipids and apolipoproteins levels with clinicopathological characteristics and prognosis of the patients with HCC.

Patients and Methods

Study Population

A total of 471 patients with primary HCC who underwent curative liver resection between December 2010 and January 2012 at Liver Cancer Institute, Zhongshan Hospital, Fudan University were included in this retrospective study. All patients had histologically confirmed HCC. None of the patients had received presurgical cancer treatment or were suffering from a recurrence of HCC or from any other known malignancy. The patients were randomly divided into a training cohort (n=242) and a validation cohort (n=229). In addition, 140 patients with chronic hepatitis and 53 with cirrhosis, and 104 benign liver diseases, including hepatic hemangioma, hepatic cyst and focal nodular hyperplasia were also enrolled in this study. Benign patients had normal liver function in this cohort relative to normal, age matched donors. The present study was approved by the Research Ethics Committee of Zhongshan Hospital. This study also complied with the Declaration of Helsinki, and written informed consent was obtained from all patients including the parents or legal guardians of patients under the age of 18.

All lipid and apolipoprotein blood samples were collected at baseline from surgery participants before operation and non-surgery participants during first week of admission. Lipids and apolipoproteins profiles were studied descriptively in relation to potential confounders of metabolism including BMI, blood concentrations of C reactive protein (CRP) as a biomarker for systemic

inflammation, fasting blood glucose, Hemoglobin A1C as well as insulin resistance (C peptide, insulin). As an index of insulin resistance, we used the homeostatic model assessment of insulin resistance (HOMA2-IR). The cutoff values for each variable were based on the range of clinical normals. Clinical stages of tumor were determined according to the TNM classification system of International Union Against Cancer. Tumor differentiation was assigned by Edmondson-Steiner classification.

Follow-up procedures were described in our previous study.¹⁷ Overall survival (OS) was defined as the interval between surgery and time of either death or last follow-up. Disease free survival (DFS) was defined as the interval between surgery and time of recurrence, or the date of last follow-up without recurrence. Tumor recurrence was categorized into early and late recurrence using a cutoff value of 2 years. The overall median follow-up time was 70 months (7–79 months).

Statistical Analysis

SPSS version 20 (IBM Corporation, Armonk, NY, USA) was used to analyze the data. Continuous variables were compared using the Mann–Whitney *U*-test or One-way Anova test. Categorical variables were compared using the χ^2 test or Fisher's exact test. The Spearman rank correlation test was performed to determine any associations between variables. The overall survival and disease-free survival were computed using the Kaplan–Meier method and were calculated using the Log rank test. A Cox regression hazard model was utilized for the multivariate analysis. To avoid colinearity bias, the lipids and apolipoproteins were preliminarily tested on a first multivariate model that included the individual variables composing the TNM stage. All statistical tests were two-sided and *p*-values <0.05 were interpreted as significant.

Results

Measurement of Serum Lipids and Apolipoproteins Pattern in Liver Disease

We first compared the serum lipid and apolipoprotein levels in four different groups. In patients with HCC, the serum level of ApoA1 was statistically lower than that in patients with benign liver disease, but higher than that in liver cirrhosis group, and no significant difference was seen between HCC and hepatitis groups. In addition, the expression pattern of HDL was similar to ApoA1. Serum ApoE level was significantly higher in HCC group than in chronic liver hepatitis group, whereas it did not

differ significantly between the HCC and other two groups. Compared with liver cirrhosis group, the TG and LDL levels were significantly elevated in HCC, liver hepatitis and benign liver disease groups, whereas no significant expression levels were shown among these three groups. Moreover, we did not find any significant differences in serum ApoB or TC levels among all four of these groups. (Figure 1 and Figure S1)

Correlations Between the Lipids and Apolipoproteins Level and Clinical Characteristics

As shown in Table 1, there were no significant differences in relationships between lipids and apolipoproteins level and clinical background factors such as age, liver cirrhosis, alanine aminotransferase (ALT), albumin (ALB), alpha-fetoprotein (AFP), or serum total bilirubin (TB). However, ApoA1, ApoE and HDL had close associations with gender. With regard to metabolism profiles, TG and HDL had positive relations with BMI; LDL and ApoB were associated with the glycometabolism indexes as blood glucose (GLU) and hemoglobin A1C (HbA1C), and TG had close relations with HbA1C and insulin resistance index HOMA2-IR. However, most of lipids and apolipoproteins have no close relations to metabolism parameters in HCC patients. Finally, with respect to tumor related covariates, we revealed that ApoA1 was significantly related to vascular invasion, and LDL was associated with tumor size. However, no significant relations were observed between most lipids and tumor related factors.

Prediction of Tumor Recurrence and Patient Survival in Training Cohort

We next explored the prognostic significance of lipids and apolipoproteins in patients with HCC. The baseline characteristics of the patients had no significant differences between the training and validation cohorts (Table S1). With the X-tile 3.6.1 software, the optimal cutoff values of each level of lipids and apolipoproteins were set as to separate patients into low and high groups in the training cohort.¹⁸ The divisions of the validation cohort were also based on these numerical standards. Univariate analysis indicated that lower ApoA1 was significantly correlated with poor prognosis of HCC patients. The cumulative OS and DFS rate of patients in the low ApoA1 group was significantly lower than that of patients in the high ApoA1 group (5-year OS rate: 65 vs 78.8%, *P* = 0.02; 5-year DFS rate: 45.5 vs 59.6%, *P*=0.01) (Figure 2). In addition, elevated

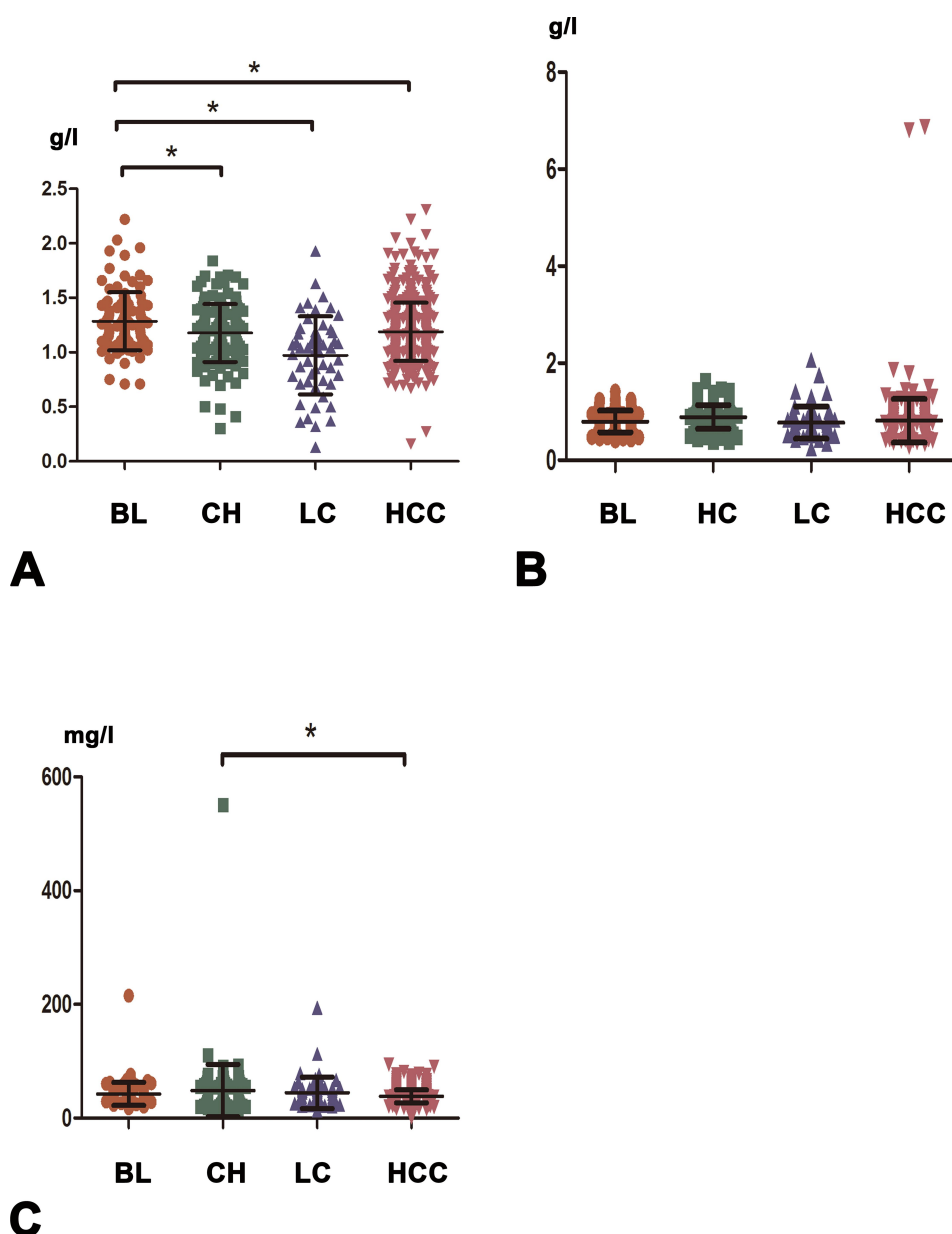


Figure 1 The blood expression levels of ApoA1, ApoB, and ApoE in benign liver disease (BL), chronic hepatitis (CH), liver cirrhosis (LC), and hepatocellular carcinoma (HCC) groups. **(A)** ApoA1. **(B)** ApoB. **(C)** ApoE. * indicates $P < 0.05$.

baseline level of LDL was significantly associated with reduced OS and DFS, while other lipids were not significant predictive factors after univariate analysis ([Figure S2](#) and [S3](#)). Multivariate survival analysis conducted by the Cox regression model showed that ApoA1 was confirmed as an independent predictor of both OS and DFS (OS: Hazard ratio (HR): 0.587; 95% confidence interval (CI): 0.352–0.979; $P=0.04$; DFS: Hazard ratio (HR): 0.607; 95% confidence interval (CI): 0.413–0.893; $P=0.01$). Then a multivariate Cox regression model was used to further assess the independent prognostic ability of the TNM stage. The analysis

showed that low ApoA1 remained as an independent unfavorable factor influencing the OS and DFS (OS: HR: 0.517; 95% CI: 0.309–0.866; $P=0.01$; DFS: HR: 0.537; 95% CI: 0.363–0.793; $P=0.002$) ([Table 2](#) and [Table S2](#)).

Prognostic Value of Lipids and Apolipoproteins Level in the Validation Cohort

Lipids and apolipoproteins were further assessed for their prognostic power in an independent cohort of 229 patients. We also found that HCC patients with lower serum ApoA1

levels had significantly worse prognosis than those with higher serum ApoA1 levels. In univariate analysis of OS, ApoA1 and ApoE were univariate predictors of OS ($P=0.01$; $P=0.02$, respectively) (Figure 2 and Figure S4). Cox regression analysis demonstrated that lower serum ApoA1 level was an independent indicator of OS (HR: 0.418; 95% CI: 0.234–0.747; $P=0.003$). In addition, a higher serum ApoE level was also an independent risk factor for OS (HR: 1.897; 95% CI: 1.123–3.204; $P=0.02$). In univariate analysis of DFS, lower ApoA1 level was a significant factor of poor prognosis ($P=0.007$), and Cox regression analysis showed that ApoA1 remained as an independent prognostic factor for DFS (HR: 0.609; 95% CI: 0.409–0.908; $P=0.02$) (Table S3 and Table S4). However, other lipids and apolipoproteins including CHOL, TG, HDL, LDL and ApoB did not show any statistically significant associations with OS and DFS (Figure S4 and S5).

Serum ApoA I Levels Correlate with Early Recurrence in the Training and Validation Cohort

Furthermore, the prognostic significance of serum ApoA1 levels within α -fetoprotein (AFP) ≤ 400 ng/mL or/and early recurrence subgroups was investigated. Among patients with an AFP concentration of ≤ 400 ng/mL, the OS and DFS rate in low ApoA1 patients were significantly lower than that in high ApoA1 patients in the training cohort (OS: 68.3% vs 83.1%, $P=0.006$; DFS: 49% vs 66.7%, $P=0.01$, respectively). In accordance with prognosis value of ApoA1 in the training cohort, ApoA1 remained associated with the OS and DFS rate in the lower AFP subgroup in the validation cohort (OS: 72.2% vs 86.4%, $P=0.025$; DFS: 47.4% vs 62.1%, $P=0.04$, respectively).

In addition, it is worth noting that as for early recurrence in the training cohort, serum ApoA1 level was significantly associated with it in the univariate analysis. In further multivariate analysis, the serum ApoA1 level was an independent indicator for early recurrence (HR: 0.51; 95% CI: 0.297–0.875; $P=0.02$). Similar results were confirmed in the validation cohorts, lower ApoA-1 was an independent predictor of early recurrence (HR, 0.478; 95% CI: 0.278–0.881; $P=0.008$) (Figure 3, Table 3 and Table S5). Previous studies have shown that predictive factors for early recurrence are mainly tumor-related clinicopathologic factors (ie, tumor size, tumor number, tumor marker, microscopic vascular invasion).^{3,19} The results of the

present study also show that early recurrence was associated at multivariate analysis with larger tumor size, vascular invasion, and advanced TNM stage. Further stratification analyses were conducted in subgroups based on AFP, tumor size, number, vascular invasion, and TNM stage. We found that low ApoA1 was remarkably related to the early recurrence of patients with an AFP concentration of ≤ 400 μ g/L and tumor size ranging from 2cm to 5cm and TNM stage I and solitary tumor in both the training and validation cohort. By contrast, no significant associations were observed between ApoA1 level and early recurrence rate in vascular invasion negative subgroups (Figure S7 and S8).

Discussion

To date the association between lipids and apolipoproteins and HCC has not been thoroughly investigated and there is scanty data comprehensively reported concerning their clinical significance in relation to HCC. In this study, we analyzed the serum lipid and apolipoprotein levels in patients with benign lesions, chronic hepatitis, liver cirrhosis and HCC, and found that the majority of circulating lipid and apolipoprotein levels in chronic liver disease and HCC were slightly to significantly decreased as compared with those in benign lesion. This result was in accordance with some previous studies.^{9,10,13,20}

As we know, the currently available serological biomarkers such as AFP are insufficiently sensitive or specific for use in diagnostic assays,^{21,22} thus novel serum markers capable of precise detection of HCC at an early stage and accurate monitoring over a long period for HCC are needed. Proteomic technology has revealed certain apolipoproteins can distinguish between serum from patients with cancer and healthy control subjects with high sensitivity and specificity, for instance, ApoA1. Mustafa et al have discovered proteomic alterations of ApoA1 in HCC serum samples, a decreased level of ApoA1 relative to that in HCV. Similar to the above result, Liu et al found a great discriminatory value of ApoA1 between the two patient populations with HCC and liver cirrhosis, and suggested ApoA1 had a diagnostic ability in detecting HCC.²³ According to above-mentioned results, it seems that the conclusion on ApoA1 as an effective diagnosis biomarker for HCC could be drawn. Although our results showed that the majority lipids and apolipoproteins levels have apparently changed between HCC and normal benign groups, no significant differential expression patterns of lipids and apolipoproteins were observed between chronic liver

Table I Relationship Between Lipids and Apolipoproteins Level and Clinical Variables of HCC Patients

Variables		ApoA1		p value	ApoB		p value	ApoE	
		low	high		low	high		low	high
		n=282	n=189		n=345	n=126		n=253	n=218
Gender	Male	258	140	0	290	108	0.66	222	176
	Female	24	49		55	18		31	42
Age(years)	<55	152	87	0.09	182	57	0.15	130	109
	≥55	130	102		163	69		123	109
liver cirrhosis	absence	76	51	1	86	41	0.1	62	65
	present	206	138		259	85		191	153
Hepatitis history	absence	92	47	0.08	98	41	0.43	74	65
	present	190	142		247	85		179	153
BMI	<23.5	141	90	0.64	175	56	0.25	132	99
	≥23.5	141	99		170	70		121	119
GLU	<5.6	228	146	0.35	284	90	0.01	209	165
	≥5.6	54	43		61	36		44	53
APLB	<0.25	212	130	0.13	265	77	0	200	142
	≥0.25	70	59		80	49		53	76
ALT	≤50	224	146	0.57	270	100	0.8	210	160
	>50	58	43		75	26		43	58
TB	≤20	258	171	0.71	314	115	0.93	233	196
	>20	24	18		31	11		20	22
AFP	≤400	201	138	0.68	244	95	0.32	181	158
	>400	81	51		101	31		72	60
ALB	≤40	90	61	0.94	119	32	0.06	77	74
	>40	192	128		226	94		176	144
GGT	≤60	175	108	0.29	219	64	0.01	165	118
	>60	107	81		126	62		88	100
HbA1C	<6	232	154	0.83	298	88	<0.001	212	174
	≥6	50	35		47	38		41	44
HOMA2-IR	<26.9	262	175	0.9	318	119	0.4	237	200
	≥26.9	20	14		27	7		16	18
CRP	<3	198	144	0.15	267	75	<0.001	188	154
	≥3	84	45		78	51		65	64
Tumor size	≤5cm	184	133	0.27	237	80	0.32	180	137
	>5cm	98	56		108	46		73	81
Tumor number	Single	245	162	0.72	303	104	0.14	222	185
	Multiple	37	27		42	22		31	33
Tumor capsule	complete	180	123	0.78	219	84	0.52	160	143
	None	102	66		126	42		93	75
Vascular invasion	absence	198	152	0.01	260	90	0.39	190	160
	present	84	37		85	36		63	58
Edmondson grade	I-II	202	133	0.77	239	96	0.14	178	157
	III-IV	80	56		106	30		75	61

I

p value	TC		p value	TG		p value	HDL		p value	LDL		p value
	low	high		low	high		low	high		low	high	
	n=420	n=51		n=377	n=94		n=279	n=192		n=166	n=305	
0.04	355 65	43 8	0.97	316 61	82 12	0.41	222 57	176 16	<0.001	135 31	263 42	0.16
0.77	214 206	25 26	0.79	192 185	47 47	0.87	132 147	107 85	0.07	86 80	153 152	0.73
0.21	109 311	18 33	0.18	93 284	34 60	0.03	68 211	59 133	0.14	39 127	88 217	0.23
0.92	125 295	14 37	0.75	103 274	36 58	0.04	80 199	59 133	0.68	51 115	88 217	0.67
0.17	207 213	24 27	0.77	202 175	29 65	<0.001	149 130	82 110	0.03	87 79	144 161	0.29
0.07	338 82	36 15	0.14	302 75	72 22	0.48	224 55	150 42	0.64	141 25	233 72	0.03
0	313 107	29 22	0.01	296 81	46 48	<0.001	208 71	134 58	0.26	136 30	206 99	0.001
0.01	333 87	37 14	0.27	301 76	69 25	0.17	212 67	158 34	0.1	132 34	238 67	0.71
0.41	380 40	49 2	0.19	344 33	85 9	0.8	255 24	174 18	0.77	149 17	280 25	0.46
0.82	304 116	35 16	0.57	262 115	77 17	0.02	193 86	146 46	0.1	117 49	222 83	0.6
0.42	136 284	15 36	0.67	123 254	28 66	0.6	98 181	53 139	0.09	59 107	92 213	0.23
0.01	255 165	28 23	0.42	239 138	44 50	0	157 122	126 66	0.04	114 52	169 136	0.01
0.26	348 72	38 13	0.14	317 60	69 25	0.02	231 48	155 37	0.57	146 20	240 65	0.01
0.42	390 47	30 4	0.86	355 22	82 12	0.02	261 18	176 16	0.44	155 11	282 23	0.71
0.37	306 114	36 15	0.73	274 103	68 26	0.95	206 73	136 56	0.47	134 32	208 97	0.004
0.06	284 136	33 18	0.86	250 127	67 27	0.39	182 97	135 57	0.27	124 42	193 112	0.01
0.36	367 53	40 11	0.08	328 49	79 15	0.45	237 42	170 22	0.26	138 28	269 36	0.16
0.6	269 151	34 17	0.71	240 137	63 31	0.54	176 103	127 65	0.5	98 68	205 100	0.08
0.67	314 106	36 15	0.52	274 103	76 18	0.11	204 75	146 46	0.48	130 36	220 85	0.14
0.69	295 125	40 11	0.22	263 114	72 22	0.19	188 91	147 45	0.03	112 54	223 82	0.2

(Continued)

Table I (Continued).

Variables		ApoA1		p value	ApoB		p value	ApoE	
		low	high		low	high		low	high
		n=282	n=189		n=345	n=126		n=253	n=218
TNM stage	I	230	154	0.98	286	98	0.45	211	173
	II	28	18		31	15		25	21
	III	24	17		28	13		17	24

Abbreviations: BMI, body mass index; GLU, glucose; APLB, prealbumin; ALT, alanine aminotransferase; TB, total bilirubin; AFP, alpha-fetoprotein; ALB, prealbumin; GGT, glutamyl transpeptidase; HbA1C, hemoglobin A1C; CRP, C reactive protein; TC, total cholesterol; TG, triglycerides; HDL, high-density lipoprotein; LDL, low-density lipoprotein.

hepatitis and HCC in our study. Furthermore, the circulating ApoA1, HDL and LDL levels were strongly lower in liver cirrhosis group as compared to HCC group, and this

result was not contradictory with previous studies.^{10,13,24} A possible explanation for this is that the majority of previous studies included patients with liver cancer at

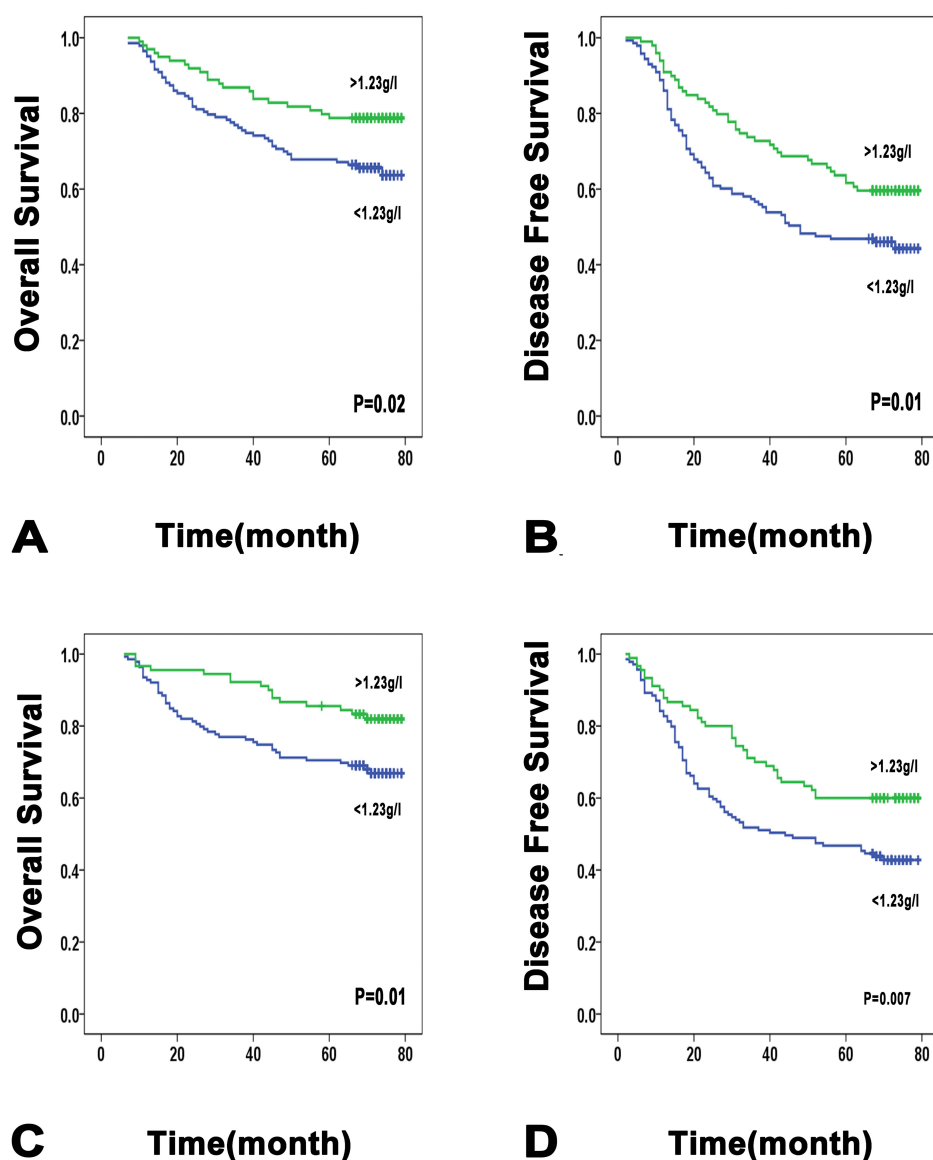


Figure 2 Low ApoA1 level is significantly associated with poorer patient survival. Low ApoA1 level is significantly associated with poorer overall survival (A) and disease-free survival (B), in a test cohort of 242 HCC patients. Low ApoA1 level is significantly associated with poorer overall survival (C) and recurrence-free survival (D), in a validation cohort of 229 HCC patients.

p value	TC		p value	TG		p value	HDL		p value	LDL		p value
	low	high		low	high		low	high		low	high	
	n=420	n=51		n=377	n=94		n=279	n=192		n=166	n=305	
0.26	346	38	0.39	308	76	0.4	222	162	0.39	133	251	0.44
	39	7		34	12		31	15		20	26	
	35	6		35	6		26	15		13	28	

more advanced stages, accompanied with more severe liver dysfunction, inevitably leading to a lower level of lipids and apolipoproteins compared with our results. Collectively, we considered that ApoA1 was not a sensitive or specific biomarker enough to separate HCC from chronic liver diseases. In addition, some data have

suggested ApoA1 could provide diagnostic utility to distinguish patients with bladder cancer from healthy controls, as well as gastric and breast cancer. The more important concern is that these results emphasize a fact that changes of lipid and apolipoprotein profiles may imply the relationship with the presence and/or risk of

Table 2 Univariate and Multivariate Analyses of Prognostic Factors in HCC in Training Cohort

Variables	OS			DFS		
	Univariate	Multivariate		Univariate	Multivariate	
	P	HR (95% CI)	P	P	HR (95% CI)	P
Gender	0.93			0.57		
Age(years)	0.46			0.08		
liver cirrhosis	0.59			0.45		
Hepatitis history	0.81			0.15		
BMI	0.18			0.11		
GLU	0.59			0.7		
APLB	0.08			0.12		
ALT	0.89			0.55		
TB	0.25			0.61		
AFP	0.002	1.687(1.028–2.771)	0.04	0.004		
ALB	0.56			0.71		
GGT	0.01			0.004		
CHOL	0.56			0.51		
TG	0.24			0.32		
HDL	0.36			0.57		
LDL	0.01	1.868(1.036–3.368)	0.04	0.045		
Tumor size	<0.001	2.216(1.379–3.561)	0.001	<0.001	1.974(1.363–2.862)	<0.001
Tumor number	0.08			0.09		
Tumor capsule	0.04			0.26		
Vascular invasion	<0.001	2.502(1.542–4.061)	<0.001	<0.001	1.997(1.336–2.984)	0.001
Edmondson grade	0.054			0.007	1.458(0.98–2.17)	0.06
TNM stage	0.003			0.001		
ApoA1	0.02	0.587(0.352–0.979)	0.04	0.01	0.607(0.413–0.893)	0.01
ApoB	0.36			0.83		
ApoE	0.18			0.39		

Note: Univariate analysis: Kaplan-Meier method; multivariate analysis: Cox proportional hazards regression model.

Abbreviations: BMI, body mass index; GLU, glucose; APLB, prealbumin; ALT, alanine aminotransferase; TB, total bilirubin; AFP, alpha-fetoprotein; ALB, prealbumin; GGT, glutamyl transpeptidase; HbA1C, hemoglobin A1C; CRP, C reactive protein; TC, total cholesterol; TG, triglycerides; HDL, high-density lipoprotein; LDL, low-density lipoprotein; OS, overall survival; DFS, disease free survival; HR, hazard ratio; CI, confidence interval.

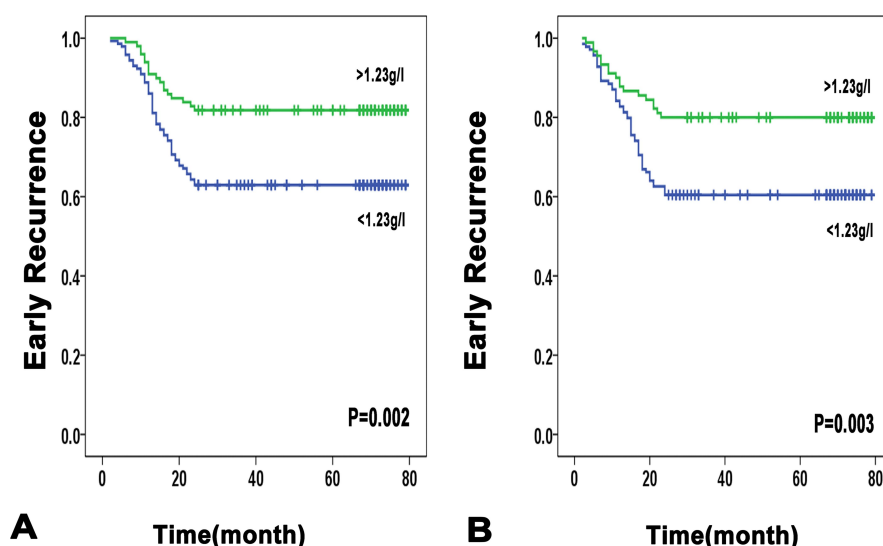


Figure 3 Early recurrence curves in the training and validation cohorts according to ApoA1 ≤ 1.23 g/l or ApoA1 > 1.23 g/l. (A) training cohort. (B) validation cohort.

cancer, although the underlying biological mechanisms are not fully understood.

The majority of HCC patients have an underlying chronic liver disease, therefore hepatic function is damaged obviously on these bases, which significantly influence lipid and apolipoprotein metabolism. Consequently, it has been suggested that plasma levels of lipids and apolipoproteins in HCC reflects on the hepatic cellular impairment status. We revealed that the majority of lipids and apolipoproteins were positively correlated with prealbumin and gamma-glutamyl transferase, two hepatic protein synthetic ability indices, and prompted that the pattern of changes in the lipid and apolipoprotein levels may be a good indicator of the hepatic protein synthetic ability and liver injury during the perioperative period after hepatectomy. A large number of studies have proved that liver injury parameters were closely related to poor prognosis in HCC,^{25,26} hence we hypothesize that circulating lipids and apolipoproteins could serve as indicators of prognosis after curative hepatectomy in routine clinical practice. In fact, the correlation of lipid and apolipoprotein levels in peripheral blood with the prognosis of HCC has been poorly investigated.²⁷ Our study has revealed that although most of the lipids and apolipoproteins were not significantly associated with overall survival and tumor recurrence in both training and validation cohorts, a lower serum ApoA1 level was a negative prognostic factor of OS and DFS in patients with HCC in two independent cohorts. Therefore, serum ApoA1 might be a powerful and noninvasive biomarker to predict HCC

prognosis for patients with curative surgery. Our results suggest that ApoA1 could also serve as an indicator of prognosis in patients with lower AFP concentration. So it may help surgeons to identify those surgical candidates at high risk of recurrence and poor prognosis before operation, and furthermore it would be a clinical monitoring indicator for patients with lower AFP concentration after operation since AFP is not feasible as a monitoring indicator, while ApoA1 is significantly correlated with the prognosis of patients of that sort.

Notably, the current study demonstrated no progressive relationship between ApoA1 expression and postoperative survival in patients with an AFP concentration of ≥ 400 μ g/L that is generally associated with advanced stage and tumor progression, suggesting that ApoA1 may be an efficient predictor of early prognosis status for patients. Various reports have suggested that patients with early recurrence generally have worse prognosis than those with late phase recurrence.^{28,29} Since the clinical outcome of patients who suffer from early recurrence is extremely dismal,³⁰ identifying patients at high risk for early recurrence may help improve the prognosis of this population by rational adjuvant treatment. Although some research has shown the relationship between apolipoprotein levels and the survival of HCC patients, the correlation with HCC early recurrence has never been explored.³¹ Therefore, we next investigated prognostic value of ApoA1 to identify its value in HCC early recurrence and we further demonstrated here that low ApoA1 was an independent prognostic factor of poor early recurrence on multivariate analysis in two cohorts. As we

Table 3 Univariate and Multivariate Analyses for Independent Variables Associated with HCC Early Recurrence

Variables	Early Recurrence (Training Cohort)			Early Recurrence (Validation Cohort)		
	Univariate	Multivariate		Univariate	Multivariate	
	P	HR (95% CI)	P	P	HR (95% CI)	P
Gender	0.45			0.005		
Age(years)	0.28			0.44		
liver cirrhosis	0.46			0.17		
Hepatitis history	0.45			0.18		
BMI	0.1			0.14		
GLU	0.78			0.11		
APLB	0.08			0.106		
ALT	0.87			0.01	1.747(1.026–2.975)	0.04
TB	0.87			0.41		
AFP	0.002			0.03		
ALB	0.67			0.7		
GGT	0.01			<0.001	1.663(1.004–2.752)	0.048
CHOL	0.47			0.98		
TG	0.4			0.57		
HDL	0.86			0.88		
LDL	0.18			0.22		
Tumor size	<0.001	2.869(1.761–4.673)	<0.001	<0.001	2.084(1.275–3.407)	0.003
Tumor number	0.04			0.15		
Tumor capsule	0.01			0.44		
Vascular invasion	<0.001	2.862(1.769–4.631)	<0.001	<0.001	1.897(1.159–3.106)	0.01
Edmondson grade	0.003			0.15		
TNM stage	<0.001			0.04		
ApoA1	0.002	0.51(0.297–0.875)	0.02	0.003	0.478(0.278–0.811)	0.008
ApoB	0.57			0.25		
ApoE	0.03	0.574(0.353–0.935)	0.03	0.87		

Abbreviations: BMI, body mass index; GLU, glucose; APLB, prealbumin; ALT, alanine aminotransferase; TB, total bilirubin; AFP, alpha-fetoprotein; ALB, prealbumin; GGT, glutamyl transpeptidase; HbA1C, hemoglobin A1C; CRP, C reactive protein; TC, total cholesterol; TG, triglycerides; HDL, high-density lipoprotein; LDL, low-density lipoprotein; HR, hazard ratio; CI, confidence interval.

know, HCCs larger than 5 cm always have a poor prognosis,^{32,33} and small HCCs less than 2 cm are always associated with a great prognosis, then we stratified patients into three subgroups according to tumor size. We observed a statistically significant difference in the curves for early HCC recurrence-free survival: patients with low ApoA1 had a higher recurrence rate in tumor size ranging from 2cm to 5cm subgroup. It is also worth noting that in AFP concentration of <400 µg/L and TNM stage I subgroups, Kaplan–Meier survival curves showed that patients with lower ApoA1 levels had poor early recurrence rate in both cohorts. Consequently, we consider that ApoA1 might be utilized to identify a certain potentially manageable portion of HCC patients at high risk of early recurrence who are good candidates to receive more intensive surveillance and aggressive treatment post-surgery, especially for those with early stage.

To date, the precise mechanisms by which serum lipids and apolipoproteins contribute to the initiation and/or progression of cancer are not completely understood. Dyslipidaemia are known to be associated with the induction of oxidative stress as well as chronic inflammatory response and is closely related to insulin resistance,^{34–36} all of which have certain relationships with tumorigenesis.^{37,38} In vitro studies have confirmed that in several prostate, colon and breast cancer cells, high levels of cholesterol-rich lipid rafts in the plasma membrane in order to enhance cholesterol anabolism by reducing expression of ABCA1 which effluxes cholesterol in these cells, and meet the increasing requirements for cell proliferation. In addition, HDL and ApoA1 have attracted much interest by playing protective roles in cancer suggested from several large clinical studies.^{39,40} Furthermore, in mouse tumor

models,⁴¹ ApoA1 not only prevented further development of the tumor but also led to tumor shrinkage. The anti-tumor effect of ApoA1 is profound and manifold, in large part by modulating the anti-tumor immune response. It promoted the accumulation of M1 anti-tumor phenotype macrophages, increased levels of tumor cell killing macrophages and recruited CD8T cells within the tumor microenvironment. But how ApoA1/HDL triggers these effects is not known and is currently under investigation. Notably, the current study demonstrated a progressive relationship between low serum ApoA1 levels and postoperative early recurrence and poor outcomes in HCC patients, illustrated that ApoA-1 might be a protective agent against liver cancer. Moreover, high density lipoprotein as a potential carrier for delivery of antitumoral drugs into hepatoma cells,⁴² and provision of human ApoA1 was therapeutic against established tumors, seems to supply a new treatment method in liver cancer.

There are some limitations to be considered in our study. Firstly, all participants enrolled with HCC experienced surgery. Since most patients who had accepted hepatic resection had well-compensated liver function, the serum lipids and apolipoproteins levels might not be significantly influenced by basic liver disease or HCC as compared to those with chronic liver diseases. This partly explained the phenomenon that no significant difference of lipids level was revealed between HCC and chronic liver diseases groups in our data. Secondly, the quantity of participants with chronic liver disease was relatively small compared to that of the HCC group, the power to detect a statistical difference might be weakened. Lastly, the present study was a retrospective single-centric study, further multicentric prospective studies are warranted to confirm our results.

In conclusion, the current study provided alterations in lipids and apolipoproteins patterns in patients with resectable HCC, chronic infection and benign liver disease. Among these factors, although ApoA1 was not suitable to be a diagnostic biomarker of HCC, it was confirmed as an independent prognosis factor for recurrence and survival in HCC, and it might discriminate poor prognosis in patients with early-stage HCC. Further trials are necessary to clarify the mechanisms underlying anti-tumor effects of ApoA1.

Acknowledgments

This work was in part supported by National Key Sci-Tech Special Project of China (Grant 2012ZX10002010-001/002), the National Natural Science Foundation of China

(Grant 81302102), and the Basic Research Programs of Science and Technology Commission Foundation of Shanghai (Grants 13JC1401800, XBR2013074, and 13CG04)

Author Contributions

All authors made a significant contribution to the work reported, whether that is in the conception, study design, execution, acquisition of data, analysis and interpretation, or in all these areas; took part in drafting, revising or critically reviewing the article; gave final approval of the version to be published; and have agreed on the journal to which the article has been submitted; and agree to be accountable for all aspects of the work.

Disclosure

The authors declare that they have no conflict of interest.

References

1. Torre LA, Bray F, Siegel RL, et al. Global cancer statistics, 2012. *CA Cancer J Clin*. 2015;65(2):87–108. doi:10.3322/caac.21262
2. Forner A, Llovet JM, Bruix J. Hepatocellular carcinoma. *Lancet*. 2012;379(9822):1245–1255. doi:10.1016/S0140-6736(11)61347-0
3. Portolani N, Coniglio A, Ghidoni S, et al. Early and late recurrence after liver resection for hepatocellular carcinoma: prognostic and therapeutic implications. *Ann Surg*. 2006;243(2):229–235. doi:10.1097/01.sla.0000197706.21803.a1
4. Chun JM, Kwon HJ, Sohn J, et al. after early recurrence in patients who underwent curative resection for hepatocellular carcinoma. *J Surg Oncol*. 2011;103(2):148–151. doi:10.1002/jso.21786
5. Tabuchi M, Kitayama J, Nagawa H. Hypertriglyceridemia is positively correlated with the development of colorectal tubular adenoma in Japanese men. *World J Gastroenterol*. 2006;12(8):1261–1264. doi:10.3748/wjg.v12.i8.1261
6. Ulmer H, Borena W, Rapp K, et al. Serum triglyceride concentrations and cancer risk in a large cohort study in Austria. *Br J Cancer*. 2009;101(7):1202–1206. doi:10.1038/sj.bjc.6605264
7. Van Duijnhoven FJ, Bueno-De-Mesquita HB, Calligaro M, et al. Blood lipid and lipoprotein concentrations and colorectal cancer risk in the European Prospective Investigation into Cancer and Nutrition. *Gut*. 2011;60(8):1094–1102. doi:10.1136/gut.2010.225011
8. Shi J, Zhu L, Liu S, et al. A meta-analysis of case-control studies on the combined effect of hepatitis B and C virus infections in causing hepatocellular carcinoma in China. *Br J Cancer*. 2005;92(3):607–612. doi:10.1038/sj.bjc.6602333
9. Fujii S, Koga S, Shono T, et al. Serum apoprotein A-I and A-II levels in liver diseases and cholestasis. *Clin Chim Acta*. 1981;115(3):321–331. doi:10.1016/0009-8981(81)90245-X
10. Hachem H, Favre G, Raynal G, et al. Serum apolipoproteins A-I, A-II and B in hepatic metastases. Comparison with other liver diseases: hepatomas and cirrhosis. *J Clin Chem Clin Biochem*. 1986;24(3):161–166.
11. Motta M, Giugno I, Ruello P, et al. Lipoprotein (a) behaviour in patients with hepatocellular carcinoma. *Minerva Med*. 2001;92(5):301–305.
12. Alsabti EA. Serum lipids in hepatoma. *Oncology*. 1979;36(1):11–14.
13. Ooi K, Shiraki K, Sakurai Y, et al. Clinical significance of abnormal lipoprotein patterns in liver diseases. *Int J Mol Med*. 2005;15(4):655–660.

14. Ahaneku JE, Taylor GO, Olubuyide IO, et al. Abnormal lipid and lipoprotein patterns in liver cirrhosis with and without hepatocellular carcinoma. *J Pak Med Assoc.* 1992;42(11):260–263.
15. Mustafa MG, Petersen JR, Ju H, et al. Biomarker discovery for early detection of hepatocellular carcinoma in hepatitis C-infected patients. *Mol Cell Proteomics.* 2013;12(12):3640–3652. doi:10.1074/mcp.M113.031252
16. Steel LF, ShumPERT D, Trotter M, et al. A strategy for the comparative analysis of serum proteomes for the discovery of biomarkers for hepatocellular carcinoma. *Proteomics.* 2003;3(5):601–609. doi:10.1002/pmic.200300399
17. Sun HC, Zhang W, Qin LX, et al. Positive serum hepatitis B e antigen is associated with higher risk of early recurrence and poor survival in patients after curative resection of hepatitis B-related hepatocellular carcinoma. *J Hepatol.* 2007;47(5):684–690. doi:10.1016/j.jhep.2007.06.019
18. Camp RL, Dolled-Filhart M, Rimm DL. X-tile: a new bio-informatics tool for biomarker assessment and outcome-based cut-point optimization. *Clin Cancer Res.* 2004;10(21):7252–7259. doi:10.1158/1078-0432.CCR-04-0713
19. Yamamoto Y, Ikoma H, Morimura R, et al. Optimal duration of the early and late recurrence of hepatocellular carcinoma after hepatectomy. *World J Gastroenterol.* 2015;21(4):1207–1215. doi:10.3748/wjg.v21.i4.1207
20. Cooper ME, Akdeniz A, Hardy KJ. Effects of liver transplantation and resection on lipid parameters: a longitudinal study. *Aust N Z J Surg.* 1996;66(11):743–746. doi:10.1111/j.1445-2197.1996.tb00734.x
21. Marrero JA, Feng Z, Wang Y, et al. Alpha-fetoprotein, des-gamma carboxyprothrombin, and lectin-bound alpha-fetoprotein in early hepatocellular carcinoma. *Gastroenterology.* 2009;137(1):110–118. doi:10.1053/j.gastro.2009.04.005
22. Tremosini S, Forner A, Boix L, et al. Prospective validation of an immunohistochemical panel (glypican 3, heat shock protein 70 and glutamine synthetase) in liver biopsies for diagnosis of very early hepatocellular carcinoma. *Gut.* 2012;61(10):1481–1487. doi:10.1136/gutjnl-2011-301862
23. Liu Y, Sogawa K, Sunaga M, et al. Increased concentrations of apo A-I and apo A-II fragments in the serum of patients with hepatocellular carcinoma by magnetic beads-assisted MALDI-TOF mass spectrometry. *Am J Clin Pathol.* 2014;141(1):52–61. doi:10.1309/AJCPBLFBNAP6N2UN
24. Cicognani C, Malavolti M, Morselli-Labate AM, et al. Serum lipid and lipoprotein patterns in patients with liver cirrhosis and chronic active hepatitis. *Arch Intern Med.* 1997;157(7):792–796. doi:10.1001/archinte.1997.00440280120012
25. Faloppi L, Scartozzi M, Bianconi M, et al. The role of LDH serum levels in predicting global outcome in HCC patients treated with sorafenib: implications for clinical management. *BMC Cancer.* 2014;14:110.
26. Scartozzi M, Faloppi L, Bianconi M, et al. The role of LDH serum levels in predicting global outcome in HCC patients undergoing TACE: implications for clinical management. *PLoS One.* 2012;7(3):e32653. doi:10.1371/journal.pone.0032653
27. Yan X, Yao M, Wen X, et al. Elevated apolipoprotein B predicts poor postsurgery prognosis in patients with hepatocellular carcinoma. *Oncotargets Ther.* 2019;12:1957–1964. doi:10.2147/OTT.S192631
28. Shimada M, Takenaka K, Gion T, et al. Prognosis of recurrent hepatocellular carcinoma: a 10-year surgical experience in Japan. *Gastroenterology.* 1996;111(3):720–726. doi:10.1053/gast.1996.v111.pm8780578
29. Poon RT, Fan ST, Lo CM, et al. Intrahepatic recurrence after curative resection of hepatocellular carcinoma: long-term results of treatment and prognostic factors. *Ann Surg.* 1999;229(2):216–222. doi:10.1097/0000658-199902000-00009
30. Poon RT, Fan ST, Ng IO, et al. Different risk factors and prognosis for early and late intrahepatic recurrence after resection of hepatocellular carcinoma. *Cancer.* 2000;89(3):500–507. doi:10.1002/1097-0142(20000801)89:3<500::AID-CNCR4>3.0.CO;2-O
31. Mao M, Wang X, Sheng H, et al. A novel score based on serum apolipoprotein A-I and C-reactive protein is a prognostic biomarker in hepatocellular carcinoma patients. *BMC Cancer.* 2018;18(1):1178. doi:10.1186/s12885-018-5028-8
32. Kim BK, Han KH, Park YN, et al. Prediction of microvascular invasion before curative resection of hepatocellular carcinoma. *J Surg Oncol.* 2008;97(3):246–252. doi:10.1002/jso.20953
33. Kaibori M, Ishizaki M, Matsui K, et al. Predictors of microvascular invasion before hepatectomy for hepatocellular carcinoma. *J Surg Oncol.* 2010;102(5):462–468. doi:10.1002/jso.21631
34. Ahotupa M, Suomela JP, Vuorimaa T, et al. Lipoprotein-specific transport of circulating lipid peroxides. *Ann Med.* 2010;42(7):521–529. doi:10.3109/07853890.2010.510932
35. Moustafa T, Fickert P, Magnes C, et al. Alterations in lipid metabolism mediate inflammation, fibrosis, and proliferation in a mouse model of chronic cholestatic liver injury. *Gastroenterology.* 2012;142(1):140–151. doi:10.1053/j.gastro.2011.09.051
36. Kobayashi Y, Kashima H, Wu RC, et al. Mevalonate pathway antagonist suppresses formation of serous tubal intraepithelial carcinoma and ovarian carcinoma in mouse models. *Clin Cancer Res.* 2015;21(20):4652–4662. doi:10.1158/1078-0432.CCR-14-3368
37. Freed-Pastor WA, Mizuno H, Zhao X, et al. Mutant p53 disrupts mammary tissue architecture via the mevalonate pathway. *Cell.* 2012;148(1–2):244–258. doi:10.1016/j.cell.2011.12.017
38. Noguti J, Andersen ML, Cirelli C, et al. Oxidative stress, cancer, and sleep deprivation: is there a logical link in this association? *Sleep Breath.* 2013;17(3):905–910. doi:10.1007/s11325-012-0797-9
39. Cao WM, Murao K, Imachi H, et al. A mutant high-density lipoprotein receptor inhibits proliferation of human breast cancer cells. *Cancer Res.* 2004;64(4):1515–1521. doi:10.1158/0008-5472.CAN-03-0675
40. Mooberry LK, Nair M, Paranjape S, et al. Receptor mediated uptake of paclitaxel from a synthetic high density lipoprotein nanocarrier. *J Drug Target.* 2010;18(1):53–58. doi:10.3109/10611860903156419
41. Zamanian-Daryoush M, Lindner D, Tallant TC, et al. The cardioprotective protein apolipoprotein A1 promotes potent anti-tumorigenic effects. *J Biol Chem.* 2013;288(29):21237–21252. doi:10.1074/jbc.M113.468967
42. Lou B, Liao XL, Wu MP, et al. High-density lipoprotein as a potential carrier for delivery of a lipophilic antitumoral drug into hepatoma cells. *World J Gastroenterol.* 2005;11(7):954–959. doi:10.3748/wjg.v11.i7.954

OncoTargets and Therapy**Dovepress****Publish your work in this journal**

OncoTargets and Therapy is an international, peer-reviewed, open access journal focusing on the pathological basis of all cancers, potential targets for therapy and treatment protocols employed to improve the management of cancer patients. The journal also focuses on the impact of management programs and new therapeutic

agents and protocols on patient perspectives such as quality of life, adherence and satisfaction. The manuscript management system is completely online and includes a very quick and fair peer-review system, which is all easy to use. Visit <http://www.dovepress.com/testimonials.php> to read real quotes from published authors.

Submit your manuscript here: <https://www.dovepress.com/oncotargets-and-therapy-journal>