

# CT-Guided $^{125}\text{I}$ Brachytherapy in the Treatment of Hepatocellular Carcinoma Refractory to Conventional Transarterial Chemoembolization: A Pilot Study

This article was published in the following Dove Press journal:  
*Cancer Management and Research*

Xinjian Xu<sup>1,\*</sup>  
Yiwen Ding<sup>1,\*</sup>  
Tianfan Pan<sup>1</sup>  
Feng Gao<sup>1</sup>  
Xiangzhong Huang<sup>1</sup>  
Qiulian Sun<sup>2</sup>

<sup>1</sup>Department of Interventional Radiology, Jiangyin People's Hospital, Jiang Yin City, Jiangsu Province, 214400, People's Republic of China; <sup>2</sup>Department of Radiology, Zhejiangtaizhou Hospital, Taizhou City, Zhejiang Province, 317000, People's Republic of China

\*These authors contributed equally to this work

**Purpose:** To investigate the efficacy and safety of CT-guided  $^{125}\text{I}$  brachytherapy in the treatment of hepatocellular carcinoma (HCC) refractory to conventional transarterial chemoembolization (TACE).

**Methods:** Nineteen patients with TACE-refractory HCC treated with CT-guided  $^{125}\text{I}$  brachytherapy between June 2017 and June 2020 at Jiangyin People's Hospital were enrolled in this study. In addition, we used the modified Response Evaluation Criteria in Solid Tumors (mRECIST) criteria to evaluate the treatment response after  $^{125}\text{I}$  brachytherapy.

**Results:** Twenty-one tumours were treated with CT-guided  $^{125}\text{I}$  brachytherapy in nineteen patients. Twelve tumours (57.1%) showed a complete response, and a partial response was observed in seven tumours (33.3%). The six-month objective response rate was 90.5% (19/21). The adverse effects of CT-guided  $^{125}\text{I}$  brachytherapy were tolerable.

**Conclusion:** Our preliminary clinical experience demonstrated that CT-guided  $^{125}\text{I}$  brachytherapy was effective and well tolerated for the treatment of TACE-refractory HCC, suggesting that CT-guided  $^{125}\text{I}$  brachytherapy has the potential to become an effective alternative treatment for TACE-refractory HCC.

**Keywords:**  $^{125}\text{I}$  brachytherapy, TACE, refractory, hepatocellular carcinoma

## Introduction

Hepatocellular carcinoma (HCC) is one of the most common malignant tumours worldwide.<sup>1</sup> Recently, the China National Cancer Center reported that HCC is the fourth most common malignancy and the second leading cause of cancer-related deaths in China.<sup>2</sup> Moreover, China accounts for half of new HCC cases as well as HCC-related deaths worldwide.<sup>3,4</sup>

Transarterial chemoembolization (TACE) is the current standard therapy for unresectable intermediate-stage HCC.<sup>5,6</sup> However, some HCC patients receiving repetitive TACE showed poor response to this treatment, such as poor tumour response, new lesions, extrahepatic metastasis, vascular invasion, or continued elevation of tumour markers. The Japan Society of Hepatology (JSH) and the Liver Cancer Study Group of Japan (LCSGJ) defined this phenomenon as "refractoriness or failure to TACE".<sup>7</sup>

For TACE-refractory HCC, continued TACE therapy would result in increased side effects, deteriorated liver function, or even reduced survival time.<sup>8,9</sup> Therefore, switching the treatment modality for TACE-refractory HCC is necessary. Although sorafenib was

Correspondence: Xiangzhong Huang;  
Qiulian Sun  
Email hxzdoc@163.com;  
sql947435865@163.com

recommended for the treatment of intermediate-stage HCC patients refractory to TACE,<sup>10</sup> the main drawbacks of sorafenib, including a relatively low response rate,<sup>11,12</sup> a common occurrence of drug resistance,<sup>13</sup> intolerable adverse reactions<sup>14</sup> (eg, severe hand-foot syndrome, severe diarrhoea, and intractable nausea or vomiting) and high drug expense,<sup>15</sup> may limit its application in the treatment of TACE-refractory HCC. Consequently, more alternative treatments with high effectiveness and safety for TACE-refractory HCC continue to be required.

The data from several studies suggested that external beam radiotherapy could achieve good efficacy (> 85% local control) in treating HCC.<sup>16</sup> However, external beam radiotherapy was associated with a relatively high occurrence rate (5–50%) of radiation-induced liver disease (RILD) related to the high dose of radiation.<sup>17,18</sup> Iodine-125 (<sup>125</sup>I) is a radioisotope that emits low energy  $\gamma$ -rays and has a half-life of 60 days. The radiation diameter of radioactive <sup>125</sup>I seeds for tissue is 1.7 cm. Theoretically, <sup>125</sup>I brachytherapy could induce tumour cell apoptosis and spare the surrounding nontumour tissues, thus maximizing the antitumour effect and minimizing the side effects.<sup>19</sup> Previous studies showed that <sup>125</sup>I brachytherapy yielded good clinical efficacy and safety in patients with hepatic malignant tumours.<sup>20–24</sup> However, evidence regarding <sup>125</sup>I brachytherapy for TACE-refractory HCC is still lacking. Therefore, we conducted CT-guided <sup>125</sup>I brachytherapy on seventeen patients with TACE-refractory HCC and evaluated the efficacy and safety of this treatment in this study.

## Materials and Methods

### Patients Refractory to Conventional TACE

Between June 2017 and June 2020, 246 patients underwent TACE at Jiangyin People's Hospital. Of those patients, nineteen consecutive patients with TACE-refractory HCC treated with CT-guided <sup>125</sup>I brachytherapy were included in this study. A total of twenty-one tumours refractory to conventional TACE in the nineteen patients were analysed. TACE-refractory HCC (Figures 1A–D and 2A–D) was defined as those with more than two consecutive incomplete necrosis (lipiodol deposition <50%) (Figures 1E, F and 2E, F) on CT and/or MRI which were employed to evaluate tumour response to TACE.<sup>7</sup> The tumour response

evaluation with CT and MRI was performed at 1 to 2 months after conventional TACE.

### The Procedure of the Preoperative Plan and CT-Guided <sup>125</sup>I Brachytherapy

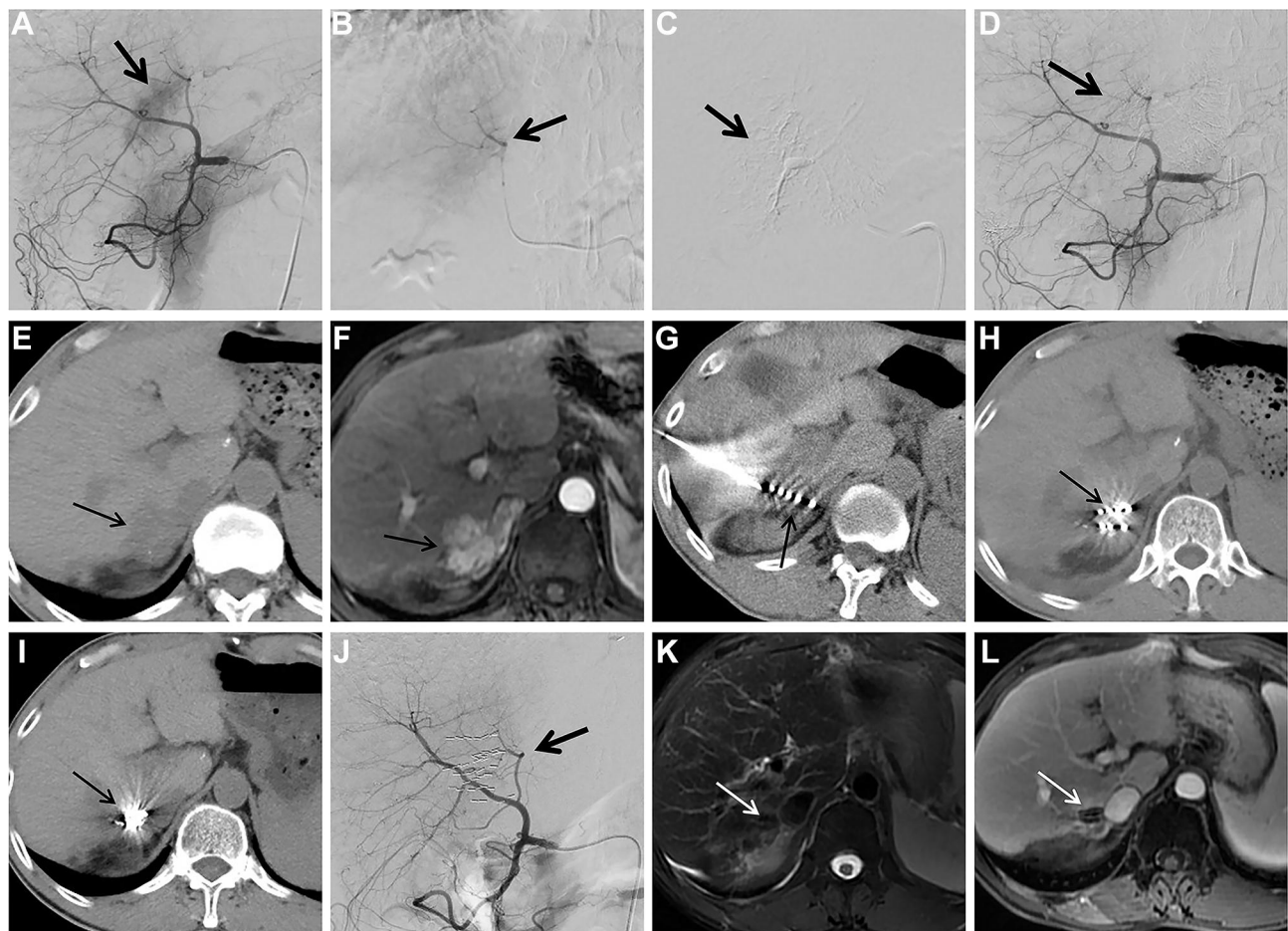
Abdominal CT images were obtained using spiral CT (PHILIPS Brilliance CT 64, Philips Healthcare, Netherlands) <1 week before the procedure. The DICOM format images were then imported into the Prowess treatment planning system (TPS) (Prowess Panther TPS, Chico, USA). The planning target volume of each tumour was delineated in every slice. A dose-volume histogram was generated by the TPS with a prescribed matched peripheral dose (MPD) of 130–160 Gy. The number of <sup>125</sup>I seeds and isodose curves were calculated. The dose distribution of the target tumour and risk organs was demonstrated. The implantation position and the puncture approach were also planned based on the location of the target tumour.<sup>24</sup> Following the planned positions and the puncture approach, an 18G puncture needle was inserted into the targeted tumour under CT guidance, and <sup>125</sup>I seeds (activity, 0.6mCi; manufacturer, Shanghai Xinke Pharmaceutical Co., Ltd, China) were implanted into tumour tissue in compliance with the plan (Figures 1G and 2G). Repeat CT was performed to check for possible complications. The image was imported into the TPS to verify the dose distribution (Figure 3A and B). Postoperative antibiotics and haemostatics were routinely administered for three days.

### Assessment of the Therapeutic Effects

The antitumour effect was evaluated by comparing non-enhanced CT and dynamic enhanced MRI imaging before treatment to imaging 1, 2, 4, and 6 months after the CT-guided <sup>125</sup>I brachytherapy procedure (Figures 1H, I, K, L and 2H–L), selective angiography was also performed if necessary (Figure 1J). The Modified Response Evaluation Criteria in Solid Tumors (mRECIST)<sup>25</sup> criteria were employed to evaluate the treatment response of the target tumour (see the [Appendix](#)).

### Statistical Analysis

In this study, normally distributed data are represented by the mean  $\pm$  SD; otherwise, data are represented by the median. Categorical variables are represented by frequencies. Statistical analyses were conducted with SPSS version 18.0 software (SPSS Inc., Chicago, IL, USA).



**Figure 1** Images from case 15. Male, 54 years of age, HCC. The lesion is located at S7 with a diameter of 3.3cm.

**Notes:** (A) Selective angiography of the common hepatic artery during the second cTACE procedure shows tumor staining (arrow); (B and C) superselective embolization of the tumor feeding artery (arrow); (D) selective angiography of the common hepatic artery shows tumor staining disappears after embolization (arrow); (E) follow-up CT scan 2 months after thesecond cTACE shows little lipiodol accumulation within the HCC lesion (arrow); (F) follow-up contrast-enhanced MRI 2 months after thesecond cTACE shows persistent contrast enhancement of the HCC lesion (arrow); (G)  $^{125}\text{I}$  brachytherapy for TACE-refractory HCC is performed under the guidance of CT (arrow); (H) CT 1 month after  $^{125}\text{I}$  brachytherapy shows HCC lesion is stable (arrow); (I) CT 6 months after  $^{125}\text{I}$  brachytherapy shows remarkable particles aggregation (arrow); (J) selective angiography of the common hepatic artery 6 months after  $^{125}\text{I}$  brachytherapy shows no visible tumor staining (arrow); (K and L) T2WI and contrast-enhanced MRI 6 months after  $^{125}\text{I}$  brachytherapy show complete response with 100% necrosis of the TACE-refractory HCC lesion (arrow).

**Abbreviations:** HCC, hepatocellular carcinoma; cTACE, conventional transarterial chemoembolization; CT, computed tomography; MRI, magnetic resonance imaging; T2WI, T2-weighted imaging; TACE, transarterial chemoembolization.

## Results

### Patients and Tumour Characteristics

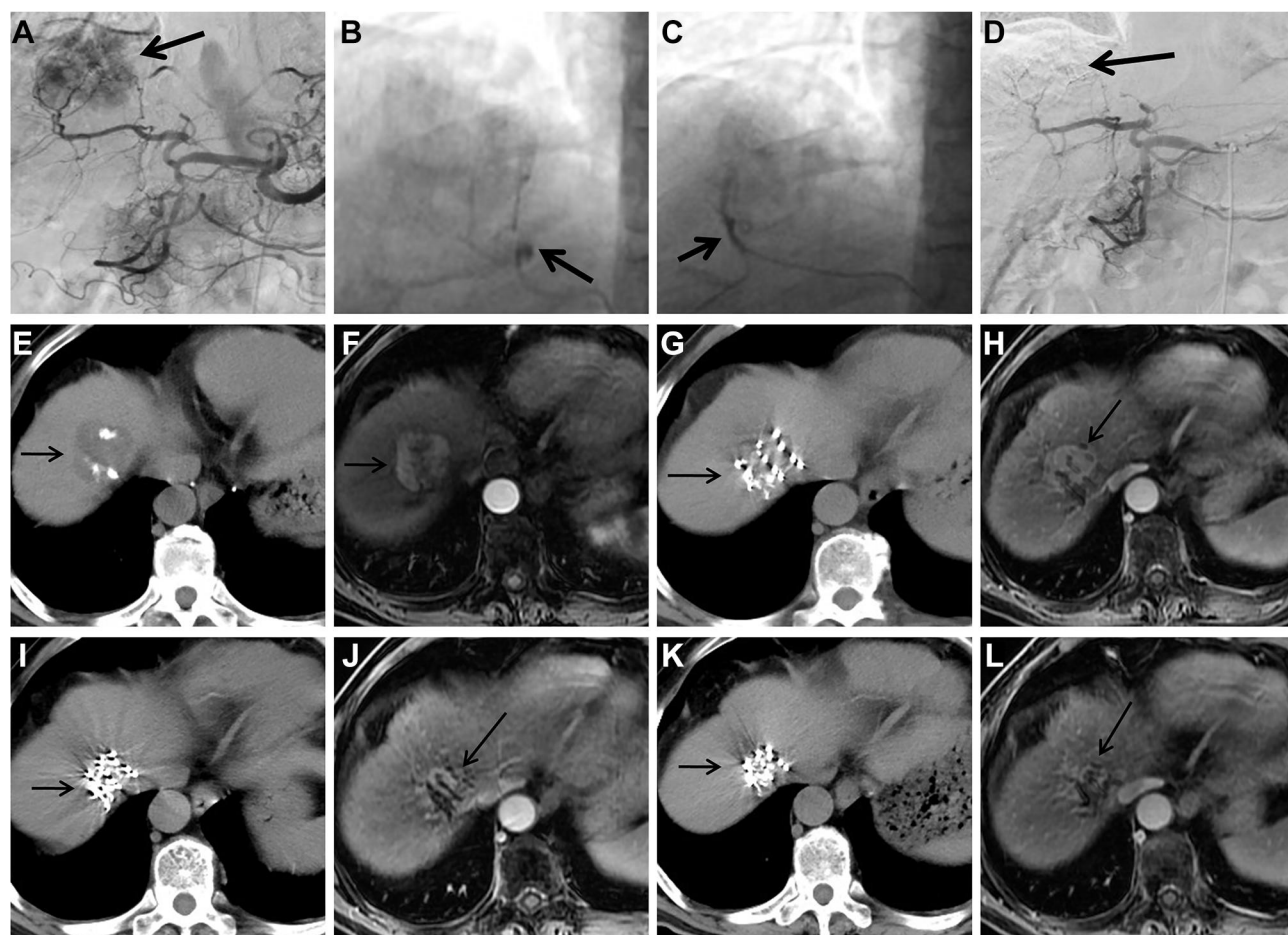
The baseline characteristics of the patients with TACE-refractory HCC are shown in Table 1. There were eighteen males and one female, aged 43 to 80 years, with a median age of 69 years. All nineteen patients had hepatitis B virus infection. Three patients were at stage A, and sixteen patients were at stage B based on the Barcelona Clinic for Liver Cancer (BCLC) staging classification. The mean tumour size was 4.3 cm before  $^{125}\text{I}$  brachytherapy. One tumour was of the infiltrating type, two were multinodular, and the others were of the nodular type. A median of 4 rounds (range, 2 to 8 times) of conventional TACE was performed in these patients before CT-guided  $^{125}\text{I}$  brachytherapy.

### Six-Month Tumour Response After CT-Guided $^{125}\text{I}$ Brachytherapy

Six months after CT-guided  $^{125}\text{I}$  brachytherapy, CR was observed in twelve tumours (57.1%), PR was observed in seven tumours (33.3%), and SD was observed in two tumours (9.5%) (Table 2) according to the mRECIST criteria. The six-month objective response rate was 90.5% (19/21), and the six-month survival rate was 100% (21/21).

### CT-Guided $^{125}\text{I}$ Brachytherapy-Related Complications

No serious intraoperative complications, such as massive bleeding, intestinal fistula, intestinal bleeding, bile fistula, or infection, occurred. CT-guided  $^{125}\text{I}$  brachytherapy-



**Figure 2** Images from case 12. Male, 72 years of age, HCC. The lesion is located at S8 with a diameter of 4.0 cm.

**Notes:** (A) Selective angiography of the celiac trunk during the fourth cTACE procedure shows tumor staining (arrow); (B and C) selection of feeding arteries and embolization (arrow); (D) selective angiography of the common hepatic artery shows tumor staining disappears after embolization (arrow); (E) follow-up CT scan 2 months after the fourth cTACE shows a small amount of lipidol accumulation within the HCC lesion (arrow); (F) follow-up contrast-enhanced MRI 2 months after the fourth cTACE shows persistent contrast enhancement of the HCC lesion (arrow); (G)  $^{125}\text{I}$  brachytherapy for TACE-refractory HCC is performed under the guidance of CT (arrow); (H) follow-up contrast-enhanced MRI 1 month after  $^{125}\text{I}$  brachytherapy shows HCC lesion is stable (arrow); (I) follow-up CT 4 months after  $^{125}\text{I}$  brachytherapy shows particles aggregation (arrow); (J) follow-up contrast-enhanced MRI 4 months after  $^{125}\text{I}$  brachytherapy shows partial response of the HCC lesion (arrow); (K) follow-up CT 6 months after  $^{125}\text{I}$  brachytherapy shows marked particles aggregation (arrow); (L) follow-up contrast-enhanced MRI 6 months after  $^{125}\text{I}$  brachytherapy shows partial response of the TACE-refractory HCC lesion (arrow).  
**Abbreviations:** HCC, hepatocellular carcinoma; cTACE, conventional transarterial chemoembolization; CT, computed tomography; MRI, magnetic resonance imaging; TACE, transarterial chemoembolization.

related complications included slight pneumothorax and slight perihepatic haemorrhage. Pneumothorax occurred in 3 cases, and perihepatic haemorrhage occurred in one case (Table 2). All these minor complications were tolerable, and they were managed conservatively with a favourable outcome.

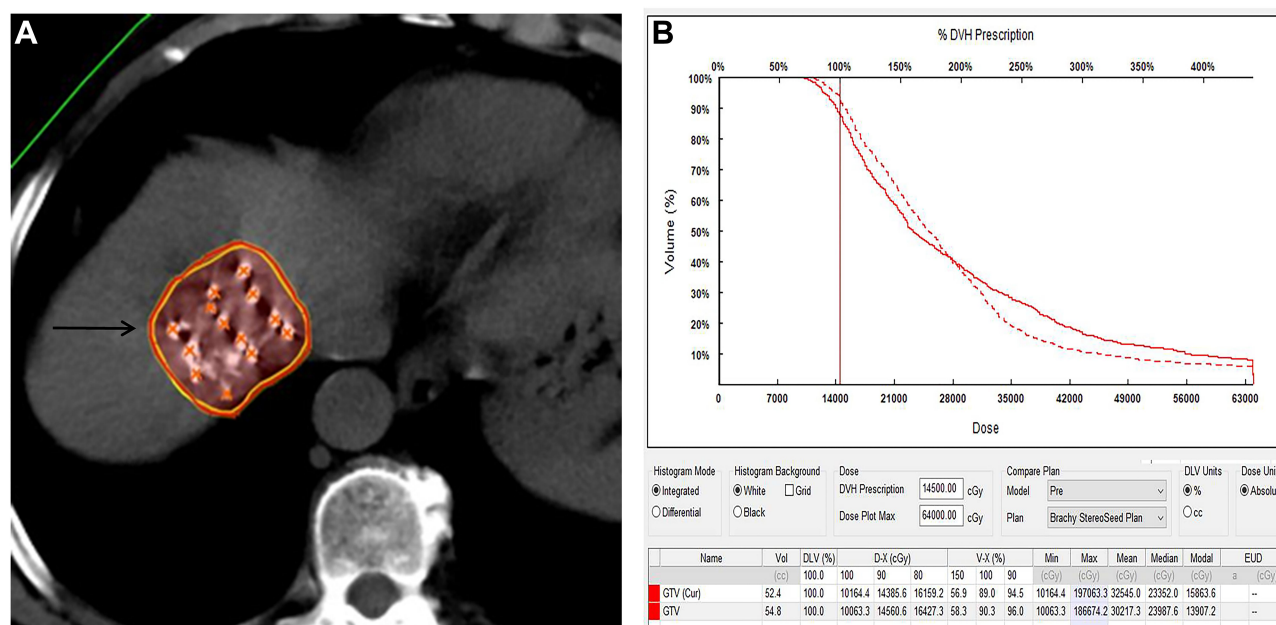
## Clinical Courses After CT-Guided $^{125}\text{I}$ Brachytherapy

The clinical courses after CT-guided  $^{125}\text{I}$  brachytherapy are listed in Table 3. Four patients died, and fifteen patients survived to the end of the follow-up. Seven

patients eventually suffered disease progression, and the median time to progression was 264 days. After  $^{125}\text{I}$  brachytherapy, additional treatments such as TACE, TIPSS, or sorafenib were given as necessary.

## Discussion

TACE has been recommended as the standard therapy for unresectable intermediate and advanced liver cancer. However, for patients with TACE-refractory HCC, continuous TACE damages liver function and even shortens the life of the patients; therefore, effective treatment for TACE-refractory HCC is necessary.



**Figure 3** Dose verification images from case 12. Male, 72 years of age, HCC. The lesion is located at S8 with a diameter of 4.0 cm.

**Notes:** (A) Postoperative verified prescription isodose curve (145 Gy) (yellow line) is in good agreement with the clinical target volume (red line) (arrow); (B) relatively good agreement between preoperative DVH (dotted line) and postoperative DVH (solid line) is observed.

**Abbreviations:** HCC, hepatocellular carcinoma; DVH, dose volume histogram.

Currently, the exact mechanism of TACE-refractory HCC is still not clear, and several possible explanations may be responsible for the occurrence of TACE-refractory HCC. First, HCC has a dual blood supply. The blood supply to the central area of the HCC is mainly from the hepatic artery, while the blood supply to the peripheral area is mainly from the portal vein. TACE could stop the blood supply to the central area of the tumour, thus leading to ischemic necrosis. However, the blood supply to the marginal area of the tumour is less affected by TACE, so residual cancer cells could lead to HCC recurrence.<sup>9</sup> Second, lipiodol deposited in the tumour after TACE may be washed out by the blood flow or engulfed by Kupffer cells in the liver,<sup>26</sup> which may affect the tumour response. Third, the acquisition of resistance to chemotherapeutic drugs after repeated TACE could also lead to TACE refractoriness.<sup>27</sup> Fourth, the tumour tissue was in a state of ischemia and hypoxia after repeated TACE, which could upregulate VEGF expression and promote angiogenesis and revascularization, leading to tumour recurrence and metastasis.<sup>28,29</sup> In addition, the HGF/c-Met signalling pathway plays an important role in tumour cell infiltration and metastasis, ischemia, and hypoxia after repeated TACE and can upregulate the expression of c-Met in HCC, resulting in tumour resistance and metastasis.<sup>30</sup>

HCC is sensitive to radiation, and previous studies have demonstrated that external beam radiotherapy with an effective dose (>60 Gy) could achieve a complete response in HCC.<sup>31,32</sup> However, the maximum tolerated dose of normal liver tissue was 30 Gy,<sup>33</sup> therefore, external beam radiotherapy for HCC was limited by radiation-induced liver injury. The <sup>125</sup>I seeds (diameter 0.8 mm, length 4.5 mm) could emit continuous low-dose  $\gamma$ -rays (27.4–35.5 keV) with an effective tissue penetration of 17 mm. It was previously believed that  $\gamma$ -rays could cause unrepairable damage to cancer cells by damaging DNA (DNA double-strand breaks, single-strand breaks, and free radical damage).<sup>23</sup> Recently, <sup>125</sup>I brachytherapy was used to treat HCC with promising therapeutic effects.

Compared with external beam radiotherapy, <sup>125</sup>I brachytherapy has several physical and biological advantages. The effective tissue penetration of <sup>125</sup>I seeds was approximately 1.7 cm, and its effective radiation was mainly focused on the targeted tumour area, with minimal effects on normal liver tissue.<sup>21</sup> In one session of external beam radiotherapy, only cancer cells in the sensitive phase (M phase and G2 phase) of the tumour cell cycle could be easily killed, whereas cancer cells in the non-sensitive phase (S phase) of the tumour cell cycle had resistance to radiation. However, the  $\gamma$ -rays released by <sup>125</sup>I seeds could continue irradiating tumours for up to 200 days.

**Table 1** Baseline Characteristics of HCC Patients Refractory to Conventional TACE

Characteristics	Value
Sex	
Men	18
Woman	1
Median age, year	69(43–80)
Etiology	
HBV infection	19
Other factor	0
BCLC staging classification	
A	3
B	16
C	0
Median AFP, ng/mL	228.2(3.5–3526)
Mean size of tumour, cm	4.3(1.5–11.9)
Total no. of tumour	21
Target tumour location	
Left lobe	
S2	1
S3	3
S4	4
Right lobe	
S5	1
S6	2
S7	3
S8	4
S5–6	1
S5–8	2
No. of previous TACE, median	4

**Note:** Data are presented as number or median (range).

**Abbreviations:** AFP, alpha-fetoprotein; BCLC staging classification, Barcelona Clinic Liver Cancer staging classification; HBV, hepatitis B virus; TACE, transarterial chemoembolization.

During this period, the ratio of cells in the sensitive and non-sensitive phases of the cell cycle became redistributed, thereby increasing the total radiation dose of tumour cells in the sensitive phase, which would help to improve the killing effect of radiation on tumour cells.<sup>19</sup> Moreover, although the dose rate of brachytherapy with <sup>125</sup>I seeds was lower than that of external beam radiotherapy, continuous low-dose  $\gamma$ -rays could cause significant damage to cancer cells because of the cumulative effects of radiation. It was reported that the accumulated dose within the local tissue during the half-life of <sup>125</sup>I could reach up to 120–160 Gy, which could cause devastating damage to the tumour in the target area.<sup>34</sup> In the present study, the

matched peripheral dose of the patients who received brachytherapy was 130–160 Gy, which may play an important role in the effective treatment of TACE-refractory HCC.

In the present study, for CT-guided <sup>125</sup>I brachytherapy in treating TACE-refractory HCC, the six-month objective response rate was 90.5% (19/21), and the six-month survival rate was 100% (21/21), which suggested that <sup>125</sup>I brachytherapy had satisfactory mid-term effects in controlling TACE-refractory HCC. These promising results may be explained by several possible reasons. The cancer cells in the marginal area of the HCC mainly supplied by the portal vein were still active after TACE, whereas the  $\gamma$ -rays released by <sup>125</sup>I seeds could kill these cancer cells and achieve an effective tumour response. In addition, patients with TACE-refractory HCC underwent multiple TACE procedures; therefore, liver cancer cells were often in a hypoxic state. Recent evidence showed that <sup>125</sup>I seeds had a low dose rate and low oxygen enhancement ratio, which could partially overcome the resistance of hypoxic tumour cells to radiation and increase the sensitivity of  $\gamma$ -rays to hypoxic tumour cells.<sup>35</sup> This effect may also be a possible mechanism by which <sup>125</sup>I seeds treat TACE-refractory HCC.

Moreover, hypoxia could induce increased expression of VEGF in HCC, and VEGF was a specific growth factor for vascular endothelial cells and could promote tumour angiogenesis. Vascular endothelial cells have active proliferation capacity and high sensitivity to radiation.<sup>36</sup> Several studies reported that the radiation released by <sup>125</sup>I seeds could damage vascular endothelial cells and inhibit the expression of VEGF in tumour tissue, thus inhibiting tumour neovascularization to prevent tumour growth.<sup>37</sup> We speculated this may be another possible explanation for <sup>125</sup>I seeds to treat TACE-refractory HCC.

During the procedure of CT-guided <sup>125</sup>I brachytherapy, the vital blood vessels and organs around the tumour could be clearly displayed under CT guidance, which could help clinicians better control the direction and depth of the implanted needle and reduce the risk of damage to the intestines, important blood vessels or the bile duct. In the present study, no major intraoperative complications, such as intestinal fistula, intestinal bleeding, massive bleeding, bile fistula, or infection, occurred; however, some minor complications occurred. One patient had slight perihepatic haemorrhage during the procedure, which was associated with damage to intrahepatic small blood vessels. Slight pneumothorax occurred in 3 patients during the procedure, which was

**Table 2** Response to Conventional TACE and CT-Guided <sup>125</sup>I Brachytherapy

Patient No.	Location	Total Sessions of TACE	Last Conventional TACE			CT-Guided <sup>125</sup> I Brachytherapy					
			Size (cm)	Tumour Shape on CT	Lipiodol Accumulation on Follow-Up CT After cTACE, %	Size (cm)	Response by mRECIST	Pre-RT AFP	Post-RT AFP	No. of <sup>125</sup> I Seeds	Complications
1	S8	2	5.4	Nodular	30%	4.5	PR	239.64	65.48	50	None
2	S4	5	5.5	Nodular	50%	5.1	CR	351.97	3.8	20	None
3	S5-6	3	5.9	Nodular	40%	5.7	CR	3.5	5.2	80	None
4	S7	6	6.8	Nodular	10%	7.0	SD	687.1	256.5	80	None
5	S5-8	5	8.2	Nodular	40%	8.0	PR	352.6	1520	54	None
6	S4 S5	3	2.8 1.5	MultiNodular	0% <5%	2.6 1.5	CR CR	6.4	4.3	25 15	None
7	S8	4	3.9	Nodular	30-40%	3.1	PR	228.2	29.8	40	Perihepatic haemorrhage
8	S5-8	2	9.5	Nodular	30-40%	9.0	PR	1210	6.2	60	None
9	S7	8	2.8	Nodular	20-30%	2.5	CR	227.6	9.2	40	Pneumothorax
10	S3 S4	6	1.8 2.0	MultiNodular	10% <5%	1.8 1.9	CR CR	3.7	2.8	12 18	None
11	S3	4	4.4	Nodular	40%	3.5	CR	336.6	919.9	50	None
12	S8	4	4.0	Nodular	5-10%	3.7	PR	15.7	11.1	50	Pneumothorax
13	S3	3	1.6	Nodular	0%	1.6	PR	11.2	8.5	20	None
14	S4	5	11.9	Infiltrating	20-30%	11.6	SD	5.8	31.5	90	None
15	S7	2	3.3	Nodular	5%	3.2	CR	341.1	147.6	45	None
16	S6	3	1.5	Nodular	30-40%	1.8	CR	6.2	3.2	20	None
17	S2	2	1.9	Nodular	5-10%	2.0	CR	4.2	6	22	None
18	S8	2	4.6	Nodular	40%	4.2	PR	26.2	6.6	60	Pneumothorax
19	S6	6	1.8	Nodular	30-40%	1.7	CR	229.7	182.2	20	None

**Table 3** Clinical Courses After CT-Guided  $^{125}\text{I}$  Brachytherapy

Patient No.	Overall Response	Survival Status	Overall Survival, Day	Time to Progression, Day	Additional Treatment
1	PD	Dead	328	212	TACE×1
2	PD	Dead	707	305	None
3	PD	Alive	822	623	TACE×1
4	PD	Dead	291	61	Sorafenib
5	PD	Dead	151	92	TACE×2
6	CR	Alive	623	NE	None
7	PR	Alive	602	NE	TACE×2
8	PR	Alive	588	NE	TACE×2
9	CR	Alive	511	NE	None
10	CR	Alive	500	NE	None
11	PD	Alive	479	358	TACE×1, TIPSS×1
12	PR	Alive	460	NE	TACE×1
13	PR	Alive	441	NE	TACE×1
14	PD	Alive	350	264	None
15	CR	Alive	403	NE	None
16	CR	Alive	339	NE	None
17	CR	Alive	327	NE	None
18	PR	Alive	297	NE	None
19	CR	Alive	262	NE	None

**Abbreviations:** CR, complete response; PD, progressive disease; PR, partial response; TACE, transarterial chemoembolization; TIPSS, transjugular intrahepatic portosystemic stent-shunt; NE, not evaluable.

caused by the puncture path through the chest cavity. These minor complications were all relieved after conservative treatment. These findings in the present study were similar to those reported by previous researchers,<sup>19,38</sup> suggesting that CT-guided  $^{125}\text{I}$  brachytherapy was a safe and tolerable treatment for TACE-refractory HCC.

The present study had several limitations. First, the relatively small sample size and the relatively short follow-up enabled us to draw only preliminary conclusions concerning the potential value of CT-guided  $^{125}\text{I}$  brachytherapy for TACE-refractory HCC. Further studies with larger sample sizes and longer follow-up periods are needed to confirm these preliminary findings. Second, although the results were encouraging, the results of this study were compromised by its retrospective nature and single-arm design. Third, the half-life of iodine-125 was 60 days, and as time extended,

the radioactivity of iodine-125 gradually decreased, which may gradually diminish the inhibition of tumour cells. Therefore, to obtain better efficacy for TACE-refractory HCC, repeated CT-guided  $^{125}\text{I}$  brachytherapy or other combined therapies may be necessary. Fourth, because of the relatively short application time of  $^{125}\text{I}$  brachytherapy in the treatment of HCC and HCC having its own tumour characteristics, there is currently no standard treatment for  $^{125}\text{I}$  brachytherapy in treating HCC, and further research and exploration are still needed.

In conclusion, our preliminary practice demonstrated that CT-guided  $^{125}\text{I}$  brachytherapy was effective and well tolerated for the treatment of TACE-refractory HCC, suggesting that CT-guided  $^{125}\text{I}$  brachytherapy has the potential to become an effective alternative treatment for TACE-refractory HCC.

## Research Involving Human Participants and/or Animals

All procedures performed in studies involving human participants were in accordance with the ethical standards of the Jiangying Hospital Research committee and with the 1964 Helsinki declaration and its later amendments or comparable ethical standards. This study was approved by the Medical Ethics Committee of Jiangyin People's Hospital.

## Informed Consent

This study was a retrospective study. During the follow-up, some patients have died, we were unable to obtain the informed consent of these patients. Therefore, the patient's informed consent was not required by the ethics committee of our hospital. Patient confidentiality was maintained by anonymizing patient data to remove any identifying information.

## Acknowledgments

No funding was received for this study. Xinjian Xu and Yiwen Ding are co-first authors for this study. Thanks are due to Yiyang Huang, Yiwen Ding, Tianfan Pan, Qiulian Sun and Feng Gao for assistance with the study and to Xiangzhong Huang for valuable discussion.

## Disclosure

The authors declare that they have no conflicts of interest.

## References

1. Ferlay J, Colombet M, Soerjomataram I, et al. Estimating the global cancer incidence and mortality in 2018: GLOBOCAN sources and methods. *Int J Cancer*. 2019;144(8):1941–1953. doi:10.1002/ijc.31937
2. Zheng RS, Sun KX, Zhang SW, et al. Report of cancer epidemiology in China, 2015. *Chin J Oncol*. 2019;41(1):19–28.
3. Zhou M, Wang H, Zeng X, et al. Mortality, morbidity, and risk factors in China and its provinces, 1990–2017: a systematic analysis for the Global Burden of Disease Study 2017. *Lancet*. 2019;394(10204):1145–1158. doi:10.1016/S0140-6736(19)30427-1
4. Bray F, Ferlay J, Soerjomataram I, et al. Global cancer statistics 2018: GLOBOCAN estimates of incidence and mortality worldwide for 36 cancers in 185 countries: global cancer statistics 2018. *CA Cancer J Clin*. 2018;68(6):394–424. doi:10.3322/caac.21492
5. Ikeda M, Kudo M, Aikata H, et al. Transarterial chemoembolization with miriplatin vs. epirubicin for unresectable hepatocellular carcinoma: a Phase III randomized trial. *J Gastroenterol*. 2018;53(2):281–290. doi:10.1007/s00535-017-1374-6
6. Yang JD, Heimbach JK. New advances in the diagnosis and management of hepatocellular carcinoma. *BMJ*. 2020;371:m3544. doi:10.1136/bmj.m3544
7. Kudo M, Matsui O, Izumi N, et al. Transarterial chemoembolization failure/refractoriness: JSH-LCSGJ criteria 2014 update. *Oncology*. 2014;87(Suppl 1):22–31. doi:10.1159/000368142
8. Ernst O, Sergeant G, Mizrahi D, et al. Treatment of hepatocellular carcinoma by transcatheter arterial chemoembolization: comparison of planned periodic chemoembolization and chemoembolization based on tumour response. *Am J Roentgenol*. 1999;172(1):59–64. doi:10.2214/ajr.172.1.9888740
9. Yu CX, Teng GJ. Transarterial chemoembolization refractory: current research progress. *J Interv Radiol*. 2017;26(12):1063–1067.
10. Kokudo N, Hasegawa K, Akahane M, et al. Evidence-based clinical practice guidelines for hepatocellular carcinoma: the Japan society of hepatology 2013 update (3rd JSH-HCC guidelines). *Hepatol Res*. 2015;45(2):123–127. doi:10.1111/hepr.12464
11. Cheng AL, Kang YK, Chen ZD, et al. Efficacy and safety of sorafenib in patients in the Asia-Pacific region with advanced hepatocellular carcinoma: a phase III randomised, double-blind, placebo-controlled trial. *Lancet Oncol*. 2009;10(1):25–34. doi:10.1016/S1470-2045(08)70285-7
12. Llovet JM, Ricci S, Mazzaferro V, et al. Sorafenib in advanced hepatocellular carcinoma. *N Engl J Med*. 2008;359(4):378–390. doi:10.1056/NEJMoa0708857
13. Mendez-Blanco C, Fondevila F, García-Palomo A, et al. Sorafenib resistance in hepatocarcinoma: role of hypoxia-inducible factors. *Exp Mol Med*. 2018;50(10):1–9. doi:10.1038/s12276-018-0159-1
14. Rimassa L, Danesi R, Pressiani T, et al. Management of adverse events associated with tyrosine kinase inhibitors: improving outcomes for patients with hepatocellular carcinoma. *Cancer Treat Rev*. 2019;77:20–28. doi:10.1016/j.ctrv.2019.05.004
15. Hill A, Gotham D, Fortunak J, et al. Target prices for mass production of tyrosine kinase inhibitors for global cancer treatment. *BMJ Open*. 2016;6(1):e009586. doi:10.1136/bmjopen-2015-009586
16. Bae SH, Park HC, Lim DH, et al. Salvage treatment with hypofractionated radiotherapy in patients with recurrent small hepatocellular carcinoma. *Int J Radiat Oncol Biol Phys*. 2012;82(4):e603–607. doi:10.1016/j.ijrobp.2011.09.053
17. Dawson LA, Normolle D, Balter JM, et al. Analysis of radiation-induced liver disease using the Lyman NTCP model. *Int J Radiat Oncol Biol Phys*. 2002;53(4):810–821. doi:10.1016/S0360-3016(02)02846-8
18. Liang SX, Jiang GL, Zhu XD, et al. Radiation-induced liver disease: risk factors and liver irradiation tolerance. *Oncol Prog*. 2006;4(4):308–313.
19. Zheng JP, Shao GL, Luo J, et al. CT-guided <sup>125</sup>I seeds interstitial implantation for the refractory liver cancers ineffective to commonly used therapies. *J Interv Radiol*. 2015;24(3):260–264.
20. Lv J, Cao XF, Zhu B. (125)I radioactive seeds implantation therapy for hepatocellular carcinoma. *Gastroenterol Res*. 2009;2(3):141–147. doi:10.4021/gr2009.05.1289
21. Luo KY, Zheng JH, Li B, et al. Clinical application of iodine-125 seeds for hepatic carcinoma. *J Hepatobiliary Surg*. 2004;16(1):29–31.
22. Ricke J, Wust P, Stohlmann A, et al. CT-guided interstitial brachytherapy of liver malignancies alone or in combination with thermal ablation: Phase I-II results of a novel technique. *Int J Radiat Oncol Biol Phys*. 2004;58(5):1496–1505. doi:10.1016/j.ijrobp.2003.09.024
23. Chen L, Zheng CS. Application of 125I particle implantation combined with other therapies in treating liver cancers of different stages. *J Interv Radiol*. 2019;28(9):910–913.
24. Song Z, Ye J, Wang Y, et al. Computed tomography-guided iodine-125 brachytherapy for unresectable hepatocellular carcinoma. *J Cancer Res Ther*. 2019;15(7):1553–1560. doi:10.4103/jcrt.JCRT\_629\_19
25. Lencioni R, Llovet JM. Modified RECIST (mRECIST) assessment for hepatocellular carcinoma. *Semin Liver Dis*. 2010;30(1):52–60. doi:10.1055/s-0030-1247132

26. Idée JM, Guiu B. Use of lipiodol as a drug-delivery system for transcatheter arterial chemoembolization of hepatocellular carcinoma: a review. *Crit Rev Oncol Hematol*. 2013;88(3):530–549. doi:10.1016/j.critrevonc.2013.07.003
27. Tak E, Lee S, Lee J, et al. Human carbonyl reductase 1 upregulated by hypoxia renders resistance to apoptosis in hepatocellular carcinoma cells. *J Hepatol*. 2011;54(2):328–339. doi:10.1016/j.jhep.2010.06.045
28. Li X, Feng GS, Zheng CS, et al. Expression of plasma vascular endothelial growth factor in patients with hepatocellular carcinoma and effect of transcatheter arterial chemoembolization therapy on plasma vascular endothelial growth factor level. *World J Gastroenterol*. 2004;10(19):2878–2882. doi:10.3748/wjg.v10.i19.2878
29. Wang B, Xu H, Gao ZQ, et al. Increased expression of vascular endothelial growth factor in hepatocellular carcinoma after transcatheter arterial chemoembolization. *Acta Radiol*. 2008;49(5):523–529. doi:10.1080/02841850801958890
30. Kajihara J, Tomimaru Y, Eguchi H, et al. The clinical impact of transcatheter arterial chemoembolization (TACE)-induced c-met upregulation on TACE refractoriness in hepatocellular carcinoma. *Dig Dis Sci*. 2016;61(6):1572–1581. doi:10.1007/s10620-015-4018-9
31. Zeng ZC, Tang ZY, Fan J, et al. A comparison of chemoembolization combination with and without radiotherapy for unresectable hepatocellular carcinoma. *Cancer J*. 2004;10(5):307–316. doi:10.1097/00130404-200409000-00008
32. Zeng ZC, Tang ZY, Fan J, et al. Consideration of role of radiotherapy for lymph node metastases in patients with HCC: retrospective analysis for prognostic factors from 125 patients. *Int J Radiat Oncol Biol Phys*. 2005;63(4):1067–1076. doi:10.1016/j.ijrobp.2005.03.058
33. Xu ZY, Liang SX, Zhu J, et al. Prediction of radiation-induced liver disease by Lyman normal-tissue complication probability model in three-dimensional conformal radiation therapy for primary liver carcinoma. *Int J Radiat Oncol Biol Phys*. 2006;65(1):189–195. doi:10.1016/j.ijrobp.2005.11.034
34. Cao GW, Du MM, Cui XJ, et al. Efficacy of TACE combined with <sup>125</sup>I radioactive particle implantation in the treatment of paracardiac hepatic carcinoma. *Shandong Med*. 2017;57(10):55–57.
35. Lu X, Zeng GB, Lin LQ, et al. Transcatheter hepatic arterial oily chemoembolization combined with brightness mode guided <sup>125</sup>I seeds implantation for huge-type hepatoma. *Chin Arch Gen Surg*. 2014;8(2):125–129.
36. Li WS, Liu FK, Chen ZH, et al. Changes of angiogenesis in rectal cancer patients after preoperative radiotherapy. *Chin J Gen Surg*. 2004;19(6):331–333.
37. Tong WS, Pan JH, Qiu XL, et al. Influence of TACE combined with radioactive particle interstitial radiotherapy on malignant biological indexes in patients with primary hepatocellular carcinoma. *Pract J Cancer*. 2018;33(3):416–418.
38. Guo Q, Li Y, Yan YM, et al. Efficacy of TACE combined with <sup>125</sup>I radioactive particle implantation in the treatment of hepatic carcinoma. *J Med Imaging*. 2012;22(7):1130–1132.

## Cancer Management and Research

Dovepress

### Publish your work in this journal

Cancer Management and Research is an international, peer-reviewed open access journal focusing on cancer research and the optimal use of preventative and integrated treatment interventions to achieve improved outcomes, enhanced survival and quality of life for the cancer patient.

The manuscript management system is completely online and includes a very quick and fair peer-review system, which is all easy to use. Visit <http://www.dovepress.com/testimonials.php> to read real quotes from published authors.

Submit your manuscript here: <https://www.dovepress.com/cancer-management-and-research-journal>