

# Prognostic Significance of Serum PD-L1 Level in Patients with Locally Advanced or Metastatic Esophageal Squamous Cell Carcinoma Treated with Combination Cytotoxic Chemotherapy

Rong Fu<sup>1</sup>  
Chuan-Qing Jing<sup>1</sup>  
Xiu-Rong Li<sup>2</sup>  
Zhao-Feng Tan<sup>2</sup>  
Hui-Jie Li<sup>2</sup> 

<sup>1</sup>Clinical Department of Integrated Traditional Chinese and Western Medicine, The First Clinical Medical College of Shandong University of Traditional Chinese Medicine, Jinan, People's Republic of China; <sup>2</sup>Affiliated Hospital of Shandong University of Traditional Chinese Medicine, Jinan, People's Republic of China

**Background:** There are no useful biomarkers for the clinical outcome of advanced esophageal squamous cell carcinoma (ESCC). In this study, we aimed to investigate the prognostic value of soluble PD-L1 (sPD-L1) in serum of patients with locally advanced or metastatic ESCC who received cytotoxic chemotherapy as first-line treatment.

**Materials and Methods:** This study evaluated the expression pattern of PD-L1 by immunohistochemistry and sPD-L1 concentration, and correlation with clinicopathological factors and overall survival (OS) in 190 patients with ESCC.

**Results:** sPD-L1 concentration was highly expressed in ESCC, especially in female patients. Patients with a high sPD-L1 level ( $\geq 0.63$  ng/mL) had a shorter OS than those with a low sPD-L1 level ( $< 0.63$  ng/mL). In a multivariate analysis, high sPD-L1 concentration remained an independent prognostic factor of OS after adjustment for possible confounders. However, tissue PD-L1 expression level was non-prognostic in this study.

**Conclusion:** There was no significant correlation between serum sPD-L1 concentration and tissue PD-L1 expression level. sPD-L1 concentration before treatment could be an effective and convenient biomarker of prognosis in patients with locally advanced or metastatic ESCC treated with combination cytotoxic chemotherapy.

**Keywords:** esophageal squamous cell carcinoma, PD-L1, soluble PD-L1, prognosis, clinical outcome, chemotherapy

## Introduction

Esophageal cancer is the sixth most prevalent cancer worldwide. Global burden of esophageal cancer mostly involves esophageal squamous cell carcinoma (ESCC), and the greatest burden of ESCC occurs in China.<sup>1,2</sup> Although the incidence and mortality of ESCC gradually declined during the last three decades, the dismal prognosis of locally advanced or metastatic ESCC is still threatening the public health in China.<sup>3</sup>

ESCC is usually fatal and has a poor 5-year survival (less than 30% in China).<sup>4</sup> Such poor survival reflects the fact that ESCC is often unresectable due to advanced stage or metastasis at the time of diagnosis. Systemic chemotherapy has been established as the standard treatment for locally advanced or metastatic ESCC.<sup>5</sup> Docetaxel plus nedaplatin-based combination cytotoxic chemotherapy is currently a commonly used first-line regimen.<sup>6</sup> However, the outcome varies significantly

Correspondence: Hui-Jie Li  
Email 2008lihuijie@163.com

Received: 25 March 2021  
Accepted: 19 May 2021  
Published: 21 June 2021



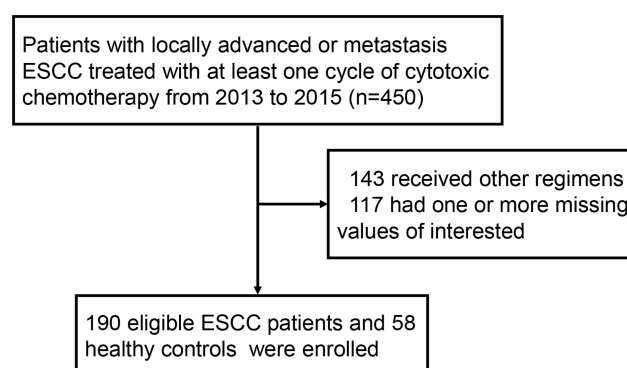
among individuals with unresectable ESCC who receive first-line chemotherapy. Therefore, clinicians need an effective biomarker of individual prognosis for reliable patient stratification.<sup>7</sup>

The programmed cell death ligand 1 (PD-L1)/programmed cell death receptor 1 (PD-1) pathway has been considered a promising target for cancer treatment based on its significant role in tumor immunity.<sup>8</sup> Several studies have shown PD-L1 expression level as an indicator of outcome in several malignancies.<sup>9</sup> It is known that PD-L1 localizes to the cell surface of tumor and immune cells, and recent studies have found the existence of soluble PD-L1 (sPD-L1) released from PD-L1 positive cells in human serum.<sup>10,11</sup> Previous research has shown that functional serum sPD-L1 also has PD-1 binding capacity.<sup>12</sup> To the best of our knowledge, although sPD-L1 is a promising biomarker, its clinical significance and comparison of the clinical value between the tissue and serum levels have not been reported in patients with ESCC. The purpose of this study was to evaluate the prognostic significance of sPD-L1 in patients with ESCC treated with combination cytotoxic chemotherapy.

## Materials and Methods

### Study Design and Patient Characteristics

We recruited patients who had histologically proven unresectable, locally advanced or recurrent/metastatic ESCC and had not received prior systemic therapies. Patients with locally advanced or metastatic ESCC who had received at least one cycle of first-line chemotherapy from January 2015 to October 2017 were identified from the computerized patient database of Affiliated Hospital of Shandong University of Traditional Chinese Medicine. The process of selection is shown in [Figure 1](#). The patients were included based on the availability of tissue biopsy specimens and serum samples with complete clinical information. We excluded patients in whom one or more clinicopathological variables of interest were unavailable. Forty-three patients who lost follow-up in the study were also excluded from study. Eventually, 190 patients with locally advanced or metastatic ESCC were enrolled in this study. The following associated data were collected: age at diagnosis, gender, body mass index (BMI), Eastern Cooperative Oncology Group performance score (ECOG performance score), tumor location, radiotherapy, subsequent chemotherapy record, and other initial laboratory values of interest. In



**Figure 1** Flowchart: Selection of the study population.

addition, we also included 58 healthy volunteers as a control cohort, whose detailed demographic information and laboratory values are described in [Supplementary Table 1](#). All experimental procedures were conducted in accordance with the Declaration of Affiliated Hospital of Shandong University of Traditional Chinese Medicine, and written informed consent was obtained from each patient.

### Measurement of Serum sPD-L1 Levels

Blood samples were collected by venipuncture from healthy volunteers and from ESCC patients within one week before initiation of combination chemotherapy. Samples were centrifuged at 2000 g for 10 min, then divided and stored at  $-80^{\circ}\text{C}$  until analysis. Serum sPD-L1 concentrations were determined using enzyme-linked immunosorbent assay kits for human PD-L1 (E-16346; Heguo, Shanghai, China). Serum samples (100  $\mu\text{L}$ ) were incubated in duplicate in PD-L1 antibody-coated microtiter plates. After incubation at  $37^{\circ}\text{C}$  for 2 hours, the liquid was removed from each well, and detection reagent A working solution was then added. After incubation at  $37^{\circ}\text{C}$  for 1 hour and subsequent washing, detection reagent B working solution was added, followed by incubation of samples at  $37^{\circ}\text{C}$  for 30 min. The solution was discarded, and after subsequent washing, substrate solution was added. Color development was stopped after 10 min at  $37^{\circ}\text{C}$  in the dark, and the intensity was immediately read at 450 nm. Measurements were performed in duplicate, and mean values were used for data presentation.

### Hematologic Markers

We also evaluated the blood parameters at baseline, prior to the first-line chemotherapy. Namely, the absolute

neutrophil count, absolute lymphocyte count, platelet count, albumin (ALB) level, C-reactive protein (CRP) level, globulin (GLB) level, and lactate dehydrogenase (LDH) level were collected from electronic medical database. The (neutrophil–lymphocyte ratio) NLR was calculated as the neutrophil count divided by the lymphocyte count, while the (platelet–lymphocyte ratio) PLR was calculated as the platelet count divided by the lymphocyte count.

## Staining of Tissue PD-L1

Immunohistochemical (IHC) analysis of PD-L1 on 4  $\mu$ m paraffin-embedded archived ESCC tissue biopsy specimens was performed in accordance with the standard protocol using commercial antibody. After deparaffinization and dehydration, the sections were placed in 10 mM sodium citrate buffer (pH=6.0) and autoclaved at 121°C for 10 min, and then incubated in normal goat serum (KL-D1418; KALANG, Zhengzhou, China) for 30 min to block non-specific antibody-binding sites. Each section was then incubated for 10 min at room temperature with an anti-PD-L1 rabbit monoclonal antibody (ab228415; Abcam, Shanghai, China) diluted 1:500 in phosphate-buffered saline containing 1% bovine serum albumin. Phosphate-buffered saline was used for negative controls. Visualization was performed by Envision Flex kit (DAKO, Glostrup, Denmark). The slides were counterstained with hematoxylin. Each section was observed at magnification of 10 $\times$  and 20 $\times$ . Expression levels of PD-L1 were defined as 1 (weak), 2 (relatively weak), 3 (relatively strong), or 4 (strong). All the samples were blindly examined by two pathologists (RZ.L. and L. Y.), and discussion using multi-head microscope was used to resolve discrepancies. The tumor samples were divided into a PD-L1-low group (staining score: 1–2) and PD-L1-high group (staining score: 3–4).

## Outcome Assessment

All patients were followed up in 1-month intervals during the first year after first-line chemotherapy, and subsequently at 2-month intervals for the second year, 6-month intervals for the third year, and annually for the fourth year. Overall survival (OS) was defined as the interval between the date of initial treatment and the date of death from any cause or the last follow-up.

## Statistical Analysis

Categorical data was analyzed using Fisher's exact test or the  $\chi^2$  test. Continuous data were compared between the

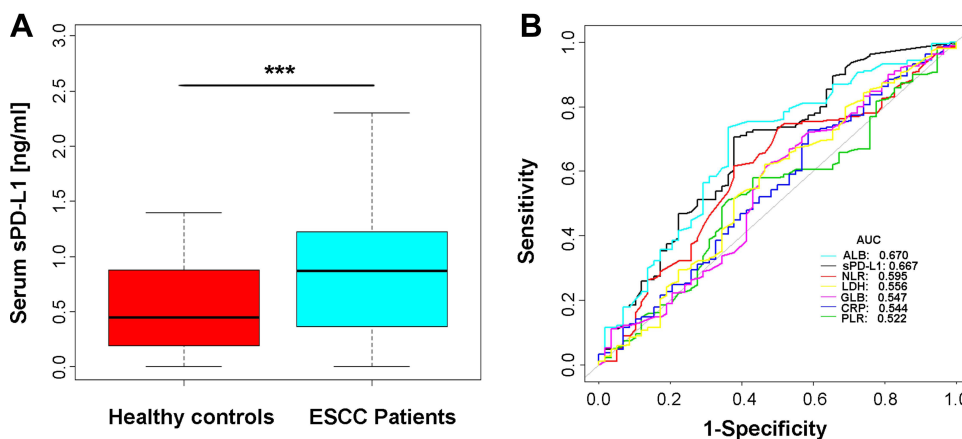
groups using Mann–Whitney *U*-test. Box-plot graphics displayed a statistical summary of the median, quartiles, and ranges. The optimal cut-off value of sPD-L1 was determined using X-tile software (<http://www.tissuearray.org/rimmlab>) and by the minimal P-value approach, as shown in the [Supplementary Figure 1](#). The same method was used for other hematologic markers (NLR, PLR, CRP, ALB, GLB, and LDH). The cut-off values of sPD-L1, NLR, PLR, CRP, ALB, GLB, and LDH in ESCC cohort to separate OS were 0.63 ng/mL, 6.6, 145, 5.21 mg/L, 40.0 g/L, 25.7 g/L, and 212 U/L, respectively. Hazard ratios (HRs) were obtained using the cumulative survival function and were reported with corresponding 95% confidence intervals (95% CI). Univariate Cox regression was constructed and factors with *p* value <0.1 in univariate survival analysis were introduced into multivariate analysis performed by the Cox proportional-hazards model using the forward procedure based on likelihood ratio for variable selection. A *p* value <0.05 was considered statistically significant. All analyses were performed using Empower (R) ([www.empowerstats.com](http://www.empowerstats.com), XY Solutions, inc. Boston MA).

## Results

### Serum sPD-L1 is Elevated in Patients with Locally Advanced or Metastatic ESCC

We examined the serum sPD-L1 level in pre-chemotherapy serum samples from 190 patients with ESCC and 58 healthy controls. We showed that sPD-L1 levels in ESCC patients were significantly elevated compared with healthy controls ([Figure 2A](#)). The detailed sPD-L1 testing information is shown in [Supplementary Table 1](#). Receiver operating characteristic curve (ROC) analysis for discrimination between patients with locally advanced or metastatic ESCC and healthy volunteers revealed an area under the ROC curve (AUC) of 0.667 for sPD-L1, which was only slightly inferior to ALB (AUCALB=0.670). Other hematologic markers showed an inferior AUC for the discrimination between ESCC patients and healthy controls (AUCNLR=0.595, AUCLDH=0.556, AUCGLB=0.547, AUCCRP=0.544, AUCPLR=0.522) ([Figure 2B](#)).

Based on the optimal cut-off level of sPD-L1 (0.63 ng/mL), 190 patients with advanced ESCC were stratified into the low (*n*=57) and high (*n*=133) sPD-L1 groups. Patients' characteristics are summarized in [Table 1](#). Interestingly, sPD-L1 level significantly correlated with gender (*p*<0.001) and GLB level (*p*=0.003)



**Figure 2** sPD-L1 concentration in healthy controls and ESCC patients. (A) sPD-L1 concentration was highly elevated in ESCC patients (*U*-test,  $p < 0.001$ ). (B) ROC analysis of sPD-L1 and other hematologic markers between ESCC patients and healthy controls.

**Note:** \*\*\* $p < 0.001$  was considered significant in *U*-test.

in ESCC patients, but not with any other variables examined. Subsequently, we examined the sPD-L1 level in the male and female parts of the cohort. We found no significant difference between patients with unresectable ESCC and healthy controls in the male cohort ( $p = 0.45$ ), but highly significant difference in the female cohort ( $p < 0.001$ ). Beyond that, in the female cohort, sPD-L1 level had a better discrimination ability between ESCC and healthy cohort ( $AUC_{sPD-L1-Female} = 0.758$ ) than in the male cohort ( $AUC_{sPD-L1-Male} = 0.554$ ) (Figure 3).

## PD-L1 Expression in Locally Advanced or Metastatic ESCC

To evaluate the tissue expression pattern of PD-L1 in ESCC, we performed IHC analysis of PD-L1 and quantified the staining as described in the Material and Methods section. Consistent with previous reports for other types of cancers, the IHC staining signal of PD-L1 was mainly distributed in the cellular membrane, but the cytoplasmic and nuclear localization of PD-L1 were also observed in some specimens. The staining intensity of PD-L1 was scored on a scale from 1 to 4 (Figure 4). According to the IHC staining results, 86 (45.3%) ESCC patients were classified into the PD-L1-Low group (score 1 or 2) and 104 (54.7%) ESCC patients into the PD-L1-High group (score 3 or 4). Correlations of tissue PD-L1 expression level with other patients' characteristics are shown in [Supplementary Table 2](#). We found no variables correlating with tissue PD-L1 expression level ( $p > 0.05$ ).

## Correlation Between Tissue PD-L1 Expression and Serum sPD-L1 Levels

According to the IHC staining and serum Elisa results, we subsequently evaluated the correlation between tissue PD-L1 and serum sPD-L1 levels in locally advanced or metastatic ESCC patients. There was no tendency to elevated sPD-L1 level in ESCC patients with high tissue PD-L1 expression compared with those with low expression level (Figure 5 and Table 2).

## Survival Analysis of sPD-L1 and PD-L1

Among 190 patients, there were 111 deaths during a median follow-up time of 13 months (range: 3–38 months), where the one-third-year OS was 70.0% and 9.8%, respectively.

Firstly, we observed that patients' survival time highly correlated with serum sPD-L1 concentration ( $p < 0.001$ , Figure 6A). However, the mean OS in different PD-L1 expression groups (scoring 1, 2, 3 or 4) was 14.5, 15.3, 14.7, and 13.9 months, respectively, indicating no significant difference in OS between different PD-L1 expression groups ( $p = 0.803$ , Figure 6B). Next, Kaplan–Meier curve analysis revealed significantly impaired OS in patients with locally advanced or metastatic ESCC with sPD-L1 serum concentration above the cut-off value of 0.63 ng/mL (Figure 6C). Median OS of sPD-L1-high patients was lower than in patients with low sPD-L1 level (12 months vs 21 months,  $p < 0.001$ ). However, we did not observe strongly impaired OS between ESCC patients with low and high tissue PD-L1 expression levels ( $p = 0.89$ , Figure 6D). Median OS of low or high PD-L1 expression patients was 14 and 13 months, respectively ( $p = 0.311$ ).

**Table I** Clinicopathological and Treatment Characteristics of ESCC Patients, Grouped Based on Serum sPD-L1 Level (Low vs High)

Factors	Total		Low sPD-L1 Group		High sPD-L1 Group		p
	N = 190	(%)	N = 57	(30%)	N = 133	(70%)	
Age							0.296
<68 *	91	47.9	24	42.1	67	50.4	
≥68	99	52.1	33	58.9	66	49.6	
Gender							<0.001
Male	87	45.8	48	84.2	39	29.3	
Female	103	54.2	9	15.8	94	70.7	
BMI (Kg/m <sup>2</sup> )							0.970
<25	147	77.4	44	77.2	103	77.4	
≥25	43	22.6	13	22.8	30	22.6	
Tumor location							0.454
Upper	27	14.2	5	8.8	22	16.5	
Middle	83	43.7	27	47.4	56	42.1	
Lower	63	33.2	21	36.8	42	31.6	
Overlapping	17	8.9	4	7.0	13	9.8	
ECOG PS							0.823
0–1	81	42.6	25	43.7	56	42.1	
≥2	109	57.4	32	56.1	77	57.9	
Grade							0.093
Well	6	3.2	0	0	6	4.5	
Moderately	92	48.4	33	57.9	59	44.4	
Poorly	92	48.4	24	42.1	68	51.3	
T classification							0.168
T2	35	18.4	11	19.3	24	18.0	
T3	90	47.4	32	56.1	58	43.6	
T4	65	34.2	14	24.6	51	38.4	
LN metastasis							0.457
Absent	34	17.9	12	21.0	22	16.5	
Present	156	82.1	45	79.0	111	83.5	
Distant metastasis							0.336
Absent (III)	110	57.9	36	63.2	74	55.6	
Present (III)	80	42.1	21	36.8	59	44.4	
Radiotherapy							0.747
Absent	154	81.1	47	82.5	107	80.5	
Present	36	18.9	10	17.5	26	19.5	
Sub-therapy							0.061
Absent	76	40.0	17	29.8	59	44.4	
Present	114	60.0	40	70.2	74	55.6	
NLR							0.536
< 6.60	73	38.4	20	35.1	53	39.8	
≥6.60	117	61.6	37	64.9	80	60.2	
PLR							0.758
< 145	29	15.3	8	14.0	21	15.8	
≥145	161	84.7	49	86.0	112	84.2	

(Continued)

Table 1 (Continued).

Factors	Total		Low sPD-L1 Group		High sPD-L1 Group		p
	N = 190	(%)	N = 57	(30%)	N = 133	(70%)	
CRP (mg/L)							0.089
< 5.21	60	31.6	23	40.3	37	27.8	
≥5.21	130	68.4	34	59.7	96	72.2	
ALB (g/L)							0.776
< 40.0	97	51.1	30	52.6	67	50.4	
≥40.0	93	48.9	27	47.4	66	49.6	
GLB (g/L)							0.003
< 25.7	111	58.4	24	42.1	87	65.4	
≥25.7	79	41.6	33	57.9	46	34.6	
LDH (U/L)							0.203
< 212	126	66.3	34	59.6	92	69.2	
≥212	64	33.7	23	40.4	41	30.8	

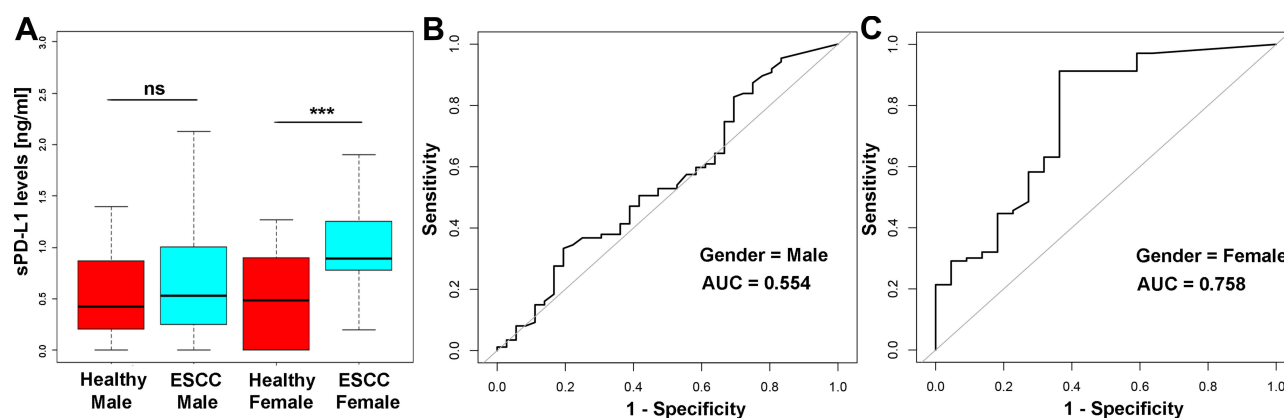
**Note:** \*The median age at diagnosis is 68 years for ESCC patients in this study.

**Abbreviations:** ESCC, esophageal squamous cell carcinoma; BMI, body mass index; ECOG PS, Eastern Cooperative Oncology Group performance score; LN metastasis, lymph node metastasis; Sub-therapy, subsequent second-line chemotherapy; NLR, Neutrophil lymphocyte ratio; PLR, platelet lymphocyte ratio; CRP, C-reactive protein; ALB, albumin; GLB, globulin; LDH, lactate dehydrogenase.

## sPD-L1 but Not PD-L1 is an Independent Prognostic Factor of OS in Advanced ESCC

After univariate Cox-regression analysis, variables of gender, ECOG performance score, lymph node metastasis, distant metastasis, sPD-L1, NLR, CRP, ALB, and GLB were entered into the multivariate Cox-regression analysis. However, tissue PD-L1 expression level was not found to be significant ( $p=0.898$ ). We adjusted for the possible factors related to ESCC patients' overall

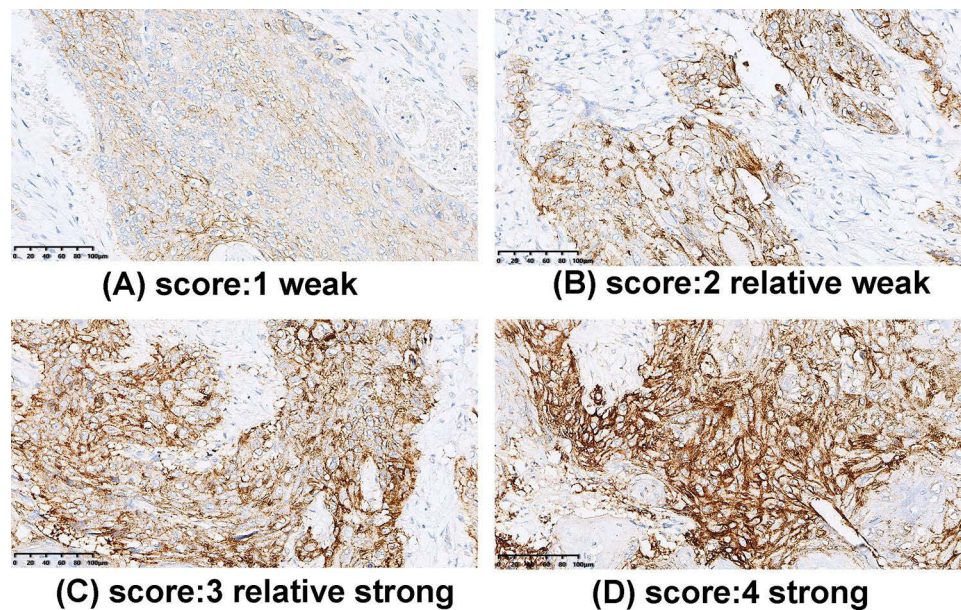
survival, including radiotherapy record, subsequent therapy record, age at diagnosis, BMI, tumor location, pathology grade, and T classification. Eventually, multivariate analysis demonstrated that HRs were significantly higher for the factors of female patients, lymph node metastasis, sPD-L1 high group, ECOG performance score  $\geq 2$ , and  $NLR \geq 6.60$  (Table 3). While sPD-L1 was still an independent prognostic factor, lymph node metastasis was found to be non-significant after adjustment for possible confounders.



**Figure 3** (A) sPD-L1 concentration was not significantly different between healthy male controls and male ESCC patients ( $U$ -test,  $p=0.448$ ), but it was significantly elevated in the ESCC female patients compared with healthy female controls ( $U$ -test,  $p < 0.001$ ). (B and C) sPD-L1 showed a powerful discrimination ability between ESCC patients and healthy controls in the female cohort ( $AUC=0.758$ ) than in the male cohort ( $AUC=0.554$ ).

**Note:** \*\*\* $p < 0.001$  was considered significant in  $U$ -test.





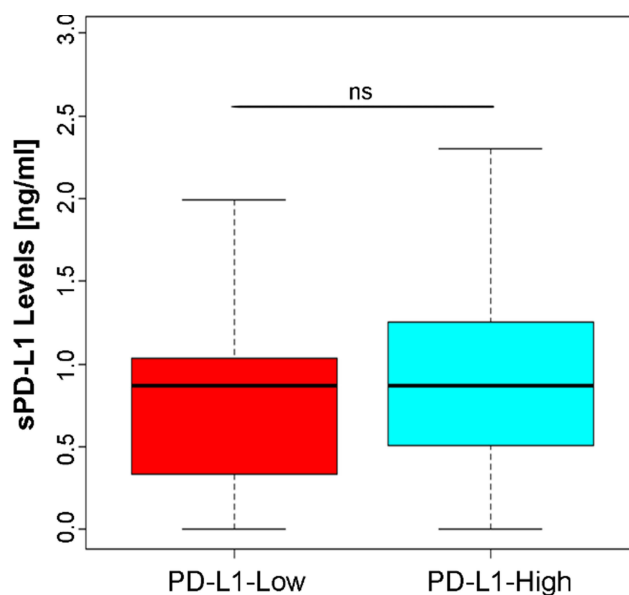
**Figure 4** Immunohistochemical staining of PD-L1 in ESCC. (A) Score 1: weak; (B) Score 2: relatively weak; (C) Score 3: relatively strong, and (D) Score 4: strong. Scale bar: 100 μm.

## Discussion

We conducted this study to evaluate the association of pre-treatment serum sPD-L1 concentration with clinicopathological characteristics and prognosis in patients with locally advanced or metastatic ESCC. Only a few reports have assessed the clinical role of sPD-L1 as a biomarker of prognosis in patients with malignancies,<sup>13–15</sup> and to the

best of our knowledge, the clinical significance of serum sPD-L1 level in ESCC and direct comparison of the expression between tissue and serum PD-L1 has not been demonstrated.

In this study, we assessed tissue PD-L1 expression and serum sPD-L1 concentration using matched tissue and pre-treatment serum samples from ESCC patients and made several novel discoveries. First, we assessed sPD-L1 concentration in 190 ESCC patients before treatment and in 58 healthy controls. We found that sPD-L1 levels were significantly elevated in patients with locally advanced or metastatic ESCC. sPD-L1 is released from PD-L1-positive cells, which binds to receptor of PD-1, and was not associated with tissue PD-L1 expression level, and the mechanisms behind it need to be further explored. Interestingly, sPD-L1 concentration was highly elevated in female patients and in patients with high level of GLB, it suggest this may have something to do with the lifestyle of both men and women, as well as their hormone levels. The specific mechanism needs to be further explored and studied, however, we did not observe any association with local disease progression factors, including lymph node metastasis, distant metastasis, poor pathologic grade, and impaired ECOG performance status. Second, we assessed tissue PD-L1 expression in ESCC, and divided the ESCC cohort into the PD-L1-high and PD-L1-low



**Figure 5** Correlation between tissue PD-L1 expression and serum sPD-L1 levels (U-test,  $p=0.246$ ).

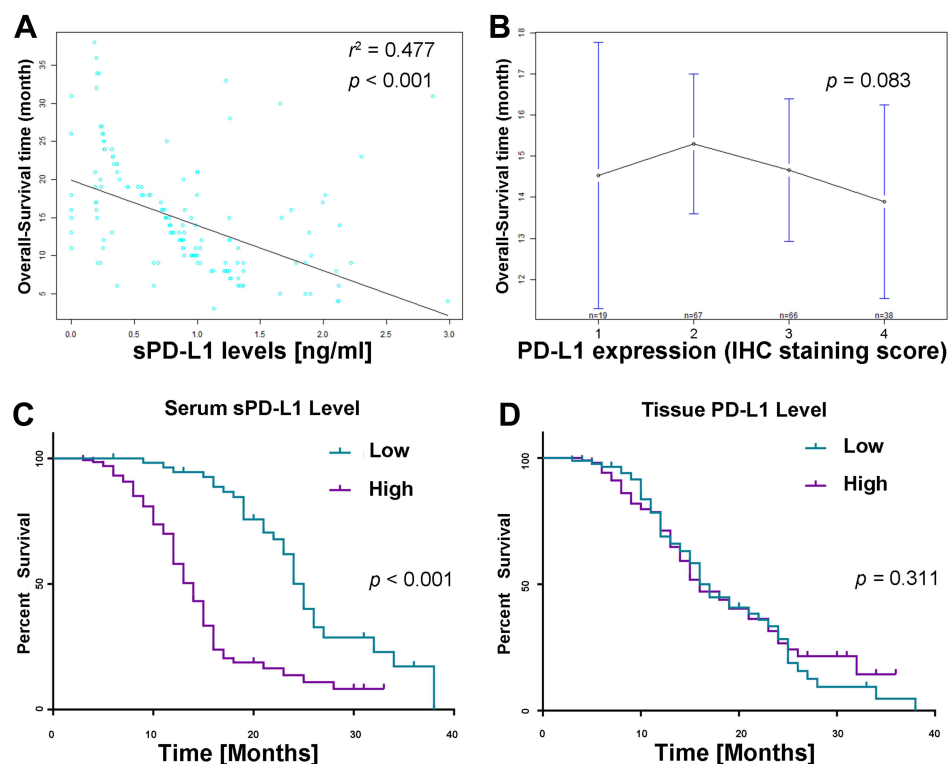
**Table 2** Correlation Between Tissue PD-L1 Expression and sPD-L1 Levels

	n	sPD-L1 Levels Mean $\pm$ SD	p value
PD-L1 expression			0.246
Low	86	0.87 $\pm$ 0.58	
High	104	0.88 $\pm$ 0.54	

groups based on IHC staining intensity. Eventually, there were 45.3% (n=86) patients in the PD-L1-low group (staining score 1 or 2) and 54.7% (n=104) in the PD-L1-high group (staining score 3 or 4). No factors correlated with tissue PD-L1 expression level in this study. Third, we evaluated association of sPD-L1 concentration and tissue PD-L1 expression level, but we did not observe significant correlation. It was consistent with the results of a previous study in gastric cancer.<sup>16</sup> Finally, the multivariate Cox regression analysis clearly showed that high level of sPD-L1 but not tissue PD-L1 expression was an independent prognostic factor of

overall survival in patients with locally advanced or metastatic ESCC.

The prognostic role of IHC-evaluated PD-L1 expression has been reported in many tumor types, including ESCC.<sup>17,18</sup> The majority of studies has demonstrated that PD-L1 expression was associated with impaired OS. Several studies investigated PD-L1 expression level in patients with ESCC. Recently, He et al reported that positive PD-L1 expression was a favorable predictor in ESCC patients with I–II stage disease or without lymph node metastasis, but not in patients with stage III disease or without lymph node metastasis.<sup>19</sup> Given the advanced stage of ESCC in our study, we conducted the survival analysis to investigate whether lymph node metastasis status could influence the prognostic value of tissue PD-L1 expression, but we found no differences in survival between high and low PD-L1 tissue expression irrespective of the presence of lymph node metastasis ([Supplementary Figure 2](#)). Similar results were found between patients with specific T grades (T2, T3, or T4), pathologic grades (well, moderately, or poorly differentiation), or distant metastasis status (metastasis or non-



**Figure 6** Survival analysis according to sPD-L1 and PD-L1. (A) Correlation between sPD-L1 level and OS. Each dot represents one ESCC patient ( $r^2=0.477$ ,  $p<0.001$ ). (B) Mean OS did not differ significantly between different tissue PD-L1 staining levels ( $p=0.083$ ). (C) Subgroup analysis of OS according to serum sPD-L1 concentration ( $p<0.001$ ). (D) Subgroup analysis of OS according to tissue PD-L1 expression level ( $p=0.311$ ).



**Table 3** Prognostic Factors for Overall-Survival

Factors	Univariate Analysis			Multivariate Analysis (Non-Adjusted)			Multivariate Analysis (Adjusted***)		
	HR	95% CI	p*	HR	95% CI	p**	HR	95% CI	p**
Age (years)									
<68									
≥68	1.02	0.64–1.63	0.932						
Gender									
Male									
Female	1.11	1.42–3.13	<0.001	1.02	0.63–1.65	0.933	1.08	0.63–1.83	0.788
BMI (kg/m <sup>2</sup> )									
<25									
≥25	0.66	0.40–1.09	0.102						
ECOG PS									
0–1									
≥2	2.16	1.41–3.30	<0.001	1.88	1.22–2.90	0.004	1.81	1.15–2.85	0.010
Tumor location									
Upper									
Middle	0.65	0.37–1.16	0.144						
Lower	0.83	0.47–1.46	0.508						
Overlapping	1.07	0.51–2.25	0.860						
Pathology grade									
Well									
Moderately	0.75	0.27–2.08	0.578						
Poorly	0.85	0.30–2.36	0.750						
T classification									
T2									
T3	0.69	0.42–1.13	0.144						
T4	0.76	0.46–1.25	0.278						
LN metastasis									
Absent									
Present	2.07	1.17–3.67	0.013	1.98	1.08–3.63	0.028	1.87	0.97–3.61	0.063
Distant metastasis									
Absent									
Present	1.56	1.07–2.27	0.021	1.43	0.97–2.11	0.069	1.48	0.88–2.48	0.137
sPD-L1									
Low									
High	3.96	2.51–6.26	<0.001	3.71	2.05–6.71	< 0.001	4.06	2.12–7.79	< 0.001
PD-L1									
Low									
High	0.98	0.67–1.42	0.898						
NLR									
<6.60									
≥6.60	1.57	1.03–2.31	0.036	1.72	1.08–2.74	0.021	1.69	1.05–2.70	0.030
PLR									
<145									
≥145	1.29	0.75–2.23	0.360						

(Continued)

Table 3 (Continued).

Factors	Univariate Analysis			Multivariate Analysis (Non-Adjusted)			Multivariate Analysis (Adjusted***)		
	HR	95% CI	p*	HR	95% CI	p**	HR	95% CI	p**
CRP (mg/L)									
<5.21									
≥5.21	1.55	1.02–2.36	0.038	1.29	0.84–2.00	0.2502	1.14	0.72–1.83	0.573
ALB (g/L)									
<40.0									
≥40.0	1.39	0.95–2.02	0.093	1.27	0.85–1.90	0.251	1.24	0.80–1.92	0.337
GLB (g/L)									
<25.7									
≥25.7	0.67	0.45–0.99	0.042	0.95	0.63–1.42	0.796	0.92	0.60–1.40	0.688
LDH (U/L)									
<212									
≥212	0.76	0.51–1.14	0.182						

**Notes:** \*p<0.1 was considered significant in Univariate analysis. \*\*p<0.05 was considered significant in Multivariate analysis.

**Abbreviations:** HR, hazard ratio; 95% CI, 95% confidence intervals; BMI, body mass index; ECOG PS, Eastern Cooperative Oncology Group performance score; LN metastasis, lymph node metastasis; NLR, neutrophil–lymphocyte ratio; PLR, platelet–lymphocyte ratio; CRP, C-reactive protein; ALB, albumin; GLB, globulin; LDH, lactate dehydrogenase.

metastasis). Jiang et al recently reported that high PD-L1 expression was associated with a favorable prognosis in patients with ESCC undergoing postoperative adjuvant radiotherapy,<sup>20</sup> while Wang et al reported that high PD-L1 expression on tumor cells was linked with impaired OS in ESCC patients.<sup>21</sup> These results suggest that PD-L1 expression in ESCC is highly heterogeneous, and survival benefit may also correlate with specific clinicopathological characteristics or treatment measures.

PD-L1 is broadly expressed on the membrane or cytoplasm of various types of cells, including tumor cells, T cells, B cells, dendritic cells, macrophages, and even bronchial epithelial cells.<sup>16,22,23</sup> Recent studies have demonstrated the existence of soluble PD-L1 released from PD-L1 positive cells in human serum. In addition, Takeuchi et al reported that sPD-L1 in plasma of patients with NSCLC also had PD-L1 binding capacity.<sup>12</sup> Furthermore, Shigemori et al found that a high level of PD-L1 expression was associated with a lower density of CD3- and CD8-positive Tumor-infiltrating cell (TILs) in gastric cancer, while sPD-L1 concentration in serum had no significant association with the density of TILs in the tumor microenvironment.<sup>16</sup> It was suggested that PD-L1 but not sPD-L1 could modulate host tumor immunity in primary tumor location.

Several studies have demonstrated the feasibility of circulating molecular or hematologic markers as biomarkers of

OS in patients with malignancies. Sven H. Loosen reported that circulating levels of osteopontin could predict patients' outcomes after resection of colorectal liver metastases.<sup>24</sup> Cho et al evaluated the NLR in 621 patients and showed that high NLR was an independent poor prognostic factor in head and neck cancer treated with radiotherapy.<sup>25</sup> Recently, studies also demonstrated that sPD-L1 could act as a biomarker of survival in patients with cancer. Shigemori et al evaluated sPD-L1 levels in serum samples before treatment in 180 gastric cancer patients who underwent surgery, and reported that high sPD-L1 significantly impaired the OS in gastric cancer patients.<sup>16</sup> More recently, Bian et al quantified circulating sPD-L1 concentration in 59 patients with pancreatic adenocarcinoma (PDAC) and showed that elevated level of serum sPD-L1 was also an independent prognostic factor in PDAC patients.<sup>10</sup> Likewise, Ha et al reported that high level of sPD-L1 was one of the independent poor prognostic factors in patients with advanced biliary tract cancer who received palliative chemotherapy.<sup>26</sup> For immunotherapy, Costantini et al demonstrated that plasma sPD-L1 level at baseline was associated with clinical outcome in NSCLC patients treated with nivolumab (one of the PD-1 blockers).<sup>27</sup> These studies revealed that monitoring the concentration of serum sPD-L1 might be helpful for predicting survival in subgroups of patients and subsequently improve their treatment.

In our study, we aimed to assess the prognostic value of serum sPD-L1 in patients with locally advanced or metastatic ESCC who received cytotoxic combination chemotherapy. In total, 190 eligible patients were enrolled, and chemotherapy regimens were restricted to docetaxel plus nedaplatin, a conventional chemotherapy regimen for advanced ESCC. First, our results showed that sPD-L1 level was significantly elevated in patients with advanced ESCC patients compared with healthy controls, and interestingly, it was more obvious in female than in male patients. Next, we made a direct association analysis of the clinical burden, and we found no correlation between tissue and serum PD-L1. This result was in accordance with the previous report by Tsunehiko Shigemori in gastric cancer patients. Several studies showed that serum sPD-L1 in cancer patients might originate from PD-L1 released during pro-tumor inflammatory responses, antitumor immune responses, and intrinsic activities in tumor cells. These sources might influence the circulating sPD-L1 levels in ESCC patients. Then, we conducted KM survival and Cox regression analyses and demonstrated that high sPD-L1 concentration significantly impaired the OS and acted as an independent prognostic factor in patients with locally advanced or metastatic ESCC after adjustment for possible confounders.

Our study showed that serum sPD-L1 concentration did not correlate with major clinicopathological characteristics or hematologic markers including lymph node metastasis, distant metastasis, tumor pathologic grade, T grade, ECOG performance status, NLR, and PLR ([Supplementary Figure 3](#)). Therefore, our findings suggest that sPD-L1 does not reflect the local disease development in the tumor's primary location, distant metastasis, or host hematologic characteristics. On the other hand, previous evidence suggested that PD-L1 could suppress the activation of T cells and decrease the density of T cells infiltrating the tumor microenvironment. sPD-L1 was also associated with immune suppression and host-immune damage through inhibiting T cell activation in non-small cell lung carcinoma (NSCLC), aggressive renal cell carcinoma, and aggressive diffuse large-B cell lymphoma.<sup>28–30</sup> However, the role of sPD-L1 in the host immune system in ESCC patients needs to be confirmed by further research. Limitations of the present study included the single-center, single-arm design, and the relatively small sample size. Therefore, a more accurate and effective prognostic model based on sPD-L1 might be developed for individual prognosis of clinical outcome in ESCC patients.

## Conclusion

In conclusion, our study demonstrated that sPD-L1 concentration in serum did not correlate with tissue PD-L1 expression. Serum sPD-L1 but not tissue PD-L1 expression level might be used as a prognostic biomarker in patients with locally advanced or metastatic ESCC.

## Acknowledgments

Thank you for the sincere cooperation between creators. The creators report no clashes of intrigued related to this work. Thanks to LetPub for its touch on the language and grammar of articles.

## Disclosure

The authors declare no conflict of interest. This study was approved by Ethics Committee of Affiliated Hospital of Shandong University of Traditional Chinese Medicine. The healthy volunteers provided informed consent to participate in this study, and that it was conducted in accordance with the Declaration of Helsinki.

## References

1. Glenn TF. Esophageal cancer. Facts, figures, and screening. *Gastroenterol Nurs*. 2001;24:271–275. doi:10.1097/00001610-200111000-00002
2. Wei WQ, Chen ZF, He YT, et al. Long-term follow-up of a community assignment, one-time endoscopic screening study of esophageal cancer in China. *J Clin Oncol*. 2015;33:1951–1957. doi:10.1200/jco.2014.58.0423
3. Chen W, Zheng R, Baade PD, et al. Cancer statistics in China, 2015. *CA Cancer J Clin*. 2016;66:115–132. doi:10.3322/caac.21338
4. Herskovic A, Russell W, Liptay M, Fidler MJ, Al-Sarraf M. Esophageal carcinoma advances in treatment results for locally advanced disease: review. *Ann Oncol*. 2012;23:1095–1103. doi:10.1093/annonc/mdr433
5. Hirano H, Kato K. Systemic treatment of advanced esophageal squamous cell carcinoma: chemotherapy, molecular-targeting therapy and immunotherapy. *Jpn J Clin Oncol*. 2019;49:412–420. doi:10.1093/jjco/hyz034
6. Kajiura S, Hosokawa A, Yoshita H, et al. Phase I study of docetaxel plus nedaplatin in patients with metastatic or recurrent esophageal squamous cell carcinoma after cisplatin plus 5-fluorouracil treatment. *Am J Clin Oncol*. 2016;39:13–17. doi:10.1097/coc.000000000000018
7. Yang PW, Huang PM, Yong LS, et al. Circulating interleukin-6 is associated with prognosis and genetic polymorphisms of MIR608 in patients with esophageal squamous cell carcinoma. *Ann Surg Oncol*. 2018;25:2449–2456. doi:10.1245/s10434-018-6532-4
8. Bradley CA. Pembrolizumab improves OS across PD-L1 subgroups. *Nat Rev Clin Oncol*. 2019;16:403. doi:10.1038/s41571-019-0213-5
9. Alsaab HO, Sau S, Alzhrani R, et al. PD-1 and PD-L1 checkpoint signaling inhibition for cancer immunotherapy: mechanism, combinations, and clinical outcome. *Front Pharmacol*. 2017;8:561. doi:10.3389/fphar.2017.00561
10. Bian B, Fanale D, Dusetta N, et al. Prognostic significance of circulating PD-1, PD-L1, pan-BTN3As, BTN3A1 and BTLA in patients with pancreatic adenocarcinoma. *Oncoimmunology*. 2019;8:e1561120. doi:10.1080/2162402x.2018.1561120

11. Shen H, Ji Y, Zhou D, Zhang Y. Soluble programmed death-ligand 1 are highly expressed in peripheral T-cell lymphoma: a biomarker for prognosis. *Hematology (Amsterdam, Netherlands)*. 2019;24:392–398. doi:10.1080/16078454.2019.1590965
12. Takeuchi M, Doi T, Obayashi K, et al. Soluble PD-L1 with PD-1-binding capacity exists in the plasma of patients with non-small cell lung cancer. *Immunol Lett*. 2018;196:155–160. doi:10.1016/j.imlet.2018.01.007
13. Chang B, Huang T, Wei H, et al. The correlation and prognostic value of serum levels of soluble programmed death protein 1 (sPD-1) and soluble programmed death-ligand 1 (sPD-L1) in patients with hepatocellular carcinoma. *Cancer Immunol Immunother*. 2019;68:353–363. doi:10.1007/s00262-018-2271-4
14. Cubillos-Zapata C, Martinez-Garcia MA, Campos-Rodriguez F, et al. Soluble PD-L1 is a potential biomarker of cutaneous melanoma aggressiveness and metastasis in obstructive sleep apnoea patients. *Eur Respir J*. 2019;53:1801298. doi:10.1183/13993003.01298-2018
15. Kushlinskii NE, Gershtein ES, Morozov AA, et al. Soluble ligand of the immune checkpoint receptor (sPD-L1) in blood serum of patients with renal cell carcinoma. *Bull Exp Biol Med*. 2019;166:353–357. doi:10.1007/s10517-019-04349-8
16. Shigemori T, Toiyama Y, Okugawa Y, et al. Soluble PD-L1 expression in circulation as a predictive marker for recurrence and prognosis in gastric cancer: direct comparison of the clinical burden between tissue and serum PD-L1 expression. *Ann Surg Oncol*. 2019;26:876–883. doi:10.1245/s10434-018-07112-x
17. Hsieh CC, Hsu HS, Li AF, Chen YJ. Clinical relevance of PD-L1 and PD-L2 overexpression in patients with esophageal squamous cell carcinoma. *J Thorac Dis*. 2018;10:4433–4444. doi:10.21037/jtd.2018.06.167
18. Rong L, Liu Y, Hui Z, et al. PD-L1 expression and its clinicopathological correlation in advanced esophageal squamous cell carcinoma in a Chinese population. *Diagn Pathol*. 2019;14:6. doi:10.1186/s13000-019-0778-4
19. Guo W, Zhang F, Shao F, et al. PD-L1 expression on tumor cells associated with favorable prognosis in surgically resected esophageal squamous cell carcinoma. *Hum Pathol*. 2019;84:291–298. doi:10.1016/j.humpath.2018.09.014
20. Jiang C, Zhu Y, Tang S, et al. High PD-L1 expression is associated with a favorable prognosis in patients with esophageal squamous cell carcinoma undergoing postoperative adjuvant radiotherapy. *Oncol Lett*. 2019;17:1626–1634. doi:10.3892/ol.2018.9747
21. Xu F, Xu L, Wang Q, An G, Feng G, Liu F. Clinicopathological and prognostic value of programmed death ligand-1 (PD-L1) in renal cell carcinoma: a meta-analysis. *Int J Clin Exp Med*. 2015;8:14595–14603.
22. Kim JW, Nam KH, Ahn SH, et al. Prognostic implications of immunosuppressive protein expression in tumors as well as immune cell infiltration within the tumor microenvironment in gastric cancer. *Gastric Cancer*. 2016;19:42–52. doi:10.1007/s10120-014-0440-5
23. Spranger S, Spaepen RM, Zha Y, et al. Up-regulation of PD-L1, IDO, and T(regs) in the melanoma tumor microenvironment is driven by CD8(+) T cells. *Sci Transl Med*. 2013;5:200ra116. doi:10.1126/scitranslmed.3006504
24. Loosen SH, Heise D, Dejong CH, Roy S, Tacke F. Circulating levels of osteopontin predict patients' outcome after resection of colorectal liver metastases. *J Clin Med*. 2018;7:390. doi:10.3390/jcm7110390
25. Cho Y, Kim JW, Yoon HI, Lee CG, Keum KC, Lee IJ. The prognostic significance of neutrophil-to-lymphocyte ratio in head and neck cancer patients treated with radiotherapy. *J Clin Med*. 2018;7:512. doi:10.3390/jcm7120512
26. Ha H, Nam AR, Bang JH, et al. Soluble programmed death-ligand 1 (sPDL1) and neutrophil-to-lymphocyte ratio (NLR) predicts survival in advanced biliary tract cancer patients treated with palliative chemotherapy. *Oncotarget*. 2016;7:76604–76612. doi:10.18632/oncotarget.12810
27. Costantini A, Julie C, Dumenil C, et al. Predictive role of plasmatic biomarkers in advanced non-small cell lung cancer treated by nivolumab. *Oncoimmunology*. 2018;7:e1452581. doi:10.1080/2162402x.2018.1452581
28. Frigola X, Inman BA, Lohse CM, et al. Identification of a soluble form of B7-H1 that retains immunosuppressive activity and is associated with aggressive renal cell carcinoma. *Clin Cancer Res*. 2011;17:1915–1923. doi:10.1158/1078-0432.ccr-10-0250
29. Rossille D, Gressier M, Damotte D, et al. High level of soluble programmed cell death ligand 1 in blood impacts overall survival in aggressive diffuse large B-Cell lymphoma: results from a French multicenter clinical trial. *Leukemia*. 2014;28:2367–2375. doi:10.1038/leu.2014.137
30. Zhao J, Zhang P, Wang J, et al. Plasma levels of soluble programmed death ligand-1 may be associated with overall survival in nonsmall cell lung cancer patients receiving thoracic radiotherapy. *Medicine*. 2017;96:e6102. doi:10.1097/md.00000000000006102

## Cancer Management and Research

Dovepress

### Publish your work in this journal

Cancer Management and Research is an international, peer-reviewed open access journal focusing on cancer research and the optimal use of preventative and integrated treatment interventions to achieve improved outcomes, enhanced survival and quality of life for the cancer patient.

The manuscript management system is completely online and includes a very quick and fair peer-review system, which is all easy to use. Visit <http://www.dovepress.com/testimonials.php> to read real quotes from published authors.

Submit your manuscript here: <https://www.dovepress.com/cancer-management-and-research-journal>