

Ibuprofen-loaded poly(lactic-co-glycolic acid) films for controlled drug release

Jianmei Pang¹
Yuxia Luan¹
Feifei Li¹
Xiaoqing Cai¹
Jimin Du²
Zhonghao Li³

¹School of Pharmaceutical Science, Shandong University, Jinan, Shandong Province, PR China; ²School of Chemistry and Chemical Engineering, Anyang Normal University, Henan Province, PR China; ³School of Materials Science and Engineering, Shandong University, Jinan, Shandong Province, PR China

Abstract: Ibuprofen- (IBU) loaded biocompatible poly(lactic-co-glycolic acid) (PLGA) films were prepared by spreading polymer/ibuprofen solution on the nonsolvent surface. By controlling the weight ratio of drug and polymer, different drug loading polymer films can be obtained. The synthesized ibuprofen-loaded PLGA films were characterized with scanning electron microscopy, powder X-ray diffraction, and differential scanning calorimetry. The drug release behavior of the as-prepared IBU-loaded PLGA films was studied to reveal their potential application in drug delivery systems. The results show the feasibility of the as-obtained films for controlling drug release. Furthermore, the drug release rate of the film could be controlled by the drug loading content and the release medium. The development of a biodegradable ibuprofen system, based on films, should be of great interest in drug delivery systems.

Keywords: ibuprofen, controlled release, poly(lactic-co-glycolic acid), films

Introduction

Nowadays, poly(lactic-co-glycolic acid) (PLGA) is widely applied in controlled drug delivery systems due to its biodegradability, toxicological safety, and good biocompatibility.¹⁻⁵ Specifically, PLGA-based carriers have been used in long-term drug delivery systems because they have the potential to control drug release from a few days up to several months.^{6,7} In general, PLGA can degrade into water soluble, non-toxic products of normal metabolism through hydrolysis which is important for its practical application.⁸ Moreover, PLGA is one of the few synthetic polymers which have been approved for human clinical use. Several products such as Lupron Depot based on PLGA microparticles are available on the market.^{5,9} However, PLGA-based carriers are mostly solid particles including nanoparticles, microparticles, and microcapsules, which have the disadvantages of low drug loading capacity, easy aggregation, and polydispersable particle sizes.¹⁰ Therefore, it is necessary to prepare aspherical carriers instead of particles. Various biocompatible and biodegradable polymer films have been widely used for controlled drug release due to their excellent characteristics, such as high surface area, softness, absorbency, and ease of fabrication into many product forms.¹¹⁻¹⁶ Until now, a number of methods have been developed for fabrication of polymer films, such as layer-by-layer (LBL) method¹⁷ and solvent evaporation technique.¹⁸ However, the reported methods usually involve some cumbersome processing steps and are time-consuming. Therefore developing a simple route to prepare drug-loaded fibers is still a great challenge.

Ibuprofen (IBU) is classified by the Biopharmaceutics Classification System (BCS) as a Class II active pharmaceutical ingredient as it presents low solubility and

Correspondence: Yuxia Luan
School of Pharmaceutical Science,
Shandong University, Jinan, Shandong
Province, 250012, PR China
Tel +86 531 88382007
Fax +86 531 88382731
Email yuxialuan@sdu.edu.cn

high permeability.¹⁹ Thus, increasing the solubility of IBU to enhance its bioavailability is the major obstacle.^{20,21} Previous studies indicate that the formulated IBU microspheres have a high initial burst resulting from the accumulation of drug crystals on the surface of microspheres.^{8,22} In some cases, the formulated IBU microspheres are unsuitable for well controlled release.

In this paper we present a very simple and general route to prepare drug-loaded films.^{23,24} The biocompatible PLGA and IBU are used as the model polymer and drug, respectively. Both PLGA and IBU are dissolved in tetrahydrofuran (THF), and then 50 μL of the solution is injected on the surface of the water. PLGA and IBU are indissoluble in water while THF and water are mixable. Thus, the IBU-loaded PLGA film is obtained on the surface of water. Films with different drug-loading contents could be prepared by controlling the ratios of IBU and PLGA. The aims of this study are to prepare IBU-loaded PLGA films with a simple route, and to characterize these films for their potential applications in drug delivery systems.

Materials and methods

Materials

L-lactic acid (LA) and glycolic acid (GA) were purchased from Sinopharm Chemical Reagent Co. Ltd (Shanghai, China). PLGA was synthesized according to the literature.²⁵ The M_w of PLGA (LA/GA = 75/25, $M_w = 80,000$ g/mol) was determined by the inherent viscosity. IBU was bought from Aldrich. Double-distilled water was used in all the experiments. All chemicals were used as received.

Preparation of drug-loaded PLGA films

For a typical synthesis, appropriate amounts of PLGA and IBU were dissolved in tetrahydrofuran (THF). The weight ratio of THF/PLGA/IBU in the solution was $W_{\text{THF}}/W_{\text{PLGA}}/W_{\text{IBU}} = 85/12.5/2.5$. A pipette was used to take 50 μL of the solution and then the solution was injected on the surface of distilled water in a beaker (the distance between the water surface and the drop source was 1 cm). The solution spread quickly on the surface of water and solidified into a film within 3 seconds then the film was taken out at once and washed with distilled water and dried in air at 40°C. For the samples synthesized with different weight ratios, such as $W_{\text{THF}}/W_{\text{PLGA}}/W_{\text{IBU}} = 85/11.25/3.75$ and $W_{\text{THF}}/W_{\text{PLGA}}/W_{\text{IBU}} = 85/10/5$, the synthetic procedures were similar to the above.

Drug loading and encapsulation efficiency

A certain amount of dried film was dissolved in 10 mL of THF. The UV absorbance of the solution was measured using a UV spectrophotometer at wavelength 264 nm which was

a typical absorbance of IBU in THF. Pure THF was used for a blank experiment before the UV measurement. Drug loading content (DLC) and encapsulation efficiency (EE) were determined using the following equations.

$$\text{DLC (\%)} = (\text{IBU weight in film/film weight}) \times 100\% \quad (1)$$

$$\text{EE (\%)} = (\text{actual weight of IBU/theoretical weight of IBU}) \times 100\% \quad (2)$$

In vitro release studies

Three kinds of release mediums (phosphate buffered solution, PBS, pH = 6.8; phosphate buffered solution, PBS, pH = 7.4; and HCl aqueous solution, pH = 1.2) were used to study the in vitro release. In drug release studies, PBS was the typical medium to mimic intestinal fluid. The release of samples with different ratios ($W_{\text{THF}}/W_{\text{PLGA}}/W_{\text{IBU}} = 85/12.5/2.5$, $W_{\text{THF}}/W_{\text{PLGA}}/W_{\text{IBU}} = 85/11.25/3.75$, and $W_{\text{THF}}/W_{\text{PLGA}}/W_{\text{IBU}} = 85/10/5$) were performed in 50 mL PBS (pH 6.8). The influence of the release medium on the sample ($W_{\text{THF}}/W_{\text{PLGA}}/W_{\text{IBU}} = 85/12.5/2.5$) was performed in 50 mL HCl solution (pH 1.2) and PBS (pH 7.4), respectively. The in vitro experiments were carried out in a heated bath at 37°C in triplicate. The sample was sealed in a dialysis bag (from Solarbio, Beijing, China), which was suspended in 50 mL release medium in a sealed beaker under continuous stirring at a rate of 100 rpm.^{26,27} At predetermined time intervals, 1.5 mL of the resultant release medium was sampled for analysis, then 1.5 mL of fresh release medium was immediately added to maintain the original volume. Based on the standard curve, the IBU concentration in the sampled release medium was obtained through UV experiment ($\lambda = 222$ nm).

The cumulative amount of IBU released from the samples was calculated using the equation:

$$\text{Cumulative amount released (\%)} = M_t/M_{\text{total}} \times 100\%$$

M_t was the amount of IBU released from the PLGA films at time t and M_{total} was the total amount of IBU loaded in the PLGA films.

Drug release kinetics

The kinetics of IBU release from the films were determined by fitting different curves to distinct models. The models included Zero order, First order, Higuchi release model, Ritger-Peppas, and Biexponential model. The linear form of each function was evaluated using R regression analysis.

SEM

Scanning electron microscopy (SEM) was done using a Hitachi SU-70 FESEM scanning electron microscope

operated at 3 kV. Samples were sputtered with Au prior to imaging (the thickness of Au was 5 nm).

X-ray diffraction (XRD) measurements

XRD measurements were obtained on a Rigaku Dmax-rc X-ray diffractometer with Ni filtered Cu K α radiation. The angular range was from 10° to 60°.

DSC measurements

Differential scanning calorimetry (DSC) measurements were performed using CDR-4P (Shanghai Precision and Scientific Instrument Co., Ltd. China). Weighed samples of 5 mg were placed in aluminum pans and the samples were scanned from 40°C to 200°C using a heating rate of 10°C/min.

Results and discussion

Drug loading and encapsulation efficiency

The results of drug loading and encapsulation efficiencies with different $W_{\text{THF}}/W_{\text{PLGA}}/W_{\text{IBU}}$ ratios are shown in Table 1. The drug loading contents for the samples of $W_{\text{THF}}/W_{\text{PLGA}}/W_{\text{IBU}} = 85/12.5/2.5$, $W_{\text{THF}}/W_{\text{PLGA}}/W_{\text{IBU}} = 85/11.25/3.75$, and $W_{\text{THF}}/W_{\text{PLGA}}/W_{\text{IBU}} = 85/10/5$ are $14.7\% \pm 0.2\%$, $22\% \pm 1.6\%$ and $29.7\% \pm 0.4\%$, respectively. The values are a little smaller than the corresponding ones in theory (16.7%, 25%, and 33.3%, respectively). As for the encapsulation efficiency, the samples exhibit high percentages (more than 88%) and there are no remarkable differences among the different samples. These results reveal that our method is a simple and efficient way to prepare films with high drug loading and encapsulation efficiency. The high drug loading and encapsulation efficiency can be explained by the solubility of IBU and PLGA in THF, but their insolubility in water. THF, however, is intersoluble with water. When the mixed solution spreads on the water surface, the THF molecules immediately diffuse into the water phase, leaving the PLGA and IBU molecules to quickly solidify due to their indissolubility in water. Thus, high drug loading and encapsulation efficiency are obtained.

Electron microscopy

Figure 1 shows SEM images of the IBU-loaded PLGA film with the ratio of $W_{\text{THF}}/W_{\text{PLGA}}/W_{\text{IBU}} = 85/12.5/2.5$.

Table 1 Drug loading and encapsulation efficiency (%) at various IBU/PLGA weight ratios (\pm SD, $n = 3$)

Ratio of $W_{\text{THF}}/W_{\text{PLGA}}/W_{\text{IBU}}$	85/12.5/2.5	85/11.25/3.75	85/10/5
Drug loading (%)	14.7 ± 0.2	22.0 ± 1.6	29.7 ± 0.4
Theoretical loading (%)	16.7	25	33.3
Encapsulation efficiency (%)	88.2 ± 1.2	88.0 ± 6.6	89.1 ± 1.3

Abbreviations: IBU, ibuprofen; PLGA, poly(lactic-co-glycolic acid).

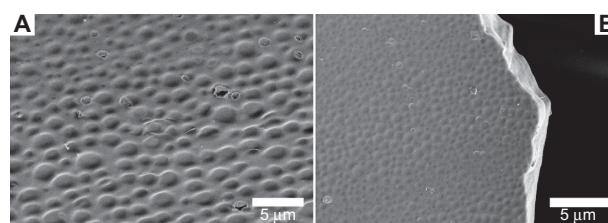


Figure 1 SEM images of IBU-loaded PLGA films ($W_{\text{THF}}/W_{\text{PLGA}}/W_{\text{IBU}} = 85/12.5/2.5$), the surface (A), and the thickness (B).

Abbreviations: IBU, ibuprofen; PLGA, poly(lactic-co-glycolic acid); SEM, scanning electron microscopy.

Figure 1A exhibits the top surface of the film, which has a convex pattern. The diameter of each convex shape is $1.52 \pm 0.45 \mu\text{m}$. Figure 1B shows a cross-section image of the film, which has a smooth surface, indicating the absence of a void in the film.

Figure 2 shows the SEM images of films with different ratios of $W_{\text{THF}}/W_{\text{PLGA}}/W_{\text{IBU}}$. Figure 2A shows the film with a ratio of $W_{\text{THF}}/W_{\text{PLGA}}/W_{\text{IBU}} = 85/11.25/3.75$. It shows that the film has a convex pattern on the top surface. The diameter of each convex shape is $0.87 \pm 0.11 \mu\text{m}$. The insert in Figure 2A shows the rough cross-section surface which indicates the presence of voids in the film. Figure 2B shows the film with a ratio of $W_{\text{THF}}/W_{\text{PLGA}}/W_{\text{IBU}} = 85/10/5$. The top surface is relatively smooth and has no convex pattern. Furthermore, the cross-section of the film is rough, which indicates that there are voids in the film.

The SEM images in Figure 1 and Figure 2 show that there are voids in the film formed with higher drug concentration ($W_{\text{THF}}/W_{\text{PLGA}}/W_{\text{IBU}} = 85/11.25/3.75$ and $W_{\text{THF}}/W_{\text{PLGA}}/W_{\text{IBU}} = 85/10/5$) while there are no obvious voids in the film formed at lower drug concentration ($W_{\text{THF}}/W_{\text{PLGA}}/W_{\text{IBU}} = 85/12.5/2.5$). There is a convex pattern in the samples of $W_{\text{THF}}/W_{\text{PLGA}}/W_{\text{IBU}} = 85/12.5/2.5$ and $W_{\text{THF}}/W_{\text{PLGA}}/W_{\text{IBU}} = 85/11.25/3.75$. However, there is no convex pattern for the sample of $W_{\text{THF}}/W_{\text{PLGA}}/W_{\text{IBU}} = 85/10/5$. The convex-patterned surface may result from the surface tension

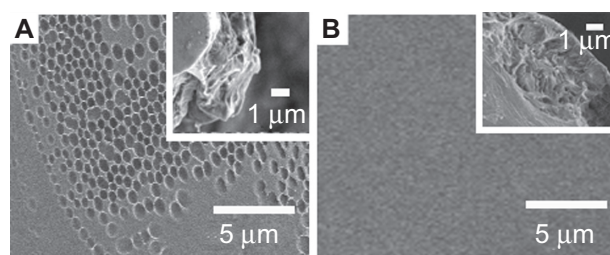


Figure 2 SEM images of IBU-loaded PLGA films, $W_{\text{THF}}/W_{\text{PLGA}}/W_{\text{IBU}} = 85/11.25/3.75$ (A) and $W_{\text{THF}}/W_{\text{PLGA}}/W_{\text{IBU}} = 85/10/5$ (B).

Abbreviations: IBU, ibuprofen; PLGA, poly(lactic-co-glycolic acid); SEM, scanning electron microscopy.

when the phase separation proceeds at the top surface of the polymer solution, ie, the air/solution interface.²⁴ The films have a dimension of about 33 cm², which is as large as the Baker's dimension. The thickness of all the films with different weight ratios is in the range of 2 to 5 μm. In short, the ratio of $W_{\text{THF}}/W_{\text{PLGA}}/W_{\text{IBU}}$ has a large influence on the surface morphology and structure of the films. For the formation of IBU-loaded PLGA film, the THF solvent diffuses quickly into water which leaves the undissolved IBU and PLGA solidified. In this case, the IBU and PLGA form a thin film on the surface of water. It is known that IBU and PLGA can dissolve well in THF as molecular state, and therefore the drug is distributed homogenously in the formed films.

XRD measurements

X-ray diffraction (XRD) patterns were established on the pure IBU, pure PLGA, and the IBU-loaded PLGA films, in order to study the physical state of these systems. Generally, when the patterns of two crystal forms are identical in terms of peak positions, they have the same internal crystal structure, whereas if the patterns differ, the crystals have a different internal structure and are recognized as polymorphs.²⁸ The XRD pattern of pure PLGA shown in Figure 3a has no evident brand, which denotes an amorphous polymeric compound. Figure 3b shows the XRD patterns of pure IBU, which yields typical peaks at 16°, 20°, and 22°, showing the crystalline substance. In the curves of IBU-loaded PLGA films shown in Figure 3c, d, and e, peaks at 16°, 20°, and 22° were detected in the three samples, which demonstrates that IBU had a crystalline state in the film. The difference in the relative

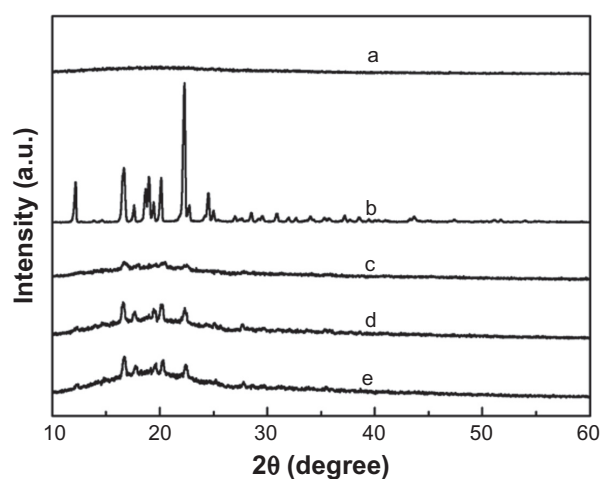


Figure 3 XRD patterns of: a) pure IBU, b) PLGA, and IBU-loaded PLGA films: c) $W_{\text{THF}}/W_{\text{PLGA}}/W_{\text{IBU}} = 85/12.5/2.5$; d) $W_{\text{THF}}/W_{\text{PLGA}}/W_{\text{IBU}} = 85/11.25/3.75$ and e) $W_{\text{THF}}/W_{\text{PLGA}}/W_{\text{IBU}} = 85/10/5$.

Abbreviations: IBU, ibuprofen; PLGA, poly(lactic-co-glycolic acid); XRD, X-ray diffraction.

intensity of the peaks is due either to the variation of the crystal habit, because the relative abundance of the planes exposed to X-ray source is altered, or to differences in the size of the crystals.²⁸

DSC measurements

In order to further study the drug-polymer interaction, the DSC thermal characteristics of IBU-loaded PLGA films (c, d, and e) are compared with pure PLGA (a) and pure IBU (b) in Figure 4. The endothermic peak of PLGA (curve a) is observed at 56°C, which can be attributed to the glass-transition temperature of PLGA. The curve in Figure 4 shows a sharp endothermic peak at 78°C, which indicates that the melting peak of pure IBU is 78°C. The curves c, d, and e in Figure 4 show the peaks of different drug-loading films. Comparing with pure IBU, the melting points are 65, 75, and 73 for the samples of $W_{\text{THF}}/W_{\text{PLGA}}/W_{\text{IBU}} = 85/12.5/2.5$, $W_{\text{THF}}/W_{\text{PLGA}}/W_{\text{IBU}} = 85/11.25/3.75$ and $W_{\text{THF}}/W_{\text{PLGA}}/W_{\text{IBU}} = 85/10/5$, respectively. The shift of the melting point indicates a decrease of drug crystallinity. These results are consistent with the XRD analysis, which reveals that IBU is crystalline while PLGA is amorphous in the drug-loaded film.

In vitro release studies

We examined the drug release behaviors of the as-prepared IBU-loaded PLGA films, in order to reveal their potential use in drug delivery systems. Figure 5 shows the release profiles of pure IBU and different ratios of $W_{\text{THF}}/W_{\text{PLGA}}/W_{\text{IBU}}$ films in phosphate buffered solution (PBS, pH 6.8). Curve (a) shows that the pure IBU releases rapidly into the release medium

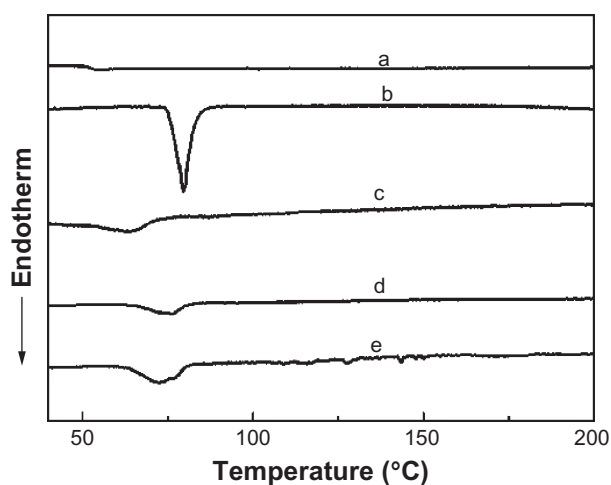


Figure 4 DSC curves of PLGA (a), pure IBU (b), and IBU-loaded films: c) $W_{\text{THF}}/W_{\text{PLGA}}/W_{\text{IBU}} = 85/12.5/2.5$; d) $W_{\text{THF}}/W_{\text{PLGA}}/W_{\text{IBU}} = 85/11.25/3.75$ and e) $W_{\text{THF}}/W_{\text{PLGA}}/W_{\text{IBU}} = 85/10/5$.

Abbreviations: DSC, differential scanning calorimetry; IBU, ibuprofen; PLGA, poly(lactic-co-glycolic acid).

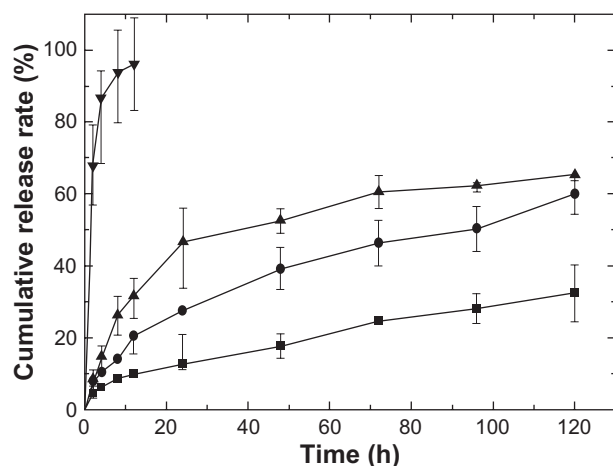


Figure 5 Cumulative release of different samples in pH 6.8 phosphate buffered solution, films with ratios of $W_{\text{THF}}/W_{\text{PLGA}}/W_{\text{IBU}} = 85/12.5/2.5$ (-■-), $W_{\text{THF}}/W_{\text{PLGA}}/W_{\text{IBU}} = 85/11.25/3.75$ (-●-), $W_{\text{THF}}/W_{\text{PLGA}}/W_{\text{IBU}} = 85/10/5$ (-▲-) and pure IBU (-▼-). **Abbreviation:** IBU, ibuprofen.

with a release amount of nearly 100% in 12 hours. In contrast, in the sample with a ratio of $W_{\text{THF}}/W_{\text{PLGA}}/W_{\text{IBU}} = 85/12.5/2.5$, the release reached $12.7\% \pm 1.5\%$ within 24 hours, and reached $32.4\% \pm 7.8\%$ in 120 hours. In the sample with a ratio of $W_{\text{THF}}/W_{\text{PLGA}}/W_{\text{IBU}} = 85/11.25/3.75$, the release rate reached $27.5\% \pm 6.4\%$ in 24 hours and $60\% \pm 5.5\%$ in 120 hours. However, the release reached $46.6\% \pm 9.5\%$ in 24 hours and $65.3\% \pm 1.6\%$ in 120 hours in the sample with a ratio of $W_{\text{THF}}/W_{\text{PLGA}}/W_{\text{IBU}} = 85/10/5$. The different release percentages over the same time, show that the release rate decreases as the drug loading decreases. This can be due to the fewer drug molecules diffusing through the polymer network with the decrease of the drug loading. The polymer network becomes more porous as the drug concentration decreases, so that the soluble IBU molecules have to travel a longer distance from the pores to the release medium. The burst effect is not observed in the release, which can be explained as follows. On the one hand, the IBU is distributed homogeneously in the polymer without much surface segregation. On the other hand, rinsing the film decreases the amount of drug associated on the surface. These results show that a more controlled release can be obtained when changing the weight ratio of the drug, which indicates the potential application of the as-prepared drug-loaded PLGA products in a drug controlled delivery system.

In order to better understand the importance of the release mediums on the drug release kinetics from PLGA-based films, the other two release mediums were chosen to mimic the in vitro release. Figure 6 shows the release profiles of the sample with $W_{\text{THF}}/W_{\text{PLGA}}/W_{\text{IBU}} = 85/12.5/2.5$ from the release mediums, HCl aqueous solution (pH 1.2) and PBS (pH 7.4).

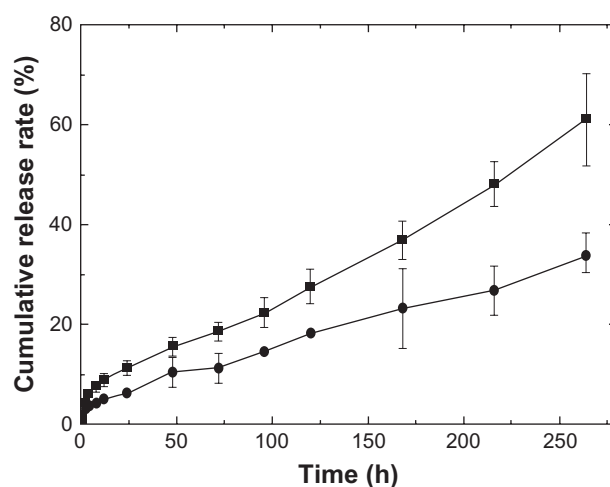


Figure 6 Cumulative release of the sample with $W_{\text{THF}}/W_{\text{PLGA}}/W_{\text{IBU}} = 85/12.5/2.5$ in different release mediums, pH 7.4 phosphate buffered solution (-■-) and pH 1.2 HCl aqueous solution (-●-).

The time to reach 30% of drug release in PBS was 135 hours compared with 238 hours in HCl aqueous solution, which reveals that the drug release kinetic is faster at high pH than at low pH. The decreased release rate of IBU in acidic media (pH 1.2) may have been due to the decreased solubility of IBU. The pK_a of IBU is known to be 4.42 and thus it has low aqueous solubility when the pH of the medium is below or close to 4.42. What is more, matrix erosion which is affected by medium pH is also expected to affect the drug release. It is known that PLGA hydrolysis is equilibrium-limited in acidic environments, while it is not limited by equilibrium in basic conditions. Thus the erosion of the matrix increases when the pH of the release medium increases.

Drug release kinetics

The kinetics of IBU release from the films are determined by fitting the curves to distinct models, Zero order, First order, Higuchi release model, Ritger-Peppas, and Biexponential model. The equations for the different models and the regression coefficient (R) are given in Table 2 and the best-fit model is selected on the basis of R .

For the sample $W_{\text{THF}}/W_{\text{PLGA}}/W_{\text{IBU}} = 85/12.5/2.5$ in pH 7.4 PBS and $W_{\text{THF}}/W_{\text{PLGA}}/W_{\text{IBU}} = 85/10/5$ in pH 6.8 PBS, we observe that R value is larger when fitted to a biexponential equation compared with other equations, which indicates a biexponential release from the PLGA-based films. The R value is higher when the samples ($W_{\text{THF}}/W_{\text{PLGA}}/W_{\text{IBU}} = 85/12.5/2.5$ and $W_{\text{THF}}/W_{\text{PLGA}}/W_{\text{IBU}} = 85/11.25/3.75$) are fitted to the Ritger-Peppas kinetics equation in the pH 6.8 release medium, which indicates a Ritger-Peppas release from the PLGA matrix. When the sample ($W_{\text{THF}}/W_{\text{PLGA}}/W_{\text{IBU}} = 85/12.5/2.5$)

Table 2 The equations for the different models and the regression coefficient (*R*) of IBU-loaded PLGA films in vitro

Samples	Model	Equation	R
$W_{\text{THF}}/W_{\text{PLGA}}/W_{\text{IBU}} = 85/12.5/2.5$, pH = 1.2	Zero-order kinetics	$Q = 0.1201 t + 3.0237$	0.9972
	First-order kinetics	$\ln(100 - Q) = -0.0014 t + 4.5786$	0.9970
	Higuchi	$Q = 1.6027 t^{1/2} - 1.3078$	0.9085
	Ritger-Peppas	$\ln Q = 0.4062 \ln t + 0.6594$	0.9528
	Biexponential	$100 - Q = 97.839e^{-0.1052t} + 104e^{-0.139t}$	$R_{\alpha} = 0.9340$ $R_{\beta} = 0.9690$
$W_{\text{THF}}/W_{\text{PLGA}}/W_{\text{IBU}} = 85/12.5/2.5$, pH = 7.4	Zero-order kinetics	$Q = 0.2057 t + 4.2613$	0.9956
	First-order kinetics	$\ln(100 - Q) = -0.003 t + 4.5832$	0.9830
	Higuchi	$Q = 3.2695 t^{1/2} - 3.0312$	0.9654
	Ritger-Peppas	$\ln Q = 0.5008 \ln t + 0.9880$	0.9894
	Biexponential	$100 - Q = 98.283e^{-1.0574t} + 94.796e^{-0.2002t}$	$R_{\alpha} = 0.9834$ $R_{\beta} = 0.9957$
$W_{\text{THF}}/W_{\text{PLGA}}/W_{\text{IBU}} = 85/12.5/2.5$, pH = 6.8	Zero-order kinetics	$Q = 0.2281 t + 6.3468$	0.9920
	First-order kinetics	$\ln(100 - Q) = -0.0028 t + 4.5497$	0.9953
	Higuchi	$Q = 2.8396 t^{1/2} + 0.1087$	0.9948
	Ritger-Peppas	$\ln Q = 0.4659 \ln t + 1.1722$	0.9955
	Biexponential	$100 - Q = 96.181e^{-0.5508t} + 91.87e^{-0.2075t}$	$R_{\alpha} = 0.9857$ $R_{\beta} = 0.9945$
$W_{\text{THF}}/W_{\text{PLGA}}/W_{\text{IBU}} = 85/11.25/3.75$, pH = 6.8	Zero-order kinetics	$Q = 0.4216 t + 12.675$	0.9736
	First-order kinetics	$\ln(100 - Q) = -0.0067 t + 4.4868$	0.9896
	Higuchi equation	$Q = 5.3614 t^{1/2} + 0.5101$	0.9953
	Ritger-Peppas	$\ln Q = 0.4993 \ln t + 1.6995$	0.9973
	Biexponential	$100 - Q = 93.85e^{-1.0107t} + 80.762e^{-0.3462t}$	$R_{\alpha} = 0.9933$ $R_{\beta} = 0.9862$
$W_{\text{THF}}/W_{\text{PLGA}}/W_{\text{IBU}} = 85/10/5$, pH = 6.8	Zero-order kinetic	$Q = 0.235 t + 28.738$	0.9369
	First-order kinetics	$\ln(100 - Q) = -0.0052 t + 4.2746$	0.9761
	Higuchi equation	$Q = 4.4906 t^{1/2} + 13.555$	0.9801
	Ritger-Peppas	$\ln Q = 0.4194 \ln t + 2.1991$	0.9826
	Biexponential	$100 - Q = 90.346e^{-1.52t} + 50.022e^{-0.1150t}$	$R_{\alpha} = 0.9968$ $R_{\beta} = 0.9945$
Pure IBU, pH = 6.8	Zero-order kinetics	$Q = 6.4129 t + 35.624$	0.7701
	First-order kinetics	$\ln(100 - Q) = -0.2586 t + 4.1051$	0.9510

Note: Where *Q* is the fraction of drug release, *t* is the time, *R* is the regression coefficient.

is released from pH 1.2 release medium, it fits to Zero-order kinetics. As for the release of pure IBU, the *R* value is larger when fitting to First-order kinetics than Zero-order kinetics. Drug release from matrices is usually complex and though some processes may be clearly classified as either diffusion or erosion controlled, drug release is mostly governed by both mechanisms. However, the above results may provide a better understanding of the drug controlled release from the drug-loaded films.

Conclusion

In summary, a very simple, basic method was developed to fabricate drug-loaded biocompatible polymeric films by directly spreading polymer/drug solution on the nonsolvent surface. PLGA and IBU were used as the model polymer and drug, respectively. By controlling the weight ratio of

IBU and PLGA, different drug loading percentage films can be prepared. The drug release behaviors of the as-prepared products show their potential applications in a drug controlled delivery system. The release rate of IBU from these films into phosphate buffered solutions appeared to depend on a number of factors including drug loading content and the pH of the release mediums. This method can easily be scaled up and potentially extended to the fabrication of other drug-loaded composites for the application in drug delivery systems.

Acknowledgments

This work is supported by the National Natural Science Foundation of China (NSFC, No. 20803044, No. 20803043), and the Excellent Young Scientist Foundation of Shandong Province (BS2009CL002).

Disclosure

The authors declare no conflicts of interest.

References

- Perugini P, Genta I, Conti B, et al. Periodontal delivery of ipriflavone: new chitosan/PLGA film delivery system for a lipophilic drug. *Int J Pharm.* 2003;252:1–9.
- Ye M, Kim S, Park K. Issues in long-term protein delivery using biodegradable microparticles. *J Contr Release.* 2010;146:241–260.
- Schade A, Niwa T, Takeuchi H, et al. Aqueous colloidal polymer dispersions of biodegradable DL-lactide/glycolide copolymer as basis for latex films: a new approach for the development of biodegradable depot systems. *Int J Pharm.* 1995;117:209–217.
- Siegel SJ, Kahn JB, Metzger K, et al. Effect of drug type on the degradation rate of PLGA matrices. *Eur J Pharm Biopharm.* 2006;64:287–293.
- Klose D, Siepmann F, Willart JF, et al. Drug release from PLGA-based microparticles: effects of the “microparticle:bulk fluid” ratio. *Int J Pharm.* 2010;383:123–131.
- Xu Q, Czernuszka JT. Controlled release of amoxicillin from hydroxyapatite-coated poly (lactic-co-glycolic acid) microspheres. *J Contr Release.* 2008;127:146–153.
- Fernández-Carballido A, Herrero-Vanrell R, Molina-Martinez IT, et al. Biodegradable ibuprofen-loaded PLGA microspheres for intraarticular administration effect of Labrafil addition on release *in vitro*. *Int J Pharm.* 2004;279:33–41.
- Schliecker G, Schmidt C, Fuchs S, et al. Hydrolytic degradation of poly(lactide-co-glycolide) films: effect of oligomers on degradation rate and crystallinity. *Int J Pharm.* 2003;266:39–49.
- Wang J, Wang BM, Schwendeman SP. Characterization of the initial burst release of a model peptide from poly(D,L-lactide-co-glycolide) microspheres. *J Contr Release.* 2002;82:289–307.
- Acharya G, Shin CS, Vedantham K, et al. A study of drug release from homogeneous PLGA microstructures. *J Contr Release.* 2010;146:201–206.
- Jackson JK, Smith J, Letchford K, et al. Characterization of perivascular poly (lactic-co-glycolic acid) films containing paclitaxel. *Int J Pharm.* 2004;283:97–109.
- Dorta MJ, Oliva A, Munguia O, et al. In-vivo release of fluoropyrimidines from PLGA film implants. *J Pharm Pharmacol.* 2002;54:757–763.
- Dorta MJ, Santovena A, Llabres M, et al. Potential applications of PLGA film-implants in modulating *in vitro* drugs release. *Int J Pharm.* 2002;24:149–156.
- Ma D, McHugh AJ. The interplay of membrane formation and drug release in solution-cast films of polylactide polymers. *Int J Pharm.* 2010;388:1–12.
- Knill CJ, Mistry J, Smart G, Grocock MR, Williams HJ, Kennedy JF. Alginate fibres modified with unhydrolysed and hydrolysed chitosans for wound dressings. *Carbohydr Polym.* 2004;55:65–76.
- Shi SA, Wang XH, Guo G, Fan M, Huang MJ, Qian ZY. Preparation and characterization of microporous poly(D,L-lactic acid) film for tissue engineering scaffold. *Int J Nanomed.* 2010;5:1049–1055.
- Jiang BB, Li BY. Tunable drug loading and release from polypeptide multilayer nanofilms. *Int J Nanomed.* 2009;4:37–53.
- Patel NA, Patel NJ, Patel RP. Design and evaluation of transdermal drug delivery system for curcumin as an anti-inflammatory drug. *Drug Dev Ind Pharm.* 2009;35:234–242.
- Moneghini M, Bellich B, Baxa P, et al. Microwave generated solid dispersions containing Ibuprofen. *Int J Pharm.* 2008;361:125.
- Pang J, Luan Y, Li F, et al. Ionic liquid-assisted synthesis of silica particles and their application in drug release. *Mater Lett.* 2010;64:2509–2512.
- Newa M, Bhandari KH, Li DX, et al. Preparation, characterization and *in vivo* evaluation of ibuprofen binary solid dispersions with poloxamer 188. *Int J Pharm.* 2007;343:228–237.
- Jain JA. The manufacturing techniques of various drug loaded biodegradable poly (lactide-co-glycolide) (PLGA) devices. *Biomaterials.* 2000;21:2475–2490.
- Wang Y, Liu Z, Han B, et al. A simple route to micropatterned polymer surfaces. *Chem Commun.* 2004;800–801.
- Tang Y, Singh J. Controlled delivery of aspirin: effect of aspirin on polymer degradation and *in vitro* release from PLGA based phase sensitive systems. *Int J Pharm.* 2008;357:119–125.
- Zhou S, Deng X, Li X, Jia W, Liu L. Synthesis and characterization of biodegradable low molecular weight aliphatic polyesters and their use in protein-delivery systems. *J Appl Polym Sci.* 2004;91:1848–1856.
- Ferronato K, Bruxel F, Araujo FA, Teixeira HF, Koester LS. Use of the dialysis bag method to evaluate the *in vitro* release of drugs from submicrometric carriers. *Lat Am J Pharm.* 2010;29:313–320.
- Luo YF, Chen DW, Ren LX, Zhao XL, Qin J. Solid lipid nanoparticles for enhancing vinpocetine’s oral bioavailability. *J Contr Release.* 2006;114:53–59.
- Garekani HA, Sadeghi F, Badiee A, Mostafa SA, Rajabi-Siahboomi AR. Crystal habit modifications of ibuprofen and their physicochemical characteristics. *Drug Dev Ind Pharm.* 2001;27:803–809.

International Journal of Nanomedicine

Publish your work in this journal

The International Journal of Nanomedicine is an international, peer-reviewed journal focusing on the application of nanotechnology in diagnostics, therapeutics, and drug delivery systems throughout the biomedical field. This journal is indexed on PubMed Central, MedLine, CAS, SciSearch®, Current Contents®/Clinical Medicine,

Submit your manuscript here: <http://www.dovepress.com/international-journal-of-nanomedicine-journal>

Dovepress

Journal Citation Reports/Science Edition, EMBase, Scopus and the Elsevier Bibliographic databases. The manuscript management system is completely online and includes a very quick and fair peer-review system, which is all easy to use. Visit <http://www.dovepress.com/testimonials.php> to read real quotes from published authors.