

# The Role and Mechanism of Autophagy in Pancreatic Cancer: An Update Review

Jian Ma<sup>1-3</sup>  
Huan Xue<sup>1-3</sup>  
Li-Hong He<sup>1-3</sup>  
Ling-Yun Wang<sup>1-3</sup>  
Xiao-Juan Wang<sup>1-3</sup>  
Xun Li<sup>1-3</sup>  
Lei Zhang<sup>1-3</sup>

<sup>1</sup>Department of General Surgery, The First Hospital of Lanzhou University, Lanzhou, Gansu Province, 730000, People's Republic of China; <sup>2</sup>Key Laboratory of Biological Therapy and Regenerative Medicine Transformation Gansu Province, Lanzhou, Gansu Province, 730000, People's Republic of China; <sup>3</sup>The First Clinical Medical College, Lanzhou University, Lanzhou, Gansu Province, 730000, People's Republic of China

Correspondence: Xun Li  
Department of General Surgery, The First Hospital of Lanzhou University, I Donggang West Road, Chengguan District, Lanzhou, Gansu Province, 730000, People's Republic of China  
Tel +86 13993138612  
Email lxdr21@126.com

Lei Zhang  
Department of General Surgery, The First Hospital of Lanzhou University, I Donggang West Road, Chengguan District, Lanzhou, Gansu Province, 730000, People's Republic of China  
Tel +86 13993181644  
Email 13993181644@139.com

**Abstract:** Pancreatic cancer, with high morbidity and mortality rates, is one of the most malignant tumors worldwide. Despite extensive research, the prognosis remains poor. Autophagy, a lysosomal-mediated, highly conserved degradation process that removes abnormal proteins and damaged organelles from the body, is upregulated in pancreatic ductal adenocarcinoma. Based on differences in the tumor microenvironment and tumor stage, the functions of autophagy in the pathophysiology and treatment of pancreatic cancer differ. In the initial phase, autophagy inhibits the transformation of precancerous lesions to cancer. However, in the progressive stage, autophagy promotes tumor growth. Autophagy is also one of the main mechanisms of drug resistance during treatment. Here, we describe the role of autophagy in pancreatic cancer progression and discuss relevant treatment strategies for this disease.

**Keywords:** pancreatic ductal adenocarcinoma, cell growth, migration, tumor microenvironment, therapy

## Introduction

Pancreatic ductal adenocarcinoma (PDAC) originates from malignant pancreatic acinar epithelial cells and is the most common pancreatic cancer. Globally, PDAC is the twelfth most common malignant tumor and the seventh leading cause of cancer-related deaths, with a 5-year survival rate of only 9%.<sup>1</sup> PDAC metastasizes early and progresses rapidly; symptoms are irregular. PDAC is typically diagnosed during middle or late-stage cancer. Thus, most patients have lost the chance of surgical resection, making chemotherapy the main treatment for PDAC. However, frequent drug resistance of tumor cells makes late chemotherapy less effective than early chemotherapy.<sup>2</sup> The oncogene, KRAS, and tumor suppressor gene, TP53, are the most frequently altered genes in PDAC patients. Despite numerous studies on the therapeutic effects of inhibitors of the KRAS pathway, the results are not satisfactory. Therefore, it is necessary to further study targeted treatment of PDAC.

Autophagy is one mechanism of resistance in tumor therapy. It can promote cell survival in harsh environments, though unregulated autophagy can promote apoptosis.<sup>4</sup> There are three types of autophagy: macroautophagy, chaperone-mediated autophagy, and microautophagy.<sup>3</sup> Macroautophagy (hereafter referred to as autophagy) is the main autophagy process that is activated during cell nutrient insufficiency and hypoxia where it provides cells with metabolites after the encapsulated cargo is degraded.

Autophagy plays a complex role in tumor cells; studies have shown that autophagy can both inhibit cancer onset and promote advanced tumor growth.<sup>4</sup> Increasing evidence shows that cancer cells are more dependent on autophagy than normal cells, and this dependence may be further strengthened during the treatment process.<sup>5</sup> An increasing number of research groups are examining autophagy as a target for cancer treatment.

In this review, we introduce autophagy and focus on its role in the onset, development, and treatment of pancreatic cancer. Research on autophagy is developing rapidly, and the knowledge we have gained is not only helpful for us to understand the basic molecular mechanism of autophagy, but also can provide a basis for clinical decision-making of targeted therapy related to autophagy.

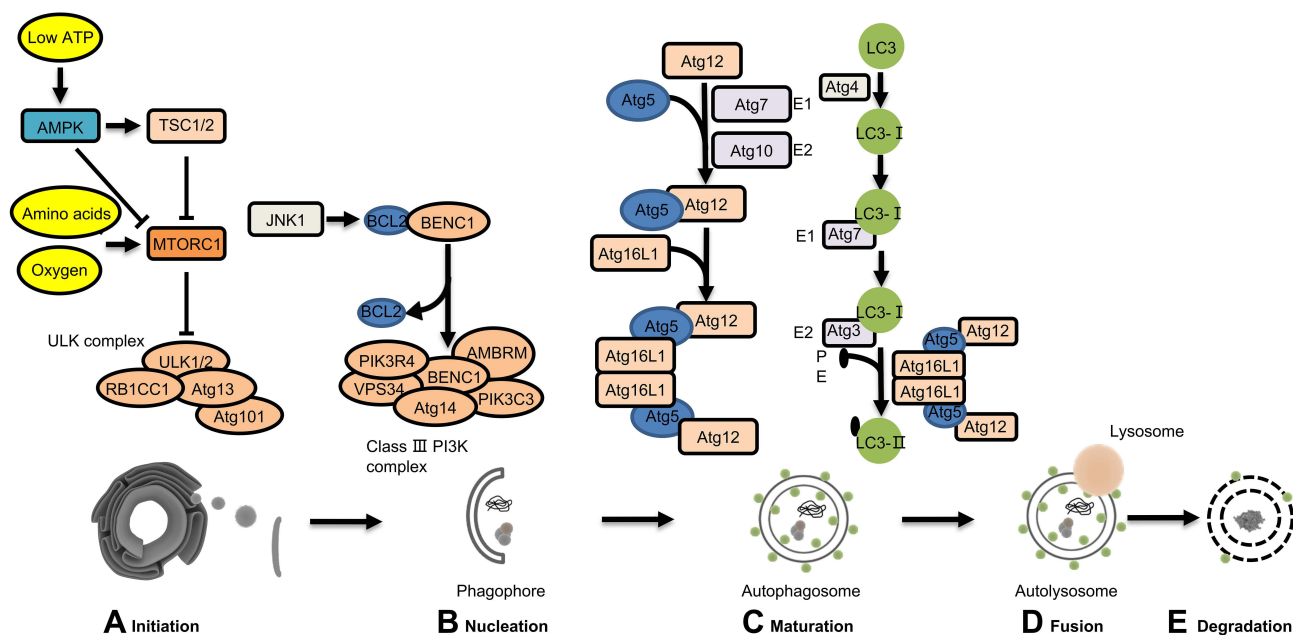
## Process of Autophagy

Autophagy is a highly conserved cell stress response. Dr. Yoshinori Ohsumi discovered the mechanisms that regulate autophagy using yeast.<sup>6</sup> Five events initiate autophagy (Figure 1): (1) initiation, (2) double-membrane

nucleation and phagophore formation, (3) elongation of phagophores and encapsulation of cytoplasmic degradation targets, (4) autophagosome fusion with lysosomes to form the autolysosome, and (5) degradation of the autolysosome cargo.<sup>7</sup>

The mammalian target of rapamycin (mTORC1) is a serine-threonine kinase responsible for transducing autophagy signals;<sup>8</sup> mTORC1 binds and phosphorylates Unc-51-like kinase 1 (ULK1). When a cell is deprived of amino acids, ULK1 is dephosphorylated and initiates autophagy; under low ATP conditions, AMP-activated protein kinase (AMPK) promotes autophagy.<sup>8</sup> In addition, suppressed mTORC1 or activated AMPK can transduce the downstream pre-initiation complex ULK1/2-Atg13-FIP200-Atg101, which initiates autophagy.<sup>9</sup>

The class III phosphatidylinositol 3-kinase (PtdIns3K) complex nucleates autophagosomes; the complex includes phosphatidylinositol 3-kinase catalytic subunit type 3 (PIK3C3), phosphoinositide 3-kinase regulatory subunit 4 (PIK3R4), vesicular protein sorting 34 (VPS34), activating molecule in Beclin1-regulated autophagy protein 1



**Figure 1** Regulation of autophagy signaling pathways. Autophagy is a complex degradation process involving the following key steps: (A) initiation; (B) nucleation; (C) maturation; (D) fusion; (E) degradation. During initiation, low ATP, hypoxia, and amino acid deficiency lead to AMPK activation or mTOR inhibition, and the ULK complex forms. The ER membrane breaks off to form phagophores. In the starvation state, JNK1-mediated phosphorylation of BCL2 is blocked, BECN1 separates from BCL2 to form the Class III PI3K complex. BECN1 in the Class III PI3K complex interacts with the ER and participates in double-membrane nucleation to form a phagophore, which contains abnormal proteins and damaged organelles. ATG5 is conjugated with ATG12 and forms a complex with ATG16L, which is involved in phagophore elongation. After LC3 processing, it is inserted into the extended phagophore to form a mature autophagosome. Then, the autophagosome fuses with a lysosome to form the autolysosome and degrades the contents.

**Abbreviations:** AMPK, AMP-activated protein kinase; ATG, autophagy related; TSC1/2, tuberous sclerosis complex subunit 1/2; mTORC1, mechanistic target of rapamycin complex 1; RB1CC1, retinoblastoma 1 coiled coil; BCL2, B-cell lymphoma 2; BECN1, Beclin1; AMBRA1, activating molecule in Beclin1-regulated autophagy; ER, endoplasmic reticulum; JNK1, c-Jun N-terminal kinase 1; VPS34, vesicular protein sorting 34; PIK3R4, phosphatidylinositol 3-kinase regulatory subunit 4; PIK3C3, phosphoinositide 3-kinase catalytic subunit 3; ULK, unc-51-like autophagy activating kinase 1.

(AMBRA1), Beclin1 (BECN1), and ATG14. BECN1 regulates PtdIns3K complex formation during phagophore assembly. B-cell lymphoma 2 (BCL2) prevents BECN1 from binding to VPS34 and inhibits autophagy. During the cell starvation state, JNK1-mediated phosphorylation of BCL2 is inhibited, and autophagy is promoted.<sup>10</sup> VPS34 combined with BECN1 phosphorylates phosphatidylinositol (PI) to phosphatidylinositol 3-phosphate (PI3P).<sup>11</sup> PI3P recruits other ATG proteins and elongates the phagophore. The phagophore disassembles if any of these processes are inhibited, preventing autophagy.

Two ubiquitin-like (UBL) systems regulate phagophore elongation: Atg12-Atg5 UBL and microtubule-associated light-chain 3 B (LC3B)-phosphatidylethanolamine (PE) UBL<sup>12</sup> by E1-E2-E3 tertiary enzyme chain reaction.<sup>8</sup> The E1-like enzyme Atg7 and the E2-like enzyme Atg10 form a covalent bond between Atg12 and Atg5. The Atg12-Atg5 conjugate recruits Atg16L1 to form a complex-Atg12-Atg5-Atg16L1, which functions as E3-like enzymes for LC3B-PE UBLs. LC3 is cleaved by the cysteine protease ATG4B to generate LC3B-I. LC3B-I then conjugates with the glycine residue on PE. A diffuse form of LC3-I is converted into the lipidated form LC3-II by the E1-like enzyme ATG7 and the E2-like enzyme ATG3.

LC3-II inserted into the phagophore lengthens the membrane and forms a bilayer structure in the autophagosome. LC3 is found on both the inner and outer autophagosome surface membrane and is recruited into the phagophore by Atg5-Atg12.<sup>10</sup>

Rab7 is a member of the Ras-related protein in the brain (Rab) family.<sup>13</sup> Rab7 and the homotypic fusion and protein sorting (HOPS)/vacuole protein sorting class C (Vps class C) complex interact to mediate membrane binding and fusion.<sup>14</sup> In addition, the pleckstrin homology domain-containing family M member 1 (PLEKHM1), RAB7 effector, also binds to components of the HOPS complex. PLEKHM1 interacts with LC3 /GABARAP family proteins, which regulate the fusion of autophagosomes and lysosomes.<sup>15</sup> After the autolysosome forms, it degrades the materials isolated inside,<sup>16</sup> providing cells with nutrients to maintain homeostasis. However, the role of autophagy in PDAC remains to be further elucidated.

## PDAC and Autophagy

Histological and cytological studies have shown that autophagy increases when the pancreas is afflicted with intravascular pancreatic neoplasia (PanIN).<sup>17</sup> In addition,

PDAC cells have been shown to rely on autophagy to obtain nutrients and energy to survive in vitro.<sup>18</sup> Here, we review the role of autophagy in the onset, development, and treatment of PDAC.

## Role of Autophagy in the Onset of PDAC

PDAC is induced by various factors, including inflammation, gene mutations, and impaired mitochondrial function. Here, we review the role of autophagy in the onset of PDAC.

Autophagy regulates inflammation during PDAC pathogenesis. Studies have shown that knockout of autophagy-related genes (ATG5 or ATG7) or proteins encoding lysosomal function LAMP2 leads to severe acinar cell degeneration, pancreatic atrophy, fibrosis, and inflammation.<sup>19</sup> ATG7-deficient mice were found to have decreased autophagic flux, increased endoplasmic reticulum stress, pancreatic cell degeneration, and acinar-ductal metaplasia (ADM) formation compared to the control.<sup>20</sup> ADM is a precursor to pancreatic intraepithelial neoplasia (PanIN), a common precancerous lesion of PDAC.<sup>21</sup> This indicates that autophagy inhibition increases a patient's susceptibility to PDAC.

Mutations in the Kirsten rat sarcoma virus oncogene are a major cause of PDAC.<sup>22</sup> When the oncogene KRAS is activated, the metabolic demands of pancreatic cells increase. Overexpressed vacuolar membrane protein 1 (VMP1) interacts with BECN1 and promotes pancreatic cell autophagy to provide nutrients for cell metabolism.<sup>23</sup> Administering chloroquine, an autophagy inhibitor, was found to effectively reverse VMP1 overexpression and induce PanIN formation in *Pdx1-Cre; Kras<sup>G12D</sup>; vmp1* mice.<sup>23</sup>

Moreover, 75% of human PDAC cells have P53 deletions.<sup>22</sup> Rosenfeldt et al<sup>24</sup> found that in KRAS mutation-driven PDAC cells, autophagy had both tumor-promoting and tumor-inhibiting effects, depending on the presence of the P53 gene. They also found that KARS mice lacking ATG5 or ATG7 developed low-grade malignant peripancreatic lesions, which did not progress to high-grade malignant PanIN and PDAC. Conversely, in mice with carcinogenic KRAS and P53 deletion, PDAC pathogenesis was accelerated. However, Yang et al<sup>25</sup> proved that chloroquine treatment or RNAi inhibition of autophagy inhibited PDAC cell growth, independent of P53.

The different results may be related to Rosenfeldt's use of the P53 homozygous deletion model. The pancreas in these mice develop without functional P53, which is

different from the gradual progression from PanIN to PDAC in other models and humans. In human PDAC cells, there is typically only one deletion of the P53 allele. Moreover, inhibiting autophagy prevents oncogenic KRAS mutations from progressing to PDAC.<sup>25</sup> Thus, according to the above studies, manipulating autophagy to treat PDAC may depend on the KRAS oncogene status.

PDAC cells feature increased mitochondrial destruction compared with normal cells.<sup>26</sup> It is essential for cell homeostasis to maintain healthy mitochondria, including quantity and quality. Therefore, mitochondrial autophagy is increased in PDAC cells and it selectively degrades damaged mitochondria. Mitochondrial autophagy is regulated by PTEN-induced kinase 1 (PINK1), Parkin RBR E3 ubiquitin-protein ligase (PRKN/PARK2), and BCL2 interacting protein 3 (BNIP3L/NIX).<sup>26</sup> Xie et al showed that PINK1/ PRKN deficiency accelerates the onset of PDAC.<sup>26</sup> However, KRAS-mediated BNIP3L overexpression can increase the cell's glucose metabolism and antioxidant capacity, promoting PDAC onset (Figure 2).<sup>26</sup>

In conclusion, autophagy can inhibit PDAC pathogenesis, but can provide energy for cells, promoting PDAC

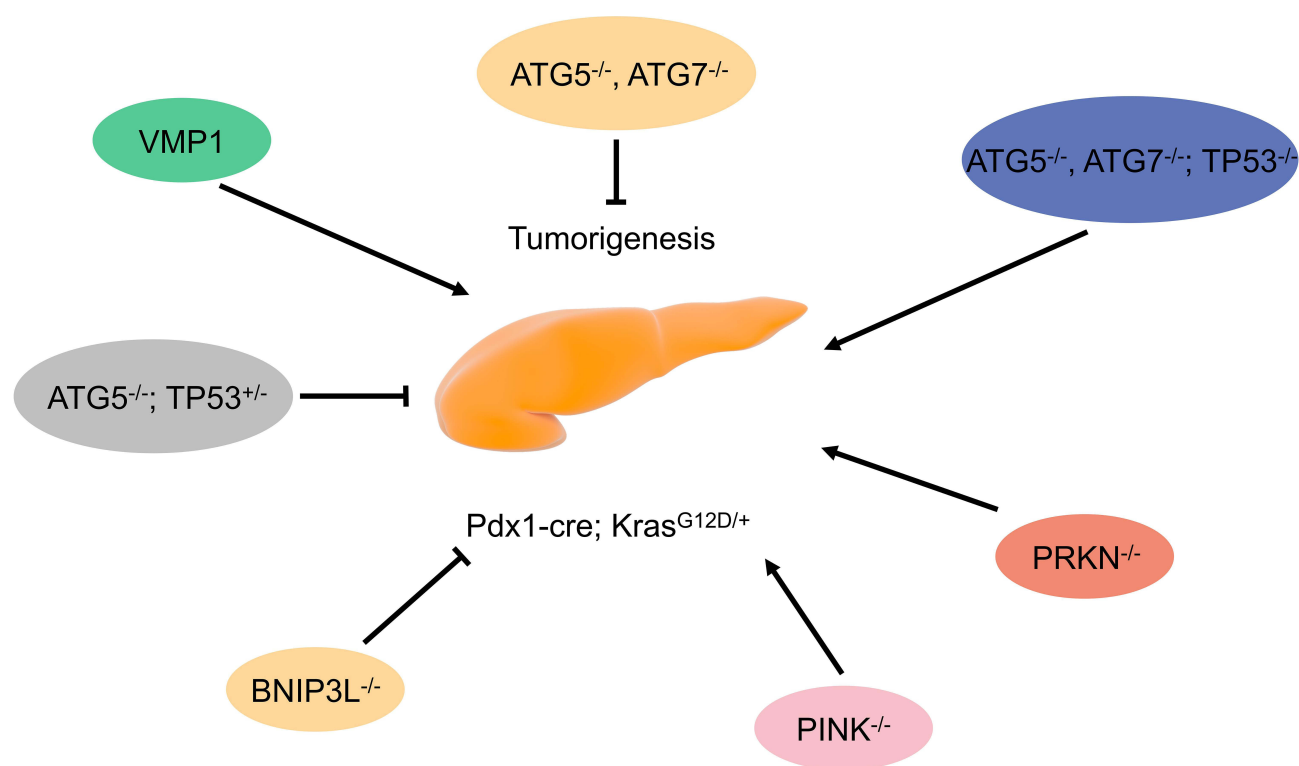
onset when pancreatic cells have carcinogenic KRAS mutations.

## Role of Autophagy in the Development of PDAC

Autophagy promotes pathogenesis by regulating cell proliferation, invasion, migration, metabolism, and immune escape. Studies have shown that the use of autophagy inhibitor chloroquine, or *ATG5* and *ATG7* inhibition by shRNA can inhibit human PDAC cell line growth and reduce tumor mass in PDAC mouse models.<sup>17</sup> We discuss the complex regulatory network of autophagy and its role in PDAC development in the subsequent sections.

### Autophagy and Activation of Pancreatic Stellate Cells

An important feature of PDAC is that fibrosis of the extracellular matrix increases as PDAC progresses,<sup>27</sup> leading to low tumor vascular density, severe hypoxia, and limited access to nutrients. As a result, cancer cells activate pancreatic stellate cells (PSCs), increase the expression of autophagic proteins, and secrete non-essential amino acids (NEAA), such as alanine, to meet the



**Figure 2** Role of autophagy regulatory factors in pancreatic tumorigenesis in mice with mutant KRAS.

**Abbreviations:** ATG, autophagy related; VMP1, vacuolar membrane protein 1; BNIP3L, BCL2 interacting protein 3 like; PINK, PTEN induced kinase 1; PRKN, parkin RBR E3 ubiquitin protein ligase; TP53, tumor protein p53.

metabolic needs of growing cancer cells.<sup>27</sup> In addition, increased autophagy causes the PSCs to change from a dormant state to an active state. Activated PSCs secrete extracellular matrix (ECM) proteins and cytokines to increase the aggressiveness of tumors,<sup>28</sup> closely correlated to PDAC patients' short survival time. Administering autophagy inhibitors to PSCs reduced ECM protein and cytokine production and decreased the proliferation and invasiveness of PDAC cells in mice.<sup>28</sup> This suggests that autophagy can promote PDAC progression by regulating non-tumor cells.

### Autophagy and Cell Proliferation, Invasion, and Metastasis

PDAC cells are characterized by dysregulated proliferation and the ability to invade surrounding tissues, which is a reason for poor prognosis and high mortality. Gorgulu et al<sup>29</sup> showed that in ATG5-deficient PDAC mice, tumor cell proliferation and migration increased. However, in such mice, the tumor formation was prevented. Interestingly, knockout of ATG5 in pancreatic cancer cell line increased their proliferation and migration. In human PDAC samples, lower ATG5 expression levels are associated with tumor migration and shorter patient survival times. This suggests that the expression level of ATG5 should be considered when using autophagy inhibitors to treat PDAC, so as to avoid the occurrence of drug resistance.

Transforming growth factor- $\beta$  (TGF- $\beta$ ) promotes proliferation, invasion, and migration in late stage tumors.<sup>30</sup> He et al<sup>30</sup> found that TGF- $\beta$  can influence TFEB expression in SMAD4-positive PDAC cells, thereby promoting TFEB-mediated autophagy. The increase in TFEB-mediated autophagy was negatively correlated with prognosis in patients with PDAC. Chen et al<sup>31</sup> found that TGF- $\beta$  induced autophagy effects on PDAC proliferation and invasiveness, dependent on SMAD4 expression. TGF- $\beta$ -induced autophagy enhanced SMAD4-negative PDAC cell migration and inhibited cell growth, while the opposite effect was observed in SMAD4-positive PDAC cells. This suggests that different genetic backgrounds may differentially affect autophagy in PDAC.

Ubiquitin-like protein 4A (UBL4A) can act on lysosomal-associated membrane protein 1 (LAMP1) to inhibit autophagy and thus inhibit PDAC cell proliferation and metastasis.<sup>32</sup> High UBL4A expression in PDAC is associated with good prognosis and prolonged patient survival.<sup>33</sup> The RNA-binding protein QKI can activate

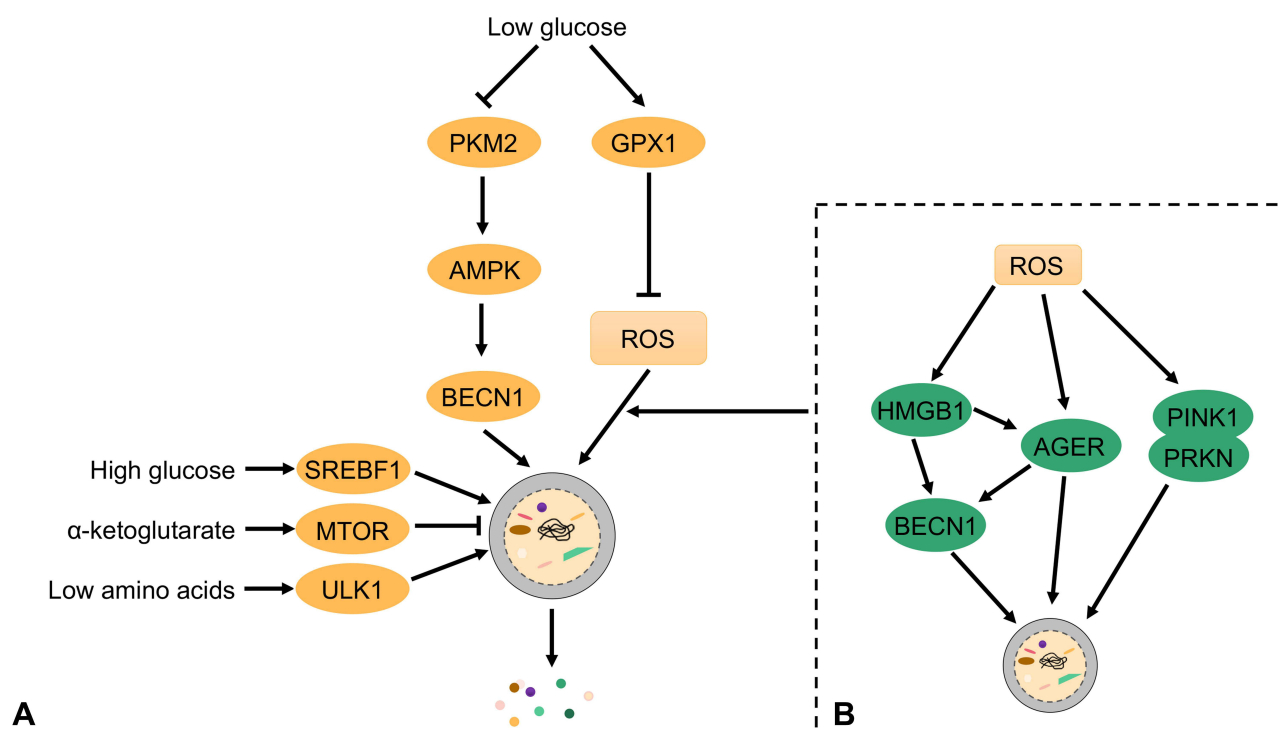
surrounding fibroblasts to proliferate, invade, and metastasize, increasing autophagy in PDAC cells.<sup>33</sup> In addition, MAPK can affect the interaction between PDAC and stroma and induce autophagy to increase PDAC cell proliferation, invasion, and migration.<sup>34</sup> These results suggest that cell autophagy in tumor microenvironments may promote PDAC cell invasion and migration.

### Autophagy and Metabolism

Low vascular density during PDAC leads to severe hypoxia and limited nutrient utilization. Therefore, PDAC cells must alter their metabolic pathways to sustain indefinite proliferation. As mentioned above, the changes in mTORC1 activity and AMPK signal transduction enhancement increase autophagy during cell starvation. Additionally, TEFB overexpression can regulate Ras-related GTP binding D (RagD) expression, promote mTORC1 recruitment to the lysosome, and enhance tumor growth.<sup>35</sup> TFEB stabilizes lysosomes and supports the nutritional requirements of PDAC cell proliferation which is vital for sustaining tumor growth.<sup>35</sup> Thus, there is a complex relationship between autophagy and PDAC metabolism, which may be used to develop new treatments for PDAC. We focused on the regulatory mechanisms of autophagy in glucose metabolism, amino acid metabolism, and oxidative stress (Figure 3).

Glucose is an important nutrient for PDAC. Under aerobic conditions, PDAC uses aerobic glycolysis to produce lactic acid rather than oxidative phosphorylation (OXPHOS).<sup>36</sup> When PDAC cells are deprived of glucose, they produce large amounts of ROS to activate autophagy and the supply needed for growth.<sup>37</sup> In contrast, glutathione peroxidase 1 (GPX1) inhibits autophagy by reducing ROS production, sensitizing PDAC cells to hanger-induced cell death.<sup>38</sup> Although this finding indicates that GPX1 acts as an autophagy inhibitory protein in PDAC, the role of other members of the GPX family in PDAC remains unknown. Pyruvate kinase M2 (PKM2) is an important regulator of glycolysis and is downregulated in PDAC cells with low glucose levels; however, in PDAC cells with reduced glucose, low PKM2 expression upregulates AMPK $\alpha$ 1 expression and induces autophagy to promote cell survival.<sup>39</sup> Bryant et al found that KRAS and MAPK inhibition increases autophagic flux in KRAS mouse models and human PDAC cells and drives PDAC to become acutely dependent on autophagy.<sup>40,41</sup> Thus, the combined inhibition of KRAS and autophagy could play a significant role in PDAC treatment.<sup>40</sup>





**Figure 3** Autophagy maintains the metabolism and function of PDAC cells. Autophagy pathways are modulated by different metabolic conditions (eg, oxidative stress, low glucose, and low amino acids) in which cellular components are degraded. In this process, bioenergy intermediates are reused, thereby promoting cell survival.

**Abbreviations:** AGER, advanced glycosylation end-product specific receptor; AMPK, AMP-activated protein kinase; BECN1, beclin 1; GPX1, glutathione peroxidase 1; HMGB1, high mobility group box 1; mTOR, mechanistic target of rapamycin; PKM2, M2 splice isoform of PKM (pyruvate kinase M1/2); PDAC, pancreatic ductal adenocarcinoma; PINK, PTEN-induced kinase 1; PRKN, parkin RBR E3 ubiquitin protein ligase; ROS, reactive oxygen species; SREBF1, sterol regulatory element binding transcription factor 1; ULK1, unc-51-like autophagy activating kinase 1.

In PDAC cells, reprogramming energy metabolism plays an important role in cell proliferation and tumor growth. We have discussed glucose metabolism above, but more recently amino acid metabolism, particularly glutamine metabolism reprogramming in PDAC cells, has attracted a lot of research interest.

Autophagy supplies glutamine to PDAC cells through micropinocytosis.<sup>39</sup> Glutamine is broken down into ammonia and glutamic acid in the mitochondria. The latter is converted to the TCA cycle-intermediates α-ketoglutarate (α-KG) and DMKG<sup>42</sup> which promote PDAC growth. Thus, autophagy supplies glutamine to PDAC cells and promotes PDAC growth.<sup>43</sup> However, in PDAC cells, α-KG can activate mTORC1 to reduce autophagy.<sup>44</sup> When chronic mTORC1 inhibition leads to amino acid deficiency, TFEB expression is increased to activate autophagy. This suggests a dynamic balance between glutamine metabolism and autophagy to ensure the growth of PDAC cells.

The branched-chain amino acids (BCAAs) leucine, isoleucine, and valine are three essential amino acids (EAAs) that cannot be synthesized in the cell and must

be obtained from the diet.<sup>42</sup> Interestingly, leucine, which is a mTORC1 agonist, promotes PDAC growth. Solute carrier family 38 member 9 (SLC38A9) transports leucine from lysosomes into the cytoplasm. Wyant et al<sup>45</sup> found that in cells lacking SLC38A9, lysosomal leucine levels remained essentially unchanged, even though whole-cell leucine levels were reduced compared to the control. This revealed that the leucine utilization of PDAC cells depends on the interaction between autophagy and lysosomal proteolysis.

PSCs in tumor microenvironments also influence autophagy and amino acid metabolism in PDAC. PDAC cells induce PSC autophagy to supply alanine.<sup>27</sup> Alanine can be converted to pyruvate to provide a carbon source for the TCA cycle or promote lipid biosynthesis and synthesize non-essential amino acids such as serine and glycine. Thus, autophagy induced by cancer cells and PCS interaction supports the metabolic demands of PDAC cells and promotes tumor growth. In the progressive stage of PDAC, the cells are in a state of oxidative stress. Tumor cells produce a large amount of ROS which damages DNA and accelerates PDAC development.

Elevated ROS levels can inhibit mTORC1 and activate autophagy.<sup>46</sup> High mobility group box 1 (HMGB1) is a novel BECN1 binding protein expressed during autophagy.<sup>47</sup> In PDAC cells, the induction of autophagy depends on the REDOX state of HMGB1. When HMGB1 is reduced, it binds to advanced glycation end products (RAGE) receptors, induces BECN1 dependent autophagy, and promotes pancreatic tumor cell line survival.<sup>48</sup> The zinc chelator, TPEN, can disrupt the mitochondrial function of PDAC cells and cause oxidative stress. Meanwhile, TPEN inhibits lysosomal activity and inhibits autophagy, leading to PDAC cell apoptosis.<sup>49</sup> In conclusion, there is a complex relationship between oxidative stress, ROS and autophagy.

We described the complex relationship between autophagy and PDAC metabolism, and the potential for combining metabolic pathway manipulation and autophagy to treat PDAC in the future. However, the specific regulatory mechanism between PDAC autophagy and metabolism requires further study.

### Autophagy and Immune Response

Yang et al established a PDAC mouse model expressing AtG4B<sup>C47A</sup> to inhibit autophagy and found that macrophage infiltration of the tumor increased and partially mediated tumor regression.<sup>50</sup> This suggests that autophagy is an immune response by the PDAC cells. Furthermore, in PDAC cells, the major histocompatibility complex class I (MHC-1) can present endogenous antigens to CD8<sup>+</sup> T cells to identify cancer cells for destruction.<sup>51</sup>

Interestingly, PDAC cells express low levels of MHC-1 but are highly enriched in autophagy-related autophagosomes and lysosomes compared to human pancreatic ductal epithelial (HPDE) cells.<sup>52</sup> This autophagic MHC-1 degradation mediated by NBR1 was increased, and the antigenicity was significantly decreased.<sup>51</sup> This impaired antigen presentation and promoted immune evasion of the tumor. However, after autophagy inhibition, the PDAC cell MHC-1 expression was restored, which promoted CD8<sup>+</sup>T cell proliferation and activation and enhanced tumor cell cytotoxicity in vivo and in vitro.<sup>52</sup> Moreover, after inhibiting autophagy MDSCs, CD4<sup>+</sup> T cells and CD103<sup>+</sup> DCs also changed, but their specific roles in PDAC remain unclear.<sup>52</sup> Therefore, the relationship between autophagy and the immune responses of PDAC cells will be the focus of future research.

## Autophagy as a Therapeutic Target for PDAC

PDAC is difficult to cure and often recurring. Currently, the main treatment methods are surgery, chemotherapy, and radiotherapy. However, frequent drug resistance in PDAC is a major cause of poor patient treatment outcomes. This may be because autophagy helps tumor cells respond to a variety of stresses, including hypoxia, low pH, and reduced nutrient supply. Therefore, it is vital to understand the mechanism of autophagy to improve PDAC treatment.

Currently, the gold standard for PDAC chemotherapy combines FOLFIRINOX and nab-paclitaxel with gemcitabine.<sup>53</sup> Some studies have found that increased autophagy may be responsible for developing resistance to chemotherapeutic drugs. Gemcitabine and 5-fluorouracil induce apoptosis and increase autophagy.<sup>54,55</sup> Combining chloroquine and gemcitabine or 5-fluorouracil can significantly inhibit tumor growth.<sup>55</sup> Meanwhile, AMPK inhibition can enhance the toxicity of gemcitabine or 5-fluorouracil toxicity to the tumor.<sup>54</sup> Clinical studies have also shown that administering gemcitabine combined with hydroxy-chloroquine is more effective than gemcitabine alone.<sup>56</sup>

SMAD4 gene depletion induces autophagy by increasing ROS levels.<sup>57</sup> SMAD4-depleted PDAC cells were resistant to radiotherapy and this resistance was found to be reversed by administering autophagy inhibitors.<sup>57</sup> This suggests that autophagy plays a role in the resistance of PDAC cells to radiotherapy.

In a recent study, inhibiting KRAS-RAF-MEK-ERK signal transduction increased autophagy.<sup>40</sup> After ERK inhibition, tumor cells were increasingly dependent on autophagy for nutrients. Furthermore, PDAC development in vivo and in vitro was demonstrably affected after administering a combination of an ERK inhibitor trametinib and chloroquine.<sup>40</sup> In pancreatic cancer cell lines, the death rate in cells was found to increase by administering a combination of trametinib and chloroquine, compared with chloroquine alone. After administering this treatment protocol, the graft in MIA-PaCa2 xenograft mice had regressed and a patient with metastatic pancreatic cancer who had failed to respond to all standard treatment protocol had a reduction in tumor marker cancer antigen 19-9 (CA19-9) and overall tumor burden.<sup>58</sup> These results provide evidence for a new combination regimen to treat PDAC, suggesting that autophagy plays an important role in treating pancreatic cancer.

Autophagy plays an important role in the success of PDAC treatment. The preclinical study of targeted autophagy treatment of PDAC has achieved gratifying results. However, results in clinical studies have been disappointing. Therefore, maximizing the effect of autophagy in the treatment of pancreatic cancer patients is a challenge for future research.

## Conclusion

The understanding of autophagy's regulatory mechanisms has deepened over the past decade with the discovery of new regulatory networks and transduction pathways. The pathophysiological role of autophagy in cancer, specifically pancreatic cancer, has also been explored. Changes in autophagy play an important role in the onset and development of pancreatic cancer. This is not only reflected in cancer cells but also in non-cancer cells in the tumor microenvironment. Moreover, autophagy functions in PDAC are regulated by oncogenes (eg, KRAS) and tumor suppressor genes (eg, TP53).

Autophagy plays a complex role in cancer, and our current knowledge remains very limited. Benign lesions in autophagy defective mice are prevented from transforming into pancreatic cancer. Because autophagy provides nutrients for pancreatic cancer growth, this finding in autophagy defective mice suggests that the autophagy process can be an effective intervention target to prevent and treat pancreatic cancer.

Targeted autophagy therapy for pancreatic cancer has achieved great success in preclinical studies, but its clinical application in humans has yielded disappointing results. This discrepancy may be due to the following. First, our understanding of the specific role of autophagy at the molecular level and how it affects tumors is currently very limited. Second, mouse models do not accurately replicate human pancreatic cancer pathology. Finally, autophagy is essential for cell homeostasis, and the systematic application of autophagy inhibitors may interfere with its normal function in tissues.

Autophagy is thought to be a mechanism by which tumor cells maintain their high metabolic level in a nutrient-poor environment. Autophagy also helps tumor cells cope with multiple stresses (ie, hypoxia, low pH, and reduced nutrient supply). Inhibition of autophagy may be an important direction of targeted therapy for pancreatic cancer in the future, and the development and use of autophagy inhibitors should be a priority. In particular, designing such autophagy inhibitors that do not penetrate the blood-brain barrier can reduce

nerve toxicity. In addition, it is important to develop inhibitors that do not affect autophagy of non-cancerous cells around pancreatic cancer, but do affect tumor cell growth and reduce the ability of cancerous cells to metastasize.

Because genetic alterations can affect autophagy, it will be important to collect tumor or blood samples from PDAC patients prior to treatment with autophagy inhibitors to assess the dependence of pancreatic cancer cells on autophagy. Autophagy inhibition has a positive effect only when tumor changes occur. Clinically, autophagy inhibitors should be applied to patients with a definitive diagnosis of pancreatic cancer. In addition, because autophagy inhibitors are applied to the whole body, researchers should consider the long-term potential toxic effects on normal cells and tissues when developing and applying drugs. In conclusion, exploring the mechanism of autophagy inhibitors and elucidating their interactions with other anti-tumor drugs in pancreatic cancer will provide new methods and ideas for the clinical treatment of pancreatic cancer.

## Abbreviations

PDAC, pancreatic ductal adenocarcinoma; mTORC1, mammalian target of rapamycin complex 1; ULK1, Unc-51-like kinase 1; AMPK, AMP-activated protein kinase; PtdIns3K, class III phosphatidylinositol 3-kinase; PIK3C3, phosphatidylinositol 3-kinase catalytic subunit type 3; VPS34, vesicular protein sorting 34; AMBRA1, activating molecule in Beclin1-regulated autophagy protein 1; BCL2, B-cell lymphoma 2; PI3P, phosphatidylinositol 3-phosphate; UBL, two ubiquitin-like; LC3B, light-chain 3B; PE, phosphatidylethanolamine; PanIN, pancreatic neoplasia; ADM, acinar-ductal metaplasia; PSCs, pancreatic stellate cells; NEAA, non-essential amino acids; OXPHOS, oxidative phosphorylation; MHC-1, major histocompatibility complex class I; CA19-9, cancer antigen 19-9.

## Acknowledgment

We would like to thank Editage ([www.editage.cn](http://www.editage.cn)) for English language editing.

## Author Contributions

All authors made substantial contributions to conception and design, acquisition of data, or analysis and interpretation of data; took part in drafting the article or revising it critically for important intellectual content; agreed to submit to the current journal; gave final approval of the version to be published; and agree to be accountable for all aspects of the work.



## Funding

This study was supported by grants from Innovation Fund Project of Higher Education of Gansu Province (2021B-013), the National Innovation and Entrepreneurship Training Program for Undergraduate (No. 202110730198), and the Natural Science Foundation of Gansu Province (21JR7RA369).

## Disclosure

The authors report no conflicts of interest related to this work.

## References

1. Siegel RL, Miller KD, Jemal A. Cancer statistics, 2020. *CA Cancer J Clin*. 2020;70(1):7–30. doi:10.3322/caac.21590
2. Kong C, Li Y, Liu Z, et al. Targeting the Oncogene KRAS Mutant Pancreatic Cancer by Synergistic Blocking of Lysosomal Acidification and Rapid Drug Release. *Acs Nano*. 2019;13(4):4049–4063. doi:10.1021/acsnano.8b08246
3. Parzych KR, Klionsky DJ. An overview of autophagy: morphology, mechanism, and regulation. *Antioxid Redox Signal*. 2014;20(3):460–473. doi:10.1089/ars.2013.5371
4. Amaravadi R, Kimmelman AC, White E. Recent insights into the function of autophagy in cancer. *Gene Dev*. 2016;30(17):1913–1930. doi:10.1101/gad.287524.116
5. Poillet-Perez L, White E. Role of tumor and host autophagy in cancer metabolism. *Genes Dev*. 2019;33(11–12):610–619. doi:10.1101/gad.325514.119
6. Levine B, Klionsky DJ. Autophagy wins the 2016 Nobel Prize in Physiology or Medicine: breakthroughs in baker's yeast fuel advances in biomedical research. *Proc Natl Acad Sci U S A*. 2017;114(2):201–205. doi:10.1073/pnas.1619876114
7. Kuo CJ, Hansen M, Troemel E. Autophagy and innate immunity: insights from invertebrate model organisms. *Autophagy*. 2018;14(2):233–242. doi:10.1080/15548627.2017.1389824
8. Cao W, Li J, Yang K, Cao D. An overview of autophagy: mechanism, regulation and research progress. *Bull Cancer*. 2021;108(3):304–322. doi:10.1016/j.bulcan.2020.11.004
9. Kocaturk NM, Akkoc Y, Kig C, Bayraktar O, Gozuacik D, Kutlu O. Autophagy as a molecular target for cancer treatment. *Eur J Pharm Sci*. 2019;134:116–137. doi:10.1016/j.ejps.2019.04.011
10. Glick D, Barth S, Macleod KF. Autophagy: cellular and molecular mechanisms. *J Pathol*. 2010;221(1):3–12. doi:10.1002/path.2697
11. Levine B, Kroemer G. Biological functions of autophagy genes: a disease perspective. *Cell*. 2019;176(1–2):11–42. doi:10.1016/j.cell.2018.09.048
12. Singh SS, Vats S, Chia AY, et al. Dual role of autophagy in hallmarks of cancer. *Oncogene*. 2018;37(9):1142–1158. doi:10.1038/s41388-017-0046-6
13. Nakamura S, Yoshimori T. New insights into autophagosome-lysosome fusion. *J Cell Sci*. 2017;130(7):1209–1216. doi:10.1242/jcs.196352
14. Stroupe C. This Is the End: regulation of Rab7 Nucleotide Binding in Endolysosomal Trafficking and Autophagy. *Front Cell Dev Biol*. 2018;6:129. doi:10.3389/fcell.2018.00129
15. McEwan DG, Popovic D, Gubas A, et al. PLEKHM1 Regulates Autophagosome-Lysosome Fusion through HOPS Complex and LC3/GABARAP Proteins. *Mol Cell*. 2015;57(1):39–54. doi:10.1016/j.molcel.2014.11.006
16. Levine B, Kroemer G. Autophagy in the pathogenesis of disease. *Cell*. 2008;132(1):27–42. doi:10.1016/j.cell.2007.12.018
17. Yang S, Wang X, Contino G, et al. Pancreatic cancers require autophagy for tumor growth. *Genes Dev*. 2011;25(7):717–729. doi:10.1101/gad.2016111
18. Maertin S, Elperin JM, Lotshaw E, et al. Roles of autophagy and metabolism in pancreatic cancer cell adaptation to environmental challenges. *Am J Physiol-Gastr L*. 2017;313(5):G524–G536. doi:10.1152/ajpgi.00138.2017
19. Gukovskaya AS, Gukovsky I, Algul H, Habtezion A. Autophagy, inflammation, and immune dysfunction in the pathogenesis of pancreatitis. *Gastroenterology*. 2017;153(5):1212–1226. doi:10.1053/j.gastro.2017.08.071
20. Antonucci L, Fagman JB, Kim JY, et al. Basal autophagy maintains pancreatic acinar cell homeostasis and protein synthesis and prevents ER stress. *Proc Natl Acad Sci U S A*. 2015;112(45):E6166–74. doi:10.1073/pnas.1519384112
21. Wang L, Xie D, Wei D. Pancreatic acinar-to-ductal metaplasia and pancreatic cancer. *Methods Mol Biol*. 2019;1882:299–308. doi:10.1007/978-1-4939-8879-2\_26
22. Mann KM, Ying H, Juan J, Jenkins NA, Copeland NG. KRAS-related proteins in pancreatic cancer. *Pharmacol Ther*. 2016;168:29–42. doi:10.1016/j.pharmthera.2016.09.003
23. Loncle C, Molejon MI, Lac S, et al. The pancreatitis-associated protein VMP1, a key regulator of inducible autophagy, promotes Kras(G12D)-mediated pancreatic cancer initiation. *Cell Death Dis*. 2016;7:e2295. doi:10.1038/cddis.2016.202
24. Rosenfeldt MT, O'Prey J, Morton JP, et al. p53 status determines the role of autophagy in pancreatic tumour development. *Nature*. 2013;504(7479):296–300. doi:10.1038/nature12865
25. Yang A, Rajeshkumar NV, Wang XX, et al. Autophagy Is Critical for Pancreatic Tumor Growth and Progression in Tumors with p53 Alterations. *Cancer Discov*. 2014;4(8):905–913. doi:10.1158/2159-8290.Cd-14-0362
26. Xie YC, Liu J, Kang R, Tang DL. Mitophagy in Pancreatic Cancer. *Front Oncol*. 2021;11:2548.
27. Sousa CM, Biancur DE, Wang XX, et al. Pancreatic stellate cells support tumour metabolism through autophagic alanine secretion. *Nature*. 2016;536(7617):479. doi:10.1038/nature19084
28. Endo S, Nakata K, Ohuchida K, et al. Autophagy is required for activation of pancreatic stellate cells, associated with pancreatic cancer progression and promotes growth of pancreatic tumors in mice. *Gastroenterology*. 2017;152(6):1492. doi:10.1053/j.gastro.2017.01.010
29. Gorgulu K, Diakopoulos KN, Ai J, et al. Levels of the Autophagy-Related 5 Protein Affect Progression and Metastasis of Pancreatic Tumors in Mice. *Gastroenterology*. 2019;156(1):203–217e20. doi:10.1053/j.gastro.2018.09.053
30. He R, Wang M, Zhao C, et al. TFEB-driven autophagy potentiates TGF-beta induced migration in pancreatic cancer cells. *J Exp Clin Cancer Res*. 2019;38(1):340. doi:10.1186/s13046-019-1343-4
31. Liang C, Xu J, Meng Q, et al. TGFB1-induced autophagy affects the pattern of pancreatic cancer progression in distinct ways depending on SMAD4 status. *Autophagy*. 2020;16(3):486–500. doi:10.1080/15548627.2019.1628540
32. Chen H, Li L, Hu J, et al. UBL4A inhibits autophagy-mediated proliferation and metastasis of pancreatic ductal adenocarcinoma via targeting LAMP1. *J Exp Clin Cancer Res*. 2019;38(1):297. doi:10.1186/s13046-019-1278-9
33. Chu L, Hu Y, Jiang YH, Xu C, Liu WC, Lu ZF. Effects of RNA binding protein QKI on pancreatic cancer ductal epithelial cells and surrounding activation fibroblasts. *J Cell Biochem*. 2019;120(7):11551–11561. doi:10.1002/jcb.28435
34. Yan Z, Ohuchida K, Fei S, et al. Inhibition of ERK1/2 in cancer-associated pancreatic stellate cells suppresses cancer-stromal interaction and metastasis. *J Exp Clin Cancer Res*. 2019;38(1):221. doi:10.1186/s13046-019-1226-8

35. Di Malta C, Siciliano D, Calcagni A, et al. Transcriptional activation of RagD GTPase controls mTORC1 and promotes cancer growth. *Science*. 2017;356(6343):1188–1192. doi:10.1126/science.aag2553
36. Yang J, Ren B, Yang G, et al. The enhancement of glycolysis regulates pancreatic cancer metastasis. *Cell Mol Life Sci*. 2020;77(2):305–321. doi:10.1007/s00018-019-03278-z
37. Biancur DE, Kimmelman AC. The plasticity of pancreatic cancer metabolism in tumor progression and therapeutic resistance. *Bba Rev Cancer*. 2018;1870(1):67–75. doi:10.1016/j.bbcan.2018.04.011
38. Meng QC, Xu J, Liang C, et al. GPx1 is involved in the induction of protective autophagy in pancreatic cancer cells in response to glucose deprivation. *Cell Death Dis*. 2018;1:9.
39. Li X, Deng SC, Liu ML, et al. The responsively decreased PKM2 facilitates the survival of pancreatic cancer cells in hypoglycose. *Cell Death Dis*. 2018;9:487.
40. Bryant KL, Stalneck CA, Zeitouni D, et al. Combination of ERK and autophagy inhibition as a treatment approach for pancreatic cancer. *Nat Med*. 2019;25(4):628. doi:10.1038/s41591-019-0368-8
41. Kim JH, Kim HY, Lee YK, et al. Involvement of mitophagy in oncogenic K-Ras-induced transformation: overcoming a cellular energy deficit from glucose deficiency. *Autophagy*. 2011;7(10):1187–1198. doi:10.4161/auto.7.10.16643
42. Xu R, Yang J, Ren B, et al. Reprogramming of Amino Acid Metabolism in Pancreatic Cancer: recent Advances and Therapeutic Strategies. *Front Oncol*. 2020;10:572722. doi:10.3389/fonc.2020.572722
43. Seo JW, Choi J, Lee SY, et al. Autophagy is required for PDAC glutamine metabolism. *Sci Rep-Uk*. 2016;6:251.
44. Hosein AN, Beg MS. Pancreatic Cancer Metabolism: molecular Mechanisms and Clinical Applications. *Curr Oncol Rep*. 2018;20(7):56. doi:10.1007/s11912-018-0699-5
45. Wyant GA, Abu-Remaileh M, Wolfson RL, et al. mTORC1 Activator SLC38A9 Is Required to Efflux Essential Amino Acids from Lysosomes and Use Protein as a Nutrient. *Cell*. 2017;171(3):642. doi:10.1016/j.cell.2017.09.046
46. Alexander A, Cai SL, Kim J, et al. ATM signals to TSC2 in the cytoplasm to regulate mTORC1 in response to ROS. *Proc Natl Acad Sci U S A*. 2010;107(9):4153–4158. doi:10.1073/pnas.0913860107
47. Kang R, Livesey KM, Zeh HJ 3rd, Lotze MT, Tang D. Metabolic regulation by HMGB1-mediated autophagy and mitophagy. *Autophagy*. 2011;7(10):1256–1258. doi:10.4161/auto.7.10.16753
48. Tang D, Loze MT, Zeh HJ, Kang R. The redox protein HMGB1 regulates cell death and survival in cancer treatment. *Autophagy*. 2010;6(8):1181–1183. doi:10.4161/auto.6.8.13367
49. Yu Z, Yu Z, Chen ZB, et al. Zinc chelator TPEN induces pancreatic cancer cell death through causing oxidative stress and inhibiting cell autophagy. *J Cell Physiol*. 2019;234(11):20648–20661. doi:10.1002/jcp.28670
50. Yang AN, Herter-Sprie G, Zhang HK, et al. Autophagy sustains pancreatic cancer growth through both cell-autonomous and nonautonomous mechanisms. *Cancer Discov*. 2018;8(3):276–287. doi:10.1158/2159-8290.Cd-17-0952
51. Yamamoto K, Venida A, Perera RM, Kimmelman AC. Selective autophagy of MHC-I promotes immune evasion of pancreatic cancer. *Autophagy*. 2020;16(8):1524–1525. doi:10.1080/15548627.2020.1769973
52. Yamamoto K, Venida A, Yano J, et al. Autophagy promotes immune evasion of pancreatic cancer by degrading MHC-I. *Nature*. 2020;581(7806):100–105. doi:10.1038/s41586-020-2229-5
53. Chiorean EG, Covelev AL. Pancreatic cancer: optimizing treatment options, new, and emerging targeted therapies. *Drug Des Devel Ther*. 2015;9:3529–3545. doi:10.2147/DDDT.S60328
54. Zhu J, Chen Y, Ji Y, et al. Gemcitabine induces apoptosis and autophagy via the AMPK/mTOR signaling pathway in pancreatic cancer cells. *Biotechnol Appl Biochem*. 2018;65(5):665–671. doi:10.1002/bab.1657
55. Hashimoto D, Blauer M, Hirota M, Ikonen NH, Sand J, Laukkanen J. Autophagy is needed for the growth of pancreatic adenocarcinoma and has a cytoprotective effect against anticancer drugs. *Eur J Cancer*. 2014;50(7):1382–1390. doi:10.1016/j.ejca.2014.01.011
56. Karasic TB, O'Hara MH, Loaiza-Bonilla A, et al. Effect of Gemcitabine and nab-Paclitaxel With or Without Hydroxychloroquine on Patients With Advanced Pancreatic Cancer A Phase 2 Randomized Clinical Trial. *JAMA Oncol*. 2019;5(7):993–998. doi:10.1001/jamaoncol.2019.0684
57. Wang F, Xia XJ, Yang CY, et al. SMAD4 gene mutation renders pancreatic cancer resistance to radiotherapy through promotion of autophagy. *Clin Cancer Res*. 2018;24(13):3176–3185. doi:10.1158/1078-0432.Ccr-17-3435
58. Kinsey CG, Camolotto SA, Boespflug AM, et al. Protective autophagy elicited by RAF -> MEK -> ERK inhibition suggests a treatment strategy for RAS-driven cancers. *Nat Med*. 2019;25(4):620. doi:10.1038/s41591-019-0367-9

## Cancer Management and Research

Dovepress

### Publish your work in this journal

Cancer Management and Research is an international, peer-reviewed open access journal focusing on cancer research and the optimal use of preventative and integrated treatment interventions to achieve improved outcomes, enhanced survival and quality of life for the cancer patient.

The manuscript management system is completely online and includes a very quick and fair peer-review system, which is all easy to use. Visit <http://www.dovepress.com/testimonials.php> to read real quotes from published authors.

Submit your manuscript here: <https://www.dovepress.com/cancer-management-and-research-journal>