

Prognostic Analysis of Single Large Hepatocellular Carcinoma Following Radical Resection: A Single-Center Study

Jian Huang^{1,*}, Li Li^{2,*}, Fu-Chen Liu¹, Bi-Bo Tan³, Yun Yang¹, Bei-Ge Jiang¹, Ze-Ya Pan¹

¹Third Department of Hepatic Surgery, Eastern Hepatobiliary Surgery Hospital, Naval Medical University, Shanghai, 201805, People's Republic of China; ²Department of Nephrology, Eastern Hepatobiliary Surgery Hospital, Naval Medical University, Shanghai, 201805, People's Republic of China; ³Department of Ultrasonic, Eastern Hepatobiliary Surgery Hospital, Naval Medical University, Shanghai, 201805, People's Republic of China

*These authors contributed equally to this work

Correspondence: Ze-Ya Pan; Bei-Ge Jiang, Third Department of Hepatic Surgery, Eastern Hepatobiliary Surgery Hospital, Naval Medical University, No. 700, MoYu North Road, Jiading, Shanghai, People's Republic of China, Tel +86-13391236437; +86-13764561303, Email hjluffy@126.com; jiang_beige@aliyun.com

Objective: To investigate the survival and independent prognostic factors for single large hepatocellular carcinoma (SLHCC) after surgical resection.

Methods: Patients with SLHCC who underwent radical resection from January 2013 to December 2017 were retrospectively analyzed. The Kaplan-Meier method was used to analyze the overall survival (OS) rate and recurrence-free survival (RFS) rates. Cox forward stepwise regression was performed to analyze the independent prognostic factors.

Results: A total of 485 cases were included. The average age was 51.2±11.2 years, 88.9% had a history of hepatitis B virus infection, and most patients had normal liver function. The average tumor diameter was 8.8±3.0 cm. The 1-, 3-, and 5-year OS and RFS rates were 76.8%, 56.7%, and 45.7%, and 61.0%, 46.2%, and 34.7%, respectively. Multivariate analysis showed that liver cirrhosis (HR=1.456, $P=0.004$), total bilirubin (TB) ≥ 17.1 $\mu\text{mol/L}$ (HR=1.437, $P=0.011$), glutamyl transferase (GGT) >60 U/L (HR=1.438, $P=0.020$), lactate dehydrogenase (LDH) >225 U/L (HR=1.442, $P=0.007$), blood loss ≥ 400 mL (HR=1.339, $P=0.027$), microvascular invasion (MVI) (HR=1.492, $P=0.004$), satellite lesions (HR=1.859, $P<0.0001$) and Edmondson-Steiner grade III+IV (HR=1.740, $P=0.018$) were independent risk factors for reduced OS in SLHCC patients. Sex (HR=1.763, $P=0.003$), liver cirrhosis (HR=1.382, $P=0.007$), GGT >60 U/L (HR=1.512, $P=0.003$), LDH >225 U/L (HR=1.480, $P=0.002$), MVI (HR=1.545, $P=0.001$), and satellite lesions (HR=1.564, $P=0.001$) were independent risk factors for reduced RFS. OS and RFS nomograms were constructed using risk factors with C-index values of 0.692 (95% CI: 0.659–0.724) and 0.659 (95% CI: 0.623–0.693), respectively. The Hosmer-Lemeshow test demonstrated the good fit of both nomograms.

Conclusion: Surgical resection is the standard and effective treatment for SLHCC patients. Sex, liver cirrhosis, TB ≥ 17.1 $\mu\text{mol/L}$, GGT >60 U/L, LDH >225 U/L, blood loss ≥ 400 mL, MVI, Edmondson-Steiner grade III+IV, and satellite lesions were found to be independent prognostic factors in SLHCC patients following radical resection. The OS and RFS nomograms accurately predicted the prognosis of SLHCC patients.

Keywords: SLHCC, cancer, hepatectomy, prognosis, risk factor

Introduction

Hepatocellular carcinoma (HCC) is the sixth most common malignancy worldwide and the third leading cause of cancer-related mortality.¹ HCC accounts for 70–85% of primary liver cancers, and chronic hepatitis virus infection and non-alcoholic fatty liver disease have been established as the main causes.^{1,2}

In recent years, the surveillance and census of groups at high risk of HCC have significantly increased the early detection rate, significantly improving patient prognosis. However, it has been found that up to 32% of HCC patients have tumors larger than 5 cm in diameter at the time of the clinical diagnosis, and 10% to 20% of HCC patients have

tumors larger than 10 cm.³ There is debate over the suitability of surgical treatment for single large HCC tumors (>5 cm). The Barcelona Clinic Liver Cancer (BCLC) staging (2022 edition) classifies HCC as an early-stage liver cancer, with surgical resection the preferred treatment option.⁴ However, the long-term efficacy and prognostic factors of surgically resected single large HCC (SLHCC) are not very clear.^{5,6} It has been reported that the 5-year OS rate following resection in SLHCC patients was similar to BCLC stage B tumors.⁷ The larger the tumor, the greater the possibility of vascular invasion and the worse the histological differentiation.⁸ Even after radical resection, the 5-year disease-free survival rate is still low.⁹ Therefore, this study retrospectively analyzed the clinicopathological and prognostic data of patients with SLHCC who underwent radical surgical resection. The study aimed to provide a novel reference for the clinical treatment of SLHCC.

Materials and Methods

Patients

A retrospective case-control study method was used to retrospectively analyze patients with SLHCC who underwent radical resection in our hospital from January 2013 to December 2017. The diagnostic criteria for SLHCC were as follows:¹⁰ single tumor; maximum tumor diameter >5 cm; no macrovascular invasion; no intrahepatic and distant metastasis; postoperative pathologically confirmed HCC. The inclusion criteria were as follows: (1) patients met the diagnostic criteria for SLHCC; (2) R0 resection with negative margins; (3) patients had not received any adjuvant therapy or invasive therapy before surgery. The exclusion criteria were as follows: (1) patients who had undergone reoperation due to tumor recurrence; (2) patients with metastases in the surrounding organs, lymph nodes, or distant sites; (3) combined with a history of other malignant tumors; (4) incomplete or missing follow-up data. This study was approved by the ethics committee of Eastern Hepatobiliary Surgery Hospital, and all patients signed informed consent. This study complied with the principles of the Declaration of Helsinki (1964).

Data Collection

The data of patients before and after the surgery were collected for analysis, including general information such as sex, age, history of hepatitis B, and liver function classification. Preoperative laboratory examination data included the levels of total bilirubin (TB), albumin (ALB), alanine transaminase (ALT), aspartate aminotransferase (AST), γ -glutamyl transferase (GGT), alkaline phosphatase (ALP), lactate dehydrogenase (LDH), alpha-fetoprotein (AFP), carbohydrate antigen 19-9 (CA19-9), and carcino-embryonic antigen (CEA). Intraoperative data included surgical method, intraoperative blood loss, time of hepatic hilar occlusion, and tumor diameter. The postoperative histopathological analysis included liver cirrhosis, microvascular invasion (MVI), satellite lesions, and Edmondson-Steiner grading.¹¹

Surgical Procedures

All patients underwent routine examinations and imaging studies before surgery to exclude contraindications. Liver resection was performed by the right subcostal incision and extended to the left subcostal and xiphoid process if required. The surgical incision was usually about 20–25 cm long. The surgeon first checked the other organs in the abdominal cavity for metastasis, and then the primary focus, and this information combined with that from the preoperative imaging examination determined the surgical resection method. Anatomic resection was preferred for hemi-hepatic tumors or those located in liver lobes or segments. The hepatic parenchyma was separated by the clamp-crushing method and ultrasound knife, and the related hepatic pedicles and veins were ligated carefully. The hepatic portal vein was blocked by Pringle's maneuver to control and restrict intraoperative bleeding, with clamping and unclamped cycles of 15 and 5 minutes respectively. Radical surgery was defined as the microscopic absence of remaining tumor around the margins.¹²

Follow-Up

The follow-up methods mainly included outpatient review and telephone follow-up. For two years following the operation, the AFP, CEA, CA19-9, liver function, and abdominal B-ultrasound were reviewed every three months, whereas abdominal contrast-enhanced computed tomography or magnetic resonance imaging was performed every six

months. In addition, 2 years after the surgery, the biochemical indices and abdominal B-ultrasound were reviewed every 6 months, and imaging examinations were performed every 12 months or if recurrence was suspected. The diagnostic criteria for recurrence were positive findings on imaging examinations and persistently elevated postoperative AFP. The follow-up deadline was February 2020.

Statistical Analysis

SPSS 26.0 statistical software (IBM Corp., NY, USA) and R software were used for the data processing and analysis, and Graph Pad Prism 9.0 (San Diego, CA, USA) was used for the graphical analysis. Continuous variables were expressed as mean \pm standard deviation, and categorical variables were expressed as frequency and proportion. The chi-squared test or Fisher's exact test was used for analyzing differences between categorical variables. Univariate and multivariate analyses were performed using the Cox proportional hazards model. Variables significantly associated with prognosis in the univariate analysis ($P < 0.05$) were imported into the multivariate analysis. Survival analysis was performed using the Kaplan-Meier method and compared using the Log rank test. The *rms* package in R (version 4.0.3) was used to construct the prognostic nomograms based on the independent factors identified by the multivariate analysis. The calibration curve and C-index were used to test the performance of the nomograms. Bootstrapping with 1000 resamples was used for calibration curve construction. The calibration curves were depicted by the Kaplan-Meier method to evaluate the agreement between the nomogram prediction and actual observations, while the consistency of the model was determined by the Hosmer-Lemeshow test, and $P > 0.05$ was considered a good fit of the model. Version 3.6.1 of X-tile software from Yale University School of Medicine (Connecticut, United States)¹³ was used to split patients into three risk groups based on the nomogram score. Overall survival (OS) was defined as the interval between the date of surgery and the date of death or the date of the last follow-up. Recurrence-free survival (RFS) was defined as the interval between the operation data and the diagnosis of tumor recurrence. $P < 0.05$ was considered statistically significant.

Results

Clinicopathological Features of SLHCC Patients

According to the inclusion and exclusion criteria, a total of 485 SLHCC patients (Table 1) were included in this study with an average age of 51.2 ± 11.2 years and including 406 males (83.7%) and 79 females (16.3%). Among them, 431 patients (88.9%) were HBsAg positive, almost all patients were classified as Child-Pugh A, and only 13 patients (2.7%)

Table 1 Clinicopathologic Characteristics of All Patients and Univariate Analysis for OS and RFS

Variables	Number (Percentage)	OS			RFS		
		HR	95% CI	P	HR	95% CI	P
Age, year							
≥ 60	120 (24.7%)	1.080	0.814–1.434	0.593	1.059	0.813–1.378	0.672
< 60	365 (75.3%)						
Sex							
Male	406 (83.7%)	1.442	0.995–2.091	0.053	1.761	1.225–2.532	0.002
Female	79 (16.3%)						
HBsAg							
Positive	431 (88.9%)	1.107	0.742–1.652	0.618	1.167	0.803–1.695	0.418
Negative	54 (11.1%)						
AFP, $\mu\text{g/L}$							
> 400	213 (43.9%)	1.669	1.301–2.142	<0.001	1.394	1.105–1.759	0.005
≤ 400	272 (56.1%)						
CEA, $\mu\text{g/L}$							
> 10	7 (1.4%)	1.899	0.707–5.104	0.203	1.511	0.563–4.055	0.413
≤ 10	478 (98.6%)						

(Continued)

Table 1 (Continued).

Variables	Number (Percentage)	OS			RFS		
		HR	95% CI	P	HR	95% CI	P
CA199, U/mL							
>39	72 (14.8%)	1.208	0.861–1.695	0.274	1.239	0.904–1.699	0.183
≤39	413 (85.2%)						
TB, μmol/L							
≥17.1	108 (22.3%)	1.632	1.24–2.147	<0.001	1.419	1.089–1.849	0.010
<17.1	377 (77.7%)						
ALB, g/L							
≥40	326 (67.2%)	1.275	0.984–1.652	0.066	1.092	0.854–1.397	0.482
<40	159 (32.8%)						
ALT, U/L							
>40	212 (43.7%)	1.069	0.833–1.374	0.599	1.105	0.876–1.395	0.399
≤40	273 (56.3%)						
AST, U/L							
>40	243 (50.1%)	1.446	1.125–1.858	0.004	1.308	1.037–1.65	0.023
≤40	242 (49.9%)						
GGT, U/L							
>60	333 (68.7%)	1.789	1.337–2.394	<0.001	1.785	1.367–2.33	<0.001
≤60	152 (31.3%)						
LDH, U/L							
>225	177 (36.5%)	1.896	1.475–2.436	<0.001	1.770	1.399–2.24	<0.001
≤225	308 (63.5%)						
ALP, U/L							
≤130	382 (78.8%)	1.760	1.33–2.331	<0.001	1.303	0.98–1.733	0.069
>130	103 (21.2%)						
Child-Pugh							
A	472 (97.3%)	1.451	0.717–2.936	0.300	0.251	0.062–1.009	0.051
B	13 (2.7%)						
Blood loss, mL							
<400	285 (58.8%)	1.449	1.129–1.859	0.004	1.376	1.09–1.736	0.007
≥400	200 (41.2%)						
Hepatic hilar occlusion time, min							
<30	409 (84.3%)	1.274	0.919–1.764	0.146	1.356	0.999–1.841	0.051
≥30	76 (15.7%)						
Tumor size, cm							
≤10	354 (73.0%)	1.331	1.014–1.747	0.040	1.120	0.862–1.454	0.396
>10	131 (27.0%)						
Liver cirrhosis							
Yes	229 (47.2%)	1.583	1.233–2.034	<0.001	1.429	1.133–1.802	0.003
No	256 (52.8%)						
MVI							
Yes	173 (35.7%)	1.907	1.484–2.45	<0.001	1.801	1.423–2.279	<0.001
No	312 (64.3%)						
Satellite lesions							
Yes	147 (30.3%)	2.205	1.71–2.842	<0.001	1.880	1.477–2.392	<0.001
No	338 (69.7%)						
Edmondson-Steiner grade							
I+II	61 (12.6%)	2.158	1.379–3.377	0.001	1.571	1.087–2.27	0.016
III+IV	424 (87.4%)						

Note: $P < 0.05$ was defined as statistical significance (italicized and bold).

Abbreviations: HBsAg, Hepatitis B surface antigen; AFP, alpha-fetoprotein; CEA, carcino-embryonic antigen; CA19-9, carbohydrate antigen 19-9; TB, total bilirubin; ALB, albumin; ALT, alanine transaminase; AST, aspartate aminotransferase; GGT, γ -glutamyl transferase; LDH, lactate dehydrogenase; ALP, alkaline phosphatase; MVI, microvascular invasion; OS, overall survival; RFS, recurrence free survival; CI, confidence interval; HR, hazard ratios.

were classified as Child-Pugh B. The results of the tumor markers indicated that 213 patients (43.9%) had preoperative AFP > 400 $\mu\text{g/L}$, 72 patients (14.8%) had elevated CA19-9, and 7 patients (1.4%) had CEA exceeding the normal level. Segmentectomy was performed in 293 cases (60.5%), lobectomy was conducted in 138 cases (28.4%), and hemihepatectomy in 54 cases (11.1%). The average time of the hepatic hilar occlusion was 20.2 ± 9.8 min, 76 cases (15.7%) had more than 30 min, and 200 cases (41.2%) had intraoperative blood loss greater than 400 mL. The average diameter of the resected tumors was 8.8 ± 3.0 cm, and 131 patients (27.0%) had tumors with a maximum diameter of more than 10 cm. Postoperative histopathological analysis showed significant microvascular invasion in 173 cases (35.7%) and satellite lesions in 147 cases (30.3%). There were 424 patients (87.4%) with Edmondson-Steiner grade III+IV and 229 patients (47.2%) with liver cirrhosis.

Analysis of OS and RFS in Patients with SLHCC

All patients were successfully followed up after surgery, and the median follow-up time was 41 months (1.0–84.0 months). The 1-, 3-, and 5-year OS rates of all patients were 76.8%, 56.7%, and 45.7%, respectively, and the median survival time was 48.1 months. Overall, 248 (51.1%) patients died during the follow-up period (Figure 1a). The 1-, 3-, and 5-year recurrence-free survival rates of all patients were 61.0%, 46.2%, and 34.7%, respectively. The median recurrence-free survival was 27.5 months. A total of 287 (59.2%) patients displayed tumor recurrence after the surgery, of which 224 (78.0%) recurred within 2 years of the surgery (Figure 1b).

Univariate and Multivariate Analyses of OS in Patients with SLHCC

Univariate analysis found that AFP, TB, AST, GGT, LDH, ALP, intraoperative bleeding, tumor diameter, liver cirrhosis, microvascular invasion, satellite lesions, and Edmondson-Steiner grade were major risk factors for OS in patients with SLHCC (Table 1). Further multivariate analysis found that liver cirrhosis (HR=1.456, 95% CI:1.130–1.877, $P=0.004$), TB ≥ 17.1 $\mu\text{mol/L}$ (HR=1.437, 95% CI:1.086–1.903, $P=0.011$), GGT > 60 U/L (HR=1.438, 95% CI:1.060–1.951, $P=0.020$), LDH > 225 U/L (HR=1.442, 95% CI:1.108–1.879, $P=0.007$), intraoperative bleeding ≥ 400 mL (HR=1.339, 95% CI:1.033–1.735, $P=0.027$), MVI (HR=1.492, 95% CI:1.139–1.955, $P=0.004$), satellite lesions (HR=1.859, 95% CI: 1.418–2.436, $P=0.000$) and Edmondson-Steiner grade III+IV (HR=1.740, 95% CI: 1.100–2.753, $P=0.018$) were independent risk factors for patient OS (Table 2). The Kaplan-Meier curves of the above-mentioned risk factors for OS were shown in Figure 2.

Univariate and Multivariate Analysis of RFS in Patients with SLHCC

Univariate analysis found that the sex, AFP, TB, AST, GGT, LDH, intraoperative bleeding, liver cirrhosis, MVI, satellite lesions, and Edmondson-Steiner grade were risk factors for RFS in patients with SLHCC (Table 1). In addition, multivariate analysis found that the male sex (HR=1.763, 95% CI:1.220–2.547, $P=0.003$), liver cirrhosis (HR=1.382, 95% CI:1.092–1.747, $P=0.007$), GGT > 60 U/L (HR=1.512, 95% CI:1.147–1.994, $P=0.003$), LDH > 225 U/L (HR=1.480, 95% CI:1.160–1.888, $P=0.002$), MVI (HR=1.545, 95% CI: 1.201–1.987, $P=0.001$), and satellite lesions (HR=1.564, 95%

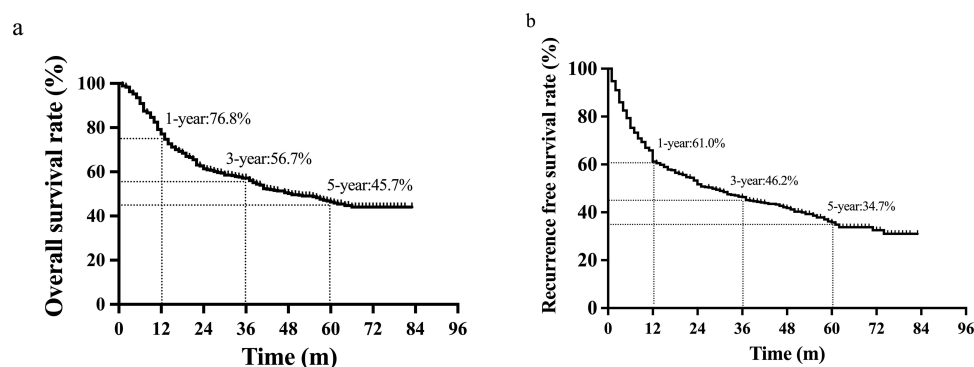


Figure 1 Kaplan-Meier curves for SLHCC patient OS (a) and RFS (b).

Abbreviations: SLHCC, single large hepatocellular carcinoma; OS, overall survival; RFS, recurrence-free survival.

Table 2 Multivariate Analysis of SLHCC Patients for OS

Variables	B	SE	Wald	HR	95% CI	P
Liver cirrhosis (Yes / No)	0.376	0.129	8.425	1.456	1.130–1.877	0.004
TB (≥ 17.1 / < 17.1 , $\mu\text{mol/L}$)	0.363	0.143	6.429	1.437	1.086–1.903	0.011
GGT (> 60 / ≤ 60 , U/L)	0.363	0.156	5.453	1.438	1.060–1.951	0.020
LDH (> 225 / ≤ 225 , U/L)	0.366	0.135	7.387	1.442	1.108–1.879	0.007
Blood loss (≥ 400 / < 400 , mL)	0.292	0.132	4.874	1.339	1.033–1.735	0.027
MVI (Yes / No)	0.400	0.138	8.428	1.492	1.139–1.955	0.004
Satellite lesions (Yes / No)	0.620	0.138	20.183	1.859	1.418–2.436	<0.001
Edmondson-Steiner grade (I+II / III+IV)	0.554	0.234	5.607	1.740	1.100–2.753	0.018

Note: $P < 0.05$ was defined as statistical significance (italicized).

Abbreviations: TB, total bilirubin; GGT, γ -glutamyl transferase; LDH, lactate dehydrogenase; MVI, microvascular invasion; SLHCC, single large hepatocellular carcinoma; OS, overall survival; CI, confidence interval; HR, hazard ratios.

CI: 1.211–2.019, $P = 0.001$) were independent risk factors for RFS (Table 3). The Kaplan-Meier curves of the independent risk factors for RFS were shown in Figure 3.

Construction of the OS and RFS Nomograms

The OS and RFS nomograms were constructed using the independent risk factors identified by the multivariate analyses of OS and RFS (Figure 4). Each risk factor was assigned a specific score, and the individualized grade for each included patient was defined by the sum of the scores of the factors. The total points on the scale indicate the probability of survival at 1, 3, and 5 years. The C-index values of the OS and RFS nomograms were 0.692 (95% CI: 0.659–0.724) and 0.659 (95% CI: 0.623–0.693), respectively. Moreover, the calibration curves showed good agreement between the actual observed and predicted values for OS (Figure 5a–c) and RFS (Figure 5d–f) at 1, 3, and 5 years. In addition, the Hosmer–Lemeshow test demonstrated that the two nomograms were a good fit ($\chi^2 = 6.277$, $P = 0.616$ for OS nomogram; $\chi^2 = 4.391$, $P = 0.820$ for RFS nomogram).

Risk of Mortality and Recurrence Based on the Nomograms

Each risk factor corresponded to a specific score based on the established nomograms. The total points of each patient were calculated, and the patients were then split into three groups using X-tile software. As per the nomogram of OS, all patients were split into low- (score ≤ 254), middle- (255–356), and high-risk (> 356) groups, and the Kaplan-Meier curves of OS exhibited a clear and distinct prognosis rate in each risk group (Figure 6a). In the RFS nomogram, the patients were divided into low- (score ≤ 208), middle- (209–320) and high-risk (> 320) groups, with each group representing a distinct prognosis (Figure 6b).

Discussion

The BCLC staging is based on the tumor burden and liver functional reserve, as well as the performance status, and can provide treatment strategies and prognostic information for each stage. Therefore, BCLC staging is the most widely used clinical staging system.¹⁴ The latest BCLC staging points out that a single HCC tumor can exhibit better biological behavior, regardless of the size of the tumor, as it belongs to the early stage, and surgical treatment is the first choice.¹⁵ However, some previous studies have considered the tumor diameter to be a risk factor for HCC recurrence, which could increase the potential risk of microvascular invasion and distant metastasis, and classified tumor sizes larger than 5 cm as stage B and recommended interventional therapy.^{16,17} Therefore, the choice of surgical treatment or interventional treatment for SLHCC remains the main issue of clinical controversy.

Jung et al¹⁸ divided 1005 HCC patients into Stage A (613 cases), Stage B (268 cases), and SLHCC (124 cases) groups according to BCLC staging. These patients were compared in terms of tumor stage, treatment, and Child-Pugh grade. The results showed that the survival rate of patients in the SLHCC group was significantly lower than that in the Stage A group, but similar to that in the Stage B group, and they thus recommended that SLHCC be classified as stage

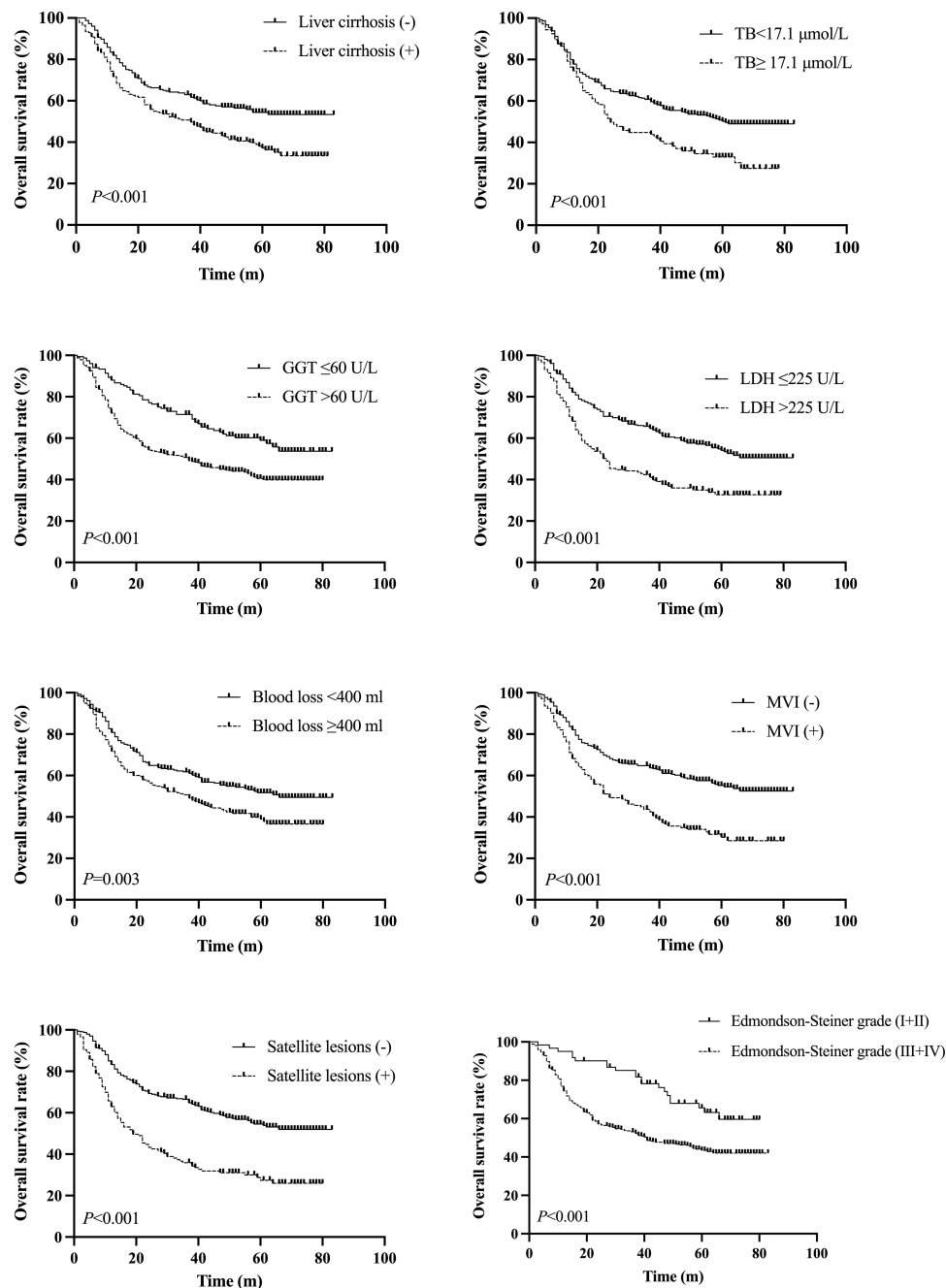


Figure 2 Kaplan-Meier curves for the results of multivariate analysis for OS.

B. However, analysis of the treatment methods used in the SLHCC group showed a median survival of 84.2 months after surgery, which was significantly better than the 28.9 months achieved with transarterial chemoembolization (TACE) treatment ($P < 0.001$), thus suggesting that surgical resection leads to significantly better outcomes than TACE. Liu et al³ studied 224 cases of SLHCC and found that the OS rates at 1, 3, and 5 years after surgical resection (88.0%, 76.0%, and 63.0%, respectively) were significantly better than those after TACE treatment (74.0%, 44.0%, and 35.0%, respectively), suggesting that surgical resection has a better curative effect. The 1-, 3-, and 5-year OS rates in the present study (76.8%, 56.7%, and 45.7%, respectively) were slightly lower than those described above but still substantially better than those in patients who received TACE. Therefore, regardless of the tumor stage, surgery is still the preferred treatment for SLHCC patients.

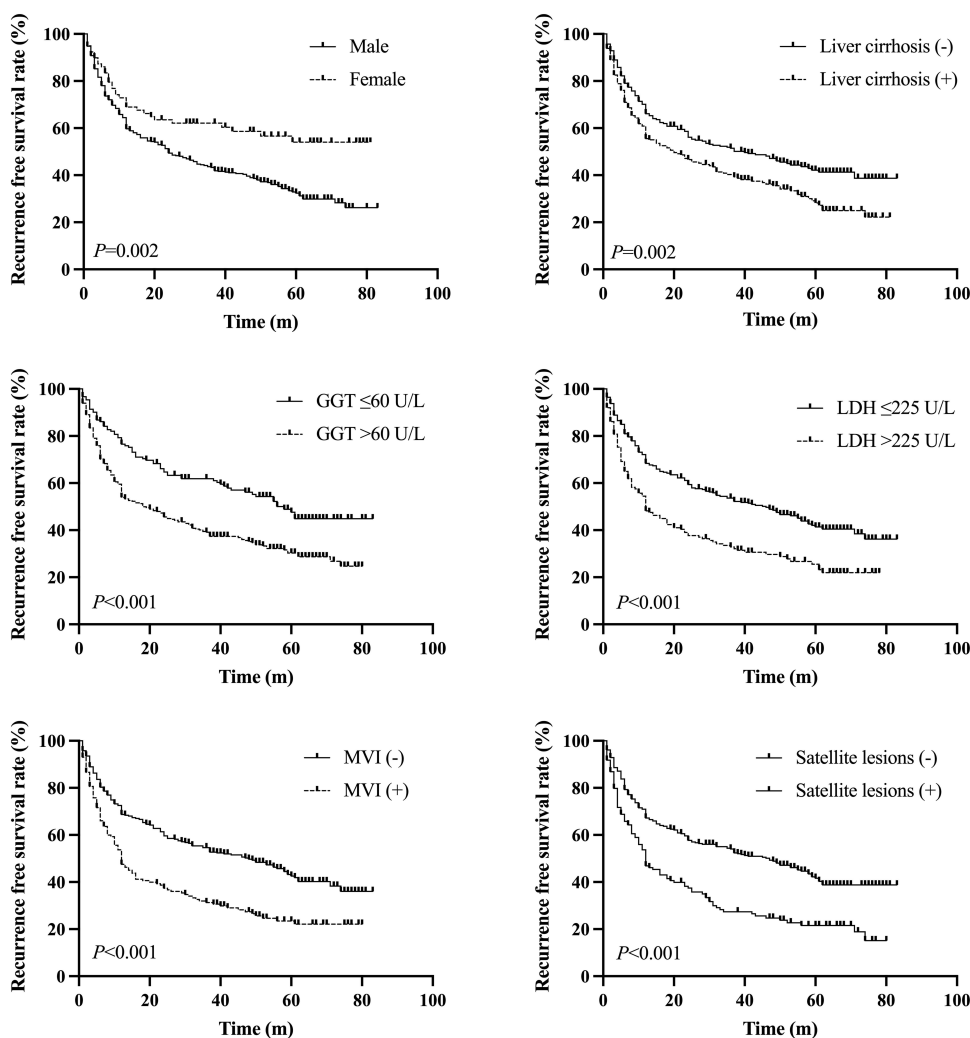
Table 3 Multivariate Analysis of SLHCC Patients for RFS

Variables	B	SE	Wald	HR	95% CI	P
Sex (Male / Female)	0.567	0.188	9.124	1.763	1.220–2.547	0.003
Liver cirrhosis (Yes / No)	0.323	0.120	7.278	1.382	1.092–1.747	0.007
GGT (>60 / ≤ 60 , U/L)	0.414	0.141	8.599	1.512	1.147–1.994	0.003
LDH (>225 / ≤ 225 , U/L)	0.392	0.124	9.981	1.480	1.160–1.888	0.002
MVI (Yes / No)	0.435	0.128	11.467	1.545	1.201–1.987	0.001
Satellite lesions (Yes / No)	0.447	0.130	11.771	1.564	1.211–2.019	0.001

Note: $P < 0.05$ was defined as statistical significance (italicized).

Abbreviations: GGT, γ -glutamyl transferase; LDH, lactate dehydrogenase; MVI, microvascular invasion; SLHCC, single large hepatocellular carcinoma; RFS, recurrence-free survival; CI, confidence interval; HR, hazard ratios.

In this study, the Cox proportional hazards model was used to analyze the various prognostic factors of SLHCC, and it was found that factors associated with liver function (TB, GGT and LDH), surgical factor (intraoperative blood loss), tumor characteristics (Edmondson-Steiner grade, liver cirrhosis, MVI, satellite lesions), and sex were independent predictors of prognosis. A nomogram constructed from independent risk factors is an intuitive statistical model that maximizes predictive accuracy and evaluates individualized prognosis.¹⁹ We used the above-mentioned independent risk

**Figure 3** Kaplan-Meier curves for the results of multivariate analysis for RFS.

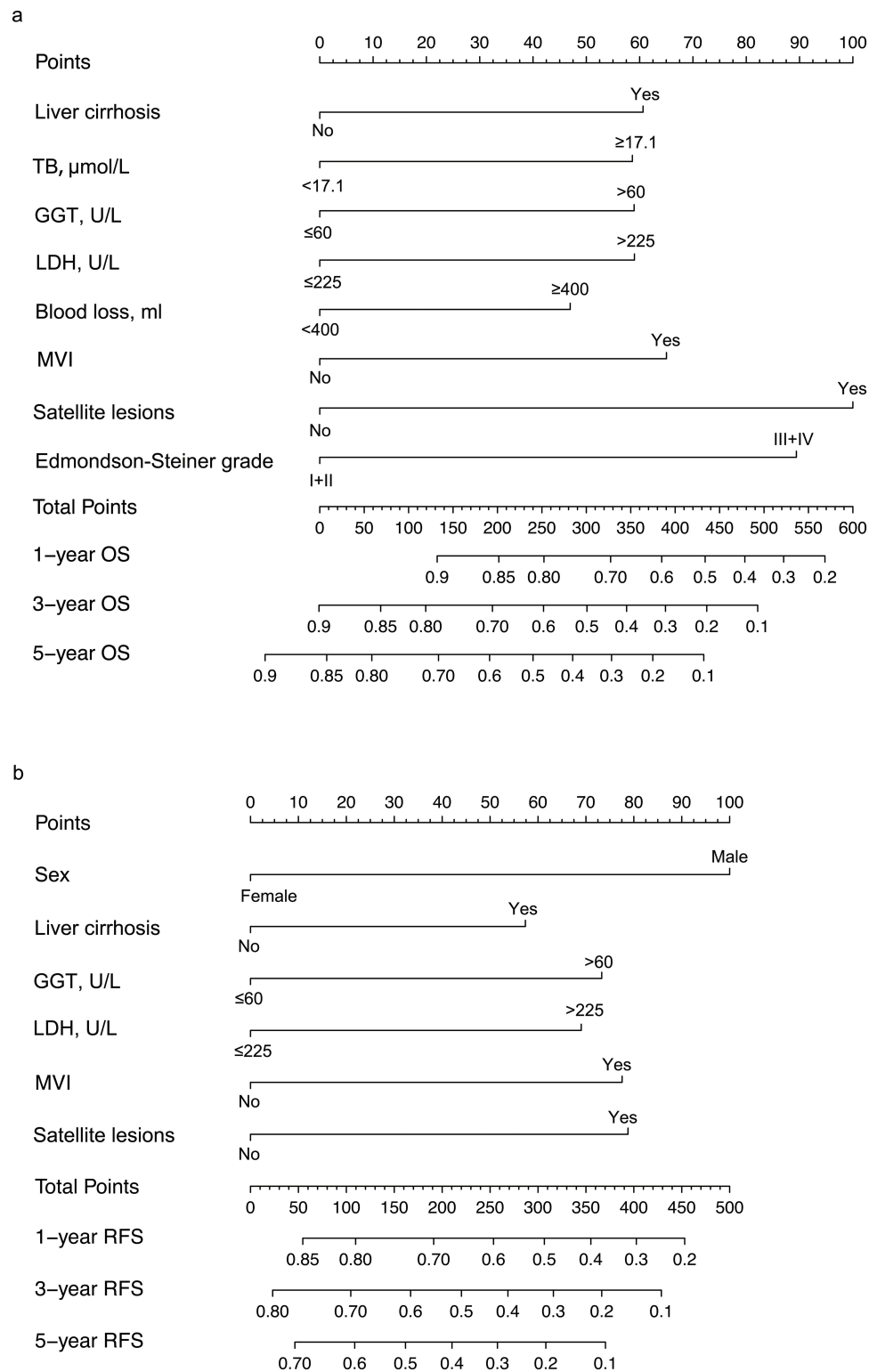


Figure 4 Nomograms for predicting prognosis in SLHCC patients. (a) Overall survival (OS). (b) Recurrence-free survival (RFS).

Abbreviations: TB, total bilirubin; GGT, γ -glutamyl transferase; LDH, lactate dehydrogenase; MVI, microvascular invasion.

factors and constructed OS and RFS nomograms, which could offer personalized survival predictions for SLHCC patients after surgery. The C-index values, calibration plots, and Hosmer-Lemeshow test demonstrated the accuracy of the nomograms in predicting survival, indicating their potential for further clinical application. Although the C-index values

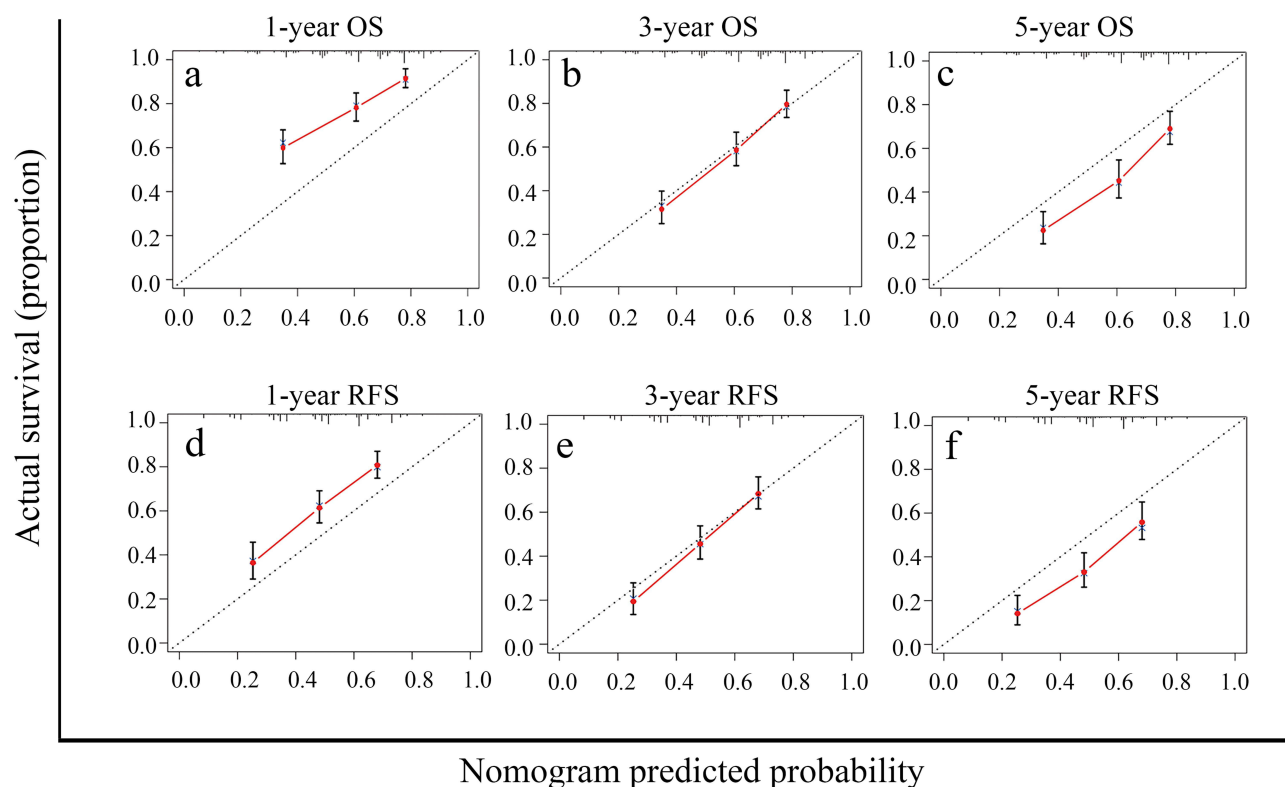


Figure 5 Calibration curves of nomograms for predicting OS and RFS of SLHCC patients at 1-, 3- and 5-years. a-c. 1- (a), 3- (b) and 5- (c) year OS. d-f. 1- (d), 3- (e) and 5- (f) year RFS.

Abbreviations: OS, overall survival; RFS, recurrence-free survival.

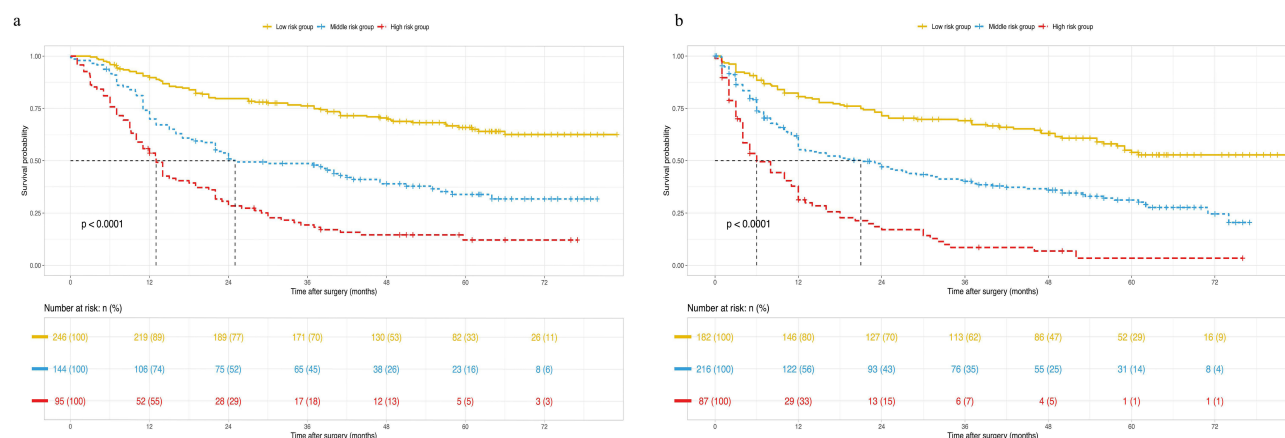


Figure 6 Kaplan-Meier curves for OS (a) and RFS (b) of patients in different risk groups based on the nomogram scores.

Abbreviations: OS, overall survival; RFS, recurrence-free survival.

were not as good as those described by Wang et al,²⁰ the nomograms also accurately divided patients into three risk groups for mortality or recurrence. Therefore, these nomograms would be helpful to guide clinicians in the monitoring and treatment of patients with a high risk of postoperative recurrence and to prescribe other adjuvant treatments or clinical trials for patients with a high risk of poor survival outcomes.

The liver function of HCC patients should be carefully considered in the choice between radical resection or interventional treatment. Preoperative liver function (measured by albumin and bilirubin levels) is closely related to the prognosis of patients after hepatectomy.²¹ Our study demonstrated that total bilirubin has a clear impact on OS. LDH

is a metabolic enzyme associated with anaerobic glycolysis that can monitor tumor initiation and progression.²² In pathological conditions such as tumors, a large amount of LDH is released into the blood, resulting in significant increases in blood LDH levels. Therefore, the LDH level can reflect the tumor burden, which is of great significance for the evaluation of therapeutic effects and prognosis after tumor treatment. GGT is a key enzyme present in the cellular membrane and is responsible for counteracting oxidative stress and thus maintaining intracellular homeostasis by catalysis of glutathione.²³ Studies have shown that an elevated GGT level is an independent adverse risk factor for HCC patients.²⁴ The reason why GGT affects the prognosis may be related to increased DNA damage and mutation, genomic instability, the activation of reactive oxygen species (ROS), and the promotion of abnormal apoptosis. Our nomograms for OS and RFS also showed that higher levels of LDH and GGT indicated worse prognosis for HCC.

Liver cirrhosis is a recognized precancerous lesion. Almost 90% of patients with HCC have cirrhosis due to hepatitis B or C infection.²⁵ The Edmondson-Steiner grading mainly considers the morphology and size of HCC cells,²⁶ and has been shown to be associated with HCC prognosis.²⁷ The findings presented here also demonstrate this. Intraoperative blood loss during hepatectomy has been reported to be a predictor of morbidity, mortality, and tumor recurrence after liver tumor resection.²⁸ Higher intraoperative blood loss promotes systemic inflammation and induces a cytokine milieu that reduces antitumor immunity,²⁹ resulting in increased morbidity and mortality in patients undergoing hepatectomy. Our study also confirmed that higher intraoperative blood loss often indicates poor prognosis after hepatectomy.

MVI refers to microscopic tumor infiltration in small intrahepatic blood vessels, including micro vessels and the small lymphatic vessels of the portal vein or hepatic artery.³⁰ MVI constitutes the main cause of intrahepatic metastasis, and increases in the tumor diameter or the tumor number can significantly increase the risk of MVI.³¹ A study by Rodríguez-Perálvarez et al³² reported an MVI incidence of 15.0–57.1%. The present study included 173 MVI-positive patients (35.7%), which was consistent with the above-mentioned results. Many previous studies have also shown MVI to be an independent risk factor for the poor prognosis of liver cancer. Even in patients with small HCC or those who have received liver transplantation, MVI could still increase the incidence of tumor recurrence and significantly shorten overall survival.^{33,34} The results of this study also showed that the prognosis of MVI-positive patients was significantly worse than that of MVI-negative patients. Since MVI is a postoperative pathological diagnosis, preoperative prediction of the risk of MVI and individualized treatment strategies can aid in further improving the prognosis of HCC patients. At present, there are many nomogram models for the preoperative prediction of the risk of MVI,^{35–37} all of which possess good identification and prediction capabilities but are not uniform and require further research.

Satellite lesions refer to lesions within 2 cm of the main tumor that have similar histological properties to the main tumor. These are often separated by the normal liver parenchyma but within the same anatomical segment. These are diagnosed by postoperative pathology,³⁸ and the incidence rate is 7–30%.^{39,40} In this study, there were 147 cases (30.3%) of patients with microscopically identified positive sub-foci, which is consistent with the incidence rate described above. Pathologic analysis has established that these sub-foci are mostly the manifestation of intrahepatic metastases of the main tumor.³⁵ Moreover, several studies have shown that satellite lesions are the main cause of tumor recurrence and unfavorable long-term survival, which may be related to the multifaceted carcinogenic mechanisms underlying HCC and intrahepatic metastasis.^{41,42} The results of this study also indicated that the prognosis of SLHCC patients positive for satellite lesions was significantly worse than that for patients lacking these lesions.

We found that sex was an independent risk factor for the postoperative recurrence of SLHCC, and the postoperative recurrence rate of the male patients was 1.763 times higher than that of the female patients. A previous study has shown that men are 3–8 times more likely to develop HCC than women, which may be related to the secretion of various sex hormones.⁴³ Xu et al⁴⁴ also found in their study of HCC recurrence two years after liver resection that male patients were more likely to show recurrence after surgery than female patients. The authors suggested that this may have been related to closer and stricter surveillance for recurrence in the male patients later in the follow-up period. This finding also suggested that sex hormone therapy might effectively reduce the potential risk of liver cancer recurrence, although further research is needed on this topic.

Furthermore, the present study found that tumor diameter was not an independent risk factor for SLHCC prognosis, although tumor diameter was found to be associated with OS in the univariate analysis, which was consistent with the findings of Lim et al.⁴⁵ It has been reported that postoperative recurrence of liver cancer is closely related to the tumor

diameter, especially for tumors with diameters > 5 cm.⁴⁴ However, the results of the present study found no significant difference in tumor recurrence between SLHCC patients with tumor diameters >10 cm and those with tumors ≤ 10 cm ($P=0.396$). Although the classification criteria of tumor diameter were not identical in the two studies, these findings also reflected that the biological behavior of the tumor itself might be more important than the tumor diameter for the prognosis of SLHCC.

There were three major limitations of this study. First, the study was a retrospective analysis and the selection of patients and treatment methods were primarily based on the judgment and suggestions of surgeons, thus selection bias could not be completely avoided. Second, all the SLHCC patients were from a single center. Different centers may have different treatment options for SLHCC patients. Thus, the results of this study need to be verified by multi-center and large-sample data. Third, our OS and RFS nomograms lacked other groups for further validation, which should be undertaken in further studies.

In conclusion, radical surgical resection remains the preferred treatment for SLHCC patients regardless of the tumor stage. It is worth highlighting that sex, $TB \geq 17.1$ $\mu\text{mol/L}$, intraoperative blood loss ≥ 400 mL, Edmondson-Steiner grade III+IV, liver cirrhosis, $GGT > 60$ U/L, $LDH > 225$ U/L, MVI, and satellite lesions can act as independent risk factors affecting the prognosis of SLHCC patients. The OS and RFS nomograms based on the risk factors could accurately predict the prognosis of SLHCC patients and accurately distinguish patients with different risks of survival and recurrence. Thus, preoperative liver protection and enzyme reduction should be actively performed to improve liver function. Intraoperative bleeding should be controlled and R0 resection should be achieved. Postoperative follow-ups should be meticulously followed, with timely monitoring and treatment of recurring tumors. These recommendations can help to maximize the improvement of patient prognosis and facilitate better clinical management of SLHCC.

Abbreviations

SLHCC, Single large hepatocellular carcinoma; BCLC, Barcelona Clinic Liver Cancer; PLT, platelets; TB, total bilirubin; ALB, albumin; ALT, alanine transaminase; AST, aspartate aminotransferase; GGT, γ -glutamyl transferase; ALP, alkaline phosphatase; LDH, lactate dehydrogenase; AFP, alpha-fetoprotein; CA19-9, carbohydrate antigen 19-9; CEA, carcino-embryonic antigen; MVI, microvascular invasion; OS, overall survival; RFS, recurrence free survival.

Data Sharing Statement

The datasets used during the present study are available from the corresponding author upon reasonable request.

Ethics Approval and Informed Consent

This study was approved by the ethics committee of Eastern Hepatobiliary Surgery Hospital, and all patients signed informed documents.

Consent for Publication

Written informed consent for publication was obtained from all participants.

Acknowledgments

Thank all the staff authors for their contributions in this study.

Author Contributions

All authors made a significant contribution to the work reported, whether that is in the conception, study design, execution, acquisition of data, analysis and interpretation, or in all these areas; took part in drafting, revising or critically reviewing the article; gave final approval of the version to be published; have agreed on the journal to which the article has been submitted; and agree to be accountable for all aspects of the work.

Funding

This study was supported by the National Natural Science Foundation of China (81672721) and Meng Chao Talent Training Program (Ze-Ya Pan, Bei-Ge Jiang).

Disclosure

The authors declare that the research was conducted in the absence of any commercial or financial relationships that could be construed as a potential conflict of interest.

References

- Forner A, Reig M, Bruix J. Hepatocellular carcinoma. *Lancet*. 2018;391(10127):1301–1314. doi:10.1016/S0140-6736(18)30010-2
- Perz JF, Armstrong GL, Farrington LA, Hutin YJ, Bell BP. The contributions of hepatitis B virus and hepatitis C virus infections to cirrhosis and primary liver cancer worldwide. *J Hepatol*. 2006;45(4):529–538. doi:10.1016/j.jhep.2006.05.013
- Liu PH, Su CW, Hsu CY, et al. Solitary large hepatocellular carcinoma: staging and treatment strategy. *PLoS One*. 2016;11(5):e0155588. doi:10.1371/journal.pone.0155588
- Reig M, Forner A, Rimola J, et al. BCLC strategy for prognosis prediction and treatment recommendation: the 2022 update. *J Hepatol*. 2022;76(3):681–693. doi:10.1016/j.jhep.2021.11.018
- Zhao HC, Wu RL, Liu FB, et al. A retrospective analysis of long term outcomes in patients undergoing hepatic resection for large (>5 cm) hepatocellular carcinoma. *HPB*. 2016;18(11):943–949. doi:10.1016/j.hpb.2016.08.005
- Yang LY, Fang F, Ou DP, Wu W, Zeng ZJ, Wu F. Solitary large hepatocellular carcinoma: a specific subtype of hepatocellular carcinoma with good outcome after hepatic resection. *Ann Surg*. 2009;249(1):118–123. doi:10.1097/SLA.0b013e3181904988
- Tsilimigras DI, Bagante F, Sahara K, et al. Prognosis after resection of Barcelona Clinic Liver Cancer (BCLC) stage 0, A, and B hepatocellular carcinoma: a comprehensive assessment of the current BCLC classification. *Ann Surg Oncol*. 2019;26(11):3693–3700. doi:10.1245/s10434-019-07580-9
- Kim J, Kim JY, Lee JH, et al. Long-term outcomes of transarterial radioembolization for large single hepatocellular carcinoma: a comparison to resection. *J Nucl Med*. 2022;63(8):1215–1222. doi:10.2967/jnumed.121.263147
- Hanazaki K, Kajikawa S, Shimozaawa N, et al. Hepatic resection for large hepatocellular carcinoma. *Am J Surg*. 2001;181(4):347–353. doi:10.1016/S0002-9610(01)00584-0
- Fang KC, Kao WY, Su CW, et al. The prognosis of single large hepatocellular carcinoma was distinct from Barcelona clinic liver cancer stage A or B: the role of albumin-bilirubin grade. *Liver Cancer*. 2018;7(4):335–358. doi:10.1159/000487407
- Zhou L, Rui JA, Ye DX, Wang SB, Chen SG, Qu Q. Edmondson-Steiner grading increases the predictive efficiency of TNM staging for long-term survival of patients with hepatocellular carcinoma after curative resection. *World J Surg*. 2008;32(8):1748–1756. doi:10.1007/s00268-008-9615-8
- Hermanek P, Wittekind C. The pathologist and the residual tumor (R) classification. *Pathol Res Pract*. 1994;190(2):115–123. doi:10.1016/S0344-0338(11)80700-4
- Camp RL, Dolled-Filhart M, Rimm DL. X-tile: a new bio-informatics tool for biomarker assessment and outcome-based cut-point optimization. *Clin Cancer Res*. 2004;10(21):7252–7259. doi:10.1158/1078-0432.CCR-04-0713
- Forner A, Reig ME, de Lope CR, Bruix J. Current strategy for staging and treatment: the BCLC update and future prospects. *Semin Liver Dis*. 2010;30(1):61–74. doi:10.1055/s-0030-1247133
- European Association For The Study Of The L, European Organisation For R, Treatment Of C. EASL-EORTC clinical practice guidelines: management of hepatocellular carcinoma. *J Hepatol*. 2012;56(4):908–943. doi:10.1016/j.jhep.2011.12.001
- Eguchi S, Takatsuki M, Hidaka M, et al. Predictor for histological microvascular invasion of hepatocellular carcinoma: a lesson from 229 consecutive cases of curative liver resection. *World J Surg*. 2010;34(5):1034–1038. doi:10.1007/s00268-010-0424-5
- Pawlik TM, Delman KA, Vauthey JN, et al. Tumor size predicts vascular invasion and histologic grade: implications for selection of surgical treatment for hepatocellular carcinoma. *Liver Transpl*. 2005;11(9):1086–1092. doi:10.1002/lt.20472
- Jung YK, Jung CH, Seo YS, et al. BCLC stage B is a better designation for single large hepatocellular carcinoma than BCLC stage A. *J Gastroenterol Hepatol*. 2016;31(2):467–474. doi:10.1111/jgh.13152
- Huang J, Yang Y, Xia Y, et al. Prediction of patient survival following hepatic resection in early-stage hepatocellular carcinoma with indexed ratios of aspartate aminotransferase to platelets: a retrospective cohort study. *Cancer Manag Res*. 2021;13:1733–1746. doi:10.2147/CMAR.S284950
- Wang JC, Hou JY, Chen JC, et al. Development and validation of prognostic nomograms for single large and huge hepatocellular carcinoma after curative resection. *Eur J Cancer*. 2021;155:85–96. doi:10.1016/j.ejca.2021.07.009
- Wang H, Feng M, Jackson A, Ten Haken RK, Lawrence TS, Cao Y. Local and global function model of the liver. *Int J Radiat Oncol Biol Phys*. 2016;94(1):181–188. doi:10.1016/j.ijrobp.2015.09.044
- Zhang JP, Wang HB, Lin YH, et al. Lactate dehydrogenase is an important prognostic indicator for hepatocellular carcinoma after partial hepatectomy. *Transl Oncol*. 2015;8(6):497–503. doi:10.1016/j.tranon.2015.11.006
- Xia J, Song P, Sun Z, Sawakami T, Jia M, Wang Z. Advances of diagnostic and mechanistic studies of gamma-glutamyl transpeptidase in hepatocellular carcinoma. *Drug Discov Ther*. 2016;10(4):181–187. doi:10.5582/ddt.2016.01052
- Fukuda S, Itamoto T, Amano H, et al. Clinicopathologic features of hepatocellular carcinoma patients with compensated cirrhosis surviving more than 10 years after curative hepatectomy. *World J Surg*. 2007;31(2):345–352. doi:10.1007/s00268-006-0513-7
- Tanioka H, Omagari K, Kato Y, et al. Present status of hepatitis virus-associated hepatocellular carcinoma in Nagasaki Prefecture, Japan: a cross-sectional study of 1019 patients. *J Infect Chemother*. 2002;8(1):64–69. doi:10.1007/s101560200008
- Edmondson HA, Steiner PE. Primary carcinoma of the liver: a study of 100 cases among 48,900 necropsies. *Cancer*. 1954;7(3):462–503. doi:10.1002/1097-0142(195405)7:3<462::AID-CNCR2820070308>3.0.CO;2-E

27. Kim SU, Jung KS, Lee S, et al. Histological subclassification of cirrhosis can predict recurrence after curative resection of hepatocellular carcinoma. *Liver Int.* 2014;34(7):1008–1017. doi:10.1111/liv.12475
28. Katz SC, Shia J, Liao KH, et al. Operative blood loss independently predicts recurrence and survival after resection of hepatocellular carcinoma. *Ann Surg.* 2009;249(4):617–623. doi:10.1097/SLA.0b013e31819ed22f
29. Rahbari NN, Garden OJ, Padbury R, et al. Posthepatectomy liver failure: a definition and grading by the International Study Group of Liver Surgery (ISGLS). *Surgery.* 2011;149(5):713–724. doi:10.1016/j.surg.2010.10.001
30. Gouw AS, Balabaud C, Kusano H, Todo S, Ichida T, Kojiro M. Markers for microvascular invasion in hepatocellular carcinoma: where do we stand? *Liver Transpl.* 2011;17(Suppl 2):S72–S80. doi:10.1002/lt.22368
31. Feng LH, Dong H, Lau WY, et al. Novel microvascular invasion-based prognostic nomograms to predict survival outcomes in patients after R0 resection for hepatocellular carcinoma. *J Cancer Res Clin Oncol.* 2017;143(2):293–303. doi:10.1007/s00432-016-2286-1
32. Rodriguez-Peralvarez M, Luong TV, Andreana L, Meyer T, Dhillon AP, Burroughs AK. A systematic review of microvascular invasion in hepatocellular carcinoma: diagnostic and prognostic variability. *Ann Surg Oncol.* 2013;20(1):325–339. doi:10.1245/s10434-012-2513-1
33. Du M, Chen L, Zhao J, et al. Microvascular invasion (MVI) is a poorer prognostic predictor for small hepatocellular carcinoma. *BMC Cancer.* 2014;14:38. doi:10.1186/1471-2407-14-38
34. Kaibori M, Ishizaki M, Matsui K, Kwon AH. Predictors of microvascular invasion before hepatectomy for hepatocellular carcinoma. *J Surg Oncol.* 2010;102(5):462–468. doi:10.1002/jso.21631
35. Shen J, Wen T, Chen W, Lu C, Yan L, Yang J. Model predicting the microvascular invasion and satellite lesions of hepatocellular carcinoma after hepatectomy. *ANZ J Surg.* 2018;88(11):E761–E766. doi:10.1111/ans.14473
36. Li P, Huang W, Wang F, et al. Nomograms based on inflammatory biomarkers for predicting tumor grade and micro-vascular invasion in stage I/II hepatocellular carcinoma. *Biosci Rep.* 2018;38(6). doi:10.1042/BSR20180464
37. Ma X, Wei J, Gu D, et al. Preoperative radiomics nomogram for microvascular invasion prediction in hepatocellular carcinoma using contrast-enhanced CT. *Eur Radiol.* 2019;29(7):3595–3605. doi:10.1007/s00330-018-5985-y
38. Andreana L, Burroughs AK. Treatment of early hepatocellular carcinoma: how to predict and prevent recurrence. *Dig Liver Dis.* 2010;42(Suppl 3):S249–S257. doi:10.1016/S1590-8658(10)60513-0
39. Yeh CN, Chen MF, Lee WC, Jeng LB. Prognostic factors of hepatic resection for hepatocellular carcinoma with cirrhosis: univariate and multivariate analysis. *J Surg Oncol.* 2002;81(4):195–202. doi:10.1002/jso.10178
40. An C, Kim DW, Park YN, Chung YE, Rhee H, Kim MJ. Single hepatocellular carcinoma: preoperative MR imaging to predict early recurrence after curative resection. *Radiology.* 2015;276(2):433–443. doi:10.1148/radiol.15142394
41. Pandey D, Lee KH, Wai CT, Waghlikar G, Tan KC. Long term outcome and prognostic factors for large hepatocellular carcinoma (10 cm or more) after surgical resection. *Ann Surg Oncol.* 2007;14(10):2817–2823. doi:10.1245/s10434-007-9518-1
42. Plessier A, Codes L, Consigny Y, et al. Underestimation of the influence of satellite nodules as a risk factor for post-transplantation recurrence in patients with small hepatocellular carcinoma. *Liver Transpl.* 2004;10(2 Suppl 1):S86–S90. doi:10.1002/lt.20039
43. Hassan MM, Botrus G, Abdel-Wahab R, et al. Estrogen replacement reduces risk and increases survival times of women with hepatocellular carcinoma. *Clin Gastroenterol Hepatol.* 2017;15(11):1791–1799. doi:10.1016/j.cgh.2017.05.036
44. Xu XF, Xing H, Han J, et al. Risk factors, patterns, and outcomes of late recurrence after liver resection for hepatocellular carcinoma: a multicenter study from China. *JAMA Surg.* 2019;154(3):209–217. doi:10.1001/jamasurg.2018.4334
45. Lim C, Mise Y, Sakamoto Y, et al. Above 5 cm, size does not matter anymore in patients with hepatocellular carcinoma. *World J Surg.* 2014;38(11):2910–2918. doi:10.1007/s00268-014-2704-y

Publish your work in this journal

The Journal of Hepatocellular Carcinoma is an international, peer-reviewed, open access journal that offers a platform for the dissemination and study of clinical, translational and basic research findings in this rapidly developing field. Development in areas including, but not limited to, epidemiology, vaccination, hepatitis therapy, pathology and molecular tumor classification and prognostication are all considered for publication. The manuscript management system is completely online and includes a very quick and fair peer-review system, which is all easy to use. Visit <http://www.dovepress.com/testimonials.php> to read real quotes from published authors.

Submit your manuscript here: <https://www.dovepress.com/journal-of-hepatocellular-carcinoma-journal>