

How Does Chronobiology Contribute to the Development of Diseases in Later Life

Taylor A Stowe¹, Colleen A McClung^{1–3}

¹Department of Psychiatry, University of Pittsburgh School of Medicine, Pittsburgh, PA, USA; ²Translational Neuroscience Program, Department of Psychiatry, University of Pittsburgh School of Medicine, Pittsburgh, PA, USA; ³Center for Neuroscience, University of Pittsburgh, Pittsburgh, PA, USA

Correspondence: Colleen A McClung, Email mcclungca@upmc.edu

Abstract: An increasingly older population is one of the major social and medical challenges we currently face. Between 2010 and 2050, it is estimated that the proportion of adults over 65 years of age will double from 8% to 16% of the global population. A major concern associated with aging is the changes in health that can lead to various diseases such as cancer and neurodegenerative diseases, which are major burdens on individuals and societies. Thus, it is imperative to better understand changes in sleep and circadian rhythms that accompany aging to improve the health of an older population and target diseases associated with aging. Circadian rhythms play a role in most physiological processes and can contribute to age-related diseases. Interestingly, there is a relationship between circadian rhythms and aging. For example, many older adults have a shift in chronotype, which is an individual's natural inclination to sleep certain times of the day. As adults age, most people tend to go to sleep earlier while also waking up earlier. Numerous studies also suggest that disrupted circadian rhythms may be indicative of developing age-related diseases, like neurodegenerative disorders and cancer. Better understanding the relationship between circadian rhythms and aging may allow us to improve current treatments or develop novel ones that target diseases commonly associated with aging.

Keywords: circadian rhythms, aging, sleep, age-related diseases

Introduction

The General Role of Circadian Rhythms

Circadian rhythms are near 24-hour oscillations that exist in most biological processes such as sleep/wake cycles, hormone levels, attention, cognition, and mood across a 24-hour cycle.¹ These endogenous rhythms are important for survival because they allow organisms to synchronize their internal biological processes with external environmental cues, such as the light-dark cycle. This synchronization allows organisms to anticipate and prepare for changes in their environment, and to optimize their physiological and behavioral responses accordingly.² For example, circadian rhythms help organisms to adapt to changes in their environment, such as seasonal changes in light and temperature. Organisms can optimize their chances for survival and reproduction by adjusting their physiological and behavioral responses to changes. To maintain these rhythms, circadian clocks are found throughout the body and have a hierarchical timing system.^{3,4}

The suprachiasmatic nucleus (SCN), known as the master pacemaker, is in the dorsal hypothalamus and regulates behavioral and physiological rhythms (Figure 1).^{4–7} The SCN is unique in that it becomes entrained to the light cycles and receives direct projections from intrinsically photosensitive retinal ganglion cells (ipRGCs), which express the photoreceptor melanopsin.^{8–10} Melanopsin plays a key role in phototransduction functions such as circadian photoentrainment.^{11,12} Overall, the SCN receives light input, a potent timekeeper, to set the timing of rhythms by regulating neuronal activity, body temperature, and hormonal signals.^{13,14}

Individual cells have a molecular clock, which is an integral part of the circadian system (Figure 2). The molecular clock consists of a transcriptional/translational feedback loop that cycles over 24-hours in the absence of environmental stimuli.^{15–17} The major transcriptional activators consist of proteins Circadian Locomotor Output Cycles Kaput (CLOCK), or Neuronal PAS Domain Protein 2 (NPAS2), which bind to Brain and Muscle Arnt-like Protein 1 (BMAL1). These proteins heterodimerize to

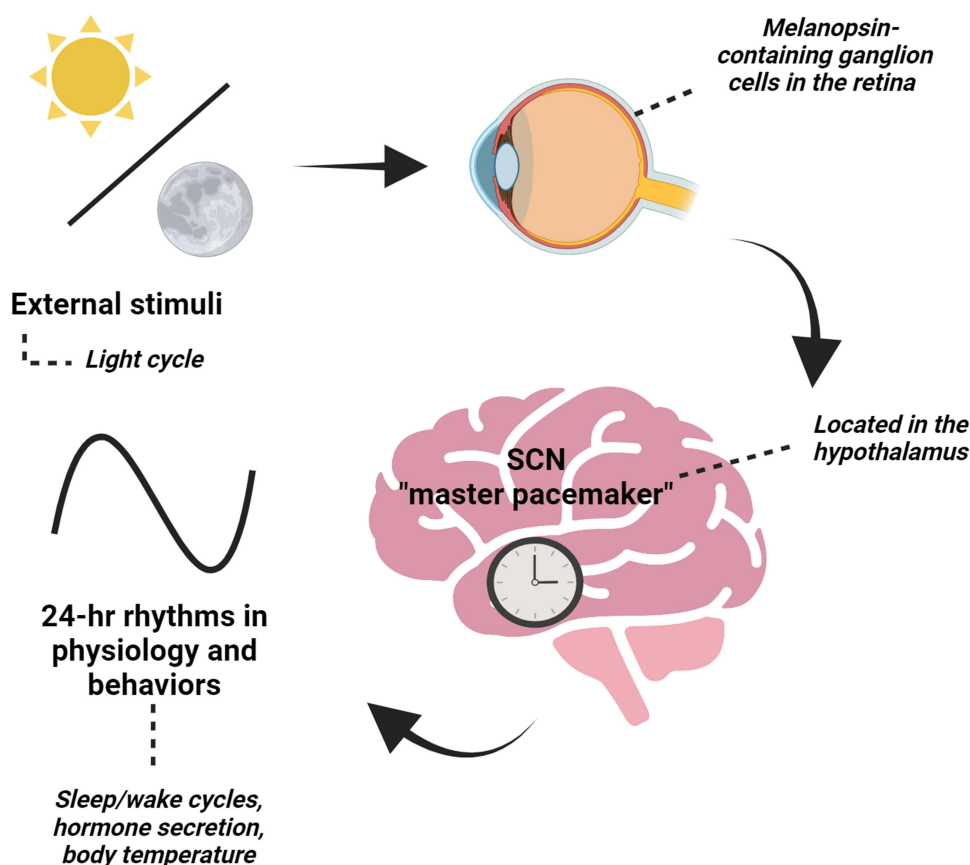


Figure 1 The suprachiasmatic nucleus (SCN), the “master” pacemaker, is located in the hypothalamus and is essential in setting 24-hr rhythms in behaviors and physiology based on external stimuli, like the light cycle. The SCN receives direct input from the retina of the eye through a specialized pathway known as the retinohypothalamic tract. When light enters the eye, it activates specialized photoreceptor cells called melanopsin-containing retinal ganglion cells. These cells then send signals to the SCN, which uses this information to adjust the body’s internal clock. Created with BioRender.com.

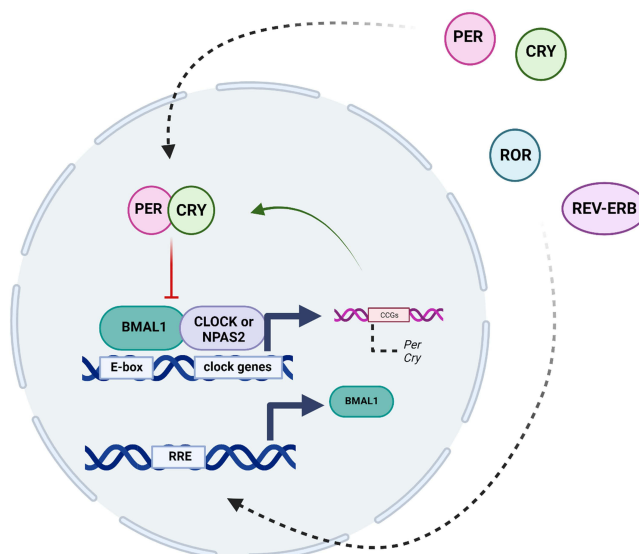


Figure 2 The molecular clock consists of a transcriptional/translational feedback loop that cycles over 24-hours in the absence of environmental stimuli. The main transcription factors are Circadian Locomotor Output Cycles Kaput (CLOCK), or Neuronal PAS Domain Protein 2 (NPAS2), which bind to Brain and Muscle Arnt-like Protein 1 (BMAL1). These proteins heterodimerize and promote transcription of the *Period* (*Per1*, *Per2*, *Per3*) and *Cryptochrome* (*Cry1*, *Cry2*) genes. PER and CRY proteins are phosphorylated inhibit the CLOCK/NPAS2-BMAL1 complex, which inhibits their own expression and creates a negative feedback loop. There are additional key regulators of the circadian clock, such as the nuclear receptors REV-ERB α and REV-ERB β , as well as the retinoic acid orphan receptor (ROR) (ROR α , ROR β , and ROR γ) establish another feedback loop. RORs positively regulate the expression of BMAL1 by binding to sites Retinoic acid receptor-related Orphan Receptor Element (RORE) elements in the *BMAL1* gene promoter. Created with BioRender.com.

recognize E-box motifs and regulate the expression of thousands of genes.¹⁸ Of these clock-controlled genes, there are *Period* (*Per1*, *Per2*, *Per3*) and *Cryptochrome* (*Cry1*, *Cry2*) genes that act as repressors.¹⁹ Within the 24-hour cycle, PER and CRY proteins in turn are phosphorylated and feed back into the nucleus to inhibit the transcriptional activity of the CLOCK/NPAS2-BMAL1 complex, which inhibits their own expression and creates a negative feedback loop.^{20,21} Additionally, there are further key regulators of the circadian clock, such as the nuclear receptors REV-ERB α and REV-ERB β , as well as the retinoic acid orphan receptor (ROR) (ROR α , ROR β , and ROR γ) establish another feedback loop.^{22,23} Specifically, while REV-ERBs act as transcriptional repressors of *BMAL1* expression, RORs positively regulate the expression of BMAL1 by binding to sites Retinoic acid receptor-related Orphan Receptor Element (RORE) elements in the *BMAL1* gene promoter. Overall, these transcriptional-translational feedback loops function in a cyclic fashion and are essential to the formation of biological rhythms.²²

The circadian system plays an essential role in maintaining health as circadian disruptions may lead to the development of diseases.^{24,25} For instance, limited studies suggest that shift work may be a risk factor for cardiovascular disease.²⁶ Furthermore, having later bedtimes can lead to an increase in the consumption of unhealthy foods, which cause an increase in body mass index.²⁷ Circadian rhythms are, thus, pervasive throughout systems and a variety of diseases.

Moreover, circadian rhythms can vary within individuals and begin to develop in infancy and change throughout the life cycle.^{28,29} For example, older individuals typically wake up earlier and go to sleep earlier in comparison to younger individuals.³⁰ Interestingly, aging can also lead to diseases such as cancer.³¹ Furthermore, changes in the circadian system and sleep patterns are associated with aging while circadian disruptions accelerate aging. There is, thus, a potential bidirectional relationship between the circadian system and aging. Here, we review the literature to better characterize this relationship between aging and the circadian system.

Normal Age-Related Changes in Circadian Changes and Sleep

Aging Impacts Circadian Rhythms

Numerous studies have suggested that aging is accompanied by dampened circadian rhythms and changes in sleep patterns (Figure 3). For example, it has been suggested that there is a decrease in amplitude and sleep becomes more fragmented with age.³⁰ However, these changes have not been consistent across studies as there may be several confounds, such as the short length of the studies.

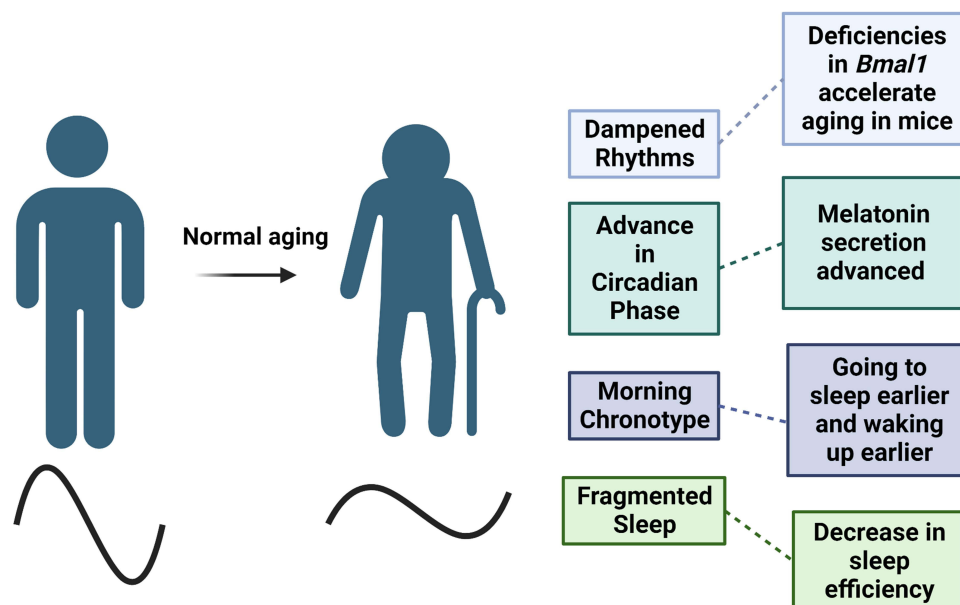


Figure 3 Normal aging is characterized by the dampening of circadian rhythms, which leads to shifts in phase and decreases in amplitude. These changes can also contribute to sleep characteristics as total sleep time and quality decreases with age. Created with BioRender.com.

One consistent change in the majority of people is a shift in circadian phase as one ages. For example, there is a prominent shift in timing of body temperature and hormone secretion one hour earlier in older individuals.^{32,33} A specific example is the one-hour advance in melatonin secretion, which is associated with circadian rhythms and plays an essential role in sleep.³⁴ The timing of melatonin secretion corresponds with the shifts in sleep-wake cycles. Moreover, previous studies suggested a decrease in melatonin levels exist in older adults; however, additional studies found that the levels of melatonin did not differ in healthy, older adults.³⁵

Furthermore, these advances in phase also correspond with changes in chronotype with adults 60 and older typically waking up earlier and going to sleep earlier compared to younger adults.³⁶ A self-comparison study in older adults found that the tendency to become a “morning person” increased with age.³⁷ Additionally, a longitudinal study tracked the chronotype of 567 adult men in Finland for over 20 years and found participants became “mostly morning” types as they aged.³⁸ Overall, biological shifts in circadian phase characterizes aging; however, aging also impairs one’s ability to adjust to environmental phase shifts.

As one ages, it becomes more difficult to adjust to schedule changes that may affect circadian phase. For example, chronic phase shifts caused adult rats to have longer periods of running rhythms in constant dark conditions while adolescent rats were able to adapt to chronic phase shifts.³⁹ Additionally, older mice required more days to “re-entrain” after shifts in phases.⁴⁰

Following phase advance, older adults had greater decreases in sleep efficiency, attention span, and body temperature amplitudes that persisted for a longer period of time in comparison to younger adults.^{41,42} In contrast, there were minimal differences between older and younger subjects following a phase delay.²⁶ Thus, similar to younger individuals, phase delays may be better tolerated by an older population.

Age-Related Changes in the Circadian Clock

Aging is characterized by dampened oscillations of the circadian clock. It has been thought that the SCN, the master pacemaker, may change and play a role in aging. When fetal tissue SCN was grafted into aged animals, there was a restoration of dampened rhythms and these animals had an increase in longevity.^{43,44} Moreover, manipulating clock genes in the SCN lead to changes in physiology and behavior that match the changes seen in aging.⁴⁵ Thus, the SCN plays a role within aging; however, the data vary on whether the SCN is vulnerable to age-related changes.

Age-related degradation exists at the network level in the SCN and the electrical output of the SCN is dampened with age.^{14,46} Additionally, it was found that the circadian amplitudes of neuronal firing were decreased in the SCN of older mice in comparison to younger ones.⁴⁷ These data collectively support that there are age-related changes occurring in the SCN.

However, core molecular clocks within the SCN seem to remain robust.^{48–51} Further supporting this, a recent study found mRNA and protein levels of clock genes in the SCN remained unchanged in older nonhuman primates.⁵² Although clock genes remain robust in the SCN in older individuals, there are impacts from aging on the clock genes in the periphery.⁵³ Aging has a negative effect on mRNA levels of *Bmal1*, *Clock*, *Per1*, and *Per2* in mouse granulosa cells as the mRNA levels were decreased in older mice in comparison to younger.^{14,54} Additionally, clock genes in the ovaries had shifts in rhythms with age.⁵⁴ Diurnal rhythms of *Bmal1*, *Per1*, and *Per2* were also dampened in the mouse heart.⁵⁵ However, not all cells/organs have clock genes affected by aging. For instance, no age-related variation was found in the clock genes of a rat kidney.⁵⁶ In contrast, a recent study found age-related declines in clock genes in male mice in the hypothalamus, which contains the central SCN clock, and five other peripheral tissues, lung, kidney, skeletal muscle, heart, and adrenal gland.⁵⁷ Thus, the effects of aging on clock genes may vary in different genes and throughout different cells and organs.

Interestingly, previous studies find that *Bmal1* plays a key role in aging. For instance, deletion of *Bmal1* leads to total loss of circadian rhythms and an increase in age-related diseases,^{58–60} and an additional study suggests that knocking out *Bmal1* leads to accelerated aging.⁶¹ Supporting this, further research found that *Bmal1* deficient cells had characteristics of aging,⁶² and mice with *Bmal1* deficiencies exhibited early aging and age-related pathologies.⁵⁸ Interestingly, mice with *Bmal1* deficiencies that were given antioxidant treatments had an increase in average life span.⁵⁹ It has also been found that mice with *Bmal1* deficiencies exhibit an increase in the activity of mTORC1, a protein complex that plays a crucial role

in regulating metabolic processes via the TOR pathway.⁶³ This increase in mTORC1 activity led to accelerated aging in *Bmal1* deficient mice, which supports that BMAL1 may be playing a role in aging via metabolic processes. Thus, normal aging is associated with potential changes in circadian genes, specifically *Bmal1*, which could lead to diseases later in life.

Aging Changes Sleep Patterns

One of the main regulators of sleep is the circadian timing system.^{64,65} Recent studies have shed light on the importance of sleep for the health and well-being of the older population.⁶⁶ Moreover, studies suggest that sleep changes with aging. For example, older adults have a decrease in total sleep time⁶⁷ and in sleep quality.^{68–70} Additionally, multiple studies support that deep sleep (slow wave sleep) decreases with age, and additional studies found decreases in slow wave sleep and changes in the brain in older individuals with no cognitive deficits.^{71,72}

Overall, there are often changes in sleep that occur with aging, but these changes could plateau at 60 years old if one maintains a healthy lifestyle. However, recent studies suggest that having impaired sleep and rhythms contribute to age-related disorders.^{73,74} For instance, sleep-wake disruptions are potentially correlated with an increase in biomarkers associated with Alzheimer's disease (AD).⁷⁵ Thus, comorbidities can enhance normal age-related changes in sleep, which could be indicative of age-related diseases.

Circadian Rhythms and Sleep Changes in Age-Related Diseases

Aberrations in Circadian Rhythms and Sleep in Neurodegenerative Disorders

Alzheimer's disease (AD) is a devastating disease that affects cognitive function and primarily occurs in older populations. Approximately 44 million people have Alzheimer's or related dementia, and this is estimated to reach about 135 million by 2050.^{76,77} Circadian dysfunction and sleep disruptions are the most common characteristics in patients with AD.⁷⁸ Previous survey results found that 45% of patients with Alzheimer's disease (AD) have circadian disruptions and fragmented sleep.⁶³ These disruptions can appear years prior to a medical diagnosis.⁷⁹

There is also a decrease in rapid eye movement (REM) and non-REM sleep that are associated with tau pathology in the early stages of Alzheimer's.⁷⁹ Additionally, REM sleep bouts are decreased in patients with AD in comparison to age matched controls.⁸⁰ Short and long sleep durations are also associated with worse outcomes for older adults, such as greater A β burden, greater depressive symptoms, higher body mass index, and cognitive decline.⁸¹ Interestingly, studies found decreases in slow wave sleep with aging occurred in individuals with no cognitive deficits,^{58,59} but were also associated with the early stages of Alzheimer's.^{61,62} Thus, it could be argued that sleep patterns changing with aging predict the risk of developing AD.

Furthermore, AD is characterized by dampened circadian rhythms. There is an overall decrease in amplitude and a delay in circadian phase.^{82,83} Additionally, a dampening and delay in rhythms increased the chances of developing AD.²⁵ Supporting this, a recent study found that there was a weakening in rhythms and activity as older individuals went from cognitive impairment to AD.⁶³ These studies collectively support that there may be an interaction between circadian disruptions and AD.

Moreover, initial studies found that there was degradation in the SCN in patients suffering from AD.²⁹ Specifically, it was suggested that patients with AD had the loss of critical neurons in the SCN. In contrast, a more recent study found no significant differences in major neurons in the SCN in non-AD and AD patients.⁸⁴ Although data varies on the role of the SCN in AD, there are potential changes in clock genes. For example, the rhythms of *BMAL1*, *PER1* and *CRY1* mRNA are lost in the pineal gland.⁸⁵ In AD patients, there are also changes in *BMAL1* mRNA expression that are complex, but the main differences are in the temporal phase relationship.^{30,86,87} Additionally, phosphorylated tau, a key pathological feature of AD, levels are increased in a mouse model of AD after chronic sleep deprivation and correlate to changes found in *Bmal1* expression.⁸⁸ These studies collectively support that the molecular clock is playing a role in AD.

In addition to AD, Parkinson's disorder (PD), the 2nd most common neurodegenerative disorder, may also be associated with abnormalities in circadian rhythms and sleep. For example, a rat model of PD found there was decreased expression of clock genes that could be restored with melatonin.⁸⁹ To follow up on this study, PD patients are treated

with melatonin and measured the expression of *BMAL1* and *PER1*.⁹⁰ At baseline, *BMAL1* was decreased and increased with melatonin while *PER1* remained the same. Thus, PD patients have altered levels of clock genes that can be restored with treatments that focus on circadian rhythms and sleep-wake cycles.

Additionally, there are variations in sleep characteristics in patients with PD. For example, male patients with Parkinson's had an increase in daytime sleeping and were more active at night.⁹¹ Specifically, men with excessive daytime sleepiness combined with daytime napping were 3 times more likely to develop PD. Additionally, patients with PD are commonly diagnosed with insomnia and tend to have problems staying asleep.⁹² However, this could be due to motor issues that happen during the night.⁹³

Furthermore, normal rhythms exist in rest-activity stages, but these rhythms are modified in patients with PD. Patients with mild to moderate PD have an overall decrease in motor activity but maintain diurnal rhythms. However, patients in the advanced stages of PD do not express diurnal rhythms in motor activity.^{94,95} Interestingly, a rat model of PD found overall activity was decreased, but there were no phase shifts and circadian rhythms were not disrupted.⁹⁶ Supporting this, additional studies did not find circadian disruptions in patients with PD; however, patients being treated with dopaminergic treatments have later sleep onset, severe insomnia, and an advance in circadian phase.^{92,97–99} Moreover, a recent study utilized bright light therapy for one hour during the evening hours in PD patients receiving dopamine treatment and found an improvement in sleep problems.⁸³

Thus, the phase shifts seen in patients with PD may be due to the dopaminergic treatments. Interestingly, male rats receiving a D1 dopamine agonist exhibit altered circadian genes in the SCN.¹⁰⁰ When given a D1 dopamine agonist in the morning, the expression in the SCN of *Per2* and *Clock* genes are increased and *Per1* and *Bmal1* are decreased in comparison to saline treatments. Receiving a D1 dopamine agonist in the evening had a decrease in the expression of *Per2*, *Clock*, *Per1*, and *Bmal1* in the SCN. These alterations in clock genes in the SCN may underlie the shifts in circadian phases in PD patients. Selecting the appropriate times in which dopaminergic treatments are received may improve symptoms. Furthermore, combining dopaminergic treatments with light therapies later in the evening may combat additional symptoms and help prevent additional phase shifting.

Disruptions in Circadian Rhythms and Sleep May Play a Role in Cancer

Cancer and aging are closely related as cancer frequency is higher in an older population in comparison to a younger one.¹⁰¹ In 2007, the International Agency for Research on Cancer (IARC) listed circadian disruptions as a probable carcinogen. Moreover, multiple studies propose that shift workers have a higher risk of developing cancer.^{102,103} For example, women who were nurses and did shift work for 30 years or more had a higher chance of developing breast cancer.^{104–106} A recent review examined about 26 studies focusing on shift work and breast cancer.¹⁰² Although the studies all varied, they collectively support that there is an increased risk of developing breast cancer after 20 years of shift work or after shorter periods with many consecutive nights of shift work.

Supporting these studies, research utilizing preclinical chronic jet lag models to disrupt circadian rhythms found that chronic jet lag may increase the chances of developing cancer. For example, chronic jet lag resulted in the deregulation of liver gene expression and metabolism that led to hepatocellular carcinoma.¹⁰⁷ Chronic jet lag also accelerated the progression of Glasgow osteosarcoma in comparison to mice that were not disrupted.¹⁰⁸ Recent studies found that chronic jet lag altered transcriptomes that have been linked to cancer-related pathways¹⁰⁹ and changed the expression of genes related to glioma in several brain regions.¹¹⁰ Thus, chronic circadian disruptions could increase the chances of one developing cancer later in life.

Data varies on the relationship between cancer and the circadian clock. For instance, single-nucleotide polymorphisms (SNP) in *CLOCK* and/or *BMAL1* genes are associated with an increase in susceptibility to develop prostate, breast, ovarian, and pancreatic cancer in humans.^{107,111,112} Additionally, suppression of *CLOCK* and *BMAL1* promotes tumor progression.^{113,114} However, tissue from breast cancer patients expressed significantly higher *CLOCK* gene expression in comparison to healthy controls.¹¹⁵ *CLOCK* is also upregulated in glioma tissues, which plays a role in proliferation, survival, and migration of glioma cells.^{116,117} The differences from these studies in *CLOCK* expression and regulation may be due to the different types of tissues from different cancers. Thus, circadian genes may vary based on types of tissue and cancer.

Moreover, evidence also suggests that *Cry* and *Per* genes play a role in cancer. Mutations in these genes have been linked to a variety of cancers, including breast cancer, prostate cancer, and glioblastoma. For example, *CRY1* was downregulated in human osteosarcoma cells.¹¹⁸ Additionally, *Per* and *Cry* genes may play a role in regulating cell proliferation, apoptosis, and DNA repair, which are all processes that can become dysregulated in cancer. For instance, mice with *Per2* loss-of-function mutations exhibited a greater occurrence of tumors following exposure to γ -irradiation compared to mice with normal *Per2* genes.¹¹⁹ Furthermore, the genes associated with cell proliferation, including c-myc, CyclinD1, and Gadd45, which are regulated by c-myc, were disrupted in *Per2* mutants. These data, thus, support that multiple parts of the molecular clock may be playing a role in cancer.

However, other studies suggest that circadian genes may not play a role in cancer. For example, *Clock* gene mutant mice were not more tumor prone.^{120–122} Additionally, the TCGA database suggests that mutations in core circadian genes are low in cancer patients. Some studies suggest that circadian gene alterations are a shared feature of tumors.¹²³ One thought could be that cancer is disrupting circadian rhythms, which leads to alterations in circadian genes that in turn enhance tumor progression. A recent study found that MYCN, a protein coding gene and hallmark of advanced neuroblastoma, disrupts the circadian clock.¹²⁴ Specifically, MYCN was found to upregulate REV-ERB α and down regulate ROR and *BMAL1*. ROR activity was able to rescue the MYCN-mediated repression of *BMAL1* expression. These data, thus, support that cancer may dysregulate the molecular clock. Overall, these data collectively support that there is a relationship between cancer and circadian rhythms and sleep.

The Role of Circadian Rhythms and Sleep in Cardiovascular Diseases

One of the major risk factors for heart failure and cardiovascular disease is aging.¹²⁵ The aging process can negatively affect the health of the heart and the arterial system. Indeed, there are increases in atherosclerosis, hypertension, myocardial infarction, and stroke in the older population.¹²⁶ Circadian rhythms also regulate the cardiovascular system and contribute to diseases. The core molecular clock is present in most cardiovascular cell types, which can function independently from the SCN.^{127–131}

These clocks mediate fluctuations in cardiovascular processes. For example, heart rate fluctuates throughout the day.¹³² Research suggests this may be due to the cardiomyocyte circadian clock as cardiomyocyte-specific *Clock* mutant mice have decreases in heart rate.¹³³ Additionally, circadian disruptions in animals can cause cardiomyopathy, cardiac fibrosis and systolic dysfunction, which can lead to cardiovascular death.^{134,135}

Similar to cancer studies, shift workers were found to have a higher chance of developing coronary heart diseases.¹³⁶ These data are consistent with a previous study that found a 23–24% increased risk of any coronary event in shift workers.¹³⁷ Additionally, a recent study on shift work found that disruption of circadian rhythms exacerbates reperfusion injury in myocardial infarction.¹³⁸ These compelling data support the potential relationship between circadian rhythms, aging and cardiovascular disease.

Conclusions

Bidirectional Relationship Between Aging and Circadian Rhythms

With our population having an increase in older adults, it is imperative to better characterize the bidirectional relationship between aging and circadian rhythms. There are changes in the circadian system and sleeping patterns that are commonly associated with aging and age-related diseases (Figure 4). Additionally, some changes may predict and contribute to age-related diseases such as neurodegenerative disorders and cancer.

However, it is unclear whether circadian and sleep disruptions are characteristic of aging or if these disruptions lead to accelerated aging and age-related diseases. Most age-related diseases are characterized by circadian and sleep disruptions. For example, individuals suffering from neurodegenerative disorders, like AD, tend to have exasperated disruptions in rhythms.³⁰ Moreover, sleeplessness can play a role in the immune system and heart diseases, which becomes worse in older populations. Better understanding whether changes in circadian rhythms and sleep problems are caused by aging or lead to age-related diseases may improve current treatments and ways to reduce the chances of developing these diseases.

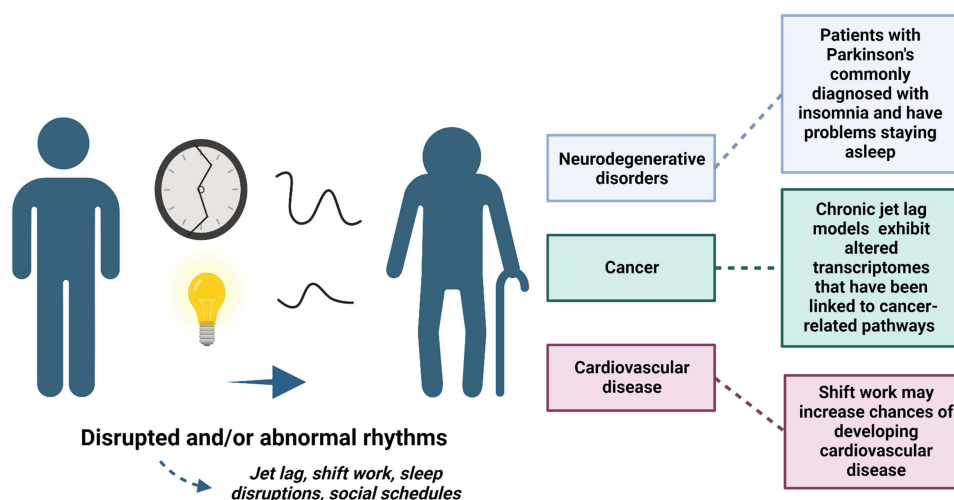


Figure 4 Disruptions in rhythms, like shift work, and abnormal rhythms can accelerate aging and lead to age-related diseases, like neurodegenerative disorders and cardiovascular disease. Differences in rhythms could also predict vulnerability to developing age-related diseases. Created with BioRender.com.

As our older population grows, modern society is also characterized by chronic disruptions, like shift work, to circadian rhythms and sleep patterns. Several studies suggest that circadian rhythm and sleep disruptions can accelerate aging and exacerbate age-related diseases. For example, shift workers have a potential increased chance of developing cancer, and multiple chronic jet lag studies suggest circadian disruptions increase the risk of developing cancer. Thus, circadian disruptions may lead to age-related diseases. Individuals may be able to improve their circadian rhythms and sleep patterns by avoiding light exposure and could also utilize bright light therapy. Better understanding the relationship between circadian rhythms and aging will allow us to better treat the older population but will also allow us characterize types of disruptions to lead to age-related diseases.

Acknowledgments

Our lab has work that has been supported by R01 MH11601 (Colleen McClung) and NIH T32HL082610-15.

Disclosure

The authors report no conflicts of interest in this work.

References

1. Bunney WE, Bunney BG. Molecular clock genes in man and lower animals: possible implications for circadian abnormalities in depression. *Neuropsychopharmacology*. 2000;22:335–345. doi:10.1016/S0893-133X(99)00145-1
2. Yerushalmi S, Green RM. Evidence for the adaptive significance of circadian rhythms. *Ecol Lett*. 2009;12:970–981. doi:10.1111/j.1461-0248.2009.01343.x
3. Patke A, Young MW, Axelrod S. Molecular mechanisms and physiological importance of circadian rhythms. *Nat Rev Mol Cell Biol*. 2020;21:67–84. doi:10.1038/s41580-019-0179-2
4. Zhang R, Lahens NF, Ballance HI, Hughes ME, Hogenesch JB. A circadian gene expression atlas in mammals: implications for biology and medicine. *Proc Natl Acad Sci*. 2014;111:16219–16224. doi:10.1073/pnas.1408886111
5. Welsh DK, Logothetis DE, Meister M, Reppert SM. Individual neurons dissociated from rat suprachiasmatic nucleus express independently phased circadian firing rhythms. *Neuron*. 1995;14:697–706. doi:10.1016/0896-6273(95)90214-7
6. King DP, Takahashi JS. Molecular genetics of circadian rhythms in mammals. *Annu Rev Neurosci*. 2000;23:713–742. doi:10.1146/annurev.neuro.23.1.713
7. Iijima M, Nikaido T, Akiyama M, Moriya T, Shibata S. Methamphetamine-induced, suprachiasmatic nucleus-independent circadian rhythms of activity and mPer gene expression in the striatum of the mouse. *Eur J Neurosci*. 2002;16:921–929.
8. Berson DM, Dunn FA, Takao M. Phototransduction by retinal ganglion cells that set the circadian clock. *Science*. 2002;295:1070–1073. doi:10.1126/science.1067262
9. Warren EJ, Allen CN, Brown RL, Robinson DW. Intrinsic light responses of retinal ganglion cells projecting to the circadian system. *Eur J Neurosci*. 2003;17:1727–1735. doi:10.1046/j.1460-9568.2003.02594.x
10. Dacey DM, Liao H-W, Peterson BB, et al. Melanopsin-expressing ganglion cells in primate retina signal colour and irradiance and project to the LGN. *Nature*. 2005;433:749–754. doi:10.1038/nature03387

11. Lucas RJ, Peirson SN, Berson DM, et al. Measuring and using light in the melanopsin age. *Trends Neurosci.* 2014;37:1–9.
12. Hankins MW, Peirson SN, Foster RG. Melanopsin: an exciting photopigment. *Trends Neurosci.* 2008;31:27–36. doi:10.1016/j.tins.2007.11.002
13. Hastings MH, Maywood ES, Brancaccio M. The mammalian circadian timing system and the suprachiasmatic nucleus as its pacemaker. *Biology.* 2019;8(13):13. doi:10.3390/biology8010013
14. Nakamura TJ, Nakamura W, Yamazaki S, et al. Age-related decline in circadian output. *J Neurosci.* 2011;31:10201–10205. doi:10.1523/JNEUROSCI.0451-11.2011
15. Reppert SM, Weaver DR. Coordination of circadian timing in mammals. *Nature.* 2002;418:935–941. doi:10.1038/nature00965
16. McClung CA, Rhythms C. the mesolimbic dopaminergic circuit, and drug addiction. *Sci World J.* 2007;7:194–202. doi:10.1100/tsw.2007.213
17. Ko CH, Takahashi JS. Molecular components of the mammalian circadian clock. *Hum Mol Genet.* 2006;15:R271–R277. doi:10.1093/hmg/ddl207
18. Koike N, Yoo S-H, Huang H-C, et al. Transcriptional architecture and chromatin landscape of the core circadian clock in mammals. *Science.* 2012;338:349–354. doi:10.1126/science.1226339
19. Aryal RP, Kwak PB, Tamayo AG, et al. Macromolecular assemblies of the mammalian circadian clock. *Mol Cell.* 2017;67:770–782.e6. doi:10.1016/j.molcel.2017.07.017
20. Yu W, Nomura M, Ikeda M. Interactivating feedback loops within the mammalian clock: BMAL1 is negatively autoregulated and upregulated by CRY1, CRY2, and PER2. *Biochem Biophys Res Commun.* 2002;290:933–941. doi:10.1006/bbrc.2001.6300
21. Takahashi JS. Molecular components of the circadian clock in mammals. *Diabetes Obes Metab.* 2015;17(Suppl 1):6–11. doi:10.1111/dom.12514
22. Partch CL, Green CB, Takahashi JS. Molecular architecture of the mammalian circadian clock. *Trends Cell Biol.* 2014;24:90–99. doi:10.1016/j.tcb.2013.07.002
23. Fagiani F, Di Marino D, Romagnoli A, et al. Molecular regulations of circadian rhythm and implications for physiology and diseases. *Signal Transduct Target Ther.* 2022;7. doi:10.1038/s41392-022-00899-y
24. Mormont M-C, Waterhouse J. Contribution of the rest–activity circadian rhythm to quality of life in cancer patients. *Chronobiol Int.* 2002;19:313–323. doi:10.1081/CBI-120002606
25. Tranah GJ, Blackwell T, Stone KL, et al. Circadian activity rhythms and risk of incident dementia and mild cognitive impairment in older women. *Ann Neurol.* 2011;70:722–732. doi:10.1002/ana.22468
26. Esquirol Y, Perret B, Ruidavets JB, et al. Shift work and cardiovascular risk factors: new knowledge from the past decade. *Arch Cardiovasc Dis.* 2011;104:636–668. doi:10.1016/j.acvd.2011.09.004
27. Baron KG, Reid KJ. Circadian misalignment and health. *Int Rev Psychiatry Abingdon Engl.* 2014;26:139–154. doi:10.3109/09540261.2014.911149
28. Logan RW, McClung CA. Rhythms of life: circadian disruption and brain disorders across the lifespan. *Nat Rev Neurosci.* 2019;20:49–65. doi:10.1038/s41583-018-0088-y
29. Werner H, LeBourgeois MK, Geiger A, Jenni OG. Assessment of chronotype in four- to eleven-year-old children: reliability and validity of the children's chronotype questionnaire (CCTQ). *Chronobiol Int.* 2009;26:992–1014. doi:10.1080/07420520903044505
30. Hood S, Amir S. The aging clock: circadian rhythms and later life. *J Clin Invest.* 2017;127:437–446. doi:10.1172/JCI90328
31. DePinho RA. The age of cancer. *Nature.* 2000;408:248–254. doi:10.1038/35041694
32. Duffy JF, Dijk D-J, Klerman EB, Czeisler CA. Later endogenous circadian temperature nadir relative to an earlier wake time in older people. *Am J Physiol Regul Integr Comp Physiol.* 1998;275:R1478–R1487. doi:10.1152/ajpregu.1998.275.5.R1478
33. Czeisler CA, Dumont M, Duffy JF, et al. Association of sleep-wake habits in older people with changes in output of circadian pacemaker. *Lancet.* 1992;340:933–936. doi:10.1016/0140-6736(92)92817-Y
34. Duffy JF, Zeitzer JM, Rimmer DW, et al. Peak of circadian melatonin rhythm occurs later within the sleep of older subjects. *Am J Physiol Endocrinol Metab.* 2002;282:E297–E303. doi:10.1152/ajpendo.00268.2001
35. Kin NY, Nair NMK, Schwartz NPV, Thavundayil G, Annable L. Secretion of melatonin in healthy elderly subjects: a longitudinal study. *Ann N Y Acad Sci.* 2004;1019:326–329.
36. Horne JA, Ostberg O. A self-assessment questionnaire to determine morningness-eveningness in human circadian rhythms. *Int J Chronobiol.* 1976;4:97–110.
37. Roenneberg T, Kuehnle T, Juda M, et al. Epidemiology of the human circadian clock. *Sleep Med Rev.* 2007;11:429–438. doi:10.1016/j.smrv.2007.07.005
38. Broms U, Pitkäniemi J, Bäckmand H, et al. Long-term consistency of diurnal-type preferences among men. *Chronobiol Int.* 2014;31:182–188. doi:10.3109/07420528.2013.836534
39. Albert N, da Silva C, Diez-Noguera A, Cambras T. Different adaptation of the motor activity rhythm to chronic phase shifts between adolescent and adult rats. *Behav Brain Res.* 2013;252:347–355.
40. Sellix MT, Evans JA, Leise TL, et al. Aging differentially affects the re-entrainment response of central and peripheral circadian oscillators. *J Neurosci.* 2012;32:16193–16202. doi:10.1523/JNEUROSCI.3559-12.2012
41. Monk TH, Buysse DJ, Reynolds CF, Kupfer DJ. Inducing jet lag in older people: adjusting to a 6-hour phase advance in routine. *Exp Gerontol.* 1993;28:119–133. doi:10.1016/0531-5565(93)90002-U
42. Monk TH, Kupfer DJ. Circadian rhythms in healthy aging—effects downstream from the pacemaker. *Chronobiol Int.* 2000;17:355–368. doi:10.1081/CBI-100101051
43. Li H, Satinoff E. Fetal tissue containing the suprachiasmatic nucleus restores multiple circadian rhythms in old rats. *Am J Physiol Regul Integr Comp Physiol.* 1998;275:R1735–R1744. doi:10.1152/ajpregu.1998.275.6.R1735
44. Hurd MW, Ralph MR. The significance of circadian organization for longevity in the golden hamster. *J Biol Rhythms.* 1998;13:430–436. doi:10.1177/074873098129000255
45. Swaab DF, Fliers E, Partiman TS. The suprachiasmatic nucleus of the human brain in relation to sex, age and senile dementia. *Brain Res.* 1985;342:37–44. doi:10.1016/0006-8993(85)91350-2
46. Roozendaal B, van Gool WA, Swaab DF, Hoogendijk JE, Mirmiran M. Changes in vasopressin cells of the rat suprachiasmatic nucleus with aging. *Brain Res.* 1987;409:259–264. doi:10.1016/0006-8993(87)90710-4

47. Nakamura TJ, Tokuda IT, Ishikawa T, et al. Age-related changes in the circadian system unmasked by constant conditions. *eNeuro*. 2015;2:64. doi:10.1523/ENEURO.0064-15.2015
48. Wyse CA, Coogan AN, Selman C, Hazlerigg DG, Speakman JR. Association between mammalian lifespan and circadian free-running period: the circadian resonance hypothesis revisited. *Biol Lett*. 2010;6:696–698. doi:10.1098/rsbl.2010.0152
49. Kolker DE, Vitaterna MH, Fruechte EM, Takahashi JS, Turek FW. Effects of age on circadian rhythms are similar in wild-type and heterozygous Clock mutant mice. *Neurobiol Aging*. 2004;25:517–523. doi:10.1016/j.neurobiolaging.2003.06.007
50. Chang H-C, Guarente L. SIRT1 mediates central circadian control in the SCN by a mechanism that decays with aging. *Cell*. 2013;153:1448–1460. doi:10.1016/j.cell.2013.05.027
51. Asai M, Yoshinobu Y, Kaneko S, et al. Circadian profile of Per gene mRNA expression in the suprachiasmatic nucleus, paraventricular nucleus, and pineal body of aged rats. *J Neurosci Res*. 2001;66:1133–1139. doi:10.1002/jnr.10010
52. Eghlidi DH, Luna SL, Brown DI, et al. Gene expression profiling of the SCN in young and old rhesus macaques. *J Mol Endocrinol*. 2018;61:57–67. doi:10.1530/JME-18-0062
53. Zhu Y, Liu Y, Escames G, et al. Deciphering clock genes as emerging targets against aging. *Ageing Res Rev*. 2022;81:101725.
54. Jiang Z, Zou K, Liu X, et al. Aging attenuates the ovarian circadian rhythm. *J Assist Reprod Genet*. 2021;38:33–40.
55. Bonaconsa M, Malpeli G, Montaruli A, et al. Differential modulation of clock gene expression in the suprachiasmatic nucleus, liver and heart of aged mice. *Exp Gerontol*. 2014;55:70–79. doi:10.1016/j.exger.2014.03.011
56. Jagota A, Thummadi NB, Kukkemane K. Chapter 20 - circadian regulation of hormesis for health and longevity. In: Rattan SIS, Kyriazis M, editors. *The Science of Hormesis in Health and Longevity*. Academic Press; 2019:223–233.
57. Wolff CA, Gutierrez-Monreal MA, Meng L, et al. Defining the age-dependent and tissue-specific circadian transcriptome in male mice. *Cell Rep*. 2023;42:111982.
58. Kondratov RV, Kondratova AA, Gorbacheva VY, Vykhovanets OV, Antoch MP. Early aging and age-related pathologies in mice deficient in BMAL1, the core component of the circadian clock. *Genes Dev*. 2006;20:1868–1873. doi:10.1101/gad.1432206
59. Kondratov RV, Vykhovanets O, Kondratova AA, Antoch MP. Antioxidant N-acetyl-L-cysteine ameliorates symptoms of premature aging associated with the deficiency of the circadian protein BMAL1. *Aging*. 2009;1:979–987. doi:10.18632/aging.100113
60. Bunker MK, Wilsbacher LD, Moran SM, et al. Mop3 is an essential component of the master circadian pacemaker in mammals. *Cell*. 2000;103:1009–1017.
61. Yang G, Chen L, Grant GR, et al. Timing of expression of the core clock gene Bmal1 influences its effects on aging and survival. *Sci Transl Med*. 2016;8:324ra16. doi:10.1126/scitranslmed.aad3305
62. Chhunchha B, Kubo E, Singh DP. Clock protein bmal1 and Nrf2 cooperatively control aging or oxidative response and redox homeostasis by regulating rhythmic expression of Prdx6. *Cells*. 2020;9:E1861.
63. Khapre RV, Kondratova AA, Patel S, et al. BMAL1-dependent regulation of the mTOR signaling pathway delays aging. *Aging*. 2014;6:48–57. doi:10.18632/aging.100633
64. Borbély AA. Sleep regulation: circadian rhythm and homeostasis. In: *Sleep*. editors, Ganten D, Pfaff D. Springer; 1982:83–103. doi:10.1007/978-3-642-68333-6_3
65. Dijk DJ, Czeisler CA. Contribution of the circadian pacemaker and the sleep homeostat to sleep propensity, sleep structure, electroencephalographic slow waves, and sleep spindle activity in humans. *J Neurosci*. 1995;15:3526–3538.
66. Suzuki K, Miyamoto M, Hirata K. Sleep disorders in the elderly: diagnosis and management. *J Gen Fam Med*. 2017;18:61–71.
67. Ohayon MM, Carskadon MA, Guilleminault C, Vitiello MV. Meta-analysis of quantitative sleep parameters from childhood to old age in healthy individuals: developing normative sleep values across the human lifespan. *Sleep*. 2004;27:1255–1273. doi:10.1093/sleep/27.7.1255
68. Redline S, Kirchner HL, Quan SF, et al. The effects of age, sex, ethnicity, and sleep-disordered breathing on sleep architecture. *Arch Intern Med*. 2004;164:406–418. doi:10.1001/archinte.164.4.406
69. Moraes W, Piovezan R, Poyares D, et al. Effects of aging on sleep structure throughout adulthood: a population-based study. *Sleep Med*. 2014;15:401–409. doi:10.1016/j.sleep.2013.11.791
70. Schwarz JFA, Åkerstedt T, Lindberg E, et al. Age affects sleep microstructure more than sleep macrostructure. *J Sleep Res*. 2017;26:277–287. doi:10.1111/jsr.12478
71. Varga AW, Wohlleber ME, Giménez S, et al. Reduced slow-wave sleep is associated with high cerebrospinal fluid Aβ42 levels in cognitively normal elderly. *Sleep*. 2016;39:2041–2048. doi:10.5665/sleep.6240
72. Baril -A-A, Beiser AS, Mysliwiec V, et al. Slow-wave sleep and MRI markers of brain aging in a community-based sample. *Neurology*. 2021;96:e1462–e1469. doi:10.1212/WNL.00000000000011377
73. Li J, Vitiello MV, Gooneratne N. Sleep in normal aging. *Sleep Med Clin*. 2018;13:1–11. doi:10.1016/j.jsmc.2017.09.001
74. Ju Y-ES, Videnovic A, Vaughn BV. Comorbid sleep disturbances in neurologic disorders. *Contin Lifelong Learn Neurol*. 2017;23(1117):1117–1131. doi:10.1212/CON.0000000000000501
75. Peter-Derex L, Yammine P, Bastuji H, Croisile B. Sleep and Alzheimer's disease. *Sleep Med Rev*. 2015;19:29–38. doi:10.1016/j.smrv.2014.03.007
76. Scheltens P, De Strooper B, Kivipelto M, et al. Alzheimer's disease. *Lancet Lond Engl*. 2021;397:1577–1590. doi:10.1016/S0140-6736(20)32205-4
77. Musiek ES, Xiong DD, Holtzman DM. Sleep, circadian rhythms, and the pathogenesis of Alzheimer Disease. *Exp Mol Med*. 2015;47:e148–e148. doi:10.1038/emmm.2014.121
78. Uddin MS, Tewari D, Mamun AA, et al. Circadian and sleep dysfunction in Alzheimer's disease. *Ageing Res Rev*. 2020;60(101046):101046. doi:10.1016/j.arr.2020.101046
79. Lucey BP, McCullough A, Landsness EC, et al. Reduced non-rapid eye movement sleep is associated with tau pathology in early Alzheimer's disease. *Sci Transl Med*. 2019;11:eaau6550.
80. Petit D, Gagnon J-F, Fantini ML, Ferini-Strambi L, Montplaisir J. Sleep and quantitative EEG in neurodegenerative disorders. *J Psychosom Res*. 2004;56:487–496. doi:10.1016/j.jpsychores.2004.02.001
81. Winer JR, Deters KD, Kennedy G, et al. Association of short and long sleep duration with amyloid-β burden and cognition in aging. *JAMA Neurol*. 2021;78:1–10. doi:10.1001/jamaneurol.2021.2876

82. Wilks H, Aschenbrenner AJ, Gordon BA, et al. Sharper in the morning: cognitive time of day effects revealed with high-frequency smartphone testing. *J Clin Exp Neuropsychol*. 2021;43:825–837. doi:10.1080/13803395.2021.2009447
83. Harper DG, Volicer L, Stopa EG, et al. Disturbance of endogenous circadian rhythm in aging and Alzheimer disease. *Am J Geriatr Psychiatry*. 2005;13:359–368. doi:10.1097/00019442-200505000-00004
84. Wang JL, Lim AS, Chiang W-Y, et al. Suprachiasmatic neuron numbers and rest-activity circadian rhythms in older humans. *Ann Neurol*. 2015;78:317–322. doi:10.1002/ana.24432
85. Wu Y-H, Fischer DF, Kalsbeek A, et al. Pineal clock gene oscillation is disturbed in Alzheimer's disease, due to functional disconnection from the 'master clock'. *FASEB J off Publ Fed Am Soc Exp Biol*. 2006;20:1874–1876.
86. Cermakian N, Waddington Lamont E, Boudreau P, Boivin DB. Circadian clock gene expression in brain regions of Alzheimer's disease patients and control subjects. *J Biol Rhythms*. 2011;26:160–170. doi:10.1177/0748730410395732
87. Weissová K, Bartoš A, Sládek M, Nováková M, Moderate SA. Changes in the circadian system of Alzheimer's disease patients detected in their home environment. *PLoS One*. 2016;11(e0146200):e0146200. doi:10.1371/journal.pone.0146200
88. Niu L, Zhang F, Xu X, et al. Chronic sleep deprivation altered the expression of circadian clock genes and aggravated Alzheimer's disease neuropathology. *Brain Pathol*. 2021;32(e13028). doi:10.1111/bpa.13028
89. Mattam U, Jagota A. Daily rhythms of serotonin metabolism and the expression of clock genes in suprachiasmatic nucleus of rotenone-induced Parkinson's disease male Wistar rat model and effect of melatonin administration. *Biogerontology*. 2015;16:109–123. doi:10.1007/s10522-014-9541-0
90. Delgado-Lara DL, González-Enríquez GV, Torres-Mendoza BM, et al. Effect of melatonin administration on the PER1 and BMAL1 clock genes in patients with Parkinson's disease. *Biomed Pharmacother Biomedicine Pharmacother*. 2020;129:110485.
91. Leng Y, Goldman SM, Cawthon PM, et al. Excessive daytime sleepiness, objective napping and 11-year risk of Parkinson's disease in older men. *Int J Epidemiol*. 2018;47:1679–1686. doi:10.1093/ije/dyy098
92. Zhu K, van Hilten JJ, Marinus J. The course of insomnia in Parkinson's disease. *Parkinsonism Relat Disord*. 2016;33:51–57. doi:10.1016/j.parkreldis.2016.09.010
93. van Hilten JJ, Hoff JJ, Middelkoop HA, Roos RA. The clinimetrics of hypokinesia in Parkinson's disease: subjective versus objective assessment. *J Neural Transm Park Dis Dement Sect*. 1994;8:117–121. doi:10.1007/BF02250922
94. Hilten J, Hoogland G, van der Velde EA, et al. Diurnal effects of motor activity and fatigue in Parkinson's disease. *J Neurol Neurosurg Psychiatry*. 1993;56:874–877. doi:10.1136/jnnp.56.8.874
95. van Hilten JJ, van Dijk JG, Dunnewold RJ, et al. Diurnal variation of essential and physiological tremor. *J Neurol Neurosurg Psychiatry*. 1991;54:516–519. doi:10.1136/jnnp.54.6.516
96. Baier PC, Branisa P, Koch R, et al. Circadian distribution of motor-activity in unilaterally 6-hydroxy-dopamine lesioned rats. *Exp Brain Res*. 2006;169:283–288. doi:10.1007/s00221-005-0343-0
97. Boliitho SJ, Naismith SL, Rajaratnam SMW, et al. Disturbances in melatonin secretion and circadian sleep–wake regulation in Parkinson disease. *Sleep Med*. 2014;15:342–347. doi:10.1016/j.sleep.2013.10.016
98. Bordet R. Addiction, experimental models and neurobiological mechanisms. *Therapie*. 2015;70:133–146. doi:10.2515/therapie/2014222
99. Breen DP, Vuono R, Nawarathna U, et al. Sleep and circadian rhythm regulation in early Parkinson disease. *JAMA Neurol*. 2014;71:589–595. doi:10.1001/jamaneurol.2014.65
100. Mesgar S, Jameie SB, Aliaghaei A, et al. Dopamine D1 receptor-mediated regulation of per1, per2, CLOCK, and BMAL1 expression in the suprachiasmatic nucleus in adult male rats. *J Mol Neurosci*. 2022;72:618–625. doi:10.1007/s12031-021-01923-6
101. Berger NA, Savvides P, Koroukian SM, et al. Cancer in the elderly. *Trans Am Clin Climatol Assoc*. 2006;117:147–156.
102. Hansen J. Night shift work and risk of breast cancer. *Curr Environ Health Rep*. 2017;4:325–339. doi:10.1007/s40572-017-0155-y
103. Zhou L, Zhang Z, Nice E, et al. Circadian rhythms and cancers: the intrinsic links and therapeutic potentials. *J Hematol Oncol J Hematol Oncol*. 2022;15:21.
104. Lie J-AS, Roessink J, Kjaerheim K. Breast cancer and night work among Norwegian nurses. *Cancer Causes Control CCC*. 2006;17:39–44. doi:10.1007/s10552-005-3639-2
105. Schernhammer ES, Laden F, Speizer FE, et al. Rotating night shifts and risk of breast cancer in women participating in the nurses' health study. *J Natl Cancer Inst*. 2001;93:1563–1568. doi:10.1093/jnci/93.20.1563
106. Knutsson A, Alfredsson L, Karlsson B, et al. Breast cancer among shift workers: results of the WOLF longitudinal cohort study. *Scand J Work Environ Health*. 2013;39:170–177. doi:10.5271/sjweh.3323
107. Kettner NM, Katchy CA, Fu L. Circadian gene variants in cancer. *Ann Med*. 2014;46:208–220. doi:10.3109/07853890.2014.914808
108. Filipski E, Delaunay F, King VM, et al. Effects of chronic jet lag on tumor progression in mice. *Cancer Res*. 2004;64:7879–7885. doi:10.1158/0008-5472.CAN-04-0674
109. Khan S, Yong VW, Xue M. Circadian disruption in mice through chronic jet lag-like conditions modulates molecular profiles of cancer in nucleus accumbens and prefrontal cortex. *Carcinogenesis*. 2021;42:864–873. doi:10.1093/carcin/bgab012
110. Khan S, Liu Y, Siddique R, et al. Impact of chronically alternating light-dark cycles on circadian clock mediated expression of cancer (glioma)-related genes in the brain. *Int J Biol Sci*. 2019;15:1816–1834. doi:10.7150/ijbs.35520
111. Angelousi A, Kassi E, Ansari-Nasiri N, et al. Clock genes and cancer development in particular in endocrine tissues. *Endocr Relat Cancer*. 2019;26:R305–R317. doi:10.1530/ERC-19-0094
112. Cadenas C, van de Sandt L, Edlund K, et al. Loss of circadian clock gene expression is associated with tumor progression in breast cancer. *Cell Cycle*. 2014;13:3282–3291. doi:10.4161/15384101.2014.954454
113. Liu Y, Hao J, Yuan G, et al. PER1 as a tumor suppressor attenuated in the malignant phenotypes of breast cancer cells. *Int J Gen Med*. 2021;14:7077–7087. doi:10.2147/IJGM.S328184
114. Jiang W, Zhao S, Jiang X, et al. The circadian clock gene Bmal1 acts as a potential anti-oncogene in pancreatic cancer by activating the p53 tumor suppressor pathway. *Cancer Lett*. 2016;371:314–325. doi:10.1016/j.canlet.2015.12.002
115. Hoffman AE, Yi C-H, Zheng T, et al. CLOCK in breast tumorigenesis: genetic, epigenetic, and transcriptional profiling analyses. *Cancer Res*. 2010;70:1459–1468. doi:10.1158/0008-5472.CAN-09-3798

116. Wang Z, Su G, Dai Z, et al. Circadian clock genes promote glioma progression by affecting tumour immune infiltration and tumour cell proliferation. *Cell Prolif*. 2021;54:e12988. doi:10.1111/cpr.12988
117. Li A, Lin X, Tan X, et al. Circadian gene Clock contributes to cell proliferation and migration of glioma and is directly regulated by tumor-suppressive miR-124. *FEBS Lett*. 2013;587:2455–2460. doi:10.1016/j.febslet.2013.06.018
118. Zhou L, Yu Y, Sun S, Zhang T, Wang M. Cry 1 regulates the clock gene network and promotes proliferation and migration via the Akt/P53/P21 pathway in human osteosarcoma cells. *J Cancer*. 2018;9:2480–2491. doi:10.7150/jca.25213
119. Fu L, Pelicano H, Liu J, Huang P, Lee CC. The circadian gene period2 plays an important role in tumor suppression and DNA damage response in vivo. *Cell*. 2002;111:41–50. doi:10.1016/S0092-8674(02)00961-3
120. Antoch MP, Gorbacheva VY, Vykhovanets O, et al. Disruption of the circadian clock due to the Clock mutation has discrete effects on aging and carcinogenesis. *Cell Cycle Georget Tex*. 2008;7:1197–1204. doi:10.4161/cc.7.9.5886
121. Antoch MP, Toshkov I, Kuropatwinski KK, Jackson M. Deficiency in PER proteins has no effect on the rate of spontaneous and radiation-induced carcinogenesis. *Cell Cycle Georget Tex*. 2013;12:3673–3680. doi:10.4161/cc.26614
122. Sancar A, Van Gelder RN. Clocks, cancer, and chronotherapy. *Science*. 2021;371:eabb0738. doi:10.1126/science.abb0738
123. Sulli G, Lam MTY, Panda S. Interplay between circadian clock and cancer: new frontiers for cancer treatment. *Trends Cancer*. 2019;5:475–494. doi:10.1016/j.trecan.2019.07.002
124. Moreno-Smith M, Milazzo G, Tao L, et al. Restoration of the molecular clock is tumor suppressive in neuroblastoma. *Nat Commun*. 2021;12. doi:10.1038/s41467-021-24196-4
125. Li H, Hastings MH, Rhee J, et al. Targeting age-related pathways in heart failure. *Circ Res*. 2020;126:533–551. doi:10.1161/CIRCRESAHA.119.315889
126. Lakatta EG, Levy D. Arterial and cardiac aging: major shareholders in cardiovascular disease enterprises: part I: aging arteries: a ‘set up’ for vascular disease. *Circulation*. 2003;107:139–146. doi:10.1161/01.CIR.0000048892.83521.58
127. Beesley S, Noguchi T, Welsh DK. Cardiomyocyte circadian oscillations are cell-autonomous, amplified by β -adrenergic signaling, and synchronized in cardiac ventricle tissue. *PLoS One*. 2016;11:e0159618. doi:10.1371/journal.pone.0159618
128. Maemura K, Takeda N, Nagai R. Circadian rhythms in the CNS and peripheral clock disorders: role of the biological clock in cardiovascular diseases. *J Pharmacol Sci*. 2007;103:134–138. doi:10.1254/jphs.FMJ06003X2
129. Takeda N, Maemura K. Circadian clock and cardiovascular disease. *J Cardiol*. 2011;57:249–256. doi:10.1016/j.jcc.2011.02.006
130. Lin C, Tang X, Zhu Z, et al. The rhythmic expression of clock genes attenuated in human plaque-derived vascular smooth muscle cells. *Lipids Health Dis*. 2014;13(14). doi:10.1186/1476-511X-13-14
131. Davidson AJ, London B, Block GD, Menaker M. Cardiovascular tissues contain independent circadian clocks. *Clin Exp Hypertens N Y N*. 2005;27:307–311.
132. Millar-Craig MW, Bishop CN, Raftery EB. Circadian variation of blood-pressure. *Lancet Lond Engl*. 1978;1:795–797. doi:10.1016/S0140-6736(78)92998-7
133. Bray MS, Shaw CA, Moore MWS, et al. Disruption of the circadian clock within the cardiomyocyte influences myocardial contractile function, metabolism, and gene expression. *Am J Physiol Heart Circ Physiol*. 2008;294:H1036–H1047. doi:10.1152/ajpheart.01291.2007
134. Penev PD, Kolker DE, Zee PC, Turek FW. Chronic circadian desynchronization decreases the survival of animals with cardiomyopathic heart disease. *Am J Physiol*. 1998;275:H2334–H2337. doi:10.1152/ajpheart.1998.275.6.H2334
135. Martino TA, Oudit GY, Herzenberg AM, et al. Circadian rhythm disorganization produces profound cardiovascular and renal disease in hamsters. *Am J Physiol Regul Integr Comp Physiol*. 2008;294:R1675–R1683. doi:10.1152/ajpregu.00829.2007
136. Vetter C, Devore EE, Wegrzyn LR, et al. Association between rotating night shift work and risk of coronary heart disease among women. *JAMA*. 2016;315:1726–1734. doi:10.1001/jama.2016.4454
137. Vyas MV, Garg AX, Iansavichus AV, et al. Shift work and vascular events: systematic review and meta-analysis. *BMJ*. 2012;345:e4800. doi:10.1136/bmj.e4800
138. Zhao Y, Lu X, Wan F, et al. Disruption of circadian rhythms by shift work exacerbates reperfusion injury in myocardial infarction. *J Am Coll Cardiol*. 2022;79:2097–2115. doi:10.1016/j.jacc.2022.03.370

Clinical Interventions in Aging

Dovepress

Publish your work in this journal

Clinical Interventions in Aging is an international, peer-reviewed journal focusing on evidence-based reports on the value or lack thereof of treatments intended to prevent or delay the onset of maladaptive correlates of aging in human beings. This journal is indexed on PubMed Central, MedLine, CAS, Scopus and the Elsevier Bibliographic databases. The manuscript management system is completely online and includes a very quick and fair peer-review system, which is all easy to use. Visit <http://www.dovepress.com/testimonials.php> to read real quotes from published authors.

Submit your manuscript here: <https://www.dovepress.com/clinical-interventions-in-aging-journal>