

# Prevalence and Antimicrobial Resistance of *Campylobacter* Species and Associated Factors Among Under-Five Children with Diarrhea at Randomly Selected Public Health Facilities in Mekelle, Tigray, Ethiopia

Kebede Araya Abay<sup>1</sup>, Girmay Desalegn<sup>2</sup>, Yemane Weldu<sup>2</sup>, Gebrecherkos Teame Gebrehiwot<sup>3</sup>, Gebreselema Gebreyohannes<sup>4</sup>, Letemicheal Negash Welekidan<sup>2</sup>, Kibra Hailu Desta<sup>2</sup>, Yohanns Tekle Asfaw<sup>5</sup>, Ataklti Gessese Teka<sup>3</sup>, Mulugeta Tilahun Gebremedhin<sup>3</sup>

<sup>1</sup>Department of Microbiology and Immunology, Dr. Tewelde Legesse College of Health Sciences, Mekelle, Tigray, Ethiopia; <sup>2</sup>Department of Medical Microbiology and Immunology, College of Health Sciences, Mekelle University, Mekelle, Tigray, Ethiopia; <sup>3</sup>Department of Biomedical Research and Technology Transfer, Tigray Health Research Institute, Mekelle, Tigray, Ethiopia; <sup>4</sup>Department of Biological and Chemical Engineering, Mekelle Institute of Technology, Mekelle University, Mekelle, Tigray, Ethiopia; <sup>5</sup>Department of Veterinary Medicine, College of Animal Health, Mekelle University, Mekelle, Tigray, Ethiopia

Correspondence: Gebrecherkos Teame Gebrehiwot, Email [cherkos77kga@gmail.com](mailto:cherkos77kga@gmail.com)

**Background:** *Campylobacter* species are the most predominant bacterial agents to cause diarrhea in under-five children. It poses a serious challenge to public health worldwide with ongoing acquisition of resistance to different antimicrobials with multiple patterns. Thus, this study aimed to determine the prevalence, and antimicrobial resistance of *Campylobacter* species, and associated factors among under-five children with diarrhea in selected public health facilities.

**Methods:** A cross-sectional study was conducted among under-five children with diarrhea using convenient sampling. Health facilities were selected using a simple random sampling method. The stool samples collected from 214 study participants were transported and processed following standard microbiological protocols. *Campylobacter* isolates were identified using Gram staining, biochemical test, serological test, and aerobic growth at 25°C. Antimicrobial susceptibility profiles of isolates were performed using the Kirby–Bauer method. Data were analyzed using SPSS ver. 25.0. Association between variables was assessed using Chi-square test and Logistic regression, with  $P \leq 0.05$ .

**Results:** The subject's mean age was 31.3 ( $\pm 3.9$ ) months. Of the 214 samples cultured, 14 (6.5%) of them were positive for *Campylobacter* species with 95% CI (3.3–10.3). Out of the isolated species, 12 (85.7%) were *Campylobacter jejuni* / *Campylobacter coli* and 2 (14.3%) were other *Campylobacter* species. Bottle feeding and history of direct contact to domestic animals were associated with *Campylobacter* species (AOR=5.13, CI=1.21–21.6,  $p=0.026$  and AOR=4.93, CI=1.33–18.17,  $P=0.016$ ), respectively. *Campylobacter* isolates were highly resistant to ciprofloxacin 5 (35.7%), and tetracycline 3 (21.4%).

**Conclusion:** A higher incidence of *Campylobacter* species was obtained in children who were bottle-fed and who had a history of direct contact with domestic animals. The isolates were highly resistant to ciprofloxacin and tetracycline. These findings indicate that special attention is needed for better management of *Campylobacter* drug resistance in under-five children. To enhance and support our current findings, further research using molecular techniques is needed to identify the resistant and virulent genes of the bacterial isolates.

**Keywords:** *Campylobacter* species, drug susceptibility, gastroenteritis, Mekelle city, prevalence, risk factors, under-five children

## Introduction

Diarrhea is the passage of high fluid content of stool or an abnormal increase in daily stool frequency.<sup>1</sup> Diarrheal illness is a major health problem in the world, principally in low- and middle-income countries.<sup>2,3</sup> It is the second most

important infectious cause of death, accounting for 9.2% of deaths in under-five children across the globe.<sup>1,4</sup> Of these, 90% of the death rate among under-five children due to diarrhea happens in low- and middle-income countries,<sup>5</sup> and 46% in African continents.<sup>6</sup>

Acute gastroenteritis (AGE) is the irritation of the mucous membranes covering the digestive tract that leads to vomiting and diarrhea.<sup>7</sup> Globally, AGE affects an estimated 2.5 billion and kills nearly 1.5 million children under five years old each year.<sup>8</sup> AGE contributes to the mortality of under-five children by about 5–20% and 5–35% in developed and developing countries, respectively.<sup>8,9</sup> About 10–20% of all AGE are caused by acute bacterial gastroenteritis. *Campylobacter* is one of the most recognized etiologies of AGE.<sup>10,11</sup> Moreover, it is a principal cause of food-borne infection.<sup>12</sup> *Campylobacter jejuni* is the most commonly isolated *Campylobacter* species, which causes human gastroenteritis.<sup>13,14</sup>

*Campylobacter* is an animal pathogen that commonly inhabits the intestine of numerous animal species. *Campylobacter* infection is mostly a foodborne illness that leads to inflammation of the human intestine.<sup>15,16</sup> Ingestion of contaminated uncooked food (eg milk), drinking polluted water, contact with domestic animals and diarrheal persons, poor personal hygiene, and improper use of latrine are the key risk factors of *Campylobacter* species.<sup>16</sup>

In several countries, *Campylobacter* antimicrobial resistance is common and leads to traveler's infection.<sup>17</sup> In the United States of America, about 23% and 2% of *Campylobacter* species are resistant to ciprofloxacin and azithromycin, respectively. In 2017 WHO reported that *Campylobacter* species were recorded as one of six high-priority antibiotic-resistant pathogens.<sup>18,19</sup> The main causes for the development of antimicrobial resistance are prescribing and use of ineffective antimicrobials (accounts for about 50%), irrational use of antimicrobials, the person-to-person spread of bacterial-resistant strains,<sup>20</sup> and common use of antimicrobials as treatment for both animals and humans.<sup>21–23</sup>

In Ethiopia, diarrheal diseases are the major causes of infant and child mortality and morbidity.<sup>24</sup> In Ethiopia, around 39 million diarrheal episodes occur every year, of which 230 thousand children die because of it.<sup>25</sup> The prevalence of *Campylobacter* species among under-five children with diarrhea is around 14.5% of which *Campylobacter jejuni* and *Campylobacter coli* account for 71.1% and 21.1%, respectively.<sup>26–28</sup>

Although *Campylobacter* diarrheal disease among under-five years of age is a huge problem in Ethiopia, particularly in Tigray, to our knowledge to date, few studies have been conducted to look into the prevalence, antimicrobial resistance, and associated factors with the incidence of campylobacteriosis. Thus, this study was conducted to determine the prevalence of *Campylobacter* species and associated factors among children under-five years of age who visited Mekelle General Hospital, Mekelle Health Center, Semen Health Center, and Kasech Asfaw Health Center. This study will help to recognize the prevalence, antimicrobial resistance, and risk factors of diarrheal diseases that enable the concerned bodies to develop appropriate interventions.

## Materials and Methods

### Study Area

The study was conducted in Mekelle city, which is the regional capital city of Tigray. Mekelle city is found around 780 km drive north of the national capital city, Addis Ababa. Geographically it is located between 130° 24' 30" to 130° 36' 52" Longitude and 39° 25' 30" to 39° 38' 33" Latitude. Its altitude ranges from 2200 m above sea level. According to the Central Statistical Agency of Tigray, Mekelle has an estimated total population of 537,822. Mekelle owns one specialized hospital, two general hospitals, one primary hospital, and five health centers.<sup>25,29</sup> The study was conducted among randomly selected four public health facilities through a simple random sampling (lottery) method due to resource scarcity to encompass all.

### Study Design and Period

A cross-sectional study design was used to conduct this research.

## Study Population

All under-five children with diarrhea who visited any one of the four health facilities in Mekelle were used as study population.

## Inclusion and Exclusion Criteria

All under-five children (0–60 months) with diarrhea and their parents or caregivers who were willing to provide written and oral consent to participate their child in the study were included, whereas severely ill under-five children were excluded.

## Sampling Technique and Sample Size Determination

A convenient sampling technique was employed for the patient that fulfilled the inclusion criteria during the study period. Based on a previous prevalence rate of 16.7% from Jimma, Ethiopia,<sup>30</sup> a 95% confidence interval, and a 5% margin of error, the sample size was determined using a single population proportion formula:

$$n = Z^2 p (1 - p) / d^2$$

From this calculation, about 214 children were included in the study of which 60 were from Mekelle General Hospital, 62 from Mekelle Health Center, 39 from Semen Health Center, and 52 from Kasech Asfaw Health Center.

## Study Variables

The prevalence of *Campylobacter* species and the status of antimicrobial resistance were taken as outcome variables, whereas socio-demographic variables (age, sex, residence, and educational and occupational status of caregivers), environmental variables (water source, exposure to domestic animals, contact history with a diarrheal person), and behavioral variables (hand washing before feeding the child, cleaning the child after defecation, caregiver relation to the child, latrine usage, bottle feeding, nutritional status, consuming of raw animal product, eg milk) were taken as determinant factors.

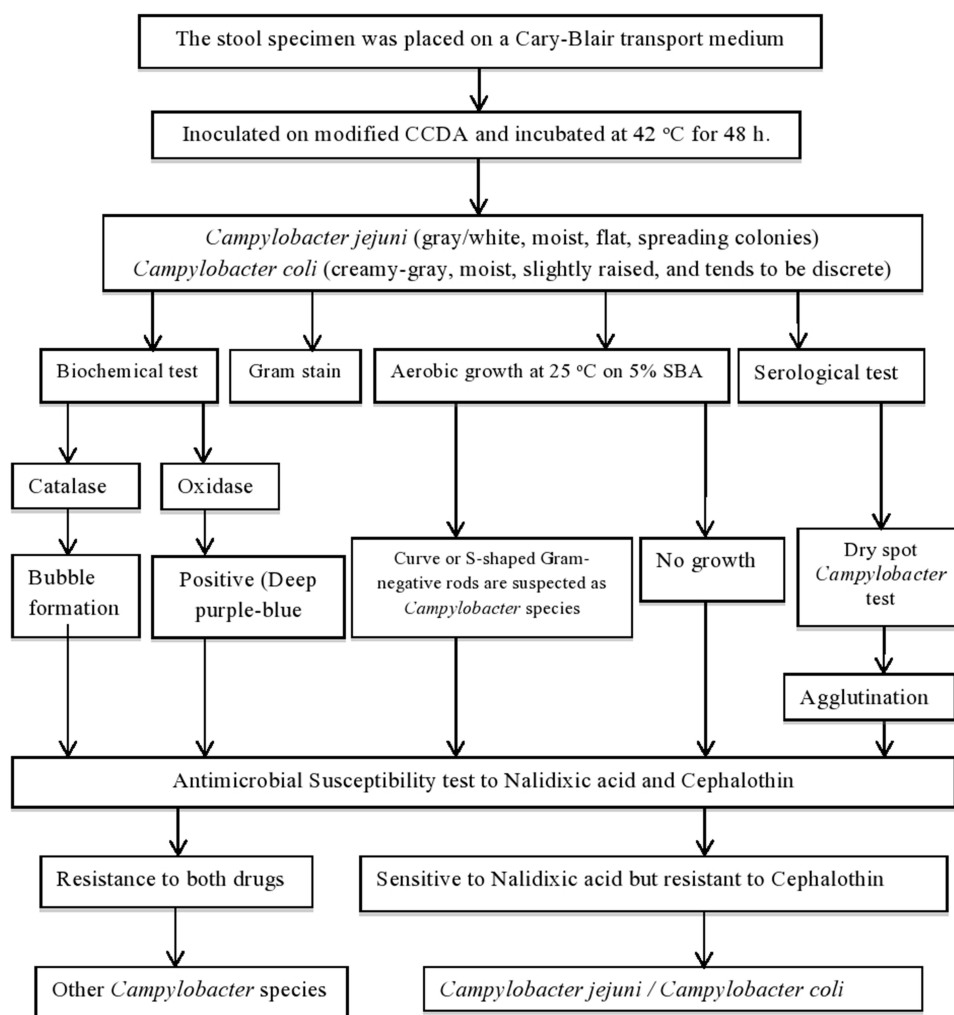
## Data Collection Procedure

After obtaining written consent from the parents/caregivers, socio-demographic, environmental, behavioral, and clinical data were collected using a pre-structured questionnaire with the help of trained clinicians on how to collect the data for 1 day. About 5 mL of fresh diarrheal stool specimen free of urine and soil contamination was collected using leak-proof stool containers (Figure 1). The specimen was transported with Cary Blair transport medium to Mekelle University, Ayder Comprehensive Specialized Hospital, Medical Microbiology laboratory in an ice-cold box within 4 h of collection and processed immediately.<sup>30</sup>

The specimen was inoculated on a Modified Charcoal Cefoperazone Deoxycholate Agar (MCCDA) (OXOID, CM0739) with supplements and kept in a 2.5 L anaerobic jar. Campy-Gen gas generating kit (5% O<sub>2</sub> and 10% CO<sub>2</sub>) (Oxoid CN0025A) was inserted to maintain the micro-aerophilic condition. The jars were incubated at a temperature of 42°C for 48 h.<sup>30</sup> The presence or absence of bacterial growth on the agar media was observed. *Campylobacter* species were identified using colony appearance on the culture medium (moist, creamy-grey, and flat-spreading), Gram stain, serological test (dry spot *Campylobacter* test (OXOID, Basing stoke Hampshire, England), biochemical test (oxidase positive, catalase positive), and growth at 25°C on sheep blood agar.<sup>19</sup> Cephalothin (30 µg) and nalidixic acid (30 µg) both obtained from OXOID were used for the susceptibility test. *Campylobacter* species sensitive to nalidixic acid but resistant to cephalothin were considered *Campylobacter jejuni* or *Campylobacter coli*, while strains that are resistant to both drugs were considered other *Campylobacter* species).<sup>7,30,31</sup>

## Antimicrobial Susceptibility Testing

It was performed using the disk diffusion method. In brief, 3–5 morphologically identical bacterial colonies were picked from the culture and suspended in 5 mL of 0.85% normal saline. The turbidity of the broth culture was adjusted to 0.5 McFarland standards and measured by a McFarland densitometer (DEN-1B).



**Figure 1** Schematic illustration of the experimental work flow.

A sterile cotton swab was dipped into bacterial suspension. An excess amount of the suspension was removed and streaked on the entire surface of Muller Hinton Agar supplemented with 5% sheep blood agar (SBA). The inoculated plates were left at room temperature for 3–5 min to dry.<sup>32</sup> According to CLSI, a set of antimicrobial discs were then delivered onto the inoculated surface of the Muller-Hinton plate with ciprofloxacin (5 µg), erythromycin (30 µg), and tetracycline (30 µg). Then the plate was incubated at micro-aerophilic atmospheric conditions, at 42°C for 24 h.<sup>33</sup> After 24 h incubation, a clear zone of inhibition was measured (diameter in mm) using a straight-line ruler. The zone of inhibition was read and interpreted using an interpreting chart and determined as susceptible, intermediate, and resistant.

## Quality Control

To ensure the reliability of the information, the questionnaire was initially prepared in English and then translated into a local language (Tigrinya). Each questionnaire was checked for its completeness and consistency. All specimens were properly labeled parallel to the questionnaire. During sample collection, handling, transportation, processing, and interpretation, standard laboratory guidelines were followed. Expiry date, damage and storage problem of media, and antimicrobial disc were checked. The sterility of the prepared media was checked by incubating, 5% of the media for 24 h. A known isolate of *Campylobacter jejuni* was used for MCCDA media and *E. coli* ATCC 25922 reference strains for broth culture media and discs<sup>31</sup>

## Data Management and Statistical Analysis

Data were analyzed using SPSS version 25.0. Descriptive analyses such as frequencies and mean were computed. Initially, the association between each exposure and the presence of infection was assessed using the chi-square test. To determine independent risk factors, bivariate logistic regression analysis (COR) was employed to measure the strength of the association without reducing the confounding effect, and  $P \leq 0.3$  was made eligible in the multivariate logistic regression (AOR) to reduce the confounding effect.  $P \leq 0.05$  was used to declare it statistically significant.

## Ethical Considerations

The study was approved by the institutional review committee of Mekelle University, College of Health Sciences (Ref. #: MU-CHS-1482/2020). All the methods were performed based on relevant national, international, and scientific guidelines and regulations. Besides, our study was carried out by the code of ethics of the World Medical Association (Declaration of Helsinki) for experiments in humans. Before data collection, the objective of the study was explained to each parent/caregiver of the study participants and informed consent and assent were collected. All information, samples, and experimental results obtained from the parents were kept confidential thoroughly and used for the specified objectives of the study only. Finally, the specimens were discarded following infection prevention guidelines.

## Operational Definitions

Mal nourished: considers children who have deficiency or imbalance in their intake of nutrients, leading to negative health outcome manifested as under nutrition including stunting, wasting, or being underweight or over nutrition example obesity with regard to their age. All these was measured through anthropometric measurements of weight for height (wasting), low height for (stunting) and low weight for age (underweight).

Well nourished: incorporates children with appropriate balance of essential nutrients, optimal growth, and development and overall health. Anthropometric measurements were also used to evaluate it.

## Results

### Socio-Demographic Characteristics

In the present study, a total of 214 (125 male and 89 female) under-five children with diarrhea were recruited (Table 1). About 39 (18.2%), 52 (24.2%), 60 (28%), and 62 (28.9%) study participants were obtained from Semen, Kasich Asfaw,

**Table 1** Baseline Characteristics of the Under-Five Children with Diarrhea

Variable	Category	Frequency	Percent
Age (Months)	<12	20	9.3
	12–23	85	39.7
	24–35	49	22.9
	36–47	32	15.0
	48–59	28	13.1
Sex	Male	125	58.4
	Female	89	41.6
Residence	Rural	50	23.3
	Urban	164	76.6
Caregiver relation to child	Mother	28	13.1
	Father and Mother	186	86.9
Educational status of the caregiver	Illiterate	20	9.3
	Primary level	56	26.2
	Secondary level	78	36.4
	College and above	60	28.0
Occupational status	Labor day	69	32.2
	Farmer	43	20.1
	Merchant	61	28.5
	Governmental employed	41	19.2

Mekelle health centers, and Mekelle General Hospital, respectively. The median age of the study participants was obtained to be 30 months. Whereas the mean was 31.3 ( $\pm 13.9$ ) with 95% CI (29.3–32.9) and ranges of 1 to 59 months. The majority of participants (85 (39.7%)) were belonged to the 12–23-month group.

## Prevalence of *Campylobacter* Species

In the present study, the overall prevalence of *Campylobacter* species was 14 (6.5%) with 95% CI (3.3–10.3). Of the 14 isolates, 12 (85.7%) were *Campylobacter jejuni* / *Campylobacter coli* and 2 (14.3%) were other *Campylobacter* species. The prevalence of *Campylobacter* species between males and females was 9 (7.2%) and 5 (5.6%), respectively, which was statistically insignificant ( $p=0.64$ ). The prevalence of *Campylobacter* species among the age group of less than 12 months, rural residents, children caring by mother only, caregivers who had secondary educational level, and caregivers who were governmentally employed were detected at (2/20, 10.0%), (8/50, 16%), (2/28, 7.1%), (7/78, 9%), and (3/41, 7.3%), respectively (Table 2).

## Possible Risk Factors Associated with *Campylobacter* Species

From the risk factors of campylobacteriosis, children who used bottle feeding and had a history of animal contact (cat, dog, hen, and pigeon) had a chance of getting high risk of Campylobacteriosis and also was statistically significant association (AOR=5.13, CI=1.21–21.6,  $p=0.026$  and AOR=4.93, CI=1.33–18.17,  $P=0.016$ ), respectively (Table 3).

## Antimicrobial Susceptibility Tests

Based on CLSI 2015, three antimicrobial agents were tested using the disc diffusion method. Among the *Campylobacter* isolated strains, a higher resistance was observed for ciprofloxacin 5(35.7%). Lower resistance was shown to tetracycline 3(21.4%) and no resistance for erythromycin (Table 4).

**Table 2** Bivariate and Multivariable Analysis of the Socio-Demographic Characteristics and Prevalence of Culture-Confirmed *Campylobacter* Species Among Under-Five Children with Diarrhea

Variable	Category	Total	Campylobacter Species		COR (95%)	AOR (95%)
			Positive (%)	Negative (%)		
Age (Months)	<12	20	2 (10)	18 (90.0)	0.40 (0.024–6.79)	2.18 (0.57–8.23)*
	12–23	85	7 (8.2)	78 (91.7)	0.30 (0.03–3.01)	
	24–35	49	1 (2.0)	48 (97.9)	0.49 (0.04–4.89)	
	36–47	32	2 (6.2)	30 (93.7)	0.36 (0.03–3.66)	
	48–59	28	2 (7.1)	27 (96.4)	1	
Sex	Male	125	9 (7.2)	116 (92.8)	1.30 (0.42–4.03)	
	Female	89	5 (5.6)	84 (94.4)	1	
Residence	Rural	50	8 (16.0)	42 (84.0)	5.0 (1.65–15.24)	
	Urban	164	6 (3.7)	158 (96.3)	1	
Caregiver relation to child	Mother	28	2 (7.1)	26 (92.9)	1.11 (0.23–5.26)	
	Father and Mother	186	12 (6.5)	174 (93.5)	1	
Educational status of the caregiver	Illiterate	20	1 (5.0)	19 (95.0)	0.65 (0.05–7.63)	
	Primary level	56	4 (7.1)	52 (92.9)	0.44 (0.07–2.54)	
	Secondary level	78	7 (9.0)	71 (91.0)	0.35 (0.07–1.74)	
	College and above	60	2 (3.3)	58 (96.7)	1	
Occupational status	Labor day	69	4 (5.80)	65 (94.20)	1.28 (0.27–6.04)	
	Farmer	43	3 (7.0)	40 (93.00)	1.05 (0.20–5.54)	
	Merchant	61	4 (6.6)	57 (93.4)	1.12 (0.23–5.310)	
	Governmental employed	41	3 (7.3)	38 (92.70)	1	

**Note:** \*Statistically Significant Association.

**Abbreviations:** N, Number; COR, Crud odds Ratio; AOR, Adjusted Odds Ratio.



**Table 3** Bivariate and Multivariate Analysis of Potential Predictors of *Campylobacter* Species Among Under-Five Children with Diarrhea

Variable	Category	Total	Campylobacter Species		COR (95%)	AOR (95%)
			Positive (N (%))	Negative (N (%))		
Nutritional Status of the child	Mal-nourished	14	2 (14.3)	12 (85.7)	2.61 (0.52–13.0)	2.07 (0.29–14.5)
	Well-nourished	200	12 (6.0)	188 (94.0)	1	
Bottle feeding	Yes	97	11 (11.3)	86 (88.70)	4.86 (1.31–17.95)	5.13 (1.21–21.6)**
	No	117	3 (2.60)	114 (97.40)	1	
Water source	Well	33	2 (6.1)	31 (93.9)	1.10 (0.23–5.24)	
	Spring	16	1 (6.2)	15 (93.8)	1.07 (0.12–8.87)	
	Pipe	165	11 (6.7)	154 (93.3)	1	
Animal contact status	Yes	77	10 (13.0)	67 (87.0)	4.96 (1.50–16.41)	4.93 (1.33–18.17)**
	No	137	4 (2.9)	133 (97.1)	1	
Poultry farm	Yes	37	6 (16.2)	31 (83.8)	4.08 (1.32–12.60)	2.02 (0.55–7.47)*
	No	177	8 (4.5)	169 (95.5)	1	
Child Contact with a diarrheal person	Yes	24	3 (12.5)	21 (87.5)	2.32 (0.60–9.00)	0.52 (0.08–3.16)
	No	190	11 (5.8)	179 (94.2)	1	
Defecation practice	Open defecation	13	1 (7.7)	12 (92.3)	1.20 (0.14–10.0)	
	Toilet	201	13 (6.5)	188 (93.5)	1	
Clean the child after defecation	Not at all	22	1 (4.5)	21 (95.5)	1.55 (0.19–12.57)	
	Yes sometimes	18	1 (5.6)	17 (94.4)	1.25 (0.15–10.28)	
	Yes, always	174	12 (6.9)	162 (93.1)	1	
The habit of hand wash	Not at all	62	4 (6.5)	58 (93.5)	1.10 (0.30–3.93)	
	Yes, sometimes	53	3 (5.7)	50 (94.3)	1.26 (0.314–5.12)	
	Yes, always	99	7 (7.1)	92 (92.9)	1	
Cleaning agents for utensils	Use water only	60	4 (6.7)	56 (93.3)	1.21 (0.208–7.11)	
	Watery soap	129	8 (6.2)	121 (93.8)	1.31 (0.26–6.59)	
	Hypochlorite	25	4 (6.7)	21 (84)	1	
Consuming raw milk	Yes	8	1 (12.5)	7 (87.5)	2.12 (0.24–18.56)	
	No	206	13 (6.3)	193 (93.7)	1	

**Notes:** \*\*Significant at p.value<0.001, \*Significant at p.value<0.05.

**Abbreviations:** N, Number; COR, Crude odds Ratio; AOR, Adjusted Odds Ratio.

**Table 4** Antimicrobial Susceptibility Pattern of *Campylobacter* Species

Drug	Interpretive Category	Campylobacter Species		
		<i>C. jejuni /coli</i>	Other Species	Total N (%)
Erythromycin	S	12 (85.7%)	2 (14.3%)	14 (100%)
	R	0 (0%)	0 (0%)	0 (0%)
Ciprofloxacin	S	7 (77.8%)	2 (22.2%)	9 (64.3%)
	R	5 (32.2%)	0 (0%)	5 (35.7%)
Tetracycline	S	9 (81.8%)	2 (18.2%)	11 (78.6%)
	R	3 (100.0%)	0 (0%)	3 (21.4%)

**Note:** The Interpretive category and breakpoint are performed according to CLSI-2015 (M45, 3rd edn).

**Abbreviations:** S, Sensitive; R, Resistance.

## Discussion

In this study, we found that 6.5% of under-five children with diarrhea were confirmed to have an infection with *Campylobacter* species. Participants having history of contact with domestic animals and bottle feeding were more likely to be infected with Campylobacteriosis.

The present prevalence of *Campylobacter* species infection rate in under-five diarrheal children was 6.5% with 95% CI (3.3–10.3); comparable to the prevalence in developing countries, which ranges from “5–20%.”<sup>11</sup> Compared with other previous studies, the prevalence of the present study is lower than other studies conducted in Ethiopia like Dembia (12.7%)<sup>11</sup> Hawassa (12.7%)<sup>32</sup> Gondar (15.4%)<sup>31</sup> and Jimma (16.7%).<sup>18</sup> This prevalence was also lower than in previous studies done in African and other countries Egypt (42%),<sup>19</sup> Liberia 44.9%,<sup>34</sup> Uganda (9.3%),<sup>35</sup> Tanzania (9.7%),<sup>36</sup> Cameroon (9.6%),<sup>27</sup> Bangladesh (23.71%),<sup>37</sup> Thailand (13%),<sup>23</sup> Brazil (9.9%),<sup>38</sup> Poland (9.6%),<sup>10</sup> while our study showed similar prevalence with studies reported in Brazil (6.8%)<sup>38</sup> and Iran (8%).<sup>21</sup> However, a lower prevalence was reported in Sudan (2%),<sup>26</sup> Zambia (93.5%),<sup>39</sup> Nigeria (90.5%),<sup>40</sup> and Burkina Faso (92.3%).<sup>18</sup> These variations could be owing to demographic, geographic location, study period, study design, isolation method, and sample size difference between these studies.<sup>31</sup>

Bottle feeding and animal contact (cat, dog, and hen) showed a statistically significant association with the recovery rate of *Campylobacter* species. The risk of acquiring *Campylobacter* through bottle feeding and animal contact was five and four-fold higher than those who did not, respectively. The increment of risk in bottle feeding may be due to the use of unpasteurized milk, low-level sterilization of the bottles, and storage of cooked food for later use and the increasing risk in animal contact may be due to direct contact with domestic animals, which are the main modes of transmission to humans.<sup>41</sup>

According to WHO 2017 report, *Campylobacter* species are recorded as one of the six great priority antibiotic-resistant pathogens. Effective antibiotic therapy is critical for people with severe or prolonged *Campylobacter* infection, for the elderly, young, and immune-compromised. According to the CDC, the recommended antimicrobial treatment for *Campylobacter* species is Macrolides (erythromycin), Fluor quinolones (ciprofloxacin), and tetracycline.<sup>42,43</sup> In this study, all of the isolated *Campylobacter* species (100%) were sensitive to erythromycin, which is similar to studies done in Uganda<sup>35</sup> and Poland, however, differing from the studies elsewhere with various resistance patterns. Briefly, in Iran (2.9%),<sup>21</sup> Hawassa (55%),<sup>32</sup> Jimma, (18.4%),<sup>30</sup> Gondar (27.7%),<sup>31</sup> and Bahirdar (17.6%),<sup>44</sup> respectively. In the current study, the resistance of the *Campylobacter* species against ciprofloxacin was 35.7%, which is lower resistance than studies conducted in Iran, 61.7%<sup>45</sup> in Poland (65.2%),<sup>46</sup> Gondar (84%),<sup>31</sup> but higher resistance than Uganda (5%),<sup>47</sup> Hawassa (18.8%),<sup>18</sup> Jimma (15.8%),<sup>48</sup> and Bahirdar (12.5%).<sup>49</sup> Moreover, the resistance to tetracycline was 21.4%, which is relatively comparable with a study conducted in Iran (20.5%)<sup>45</sup> and Bahirdar (22.2%),<sup>49</sup> but lower resistance than a study reported from Poland (39.1%),<sup>46</sup> Jimma (39.5%),<sup>48</sup> Gondar (56.8%),<sup>31</sup> and Hawassa (31.1%).<sup>18</sup> However, higher resistance than study conducted in Uganda (5%).<sup>47</sup>

The variation might be due to uncontrolled use of antibiotics such as self-medication and access without prescription, interpretive criteria of antimicrobial susceptibility tests for *Campylobacter*, ineffective prescribed antimicrobials, feeding of transfer contaminated food, water, and milk are the main causes for the development of antimicrobial resistance.<sup>35,50–52</sup>

## Limitation of the Study

The primary limitations of our study were its cross-sectional study design and small calculated sample size. We have missed incorporating breastfeeding and breastfeeding duration-related characteristics; this is also another limitation from our study. The additional limitation of this study was the inability to differentiate *C. jejuni* from *C. coli* due to the unavailability of the Hippurate hydrolysis test and advanced molecular gene sequencers.

## Conclusion

The prevalence of *Campylobacter* species among the under-five children with diarrhea at the selected health facilities is slightly high. These *Campylobacter* isolates showed higher resistance. *Campylobacter* species were significantly associated with the use of bottle feeding and being with a history of animal contact. To reduce/eliminate the incidence of *Campylobacter* species; uninterrupted assessment and monitoring of the prevalence and antimicrobial susceptibility of *Campylobacter* species in health-care facilities and community is needed. Besides, proper sterilization of bottle feeding or drinking properly pasteurized milk is recommended to prevent *Campylobacter* infections. In addition to culture, to prescribe recommended drugs according to the accurate results a molecular study is mandatory to identify genes responsible for drug resistance and virulence process mainly aimed at reduction of drug-resistant strain transmission



through selective treatment by emphasizing sensitive drugs like that of erythromycin in the treatment guidelines. It is also high time to setting different intervention modalities such as health education and health promotion intervention for mothers/caretakers who are poor and less educated.

## Abbreviations

AGE, Acute Gastroenteritis; ATCC, American Type Culture Collection; CDC, Centers for Disease Control and Prevention; EU/EEA, European Union/European Economic Area; CLSI, Clinical and Laboratory Standards Institute; GBS, Guillain Barre Syndrome; IBD, Inflammatory Bowel Disease; MCCDA, Modified Charcoal Cefoperazone Deoxycholate Agar; MHA, Muller Hinton Agar; NCCLS, National Committee for Clinical Laboratory Standards; ReA; SBA, Reactive Arthritis; Sheep Blood Agar; WHO, World Health Organization.

## Data Sharing Statement

The datasets generated and/or analyzed during the current study are not publicly available because of the sensitive nature of the data but are accessible from the corresponding author at a reasonable request.

## Ethical Approval and Consent Given to the Patients

The Ethical Review Committee of the College of Health Sciences of Mekelle University approved the study. All patients were included after providing written informed consent and/or assent as appropriate. For illiterate patients, data collectors read the informed consent for each respondent and confirmed the willingness of the patients by signing the informed consent sheet. Moreover, the confidentiality of the patient's information was safeguarded.

## Acknowledgments

The authors would like to thank Tigray Health Research Institute and Mekelle University for their financial support. Moreover, the authors would like to acknowledge all staff of Dr. Tewelde Health Science College, Ayder Specialized Comprehensive Hospital, and Mekelle General Hospital for their genuine cooperation.

## Funding

This study was funded by Mekelle University. Dr. Tewelde College of Health Sciences also provided the reagents required to perform the respective laboratory investigations. The funders had no role in study design, data collection, and analysis, decision to publish, or preparation of the manuscript.

## Disclosure

The authors declare that there is no competing interest in this work.

## References

1. Debalkie G, Id D, Id YY, Alemine W, Id YA. Diarrhea and associated factors among under five children in sub-Saharan Africa: evidence from demographic and health surveys of 34 sub-Saharan countries. *PLoS One*. 2021;24(9):1–13. doi:10.1371/journal.pone.0257522
2. Merid MW, Alem AZ, Chilot D, Belay DG. Impact of access to improved water and sanitation on diarrhea reduction among rural under - five children in low and middle - income countries: a propensity score matched analysis. *Trop Med Health*. 2023;51(1):1–10. doi:10.1186/s41182-023-00525-9
3. Girmay AM, Gari SR, Alemu BM, Martin R, Gebreyohannes Gebremariam A. Diarrheal disease and associated behavioural factors among food handlers in Addis Ababa, Ethiopia. *AIMs Public Heal*. 2020;7(1):100–113. doi:10.3934/publichealth.2020010
4. Wolde D, Tilahun GA, Kotiso KS, Medhin G, Egale T. The burden of diarrheal diseases and its associated factors among under-five children in Welkite Town: a community based cross-sectional study. *Int J Public Health*. 2022;67:1–9. doi:10.3389/ijph.2022.1604960
5. Solomon ET, Gari SR, Alemu BM, Solomon ET. Prevalence and risk factors of diarrhea among children less than five years of age in the rural suburbs of Dire Dawa, Eastern Ethiopia; Robust Poisson Regression Analysis. *Afr Health Sci*. 2022;22(4):653–663. doi:10.4314/ahs.v22i4.71
6. Gessesse DN, Tarekegn AA. Prevalence and associated factors of diarrhea among under-five children in the Jawi district, Awi Zone Ethiopia, 2019. Community based comparative cross-sectional study. *Front Pediatr*. 2022;10:1–9. doi:10.3389/fped.2022.890304
7. Mazaheri M, Rezaei MH, Aalinezhad M, Sharif MR, Akhavan T. Clinical and Laboratory Characteristics of Pediatric *Campylobacter* spp. Acute Gastroenteritis. *Arch Pediatr Infect Dis*. 2016;4(4):1–6. doi:10.5812/pedinfest.35730.Research
8. Cai H, Shao Y, Yu W. Prevalence and associated factors of acute gastroenteritis in children and adolescents aged from 6 to 17 years old: a cross-sectional study based on the National Health and Nutrition Examination Survey database 1999 – 2018. *BMJ Open*. 2023;13(2):1–8. doi:10.1136/bmjopen-2022-068319

9. Pakhtunkhwa K, Khan MA. Epidemiological studies on gastroenteritis in children in the Bannu district, Khyber Pakhtunkhwa, Pakistan. *J Public Heal from Theory to Pract.* **2023**;31:739–746.
10. Liu F, Lee SA, Xue J, Riordan SM, Zhang L. Global epidemiology of campylobacteriosis and the impact of COVID-19. *Front Cell Infect Microbiol.* **2022**;12:1–37. doi:10.3389/fcimb.2022.979055
11. Epps SVR, Harvey RB, Hume ME, Phillips TD, Anderson RC, Nisbet DJ. Foodborne Campylobacter: infections, Metabolism, Pathogenesis and Reservoirs. *Int J Environ Res Public Health.* **2013**;10(12):6292–6304. doi:10.3390/ijerph10126292
12. Samie A, Moropeng RC, Tanih NF, et al. Epidemiology of Campylobacter infections among children of 0 – 24 months of age in South Africa. *Arch Public Health.* **2022**;80(1):107. doi:10.1186/s13690-022-00850-1
13. Nigusu Y, Abdissa A, Tesfaw G, Kim H-Y. Campylobacter gastroenteritis among under-five children in Southwest Ethiopia. *Gut Pathog.* **2022**;14(1):1–11. doi:10.1186/s13099-022-00517-w
14. Hankel J, Gibson T, Skov J, et al. Monitoring of Campylobacter jejuni in a chicken infection model by measuring specific volatile organic compounds and by qPCR. *Sci Rep.* **2022**;12(1):1–11. doi:10.1038/s41598-022-15863-7
15. Serwecińska L. Antimicrobials and Antibiotic-Resistant Bacteria. *Water.* **2020**;12(12):3313. doi:10.3390/w12123313
16. Gao F, Tu L, Chen M, et al. Erythromycin resistance of clinical Campylobacter jejuni and Campylobacter coli in Shanghai, China. *Front Microbiol.* **2023**;14(May). doi:10.3389/fmicb.2023.1145581
17. López-Vélez R, Lebens M, Bundy L, Barriga J, Steffen R. Bacterial travellers' diarrhoea: a narrative review of literature published over the past 10 years. *Travel Med Infect Dis.* **2022**;47:102293. doi:10.1016/j.tmaid.2022.102293
18. Behailu Y, Hussien S, Alemayehu T, Mengistu M, Fenta DA, Algammal AM. Susceptibility patterns of Campylobacter infection among under-five children with diarrhea at Governmental Hospitals in Hawassa city, Sidama, Ethiopia. A cross-. *PLoS One.* **2022**;17(5):1–19. doi:10.1371/journal.pone.0266976
19. Sainato R, Elgendy A, Kuroiwa J, Guerry P, Riddle MS, Porter CK. Epidemiology of campylobacter infections among children in Egypt. *Am J Trop Med Hyg.* **2018**;98(2):581–585. doi:10.4269/ajtmh.17-0469
20. Mebrahtom S, Worku A, Gage DJ, Jaafar MH, Abdullah H. The risk of water, sanitation and hygiene on diarrhea-related infant mortality in eastern Ethiopia: a population-based nested case- control. *BMC Public Health.* **2022**;22(1):1–14. doi:10.1186/s12889-022-12735-7
21. Ansarifard E, Riahi SM, Tasara T, Sadighara P, Zeinali T. Campylobacter prevalence from food, animals, human and environmental samples in Iran: a systematic review and meta - analysis. *BMC Microbiol.* **2023**;23(1):1–20. doi:10.1186/s12866-023-02879-w
22. Mbindyo SN, Kitaa JMA, Abuom TO, et al. Molecular prevalence and risk factors of campylobacter infection in puppies in the Nairobi Metropolitan Region, Kenya. *Vet Med Int.* **2023**;2023:1–7. doi:10.1155/2023/8813405
23. Charoenwat B, Suwannaying K, Paibool W, Laoaroon N, Sutra S, Thepsuthammarat K. Burden and pattern of acute diarrhea in Thai children under 5 years of age: a 5 - year descriptive analysis based on Thailand National Health Coverage (NHC) data. *BMC Public Health.* **2022**;22(1):1–10. doi:10.1186/s12889-022-13598-8
24. Terefe Y, Deblais L, Ghanem M, Helmy YA. Co-occurrence of Campylobacter species in children from Eastern Ethiopia, and Their Association With Environmental Enteric Dysfunction, Diarrhea, and Host Microbiome. *Front Public Health.* **2020**;8:1–16. doi:10.3389/fpubh.2020.00099
25. Kiros M, Gebru SB, Tewelde B. Knowledge, attitude, practice and associated factors towards COVID-19 and its prevention measures among residents of Mekelle City, Tigray Region, Northern Ethiopia: a community-based cross sectional study. *J Public Health.* **2023**;12:1–16. doi:10.1007/s10389-023-01826-3
26. Saeed A, Abd H, Sandstrom G. Microbial aetiology of acute diarrhoea in children under five years of age in Khartoum, Sudan. *J Microbiol.* **2015**;64:432–437. doi:10.1099/jmm.0.000043
27. Tambe AB, Nzefa LD, Nicoline NA. Childhood diarrhea determinants in Sub-Saharan Africa: a cross sectional study of Tiko-Cameroon. *Challenges.* **2015**;6(2):229–243. doi:10.3390/challe6020229
28. Schreyer ME, Olivero CR, Rossler E, et al. Current research in food science identified in a slaughterhouse in Argentina. *Curr Res Food Sci.* **2022**;5:590–597. doi:10.1016/j.crf.2022.03.005
29. Tahir M, Imam E, Hussain T. Evaluation of land use/land cover changes in Mekelle City, Ethiopia using Remote Sensing and GIS. *Comput Ecol Softw.* **2013**;3(1):9–16.
30. Debelo M, Mohammed N, Tiruneh A, Tolosa T, Cartelle Gestal M. Isolation, identification and antibiotic resistance profile of thermophilic Campylobacter species from Bovine, Knives and personnel at Jimma Town Abattoir, Ethiopia. *PLoS One.* **2022**;17(10):1–14. doi:10.1371/journal.pone.0276625
31. Lengerh A, Moges F, Unakal C, Anagaw B. Prevalence, associated risk factors and antimicrobial susceptibility pattern of Campylobacter species among under five diarrheic children at Gondar University Hospital, Northwest Ethiopia. *BMC Pediatr.* **2013**;13(1):1–9. doi:10.1186/1471-2431-13-82
32. Getamesay M, Getenet B, Ahmed Z. Prevalence of Shigella, Salmonella and Campylobacter Species and their susceptibility patterns among under five children with diarrhea in Hawassa Town, South Ethiopia. *Ethiop J Health Sci.* **2014**;2(7):101–108. doi:10.4314/ejhs.v24i2.1
33. Gajic I, Kabic J, Kekic D, et al. Antimicrobial susceptibility testing: a comprehensive review of currently used methods. *Antibiotics.* **2022**;11(4):1–26. doi:10.3390/antibiotics11040427
34. Paintsil EK, Ofori LA, Adobea S, et al. Prevalence and antibiotic resistance in Campylobacter spp. isolated from humans and food-producing animals in West Africa: a systematic review and meta-analysis. *Pathogens.* **2022**;11(140):1–17. doi:10.3390/pathogens11020140
35. Nigusu Y, Abdissa A, Tesfaw G. Campylobacter gastroenteritis among under-five children in Southwest Ethiopia. *Infect Drug Resist.* **2022**;15:2969–2979. doi:10.2147/IDR.S354843
36. Hugh EA, Kumburu HH, Amani NB, et al. Enteric pathogens detected in children under five years old admitted with Diarrhea in Moshi, Kilimanjaro, Tanzania. *Pathogens.* **2023**;12(618):1–11. doi:10.3390/pathogens12040618
37. Pervin MK, Jhora ST, Paul S, Naher A, Sarkar D. Causative agents for diarrhoea in under 5 children in a tertiary care hospital. *Bangladesh Med J Khulna.* **2018**;51(1–2):25–28. doi:10.3329/bmj.v51i1-2.40470
38. Aldo AML, Oliveira DB, Quetz JS, et al. Etiology and severity of diarrheal diseases in infants at the semiarid region of Brazil: a case- control study. *PLoS Negl Trop Dis.* **2019**;13(2):1–14.
39. Chiyangi H, Muma JB, Malama S, et al. Identification and antimicrobial resistance patterns of bacterial enteropathogens from children aged 0 – 59 months at the University Teaching Hospital, Lusaka, Zambia: a prospective cross sectional study. *BMC Infect Dis.* **2017**;17(1):1–9. doi:10.1186/s12879-017-2232-0

40. Jiwok JC, Adebawale AS, Wilson I, Kancherla V, Umeokonkwo CD. Patterns of diarrhoeal disease among under-five children in Plateau State. *BMC Public Health*. 2021;21(1):1–9. doi:10.1186/s12889-021-12110-y
41. Hansson I, Habib I, Lowman R, Engvall EO, Engvall EO. Knowledge gaps in control of *Campylobacter* for prevention of campylobacteriosis. *Transbound Emerg Dis*. 2018;65(1):30–48. doi:10.1111/tbed.12870
42. Sithole V, Amoako DG, Luther A, et al. Characterization of *Campylobacter* spp. in Intensive Pig Production in South Africa. *Pathogens*. 2021;10(4):1–16. doi:10.3390/pathogens10040439
43. Whitehouse CA, Zhao S, Tate H. Antimicrobial resistance in campylobacter species: mechanisms and genomic epidemiology. In: *Advances in Applied Microbiology*. 1st ed. Vol. 100. Elsevier Inc.; 2018:1–47. doi:10.1016/bs.aambs.2018.01.001
44. Dar B. Prevalence and antimicrobial resistance of campylobacter isolates from humans. *Foodborne Pathog Dis*. 2010;7(6):7–10.
45. Sharifi S, Bakhshi B, Najari-peerayeh S. Significant contribution of the CmeABC Efflux pump in high-level resistance to ciprofloxacin and tetracycline in *Campylobacter jejuni* and *Campylobacter coli* clinical isolates. *Ann Clin Microbiol Antimicrob*. 2021;20(1):1–9. doi:10.1186/s12941-021-00439-6
46. Szczepanska B, Andrzejewska M, Spica D, Klawe JJ. Prevalence and antimicrobial resistance of *Campylobacter jejuni* and *Campylobacter coli* isolated from children and environmental sources in urban and suburban areas. *BMC Microbiol*. 2017;17(1):1–9. doi:10.1186/s12866-017-0991-9
47. Se M, Joloba M, Kakooza A, Mulindwa K. *Campylobacter* spp among Children with acute diarrhea attending Mulago hospital in Kampala-Uganda. *Afr Health Sci*. 2009;9(3):201–205.
48. Tafa B, Sewunet T, Tasew H, Asrat D. Isolation and Antimicrobial Susceptibility Patterns of *Campylobacter* Species among Diarrheic Children at Jimma, Ethiopia. *Int J Bacteriol*. 2014;2014:1–7. doi:10.1155/2014/560617
49. Ewnetu D, Mihret A. Prevalence and Antimicrobial Resistance of *Campylobacter* Isolates from Humans. *Foodborne Pathog Dis*. 2010;7(6):7–10. doi:10.1089/fpd.2009.0433
50. Zachariah OH, Lizzy MA, Rose K, Angela MM. Multiple drug resistance of *Campylobacter jejuni* and *Shigella* isolated from diarrhoeic children at Kapsabet County referral hospital, Kenya. *BMC Infect Dis*. 2021;21(1):4–11. doi:10.1186/s12879-021-05788-3
51. Mabilika RJ, Mpolya E, Shirima G. Prevalence and predictors of self-medication with antibiotics in selected urban and rural districts of the Dodoma region, Central Tanzania: a cross-sectional study. *Antimicrob Resist Infect Control*. 2022;11(1):1–9. doi:10.1186/s13756-022-01124-9
52. Simegn W, Moges G. Antibiotics self-medication practice and associated factors among residents in Dessie City, Northeast Ethiopia: community-based cross-sectional study. *Patient Prefer Adherence*. 2022;16:2159–2170. doi:10.2147/PPA.S370925

## Infection and Drug Resistance

Dovepress

### Publish your work in this journal

Infection and Drug Resistance is an international, peer-reviewed open-access journal that focuses on the optimal treatment of infection (bacterial, fungal and viral) and the development and institution of preventive strategies to minimize the development and spread of resistance. The journal is specifically concerned with the epidemiology of antibiotic resistance and the mechanisms of resistance development and diffusion in both hospitals and the community. The manuscript management system is completely online and includes a very quick and fair peer-review system, which is all easy to use. Visit <http://www.dovepress.com/testimonials.php> to read real quotes from published authors.

Submit your manuscript here: <https://www.dovepress.com/infection-and-drug-resistance-journal>