

**WORK TO BE COMPLETED:**

1. ERECT SITE FENCE, PEDESTRIAN FACILITIES, AND SIGNAGE.
2. REMOVE LIGHT POSTS AND SIGNAGE ALONG THE SITE FRONTAGES.
3. REMOVE 4 PARKING METER POSTS ON EAST NEWTON STREET – METER HEADS HA078 – HA084 (7 SPACES). REMOVE 2 PARKING METER POSTS ON ALBANY STREET – METER HEADS HA268 – HA270 (3 SPACES).
4. REMOVE EXISTING AND INSTALL TEMPORARY TRAFFIC SIGNAL.
5. RELOCATED TRAFFIC SIGNAL CONTROL CABINET.
6. DEMOLISH ALL INTERIOR BUILDING FEATURES AND ON-SITE CURB AND SIDEWALK.
7. INSTALL SUPPORT OF EXCAVATION FOR NEW BASEMENT.
8. CONSTRUCTION THE FIRST FLOOR ADDITION.
9. CONSTRUCT THE NEW BASEMENT.
10. CONSTRUCT THE NEW MAIN ENTRANCE.

**NOTES:**

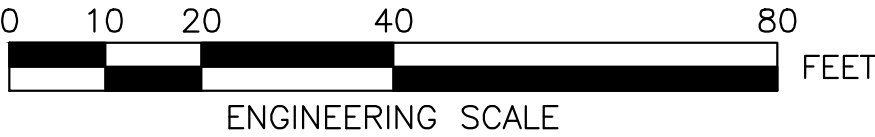
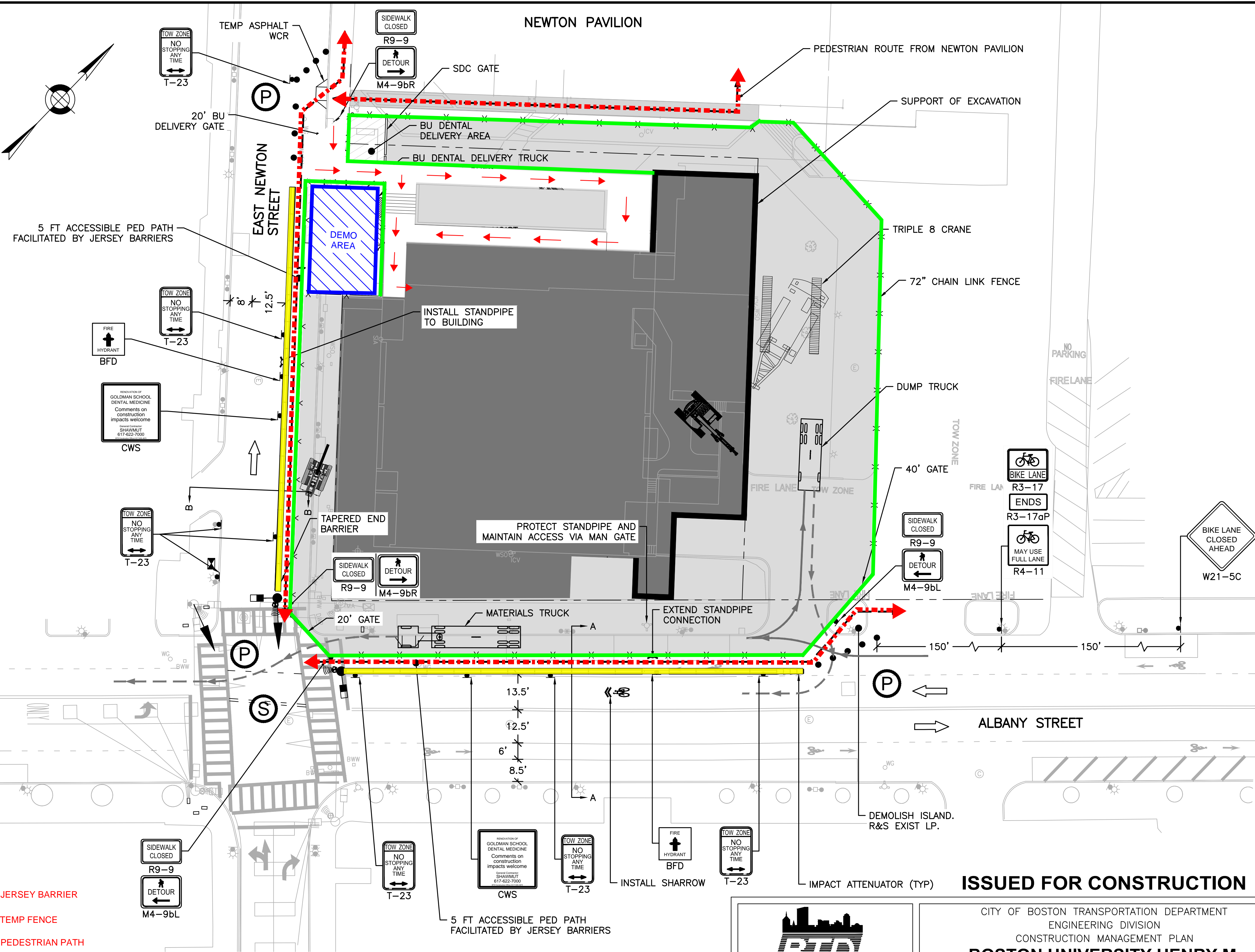
1. MAINTAIN ACCESS TO THE TEMPORARY BU DENTAL DELIVERY GATE AT ALL TIMES.
2. PEDESTRIAN ROUTE LOCATIONS IN FRONT OF CONSTRUCTION GATES SHALL BE DELINEATED WITH DRUMS DURING ACTIVE CONSTRUCTION AND REPLACED WITH MOVEABLE BARRIERS AT THE END OF EACH WORK PERIOD.
3. SEE SHEETS 11 AND 12 FOR TEMPORARY TRAFFIC SIGNAL PLAN AND SCHEDULE.
4. SEE SHEET 13 – DETAILS 1–4 FOR TRUCK TURNING MANEUVERS.
5. SEE ROADWAY CROSS SECTIONS ON SHEET 5.
6. SEE SHEET 17 FOR FINAL BUILDING RENDERINGS.

**SITE SETUP - WEEK 1**

**SATURDAY - 2/24/18**  
- Jersey Barrier Setup

**WEEK WORK - 2/26/18 thru 2/30/18**  
- Temporary Fencing and Gates  
- Re-route Pedestrian Entrance  
- East Newton Stair Demolition

- JERSEY BARRIER
- TEMP FENCE
- PEDESTRIAN PATH
- DEMO AREA



DRAWING PREPARED BY HOWARD STEIN HUDSON



DESIGNED BY B. ZIMOLKA  
DRAWN BY B. ZIMOLKA  
CHECKED BY R. BURGESS  
APPROVED BY R. BURGESS

**ISSUED FOR CONSTRUCTION**

CITY OF BOSTON TRANSPORTATION DEPARTMENT  
ENGINEERING DIVISION  
CONSTRUCTION MANAGEMENT PLAN  
**BOSTON UNIVERSITY HENRY M. GOLDMAN SCHOOL OF DENTAL MEDICINE**  
SITE PREP, BASEMENT, FIRST FLOOR RENOVATIONS AND MAIN ENTRANCE  
BOSTON

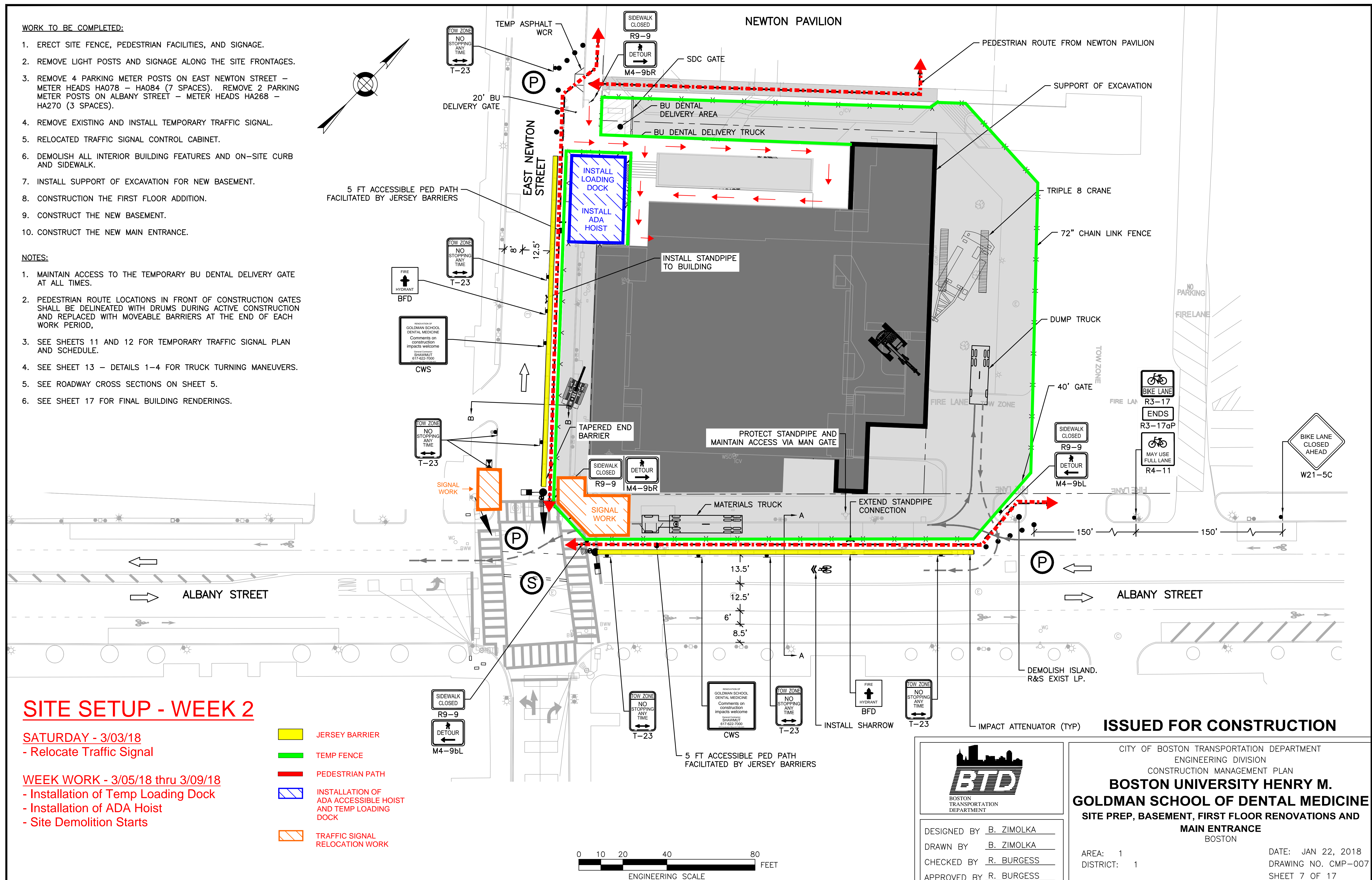
AREA: 1  
DISTRICT: 1

DATE: JAN 22, 2018  
DRAWING NO. CMP-007  
SHEET 7 OF 17



1. ERECT SITE FENCE, PEDESTRIAN FACILITIES, AND SIGNAGE.
2. REMOVE LIGHT POSTS AND SIGNAGE ALONG THE SITE FRONTAGES.
3. REMOVE 4 PARKING METER POSTS ON EAST NEWTON STREET – METER HEADS HA078 – HA084 (7 SPACES). REMOVE 2 PARKING METER POSTS ON ALBANY STREET – METER HEADS HA268 – HA270 (3 SPACES).
4. REMOVE EXISTING AND INSTALL TEMPORARY TRAFFIC SIGNAL.
5. RELOCATED TRAFFIC SIGNAL CONTROL CABINET.
6. DEMOLISH ALL INTERIOR BUILDING FEATURES AND ON-SITE CURB AND SIDEWALK.
7. INSTALL SUPPORT OF EXCAVATION FOR NEW BASEMENT.
8. CONSTRUCTION THE FIRST FLOOR ADDITION.
9. CONSTRUCT THE NEW BASEMENT.
10. CONSTRUCT THE NEW MAIN ENTRANCE.

1. MAINTAIN ACCESS TO THE TEMPORARY BU DENTAL DELIVERY GATE AT ALL TIMES.
2. PEDESTRIAN ROUTE LOCATIONS IN FRONT OF CONSTRUCTION GATES SHALL BE DELINEATED WITH DRUMS DURING ACTIVE CONSTRUCTION AND REPLACED WITH MOVEABLE BARRIERS AT THE END OF EACH WORK PERIOD,
3. SEE SHEETS 11 AND 12 FOR TEMPORARY TRAFFIC SIGNAL PLAN AND SCHEDULE.
4. SEE SHEET 13 - DETAILS 1-4 FOR TRUCK TURNING MANEUVERS.
5. SEE ROADWAY CROSS SECTIONS ON SHEET 5.
6. SEE SHEET 17 FOR FINAL BUILDING RENDERINGS.



## SITE SETUP - WEEK 2

SATURDAY - 3/03/18  
- Relocate Traffic Signal

WEEK WORK - 3/05/18 thru 3/09/18

- Installation of Temp Loading Dock
- Installation of ADA Hoist
- Site Demolition Starts

**ISSUED FOR CONSTRUCTION**

CITY OF BOSTON TRANSPORTATION DEPARTMENT  
ENGINEERING DIVISION  
CONSTRUCTION MANAGEMENT PLAN  
**BOSTON UNIVERSITY HENRY M.  
GOLDMAN SCHOOL OF DENTAL MEDICINE**  
SITE PREP, BASEMENT, FIRST FLOOR RENOVATIONS AND  
**MAIN ENTRANCE**  
BOSTON

AREA: 1  
DISTRICT: 1

DATE: JAN 22, 2018  
DRAWING NO. CMP-007  
SHEET 7 OF 17

DRAWING PREPARED BY HOWARD STEIN HUDSON



1. ERECT SITE FENCE, PEDESTRIAN FACILITIES, AND SIGNAGE.
2. REMOVE LIGHT POSTS AND SIGNAGE ALONG THE SITE FRONTAGES.
3. REMOVE 4 PARKING METER POSTS ON EAST NEWTON STREET – METER HEADS HA078 – HA084 (7 SPACES). REMOVE 2 PARKING METER POSTS ON ALBANY STREET – METER HEADS HA268 – HA270 (3 SPACES).
4. REMOVE EXISTING AND INSTALL TEMPORARY TRAFFIC SIGNAL.
5. RELOCATED TRAFFIC SIGNAL CONTROL CABINET.
6. DEMOLISH ALL INTERIOR BUILDING FEATURES AND ON-SITE CURB AND SIDEWALK.
7. INSTALL SUPPORT OF EXCAVATION FOR NEW BASEMENT.
8. CONSTRUCTION THE FIRST FLOOR ADDITION.
9. CONSTRUCT THE NEW BASEMENT.
10. CONSTRUCT THE NEW MAIN ENTRANCE.

1. MAINTAIN ACCESS TO THE TEMPORARY BU DENTAL DELIVERY GATE AT ALL TIMES.
2. PEDESTRIAN ROUTE LOCATIONS IN FRONT OF CONSTRUCTION GATES SHALL BE DELINEATED WITH DRUMS DURING ACTIVE CONSTRUCTION AND REPLACED WITH MOVEABLE BARRIERS AT THE END OF EACH WORK PERIOD,
3. SEE SHEETS 11 AND 12 FOR TEMPORARY TRAFFIC SIGNAL PLAN AND SCHEDULE.
4. SEE SHEET 13 - DETAILS 1-4 FOR TRUCK TURNING MANEUVERS.
5. SEE ROADWAY CROSS SECTIONS ON SHEET 5.
6. SEE SHEET 17 FOR FINAL BUILDING RENDERINGS.

